



User Guide

This report contains a wide range of useful information about the liver transplant program at Mayo Clinic Hospital (AZMC). The report has three main sections:

- A. Program Summary
- B. Waiting List Information
- C. Transplant Information

The Program Summary is a one-page summary highlighting characteristics of the program, including the number of candidates on the waiting list, the number of transplants performed at the program, the number of patients being cared for by the program, and patient outcomes, including outcomes while on the waiting list (the transplant rate and the death rate while on the waiting list) and outcomes after transplant (patient and graft survival probabilities). If the program performed transplants in both adults and children, survival probabilities for adults and children (pediatrics) are provided separately. For each of the outcomes measures presented, a comparison is provided showing what would be expected at this program if it were performing as similar programs around the country perform when treating similar patients. More details regarding these outcome measures are provided in Sections B and C of the report.

The Waiting List Information section contains more detailed information on how many candidates are on the waiting list at the program, the types of candidates on the waiting list, how long candidates typically have to wait for a transplant at this program, how frequently candidates successfully receive a transplant, and how often candidates on the waiting list die before receiving a transplant.

Table B1 shows the activity on this program's waiting list during two recent 1-year periods and provides comparisons to all programs within this program's OPTN region (see <http://optn.transplant.hrsa.gov/members/regions.asp> for information on OPTN regions) and the nation as a whole. Tables B2 and B3 describe the candidates on the waiting list at this program, with comparisons to candidates waiting in the same donor service area (OPO/DSA) the OPTN region, and the nation as a whole.

Table B4 shows how many candidates were removed from the waiting list because they received a transplant. The program's transplant rate is calculated as the number of candidates who received a transplant divided by the person-years observed at the program (person-years is a combination of how many candidates were on the waiting list along with how long each candidate was followed since some candidates are not on the waiting list for the entire year). The transplant rate and comparisons to what would be expected at this program are presented in Figures B1 and B2. Figure B1 shows the transplant rate compared to what was expected at this program. The expected transplant rate is an estimate of what we would expect at this program if it were performing transplants at rates similar to other programs in the US with similar candidates on their waiting lists. The expected rate is only an estimate, and is made with a certain level of uncertainty. This uncertainty is shown in Figure B2. Figure B2 displays the ratio of the observed to the expected transplant rate. A ratio of 1 indicates that the observed transplant rate was equal to the expected transplant rate, while a ratio less than 1 indicates the observed rate was lower than expected rate and a ratio greater than 1 indicates the observed rate was higher than the expected rate. However, the level of uncertainty must be considered when interpreting these numbers. The 95% interval is also shown on Figure B2. This interval provides a range within which the true ratio of observed to expected transplant rates is likely to be. If this



User Guide

confidence interval includes (crosses) 1.0, then we cannot say that this program's observed transplant rate is different from what would be expected. The observed transplant rate at this program was 140.5 per 100 person-years. Transplant rates are also provided for adult and pediatric patients separately along with comparisons to adult and pediatric rates in the DSA, the OPTN region, and the nation. Transplant rates are also presented excluding transplants from a living donor (Table B4D and Figures B1D-B3D). Please refer to the PSR Technical Methods documentation available at <http://www.srtr.org> for more detail regarding how expected rates are calculated.

The death rate (also known as the mortality rate) for candidates on the waiting list is presented in Table B5 and Figures B4-B6. These data are presented in the same way as the transplant rate data in the previous section. The intent of this table and figures is to describe risk of death once candidates are listed rather than while they are listed, but before they are transplanted. Therefore, time at risk and deaths after removal from the waiting list for reasons other than transplant, transfer to another transplant program, or recovery (no longer needing a transplant), and before any subsequent transplant, are included. As with transplant rates, mortality rates should be interpreted carefully taking into consideration the interval displayed in Figure B5. For a complete description of how observed and expected mortality rates are calculated, please refer to the technical documentation available at <http://www.srtr.org>.

Survival from listing is presented in Table B6 and Figures B7-B9. These data are presented in the same way as the waiting list mortality rate data in the previous section. The intent of this table and figures is to describe risk of death once candidates are listed rather than while they are listed, including after a transplant. As with transplant rates, mortality rates should be interpreted carefully taking into consideration the interval displayed in Figure B8. For a complete description of how observed and expected mortality rates are calculated, please refer to the technical documentation available at <http://www.srtr.org>.

Table B7 presents information on what happens to candidates on the waiting list by three different time points after listing: 6 months, 12 months, and 18 months. The table displays percentages of candidates who have died, been removed from the waiting list, been transplanted, or been transferred or lost-to-follow-up. Tables B8 and B9 provide more detail regarding how many candidates have received a deceased donor transplant by certain time points during the first 3 years after being put on the transplant waiting list. Each row of Tables B8 and B9 presents the percent of candidates who received a deceased donor transplant by each time point. Table B10 presents data on the time it took for different percentages of patients to be transplanted for candidates added to the list between 01/01/2014 and 06/30/2019. The time it took for 5% (the 5th percentile) of patients to receive a transplant at this program was 0.1 months. If "Not Observed" is displayed in the table, then too few candidates received transplants before 12/31/2019 to calculate a particular percentile of transplant times.

Table B11 contains a summary of the offer acceptance practices of the program. The offer acceptance ratio indicates whether the program is more or less likely to accept offers than the average program. If the offer acceptance ratio is greater than 1.0, then the program tends to accept more offers than average; if the offer acceptance ratio is less than 1.0, then the program tends to accept fewer offers than average. Figure B10 shows the distribution of program offer acceptance rates as well as the offer acceptance rate for this program. Figures B11 - B15 similarly show offer acceptance rates for subsets



User Guide

of offers.

The Transplant Information section begins with descriptions of transplant recipients in Tables C1 and C2. Data on recipients of deceased donor transplants are presented (Tables C1D and C2D); if applicable, data on recipients of living donor transplants are presented separately (Tables C1L and C2L). Comparisons to the region and the nation as a whole are provided. A description of the deceased donors used at this program is provided in Table C3D, along with characteristics of living donors in Table C3L, if applicable. Finally, information on the transplant procedure for deceased and living donor transplants is presented in Tables C4D and C4L, respectively.

Starting with Table C5, transplant outcomes are presented along with comparisons to what would be expected at this program and what happened in the nation as a whole. Tables C5-C10 present information on graft survival (survival of the transplanted organ), with data presented separately for adult and pediatric recipients. Patients are followed from the time of transplant until either failure of the transplanted organ or death, whichever comes first. Please refer to the technical methods for more information on these calculations (<http://www.srtr.org>).

While Tables C5-C10 present data on graft survival, Tables C11-C16 present information on patient survival. For these tables, patients are followed from the time of transplant until death, regardless of whether the transplant is functioning or the patient required another transplant to survive.

Tables C17 and C18 summarize the multiorgan transplant outcomes at this program. The summary statistics in these tables are descriptive and are not risk-adjusted for different donor and candidate characteristics.

Table D1 shows the rates of follow-up for living donors.

Additional information regarding the technical methods and the risk adjustment models used to estimate expected event rates is available on the SRTR website at <http://www.srtr.org>. We welcome and encourage feedback on these reports. Please feel free to share feedback with the SRTR at the following e-mail: srtr@srtr.org.



Table of Contents

Section	Page
User Guide	i
A. Program Summary	
Program Summary	1
B. Waiting List Information	
Waiting list activity	2
Demographic characteristics of waiting list candidates	3
Medical characteristics of waiting list candidates	4
Transplant rates	5
Deceased donor transplant rates	6
Waiting list mortality rates	7
Patient survival from listing	8
Waiting list candidate status after listing	9
Medical urgency status 1 candidate status after listing	10
Percent of candidates with deceased donor transplants: demographic characteristics	11
Percent of candidates with deceased donor transplants: medical characteristics	12
Time to transplant for waiting list candidates	13
Offer acceptance practices	14
C. Transplant Information	
Deceased donor transplant recipient demographic characteristics	16
Living donor transplant recipient demographic characteristics	17
Deceased donor transplant recipient medical characteristics	18
Living donor transplant recipient medical characteristics	19
Deceased donor characteristics	20
Living donor characteristics	21
Deceased donor transplant characteristics	22
Living donor transplant characteristics	23
Graft survival	24
Patient survival	42
Multi-organ transplant graft survival	60
Multi-organ transplant patient survival	60
D. Living Donor Information	
Living donor follow-up summary	61



A. Program Summary

Figure A1. Waiting list and transplant activity

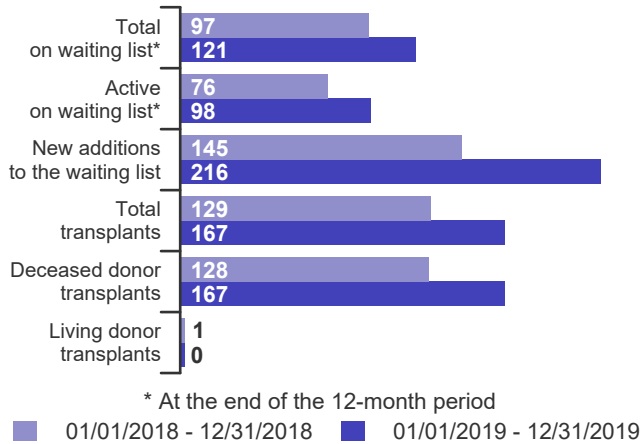


Table A1. Census of transplant recipients

Recipients	01/01/2018-12/31/2018	01/01/2019-12/31/2019
Transplanted at this center	129	167
Followed by this center*	660	675
...transplanted at this program	620	642
...transplanted elsewhere	40	33

* Recipients followed are transplant recipients for whom the center has submitted a post-transplant follow-up form for a transplant that took place before the 12-month interval for each column.

Figure A2. Transplant rates
01/01/2018 - 12/31/2019

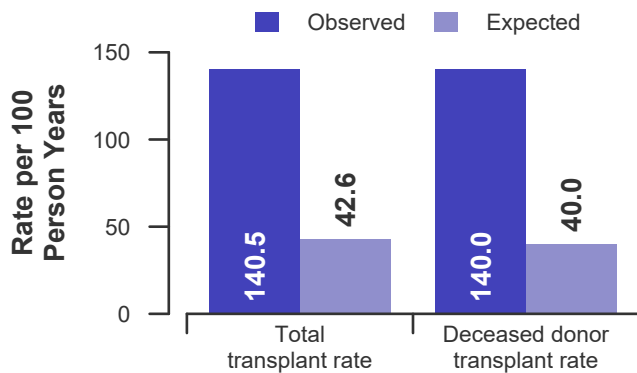


Figure A3. Waiting list mortality rates
01/01/2018 - 12/31/2019

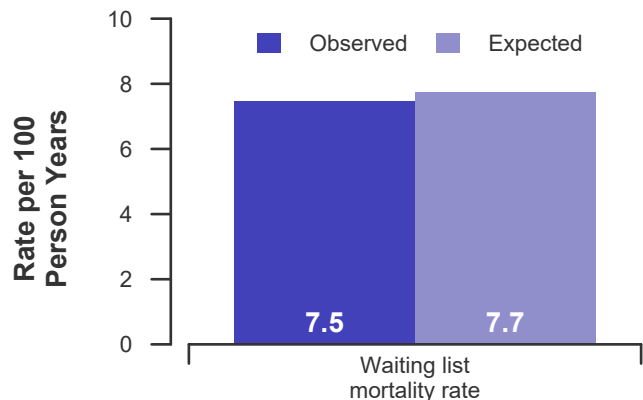


Figure A4. First-year adult graft and patient survival: 01/01/2017 - 06/30/2019

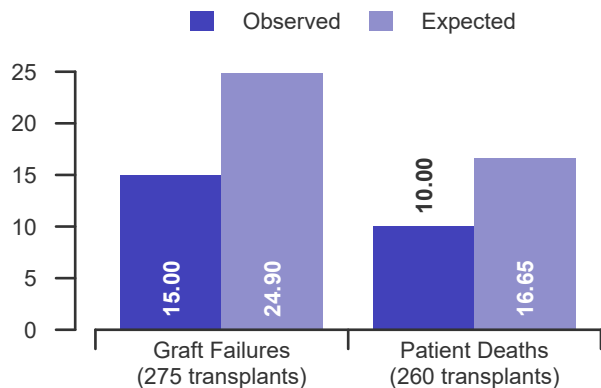


Figure A5. First-year pediatric graft and patient survival: 01/01/2017 - 06/30/2019

This center did not perform any transplants relevant to this figure during 01/01/2017-06/30/2019



B. Waiting List Information

Table B1. Waiting list activity summary: 01/01/2018 - 12/31/2019

Waiting List Registrations	Counts for this center		Activity for 01/01/2019 to 12/31/2019 as percent of registrants on waiting list on 01/01/2019		
	01/01/2018-12/31/2018	01/01/2019-12/31/2019	This Center (%)	OPTN Region (%)	U.S. (%)
On waiting list at start	112	97	100.0	100.0	100.0
Additions					
New listings at this center	145	216	222.7	77.9	98.7
Removals					
Transferred to another center	2	0	0.0	1.5	1.2
Received living donor transplant*	1	0	0.0	2.3	3.8
Received deceased donor transplant*	128	167	172.2	47.2	61.4
Died	4	6	6.2	7.2	8.9
Transplanted at another center	1	2	2.1	1.7	2.8
Deteriorated	4	2	2.1	7.5	8.8
Recovered	2	3	3.1	6.5	7.2
Other reasons	18	12	12.4	9.6	9.1
On waiting list at end of period	97	121	124.7	94.4	95.5

* These patients were removed from waiting list with removal code indicating transplant; this may not equal the number of transplants performed at this center during the specified period.



B. Waiting List Information

Table B2. Demographic characteristics of waiting list candidates
Candidates registered on the waiting list between 01/01/2019 and 12/31/2019

Demographic Characteristic	New Waiting List Registrations 01/01/2019 to 12/31/2019 (%)			All Waiting List Registrations on 12/31/2019 (%)		
	This Center (N=216)	OPTN Region (N=2,213)	U.S. (N=13,463)	This Center (N=121)	OPTN Region (N=2,682)	U.S. (N=13,036)
All (%)	100.0	100.0	100.0	100.0	100.0	100.0
Ethnicity/Race (%)*						
White	73.1	47.9	69.0	69.4	47.3	67.1
African-American	0.9	2.7	7.6	2.5	3.3	7.4
Hispanic/Latino	21.3	37.1	17.3	22.3	35.9	18.3
Asian	1.4	9.4	4.4	1.7	11.0	5.5
Other	3.2	3.0	1.7	4.1	2.5	1.6
Unknown	0.0	0.0	0.0	0.0	0.0	0.0
Age (%)						
<2 years	0.0	2.6	2.4	0.0	1.0	1.2
2-11 years	0.0	2.4	1.6	0.0	1.7	1.2
12-17 years	0.0	1.0	1.1	0.8	1.1	1.1
18-34 years	4.6	6.9	6.2	6.6	6.5	6.1
35-49 years	19.9	17.1	17.7	20.7	18.5	18.3
50-64 years	44.0	47.5	48.7	47.9	53.4	52.6
65-69 years	23.1	16.7	17.2	19.0	14.2	15.9
70+ years	8.3	5.7	5.2	5.0	3.6	3.7
Gender (%)						
Male	58.3	59.9	61.7	44.6	58.3	60.4
Female	41.7	40.1	38.3	55.4	41.7	39.6

* Race and ethnicity are reported together as a single data element, reflecting their data collection (either race or ethnicity is required, but not both). Patients formerly coded as white and Hispanic are coded as Hispanic. Race and ethnicity sum to 100%.



B. Waiting List Information

Table B3. Medical characteristics of waiting list candidates

Candidates registered on the waiting list between 01/01/2019 and 12/31/2019

Medical Characteristic	New Waiting List Registrations 01/01/2019 to 12/31/2019 (%)			All Waiting List Registrations on 12/31/2019 (%)		
	This Center	OPTN Region	U.S.	This Center	OPTN Region	U.S.
	(N=216)	(N=2,213)	(N=13,463)	(N=121)	(N=2,682)	(N=13,036)
All (%)	100.0	100.0	100.0	100.0	100.0	100.0
Blood Type (%)						
O	55.1	50.7	47.0	62.0	51.8	49.2
A	30.6	33.2	37.5	25.6	34.0	38.5
B	11.1	12.5	11.9	9.9	11.3	10.2
AB	3.2	3.7	3.7	2.5	2.8	2.0
Unknown	0.0	0.0	0.0	0.0	0.0	0.0
Previous Transplant (%)						
Yes	9.7	5.5	4.7	9.1	3.6	3.3
No	90.3	94.5	95.3	90.9	96.4	96.7
Unknown	0.0	0.0	0.0	0.0	0.0	0.0
Primary Disease (%)						
Acute Hepatic Necrosis	5.6	5.5	4.3	3.3	2.3	1.7
Non-Cholestatic Cirrhosis	64.8	66.0	66.9	62.0	71.7	71.0
Cholestatic Liver Disease/Cirrhosis	10.2	6.9	7.1	14.0	7.6	8.0
Biliary Atresia	0.0	2.5	2.1	0.8	2.2	1.6
Metabolic Diseases	0.9	1.8	2.4	0.8	1.1	1.6
Malignant Neoplasms	16.2	11.5	11.8	14.9	8.6	10.5
Other	2.3	5.6	5.3	4.1	6.5	5.4
Missing	0.0	0.2	0.1	0.0	0.0	0.0
Medical Urgency Status/MELD/PELD at Listing (%)*						
Status 1A	0.9	4.1	2.9	0.0	0.5	0.3
Status 1B	0.0	0.2	0.3	0.0	0.0	0.0
Status 2A	0.0	0.0	0.0	0.0	0.0	0.0
Status 2B	0.0	0.0	0.0	0.0	0.1	0.1
Status 3	0.0	0.0	0.0	0.0	0.9	0.5
MELD 6-10	19.4	19.4	18.1	38.0	29.3	29.4
MELD 11-14	27.3	18.8	18.7	41.3	27.5	29.0
MELD 15-20	27.3	18.3	23.1	6.6	21.4	24.5
MELD 21-30	16.2	16.5	18.3	5.8	8.6	8.8
MELD 31-40	4.6	13.5	11.3	1.7	0.8	0.9
PELD less than or equal to 10	0.0	2.0	1.6	0.0	1.8	1.7
PELD 11-14	0.0	0.2	0.3	0.0	0.1	0.1
PELD 15-20	0.0	0.7	0.5	0.0	0.2	0.2
PELD 21-30	0.0	0.4	0.4	0.0	0.1	0.1
PELD 31 or greater	0.0	0.1	0.1	0.0	0.0	0.0
Temporarily Inactive	4.2	5.7	4.3	6.6	8.7	4.4

* MELD/PELD score based on laboratory measures is shown for listings beginning 2/27/2002 unless patient is Status 1 or Temporarily Inactive. MELD/PELD scores based on exception rules are not used. Status 1 separated into 1A and 1B in August 2005.



B. Waiting List Information

Table B4. Transplant rates: 01/01/2018 - 12/31/2019

Waiting List Registrations	This Center	OPO/DSA	Region	U.S.
All Candidates				
Count on waiting list at start*	112	193	2,897	14,161
Person Years**	210.7	387.9	5,576.2	27,294.5
Removals for Transplant	296	621	2,700	17,146
Adult (18+) Candidates				
Count on waiting list at start*	111	187	2,773	13,614
Person Years**	208.7	371.4	5,342.0	26,280.5
Removals for transplant	296	607	2,491	16,003
Pediatric (<18) Candidates				
Count on waiting list at start*	1	6	124	547
Person Years**	2.0	16.5	234.2	1,014.0
Removals for transplant	0	14	209	1,143

* Counts in this table may be lower than similar counts in other waiting list tables, such as Table B1. A small percentage (~1%) of patients are found to have died or been transplanted before being removed from the waiting list, so these patients are excluded if the event occurs prior to the start of the study period. Inactive time on the waiting list is included in the calculations for this table.

** Person years are calculated as days (converted to fractional years). The number of days from January 1 or from the date of first wait listing until death, transplant, removal from the waiting list or December 31.

Figure B1. Observed and expected transplant rates: 01/01/2018 - 12/31/2019

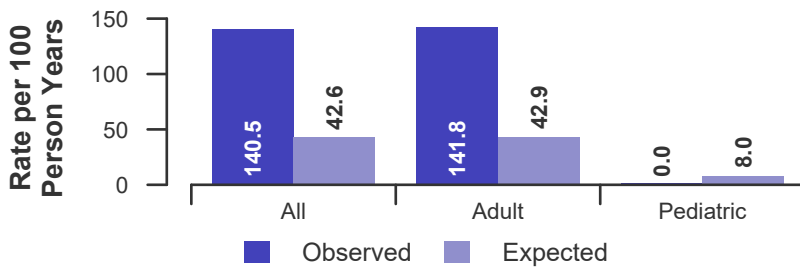


Figure B2. Transplant rate ratio estimate

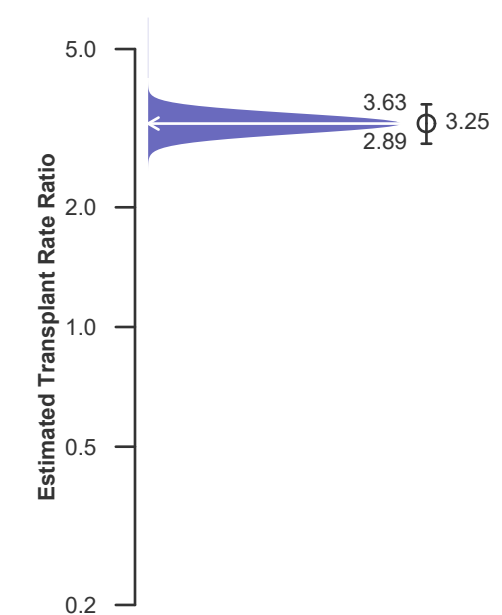
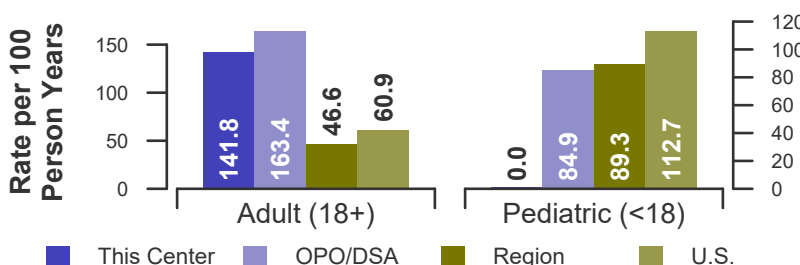


Figure B3. Observed adult (18+) and pediatric (<18) transplant rates: 01/01/2018 - 12/31/2019





B. Waiting List Information

Table B4D. Deceased donor transplant rates: 01/01/2018 - 12/31/2019

Waiting List Registrations	This Center	OPO/DSA	Region	U.S.
All Candidates				
Count on waiting list at start*	112	193	2,897	14,161
Person Years**	210.7	387.9	5,576.2	27,294.5
Removals for Transplant	295	620	2,588	16,222
Adult (18+) Candidates				
Count on waiting list at start*	111	187	2,773	13,614
Person Years**	208.7	371.4	5,342.0	26,280.5
Removals for transplant	295	606	2,397	15,223
Pediatric (<18) Candidates				
Count on waiting list at start*	1	6	124	547
Person Years**	2.0	16.5	234.2	1,014.0
Removals for transplant	0	14	191	999

* Counts in this table may be lower than similar counts in other waiting list tables, such as Table B1. A small percentage (~1%) of patients are found to have died or been transplanted before being removed from the waiting list, so these patients are excluded if the event occurs prior to the start of the study period. Inactive time on the waiting list is included in the calculations for this table.

** Person years are calculated as days (converted to fractional years). The number of days from January 1 or from the date of first wait listing until death, transplant, removal from the waiting list or December 31.

Figure B1D. Observed and expected deceased donor transplant rates: 01/01/2018 - 12/31/2019

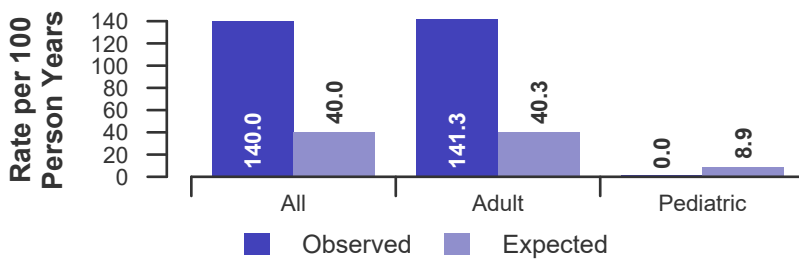


Figure B2D. Deceased donor transplant rate ratio estimate

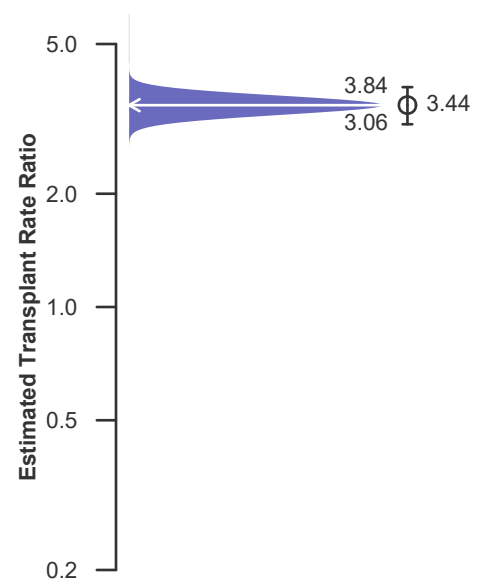
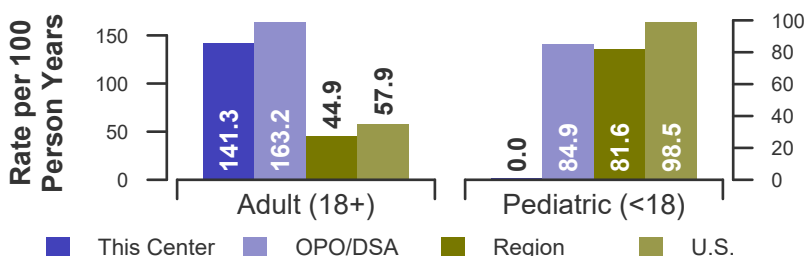


Figure B3D. Observed adult (18+) and pediatric (<18) deceased donor transplant rates: 01/01/2018 - 12/31/2019





B. Waiting List Information

Table B5. Waiting list mortality rates: 01/01/2018 - 12/31/2019

Waiting List Registrations	This Center	OPO/DSA	Region	U.S.
All Candidates				
Count on waiting list at start*	112	193	2,897	14,161
Person Years**	241.0	462.4	6,354.1	31,578.0
Number of deaths	18	43	587	3,724
Adult (18+) Candidates				
Count on waiting list at start*	111	187	2,773	13,614
Person Years**	239.0	439.1	6,100.5	30,466.5
Number of deaths	18	41	568	3,661
Pediatric (<18) Candidates				
Count on waiting list at start*	1	6	124	547
Person Years**	2.0	23.3	253.5	1,111.6
Number of deaths	0	2	19	63

* Counts in this table may be lower than similar counts in other waiting list tables, such as Table B1. A small percentage (~1%) of patients are found to have died or been transplanted before being removed from the waiting list, so these patients are excluded if the event occurs prior to the start of the study period. Inactive time on the waiting list is included in the calculations for this table.

** Person years are calculated as days (converted to fractional years). The number of days from January 1 or from the date of first wait listing until death, transplant, 60 days after recovery, transfer or December 31.

Figure B4. Observed and expected waiting list mortality rates: 01/01/2018 - 12/31/2019

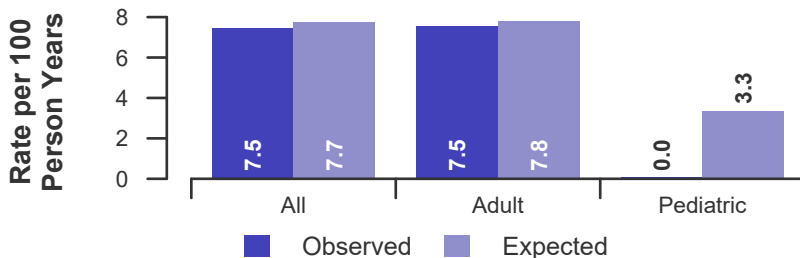


Figure B5. Waiting list mortality rate ratio estimate

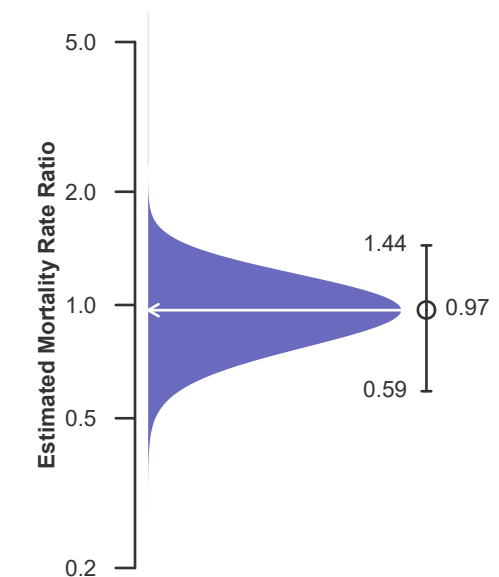
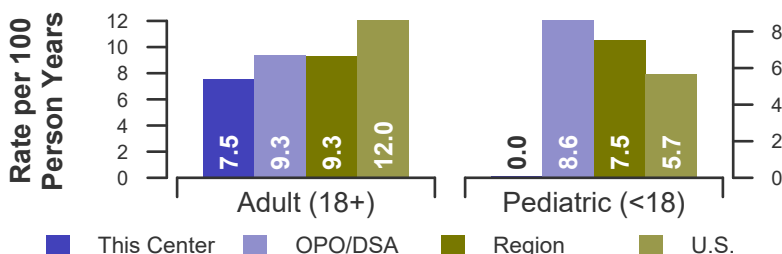


Figure B6. Observed adult (18+) and pediatric (<18) waiting list mortality rates: 01/01/2018 - 12/31/2019





B. Waiting List Information

Table B6. Rates of patient mortality after listing: 01/01/2018 - 12/31/2019

Waiting List Registrations	This Center	OPO/DSA	Region	U.S.
All Patients				
Count at risk during the evaluation period	846	1,734	11,553	72,006
Person-years*	1,072.3	2,224.8	15,361.0	96,169.6
Number of Deaths	47	124	1,016	6,708
Adult (18+) Patients				
Count at risk during the evaluation period	846	1,650	10,664	67,563
Person-years*	1,072.3	2,124.6	14,119.6	89,913.6
Number of Deaths	47	120	986	6,568
Pediatric (<18) Patients				
Count at risk during the evaluation period	0	84	889	4,443
Person-years*	0.0	100.2	1,241.4	6,256.0
Number of Deaths	0	4	30	140

* Person-years are calculated as days (converted to fractional years). The number of days from 01/01/2018, or from the date of first wait listing until death, reaching 5 years after listing or December 31, 2019.

** Patient mortality after listing describes the relative survival experience of patients after listing. It depends on many factors, some of which are outside of the control of the transplant program. For example, availability of organs may not be the same in every part of the country.

Figure B7. Observed and expected rates of patient mortality after listing: 01/01/2018 - 12/31/2019

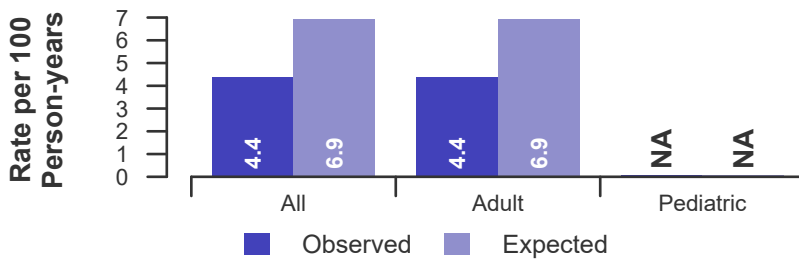


Figure B8. HR estimate of patient mortality after listing

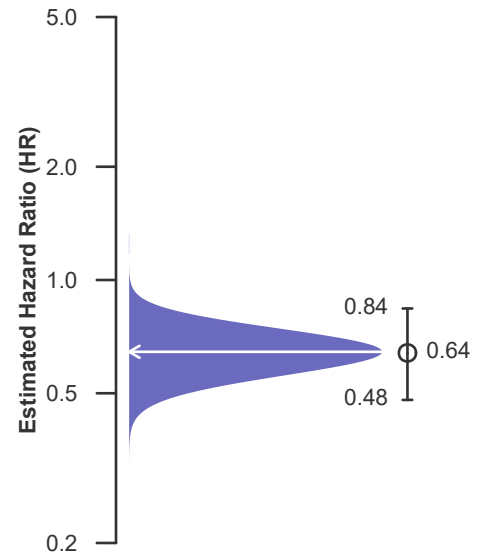
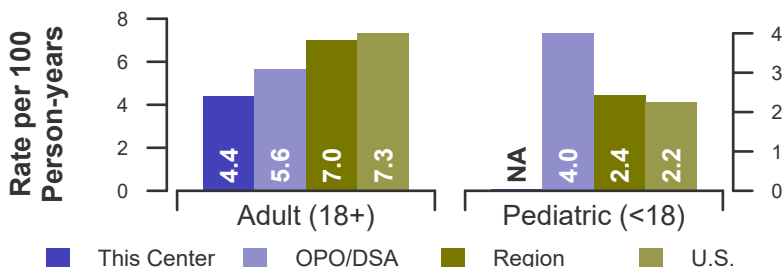


Figure B9. Observed adult (18+) and pediatric (<18) rates of patient mortality after listing: 01/01/2018 - 12/31/2019





B. Waiting List Information

Table B7. Waiting list candidate status after listing
Candidates registered on waiting list between 07/01/2017 and 06/30/2018

Waiting list status (survival status)	This Center (N=132)			U.S. (N=13,030)		
	Months Since Listing			Months Since Listing		
	6	12	18	6	12	18
Alive on waiting list (%)	23.5	11.4	5.3	48.0	27.5	18.1
Died on the waiting list without transplant (%)	2.3	2.3	2.3	4.6	5.9	6.8
Removed without transplant (%):						
Condition worsened (status unknown)	2.3	3.0	3.0	4.5	6.6	7.6
Condition improved (status unknown)	0.0	0.0	0.0	1.2	2.1	2.9
Refused transplant (status unknown)	0.0	0.0	0.0	0.3	0.5	0.6
Other	3.0	4.5	5.3	1.8	3.3	4.4
Transplant (living donor from waiting list only) (%):						
Functioning (alive)	0.8	0.8	0.0	1.8	2.5	1.8
Failed-Retransplanted (alive)	0.0	0.0	0.0	0.0	0.0	0.0
Failed-alive not retransplanted	0.0	0.0	0.0	0.0	0.0	0.0
Died	0.0	0.0	0.0	0.0	0.0	0.1
Status Yet Unknown**	0.0	0.0	0.8	0.0	0.1	0.9
Transplant (deceased donor) (%):						
Functioning (alive)	62.1	68.2	50.8	33.9	43.7	36.6
Failed-Retransplanted (alive)	3.0	3.8	3.8	0.3	0.4	0.6
Failed-alive not retransplanted	0.0	0.0	0.0	0.0	0.0	0.0
Died	1.5	1.5	2.3	1.7	2.7	3.6
Status Yet Unknown*	1.5	4.5	25.8	1.7	4.2	15.3
Lost or Transferred (status unknown) (%)	0.0	0.0	0.8	0.2	0.5	0.6
TOTAL (%)	100.0	100.0	100.0	100.0	100.0	100.0
Total % known died on waiting list or after transplant	3.8	3.8	4.5	6.3	8.7	10.5
Total % known died or removed as unstable	6.1	6.8	7.6	10.8	15.2	18.1
Total % removed for transplant	68.9	78.8	83.3	39.4	53.7	59.0
Total % with known functioning transplant (alive)	62.9	68.9	50.8	35.7	46.2	38.5

* Follow-up form covering specified time period not yet completed, and possibly has not become due.



B. Waiting List Information

Table B7S1. Medical urgency status 1 candidate status after listing
Candidates registered on the waiting list between 07/01/2017 and 06/30/2018

Waiting list status (survival status)	This Center (N=2)			U.S. (N=432)		
	Months Since listing			Months Since listing		
	6	12	18	6	12	18
Alive on waiting list (%)	0.0	0.0	0.0	4.6	2.1	1.4
Died on the waiting list without transplant (%)	0.0	0.0	0.0	7.2	7.2	7.2
Removed without transplant (%):						
Condition worsened (status unknown)	0.0	0.0	0.0	6.0	6.0	6.0
Condition improved (status unknown)	0.0	0.0	0.0	18.5	20.6	21.3
Refused transplant (status unknown)	0.0	0.0	0.0	0.2	0.2	0.2
Other	0.0	0.0	0.0	0.9	0.9	0.9
Transplant (living donor from waiting list only) (%):						
Functioning (alive)	0.0	0.0	0.0	0.7	0.5	0.5
Failed-Retransplanted (alive)	0.0	0.0	0.0	0.0	0.0	0.0
Failed-alive not retransplanted	0.0	0.0	0.0	0.0	0.0	0.0
Died	0.0	0.0	0.0	0.0	0.0	0.0
Status Yet Unknown**	0.0	0.0	0.0	0.0	0.2	0.2
Transplant (deceased donor) (%):						
Functioning (alive)	100.0	100.0	100.0	55.3	51.4	42.8
Failed-Retransplanted (alive)	0.0	0.0	0.0	0.7	0.7	0.9
Failed-alive not retransplanted	0.0	0.0	0.0	0.0	0.0	0.0
Died	0.0	0.0	0.0	4.6	5.6	6.2
Status Yet Unknown*	0.0	0.0	0.0	0.9	4.4	12.0
Lost or Transferred (status unknown) (%)	0.0	0.0	0.0	0.2	0.2	0.2
TOTAL (%)	100.0	100.0	100.0	100.0	100.0	100.0
Total % known died on waiting list or after transplant	0.0	0.0	0.0	11.8	12.7	13.4
Total % known died or removed as unstable	0.0	0.0	0.0	17.8	18.8	19.4
Total % removed for transplant	100.0	100.0	100.0	62.3	62.7	62.7
Total % with known functioning transplant (alive)	100.0	100.0	100.0	56.0	51.9	43.3

* Follow-up form covering specified time period not yet completed, and possibly has not become due.



B. Waiting List Information

Table B8. Percent of candidates with deceased donor transplants: demographic characteristics
Candidates registered on the waiting list between 01/01/2014 and 12/31/2016

Characteristic	N	Percent transplanted at time periods since listing								
		This Center				United States				
		30 day	1 year	2 years	3 years	N	30 day	1 year	2 years	3 years
All	348	22.1	68.4	74.7	75.6	36,338	18.2	46.3	54.2	56.0
Ethnicity/Race*										
White	279	21.9	68.8	75.6	76.7	24,918	18.1	47.3	54.7	56.4
African-American	4	0.0	75.0	75.0	75.0	3,461	21.5	50.7	58.5	60.3
Hispanic/Latino	45	28.9	66.7	73.3	73.3	5,678	17.2	41.4	49.8	51.9
Asian	8	0.0	62.5	62.5	62.5	1,738	16.5	40.7	52.6	54.9
Other	12	25.0	66.7	66.7	66.7	543	17.7	45.3	53.6	55.1
Unknown	0	--	--	--	--	0	--	--	--	--
Age										
<2 years	0	--	--	--	--	882	24.0	68.8	73.9	75.2
2-11 years	0	--	--	--	--	724	24.2	67.8	73.9	75.3
12-17 years	0	--	--	--	--	450	21.3	53.8	64.2	65.8
18-34 years	13	23.1	61.5	76.9	76.9	2,023	26.7	48.4	54.3	56.7
35-49 years	45	20.0	68.9	77.8	77.8	5,644	24.7	48.2	54.0	55.8
50-64 years	213	25.4	70.0	76.1	77.0	20,312	16.4	44.7	53.2	55.2
65-69 years	66	16.7	65.2	69.7	71.2	5,176	14.1	43.1	52.1	53.6
70+ years	11	0.0	63.6	63.6	63.6	1,127	12.8	42.2	49.0	49.2
Gender										
Male	217	25.8	72.8	78.3	79.7	23,058	17.9	47.5	55.8	57.6
Female	131	16.0	61.1	68.7	68.7	13,280	18.8	44.3	51.3	53.2

* Race and ethnicity are reported together as a single data element, reflecting their data collection (either race or ethnicity is required, but not both). Patients formerly coded as white and Hispanic are coded as Hispanic. Race and ethnicity sum to 100%.



B. Waiting List Information

Table B9. Percent of candidates with deceased donor transplants: medical characteristics
Candidates registered on the waiting list between 01/01/2014 and 12/31/2016

Characteristic	N	Percent transplanted at time periods since listing								
		This Center				United States				
		30 day	1 year	2 years	3 years	N	30 day	1 year	2 years	3 years
All	348	22.1	68.4	74.7	75.6	36,338	18.2	46.3	54.2	56.0
Blood Type										
O	167	22.8	68.3	73.7	74.9	16,983	17.9	44.5	52.4	54.3
A	140	21.4	67.1	75.7	76.4	13,256	16.8	44.6	53.0	54.6
B	30	20.0	66.7	70.0	70.0	4,713	19.9	52.2	59.3	61.2
AB	11	27.3	90.9	90.9	90.9	1,386	29.4	66.2	70.4	72.1
Previous Transplant										
Yes	22	40.9	81.8	86.4	86.4	2,014	28.2	50.3	55.4	56.8
No	326	20.9	67.5	73.9	74.8	34,324	17.6	46.1	54.1	55.9
Primary Disease										
Acute Hepatic Necrosis	4	75.0	75.0	75.0	75.0	1,437	47.2	55.0	57.8	58.7
Non-Cholestatic Cirrhosis	203	23.6	64.5	71.4	72.4	24,395	18.4	44.3	51.2	52.9
Cholestatic Liver Disease/Cirrhosis	29	10.3	44.8	65.5	65.5	2,563	15.6	46.8	55.1	58.3
Biliary Atresia	1	100.0	100.0	100.0	100.0	736	16.4	63.6	72.3	73.8
Metabolic Diseases	4	25.0	75.0	75.0	75.0	905	20.6	60.8	67.7	69.3
Malignant Neoplasms	86	14.0	80.2	82.6	83.7	4,406	8.3	47.6	62.2	64.1
Other	21	42.9	85.7	85.7	85.7	1,881	20.4	48.4	56.8	59.0
Missing	0	--	--	--	--	15	13.3	13.3	13.3	13.3
Medical Urgency Status/MELD/PELD at Listing*										
Status 1	0	--	--	--	--	0	--	--	--	--
Status 1A	0	--	--	--	--	1,171	60.3	61.2	61.2	61.2
Status 1B	0	--	--	--	--	146	42.5	82.9	82.9	82.9
Status 2A	0	--	--	--	--	0	--	--	--	--
Status 2B	0	--	--	--	--	0	--	--	--	--
Status 3	0	--	--	--	--	0	--	--	--	--
MELD 6-10	52	9.6	51.9	61.5	63.5	7,193	2.9	35.8	50.1	52.6
MELD 11-14	73	11.0	60.3	68.5	71.2	6,776	3.3	31.0	41.8	44.6
MELD 15-20	76	19.7	61.8	71.1	71.1	8,297	8.4	41.5	49.8	52.4
MELD 21-30	59	45.8	81.4	83.1	83.1	6,204	27.3	58.3	61.2	61.9
MELD 31-40	19	94.7	100.0	100.0	100.0	4,062	67.3	73.7	73.8	73.8
PELD less than or equal to 10	0	--	--	--	--	691	10.4	64.8	73.4	75.4
PELD 11-14	0	--	--	--	--	104	19.2	74.0	81.7	82.7
PELD 15-20	0	--	--	--	--	178	13.5	72.5	78.1	79.8
PELD 21-30	0	--	--	--	--	158	21.5	72.2	77.2	77.2
PELD 31 or greater	0	--	--	--	--	72	59.7	80.6	80.6	81.9
Temporarily Inactive	69	5.8	76.8	81.2	81.2	1,286	7.7	34.7	44.4	45.4

* MELD/PELD score based on laboratory measures is shown for listings beginning 2/27/2002 unless patient is Status 1 or Temporarily Inactive. MELD/PELD scores based on exception rules are not used. Status 1 separated into 1A and 1B in August 2005.



B. Waiting List Information

Table B10. Time to transplant for waiting list candidates*

Candidates registered on the waiting list between 01/01/2014 and 06/30/2019

Percentile	Center	Months to Transplant**		U.S.
		OPO/DSA	Region	
5th	0.1	0.1	0.1	0.1
10th	0.3	0.2	0.3	0.3
25th	0.8	0.8	2.2	1.8
50th (median time to transplant)	3.1	4.4	17.0	10.1
75th	12.5	38.8	Not Observed	Not Observed

* If cells contain "Not Observed" fewer than that percentile of patients had received a transplant. For example, the 50th percentile of time to transplant is the time when 50% of candidates have received transplants. If waiting times are long, then the 50th percentile may not be observed during the follow-up period for this table. Also, if more than 50% of candidates are removed from the list due to death or other reasons before receiving transplants, then the 50th percentile of time to transplant will not be observed.

** Censored on 12/31/2019. Calculated as the months after listing, during which the corresponding percent of all patients initially listed had received a transplant.



B. Waiting List Information

Table B11. Offer Acceptance Practices: 01/01/2019 - 12/31/2019

Offers Acceptance Characteristics	This Center	OPO/DSA	Region	U.S.
Overall				
Number of Offers	1,378	2,852	48,954	174,762
Number of Acceptances	148	305	1,173	7,490
Expected Acceptances	35.3	138.1	1,234.2	7,484.4
Offer Acceptance Ratio*	4.02	2.19	0.95	1.00
95% Credible Interval**	[3.40, 4.69]	--	--	--
PHS increased infectious risk				
Number of Offers	201	539	8,506	34,414
Number of Acceptances	32	71	279	2,100
Expected Acceptances	8.2	37.8	294.6	2,098.7
Offer Acceptance Ratio*	3.32	1.83	0.95	1.00
95% Credible Interval**	[2.30, 4.53]	--	--	--
DCD donor				
Number of Offers	611	903	15,148	52,630
Number of Acceptances	56	100	142	663
Expected Acceptances	3.4	10.8	121.2	674.7
Offer Acceptance Ratio*	10.72	7.96	1.17	0.98
95% Credible Interval**	[8.14, 13.64]	--	--	--
HCV+ donor				
Number of Offers	47	103	1,348	7,371
Number of Acceptances	4	12	43	457
Expected Acceptances	0.5	5.5	35.4	457.8
Offer Acceptance Ratio*	2.37	1.86	1.20	1.00
95% Credible Interval**	[0.87, 4.61]	--	--	--
Hard-to-Place Livers (Over 50 Offers)				
Number of Offers	1,075	1,844	32,204	97,638
Number of Acceptances	86	156	231	633
Expected Acceptances	4.9	11.2	226.7	641.9
Offer Acceptance Ratio*	12.75	11.95	1.02	0.99
95% Credible Interval**	[10.23, 15.55]	--	--	--
Donor more than 500 miles away				
Number of Offers	647	1,128	11,851	54,690
Number of Acceptances	50	90	198	746
Expected Acceptances	5.5	19.8	153.8	685.4
Offer Acceptance Ratio*	6.89	4.22	1.28	1.09
95% Credible Interval**	[5.14, 8.88]	--	--	--

* The offer acceptance ratio estimates the relative offer acceptance practice of Mayo Clinic Hospital (AZMC) compared to the national offer acceptance practice. A ratio above one indicates the program is more likely to accept an offer compared to national offer acceptance practices (e.g., an offer acceptance ratio of 1.25 indicates a 25% more likely to accept an offer), while a ratio below one indicates the program is less likely to accept an offer compared to national offer acceptance practices (e.g., an offer acceptance ratio of 0.75 indicates a 25% less likely to accept an offer).

** As an example, the 95% Credible Interval for the overall offer acceptance ratio, [3.40, 4.69], indicates the location of AZMC's true offer acceptance ratio with 95% probability. The best estimate is 302% more likely to accept an offer compared to national acceptance behavior, but AZMC's performance could plausibly range from 240% higher acceptance up to 369% higher acceptance.



B. Waiting List Information

Figure B10. Offer acceptance: Overall

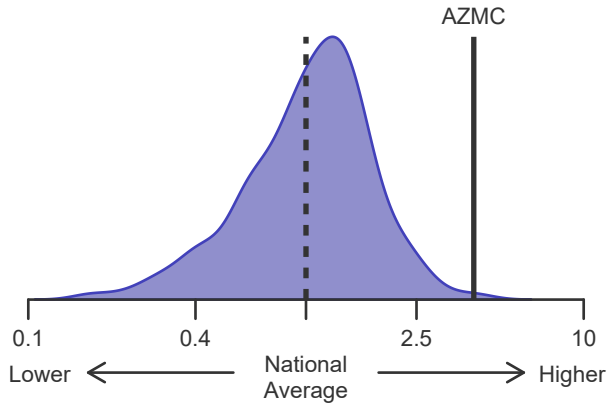


Figure B11. Offer acceptance: PHS increased infectious risk

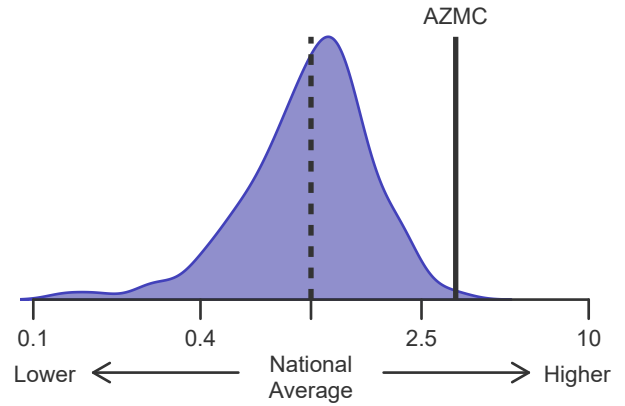


Figure B12. Offer acceptance: DCD Donor

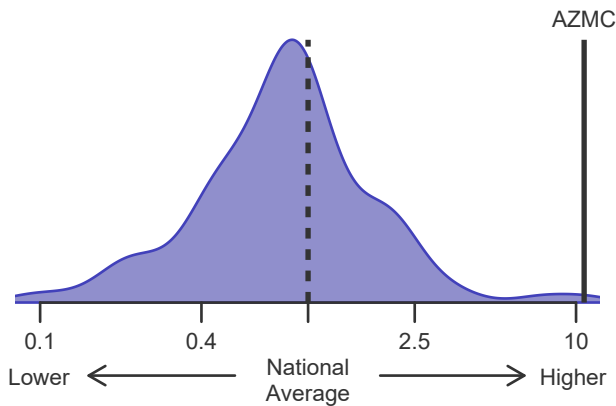


Figure B13. Offer acceptance: HCV+ Donor

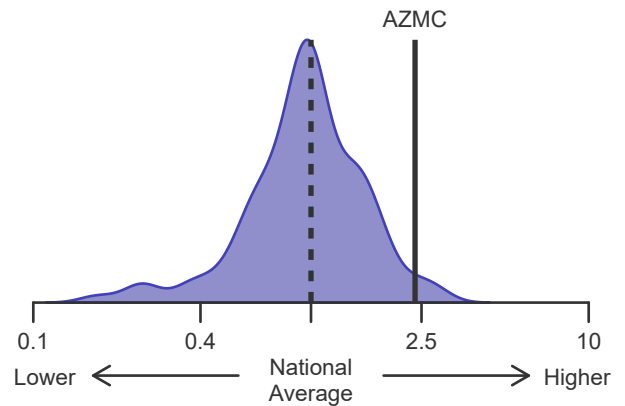


Figure B14. Offer acceptance: Offer number > 50

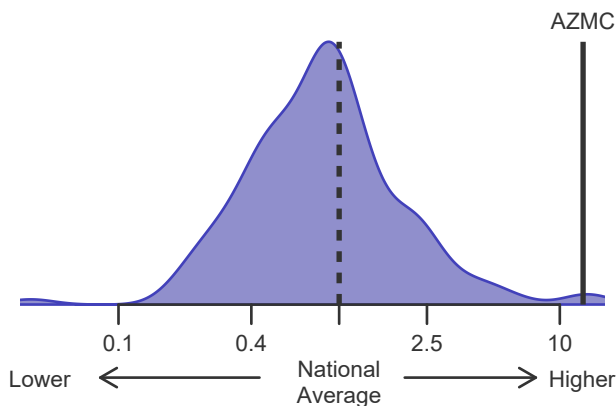
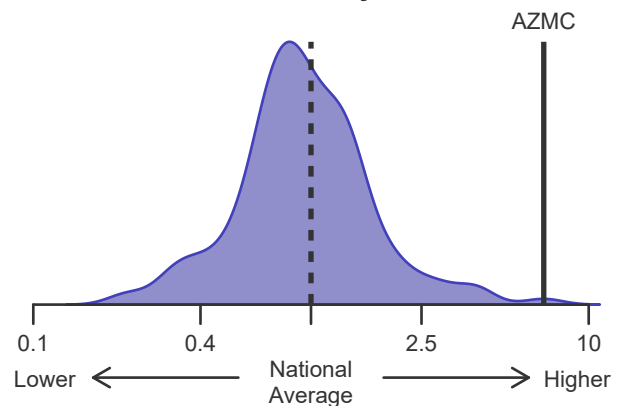


Figure B15. Offer acceptance: Donor more than 500 miles away





C. Transplant Information

Table C1D. Deceased donor transplant recipient demographic characteristics
Patients transplanted between 01/01/2019 and 12/31/2019

Characteristic	Percentage in each category		
	Center (N=167)	Region (N=1,341)	U.S. (N=8,372)
Ethnicity/Race (%)*			
White	73.7	48.5	69.0
African-American	0.6	3.1	8.1
Hispanic/Latino	21.0	35.8	16.7
Asian	1.8	9.5	4.4
Other	3.0	3.1	1.7
Unknown	0.0	0.0	0.0
Age (%)			
<2 years	0.0	2.5	2.4
2-11 years	0.0	2.4	2.3
12-17	0.0	1.0	1.0
18-34	4.2	5.9	6.1
35-49 years	16.8	16.5	18.0
50-64 years	43.7	47.9	48.5
65-69 years	25.1	17.7	16.1
70+ years	10.2	6.1	5.6
Gender (%)			
Male	64.7	61.6	63.6
Female	35.3	38.4	36.4

* Race and ethnicity are reported together as a single data element, reflecting their data collection (either race or ethnicity is required, but not both). Patients formerly coded as white and Hispanic are coded as Hispanic. Race and ethnicity sum to 100%.



C. Transplant Information

**Table C1L. Living donor transplant recipient demographic characteristics
Patients transplanted between 01/01/2019 and 12/31/2019**

**This center did not perform any
transplants relevant to
this table during
01/01/2019-12/31/2019**



C. Transplant Information

Table C2D. Deceased donor transplant recipient medical characteristics
Patients transplanted between 01/01/2019 and 12/31/2019

Characteristic	Percentage in each category		
	Center (N=167)	Region (N=1,341)	U.S. (N=8,372)
Blood Type (%)			
O	47.9	46.5	45.4
A	39.5	34.4	36.2
B	10.2	14.1	13.6
AB	2.4	5.1	4.8
Previous Transplant (%)			
Yes	7.2	5.2	4.6
No	92.8	94.8	95.4
Body Mass Index (%)			
0-20	10.8	14.5	11.2
21-25	25.1	29.6	26.4
26-30	29.9	30.9	31.0
31-35	22.2	15.5	18.8
36-40	7.8	6.8	8.4
41+	4.2	2.0	3.5
Unknown	0.0	0.7	0.7
Primary Disease (%)			
Acute Hepatic Necrosis	6.6	4.9	4.6
Non-Cholestatic Cirrhosis	69.5	62.3	63.5
Cholestatic Liver Disease/Cirrhosis	7.8	5.7	6.8
Biliary Atresia	0.0	2.0	2.2
Metabolic Diseases	1.2	3.1	3.3
Malignant Neoplasms	12.6	18.2	15.8
Other	2.4	3.6	3.7
Missing	0.0	0.1	0.1
Medical Urgency Statust/MELD/PELD at Transplant (%)*			
Status 1A	1.2	4.3	3.1
Status 1B	0.0	2.4	1.6
MELD 6-10	13.2	13.6	12.6
MELD 11-14	24.0	13.2	13.0
MELD 15-20	29.9	16.3	20.8
MELD 21-30	26.3	20.5	24.7
MELD 31-40	5.4	27.7	21.4
PELD less than or equal to 10	0.0	1.0	1.3
PELD 11-14	0.0	0.4	0.4
PELD 15-20	0.0	0.4	0.4
PELD 21-30	0.0	0.2	0.4
PELD 31 or greater	0.0	0.1	0.2
Temporarily Inactive	0.0	0.0	0.0
Recipient Medical Condition at Transplant (%)			
Not Hospitalized	88.6	59.7	65.8
Hospitalized	8.4	19.5	19.6
ICU	3.0	20.7	14.5
Unknown	0.0	0.1	0.0

* MELD/PELD score based on laboratory measures at the time of transplant is shown unless recipient is Status 1 or Temporarily Inactive. MELD/PELD scores based on exception rules are not used. Status 1 separated into 1A and 1B in August 2005



C. Transplant Information

**Table C2L. Living donor transplant recipient medical characteristics
Patients transplanted between 01/01/2019 and 12/31/2019**

**This center did not perform any
transplants relevant to
this table during
01/01/2019-12/31/2019**



C. Transplant Information

Table C3D. Deceased donor characteristics
Transplants performed between 01/01/2019 and 12/31/2019

Donor Characteristic	Percentage in each category		
	Center (N=167)	Region (N=1,341)	U.S. (N=8,372)
Cause of Death (%)			
Deceased: Stroke	29.3	30.9	27.4
Deceased: MVA	11.4	12.9	12.7
Deceased: Other	59.3	56.2	59.9
Ethnicity/Race (%)*			
White	59.3	50.8	62.8
African-American	4.8	8.9	17.9
Hispanic/Latino	25.7	30.4	15.2
Asian	6.0	7.3	2.9
Other	4.2	2.5	1.1
Not Reported	0.0	0.0	0.0
Age (%)			
<2 years	0.0	1.4	1.2
2-11 years	1.2	2.9	2.6
12-17	1.8	3.4	4.5
18-34	19.2	31.8	32.3
35-49 years	23.4	26.4	27.4
50-64 years	43.7	26.3	24.5
65-69 years	7.2	4.3	3.8
70+ years	3.6	3.4	3.6
Gender (%)			
Male	62.9	62.0	60.3
Female	37.1	38.0	39.7
Blood Type (%)			
O	50.3	50.3	48.3
A	39.5	34.8	37.0
B	9.6	12.1	11.9
AB	0.6	2.8	2.8
Unknown	0.0	0.0	0.0

* Race and ethnicity are reported together as a single data element, reflecting their data collection (either race or ethnicity is required, but not both). Patients formerly coded as white and Hispanic are coded as Hispanic. Race and ethnicity sum to 100%.



C. Transplant Information

Table C3L. Living donor characteristics

Transplants performed between 01/01/2019 and 12/31/2019

This center did not perform any
transplants relevant to
this table during
01/01/2019-12/31/2019



C. Transplant Information

Table C4D. Deceased donor transplant characteristics
Transplants performed between 01/01/2019 and 12/31/2019

Transplant Characteristic	Percentage in each category		
	Center (N=167)	Region (N=1,341)	U.S. (N=8,372)
Cold Ischemic Time (Hours): Local (%)			
Deceased: 0-5 hr	82.5	41.8	65.5
Deceased: 6-10 hr	17.5	54.5	32.2
Deceased: 11-15 hr	0.0	3.1	1.4
Deceased: 16-20 hr	0.0	0.2	0.1
Deceased: 21+ hr	0.0	0.0	0.1
Not Reported	0.0	0.5	0.8
Cold Ischemic Time (Hours): Shared (%)			
Deceased: 0-5 hr	47.3	24.9	40.7
Deceased: 6-10 hr	50.0	69.2	55.3
Deceased: 11-15 hr	2.7	5.9	3.0
Deceased: 16-20 hr	0.0	0.0	0.2
Deceased: 21+ hr	0.0	0.0	0.1
Not Reported	0.0	0.0	0.6
Procedure Type (%)			
Liver alone	88.6	89.0	90.1
Liver and another organ	11.4	11.0	9.9
Sharing (%)			
Local	34.1	48.4	63.3
Shared	65.9	51.6	36.7
Median Time in Hospital After Transplant*	5.5 Days	10.0 Days	10.0 Days

* Multiple organ transplants are excluded from this statistic.



C. Transplant Information

Table C4L. Living donor transplant characteristics

Transplants performed between 01/01/2019 and 12/31/2019

This center did not perform any
transplants relevant to
this table during
01/01/2019-12/31/2019



C. Transplant Information

Table C5. Adult (18+) 1-month survival with a functioning graft
Single organ transplants performed between 01/01/2017 and 06/30/2019
Deaths and retransplants are considered graft failures

	AZMC	U.S.
Number of transplants evaluated	275	17,388
Estimated probability of surviving with a functioning graft at 1 month (unadjusted for patient and donor characteristics)	96.73%	96.64%
Expected probability of surviving with a functioning graft at 1 month (adjusted for patient and donor characteristics)	96.30%	--
Number of observed graft failures (including deaths) during the first month after transplant	9	585
Number of expected graft failures (including deaths) during the first month after transplant	10.18	--
Estimated hazard ratio*	0.90	--
95% credible interval for the hazard ratio**	[0.45, 1.51]	--

* The hazard ratio provides an estimate of how Mayo Clinic Hospital (AZMC)'s results compare with what was expected based on modeling the transplant outcomes from all U.S. programs. A ratio above 1 indicates higher than expected graft failure rates (e.g., a hazard ratio of 1.5 would indicate 50% higher risk), and a ratio below 1 indicates lower than expected graft failure rates (e.g., a hazard ratio of 0.75 would indicate 25% lower risk). If AZMC's graft failure rate were precisely the expected rate, the estimated hazard ratio would be 1.0.

** The 95% credible interval, [0.45, 1.51], indicates the location of AZMC's true hazard ratio with 95% probability. The best estimate is 10% lower risk of graft failure compared to an average program, but AZMC's performance could plausibly range from 55% reduced risk up to 51% increased risk.

Figure C1. Adult (18+) 1-month graft failure HR estimate

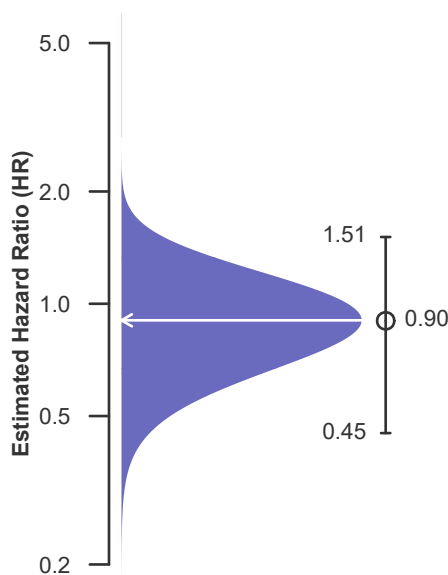
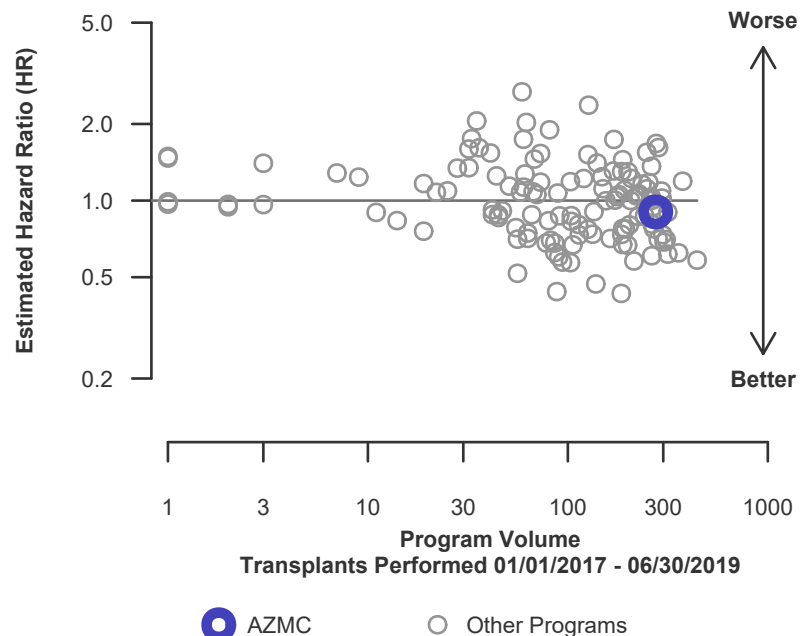


Figure C2. Adult (18+) 1-month graft failure HR program comparison





C. Transplant Information

Table C5D. Adult (18+) 1-month survival with a functioning deceased donor graft
Single organ transplants performed between 01/01/2017 and 06/30/2019
Deaths and retransplants are considered graft failures

	AZMC	U.S.
Number of transplants evaluated	274	16,543
Estimated probability of surviving with a functioning graft at 1 month (unadjusted for patient and donor characteristics)	96.72%	96.61%
Expected probability of surviving with a functioning graft at 1 month (adjusted for patient and donor characteristics)	96.30%	--
Number of observed graft failures (including deaths) during the first month after transplant	9	560
Number of expected graft failures (including deaths) during the first month after transplant	10.15	--
Estimated hazard ratio*	0.91	--
95% credible interval for the hazard ratio**	[0.45, 1.51]	--

* The hazard ratio provides an estimate of how Mayo Clinic Hospital (AZMC)'s results compare with what was expected based on modeling the transplant outcomes from all U.S. programs. A ratio above 1 indicates higher than expected graft failure rates (e.g., a hazard ratio of 1.5 would indicate 50% higher risk), and a ratio below 1 indicates lower than expected graft failure rates (e.g., a hazard ratio of 0.75 would indicate 25% lower risk). If AZMC's graft failure rate were precisely the expected rate, the estimated hazard ratio would be 1.0.

** The 95% credible interval, [0.45, 1.51], indicates the location of AZMC's true hazard ratio with 95% probability. The best estimate is 9% lower risk of graft failure compared to an average program, but AZMC's performance could plausibly range from 55% reduced risk up to 51% increased risk.

Figure C1D. Adult (18+) 1-month deceased donor graft failure HR estimate

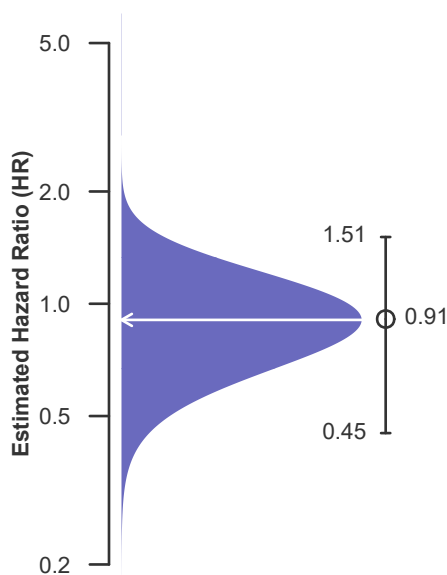
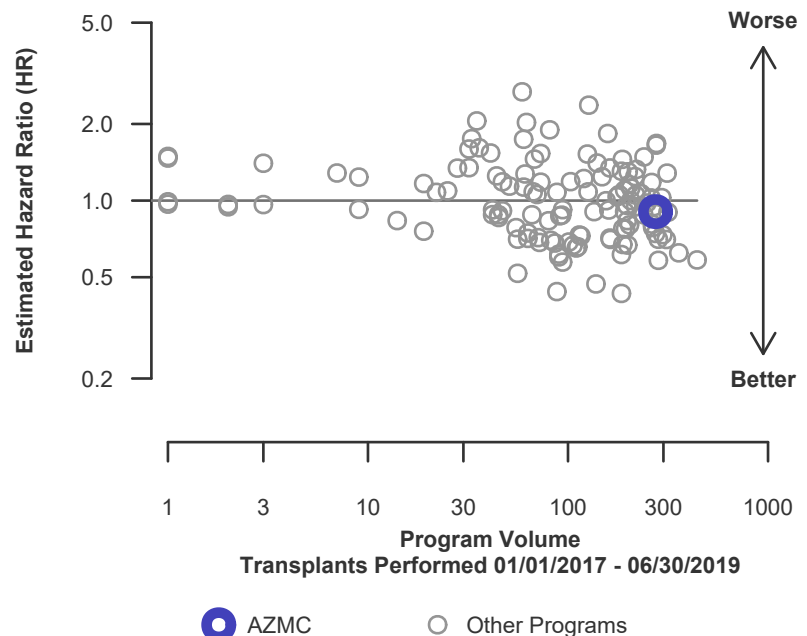


Figure C2D. Adult (18+) 1-month deceased donor graft failure HR program comparison





C. Transplant Information

Table C5L. Adult (18+) 1-month survival with a functioning living donor graft
Single organ transplants performed between 01/01/2017 and 06/30/2019
Deaths and retransplants are considered graft failures

	AZMC	U.S.
Number of transplants evaluated	1	845
Estimated probability of surviving with a functioning graft at 1 month (unadjusted for patient and donor characteristics)	100.00%	97.04%
Expected probability of surviving with a functioning graft at 1 month (adjusted for patient and donor characteristics)	97.04%	--
Number of observed graft failures (including deaths) during the first month after transplant	0	25
Number of expected graft failures (including deaths) during the first month after transplant	0.03	--
Estimated hazard ratio*	0.99	--
95% credible interval for the hazard ratio**	[0.12, 2.74]	--

* The hazard ratio provides an estimate of how Mayo Clinic Hospital (AZMC)'s results compare with what was expected based on modeling the transplant outcomes from all U.S. programs. A ratio above 1 indicates higher than expected graft failure rates (e.g., a hazard ratio of 1.5 would indicate 50% higher risk), and a ratio below 1 indicates lower than expected graft failure rates (e.g., a hazard ratio of 0.75 would indicate 25% lower risk). If AZMC's graft failure rate were precisely the expected rate, the estimated hazard ratio would be 1.0.

** The 95% credible interval, [0.12, 2.74], indicates the location of AZMC's true hazard ratio with 95% probability. The best estimate is 1% lower risk of graft failure compared to an average program, but AZMC's performance could plausibly range from 88% reduced risk up to 174% increased risk.

Figure C1L. Adult (18+) 1-month living donor graft failure HR estimate

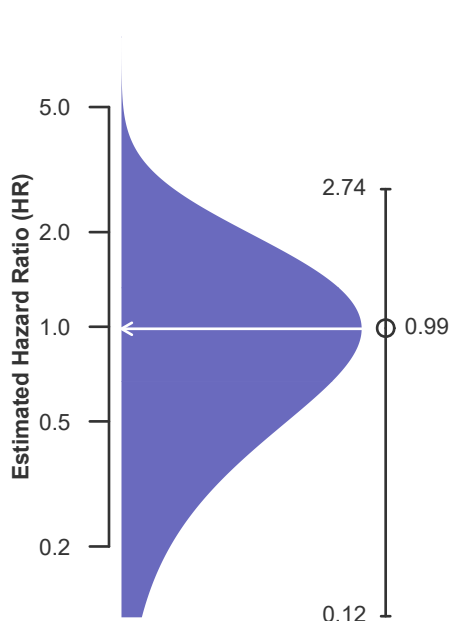
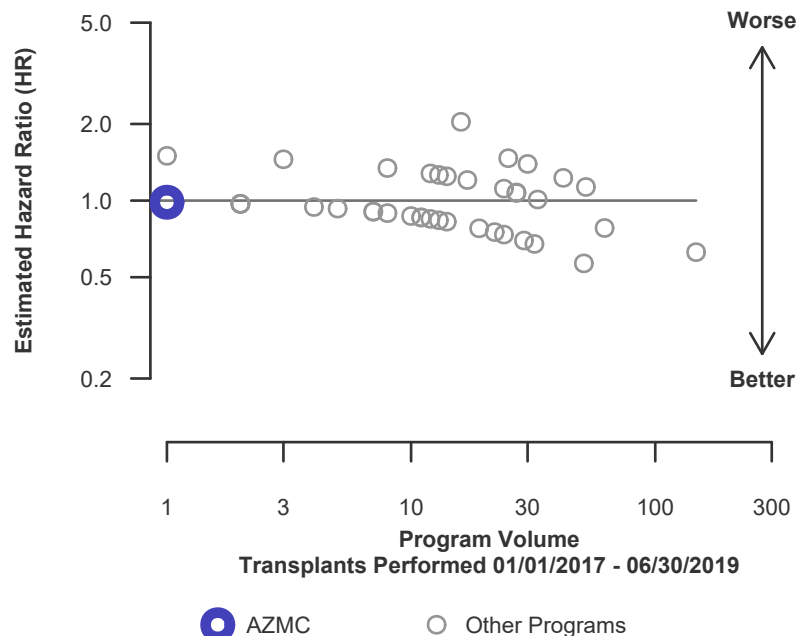


Figure C2L. Adult (18+) 1-month living donor graft failure HR program comparison





C. Transplant Information

Table C6. Adult (18+) 1-year survival with a functioning graft
Single organ transplants performed between 01/01/2017 and 06/30/2019
Deaths and retransplants are considered graft failures

	AZMC	U.S.
Number of transplants evaluated	275	17,388
Estimated probability of surviving with a functioning graft at 1 year (unadjusted for patient and donor characteristics)	94.17%	91.77%
Expected probability of surviving with a functioning graft at 1 year (adjusted for patient and donor characteristics)	90.65%	--
Number of observed graft failures (including deaths) during the first year after transplant	15	1,352
Number of expected graft failures (including deaths) during the first year after transplant	24.90	--
Estimated hazard ratio*	0.63	--
95% credible interval for the hazard ratio**	[0.37, 0.97]	--

* The hazard ratio provides an estimate of how Mayo Clinic Hospital (AZMC)'s results compare with what was expected based on modeling the transplant outcomes from all U.S. programs. A ratio above 1 indicates higher than expected graft failure rates (e.g., a hazard ratio of 1.5 would indicate 50% higher risk), and a ratio below 1 indicates lower than expected graft failure rates (e.g., a hazard ratio of 0.75 would indicate 25% lower risk). If AZMC's graft failure rate were precisely the expected rate, the estimated hazard ratio would be 1.0.

** The 95% credible interval, [0.37, 0.97], indicates the location of AZMC's true hazard ratio with 95% probability. The best estimate is 37% lower risk of graft failure compared to an average program, but AZMC's performance could plausibly range from 63% reduced risk up to 3% reduced risk.

Figure C3. Adult (18+) 1-year graft failure HR estimate

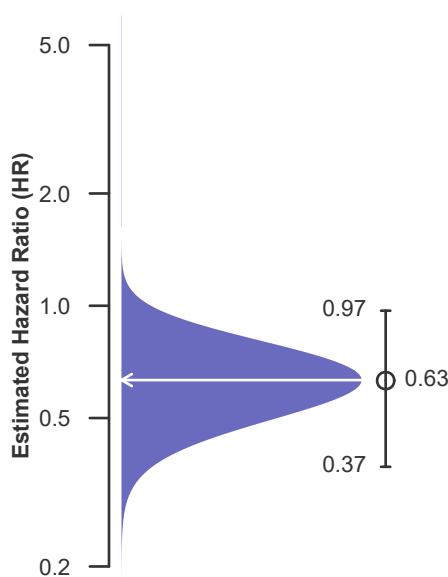
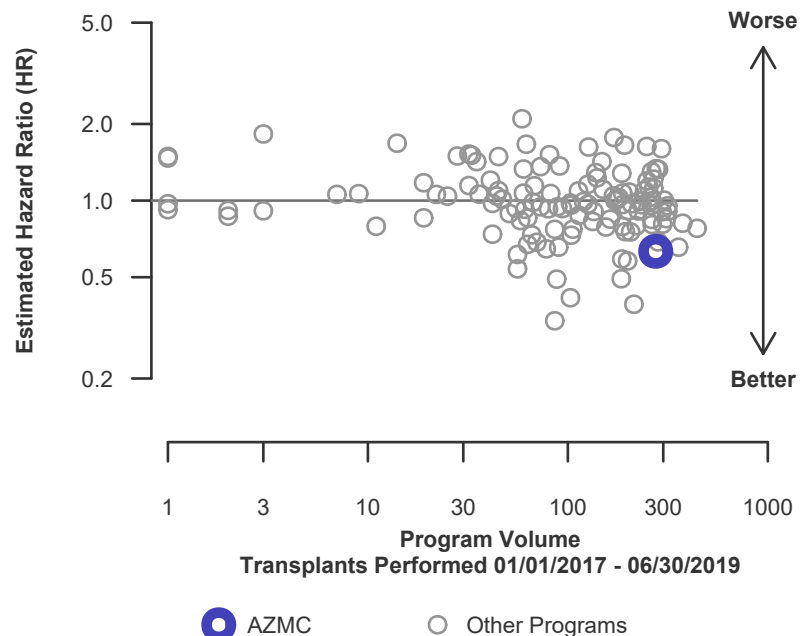


Figure C4. Adult (18+) 1-year graft failure HR program comparison





C. Transplant Information

Table C6D. Adult (18+) 1-year survival with a functioning deceased donor graft
Single organ transplants performed between 01/01/2017 and 06/30/2019
Deaths and retransplants are considered graft failures

	AZMC	U.S.
Number of transplants evaluated	274	16,543
Estimated probability of surviving with a functioning graft at 1 year (unadjusted for patient and donor characteristics)	94.15%	91.70%
Expected probability of surviving with a functioning graft at 1 year (adjusted for patient and donor characteristics)	90.64%	--
Number of observed graft failures (including deaths) during the first year after transplant	15	1,298
Number of expected graft failures (including deaths) during the first year after transplant	24.83	--
Estimated hazard ratio*	0.63	--
95% credible interval for the hazard ratio**	[0.37, 0.97]	--

* The hazard ratio provides an estimate of how Mayo Clinic Hospital (AZMC)'s results compare with what was expected based on modeling the transplant outcomes from all U.S. programs. A ratio above 1 indicates higher than expected graft failure rates (e.g., a hazard ratio of 1.5 would indicate 50% higher risk), and a ratio below 1 indicates lower than expected graft failure rates (e.g., a hazard ratio of 0.75 would indicate 25% lower risk). If AZMC's graft failure rate were precisely the expected rate, the estimated hazard ratio would be 1.0.

** The 95% credible interval, [0.37, 0.97], indicates the location of AZMC's true hazard ratio with 95% probability. The best estimate is 37% lower risk of graft failure compared to an average program, but AZMC's performance could plausibly range from 63% reduced risk up to 3% reduced risk.

Figure C3D. Adult (18+) 1-year deceased donor graft failure HR estimate

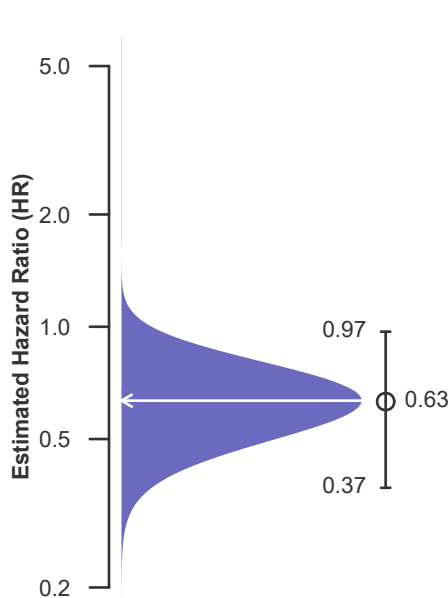
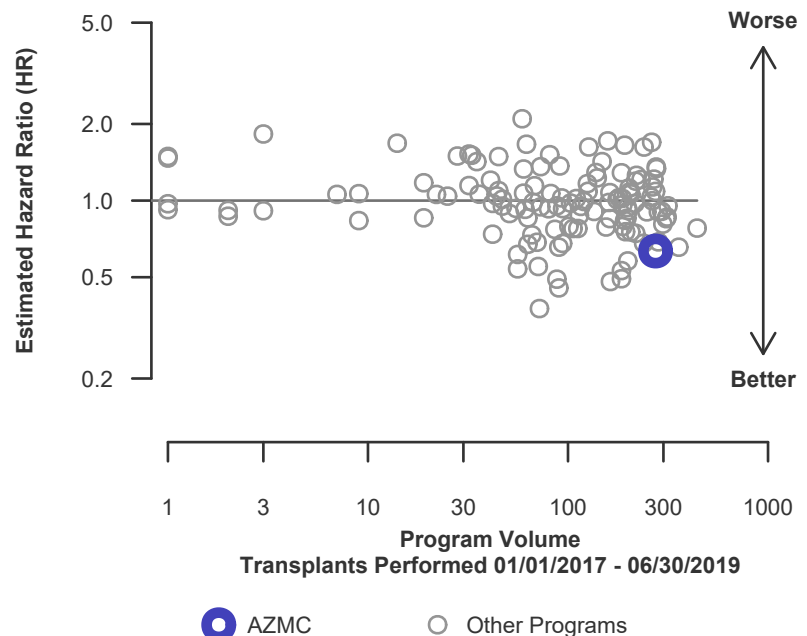


Figure C4D. Adult (18+) 1-year deceased donor graft failure HR program comparison





C. Transplant Information

Table C6L. Adult (18+) 1-year survival with a functioning living donor graft
Single organ transplants performed between 01/01/2017 and 06/30/2019
Deaths and retransplants are considered graft failures

	AZMC	U.S.
Number of transplants evaluated	1	845
Estimated probability of surviving with a functioning graft at 1 year (unadjusted for patient and donor characteristics)	100.00%	93.28%
Expected probability of surviving with a functioning graft at 1 year (adjusted for patient and donor characteristics)	93.28%	--
Number of observed graft failures (including deaths) during the first year after transplant	0	54
Number of expected graft failures (including deaths) during the first year after transplant	0.07	--
Estimated hazard ratio*	0.97	--
95% credible interval for the hazard ratio**	[0.12, 2.69]	--

* The hazard ratio provides an estimate of how Mayo Clinic Hospital (AZMC)'s results compare with what was expected based on modeling the transplant outcomes from all U.S. programs. A ratio above 1 indicates higher than expected graft failure rates (e.g., a hazard ratio of 1.5 would indicate 50% higher risk), and a ratio below 1 indicates lower than expected graft failure rates (e.g., a hazard ratio of 0.75 would indicate 25% lower risk). If AZMC's graft failure rate were precisely the expected rate, the estimated hazard ratio would be 1.0.

** The 95% credible interval, [0.12, 2.69], indicates the location of AZMC's true hazard ratio with 95% probability. The best estimate is 3% lower risk of graft failure compared to an average program, but AZMC's performance could plausibly range from 88% reduced risk up to 169% increased risk.

Figure C3L. Adult (18+) 1-year living donor graft failure HR estimate

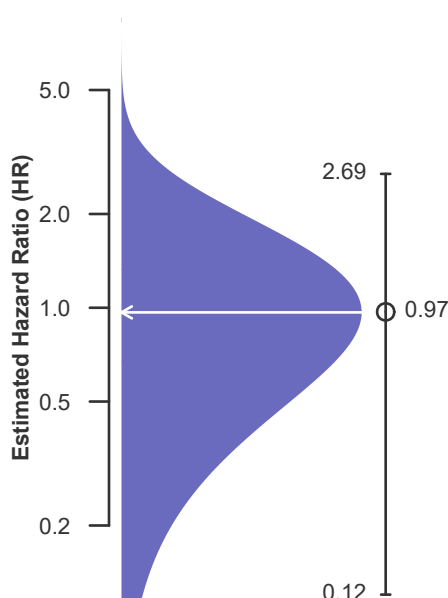
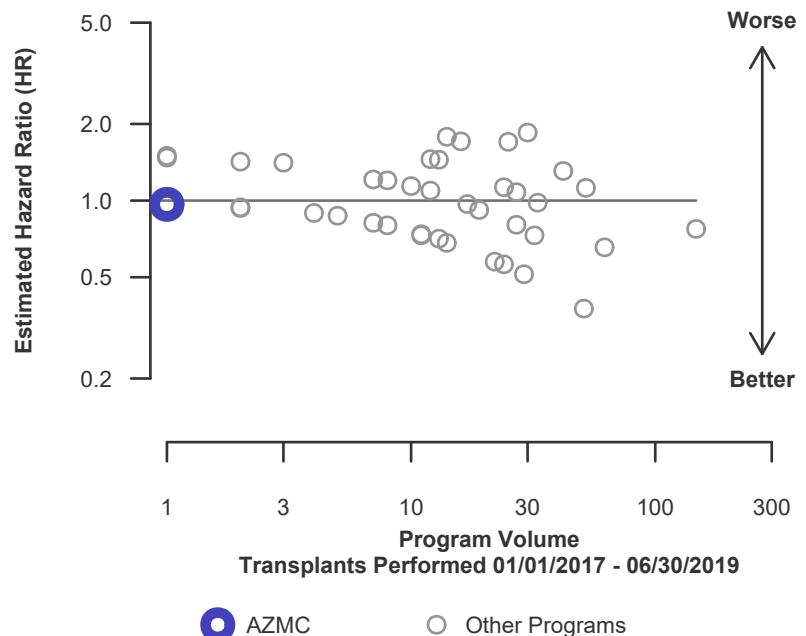


Figure C4L. Adult (18+) 1-year living donor graft failure HR program comparison





C. Transplant Information

Table C7. Adult (18+) 3-year survival with a functioning graft
Single organ transplants performed between 07/01/2014 and 12/31/2016
Deaths and retransplants are considered graft failures

	AZMC	U.S.
Number of transplants evaluated	230	15,208
Estimated probability of surviving with a functioning graft at 3 years (unadjusted for patient and donor characteristics)	85.22%	84.64%
Expected probability of surviving with a functioning graft at 3 years (adjusted for patient and donor characteristics)	84.22%	--
Number of observed graft failures (including deaths) during the first 3 years after transplant	34	2,336
Number of expected graft failures (including deaths) during the first 3 years after transplant	36.60	--
Estimated hazard ratio*	0.93	--
95% credible interval for the hazard ratio**	[0.65, 1.26]	--

* The hazard ratio provides an estimate of how Mayo Clinic Hospital (AZMC)'s results compare with what was expected based on modeling the transplant outcomes from all U.S. programs. A ratio above 1 indicates higher than expected graft failure rates (e.g., a hazard ratio of 1.5 would indicate 50% higher risk), and a ratio below 1 indicates lower than expected graft failure rates (e.g., a hazard ratio of 0.75 would indicate 25% lower risk). If AZMC's graft failure rate were precisely the expected rate, the estimated hazard ratio would be 1.0.

** The 95% credible interval, [0.65, 1.26], indicates the location of AZMC's true hazard ratio with 95% probability. The best estimate is 7% lower risk of graft failure compared to an average program, but AZMC's performance could plausibly range from 35% reduced risk up to 26% increased risk.

Figure C5. Adult (18+) 3-year graft failure HR estimate

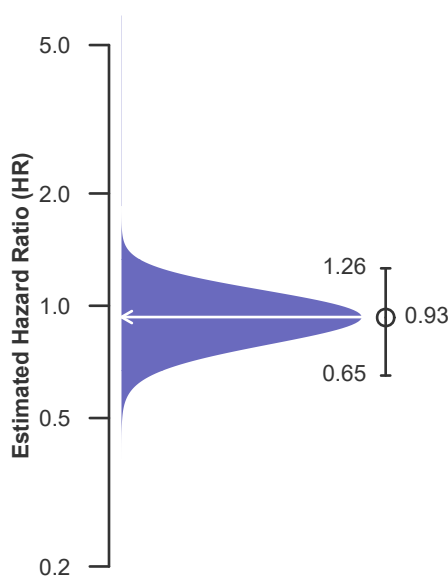
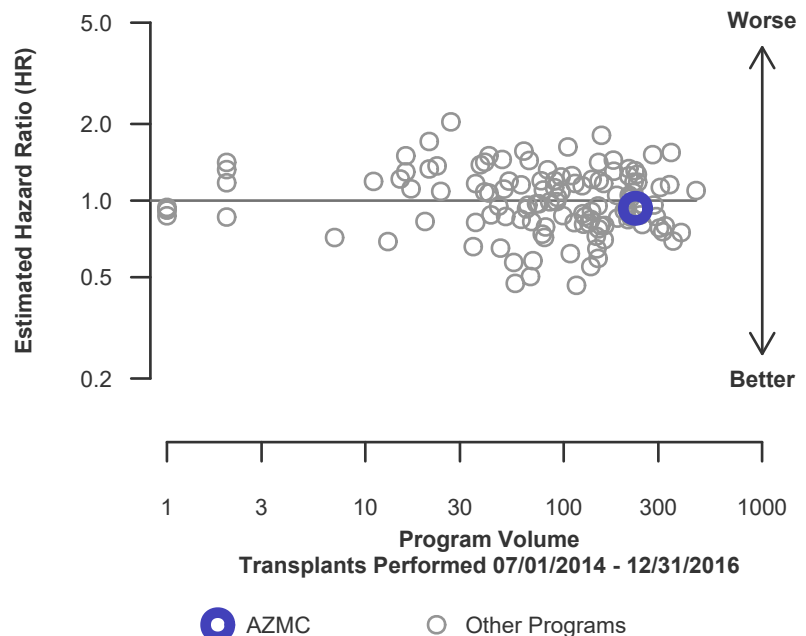


Figure C6. Adult (18+) 3-year graft failure HR program comparison





C. Transplant Information

Table C7D. Adult (18+) 3-year survival with a functioning deceased donor graft
Single organ transplants performed between 07/01/2014 and 12/31/2016
Deaths and retransplants are considered graft failures

	AZMC	U.S.
Number of transplants evaluated	221	14,521
Estimated probability of surviving with a functioning graft at 3 years (unadjusted for patient and donor characteristics)	85.97%	84.66%
Expected probability of surviving with a functioning graft at 3 years (adjusted for patient and donor characteristics)	84.22%	--
Number of observed graft failures (including deaths) during the first 3 years after transplant	31	2,228
Number of expected graft failures (including deaths) during the first 3 years after transplant	35.33	--
Estimated hazard ratio*	0.88	--
95% credible interval for the hazard ratio**	[0.61, 1.21]	--

* The hazard ratio provides an estimate of how Mayo Clinic Hospital (AZMC)'s results compare with what was expected based on modeling the transplant outcomes from all U.S. programs. A ratio above 1 indicates higher than expected graft failure rates (e.g., a hazard ratio of 1.5 would indicate 50% higher risk), and a ratio below 1 indicates lower than expected graft failure rates (e.g., a hazard ratio of 0.75 would indicate 25% lower risk). If AZMC's graft failure rate were precisely the expected rate, the estimated hazard ratio would be 1.0.

** The 95% credible interval, [0.61, 1.21], indicates the location of AZMC's true hazard ratio with 95% probability. The best estimate is 12% lower risk of graft failure compared to an average program, but AZMC's performance could plausibly range from 39% reduced risk up to 21% increased risk.

Figure C5D. Adult (18+) 3-year deceased donor graft failure HR estimate

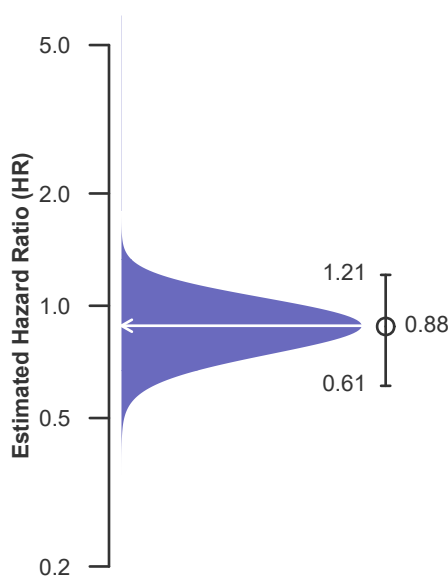
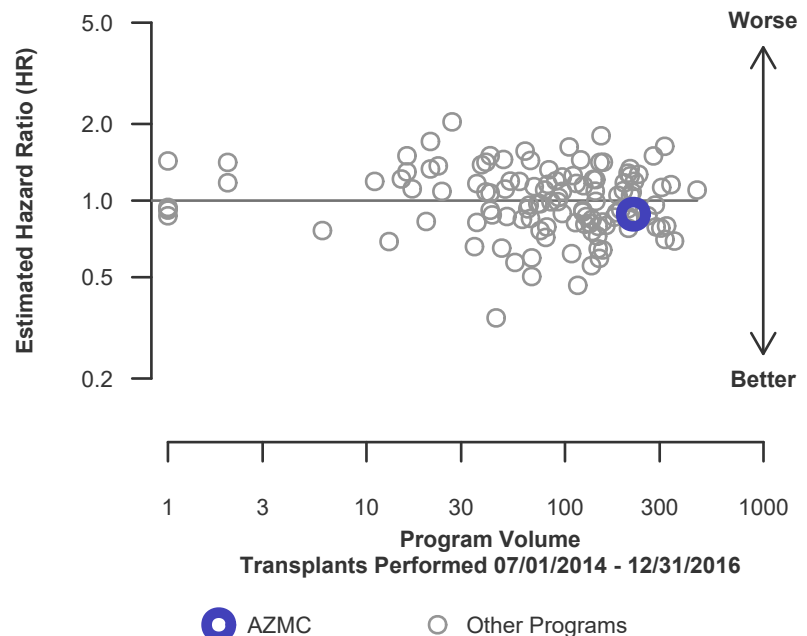


Figure C6D. Adult (18+) 3-year deceased donor graft failure HR program comparison





C. Transplant Information

Table C7L. Adult (18+) 3-year survival with a functioning living donor graft
Single organ transplants performed between 07/01/2014 and 12/31/2016
Deaths and retransplants are considered graft failures

	AZMC	U.S.
Number of transplants evaluated	9	687
Estimated probability of surviving with a functioning graft at 3 years (unadjusted for patient and donor characteristics)	66.67%	84.28%
Expected probability of surviving with a functioning graft at 3 years (adjusted for patient and donor characteristics)	84.29%	--
Number of observed graft failures (including deaths) during the first 3 years after transplant	3	108
Number of expected graft failures (including deaths) during the first 3 years after transplant	1.27	--
Estimated hazard ratio*	1.53	--
95% credible interval for the hazard ratio**	[0.50, 3.13]	--

* The hazard ratio provides an estimate of how Mayo Clinic Hospital (AZMC)'s results compare with what was expected based on modeling the transplant outcomes from all U.S. programs. A ratio above 1 indicates higher than expected graft failure rates (e.g., a hazard ratio of 1.5 would indicate 50% higher risk), and a ratio below 1 indicates lower than expected graft failure rates (e.g., a hazard ratio of 0.75 would indicate 25% lower risk). If AZMC's graft failure rate were precisely the expected rate, the estimated hazard ratio would be 1.0.

** The 95% credible interval, [0.50, 3.13], indicates the location of AZMC's true hazard ratio with 95% probability. The best estimate is 53% higher risk of graft failure compared to an average program, but AZMC's performance could plausibly range from 50% reduced risk up to 213% increased risk.

Figure C5L. Adult (18+) 3-year living donor graft failure HR estimate

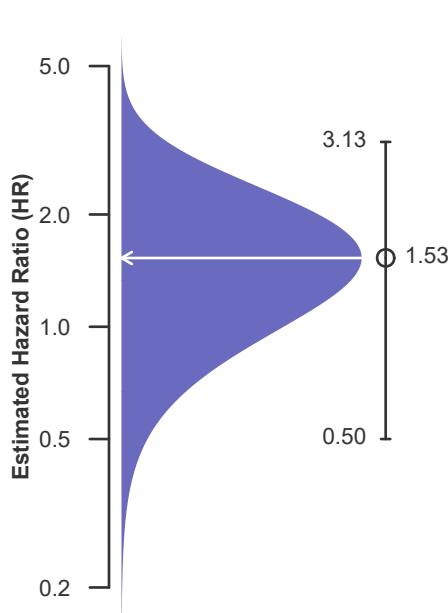
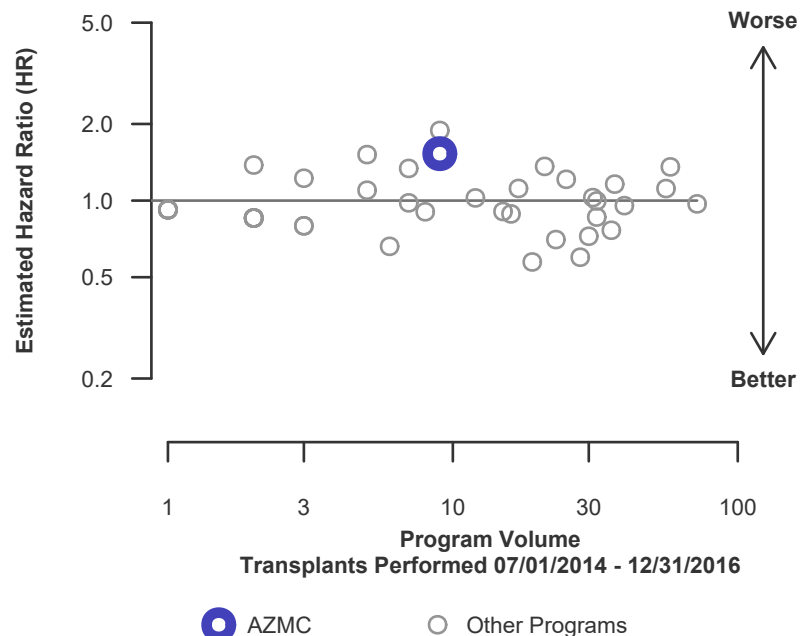


Figure C6L. Adult (18+) 3-year living donor graft failure HR program comparison





C. Transplant Information

Table C8. Pediatric (<18) 1-month survival with a functioning graft
Single organ transplants performed between 01/01/2017 and 06/30/2019
Deaths and retransplants are considered graft failures

This center did not perform any
transplants relevant to
this table during
01/01/2017-06/30/2019

Figure C7. Pediatric (<18)
1-month graft failure HR estimate

This center did not perform any
transplants relevant to
this figure during
01/01/2017-06/30/2019

**Figure C8. Pediatric (<18) 1-month graft failure HR program
comparison**

This center did not perform any
transplants relevant to
this figure during
01/01/2017-06/30/2019



C. Transplant Information

Table C8D. Pediatric (<18) 1-month survival with a functioning deceased donor graft
Single organ transplants performed between 01/01/2017 and 06/30/2019
Deaths and retransplants are considered graft failures

This center did not perform any
transplants relevant to
this table during
01/01/2017-06/30/2019

Figure C7D. Pediatric (<18)
1-month deceased donor graft
failure HR estimate

This center did not perform any
transplants relevant to
this figure during
01/01/2017-06/30/2019

Figure C8D. Pediatric (<18) 1-month deceased donor graft
failure HR program comparison

This center did not perform any
transplants relevant to
this figure during
01/01/2017-06/30/2019



C. Transplant Information

Table C8L. Pediatric (<18) 1-month survival with a functioning living donor graft
Single organ transplants performed between 01/01/2017 and 06/30/2019
Deaths and retransplants are considered graft failures

This center did not perform any
transplants relevant to
this table during
01/01/2017-06/30/2019

Figure C7L. Pediatric (<18)
1-month living donor graft failure
HR estimate

This center did not perform any
transplants relevant to
this figure during
01/01/2017-06/30/2019

Figure C8L. Pediatric (<18) 1-month living donor graft failure
HR program comparison

This center did not perform any
transplants relevant to
this figure during
01/01/2017-06/30/2019



C. Transplant Information

Table C9. Pediatric (<18) 1-year survival with a functioning graft
Single organ transplants performed between 01/01/2017 and 06/30/2019
Deaths and retransplants are considered graft failures

This center did not perform any
transplants relevant to
this table during
01/01/2017-06/30/2019

**Figure C9. Pediatric (<18) 1-year
graft failure HR estimate**

This center did not perform any
transplants relevant to
this figure during
01/01/2017-06/30/2019

**Figure C10. Pediatric (<18) 1-year graft failure HR program
comparison**

This center did not perform any
transplants relevant to
this figure during
01/01/2017-06/30/2019



C. Transplant Information

Table C9D. Pediatric (<18) 1-year survival with a functioning deceased donor graft
Single organ transplants performed between 01/01/2017 and 06/30/2019
Deaths and retransplants are considered graft failures

This center did not perform any
transplants relevant to
this table during
01/01/2017-06/30/2019

Figure C9D. Pediatric (<18)
1-year deceased donor graft
failure HR estimate

This center did not perform any
transplants relevant to
this figure during
01/01/2017-06/30/2019

Figure C10D. Pediatric (<18) 1-year deceased donor graft
failure HR program comparison

This center did not perform any
transplants relevant to
this figure during
01/01/2017-06/30/2019



C. Transplant Information

Table C9L. Pediatric (<18) 1-year survival with a functioning living donor graft
Single organ transplants performed between 01/01/2017 and 06/30/2019
Deaths and retransplants are considered graft failures

This center did not perform any
transplants relevant to
this table during
01/01/2017-06/30/2019

**Figure C9L. Pediatric (<18) 1-year
living donor graft failure HR
estimate**

This center did not perform any
transplants relevant to
this figure during
01/01/2017-06/30/2019

**Figure C10L. Pediatric (<18) 1-year living donor graft failure
HR program comparison**

This center did not perform any
transplants relevant to
this figure during
01/01/2017-06/30/2019



C. Transplant Information

Table C10. Pediatric (<18) 3-year survival with a functioning graft
Single organ transplants performed between 07/01/2014 and 12/31/2016
Deaths and retransplants are considered graft failures

This center did not perform any
transplants relevant to
this table during
07/01/2014-12/31/2016

**Figure C11. Pediatric (<18) 3-year
graft failure HR estimate**

This center did not perform any
transplants relevant to
this figure during
07/01/2014-12/31/2016

**Figure C12. Pediatric (<18) 3-year graft failure HR program
comparison**

This center did not perform any
transplants relevant to
this figure during
07/01/2014-12/31/2016



C. Transplant Information

Table C10D. Pediatric (<18) 3-year survival with a functioning deceased donor graft
Single organ transplants performed between 07/01/2014 and 12/31/2016
Deaths and retransplants are considered graft failures

This center did not perform any
transplants relevant to
this table during
07/01/2014-12/31/2016

Figure C11D. Pediatric (<18)
3-year deceased donor graft
failure HR estimate

This center did not perform any
transplants relevant to
this figure during
07/01/2014-12/31/2016

Figure C12D. Pediatric (<18) 3-year deceased donor graft
failure HR program comparison

This center did not perform any
transplants relevant to
this figure during
07/01/2014-12/31/2016



C. Transplant Information

Table C10L. Pediatric (<18) 3-year survival with a functioning living donor graft
Single organ transplants performed between 07/01/2014 and 12/31/2016
Deaths and retransplants are considered graft failures

This center did not perform any
transplants relevant to
this table during
07/01/2014-12/31/2016

Figure C11L. Pediatric (<18)
3-year living donor graft failure
HR estimate

This center did not perform any
transplants relevant to
this figure during
07/01/2014-12/31/2016

Figure C12L. Pediatric (<18) 3-year living donor graft failure
HR program comparison

This center did not perform any
transplants relevant to
this figure during
07/01/2014-12/31/2016



C. Transplant Information

Table C11. Adult (18+) 1-month patient survival

Single organ transplants performed between 01/01/2017 and 06/30/2019
Retransplants excluded

	AZMC	U.S.
Number of transplants evaluated	260	16,732
Estimated probability of surviving at 1 month (unadjusted for patient and donor characteristics)	97.69%	97.85%
Expected probability of surviving at 1 month (adjusted for patient and donor characteristics)	97.83%	--
Number of observed deaths during the first month after transplant	6	360
Number of expected deaths during the first month after transplant	5.62	--
Estimated hazard ratio*	1.05	--
95% credible interval for the hazard ratio**	[0.45, 1.89]	--

* The hazard ratio provides an estimate of how Mayo Clinic Hospital (AZMC)'s results compare with what was expected based on modeling the transplant outcomes from all U.S. programs. A ratio above 1 indicates higher than expected patient death rates (e.g., a hazard ratio of 1.5 would indicate 50% higher risk), and a ratio below 1 indicates lower than expected patient death rates (e.g., a hazard ratio of 0.75 would indicate 25% lower risk). If AZMC's patient death rate were precisely the expected rate, the estimated hazard ratio would be 1.0.

** The 95% credible interval, [0.45, 1.89], indicates the location of AZMC's true hazard ratio with 95% probability. The best estimate is 5% higher risk of patient death compared to an average program, but AZMC's performance could plausibly range from 55% reduced risk up to 89% increased risk.

Figure C13. Adult (18+) 1-month patient death HR estimate

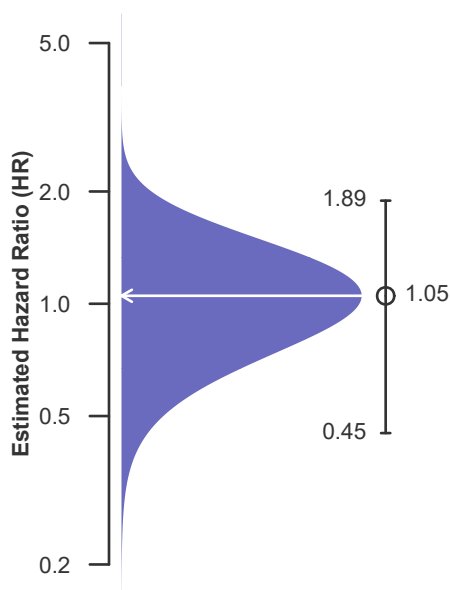
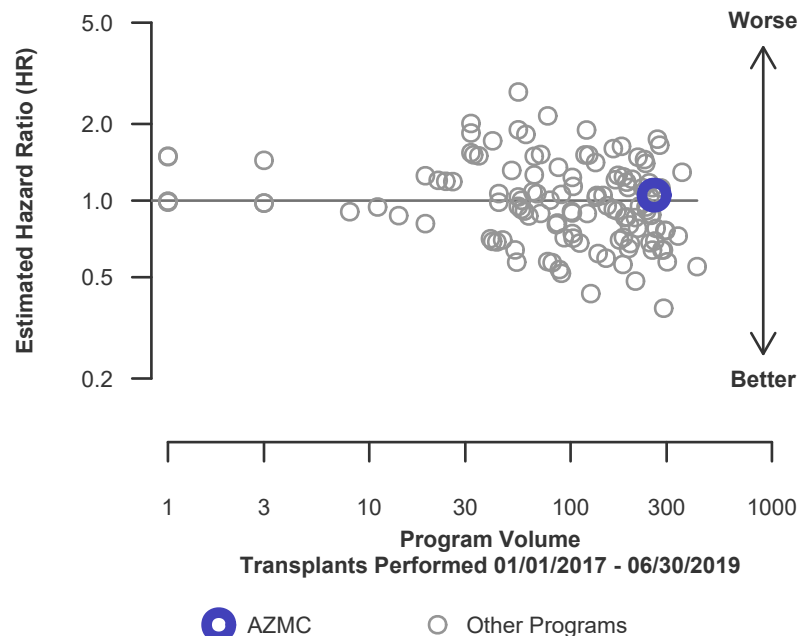


Figure C14. Adult (18+) 1-month patient death HR program comparison





C. Transplant Information

Table C11D. Adult (18+) 1-month patient survival (deceased donor graft recipients)
Single organ transplants performed between 01/01/2017 and 06/30/2019
Retransplants excluded

	AZMC	U.S.
Number of transplants evaluated	259	15,895
Estimated probability of surviving at 1 month (unadjusted for patient and donor characteristics)	97.68%	97.79%
Expected probability of surviving at 1 month (adjusted for patient and donor characteristics)	97.82%	--
Number of observed deaths during the first month after transplant	6	351
Number of expected deaths during the first month after transplant	5.60	--
Estimated hazard ratio*	1.05	--
95% credible interval for the hazard ratio**	[0.45, 1.90]	--

* The hazard ratio provides an estimate of how Mayo Clinic Hospital (AZMC)'s results compare with what was expected based on modeling the transplant outcomes from all U.S. programs. A ratio above 1 indicates higher than expected patient death rates (e.g., a hazard ratio of 1.5 would indicate 50% higher risk), and a ratio below 1 indicates lower than expected patient death rates (e.g., a hazard ratio of 0.75 would indicate 25% lower risk). If AZMC's patient death rate were precisely the expected rate, the estimated hazard ratio would be 1.0.

** The 95% credible interval, [0.45, 1.90], indicates the location of AZMC's true hazard ratio with 95% probability. The best estimate is 5% higher risk of patient death compared to an average program, but AZMC's performance could plausibly range from 55% reduced risk up to 90% increased risk.

Figure C13D. Adult (18+) 1-month patient death HR estimate (deceased donor grafts)

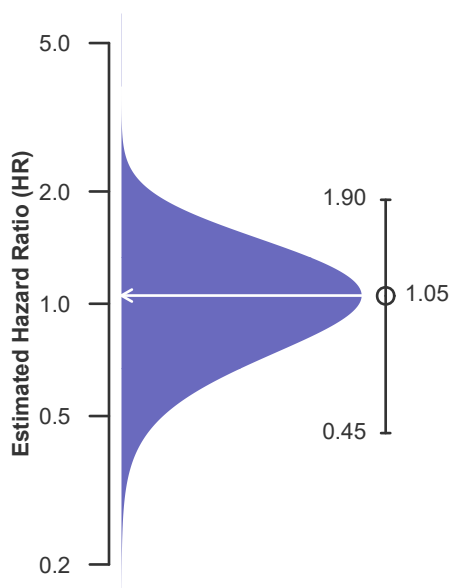
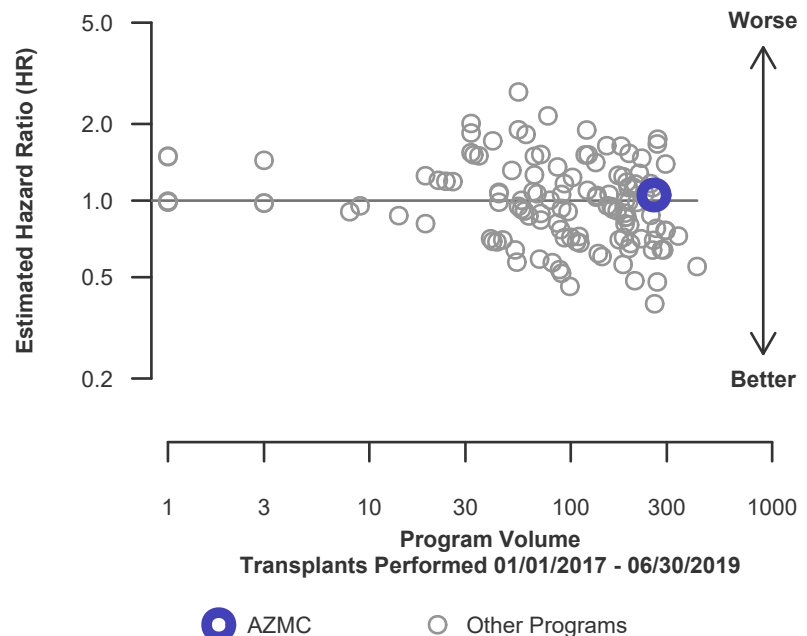


Figure C14D. Adult (18+) 1-month patient death HR program comparison (deceased donor grafts)





C. Transplant Information

Table C11L. Adult (18+) 1-month patient survival (living donor graft recipients)
Single organ transplants performed between 01/01/2017 and 06/30/2019
Retransplants excluded

	AZMC	U.S.
Number of transplants evaluated	1	837
Estimated probability of surviving at 1 month (unadjusted for patient and donor characteristics)	100.00%	98.92%
Expected probability of surviving at 1 month (adjusted for patient and donor characteristics)	98.93%	--
Number of observed deaths during the first month after transplant	0	9
Number of expected deaths during the first month after transplant	0.01	--
Estimated hazard ratio*	0.99	--
95% credible interval for the hazard ratio**	[0.12, 2.77]	--

* The hazard ratio provides an estimate of how Mayo Clinic Hospital (AZMC)'s results compare with what was expected based on modeling the transplant outcomes from all U.S. programs. A ratio above 1 indicates higher than expected patient death rates (e.g., a hazard ratio of 1.5 would indicate 50% higher risk), and a ratio below 1 indicates lower than expected patient death rates (e.g., a hazard ratio of 0.75 would indicate 25% lower risk). If AZMC's patient death rate were precisely the expected rate, the estimated hazard ratio would be 1.0.

** The 95% credible interval, [0.12, 2.77], indicates the location of AZMC's true hazard ratio with 95% probability. The best estimate is 1% lower risk of patient death compared to an average program, but AZMC's performance could plausibly range from 88% reduced risk up to 177% increased risk.

Figure C13L. Adult (18+) 1-month patient death HR estimate (living donor grafts)

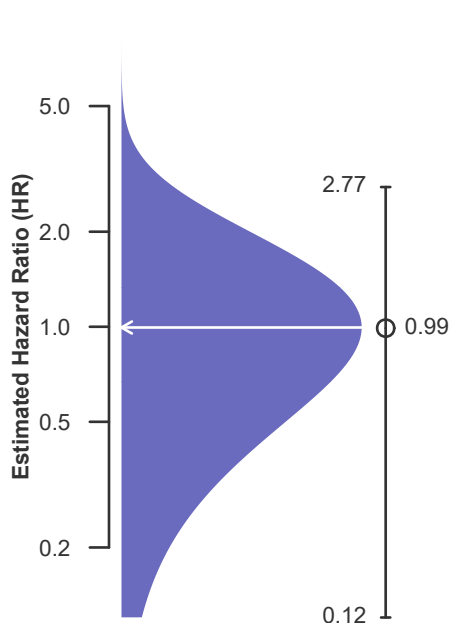
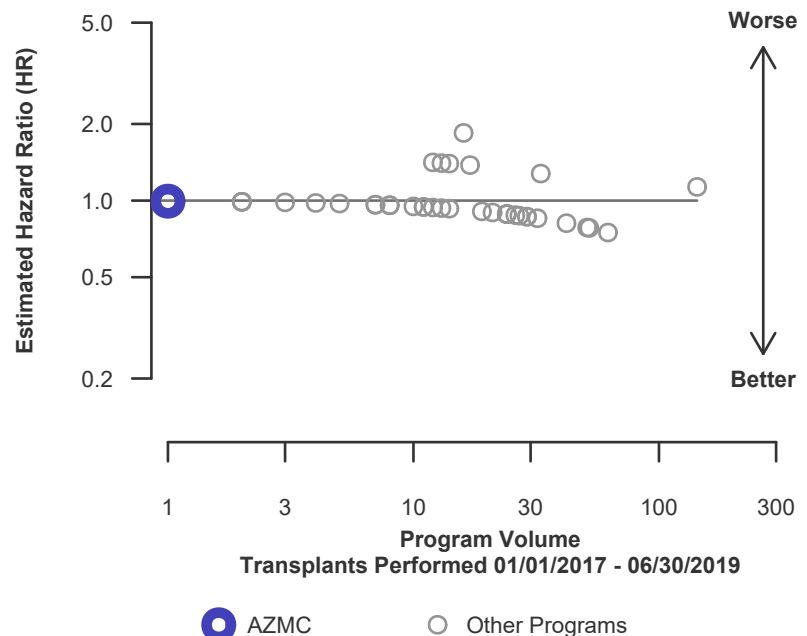


Figure C14L. Adult (18+) 1-month patient death HR program comparison (living donor grafts)





C. Transplant Information

Table C12. Adult (18+) 1-year patient survival

Single organ transplants performed between 01/01/2017 and 06/30/2019
Retransplants excluded

	AZMC	U.S.
Number of transplants evaluated	260	16,732
Estimated probability of surviving at 1 year (unadjusted for patient and donor characteristics)	95.76%	93.51%
Expected probability of surviving at 1 year (adjusted for patient and donor characteristics)	93.27%	--
Number of observed deaths during the first year after transplant	10	1,014
Number of expected deaths during the first year after transplant	16.65	--
Estimated hazard ratio*	0.64	--
95% credible interval for the hazard ratio**	[0.33, 1.06]	--

* The hazard ratio provides an estimate of how Mayo Clinic Hospital (AZMC)'s results compare with what was expected based on modeling the transplant outcomes from all U.S. programs. A ratio above 1 indicates higher than expected patient death rates (e.g., a hazard ratio of 1.5 would indicate 50% higher risk), and a ratio below 1 indicates lower than expected patient death rates (e.g., a hazard ratio of 0.75 would indicate 25% lower risk). If AZMC's patient death rate were precisely the expected rate, the estimated hazard ratio would be 1.0.

** The 95% credible interval, [0.33, 1.06], indicates the location of AZMC's true hazard ratio with 95% probability. The best estimate is 36% lower risk of patient death compared to an average program, but AZMC's performance could plausibly range from 67% reduced risk up to 6% increased risk.

Figure C15. Adult (18+) 1-year patient death HR estimate

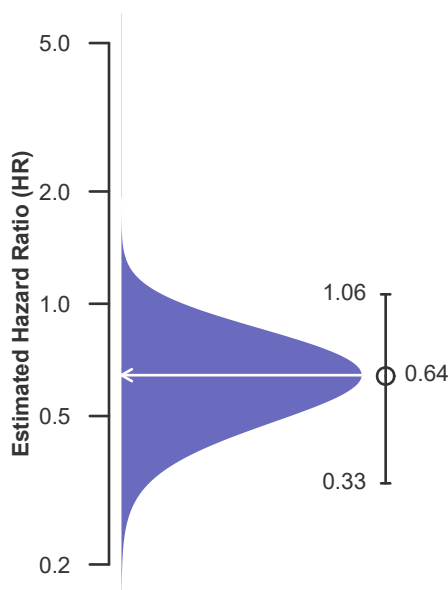
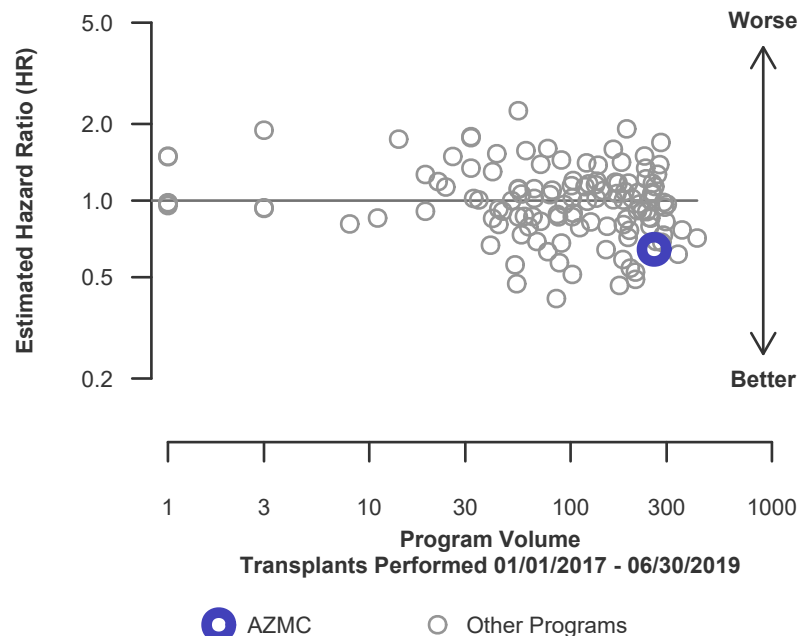


Figure C16. Adult (18+) 1-year patient death HR program comparison





C. Transplant Information

**Table C12D. Adult (18+) 1-year patient survival (deceased donor graft recipients)
Single organ transplants performed between 01/01/2017 and 06/30/2019
Retransplants excluded**

	AZMC	U.S.
Number of transplants evaluated	259	15,895
Estimated probability of surviving at 1 year (unadjusted for patient and donor characteristics)	95.74%	93.37%
Expected probability of surviving at 1 year (adjusted for patient and donor characteristics)	93.25%	--
Number of observed deaths during the first year after transplant	10	986
Number of expected deaths during the first year after transplant	16.61	--
Estimated hazard ratio*	0.64	--
95% credible interval for the hazard ratio**	[0.33, 1.06]	--

* The hazard ratio provides an estimate of how Mayo Clinic Hospital (AZMC)'s results compare with what was expected based on modeling the transplant outcomes from all U.S. programs. A ratio above 1 indicates higher than expected patient death rates (e.g., a hazard ratio of 1.5 would indicate 50% higher risk), and a ratio below 1 indicates lower than expected patient death rates (e.g., a hazard ratio of 0.75 would indicate 25% lower risk). If AZMC's patient death rate were precisely the expected rate, the estimated hazard ratio would be 1.0.

** The 95% credible interval, [0.33, 1.06], indicates the location of AZMC's true hazard ratio with 95% probability. The best estimate is 36% lower risk of patient death compared to an average program, but AZMC's performance could plausibly range from 67% reduced risk up to 6% increased risk.

Figure C15D. Adult (18+) 1-year patient death HR estimate (deceased donor grafts)

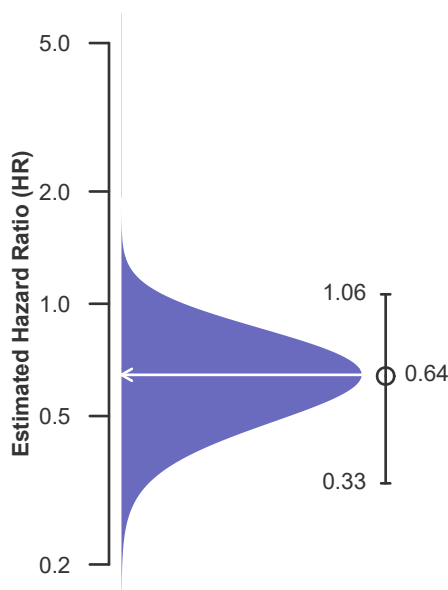
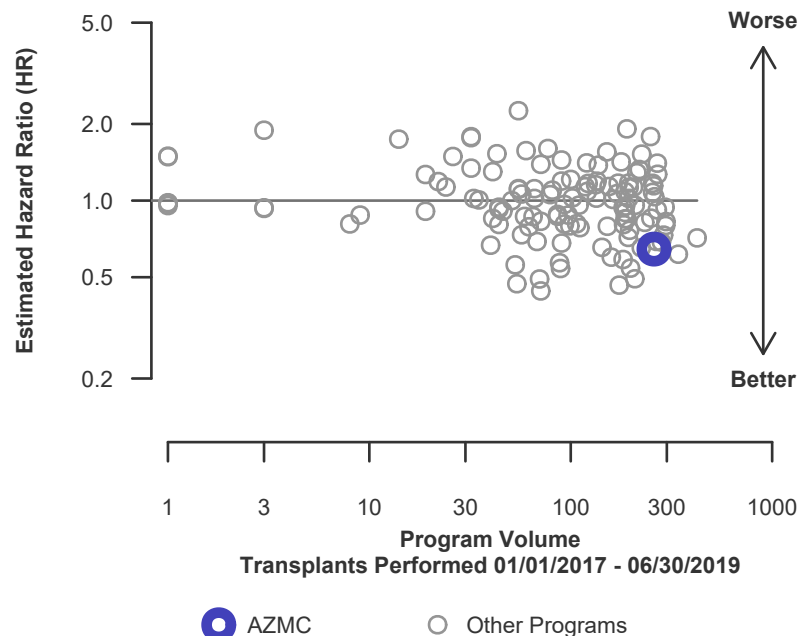


Figure C16D. Adult (18+) 1-year patient death HR program comparison (deceased donor grafts)





C. Transplant Information

**Table C12L. Adult (18+) 1-year patient survival (living donor graft recipients)
Single organ transplants performed between 01/01/2017 and 06/30/2019
Retransplants excluded**

	AZMC	U.S.
Number of transplants evaluated	1	837
Estimated probability of surviving at 1 year (unadjusted for patient and donor characteristics)	100.00%	96.32%
Expected probability of surviving at 1 year (adjusted for patient and donor characteristics)	96.32%	--
Number of observed deaths during the first year after transplant	0	28
Number of expected deaths during the first year after transplant	0.04	--
Estimated hazard ratio*	0.98	--
95% credible interval for the hazard ratio**	[0.12, 2.73]	--

* The hazard ratio provides an estimate of how Mayo Clinic Hospital (AZMC)'s results compare with what was expected based on modeling the transplant outcomes from all U.S. programs. A ratio above 1 indicates higher than expected patient death rates (e.g., a hazard ratio of 1.5 would indicate 50% higher risk), and a ratio below 1 indicates lower than expected patient death rates (e.g., a hazard ratio of 0.75 would indicate 25% lower risk). If AZMC's patient death rate were precisely the expected rate, the estimated hazard ratio would be 1.0.

** The 95% credible interval, [0.12, 2.73], indicates the location of AZMC's true hazard ratio with 95% probability. The best estimate is 2% lower risk of patient death compared to an average program, but AZMC's performance could plausibly range from 88% reduced risk up to 173% increased risk.

Figure C15L. Adult (18+) 1-year patient death HR estimate (living donor grafts)

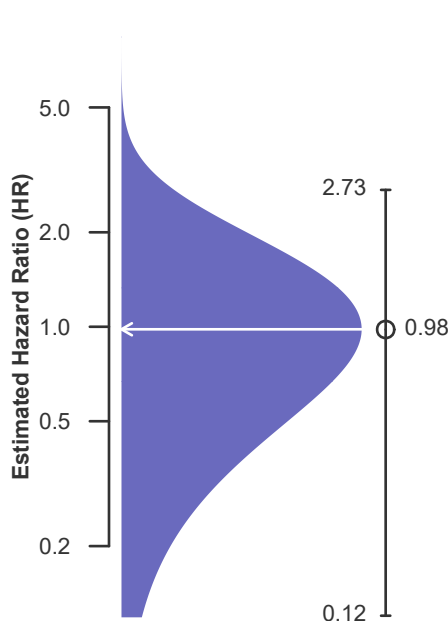
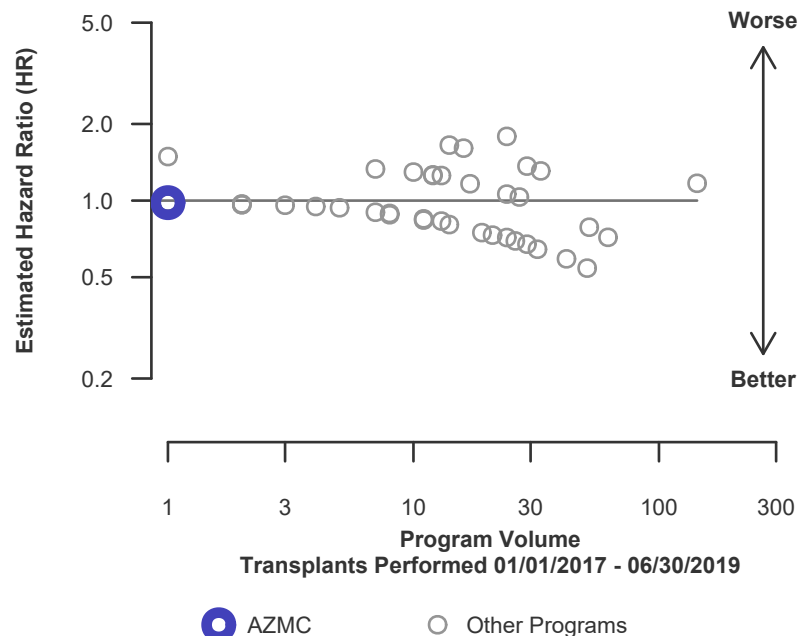


Figure C16L. Adult (18+) 1-year patient death HR program comparison (living donor grafts)





C. Transplant Information

Table C13. Adult (18+) 3-year patient survival

**Single organ transplants performed between 07/01/2014 and 12/31/2016
Retransplants excluded**

	AZMC	U.S.
Number of transplants evaluated	219	14,577
Estimated probability of surviving at 3 years (unadjusted for patient and donor characteristics)	90.87%	87.03%
Expected probability of surviving at 3 years (adjusted for patient and donor characteristics)	87.13%	--
Number of observed deaths during the first 3 years after transplant	20	1,890
Number of expected deaths during the first 3 years after transplant	28.98	--
Estimated hazard ratio*	0.71	--
95% credible interval for the hazard ratio**	[0.45, 1.04]	--

* The hazard ratio provides an estimate of how Mayo Clinic Hospital (AZMC)'s results compare with what was expected based on modeling the transplant outcomes from all U.S. programs. A ratio above 1 indicates higher than expected patient death rates (e.g., a hazard ratio of 1.5 would indicate 50% higher risk), and a ratio below 1 indicates lower than expected patient death rates (e.g., a hazard ratio of 0.75 would indicate 25% lower risk). If AZMC's patient death rate were precisely the expected rate, the estimated hazard ratio would be 1.0.

** The 95% credible interval, [0.45, 1.04], indicates the location of AZMC's true hazard ratio with 95% probability. The best estimate is 29% lower risk of patient death compared to an average program, but AZMC's performance could plausibly range from 55% reduced risk up to 4% increased risk.

Figure C17. Adult (18+) 3-year patient death HR estimate

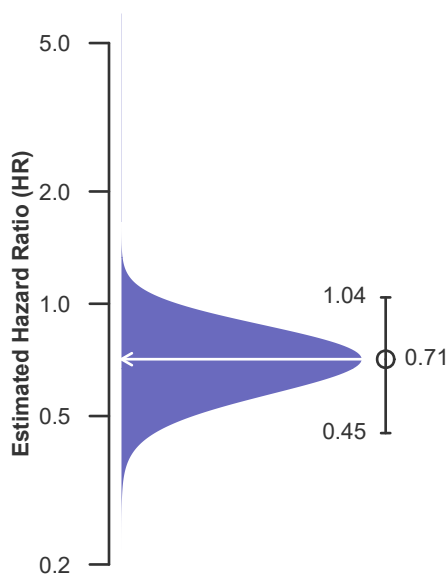
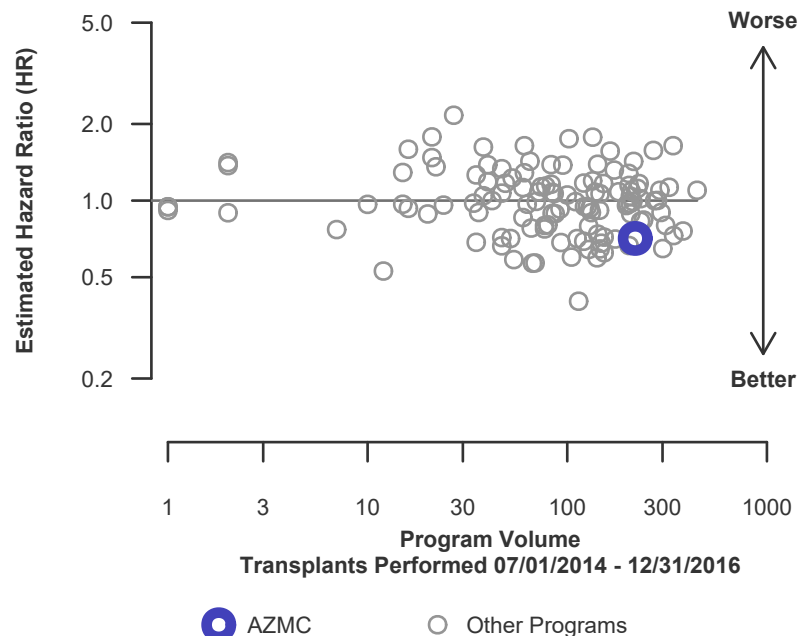


Figure C18. Adult (18+) 3-year patient death HR program comparison





C. Transplant Information

Table C13D. Adult (18+) 3-year patient survival (deceased donor graft recipients)
Single organ transplants performed between 07/01/2014 and 12/31/2016
Retransplants excluded

	AZMC	U.S.
Number of transplants evaluated	210	13,895
Estimated probability of surviving at 3 years (unadjusted for patient and donor characteristics)	90.95%	86.94%
Expected probability of surviving at 3 years (adjusted for patient and donor characteristics)	87.05%	--
Number of observed deaths during the first 3 years after transplant	19	1,815
Number of expected deaths during the first 3 years after transplant	27.96	--
Estimated hazard ratio*	0.70	--
95% credible interval for the hazard ratio**	[0.43, 1.03]	--

* The hazard ratio provides an estimate of how Mayo Clinic Hospital (AZMC)'s results compare with what was expected based on modeling the transplant outcomes from all U.S. programs. A ratio above 1 indicates higher than expected patient death rates (e.g., a hazard ratio of 1.5 would indicate 50% higher risk), and a ratio below 1 indicates lower than expected patient death rates (e.g., a hazard ratio of 0.75 would indicate 25% lower risk). If AZMC's patient death rate were precisely the expected rate, the estimated hazard ratio would be 1.0.

** The 95% credible interval, [0.43, 1.03], indicates the location of AZMC's true hazard ratio with 95% probability. The best estimate is 30% lower risk of patient death compared to an average program, but AZMC's performance could plausibly range from 57% reduced risk up to 3% increased risk.

Figure C17D. Adult (18+) 3-year patient death HR estimate (deceased donor grafts)

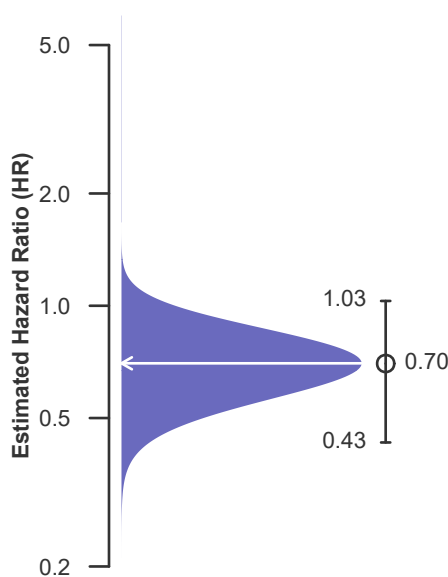
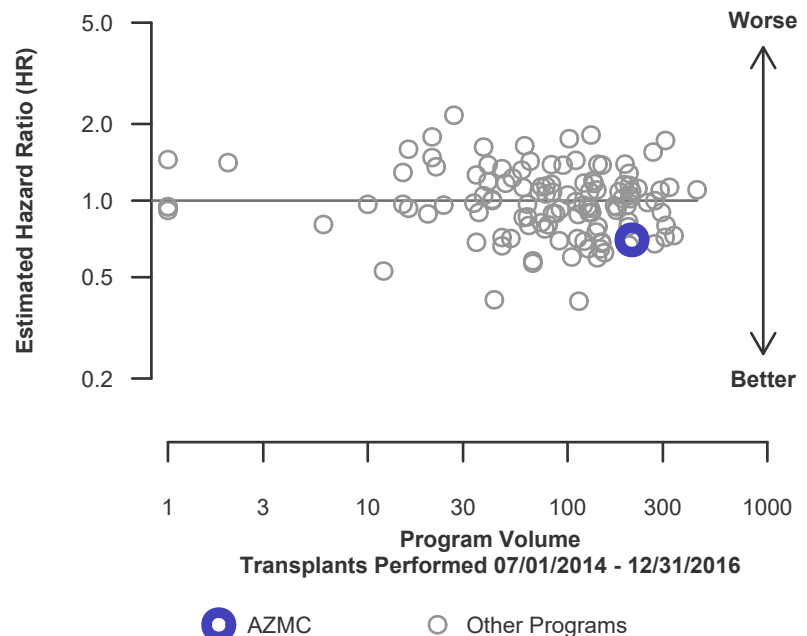


Figure C18D. Adult (18+) 3-year patient death HR program comparison (deceased donor grafts)





C. Transplant Information

Table C13L. Adult (18+) 3-year patient survival (living donor graft recipients)
Single organ transplants performed between 07/01/2014 and 12/31/2016
Retransplants excluded

	AZMC	U.S.
Number of transplants evaluated	9	682
Estimated probability of surviving at 3 years (unadjusted for patient and donor characteristics)	88.89%	89.00%
Expected probability of surviving at 3 years (adjusted for patient and donor characteristics)	89.01%	--
Number of observed deaths during the first 3 years after transplant	1	75
Number of expected deaths during the first 3 years after transplant	1.02	--
Estimated hazard ratio*	0.99	--
95% credible interval for the hazard ratio**	[0.20, 2.39]	--

* The hazard ratio provides an estimate of how Mayo Clinic Hospital (AZMC)'s results compare with what was expected based on modeling the transplant outcomes from all U.S. programs. A ratio above 1 indicates higher than expected patient death rates (e.g., a hazard ratio of 1.5 would indicate 50% higher risk), and a ratio below 1 indicates lower than expected patient death rates (e.g., a hazard ratio of 0.75 would indicate 25% lower risk). If AZMC's patient death rate were precisely the expected rate, the estimated hazard ratio would be 1.0.

** The 95% credible interval, [0.20, 2.39], indicates the location of AZMC's true hazard ratio with 95% probability. The best estimate is 1% lower risk of patient death compared to an average program, but AZMC's performance could plausibly range from 80% reduced risk up to 139% increased risk.

Figure C17L. Adult (18+) 3-year patient death HR estimate (living donor grafts)

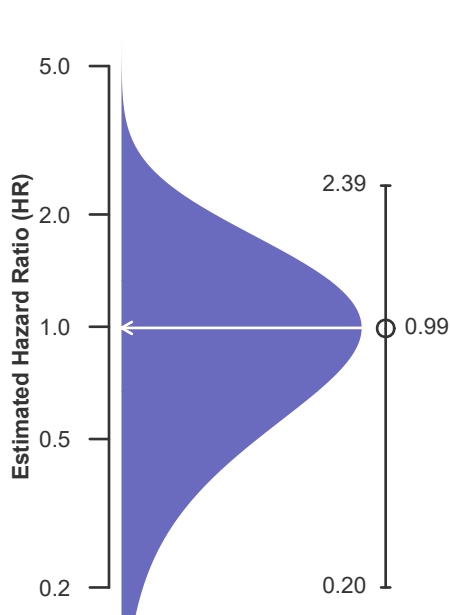
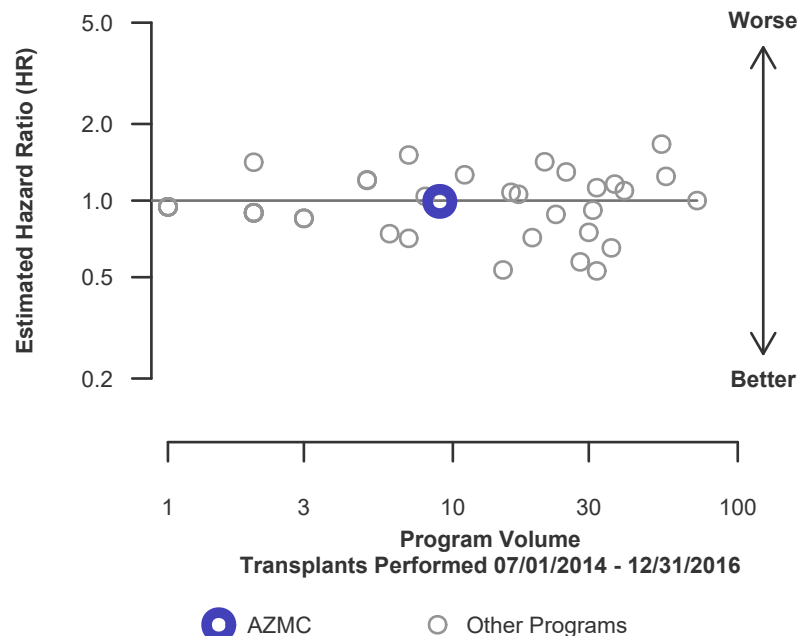


Figure C18L. Adult (18+) 3-year patient death HR program comparison (living donor grafts)





C. Transplant Information

Table C14. Pediatric (<18) 1-month patient survival

**Single organ transplants performed between 01/01/2017 and 06/30/2019
Retransplants excluded**

This center did not perform any
transplants relevant to
this table during
01/01/2017-06/30/2019

**Figure C19. Pediatric (<18)
1-month patient death HR
estimate**

This center did not perform any
transplants relevant to
this figure during
01/01/2017-06/30/2019

**Figure C20. Pediatric (<18) 1-month patient death HR program
comparison**

This center did not perform any
transplants relevant to
this figure during
01/01/2017-06/30/2019



C. Transplant Information

**Table C14D. Pediatric (<18) 1-month patient survival (deceased donor graft recipients)
Single organ transplants performed between 01/01/2017 and 06/30/2019
Retransplants excluded**

This center did not perform any
transplants relevant to
this table during
01/01/2017-06/30/2019

**Figure C19D. Pediatric (<18)
1-month patient death HR
estimate (deceased donor grafts)**

This center did not perform any
transplants relevant to
this figure during
01/01/2017-06/30/2019

**Figure C20D. Pediatric (<18) 1-month patient death HR
program comparison (deceased donor grafts)**

This center did not perform any
transplants relevant to
this figure during
01/01/2017-06/30/2019



C. Transplant Information

Table C14L. Pediatric (<18) 1-month patient survival (living donor graft recipients)
Single organ transplants performed between 01/01/2017 and 06/30/2019
Retransplants excluded

This center did not perform any
transplants relevant to
this table during
01/01/2017-06/30/2019

**Figure C19L. Pediatric (<18)
1-month patient death HR
estimate (living donor grafts)**

This center did not perform any
transplants relevant to
this figure during
01/01/2017-06/30/2019

**Figure C20L. Pediatric (<18) 1-month patient death HR
program comparison (living donor grafts)**

This center did not perform any
transplants relevant to
this figure during
01/01/2017-06/30/2019



C. Transplant Information

Table C15. Pediatric (<18) 1-year patient survival

Single organ transplants performed between 01/01/2017 and 06/30/2019

Retransplants excluded

This center did not perform any
transplants relevant to
this table during
01/01/2017-06/30/2019

Figure C21. Pediatric (<18) 1-year patient death HR estimate

This center did not perform any
transplants relevant to
this figure during
01/01/2017-06/30/2019

Figure C22. Pediatric (<18) 1-year patient death HR program comparison

This center did not perform any
transplants relevant to
this figure during
01/01/2017-06/30/2019



C. Transplant Information

Table C15D. Pediatric (<18) 1-year patient survival (deceased donor graft recipients)
Single organ transplants performed between 01/01/2017 and 06/30/2019
Retransplants excluded

This center did not perform any
transplants relevant to
this table during
01/01/2017-06/30/2019

**Figure C21D. Pediatric (<18)
1-year patient death HR estimate
(deceased donor grafts)**

This center did not perform any
transplants relevant to
this figure during
01/01/2017-06/30/2019

**Figure C22D. Pediatric (<18) 1-year patient death HR program
comparison (deceased donor grafts)**

This center did not perform any
transplants relevant to
this figure during
01/01/2017-06/30/2019



C. Transplant Information

Table C15L. Pediatric (<18) 1-year patient survival (living donor graft recipients)
Single organ transplants performed between 01/01/2017 and 06/30/2019
Retransplants excluded

This center did not perform any
transplants relevant to
this table during
01/01/2017-06/30/2019

**Figure C21L. Pediatric (<18)
1-year patient death HR estimate
(living donor grafts)**

This center did not perform any
transplants relevant to
this figure during
01/01/2017-06/30/2019

**Figure C22L. Pediatric (<18) 1-year patient death HR program
comparison (living donor grafts)**

This center did not perform any
transplants relevant to
this figure during
01/01/2017-06/30/2019



C. Transplant Information

Table C16. Pediatric (<18) 3-year patient survival

Single organ transplants performed between 07/01/2014 and 12/31/2016

Retransplants excluded

This center did not perform any
transplants relevant to
this table during
07/01/2014-12/31/2016

Figure C23. Pediatric (<18) 3-year patient death HR estimate

This center did not perform any
transplants relevant to
this figure during
07/01/2014-12/31/2016

Figure C24. Pediatric (<18) 3-year patient death HR program comparison

This center did not perform any
transplants relevant to
this figure during
07/01/2014-12/31/2016



C. Transplant Information

Table C16D. Pediatric (<18) 3-year patient survival (deceased donor graft recipients)
Single organ transplants performed between 07/01/2014 and 12/31/2016
Retransplants excluded

This center did not perform any
transplants relevant to
this table during
07/01/2014-12/31/2016

**Figure C23D. Pediatric (<18)
3-year patient death HR estimate
(deceased donor grafts)**

This center did not perform any
transplants relevant to
this figure during
07/01/2014-12/31/2016

**Figure C24D. Pediatric (<18) 3-year patient death HR program
comparison (deceased donor grafts)**

This center did not perform any
transplants relevant to
this figure during
07/01/2014-12/31/2016



C. Transplant Information

Table C16L. Pediatric (<18) 3-year patient survival (living donor graft recipients)
Single organ transplants performed between 07/01/2014 and 12/31/2016
Retransplants excluded

This center did not perform any
transplants relevant to
this table during
07/01/2014-12/31/2016

**Figure C23L. Pediatric (<18)
3-year patient death HR estimate
(living donor grafts)**

This center did not perform any
transplants relevant to
this figure during
07/01/2014-12/31/2016

**Figure C24L. Pediatric (<18) 3-year patient death HR program
comparison (living donor grafts)**

This center did not perform any
transplants relevant to
this figure during
07/01/2014-12/31/2016



C. Transplant Information

Table C17. Multi-organ transplant graft survival: 01/01/2017 - 06/30/2019

Adult (18+) Transplants

Transplant Type	First-Year Outcomes					
	Transplants Performed		Liver Graft Failures		Estimated Liver Graft Survival	
	AZMC-TX1	USA	AZMC-TX1	USA	AZMC-TX1	USA
Kidney-Liver	36	1,697	2	173	94.4%	89.3%

Pediatric (<18) Transplants

No pediatric (<18) multi-organ transplants were performed

Table C18. Multi-organ transplant patient survival: 01/01/2017 - 06/30/2019

Adult (18+) Transplants

Transplant Type	First-Year Outcomes					
	Transplants Performed		Patient Deaths		Estimated Patient Survival	
	AZMC-TX1	USA	AZMC-TX1	USA	AZMC-TX1	USA
Kidney-Liver	36	1,697	1	160	97.2%	90.1%

Pediatric (<18) Transplants

No pediatric (<18) multi-organ transplants were performed



D. Living Donor Information

Table D1. Living donor summary: 01/01/2017 - 12/31/2019

Living Donor Follow-Up	This Center			United States		
	01/2017-12/2017	01/2018-12/2018	01/2019-06/2019	01/2017-12/2017	01/2018-12/2018	01/2019-06/2019
Number of Living Donors	0	1	0	359	392	246
6-Month Follow-Up						
Donors due for follow-up	0	1	0	359	392	246
Timely clinical data	0 --%	1 100.0%	0 --%	306 85.2%	347 88.5%	214 87.0%
Timely lab data	0 --%	1 100.0%	0 --%	293 81.6%	344 87.8%	216 87.8%
12-Month Follow-Up						
Donors due for follow-up	0	1		359	392	
Timely clinical data	0 --%	1 100.0%		293 81.6%	324 82.7%	
Timely lab data	0 --%	1 100.0%		281 78.3%	316 80.6%	
24-Month Follow-Up						
Donors due for follow-up	0			358		
Timely clinical data	0 --%			249 69.6%		
Timely lab data	0 --%			223 62.3%		

Follow-up completion standards through 2 years post-donation were implemented in policy on February 1, 2013.