



User Guide

This report contains a wide range of useful information about the liver transplant program at Mayo Clinic Florida (FLSL). The report has three main sections:

- A. Program Summary
- B. Waiting List Information
- C. Transplant Information

The Program Summary is a one-page summary highlighting characteristics of the program, including the number of candidates on the waiting list, the number of transplants performed at the program, the number of patients being cared for by the program, and patient outcomes, including outcomes while on the waiting list (the transplant rate and the death rate while on the waiting list) and outcomes after transplant (patient and graft survival probabilities). If the program performed transplants in both adults and children, survival probabilities for adults and children (pediatrics) are provided separately. For each of the outcomes measures presented, a comparison is provided showing what would be expected at this program if it were performing as similar programs around the country perform when treating similar patients. As part of this comparison, we provide a measure of how certain we are that this program is performing as expected or significantly better or worse than expected. These statements of certainty are provided as footnotes to the figures, so please interpret the numbers in the figures carefully after considering the information in the footnotes. More details regarding these outcome measures are provided in Sections B and C of the report.

The Waiting List Information section contains more detailed information on how many candidates are on the waiting list at the program, the types of candidates on the waiting list, how long candidates typically have to wait for a transplant at this program, how frequently candidates successfully receive a transplant, and how often candidates on the waiting list die before receiving a transplant.

Table B1 shows the activity on this program's waiting list during two recent 1-year periods and provides comparisons to all programs within this program's OPTN region (see <http://optn.transplant.hrsa.gov/members/regions.asp> for information on OPTN regions) and the nation as a whole. Tables B2 and B3 describe the candidates on the waiting list at this program, with comparisons to candidates waiting in the same donor service area (OPO/DSA) the OPTN region, and the nation as a whole.

Table B4 shows how many candidates were removed from the waiting list because they received a transplant. The program's transplant rate is calculated as the number of candidates who received a transplant divided by the person-years observed at the program (person-years is a combination of how many candidates were on the waiting list along with how long each candidate was followed since some candidates are not on the waiting list for the entire year). The transplant rate and comparisons to what would be expected at this program are presented in Figures B1 and B2. Figure B1 shows the transplant rate compared to what was expected at this program. The expected transplant rate is an estimate of what we would expect at this program if it were performing transplants at rates similar to other programs in the US with similar candidates on their waiting lists. The expected rate is only an estimate, and is made with a certain level of uncertainty. This uncertainty is shown in Figure B2. Figure B2 displays the ratio of the observed to the expected transplant rate. A ratio of 1 indicates that the observed transplant rate was equal to the expected transplant rate, while a ratio less than 1 indicates the observed rate was lower than expected rate and a ratio greater than 1 indicates the observed rate



User Guide

was higher than the expected rate. However, the level of uncertainty must be considered when interpreting these numbers. The 95% confidence interval is also shown on Figure B2. This confidence interval provides a range within which the true ratio of observed to expected transplant rates is likely to be. If this confidence interval includes (crosses) 1.0, then we cannot say that this program's observed transplant rate is different from what would be expected. The observed transplant rate at this program was 168.8 per 100 person-years, and this was higher than would be expected with a 95% confidence interval of [1.85, 2.54] for the ratio of observed to expected transplant rates. Transplant rates are also provided for adult and pediatric patients separately along with comparisons to adult and pediatric rates in the DSA, the OPTN region, and the nation. Transplant rates are also presented excluding transplants from a living donor (Table B4D and Figures B1D-B3D). Please refer to the PSR Technical Methods documentation available at <http://www.srtr.org> for more detail regarding how expected rates are calculated.

The death rate (also known as the mortality rate) for candidates on the waiting list is presented in Table B5 and Figures B4-B6. These data are presented in the same way as the transplant rate data in the previous section. The intent of these tables and figures is to describe risk of death once candidates are listed rather than while they are listed. Therefore, time at risk and deaths after removal from the waiting list for reasons other than transplant, transfer to another transplant program, or recovery (no longer needing a transplant), and before any subsequent transplant, are included. As with transplant rates, mortality rates should be interpreted carefully taking into consideration the confidence interval displayed in Figure B5. For a complete description of how observed and expected mortality rates are calculated, please refer to the technical documentation available at <http://www.srtr.org>.

Table B6 presents information on what happens to candidates on the waiting list by three different time points after listing: 6 months, 12 months, and 18 months. The table displays percentages of candidates who have died, been removed from the waiting list, been transplanted, or been transferred or lost-to-follow-up. Tables B7 and B8 provide more detail regarding how many candidates have received a deceased donor transplant by certain time points during the first 3 years after being put on the transplant waiting list. Each row of Tables B7 and B8 presents the percent of candidates who received a deceased donor transplant by each time point. Table B9 presents data on the time it took for different percentages of patients to be transplanted for candidates added to the list between 01/01/2011 and 06/30/2016. The time it took for 5% (the 5th percentile) of patients to receive a transplant at this program was 0.2 months. If "Not Observed" is displayed in the table, then too few candidates received transplants before 12/31/2016 to calculate a particular percentile of transplant times.

The Transplant Information section begins with descriptions of transplant recipients in Tables C1 and C2. Data on recipients of deceased donor transplants are presented (Tables C1D and C2D); if applicable, data on recipients of living donor transplants are presented separately (Tables C1L and C2L). Comparisons to the region and the nation as a whole are provided. A description of the deceased donors used at this program is provided in Table C3D, along with characteristics of living donors in Table C3L, if applicable. Finally, information on the transplant procedure for deceased and living donor transplants is presented in Tables C4D and C4L, respectively.

Starting with Table C5, transplant outcomes are presented along with comparisons to what would be expected at this program and what happened in the nation as a whole. Tables C5-C10 present information on graft survival (survival of the transplanted organ), with data presented separately for



User Guide

adult and pediatric recipients. Patients are followed from the time of transplant until either failure of the transplanted organ or death, whichever comes first. Please refer to the technical methods for more information on these calculations (<http://www.srtr.org>).

While Tables C5-C10 present data on graft survival, Tables C11-C16 present information on patient survival. For these tables, patients are followed from the time of transplant until death, regardless of whether the transplant is functioning or the patient required another transplant to survive.

Tables C17 and C18 summarize the multiorgan transplant outcomes at this program. The summary statistics in these tables are descriptive and are not risk-adjusted for different donor and candidate characteristics.

Table D1 shows the rates of follow-up for living donors.

Additional information regarding the technical methods and the risk adjustment models used to estimate expected event rates is available on the SRTR website at <http://www.srtr.org>. We welcome and encourage feedback on these reports. Please feel free to share feedback with the SRTR at the following e-mail: srtr@srtr.org.



Table of Contents

Section	Page
User Guide	i
A. Program Summary	
Program Summary	1
B. Waiting List Information	
Waiting list activity	2
Demographic characteristics of waiting list candidates	3
Medical characteristics of waiting list candidates	4
Transplant rates	5
Deceased donor transplant rates	6
Waiting list mortality rates	7
Waiting list candidate status after listing	8
Medical urgency status 1 candidate status after listing	9
Percent of candidates with deceased donor transplants: demographic characteristics	10
Percent of candidates with deceased donor transplants: medical characteristics	11
Time to transplant for waiting list candidates	12
C. Transplant Information	
Deceased donor transplant recipient demographic characteristics	13
Living donor transplant recipient demographic characteristics	14
Deceased donor transplant recipient medical characteristics	15
Living donor transplant recipient medical characteristics	16
Deceased donor characteristics	17
Living donor characteristics	18
Deceased donor transplant characteristics	19
Living donor transplant characteristics	20
Graft survival	21
Patient survival	39
Multi-organ transplant graft survival	57
Multi-organ transplant patient survival	57
D. Living Donor Information	
Living donor follow-up summary	58



A. Program Summary

Figure A1. Waiting list and transplant activity

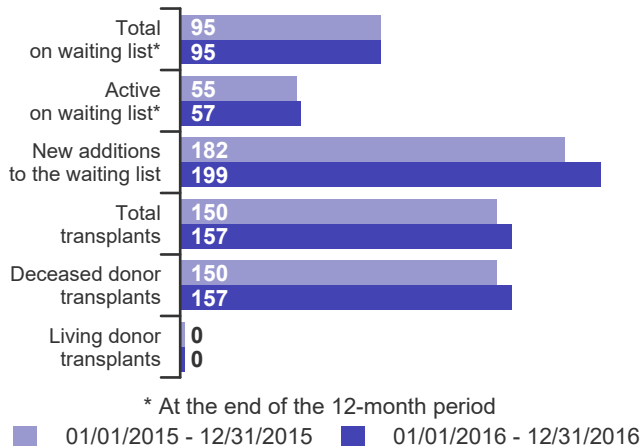
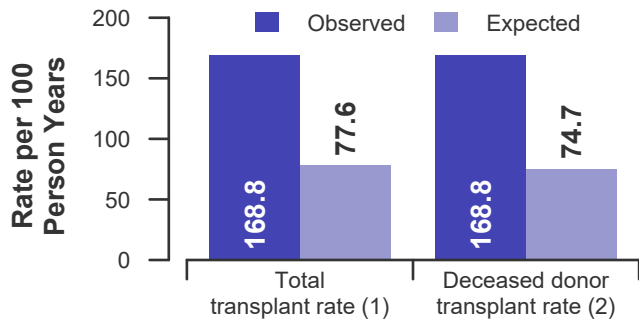


Table A1. Census of transplant recipients

Recipients	01/01/2015-12/31/2015	01/01/2016-12/31/2016
Transplanted at this center	150	157
Followed by this center*	1,213	1,259
...transplanted at this program	1,198	1,239
...transplanted elsewhere	15	20

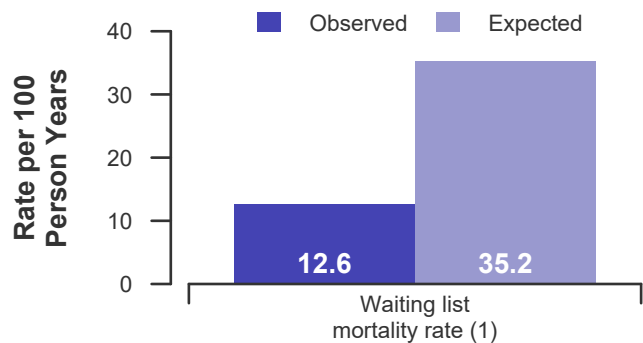
* Recipients followed are transplant recipients for whom the center has submitted a post-transplant follow-up form for a transplant that took place before the 12-month interval for each column.

Figure A2. Transplant rates 01/01/2016 - 12/31/2016



(1) Statistically higher ($p < 0.01$)
(2) Statistically higher ($p < 0.01$)

Figure A3. Waiting list mortality rates 01/01/2016 - 12/31/2016



(1) Statistically lower ($p < 0.01$)

Figure A4. First-year adult graft and patient survival: 01/01/2014 - 06/30/2016

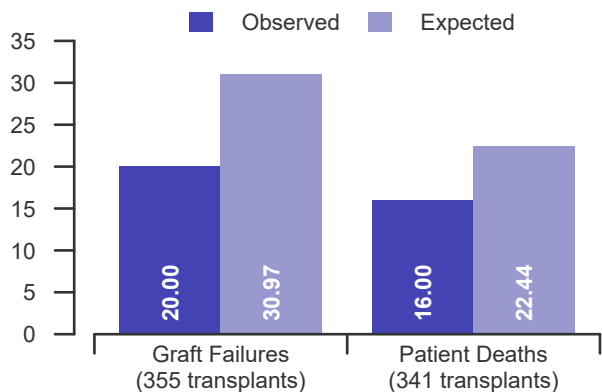


Figure A5. First-year pediatric graft and patient survival: 01/01/2014 - 06/30/2016

This center did not perform any transplants relevant to this figure during 01/01/2014-06/30/2016



B. Waiting List Information

Table B1. Waiting list activity summary: 01/01/2015 - 12/31/2016

Waiting List Registrations	Counts for this center		Activity for 01/01/2016 to 12/31/2016 as percent of registrants on waiting list on 01/01/2016		
	01/01/2015-12/31/2015	01/01/2016-12/31/2016	This Center (%)	OPTN Region (%)	U.S. (%)
On waiting list at start	104	95	100.0	100.0	100.0
Additions					
New listings at this center	182	199	209.5	150.6	84.1
Removals					
Transferred to another center	1	2	2.1	1.5	1.5
Received living donor transplant*	0	0	0.0	0.0	2.3
Received deceased donor transplant*	150	157	165.3	115.0	49.5
Died	5	5	5.3	9.2	8.1
Transplanted at another center	8	3	3.2	2.3	2.5
Deteriorated	8	18	18.9	10.1	9.4
Recovered	13	6	6.3	7.0	5.7
Other reasons	6	8	8.4	6.8	7.7
On waiting list at end of period	95	95	100.0	98.7	97.3

* These patients were removed from waiting list with removal code indicating transplant; this may not equal the number of transplants performed at this center during the specified period.



B. Waiting List Information

Table B2. Demographic characteristics of waiting list candidates
Candidates registered on the waiting list between 01/01/2016 and 12/31/2016

Demographic Characteristic	New Waiting List Registrations 01/01/2016 to 12/31/2016 (%)			All Waiting List Registrations on 12/31/2016 (%)		
	This Center (N=199)	OPTN Region (N=1,750)	U.S. (N=12,734)	This Center (N=95)	OPTN Region (N=1,147)	U.S. (N=14,723)
All (%)	100.0	100.0	100.0	100.0	100.0	100.0
Ethnicity/Race (%)*						
White	81.9	69.8	68.6	80.0	75.2	68.1
African-American	6.0	12.6	8.7	6.3	11.2	7.8
Hispanic/Latino	8.0	14.7	16.4	9.5	11.8	17.3
Asian	2.5	2.2	4.8	2.1	1.5	5.5
Other	1.5	0.6	1.5	2.1	0.3	1.3
Unknown	0.0	0.0	0.0	0.0	0.0	0.0
Age (%)						
<2 years	0.0	2.0	2.8	0.0	1.0	1.4
2-11 years	0.0	2.4	2.1	0.0	1.2	1.3
12-17 years	0.0	0.9	1.2	0.0	0.9	1.2
18-34 years	4.0	5.8	5.7	4.2	5.4	5.8
35-49 years	15.1	15.4	16.0	17.9	16.7	19.1
50-64 years	56.3	54.4	53.3	57.9	57.2	56.9
65+ years	24.6	19.1	18.9	20.0	17.7	14.3
Other (includes prenatal)	0.0	0.0	0.0	0.0	0.0	0.0
Gender (%)						
Male	65.3	62.1	62.9	64.2	59.5	61.6
Female	34.7	37.9	37.1	35.8	40.5	38.4

* Race and ethnicity are reported together as a single data element, reflecting their data collection (either race or ethnicity is required, but not both). Patients formerly coded as white and Hispanic are coded as Hispanic. Race and ethnicity sum to 100%.



B. Waiting List Information

Table B3. Medical characteristics of waiting list candidates

Candidates registered on the waiting list between 01/01/2016 and 12/31/2016

Medical Characteristic	New Waiting List Registrations 01/01/2016 to 12/31/2016 (%)			All Waiting List Registrations on 12/31/2016 (%)		
	This Center	OPTN Region	U.S.	This Center	OPTN Region	U.S.
	(N=199)	(N=1,750)	(N=12,734)	(N=95)	(N=1,147)	(N=14,723)
All (%)	100.0	100.0	100.0	100.0	100.0	100.0
Blood Type (%)						
O	54.8	49.8	46.8	57.9	51.5	48.2
A	32.2	35.8	36.4	31.6	39.1	37.8
B	9.5	11.1	12.7	7.4	7.3	11.4
AB	3.5	3.3	4.1	3.2	2.0	2.5
Unknown	0.0	0.0	0.0	0.0	0.0	0.0
Previous Transplant (%)						
Yes	5.0	6.2	5.0	10.5	7.0	3.6
No	95.0	93.8	95.0	89.5	93.0	96.4
Unknown	0.0	0.0	0.0	0.0	0.0	0.0
Primary Disease (%)						
Acute Hepatic Necrosis	2.0	3.4	3.8	1.1	1.0	1.9
Non-Cholestatic Cirrhosis	79.4	67.9	67.0	75.8	72.5	72.6
Cholestatic Liver Disease/Cirrhosis	10.1	8.0	7.8	10.5	8.2	8.1
Biliary Atresia	0.5	2.0	2.3	0.0	1.3	1.6
Metabolic Diseases	4.0	1.9	2.5	3.2	1.5	1.7
Malignant Neoplasms	1.0	11.3	11.3	2.1	9.3	8.4
Other	3.0	5.5	5.3	7.4	6.1	5.6
Missing	0.0	0.0	0.0	0.0	0.0	0.0
Medical Urgency Status/MELD/PELD at Listing (%)*						
Status 1A	1.0	2.4	2.9	0.0	0.0	0.3
Status 1B	0.0	0.4	0.5	0.0	0.2	0.1
Status 2A	0.0	0.0	0.0	0.0	0.0	0.0
Status 2B	0.0	0.0	0.0	0.0	0.0	0.1
Status 3	0.0	0.0	0.0	0.0	0.0	1.2
MELD 6-10	19.1	16.7	20.0	18.9	24.2	30.1
MELD 11-14	12.6	16.0	18.5	16.8	31.0	30.0
MELD 15-20	24.6	26.9	23.1	26.3	29.3	23.6
MELD 21-30	16.6	21.7	17.2	20.0	10.4	7.9
MELD 31-40	13.6	10.1	10.8	0.0	0.3	0.7
PELD less than or equal to 10	0.0	1.4	2.1	0.0	1.2	1.8
PELD 11-14	0.0	0.2	0.3	0.0	0.0	0.2
PELD 15-20	0.0	0.6	0.5	0.0	0.3	0.3
PELD 21-30	0.0	0.6	0.5	0.0	0.3	0.2
PELD 31 or greater	0.0	0.6	0.3	0.0	0.0	0.0
Temporarily Inactive	12.6	2.6	3.3	17.9	2.8	3.7

* MELD/PELD score based on laboratory measures is shown for listings beginning 2/27/2002 unless patient is Status 1 or Temporarily Inactive. MELD/PELD scores based on exception rules are not used. Status 1 separated into 1A and 1B in August 2005.



B. Waiting List Information

Table B4. Transplant rates: 01/01/2016 - 12/31/2016

Waiting List Registrations	This Center	OPO/DSA	Region	U.S.
All Candidates				
Count on waiting list at start*	95	207	1,161	15,107
Person Years**	93.0	193.8	1,126.1	14,405.0
Removals for Transplant	157	187	1,336	7,841
Adult (18+) Candidates				
Count on waiting list at start*	95	197	1,129	14,636
Person Years**	93.0	191.2	1,098.7	13,925.1
Removals for transplant	157	187	1,267	7,258
Pediatric (<18) Candidates				
Count on waiting list at start*	--	--	--	--
Person Years**	--	--	--	--
Removals for transplant	--	--	--	--

* Counts in this table may be lower than similar counts in other waiting list tables, such as Table B1. A small percentage (~1%) of patients are found to have died or been transplanted before being removed from the waiting list, so these patients are excluded if the event occurs prior to the start of the study period. Inactive time on the waiting list is included in the calculations for this table.

** Person years are calculated as days (converted to fractional years). The number of days from January 1 or from the date of first wait listing until death, transplant, removal from the waiting list or December 31.

Figure B1. Observed and expected transplant rates: 01/01/2016 - 12/31/2016

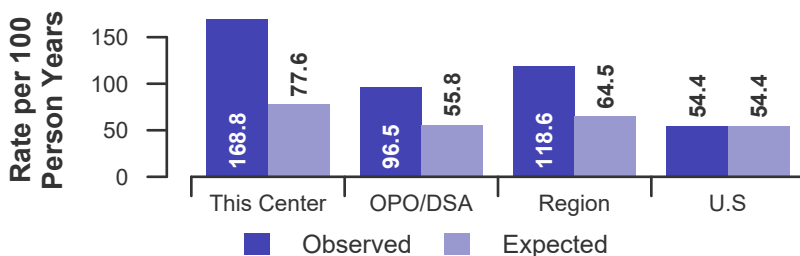


Figure B2. Ratio of observed to expected transplant rates

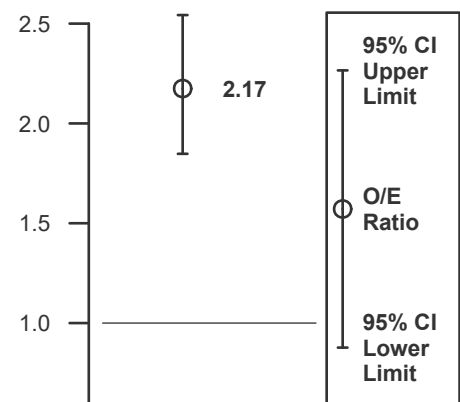
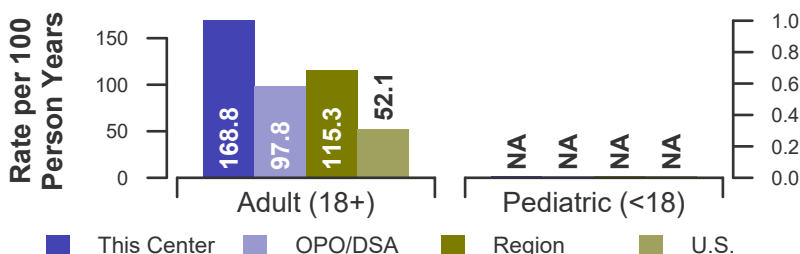


Figure B3. Observed adult (18+) and pediatric (<18) transplant rates: 01/01/2016 - 12/31/2016



(1) Higher than expected (p<0.01, 95% CI=[1.85, 2.54])



B. Waiting List Information

Table B4D. Deceased donor transplant rates: 01/01/2016 - 12/31/2016

Waiting List Registrations	This Center	OPO/DSA	Region	U.S.
All Candidates				
Count on waiting list at start*	95	207	1,161	15,107
Person Years**	93.0	193.8	1,126.1	14,405.0
Removals for Transplant	157	187	1,336	7,496
Adult (18+) Candidates				
Count on waiting list at start*	95	197	1,129	14,636
Person Years**	93.0	191.2	1,098.7	13,925.1
Removals for transplant	157	187	1,267	6,976
Pediatric (<18) Candidates				
Count on waiting list at start*	--	--	--	--
Person Years**	--	--	--	--
Removals for transplant	--	--	--	--

* Counts in this table may be lower than similar counts in other waiting list tables, such as Table B1. A small percentage (~1%) of patients are found to have died or been transplanted before being removed from the waiting list, so these patients are excluded if the event occurs prior to the start of the study period. Inactive time on the waiting list is included in the calculations for this table.

** Person years are calculated as days (converted to fractional years). The number of days from January 1 or from the date of first wait listing until death, transplant, removal from the waiting list or December 31.

Figure B1D. Observed and expected deceased donor transplant rates: 01/01/2016 - 12/31/2016

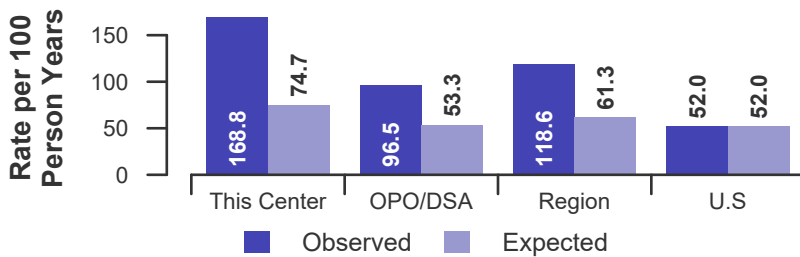


Figure B2D. Ratio of observed to expected deceased donor transplant rates

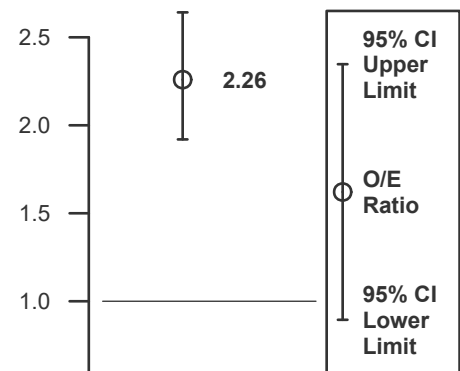
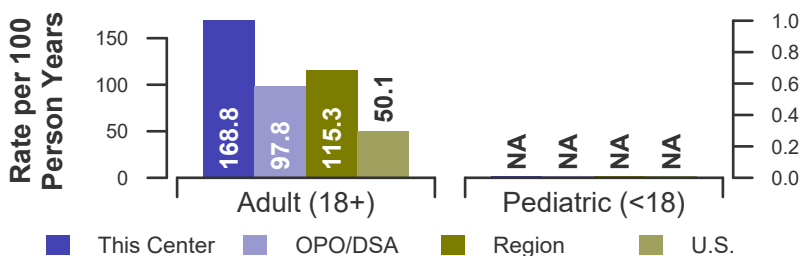


Figure B3D. Observed adult (18+) and pediatric (<18) deceased donor transplant rates: 01/01/2016 - 12/31/2016



(1) Higher than expected
($p < 0.01$, 95% CI = [1.92, 2.64])



B. Waiting List Information

Table B5. Waiting list mortality rates: 01/01/2016 - 12/31/2016

Waiting List Registrations	This Center	OPO/DSA	Region	U.S.
All Candidates				
Count on waiting list at start*	95	207	1,161	15,107
Person Years**	103.1	210.8	1,193.5	15,344.9
Number of deaths	13	34	192	2,330
Adult (18+) Candidates				
Count on waiting list at start*	95	197	1,129	14,636
Person Years**	103.1	207.4	1,164.4	14,844.6
Number of deaths	13	34	186	2,290
Pediatric (<18) Candidates				
Count on waiting list at start*	--	--	--	--
Person Years**	--	--	--	--
Number of deaths	--	--	--	--

* Counts in this table may be lower than similar counts in other waiting list tables, such as Table B1. A small percentage (~1%) of patients are found to have died or been transplanted before being removed from the waiting list, so these patients are excluded if the event occurs prior to the start of the study period. Inactive time on the waiting list is included in the calculations for this table.

** Person years are calculated as days (converted to fractional years). The number of days from January 1 or from the date of first wait listing until death, transplant, 60 days after recovery, transfer or December 31.

Figure B4. Observed and expected waiting list mortality rates: 01/01/2016 - 12/31/2016

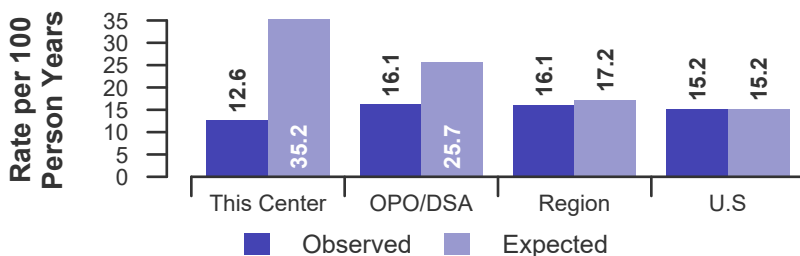


Figure B5. Ratio of observed to expected waiting list mortality rates

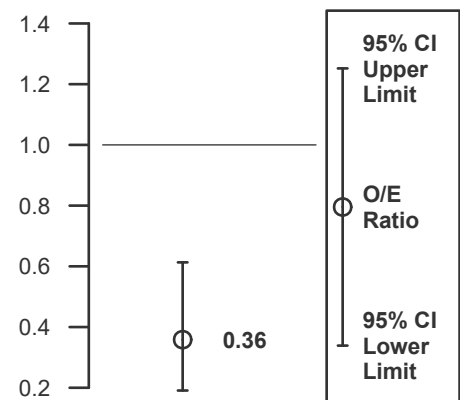
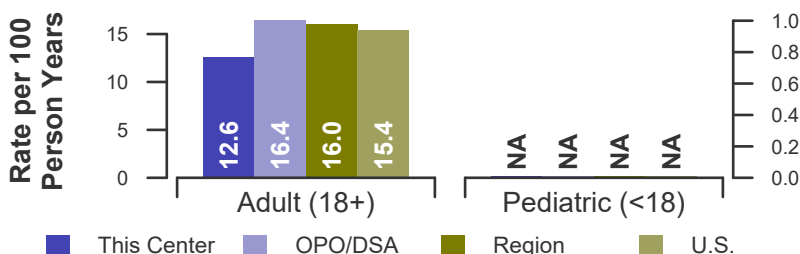


Figure B6. Observed adult (18+) and pediatric (<18) waiting list mortality rates: 01/01/2016 - 12/31/2016



(1) Lower than expected
(p<0.01, 95% CI=[0.19, 0.61])



B. Waiting List Information

Table B6. Waiting list candidate status after listing
Candidates registered on waiting list between 07/01/2014 and 06/30/2015

Waiting list status (survival status)	This Center (N=195)			U.S. (N=11,964)		
	Months Since Listing			Months Since Listing		
	6	12	18	6	12	18
Alive on waiting list (%)	29.7	11.3	6.2	47.1	31.5	22.0
Died on the waiting list without transplant (%)	1.5	2.6	2.6	5.5	7.2	8.0
Removed without transplant (%):						
Condition worsened (status unknown)	4.6	6.7	7.2	6.0	8.1	9.3
Condition improved (status unknown)	0.0	1.5	2.1	1.1	1.6	2.3
Refused transplant (status unknown)	0.0	0.0	0.0	0.2	0.4	0.5
Other	2.1	2.6	3.1	1.6	2.6	3.7
Transplant (living donor from waiting list only) (%):						
Functioning (alive)	0.0	0.0	0.0	1.5	1.9	1.3
Failed-Retransplanted (alive)	0.0	0.0	0.0	0.0	0.1	0.1
Failed-alive not retransplanted	0.0	0.0	0.0	0.0	0.0	0.0
Died	0.0	0.0	0.0	0.1	0.1	0.2
Status Yet Unknown**	0.0	0.0	0.0	0.0	0.1	0.9
Transplant (deceased donor) (%):						
Functioning (alive)	50.3	56.9	39.0	32.7	38.0	29.6
Failed-Retransplanted (alive)	1.0	1.0	1.0	0.4	0.6	0.7
Failed-alive not retransplanted	0.5	0.0	0.0	0.1	0.0	0.0
Died	1.5	2.1	2.1	1.8	2.8	3.8
Status Yet Unknown*	8.7	15.4	36.4	1.4	4.1	16.6
Lost or Transferred (status unknown) (%)	0.0	0.0	0.5	0.4	0.8	1.0
TOTAL (%)	100.0	100.0	100.0	100.0	100.0	100.0
Total % known died on waiting list or after transplant	3.1	4.6	4.6	7.4	10.1	12.0
Total % known died or removed as unstable	7.7	11.3	11.8	13.4	18.2	21.3
Total % removed for transplant	62.1	75.4	78.5	38.1	47.8	53.2
Total % with known functioning transplant (alive)	50.3	56.9	39.0	34.2	39.9	30.9

* Follow-up form covering specified time period not yet completed, and possibly has not become due.



B. Waiting List Information

Table B6S1. Medical urgency status 1 candidate status after listing
Candidates registered on the waiting list between 07/01/2014 and 06/30/2015

Waiting list status (survival status)	This Center (N=1)			U.S. (N=466)		
	Months Since listing			Months Since listing		
	6	12	18	6	12	18
Alive on waiting list (%)	0.0	0.0	0.0	1.5	1.1	1.1
Died on the waiting list without transplant (%)	0.0	0.0	0.0	7.7	7.7	7.7
Removed without transplant (%):						
Condition worsened (status unknown)	0.0	0.0	0.0	12.0	12.0	12.0
Condition improved (status unknown)	0.0	0.0	0.0	15.0	15.2	15.2
Refused transplant (status unknown)	0.0	0.0	0.0	0.0	0.0	0.0
Other	0.0	0.0	0.0	1.1	1.1	1.1
Transplant (living donor from waiting list only) (%):						
Functioning (alive)	0.0	0.0	0.0	0.9	0.6	0.6
Failed-Retransplanted (alive)	0.0	0.0	0.0	0.2	0.2	0.2
Failed-alive not retransplanted	0.0	0.0	0.0	0.0	0.0	0.0
Died	0.0	0.0	0.0	0.0	0.0	0.0
Status Yet Unknown**	0.0	0.0	0.0	0.0	0.2	0.2
Transplant (deceased donor) (%):						
Functioning (alive)	100.0	100.0	100.0	52.8	47.4	36.5
Failed-Retransplanted (alive)	0.0	0.0	0.0	0.9	1.3	1.5
Failed-alive not retransplanted	0.0	0.0	0.0	0.2	0.2	0.0
Died	0.0	0.0	0.0	6.7	7.9	8.8
Status Yet Unknown*	0.0	0.0	0.0	0.9	4.7	14.8
Lost or Transferred (status unknown) (%)	0.0	0.0	0.0	0.2	0.2	0.2
TOTAL (%)	100.0	100.0	100.0	100.0	100.0	100.0
Total % known died on waiting list or after transplant	0.0	0.0	0.0	14.4	15.7	16.5
Total % known died or removed as unstable	0.0	0.0	0.0	26.4	27.7	28.5
Total % removed for transplant	100.0	100.0	100.0	62.4	62.7	62.7
Total % with known functioning transplant (alive)	100.0	100.0	100.0	53.6	48.1	37.1

* Follow-up form covering specified time period not yet completed, and possibly has not become due.



B. Waiting List Information

Table B7. Percent of candidates with deceased donor transplants: demographic characteristics
Candidates registered on the waiting list between 01/01/2011 and 12/31/2013

Characteristic	N	Percent transplanted at time periods since listing								
		This Center				United States				
		30 day	1 year	2 years	3 years	N	30 day	1 year	2 years	3 years
All	619	21.3	74.5	77.4	78.7	34,830	16.2	42.1	49.1	51.0
Ethnicity/Race*										
White	490	21.2	73.5	75.9	76.9	24,062	15.7	42.2	48.9	50.8
African-American	51	27.5	76.5	82.4	88.2	3,371	22.2	50.0	56.3	58.2
Hispanic/Latino	55	18.2	81.8	87.3	87.3	5,367	15.4	37.3	45.2	47.2
Asian	18	16.7	83.3	83.3	83.3	1,617	14.1	40.1	50.2	52.0
Other	5	20.0	40.0	40.0	40.0	413	16.5	41.4	48.4	49.6
Unknown	0	--	--	--	--	0	--	--	--	--
Age										
<2 years	0	--	--	--	--	887	28.0	70.6	74.1	75.0
2-11 years	0	--	--	--	--	685	31.5	66.7	71.5	73.3
12-17 years	0	--	--	--	--	426	22.5	51.6	59.2	62.0
18-34 years	21	14.3	71.4	76.2	81.0	1,751	23.5	42.7	48.4	51.0
35-49 years	90	24.4	67.8	70.0	74.4	5,736	20.6	42.8	48.5	50.4
50-64 years	347	21.3	74.4	77.5	78.4	20,642	14.1	40.2	47.8	49.8
65+ years	161	20.5	78.9	81.4	81.4	4,703	12.6	39.7	47.0	48.2
Other (includes prenatal)	0	--	--	--	--	0	--	--	--	--
Gender										
Male	392	21.7	77.0	79.1	79.6	22,336	15.6	43.0	50.5	52.4
Female	227	20.7	70.0	74.4	77.1	12,494	17.3	40.5	46.5	48.5

* Race and ethnicity are reported together as a single data element, reflecting their data collection (either race or ethnicity is required, but not both). Patients formerly coded as white and Hispanic are coded as Hispanic. Race and ethnicity sum to 100%.



B. Waiting List Information

Table B8. Percent of candidates with deceased donor transplants: medical characteristics
Candidates registered on the waiting list between 01/01/2011 and 12/31/2013

Characteristic	N	Percent transplanted at time periods since listing								
		This Center				United States				
		30 day	1 year	2 years	3 years	N	30 day	1 year	2 years	3 years
All	619	21.3	74.5	77.4	78.7	34,830	16.2	42.1	49.1	51.0
Blood Type										
O	292	21.2	71.9	75.3	76.7	16,165	15.7	39.5	47.0	49.1
A	241	17.0	71.4	73.9	75.1	13,083	14.8	40.7	47.7	49.5
B	65	32.3	89.2	92.3	93.8	4,229	19.0	49.6	55.7	57.6
AB	21	38.1	100.0	100.0	100.0	1,353	27.6	62.8	67.4	68.4
Previous Transplant										
Yes	41	34.1	56.1	65.9	65.9	2,095	27.4	47.9	51.4	52.8
No	578	20.4	75.8	78.2	79.6	32,735	15.5	41.7	48.9	50.9
Primary Disease										
Acute Hepatic Necrosis	24	29.2	91.7	95.8	95.8	1,548	43.0	51.7	53.9	54.5
Non-Cholestatic Cirrhosis	439	20.3	75.2	77.0	77.9	23,314	14.9	38.8	45.7	47.7
Cholestatic Liver Disease/Cirrhosis	49	18.4	65.3	75.5	79.6	2,394	14.0	40.9	47.6	50.9
Biliary Atresia	0	--	--	--	--	689	19.0	65.3	71.3	73.0
Metabolic Diseases	12	33.3	75.0	75.0	75.0	809	22.9	61.9	68.0	70.1
Malignant Neoplasms	7	0.0	57.1	57.1	57.1	3,923	9.8	47.9	59.0	59.9
Other	88	26.1	72.7	77.3	79.5	2,149	22.0	46.6	52.2	54.3
Missing	0	--	--	--	--	4	0.0	25.0	25.0	25.0
Medical Urgency Status/MELD/PELD at Listing*										
Status 1	0	--	--	--	--	0	--	--	--	--
Status 1A	7	85.7	85.7	85.7	85.7	1,283	58.6	59.0	59.0	59.0
Status 1B	0	--	--	--	--	105	62.9	80.0	80.0	80.0
Status 2A	0	--	--	--	--	0	--	--	--	--
Status 2B	0	--	--	--	--	0	--	--	--	--
Status 3	0	--	--	--	--	0	--	--	--	--
MELD 6-10	119	7.6	70.6	72.3	73.1	6,675	3.6	33.7	45.9	48.0
MELD 11-14	99	8.1	76.8	79.8	81.8	7,137	3.5	26.8	36.4	39.8
MELD 15-20	172	7.6	66.9	72.7	75.6	8,203	7.0	38.0	45.3	47.7
MELD 21-30	159	37.1	81.8	83.6	83.6	5,690	27.1	56.8	59.3	60.0
MELD 31-40	49	75.5	79.6	79.6	79.6	3,176	59.9	66.9	67.1	67.1
PELD less than or equal to 10	0	--	--	--	--	668	13.2	66.6	73.7	75.7
PELD 11-14	0	--	--	--	--	117	17.9	70.9	75.2	76.1
PELD 15-20	0	--	--	--	--	194	20.1	75.8	79.9	82.0
PELD 21-30	0	--	--	--	--	136	33.8	71.3	71.3	71.3
PELD 31 or greater	0	--	--	--	--	65	52.3	73.8	76.9	76.9
Temporarily Inactive	14	0.0	78.6	78.6	78.6	1,381	7.2	26.5	35.7	37.6

* MELD/PELD score based on laboratory measures is shown for listings beginning 2/27/2002 unless patient is Status 1 or Temporarily Inactive. MELD/PELD scores based on exception rules are not used. Status 1 separated into 1A and 1B in August 2005.



B. Waiting List Information

Table B9. Time to transplant for waiting list candidates*

Candidates registered on the waiting list between 01/01/2011 and 06/30/2016

Percentile	Center	Months to Transplant**		U.S.
		OPO/DSA	Region	
5th	0.2	0.2	0.1	0.2
10th	0.3	0.3	0.2	0.4
25th	1.2	1.4	0.8	2.3
50th (median time to transplant)	4.1	5.4	4.0	14.4
75th	9.5	Not Observed	Not Observed	Not Observed

* If cells contain "Not Observed" fewer than that percentile of patients had received a transplant. For example, the 50th percentile of time to transplant is the time when 50% of candidates have received transplants. If waiting times are long, then the 50th percentile may not be observed during the follow-up period for this table. Also, if more than 50% of candidates are removed from the list due to death or other reasons before receiving transplants, then the 50th percentile of time to transplant will not be observed.

** Censored on 12/31/2016. Calculated as the months after listing, during which the corresponding percent of all patients initially listed had received a transplant.



C. Transplant Information

Table C1D. Deceased donor transplant recipient demographic characteristics
Patients transplanted between 01/01/2016 and 12/31/2016

Characteristic	Percentage in each category		
	Center (N=157)	Region (N=1,336)	U.S. (N=7,496)
Ethnicity/Race (%)*			
White	84.1	70.1	68.9
African-American	4.5	13.5	9.7
Hispanic/Latino	7.0	13.7	15.3
Asian	3.8	2.2	4.7
Other	0.6	0.4	1.4
Unknown	0.0	0.0	0.0
Age (%)			
<2 years	0.0	2.1	2.7
2-11 years	0.0	2.2	2.9
12-17	0.0	0.9	1.3
18-34	5.1	5.8	5.6
35-49 years	12.1	16.2	15.7
50-64 years	54.8	53.0	53.1
65+ years	28.0	19.8	18.7
Unknown	0.0	0.0	0.0
Gender (%)			
Male	67.5	62.7	65.0
Female	32.5	37.3	35.0

* Race and ethnicity are reported together as a single data element, reflecting their data collection (either race or ethnicity is required, but not both). Patients formerly coded as white and Hispanic are coded as Hispanic. Race and ethnicity sum to 100%.



C. Transplant Information

Table C1L. Living donor transplant recipient demographic characteristics
Patients transplanted between 01/01/2016 and 12/31/2016

**This center did not perform any
transplants relevant to
this table during
01/01/2016-12/31/2016**



C. Transplant Information

Table C2D. Deceased donor transplant recipient medical characteristics
Patients transplanted between 01/01/2016 and 12/31/2016

Characteristic	Percentage in each category		
	Center (N=157)	Region (N=1,336)	U.S. (N=7,496)
Blood Type (%)			
O	48.4	47.5	44.9
A	38.2	36.1	36.2
B	10.2	12.9	14.2
AB	3.2	3.5	4.6
Previous Transplant (%)			
Yes	4.5	4.8	5.4
No	95.5	95.2	94.6
Body Mass Index (%)			
0-20	4.5	11.7	12.7
21-25	31.8	29.3	26.6
26-30	31.2	28.9	29.5
31+	32.5	29.5	30.2
Unknown	0.0	0.7	1.0
Primary Disease (%)			
Acute Hepatic Necrosis	5.1	4.5	4.0
Non-Cholestatic Cirrhosis	62.4	65.3	63.4
Cholestatic Liver Disease/Cirrhosis	6.4	8.8	8.2
Biliary Atresia	1.3	2.1	2.6
Metabolic Diseases	5.7	2.5	3.4
Malignant Neoplasms	17.2	13.5	14.8
Other	1.9	3.2	3.6
Missing	0.0	0.0	0.0
Medical Urgency Statust/MELD/PELD at Transplant (%)*			
Status 1A	1.9	2.8	3.5
Status 1B	0.0	0.7	1.7
MELD 6-10	20.4	11.4	13.4
MELD 11-14	13.4	12.6	11.4
MELD 15-20	27.4	26.3	20.6
MELD 21-30	18.5	25.7	23.4
MELD 31-40	18.5	17.6	22.6
PELD less than or equal to 10	0.0	0.8	1.5
PELD 11-14	0.0	0.4	0.4
PELD 15-20	0.0	0.4	0.5
PELD 21-30	0.0	0.7	0.5
PELD 31 or greater	0.0	0.4	0.4
Temporarily Inactive	0.0	0.0	0.0
Recipient Medical Condition at Transplant (%)			
Not Hospitalized	74.5	68.8	64.8
Hospitalized	14.0	18.2	19.6
ICU	11.5	12.9	15.3
Unknown	0.0	0.1	0.3

* MELD/PELD score based on laboratory measures at the time of transplant is shown unless recipient is Status 1 or Temporarily Inactive. MELD/PELD scores based on exception rules are not used. Status 1 separated into 1A and 1B in August 2005



C. Transplant Information

**Table C2L. Living donor transplant recipient medical characteristics
Patients transplanted between 01/01/2016 and 12/31/2016**

**This center did not perform any
transplants relevant to
this table during
01/01/2016-12/31/2016**



C. Transplant Information

Table C3D. Deceased donor characteristics
Transplants performed between 01/01/2016 and 12/31/2016

Donor Characteristic	Percentage in each category		
	Center (N=157)	Region (N=1,336)	U.S. (N=7,496)
Cause of Death (%)			
Deceased: Stroke	38.9	33.5	30.1
Deceased: MVA	10.8	15.5	13.9
Deceased: Other	50.3	51.0	56.0
Ethnicity/Race (%)*			
White	67.5	59.9	65.2
African-American	22.3	30.5	18.8
Hispanic/Latino	10.2	9.1	12.6
Asian	0.0	0.6	2.7
Other	0.0	0.0	0.7
Not Reported	0.0	0.0	0.0
Age (%)			
<2 years	0.0	1.9	1.7
2-11 years	1.3	2.5	2.9
12-17	4.5	4.6	5.3
18-34	22.9	30.9	34.5
35-49 years	27.4	25.6	25.3
50-64 years	33.8	28.0	23.9
65+ years	10.2	6.4	6.5
Unknown	0.0	0.0	0.0
Gender (%)			
Male	63.7	58.3	59.8
Female	36.3	41.7	40.2
Blood Type (%)			
O	51.6	50.8	49.0
A	36.3	36.2	36.9
B	10.2	11.2	11.5
AB	1.9	1.7	2.6
Unknown	0.0	0.0	0.0

* Race and ethnicity are reported together as a single data element, reflecting their data collection (either race or ethnicity is required, but not both). Patients formerly coded as white and Hispanic are coded as Hispanic. Race and ethnicity sum to 100%.



C. Transplant Information

Table C3L. Living donor characteristics

Transplants performed between 01/01/2016 and 12/31/2016

This center did not perform any
transplants relevant to
this table during
01/01/2016-12/31/2016



C. Transplant Information

Table C4D. Deceased donor transplant characteristics
Transplants performed between 01/01/2016 and 12/31/2016

Transplant Characteristic	Percentage in each category		
	Center (N=157)	Region (N=1,336)	U.S. (N=7,496)
Cold Ischemic Time (Hours): Local (%)			
Deceased: 0-5 hr	76.9	69.6	60.4
Deceased: 6-10 hr	23.1	29.0	37.0
Deceased: 11-15 hr	0.0	0.6	1.6
Deceased: 16-20 hr	0.0	0.1	0.1
Deceased: 21+ hr	0.0	0.0	0.1
Not Reported	0.0	0.6	0.8
Cold Ischemic Time (Hours): Shared (%)			
Deceased: 0-5 hr	56.5	39.7	36.3
Deceased: 6-10 hr	43.5	57.7	58.5
Deceased: 11-15 hr	0.0	1.5	4.2
Deceased: 16-20 hr	0.0	0.2	0.3
Deceased: 21+ hr	0.0	0.2	0.2
Not Reported	0.0	0.7	0.6
Procedure Type (%)			
Liver alone	92.4	89.5	89.0
Liver and another organ	7.6	10.5	11.0
Sharing (%)			
Local	41.4	59.7	63.0
Shared	58.6	40.3	37.0
Median Time in Hospital After Transplant*	6.5 Days	9.0 Days	10.0 Days

* Multiple organ transplants are excluded from this statistic.



C. Transplant Information

Table C4L. Living donor transplant characteristics

Transplants performed between 01/01/2016 and 12/31/2016

This center did not perform any
transplants relevant to
this table during
01/01/2016-12/31/2016



C. Transplant Information

Table C5. Adult (18+) 1-month survival with a functioning graft
Single organ transplants performed between 01/01/2014 and 06/30/2016
Deaths and retransplants are considered graft failures

	FLSL	U.S.
Number of transplants evaluated	355	14,645
Estimated probability of surviving with a functioning graft at 1 month (unadjusted for patient and donor characteristics)	98.59%	96.03%
Expected probability of surviving with a functioning graft at 1 month (adjusted for patient and donor characteristics)	96.56%	--
Number of observed graft failures (including deaths) during the first month after transplant	5	582
Number of expected graft failures (including deaths) during the first month after transplant	12.40	582
Estimated hazard ratio*	0.49	1.00
95% credible interval for the hazard ratio**	[0.20, 0.91]	--

* The hazard ratio provides an estimate of how Mayo Clinic Florida (FLSL)'s results compare with what was expected based on modeling the transplant outcomes from all U.S. programs. A ratio above 1 indicates higher than expected graft failure rates (e.g., a hazard ratio of 1.5 would indicate 50% higher risk), and a ratio below 1 indicates lower than expected graft failure rates (e.g., a hazard ratio of 0.75 would indicate 25% lower risk). If FLSL's graft failure rate were precisely the expected rate, the estimated hazard ratio would be 1.0.

** The 95% credible interval, [0.20, 0.91], indicates the location of FLSL's true hazard ratio with 95% probability. The best estimate is 51% lower risk of graft failure compared to an average program, but FLSL's performance could plausibly range from 80% reduced risk up to 9% reduced risk.

Figure C1. Adult (18+) 1-month graft failure HR estimate

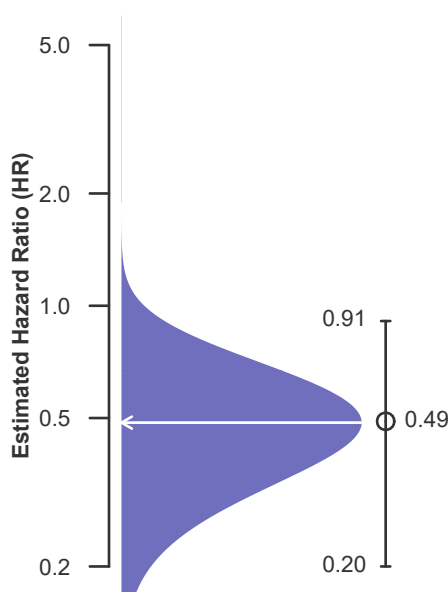
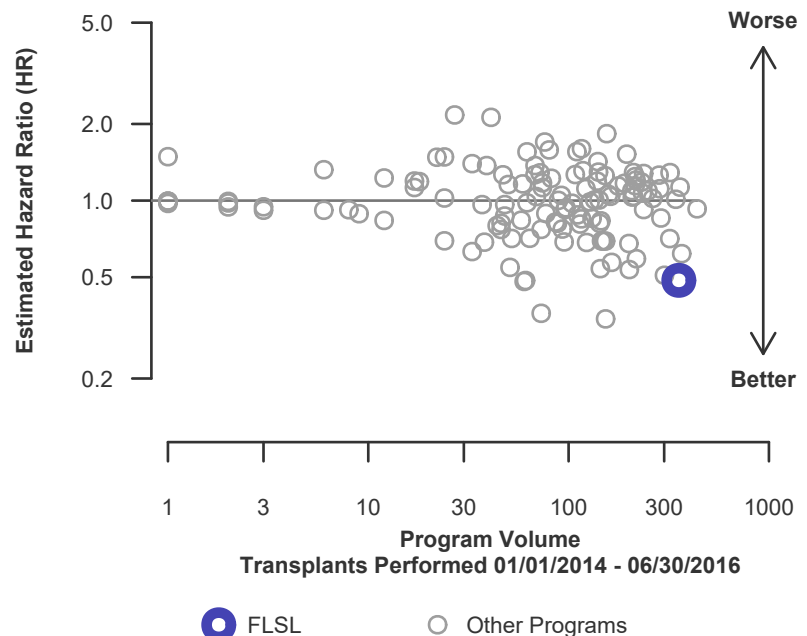


Figure C2. Adult (18+) 1-month graft failure HR program comparison





C. Transplant Information

Table C5D. Adult (18+) 1-month survival with a functioning deceased donor graft
Single organ transplants performed between 01/01/2014 and 06/30/2016
Deaths and retransplants are considered graft failures

	FLSL	U.S.
Number of transplants evaluated	355	13,997
Estimated probability of surviving with a functioning graft at 1 month (unadjusted for patient and donor characteristics)	98.59%	96.11%
Expected probability of surviving with a functioning graft at 1 month (adjusted for patient and donor characteristics)	96.56%	--
Number of observed graft failures (including deaths) during the first month after transplant	5	545
Number of expected graft failures (including deaths) during the first month after transplant	12.40	545
Estimated hazard ratio*	0.49	1.00
95% credible interval for the hazard ratio**	[0.20, 0.91]	--

* The hazard ratio provides an estimate of how Mayo Clinic Florida (FLSL)'s results compare with what was expected based on modeling the transplant outcomes from all U.S. programs. A ratio above 1 indicates higher than expected graft failure rates (e.g., a hazard ratio of 1.5 would indicate 50% higher risk), and a ratio below 1 indicates lower than expected graft failure rates (e.g., a hazard ratio of 0.75 would indicate 25% lower risk). If FLSL's graft failure rate were precisely the expected rate, the estimated hazard ratio would be 1.0.

** The 95% credible interval, [0.20, 0.91], indicates the location of FLSL's true hazard ratio with 95% probability. The best estimate is 51% lower risk of graft failure compared to an average program, but FLSL's performance could plausibly range from 80% reduced risk up to 9% reduced risk.

Figure C1D. Adult (18+) 1-month deceased donor graft failure HR estimate

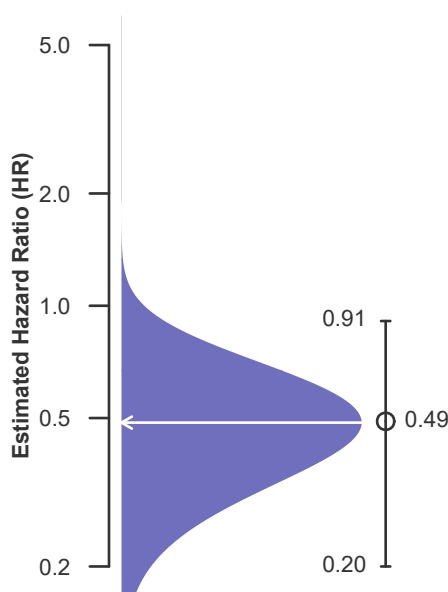
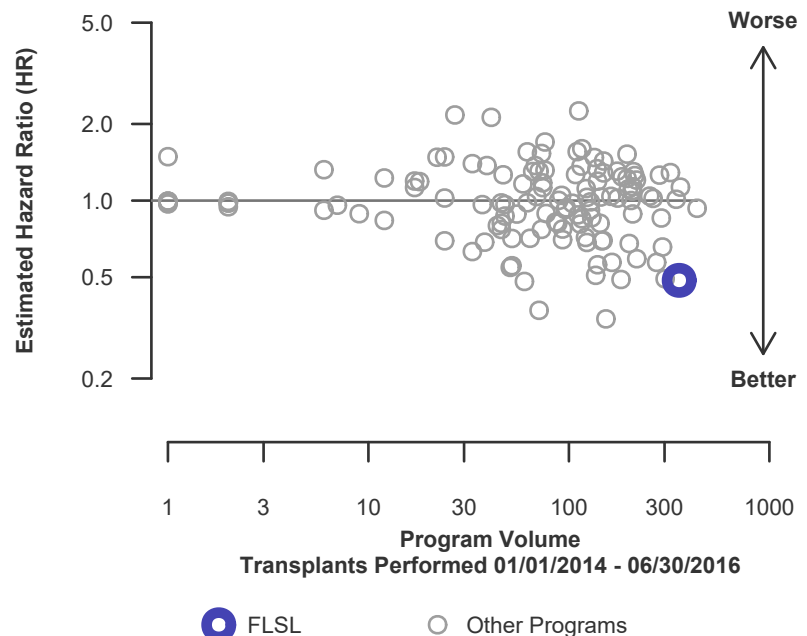


Figure C2D. Adult (18+) 1-month deceased donor graft failure HR program comparison





C. Transplant Information

Table C5L. Adult (18+) 1-month survival with a functioning living donor graft
Single organ transplants performed between 01/01/2014 and 06/30/2016
Deaths and retransplants are considered graft failures

This center did not perform any
transplants relevant to
this table during
01/01/2014-06/30/2016

**Figure C1L. Adult (18+) 1-month
living donor graft failure HR
estimate**

This center did not perform any
transplants relevant to
this figure during
01/01/2014-06/30/2016

**Figure C2L. Adult (18+) 1-month living donor graft failure HR
program comparison**

This center did not perform any
transplants relevant to
this figure during
01/01/2014-06/30/2016



C. Transplant Information

Table C6. Adult (18+) 1-year survival with a functioning graft
Single organ transplants performed between 01/01/2014 and 06/30/2016
Deaths and retransplants are considered graft failures

	FLSL	U.S.
Number of transplants evaluated	355	14,645
Estimated probability of surviving with a functioning graft at 1 year (unadjusted for patient and donor characteristics)	94.03%	89.90%
Expected probability of surviving with a functioning graft at 1 year (adjusted for patient and donor characteristics)	91.09%	--
Number of observed graft failures (including deaths) during the first year after transplant	20	1,400
Number of expected graft failures (including deaths) during the first year after transplant	30.97	1,400
Estimated hazard ratio*	0.67	1.00
95% credible interval for the hazard ratio**	[0.42, 0.97]	--

* The hazard ratio provides an estimate of how Mayo Clinic Florida (FLSL)'s results compare with what was expected based on modeling the transplant outcomes from all U.S. programs. A ratio above 1 indicates higher than expected graft failure rates (e.g., a hazard ratio of 1.5 would indicate 50% higher risk), and a ratio below 1 indicates lower than expected graft failure rates (e.g., a hazard ratio of 0.75 would indicate 25% lower risk). If FLSL's graft failure rate were precisely the expected rate, the estimated hazard ratio would be 1.0.

** The 95% credible interval, [0.42, 0.97], indicates the location of FLSL's true hazard ratio with 95% probability. The best estimate is 33% lower risk of graft failure compared to an average program, but FLSL's performance could plausibly range from 58% reduced risk up to 3% reduced risk.

Figure C3. Adult (18+) 1-year graft failure HR estimate

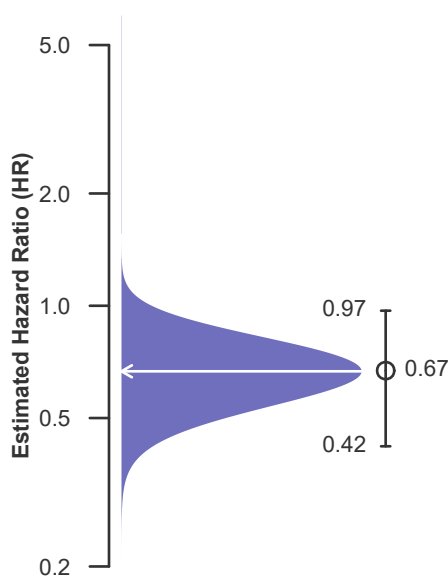
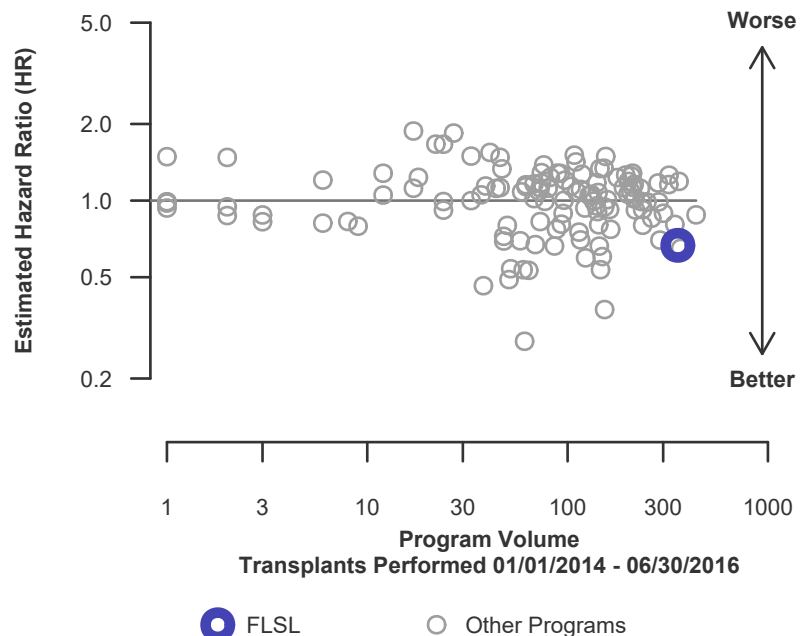


Figure C4. Adult (18+) 1-year graft failure HR program comparison





C. Transplant Information

Table C6D. Adult (18+) 1-year survival with a functioning deceased donor graft
Single organ transplants performed between 01/01/2014 and 06/30/2016
Deaths and retransplants are considered graft failures

	FLSL	U.S.
Number of transplants evaluated	355	13,997
Estimated probability of surviving with a functioning graft at 1 year (unadjusted for patient and donor characteristics)	94.03%	90.00%
Expected probability of surviving with a functioning graft at 1 year (adjusted for patient and donor characteristics)	91.09%	--
Number of observed graft failures (including deaths) during the first year after transplant	20	1,324
Number of expected graft failures (including deaths) during the first year after transplant	30.97	1,324
Estimated hazard ratio*	0.67	1.00
95% credible interval for the hazard ratio**	[0.42, 0.97]	--

* The hazard ratio provides an estimate of how Mayo Clinic Florida (FLSL)'s results compare with what was expected based on modeling the transplant outcomes from all U.S. programs. A ratio above 1 indicates higher than expected graft failure rates (e.g., a hazard ratio of 1.5 would indicate 50% higher risk), and a ratio below 1 indicates lower than expected graft failure rates (e.g., a hazard ratio of 0.75 would indicate 25% lower risk). If FLSL's graft failure rate were precisely the expected rate, the estimated hazard ratio would be 1.0.

** The 95% credible interval, [0.42, 0.97], indicates the location of FLSL's true hazard ratio with 95% probability. The best estimate is 33% lower risk of graft failure compared to an average program, but FLSL's performance could plausibly range from 58% reduced risk up to 3% reduced risk.

Figure C3D. Adult (18+) 1-year deceased donor graft failure HR estimate

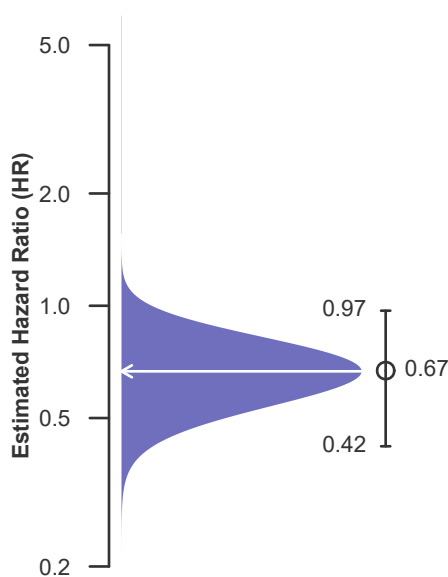
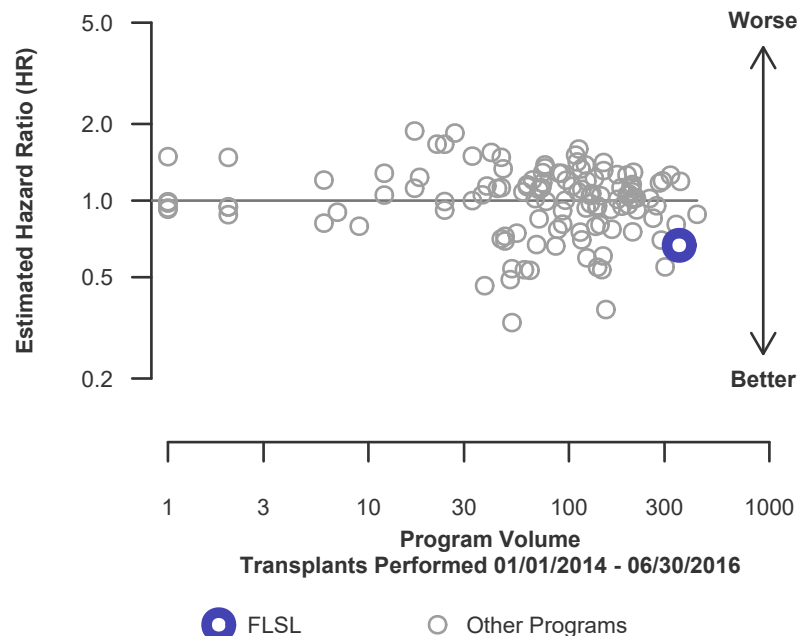


Figure C4D. Adult (18+) 1-year deceased donor graft failure HR program comparison





C. Transplant Information

Table C6L. Adult (18+) 1-year survival with a functioning living donor graft
Single organ transplants performed between 01/01/2014 and 06/30/2016
Deaths and retransplants are considered graft failures

This center did not perform any
transplants relevant to
this table during
01/01/2014-06/30/2016

**Figure C3L. Adult (18+) 1-year
living donor graft failure HR
estimate**

This center did not perform any
transplants relevant to
this figure during
01/01/2014-06/30/2016

**Figure C4L. Adult (18+) 1-year living donor graft failure HR
program comparison**

This center did not perform any
transplants relevant to
this figure during
01/01/2014-06/30/2016



C. Transplant Information

Table C7. Adult (18+) 3-year survival with a functioning graft
Single organ transplants performed between 07/01/2011 and 12/31/2013
Deaths and retransplants are considered graft failures

	FLSL	U.S.
Number of transplants evaluated	369	13,395
Estimated probability of surviving with a functioning graft at 3 years (unadjusted for patient and donor characteristics)	82.93%	80.71%
Expected probability of surviving with a functioning graft at 3 years (adjusted for patient and donor characteristics)	80.05%	--
Number of observed graft failures (including deaths) during the first 3 years after transplant	63	2,584
Number of expected graft failures (including deaths) during the first 3 years after transplant	75.62	2,584
Estimated hazard ratio*	0.84	1.00
95% credible interval for the hazard ratio**	[0.65, 1.05]	--

* The hazard ratio provides an estimate of how Mayo Clinic Florida (FLSL)'s results compare with what was expected based on modeling the transplant outcomes from all U.S. programs. A ratio above 1 indicates higher than expected graft failure rates (e.g., a hazard ratio of 1.5 would indicate 50% higher risk), and a ratio below 1 indicates lower than expected graft failure rates (e.g., a hazard ratio of 0.75 would indicate 25% lower risk). If FLSL's graft failure rate were precisely the expected rate, the estimated hazard ratio would be 1.0.

** The 95% credible interval, [0.65, 1.05], indicates the location of FLSL's true hazard ratio with 95% probability. The best estimate is 16% lower risk of graft failure compared to an average program, but FLSL's performance could plausibly range from 35% reduced risk up to 5% increased risk.

Figure C5. Adult (18+) 3-year graft failure HR estimate

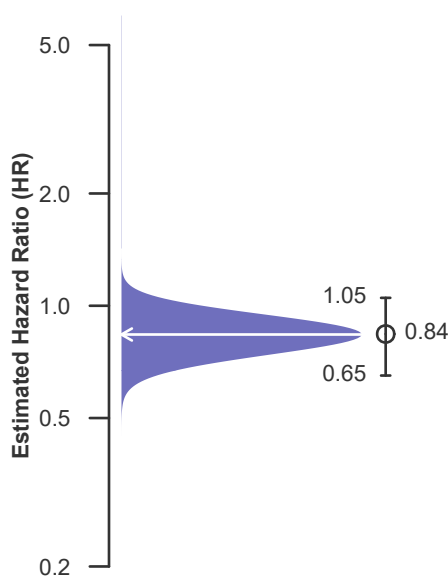
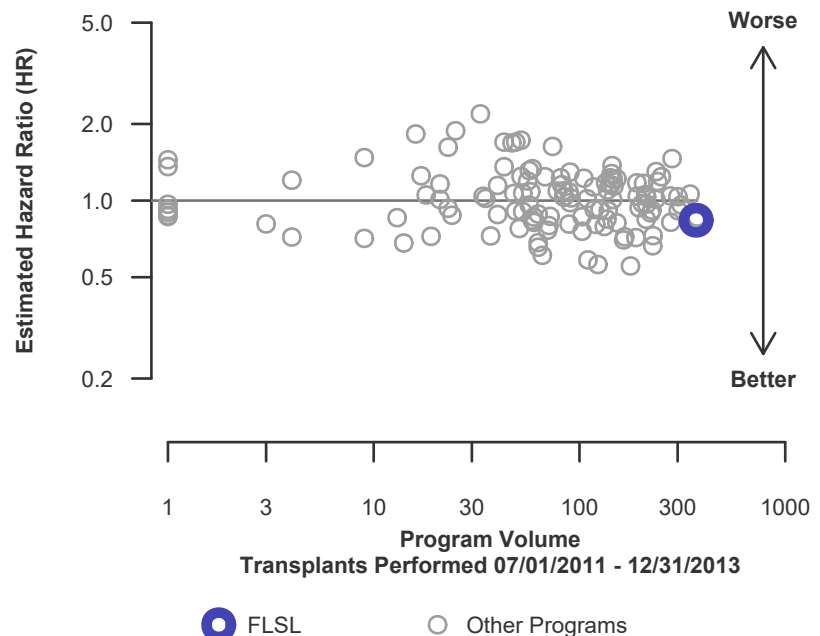


Figure C6. Adult (18+) 3-year graft failure HR program comparison





C. Transplant Information

Table C7D. Adult (18+) 3-year survival with a functioning deceased donor graft
Single organ transplants performed between 07/01/2011 and 12/31/2013
Deaths and retransplants are considered graft failures

	FLSL	U.S.
Number of transplants evaluated	368	12,894
Estimated probability of surviving with a functioning graft at 3 years (unadjusted for patient and donor characteristics)	82.88%	80.78%
Expected probability of surviving with a functioning graft at 3 years (adjusted for patient and donor characteristics)	80.04%	--
Number of observed graft failures (including deaths) during the first 3 years after transplant	63	2,478
Number of expected graft failures (including deaths) during the first 3 years after transplant	75.44	2,478
Estimated hazard ratio*	0.84	1.00
95% credible interval for the hazard ratio**	[0.65, 1.06]	--

* The hazard ratio provides an estimate of how Mayo Clinic Florida (FLSL)'s results compare with what was expected based on modeling the transplant outcomes from all U.S. programs. A ratio above 1 indicates higher than expected graft failure rates (e.g., a hazard ratio of 1.5 would indicate 50% higher risk), and a ratio below 1 indicates lower than expected graft failure rates (e.g., a hazard ratio of 0.75 would indicate 25% lower risk). If FLSL's graft failure rate were precisely the expected rate, the estimated hazard ratio would be 1.0.

** The 95% credible interval, [0.65, 1.06], indicates the location of FLSL's true hazard ratio with 95% probability. The best estimate is 16% lower risk of graft failure compared to an average program, but FLSL's performance could plausibly range from 35% reduced risk up to 6% increased risk.

Figure C5D. Adult (18+) 3-year deceased donor graft failure HR estimate

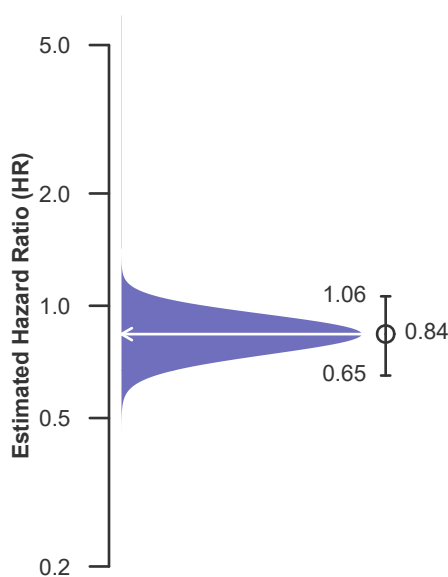
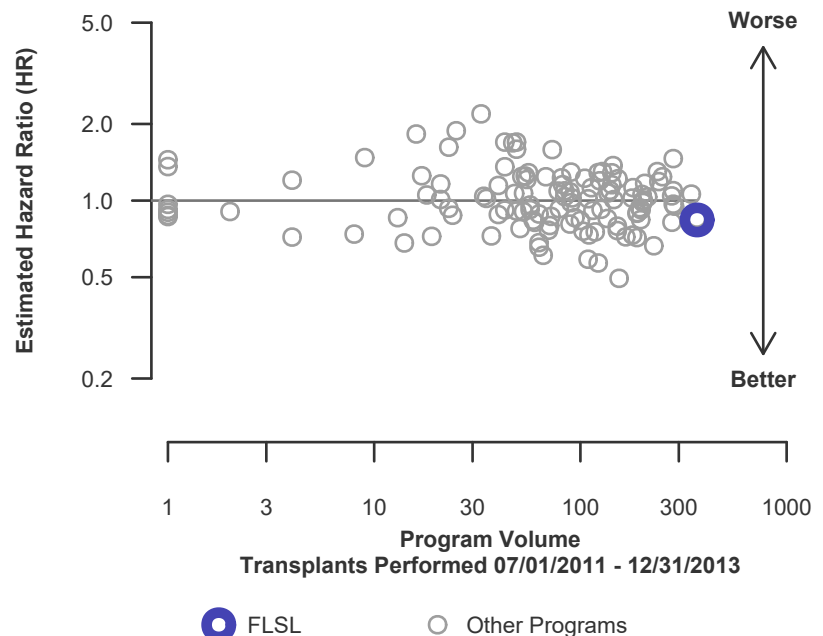


Figure C6D. Adult (18+) 3-year deceased donor graft failure HR program comparison





C. Transplant Information

Table C7L. Adult (18+) 3-year survival with a functioning living donor graft
Single organ transplants performed between 07/01/2011 and 12/31/2013
Deaths and retransplants are considered graft failures

	FLSL	U.S.
Number of transplants evaluated	1	501
Estimated probability of surviving with a functioning graft at 3 years (unadjusted for patient and donor characteristics)	100.00%	78.84%
Expected probability of surviving with a functioning graft at 3 years (adjusted for patient and donor characteristics)	83.20%	--
Number of observed graft failures (including deaths) during the first 3 years after transplant	0	106
Number of expected graft failures (including deaths) during the first 3 years after transplant	0.18	106
Estimated hazard ratio*	0.92	1.00
95% credible interval for the hazard ratio**	[0.11, 2.55]	--

* The hazard ratio provides an estimate of how Mayo Clinic Florida (FLSL)'s results compare with what was expected based on modeling the transplant outcomes from all U.S. programs. A ratio above 1 indicates higher than expected graft failure rates (e.g., a hazard ratio of 1.5 would indicate 50% higher risk), and a ratio below 1 indicates lower than expected graft failure rates (e.g., a hazard ratio of 0.75 would indicate 25% lower risk). If FLSL's graft failure rate were precisely the expected rate, the estimated hazard ratio would be 1.0.

** The 95% credible interval, [0.11, 2.55], indicates the location of FLSL's true hazard ratio with 95% probability. The best estimate is 8% lower risk of graft failure compared to an average program, but FLSL's performance could plausibly range from 89% reduced risk up to 155% increased risk.

Figure C5L. Adult (18+) 3-year living donor graft failure HR estimate

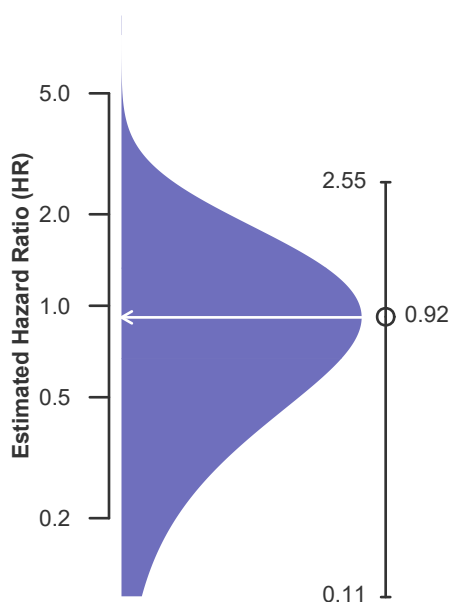
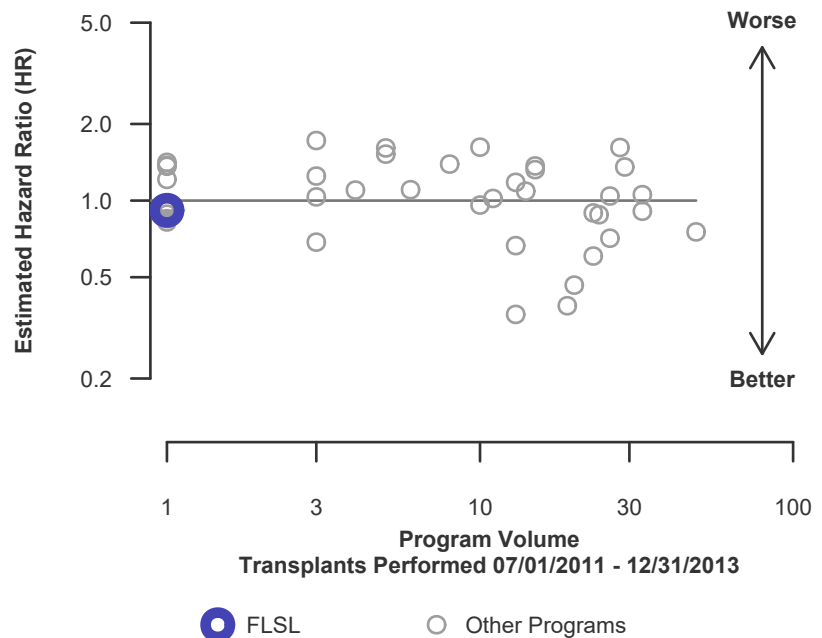


Figure C6L. Adult (18+) 3-year living donor graft failure HR program comparison





C. Transplant Information

Table C8. Pediatric (<18) 1-month survival with a functioning graft
Single organ transplants performed between 01/01/2014 and 06/30/2016
Deaths and retransplants are considered graft failures

This center did not perform any
transplants relevant to
this table during
01/01/2014-06/30/2016

**Figure C7. Pediatric (<18)
1-month graft failure HR estimate**

This center did not perform any
transplants relevant to
this figure during
01/01/2014-06/30/2016

**Figure C8. Pediatric (<18) 1-month graft failure HR program
comparison**

This center did not perform any
transplants relevant to
this figure during
01/01/2014-06/30/2016



C. Transplant Information

Table C8D. Pediatric (<18) 1-month survival with a functioning deceased donor graft
Single organ transplants performed between 01/01/2014 and 06/30/2016
Deaths and retransplants are considered graft failures

This center did not perform any
transplants relevant to
this table during
01/01/2014-06/30/2016

Figure C7D. Pediatric (<18)
1-month deceased donor graft
failure HR estimate

This center did not perform any
transplants relevant to
this figure during
01/01/2014-06/30/2016

Figure C8D. Pediatric (<18) 1-month deceased donor graft
failure HR program comparison

This center did not perform any
transplants relevant to
this figure during
01/01/2014-06/30/2016



C. Transplant Information

Table C8L. Pediatric (<18) 1-month survival with a functioning living donor graft
Single organ transplants performed between 01/01/2014 and 06/30/2016
Deaths and retransplants are considered graft failures

This center did not perform any
transplants relevant to
this table during
01/01/2014-06/30/2016

Figure C7L. Pediatric (<18)
1-month living donor graft failure
HR estimate

This center did not perform any
transplants relevant to
this figure during
01/01/2014-06/30/2016

Figure C8L. Pediatric (<18) 1-month living donor graft failure
HR program comparison

This center did not perform any
transplants relevant to
this figure during
01/01/2014-06/30/2016



C. Transplant Information

Table C9. Pediatric (<18) 1-year survival with a functioning graft
Single organ transplants performed between 01/01/2014 and 06/30/2016
Deaths and retransplants are considered graft failures

This center did not perform any
transplants relevant to
this table during
01/01/2014-06/30/2016

**Figure C9. Pediatric (<18) 1-year
graft failure HR estimate**

This center did not perform any
transplants relevant to
this figure during
01/01/2014-06/30/2016

**Figure C10. Pediatric (<18) 1-year graft failure HR program
comparison**

This center did not perform any
transplants relevant to
this figure during
01/01/2014-06/30/2016



C. Transplant Information

Table C9D. Pediatric (<18) 1-year survival with a functioning deceased donor graft
Single organ transplants performed between 01/01/2014 and 06/30/2016
Deaths and retransplants are considered graft failures

This center did not perform any
transplants relevant to
this table during
01/01/2014-06/30/2016

Figure C9D. Pediatric (<18)
1-year deceased donor graft
failure HR estimate

This center did not perform any
transplants relevant to
this figure during
01/01/2014-06/30/2016

Figure C10D. Pediatric (<18) 1-year deceased donor graft
failure HR program comparison

This center did not perform any
transplants relevant to
this figure during
01/01/2014-06/30/2016



C. Transplant Information

Table C9L. Pediatric (<18) 1-year survival with a functioning living donor graft
Single organ transplants performed between 01/01/2014 and 06/30/2016
Deaths and retransplants are considered graft failures

This center did not perform any
transplants relevant to
this table during
01/01/2014-06/30/2016

**Figure C9L. Pediatric (<18) 1-year
living donor graft failure HR
estimate**

This center did not perform any
transplants relevant to
this figure during
01/01/2014-06/30/2016

**Figure C10L. Pediatric (<18) 1-year living donor graft failure
HR program comparison**

This center did not perform any
transplants relevant to
this figure during
01/01/2014-06/30/2016



C. Transplant Information

Table C10. Pediatric (<18) 3-year survival with a functioning graft
Single organ transplants performed between 07/01/2011 and 12/31/2013
Deaths and retransplants are considered graft failures

This center did not perform any
transplants relevant to
this table during
07/01/2011-12/31/2013

**Figure C11. Pediatric (<18) 3-year
graft failure HR estimate**

This center did not perform any
transplants relevant to
this figure during
07/01/2011-12/31/2013

**Figure C12. Pediatric (<18) 3-year graft failure HR program
comparison**

This center did not perform any
transplants relevant to
this figure during
07/01/2011-12/31/2013



C. Transplant Information

Table C10D. Pediatric (<18) 3-year survival with a functioning deceased donor graft
Single organ transplants performed between 07/01/2011 and 12/31/2013
Deaths and retransplants are considered graft failures

This center did not perform any
transplants relevant to
this table during
07/01/2011-12/31/2013

Figure C11D. Pediatric (<18)
3-year deceased donor graft
failure HR estimate

This center did not perform any
transplants relevant to
this figure during
07/01/2011-12/31/2013

Figure C12D. Pediatric (<18) 3-year deceased donor graft
failure HR program comparison

This center did not perform any
transplants relevant to
this figure during
07/01/2011-12/31/2013



C. Transplant Information

Table C10L. Pediatric (<18) 3-year survival with a functioning living donor graft
Single organ transplants performed between 07/01/2011 and 12/31/2013
Deaths and retransplants are considered graft failures

This center did not perform any
transplants relevant to
this table during
07/01/2011-12/31/2013

Figure C11L. Pediatric (<18)
3-year living donor graft failure
HR estimate

This center did not perform any
transplants relevant to
this figure during
07/01/2011-12/31/2013

Figure C12L. Pediatric (<18) 3-year living donor graft failure
HR program comparison

This center did not perform any
transplants relevant to
this figure during
07/01/2011-12/31/2013



C. Transplant Information

Table C11. Adult (18+) 1-month patient survival

**Single organ transplants performed between 01/01/2014 and 06/30/2016
Retransplants excluded**

	FLSL	U.S.
Number of transplants evaluated	341	14,026
Estimated probability of surviving at 1 month (unadjusted for patient and donor characteristics)	98.83%	97.45%
Expected probability of surviving at 1 month (adjusted for patient and donor characteristics)	97.83%	--
Number of observed deaths during the first month after transplant	4	358
Number of expected deaths during the first month after transplant	7.48	358
Estimated hazard ratio*	0.63	1.00
95% credible interval for the hazard ratio**	[0.23, 1.23]	--

* The hazard ratio provides an estimate of how Mayo Clinic Florida (FLSL)'s results compare with what was expected based on modeling the transplant outcomes from all U.S. programs. A ratio above 1 indicates higher than expected patient death rates (e.g., a hazard ratio of 1.5 would indicate 50% higher risk), and a ratio below 1 indicates lower than expected patient death rates (e.g., a hazard ratio of 0.75 would indicate 25% lower risk). If FLSL's patient death rate were precisely the expected rate, the estimated hazard ratio would be 1.0.

** The 95% credible interval, [0.23, 1.23], indicates the location of FLSL's true hazard ratio with 95% probability. The best estimate is 37% lower risk of patient death compared to an average program, but FLSL's performance could plausibly range from 77% reduced risk up to 23% increased risk.

Figure C13. Adult (18+) 1-month patient death HR estimate

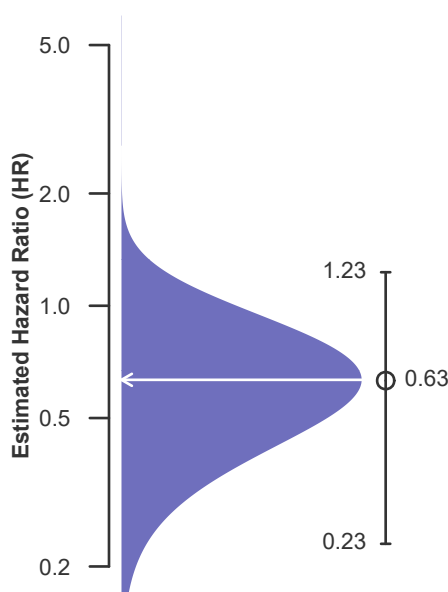
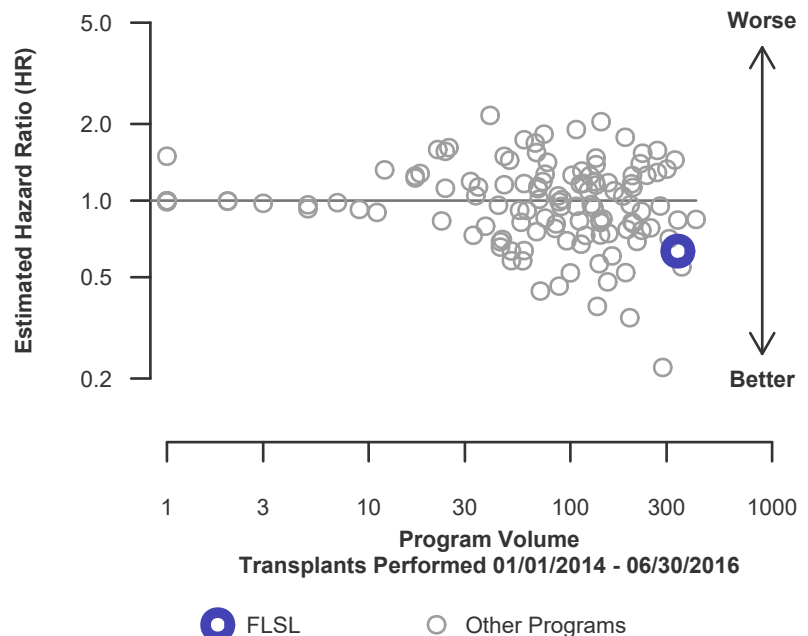


Figure C14. Adult (18+) 1-month patient death HR program comparison





C. Transplant Information

Table C11D. Adult (18+) 1-month patient survival (deceased donor graft recipients)

Single organ transplants performed between 01/01/2014 and 06/30/2016
Retransplants excluded

	FLSL	U.S.
Number of transplants evaluated	341	13,384
Estimated probability of surviving at 1 month (unadjusted for patient and donor characteristics)	98.83%	97.44%
Expected probability of surviving at 1 month (adjusted for patient and donor characteristics)	97.83%	--
Number of observed deaths during the first month after transplant	4	343
Number of expected deaths during the first month after transplant	7.48	343
Estimated hazard ratio*	0.63	1.00
95% credible interval for the hazard ratio**	[0.23, 1.23]	--

* The hazard ratio provides an estimate of how Mayo Clinic Florida (FLSL)'s results compare with what was expected based on modeling the transplant outcomes from all U.S. programs. A ratio above 1 indicates higher than expected patient death rates (e.g., a hazard ratio of 1.5 would indicate 50% higher risk), and a ratio below 1 indicates lower than expected patient death rates (e.g., a hazard ratio of 0.75 would indicate 25% lower risk). If FLSL's patient death rate were precisely the expected rate, the estimated hazard ratio would be 1.0.

** The 95% credible interval, [0.23, 1.23], indicates the location of FLSL's true hazard ratio with 95% probability. The best estimate is 37% lower risk of patient death compared to an average program, but FLSL's performance could plausibly range from 77% reduced risk up to 23% increased risk.

Figure C13D. Adult (18+) 1-month patient death HR estimate (deceased donor grafts)

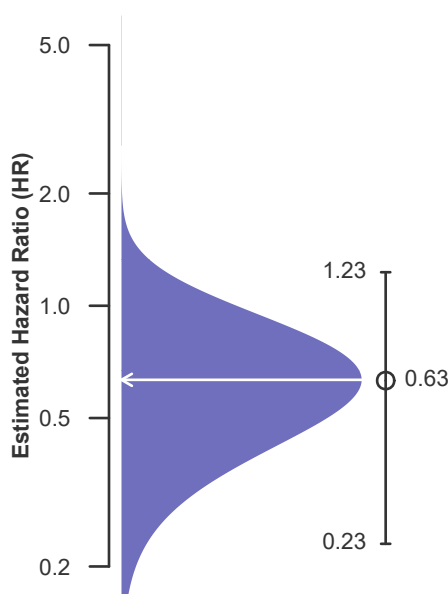
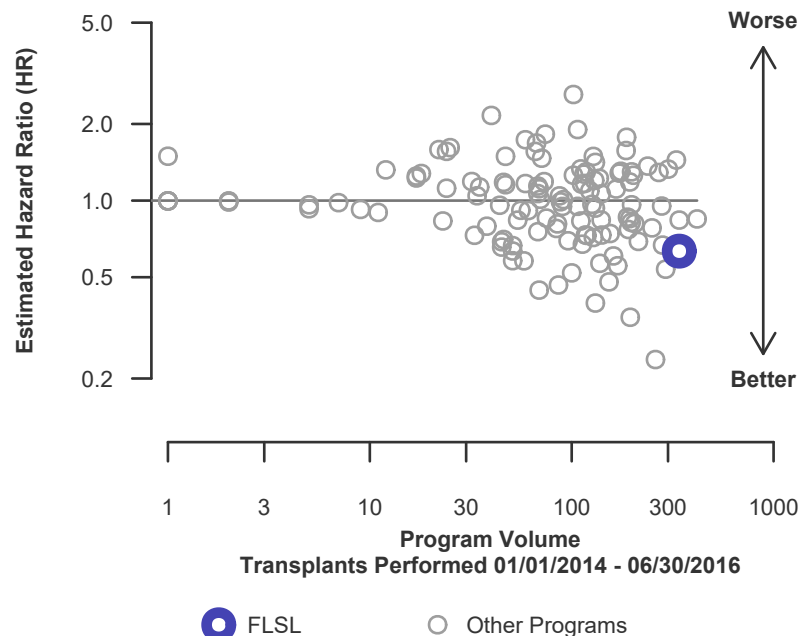


Figure C14D. Adult (18+) 1-month patient death HR program comparison (deceased donor grafts)





C. Transplant Information

Table C11L. Adult (18+) 1-month patient survival (living donor graft recipients)
Single organ transplants performed between 01/01/2014 and 06/30/2016
Retransplants excluded

This center did not perform any
transplants relevant to
this table during
01/01/2014-06/30/2016

Figure C13L. Adult (18+) 1-month patient death HR estimate (living donor grafts)

This center did not perform any
transplants relevant to
this figure during
01/01/2014-06/30/2016

Figure C14L. Adult (18+) 1-month patient death HR program comparison (living donor grafts)

This center did not perform any
transplants relevant to
this figure during
01/01/2014-06/30/2016



C. Transplant Information

Table C12. Adult (18+) 1-year patient survival

**Single organ transplants performed between 01/01/2014 and 06/30/2016
Retransplants excluded**

	FLSL	U.S.
Number of transplants evaluated	341	14,026
Estimated probability of surviving at 1 year (unadjusted for patient and donor characteristics)	95.03%	92.01%
Expected probability of surviving at 1 year (adjusted for patient and donor characteristics)	93.16%	--
Number of observed deaths during the first year after transplant	16	1,051
Number of expected deaths during the first year after transplant	22.44	1,051
Estimated hazard ratio*	0.74	1.00
95% credible interval for the hazard ratio**	[0.44, 1.11]	--

* The hazard ratio provides an estimate of how Mayo Clinic Florida (FLSL)'s results compare with what was expected based on modeling the transplant outcomes from all U.S. programs. A ratio above 1 indicates higher than expected patient death rates (e.g., a hazard ratio of 1.5 would indicate 50% higher risk), and a ratio below 1 indicates lower than expected patient death rates (e.g., a hazard ratio of 0.75 would indicate 25% lower risk). If FLSL's patient death rate were precisely the expected rate, the estimated hazard ratio would be 1.0.

** The 95% credible interval, [0.44, 1.11], indicates the location of FLSL's true hazard ratio with 95% probability. The best estimate is 26% lower risk of patient death compared to an average program, but FLSL's performance could plausibly range from 56% reduced risk up to 11% increased risk.

Figure C15. Adult (18+) 1-year patient death HR estimate

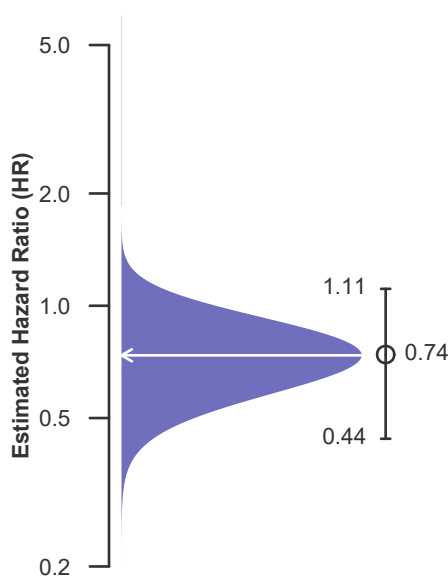
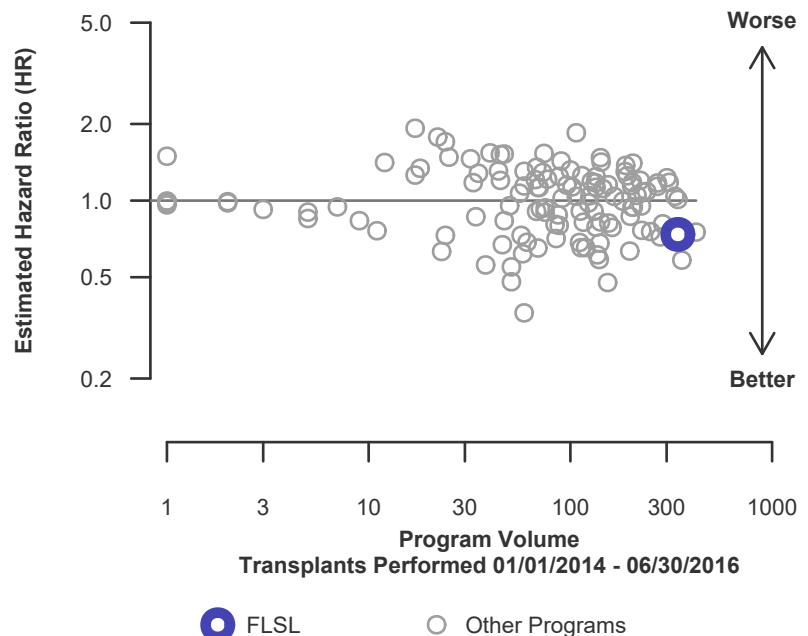


Figure C16. Adult (18+) 1-year patient death HR program comparison





C. Transplant Information

Table C12D. Adult (18+) 1-year patient survival (deceased donor graft recipients)
Single organ transplants performed between 01/01/2014 and 06/30/2016
Retransplants excluded

	FLSL	U.S.
Number of transplants evaluated	341	13,384
Estimated probability of surviving at 1 year (unadjusted for patient and donor characteristics)	95.03%	91.99%
Expected probability of surviving at 1 year (adjusted for patient and donor characteristics)	93.16%	--
Number of observed deaths during the first year after transplant	16	1,005
Number of expected deaths during the first year after transplant	22.44	1,005
Estimated hazard ratio*	0.74	1.00
95% credible interval for the hazard ratio**	[0.44, 1.11]	--

* The hazard ratio provides an estimate of how Mayo Clinic Florida (FLSL)'s results compare with what was expected based on modeling the transplant outcomes from all U.S. programs. A ratio above 1 indicates higher than expected patient death rates (e.g., a hazard ratio of 1.5 would indicate 50% higher risk), and a ratio below 1 indicates lower than expected patient death rates (e.g., a hazard ratio of 0.75 would indicate 25% lower risk). If FLSL's patient death rate were precisely the expected rate, the estimated hazard ratio would be 1.0.

** The 95% credible interval, [0.44, 1.11], indicates the location of FLSL's true hazard ratio with 95% probability. The best estimate is 26% lower risk of patient death compared to an average program, but FLSL's performance could plausibly range from 56% reduced risk up to 11% increased risk.

Figure C15D. Adult (18+) 1-year patient death HR estimate (deceased donor grafts)

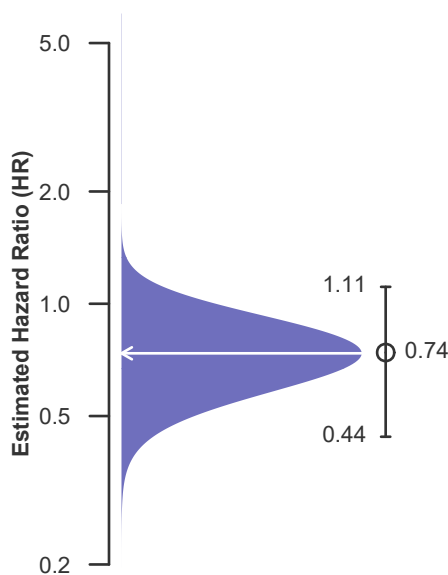
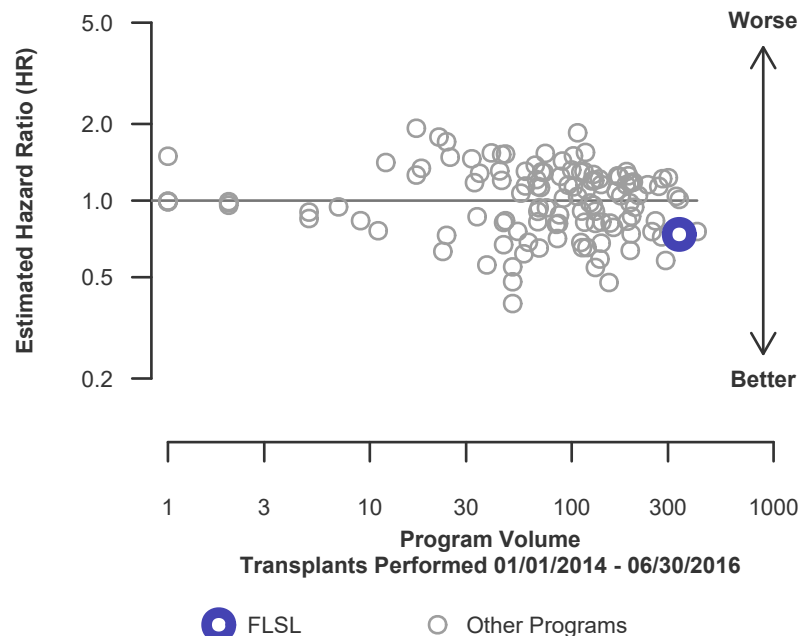


Figure C16D. Adult (18+) 1-year patient death HR program comparison (deceased donor grafts)





C. Transplant Information

Table C12L. Adult (18+) 1-year patient survival (living donor graft recipients)
Single organ transplants performed between 01/01/2014 and 06/30/2016
Retransplants excluded

This center did not perform any
transplants relevant to
this table during
01/01/2014-06/30/2016

Figure C15L. Adult (18+) 1-year patient death HR estimate (living donor grafts)

This center did not perform any
transplants relevant to
this figure during
01/01/2014-06/30/2016

Figure C16L. Adult (18+) 1-year patient death HR program comparison (living donor grafts)

This center did not perform any
transplants relevant to
this figure during
01/01/2014-06/30/2016



C. Transplant Information

Table C13. Adult (18+) 3-year patient survival

**Single organ transplants performed between 07/01/2011 and 12/31/2013
Retransplants excluded**

	FLSL	U.S.
Number of transplants evaluated	350	12,749
Estimated probability of surviving at 3 years (unadjusted for patient and donor characteristics)	86.57%	83.60%
Expected probability of surviving at 3 years (adjusted for patient and donor characteristics)	83.50%	--
Number of observed deaths during the first 3 years after transplant	47	2,091
Number of expected deaths during the first 3 years after transplant	58.33	2,091
Estimated hazard ratio*	0.81	1.00
95% credible interval for the hazard ratio**	[0.60, 1.05]	--

* The hazard ratio provides an estimate of how Mayo Clinic Florida (FLSL)'s results compare with what was expected based on modeling the transplant outcomes from all U.S. programs. A ratio above 1 indicates higher than expected patient death rates (e.g., a hazard ratio of 1.5 would indicate 50% higher risk), and a ratio below 1 indicates lower than expected patient death rates (e.g., a hazard ratio of 0.75 would indicate 25% lower risk). If FLSL's patient death rate were precisely the expected rate, the estimated hazard ratio would be 1.0.

** The 95% credible interval, [0.60, 1.05], indicates the location of FLSL's true hazard ratio with 95% probability. The best estimate is 19% lower risk of patient death compared to an average program, but FLSL's performance could plausibly range from 40% reduced risk up to 5% increased risk.

Figure C17. Adult (18+) 3-year patient death HR estimate

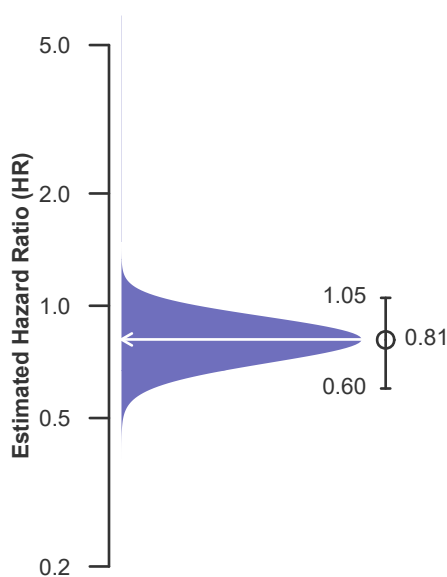
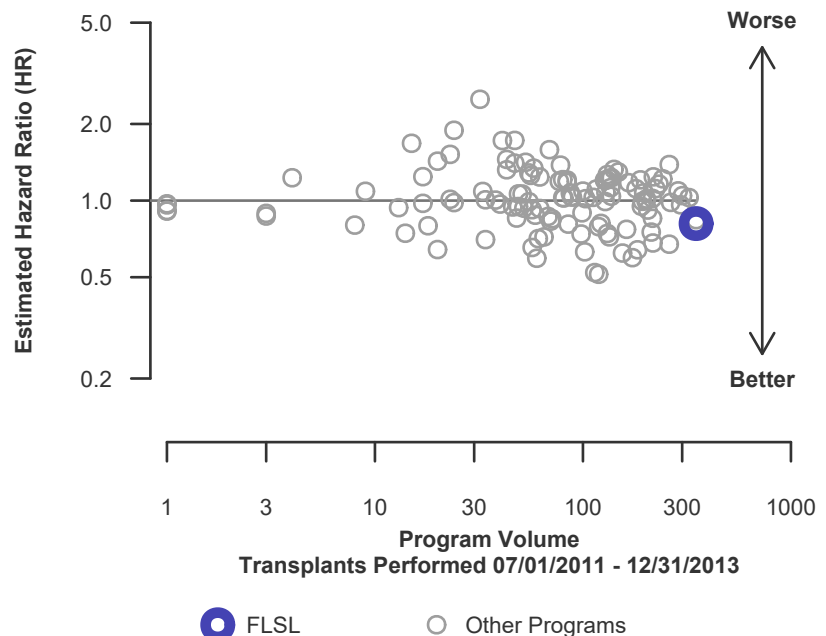


Figure C18. Adult (18+) 3-year patient death HR program comparison





C. Transplant Information

Table C13D. Adult (18+) 3-year patient survival (deceased donor graft recipients)
Single organ transplants performed between 07/01/2011 and 12/31/2013
Retransplants excluded

	FLSL	U.S.
Number of transplants evaluated	349	12,256
Estimated probability of surviving at 3 years (unadjusted for patient and donor characteristics)	86.53%	83.53%
Expected probability of surviving at 3 years (adjusted for patient and donor characteristics)	83.49%	--
Number of observed deaths during the first 3 years after transplant	47	2,019
Number of expected deaths during the first 3 years after transplant	58.18	2,019
Estimated hazard ratio*	0.81	1.00
95% credible interval for the hazard ratio**	[0.60, 1.06]	--

* The hazard ratio provides an estimate of how Mayo Clinic Florida (FLSL)'s results compare with what was expected based on modeling the transplant outcomes from all U.S. programs. A ratio above 1 indicates higher than expected patient death rates (e.g., a hazard ratio of 1.5 would indicate 50% higher risk), and a ratio below 1 indicates lower than expected patient death rates (e.g., a hazard ratio of 0.75 would indicate 25% lower risk). If FLSL's patient death rate were precisely the expected rate, the estimated hazard ratio would be 1.0.

** The 95% credible interval, [0.60, 1.06], indicates the location of FLSL's true hazard ratio with 95% probability. The best estimate is 19% lower risk of patient death compared to an average program, but FLSL's performance could plausibly range from 40% reduced risk up to 6% increased risk.

Figure C17D. Adult (18+) 3-year patient death HR estimate (deceased donor grafts)

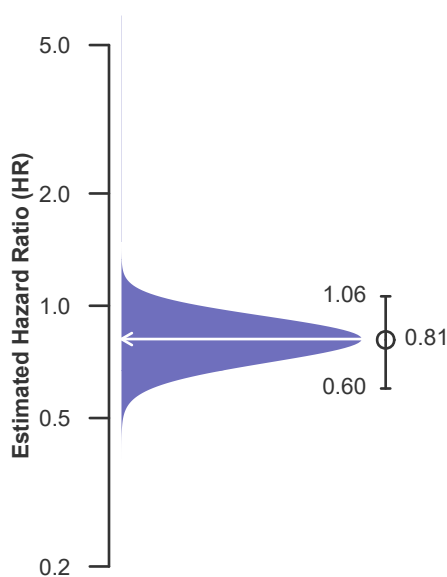
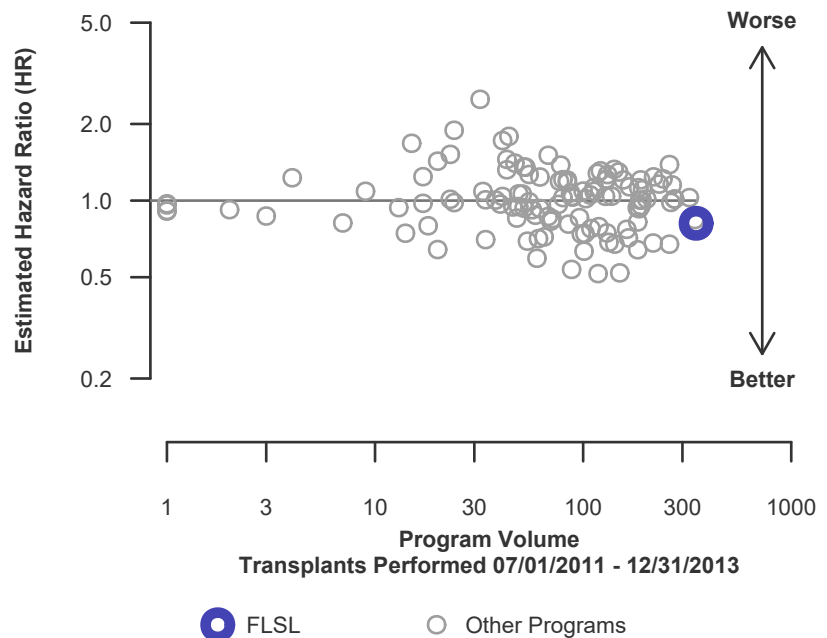


Figure C18D. Adult (18+) 3-year patient death HR program comparison (deceased donor grafts)





C. Transplant Information

**Table C13L. Adult (18+) 3-year patient survival (living donor graft recipients)
Single organ transplants performed between 07/01/2011 and 12/31/2013
Retransplants excluded**

	FLSL	U.S.
Number of transplants evaluated	1	493
Estimated probability of surviving at 3 years (unadjusted for patient and donor characteristics)	100.00%	85.40%
Expected probability of surviving at 3 years (adjusted for patient and donor characteristics)	86.54%	--
Number of observed deaths during the first 3 years after transplant	0	72
Number of expected deaths during the first 3 years after transplant	0.14	72
Estimated hazard ratio*	0.93	1.00
95% credible interval for the hazard ratio**	[0.11, 2.60]	--

* The hazard ratio provides an estimate of how Mayo Clinic Florida (FLSL)'s results compare with what was expected based on modeling the transplant outcomes from all U.S. programs. A ratio above 1 indicates higher than expected patient death rates (e.g., a hazard ratio of 1.5 would indicate 50% higher risk), and a ratio below 1 indicates lower than expected patient death rates (e.g., a hazard ratio of 0.75 would indicate 25% lower risk). If FLSL's patient death rate were precisely the expected rate, the estimated hazard ratio would be 1.0.

** The 95% credible interval, [0.11, 2.60], indicates the location of FLSL's true hazard ratio with 95% probability. The best estimate is 7% lower risk of patient death compared to an average program, but FLSL's performance could plausibly range from 89% reduced risk up to 160% increased risk.

Figure C17L. Adult (18+) 3-year patient death HR estimate (living donor grafts)

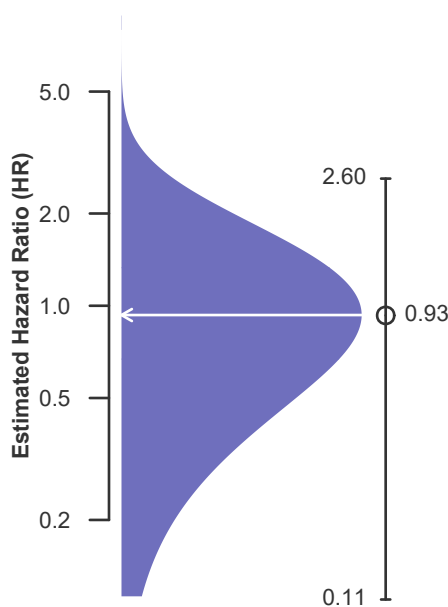
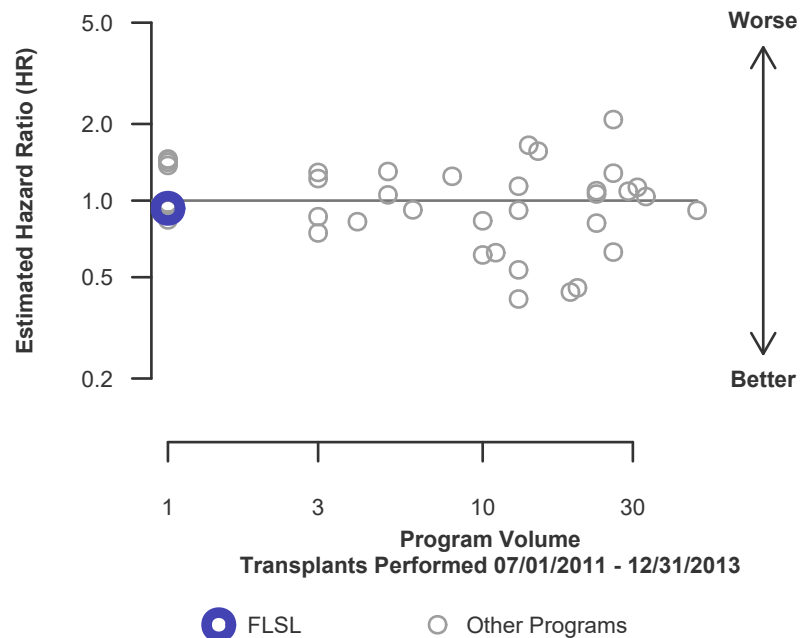


Figure C18L. Adult (18+) 3-year patient death HR program comparison (living donor grafts)





C. Transplant Information

Table C14. Pediatric (<18) 1-month patient survival

Single organ transplants performed between 01/01/2014 and 06/30/2016
Retransplants excluded

This center did not perform any
transplants relevant to
this table during
01/01/2014-06/30/2016

Figure C19. Pediatric (<18) 1-month patient death HR estimate

This center did not perform any
transplants relevant to
this figure during
01/01/2014-06/30/2016

Figure C20. Pediatric (<18) 1-month patient death HR program comparison

This center did not perform any
transplants relevant to
this figure during
01/01/2014-06/30/2016



C. Transplant Information

**Table C14D. Pediatric (<18) 1-month patient survival (deceased donor graft recipients)
Single organ transplants performed between 01/01/2014 and 06/30/2016
Retransplants excluded**

This center did not perform any
transplants relevant to
this table during
01/01/2014-06/30/2016

**Figure C19D. Pediatric (<18)
1-month patient death HR
estimate (deceased donor grafts)**

This center did not perform any
transplants relevant to
this figure during
01/01/2014-06/30/2016

**Figure C20D. Pediatric (<18) 1-month patient death HR
program comparison (deceased donor grafts)**

This center did not perform any
transplants relevant to
this figure during
01/01/2014-06/30/2016



C. Transplant Information

Table C14L. Pediatric (<18) 1-month patient survival (living donor graft recipients)
Single organ transplants performed between 01/01/2014 and 06/30/2016
Retransplants excluded

This center did not perform any
transplants relevant to
this table during
01/01/2014-06/30/2016

Figure C19L. Pediatric (<18) 1-month patient death HR estimate (living donor grafts)

This center did not perform any
transplants relevant to
this figure during
01/01/2014-06/30/2016

Figure C20L. Pediatric (<18) 1-month patient death HR program comparison (living donor grafts)

This center did not perform any
transplants relevant to
this figure during
01/01/2014-06/30/2016



C. Transplant Information

Table C15. Pediatric (<18) 1-year patient survival

Single organ transplants performed between 01/01/2014 and 06/30/2016
Retransplants excluded

This center did not perform any
transplants relevant to
this table during
01/01/2014-06/30/2016

Figure C21. Pediatric (<18) 1-year patient death HR estimate

This center did not perform any
transplants relevant to
this figure during
01/01/2014-06/30/2016

Figure C22. Pediatric (<18) 1-year patient death HR program comparison

This center did not perform any
transplants relevant to
this figure during
01/01/2014-06/30/2016



C. Transplant Information

Table C15D. Pediatric (<18) 1-year patient survival (deceased donor graft recipients)
Single organ transplants performed between 01/01/2014 and 06/30/2016
Retransplants excluded

This center did not perform any
transplants relevant to
this table during
01/01/2014-06/30/2016

**Figure C21D. Pediatric (<18)
1-year patient death HR estimate
(deceased donor grafts)**

This center did not perform any
transplants relevant to
this figure during
01/01/2014-06/30/2016

**Figure C22D. Pediatric (<18) 1-year patient death HR program
comparison (deceased donor grafts)**

This center did not perform any
transplants relevant to
this figure during
01/01/2014-06/30/2016



C. Transplant Information

Table C15L. Pediatric (<18) 1-year patient survival (living donor graft recipients)
Single organ transplants performed between 01/01/2014 and 06/30/2016
Retransplants excluded

This center did not perform any
transplants relevant to
this table during
01/01/2014-06/30/2016

**Figure C21L. Pediatric (<18)
1-year patient death HR estimate
(living donor grafts)**

This center did not perform any
transplants relevant to
this figure during
01/01/2014-06/30/2016

**Figure C22L. Pediatric (<18) 1-year patient death HR program
comparison (living donor grafts)**

This center did not perform any
transplants relevant to
this figure during
01/01/2014-06/30/2016



C. Transplant Information

Table C16. Pediatric (<18) 3-year patient survival

Single organ transplants performed between 07/01/2011 and 12/31/2013
Retransplants excluded

This center did not perform any
transplants relevant to
this table during
07/01/2011-12/31/2013

Figure C23. Pediatric (<18) 3-year patient death HR estimate

This center did not perform any
transplants relevant to
this figure during
07/01/2011-12/31/2013

Figure C24. Pediatric (<18) 3-year patient death HR program comparison

This center did not perform any
transplants relevant to
this figure during
07/01/2011-12/31/2013



C. Transplant Information

Table C16D. Pediatric (<18) 3-year patient survival (deceased donor graft recipients)
Single organ transplants performed between 07/01/2011 and 12/31/2013
Retransplants excluded

This center did not perform any
transplants relevant to
this table during
07/01/2011-12/31/2013

**Figure C23D. Pediatric (<18)
3-year patient death HR estimate
(deceased donor grafts)**

This center did not perform any
transplants relevant to
this figure during
07/01/2011-12/31/2013

**Figure C24D. Pediatric (<18) 3-year patient death HR program
comparison (deceased donor grafts)**

This center did not perform any
transplants relevant to
this figure during
07/01/2011-12/31/2013



C. Transplant Information

Table C16L. Pediatric (<18) 3-year patient survival (living donor graft recipients)
Single organ transplants performed between 07/01/2011 and 12/31/2013
Retransplants excluded

This center did not perform any
transplants relevant to
this table during
07/01/2011-12/31/2013

**Figure C23L. Pediatric (<18)
3-year patient death HR estimate
(living donor grafts)**

This center did not perform any
transplants relevant to
this figure during
07/01/2011-12/31/2013

**Figure C24L. Pediatric (<18) 3-year patient death HR program
comparison (living donor grafts)**

This center did not perform any
transplants relevant to
this figure during
07/01/2011-12/31/2013



C. Transplant Information

Table C17. Multi-organ transplant graft survival: 01/01/2014 - 06/30/2016

Adult (18+) Transplants

Transplant Type	First-Year Outcomes					
	Transplants Performed		Liver Graft Failures		Estimated Liver Graft Survival	
	FLSL-TX1	USA	FLSL-TX1	USA	FLSL-TX1	USA
Kidney-Liver	27	1,505	1	135	96.3%	90.4%

Pediatric (<18) Transplants

No pediatric (<18) multi-organ transplants were performed

Table C18. Multi-organ transplant patient survival: 01/01/2014 - 06/30/2016

Adult (18+) Transplants

Transplant Type	First-Year Outcomes					
	Transplants Performed		Patient Deaths		Estimated Patient Survival	
	FLSL-TX1	USA	FLSL-TX1	USA	FLSL-TX1	USA
Kidney-Liver	27	1,505	1	125	96.3%	91.1%

Pediatric (<18) Transplants

No pediatric (<18) multi-organ transplants were performed



D. Living Donor Information

Table D1. Living donor summary: 01/01/2014 - 12/31/2016

Living Donor Follow-Up	This Center			United States		
	01/2014-12/2014	01/2015-12/2015	01/2016-06/2016	01/2014-12/2014	01/2015-12/2015	01/2016-06/2016
Number of Living Donors	--	--	--	--	--	--
6-Month Follow-Up						
Donors due for follow-up	--	--	--	--	--	--
Timely clinical data	--	--	--	--	--	--
	--%	--%	--%	--%	--%	--%
Timely lab data	--	--	--	--	--	--
	--%	--%	--%	--%	--%	--%
12-Month Follow-Up						
Donors due for follow-up	--	--		--	--	
Timely clinical data	--	--		--	--	
	--%	--%		--%	--%	
Timely lab data	--	--		--	--	
	--%	--%		--%	--%	
24-Month Follow-Up						
Donors due for follow-up	--			--		
Timely clinical data	--			--		
	--%			--%		
Timely lab data	--			--		
	--%			--%		

Follow-up completion standards through 2 years post-donation were implemented in policy on February 1, 2013.