



---

## COVID-19 Guide

---

### Adjustments to Transplant Program and OPO Evaluation Metrics

The Scientific Registry of Transplant Recipients (SRTR), under contract from the Health Resources and Services Administration (HRSA), is charged with evaluating the performance of the nation's transplant system through publication of semi-annual transplant program-specific reports (PSRs) and organ procurement organization (OPO)-specific reports (OSRs). These reports contain performance metrics covering various time periods. For OPOs, these metrics include eligible death conversion rates and deceased donor organ yield. For transplant programs, they include pre-transplant mortality rates (formerly called waitlist mortality rates), transplant rates, organ offer acceptance rates, patient mortality after listing, and 1-month, 90-day, 1-year, 1-year conditional on 90-day, and 3-year posttransplant outcomes including graft survival and patient survival.

In response to the current global pandemic, SRTR modified the evaluation metrics for transplant programs and OPOs for the reports released in January 2021, July 2021 and January 2022. These reports made adjustments to transplant program and OPO performance metrics so that data beyond the declaration of a national public health emergency on March 13, 2020, were not included in the metrics.

Modifications for the July 2022 reporting cycle were considered at the Analytic Methods Subcommittee of the SRTR Review Committee (SRC) at its meeting on March 24, 2021, and the full SRC meetings April 27, 2021 and on January 11, 2022. Both the Analytic Methods Subcommittee and the full SRC recommended an ongoing carve out of the first quarter of the pandemic (March 13, 2020 through June 12, 2020) from adjusted performance metrics, as detailed below. These recommendations were reviewed by HRSA's Division of Transplantation, which oversees SRTR. HRSA approved these recommendations, which SRTR will implement for the July 2022 reporting cycle. These changes will remain in force beyond the July 2022 reporting cycle, unless otherwise amended:

Posttransplant Outcomes (including 1-month, 90-day, 1-year, 1-year conditional on 90-day, and 3-year graft and patient survival): Evaluation cohorts will exclude transplants performed between March 13, 2020 and June 12, 2020, inclusive of March 13 and June 12. Patients given transplants before March 13, 2020 will have follow-up censored on March 12, 2020. Patients given transplants after June 12, 2020 will resume normal follow-up. Follow-up will not resume for patients given transplants before March 13, 2020 who are alive with function on June 12, 2020; however, this may be reconsidered as SRTR continues to explore moving to a period-prevalent methodology:

1-month, 90-day, 1-year & 1-year conditional on 90-day Patient and Graft Survival Evaluations: Transplants 1/1/2019-3/12/2020, follow-up through 3/12/2020. Transplants 6/13/2020-6/30/2021, follow-up through 12/31/2021.

3-year Patient and Graft Survival Evaluations: Transplants 7/1/2016-12/31/2018; follow-up through 3/12/2020.

Pre-Transplant Mortality Rate (formerly called Waitlist Mortality Rate): Evaluation cohorts will exclude March 13, 2020 through June 12, 2020, inclusive of March 13 and June 12:



---

## COVID-19 Guide

---

Days after listing (and before transplant) between 1/1/2020-3/12/2020 and 6/13/2020-12/31/2021.

Transplant Rate: Evaluation cohorts will exclude March 13, 2020 through June 12, 2020, inclusive of March 13 and June 12:

Candidates on the waitlist 1/1/2020-3/12/2020 and 6/13/2020-12/31/2021.

Overall Rate of Mortality After Listing: Evaluation cohorts will exclude March 13, 2020 through June 12, 2020, inclusive of March 13 and June 12:

Evaluation period: 1/1/2020-3/12/2020 and 6/13/2020-12/31/2021.

Offer Acceptance Rate: These evaluations are based on normal reporting cohorts.

Offers received 1/1/2021-12/31/2021.

These decisions will apply to the evaluations released in the SRTR's semi-annual program-specific reports scheduled for release on July 6, 2022. These changes have been communicated to the leadership of the Organ Procurement and Transplantation Network's (OPTN) Membership and Professional Standards Committee (MSPC). These decisions will then be re-evaluated as more information becomes available in preparation for the release scheduled for January 2023.

As with the January 2022 reports, SRTR will continue to report descriptive data beyond March 12, 2020, e.g., waitlist counts, transplant counts, recipient characteristics, donor counts, donor characteristics, etc., but will alter data for performance evaluation metrics as described above.



---

## User Guide

---

This report contains a wide range of useful information about the kidney-pancreas transplant program at Loma Linda University Medical Center. The report has three main sections:

- A. Program Summary
- B. Waiting List Information
- C. Transplant Information

The Program Summary is a one-page summary highlighting characteristics of the program, including the number of candidates on the waiting list, the number of transplants performed at the program, the number of patients being cared for by the program, and patient outcomes, including outcomes while on the waiting list (the transplant rate and the death rate while on the waiting list) and outcomes after transplant (patient and graft survival probabilities). If the program performed transplants in both adults and children, survival probabilities for adults and children (pediatrics) are provided separately. For each of the outcomes measures presented, a comparison is provided showing what would be expected at this program if it were performing as similar programs around the country perform when treating similar patients. More details regarding these outcome measures are provided in Sections B and C of the report.

The Waiting List Information section contains more detailed information on how many candidates are on the waiting list at the program, the types of candidates on the waiting list, how long candidates typically have to wait for a transplant at this program, how frequently candidates successfully receive a transplant, and how often candidates on the waiting list die before receiving a transplant.

Table B1 shows the activity on this program's waiting list during two recent 1-year periods and provides comparisons to all programs within this program's OPTN region (see <http://optn.transplant.hrsa.gov/members/regions.asp> for information on OPTN regions) and the nation as a whole. Tables B2 and B3 describe the candidates on the waiting list at this program, with comparisons to candidates waiting in the same donor service area (OPO/DSA) the OPTN region, and the nation as a whole.

Table B4 shows how many candidates were removed from the waiting list because they received a transplant. The program's transplant rate is calculated as the number of candidates who received a transplant divided by the person-years observed at the program (person-years is a combination of how many candidates were on the waiting list along with how long each candidate was followed since some candidates are not on the waiting list for the entire year). The transplant rate and comparisons to what would be expected at this program are presented in Figures B1 and B2. Figure B1 shows the transplant rate compared to what was expected at this program. The expected transplant rate is an estimate of what we would expect at this program if it were performing transplants at rates similar to other programs in the US with similar candidates on their waiting lists. The expected rate is only an estimate, and is made with a certain level of uncertainty. This uncertainty is shown in Figure B2. Figure B2 displays the ratio of the observed to the expected transplant rate. A ratio of 1 indicates that the observed transplant rate was equal to the expected transplant rate, while a ratio less than 1 indicates the observed rate was lower than expected rate and a ratio greater than 1 indicates the observed rate was higher than the expected rate. However, the level of uncertainty must be considered when interpreting these numbers. The 95% interval is also shown on Figure B2. This interval provides a range within which the true ratio of observed to expected transplant rates is likely to be. If this



---

## User Guide

---

confidence interval includes (crosses) 1.0, then we cannot say that this program's observed transplant rate is different from what would be expected. The observed deceased donor transplant rate at this program was 62.6 per 100 person-years. Transplant rates are also provided for adult and pediatric patients separately along with comparisons to adult and pediatric rates in the DSA, the OPTN region, and the nation. Please refer to the PSR Technical Methods documentation available at <http://www.srtr.org> for more detail regarding how expected rates are calculated.

The pre-transplant mortality rate (previously called the waiting list mortality rate) for candidates on the waiting list is presented in Table B5 and Figures B4-B6. These data are presented in the same way as the transplant rate data in the previous section. The intent of this table and figures is to describe risk of death once candidates are listed rather than while they are listed, but before they are transplanted. Therefore, time at risk and deaths after removal from the waiting list for reasons other than transplant, transfer to another transplant program, or recovery (no longer needing a transplant), and before any subsequent transplant, are included. As with transplant rates, mortality rates should be interpreted carefully taking into consideration the interval displayed in Figure B5. For a complete description of how observed and expected mortality rates are calculated, please refer to the technical documentation available at <http://www.srtr.org>.

Survival from listing is presented in Table B6 and Figures B7-B9. These data are presented in the same way as the pre-transplant mortality rate data in the previous section. The intent of this table and figures is to describe risk of death once candidates are listed rather than while they are listed, including after a transplant. As with transplant rates, mortality rates should be interpreted carefully taking into consideration the interval displayed in Figure B8. For a complete description of how observed and expected mortality rates are calculated, please refer to the technical documentation available at <http://www.srtr.org>.

Table B7 presents information on what happens to candidates on the waiting list by three different time points after listing: 6 months, 12 months, and 18 months. The table displays percentages of candidates who have died, been removed from the waiting list, been transplanted, or been transferred or lost-to-follow-up. Tables B8 and B9 provide more detail regarding how many candidates have received a deceased donor transplant by certain time points during the first 3 years after being put on the transplant waiting list. Each row of Tables B8 and B9 presents the percent of candidates who received a deceased donor transplant by each time point. Table B10 presents data on the time it took for different percentages of patients to be transplanted for candidates added to the list between 01/01/2016 and 06/30/2021. The time it took for 5% (the 5th percentile) of patients to receive a transplant at this program was 1 months. If "Not Observed" is displayed in the table, then too few candidates received transplants before 12/31/2021 to calculate a particular percentile of transplant times.

Table B11 contains a summary of the offer acceptance practices of the program. The offer acceptance ratio indicates whether the program is more or less likely to accept offers than the average program. If the offer acceptance ratio is greater than 1.0, then the program tends to accept more offers than average; if the offer acceptance ratio is less than 1.0, then the program tends to accept fewer offers than average. Figure B10 shows the distribution of program offer acceptance rates as well as the offer acceptance rate for this program. Figures B11 - B15 similarly show offer acceptance rates for subsets of offers.



---

## User Guide

---

The Transplant Information section begins with descriptions of transplant recipients in Tables C1 and C2. Data on recipients of deceased donor transplants are presented (Tables C1D and C2D); if applicable, data on recipients of living donor transplants are presented separately (Tables C1L and C2L). Comparisons to the region and the nation as a whole are provided. A description of the deceased donors used at this program is provided in Table C3D, along with characteristics of living donors in Table C3L, if applicable. Finally, information on the transplant procedure for deceased and living donor transplants is presented in Tables C4D and C4L, respectively.

Starting with Table C5, transplant outcomes are presented along with comparisons to what would be expected at this program and what happened in the nation as a whole. Tables C5-C14 (tables C5-C10 for Pancreas) present information on graft survival (survival of the transplanted organ), with data presented separately for adult and pediatric recipients. Patients are followed from the time of transplant until either failure of the transplanted organ or death, whichever comes first. Please refer to the technical methods for more information on these calculations (<http://www.srtr.org>).

While Tables C5-C14 present data on graft survival, Tables C15-C20 (tables C11-C20 for Pancreas) present information on patient survival. For these tables, patients are followed from the time of transplant until death, regardless of whether the transplant is functioning or the patient required another transplant to survive.

Tables C21 and C22 summarize the multiorgan transplant outcomes at this program. The summary statistics in these tables are descriptive and are not risk-adjusted for different donor and candidate characteristics.

Additional information regarding the technical methods and the risk adjustment models used to estimate expected event rates is available on the SRTR website at <http://www.srtr.org>. We welcome and encourage feedback on these reports. Please feel free to share feedback with the SRTR at the following e-mail: [srtr@srtr.org](mailto:srtr@srtr.org).



## Table of Contents

Section	Page
COVID-19 Guide	i
User Guide	iii
<b>A. Program Summary</b>	
Program Summary	1
<b>B. Waiting List Information</b>	
Waiting list activity	2
Demographic characteristics of waiting list candidates	3
Medical characteristics of waiting list candidates	4
Deceased donor transplant rates	5
Pre-transplant mortality rates (formerly called Waiting list mortality rates)	6
Patient survival from listing	7
Waiting list candidate status after listing	8
Percent of candidates with deceased donor transplants: demographic characteristics	9
Percent of candidates with deceased donor transplants: medical characteristics	10
Time to transplant for waiting list candidates	11
Offer acceptance practices	12
<b>C. Transplant Information</b>	
Deceased donor transplant recipient demographic characteristics	14
Deceased donor transplant recipient medical characteristics	15
Deceased donor characteristics	16
Deceased donor transplant characteristics	17
Deceased donor kidney graft survival	18
Deceased donor patient survival	24



## A. Program Summary

Figure A1. Waiting list and transplant activity

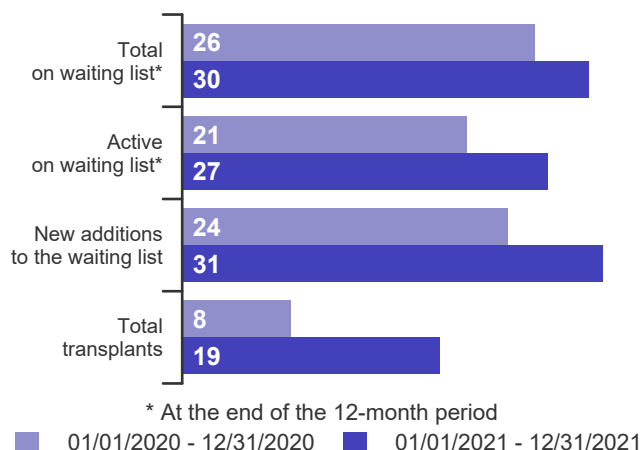


Table A1. Census of transplant recipients

Recipients	01/01/2020-12/31/2020	01/01/2021-12/31/2021
Transplanted at this center	8	19
Followed by this center*	86	83
...transplanted at this program	84	82
...transplanted elsewhere	2	1

\* Recipients followed are transplant recipients for whom the center has submitted a post-transplant follow-up form for a transplant that took place before the 12-month interval for each column.

Figure A2. Transplant rates  
01/01/2020 - 03/12/2020, 06/13/2020 - 12/31/2021

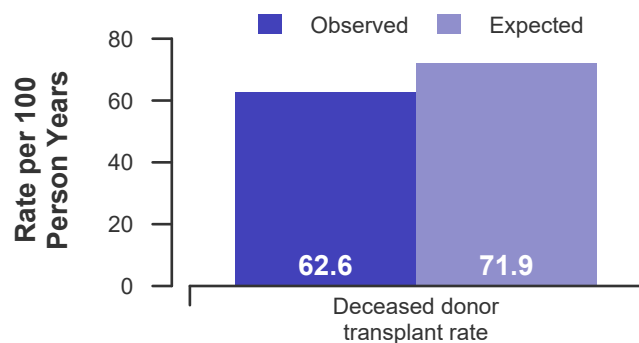


Figure A3. Pre-transplant mortality rates  
01/01/2020 - 03/12/2020, 06/13/2020 - 12/31/2021

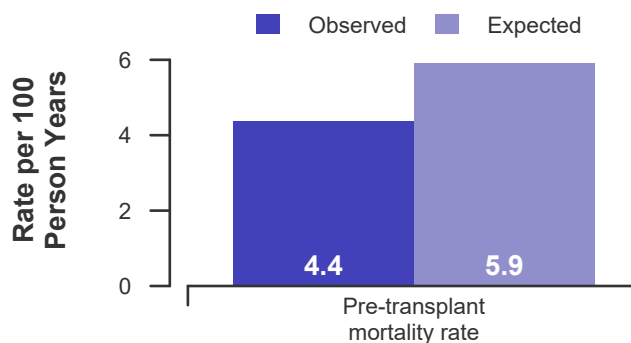


Figure A4. First-year adult graft and patient survival:  
01/01/2019 - 03/12/2020, 06/13/2020 - 06/30/2021

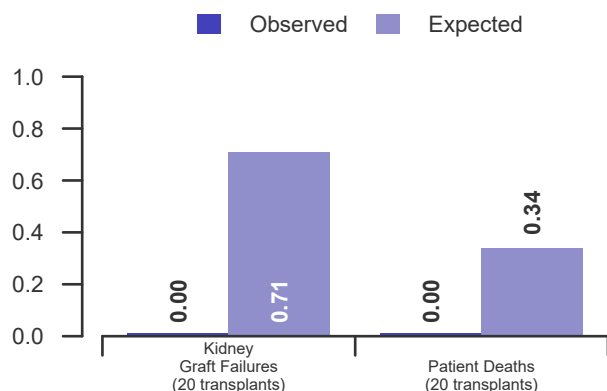


Figure A5. First-year pediatric graft & patient survival:  
01/01/2019 - 03/12/2020, 06/13/2020 - 06/30/2021

This center did not perform any transplants relevant to this figure during 01/01/2019-06/30/2021





## B. Waiting List Information

**Table B1. Waiting list activity summary: 01/01/2020 - 12/31/2021**

Waiting List Registrations	Counts for this center		Activity for 01/01/2021 to 12/31/2021 as percent of registrants on waiting list on 01/01/2021		
	01/01/2020- 12/31/2020	01/01/2021- 12/31/2021	This Center (%)	OPTN Region (%)	U.S. (%)
<b>On waiting list at start</b>	15	26	100.0	100.0	100.0
<b>Additions</b>					
New listings at this center	24	31	119.2	70.2	86.3
<b>Removals</b>					
Transferred to another center	1	0	0.0	0.4	0.8
Received living donor transplant*	1	3	11.5	3.7	4.3
Received deceased donor transplant*	9	19	73.1	48.2	49.8
Died	2	0	0.0	4.5	5.7
Transplanted at another center	0	0	0.0	0.8	4.6
Deteriorated	0	0	0.0	1.2	4.2
Recovered	0	1	3.8	0.4	0.4
Other reasons	0	4	15.4	7.3	8.6
<b>On waiting list at end of period</b>	26	30	115.4	103.7	107.8

\* These patients were removed from waiting list with removal code indicating transplant; this may not equal the number of transplants performed at this center during the specified period.





## B. Waiting List Information

**Table B2. Demographic characteristics of waiting list candidates****Candidates registered on the waiting list between 01/01/2021 and 12/31/2021**

Demographic Characteristic	New Waiting List Registrations 01/01/2021 to 12/31/2021 (%)			All Waiting List Registrations on 12/31/2021 (%)		
	This Center (N=31)	OPTN Region (N=172)	U.S. (N=1,488)	This Center (N=30)	OPTN Region (N=254)	U.S. (N=1,859)
<b>All (%)</b>	100.0	100.0	100.0	100.0	100.0	100.0
<b>Ethnicity/Race (%)*</b>						
White	29.0	43.0	45.4	20.0	39.0	47.0
African-American	12.9	10.5	30.1	10.0	11.4	29.1
Hispanic/Latino	48.4	35.5	17.6	53.3	36.6	16.7
Asian	9.7	8.1	5.4	16.7	10.2	5.1
Other	0.0	2.9	1.5	0.0	2.8	2.0
Unknown	0.0	0.0	0.0	0.0	0.0	0.0
<b>Age (%)</b>						
<2 years	0.0	0.0	0.0	0.0	0.0	0.0
2-11 years	0.0	0.0	0.1	0.0	0.4	0.1
12-17 years	0.0	0.0	0.0	0.0	0.4	0.1
18-34 years	25.8	24.4	24.3	20.0	28.0	24.9
35-49 years	61.3	58.7	51.5	60.0	55.9	52.8
50-64 years	12.9	16.9	23.9	20.0	15.4	22.2
65-69 years	0.0	0.0	0.2	0.0	0.0	0.1
70+ years	0.0	0.0	0.0	0.0	0.0	0.0
<b>Gender (%)</b>						
Male	67.7	64.5	59.1	70.0	55.9	55.1
Female	32.3	35.5	40.9	30.0	44.1	44.9

\* Race and ethnicity are reported together as a single data element, reflecting their data collection (either race or ethnicity is required, but not both). Patients formerly coded as white and Hispanic are coded as Hispanic. Race and ethnicity sum to 100%.



## B. Waiting List Information

**Table B3. Medical characteristics of waiting list candidates**

Candidates registered on the waiting list between 01/01/2021 and 12/31/2021

Medical Characteristic	New Waiting List Registrations 01/01/2021 to 12/31/2021 (%)			All Waiting List Registrations on 12/31/2021 (%)		
	This Center (N=31)	OPTN Region (N=172)	U.S. (N=1,488)	This Center (N=30)	OPTN Region (N=254)	U.S. (N=1,859)
<b>All (%)</b>	100.0	100.0	100.0	100.0	100.0	100.0
<b>Blood Type (%)</b>						
O	58.1	53.5	50.1	63.3	50.8	49.0
A	29.0	29.7	32.2	26.7	31.5	29.5
B	9.7	12.2	13.8	6.7	13.4	18.5
AB	3.2	4.7	4.0	3.3	4.3	3.0
Unknown	0.0	0.0	0.0	0.0	0.0	0.0
<b>Previous Transplant (%)</b>						
Yes	3.2	4.1	3.7	3.3	5.5	5.8
No	96.8	95.9	96.3	96.7	94.5	94.2
Unknown	0.0	0.0	0.0	0.0	0.0	0.0
<b>Initial CPRA (%)</b>						
0-9%	87.1	84.3	77.4	86.7	79.5	75.3
10-79%	9.7	9.9	16.1	10.0	14.2	16.6
80+%	3.2	5.8	6.5	3.3	6.3	8.2
Unknown	0.0	0.0	0.0	0.0	0.0	0.0



## B. Waiting List Information

**Table B4D. Deceased donor transplant rates: 01/01/2020 - 03/12/2020, 06/13/2020 - 12/31/2021**

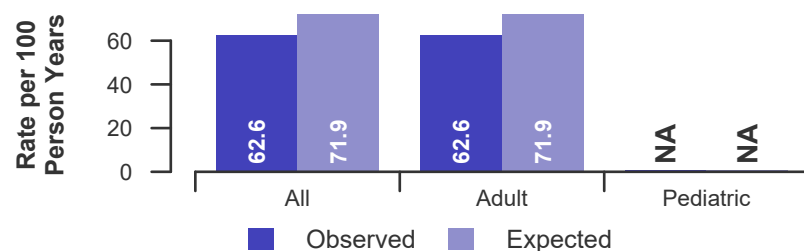
Waiting List Registrations	This Center	OPO/DSA	Region	U.S.
<b>All Candidates</b>				
Count on waiting list at start*	15	65	297	2,323
Person Years**	43.1	105.9	498.8	4,125.5
Removals for Transplant	27	67	215	1,717
<b>Adult (18+) Candidates</b>				
Count on waiting list at start*	15	65	297	2,320
Person Years**	43.1	105.9	497.6	4,121.6
Removals for transplant	27	67	215	1,715
<b>Pediatric (&lt;18) Candidates</b>				
Count on waiting list at start*	--	--	--	--
Person Years**	--	--	--	--
Removals for transplant	--	--	--	--

Since candidates listed for combined liver-intestine transplants are also often listed for a pancreas for vascular continuity, candidates simultaneously listed for intestine transplants are not included in this table.

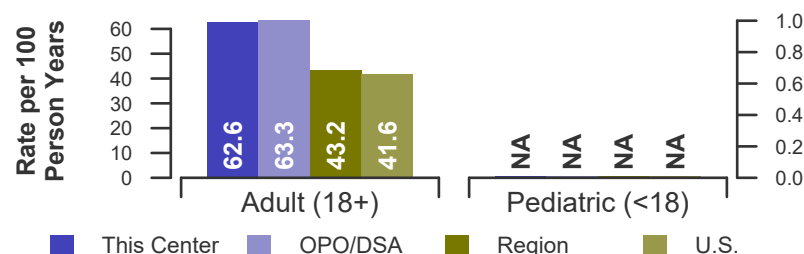
\* Counts in this table may be lower than similar counts in other waiting list tables, such as Table B1. A small percentage (~1%) of patients are found to have died or been transplanted before being removed from the waiting list, so these patients are excluded if the event occurs prior to the start of the study period. Inactive time on the waiting list is included in the calculations for this table.

\*\* Person years are calculated as days (converted to fractional years). The number of days from January 1 or from the date of first wait listing until death, transplant, removal from the waiting list or December 31. Person years excludes time on the waiting list between March 13, 2020 and June 12, 2020.

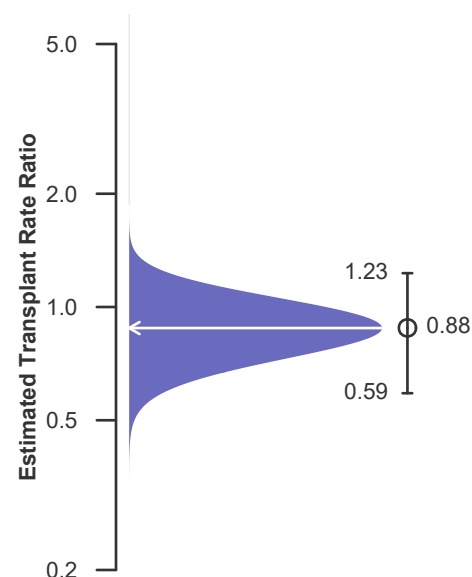
**Figure B1D. Observed and expected deceased donor transplant rates: 01/01/2020 - 03/12/2020, 06/13/2020 - 12/31/2021**



**Figure B3D. Observed adult (18+) and pediatric (<18) deceased donor transplant rates: 01/01/2020 - 03/12/2020, 06/13/2020 - 12/31/2021**



**Figure B2D. Deceased donor transplant rate ratio estimate**





## B. Waiting List Information

**Table B5. Pre-transplant mortality rates: 01/01/2020 - 03/12/2020, 06/13/2020 - 12/31/2021**

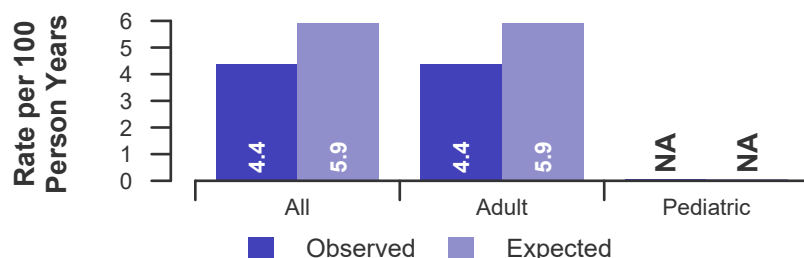
Waiting List Registrations	This Center	OPO/DSA	Region	U.S.
<b>All Candidates</b>				
Count on waiting list at start*	15	65	297	2,323
Person Years**	45.9	132.2	563.1	4,682.3
Number of deaths	2	9	33	259
<b>Adult (18+) Candidates</b>				
Count on waiting list at start*	15	65	297	2,320
Person Years**	45.9	132.2	562.0	4,675.1
Number of deaths	2	9	33	259
<b>Pediatric (&lt;18) Candidates</b>				
Count on waiting list at start*	--	--	--	--
Person Years**	--	--	--	--
Number of deaths	--	--	--	--

Since candidates listed for combined liver-intestine transplants are also often listed for a pancreas for vascular continuity, candidates simultaneously listed for intestine transplants are not included in this table.

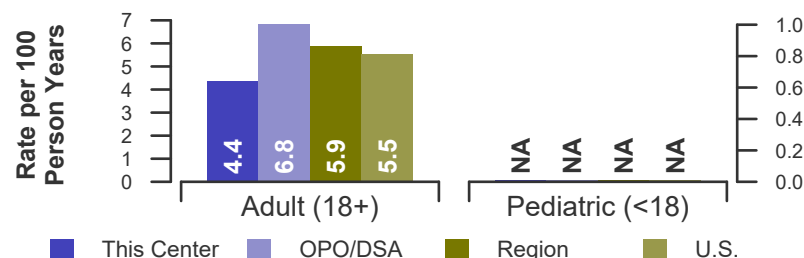
\* Counts in this table may be lower than similar counts in other waiting list tables, such as Table B1. A small percentage (~1%) of patients are found to have died or been transplanted before being removed from the waiting list, so these patients are excluded if the event occurs prior to the start of the study period. Inactive time on the waiting list is included in the calculations for this table.

\*\* Person years are calculated as days (converted to fractional years). The number of days from January 1 or from the date of first wait listing until death, transplant, 60 days after recovery, transfer or December 31. Person years excludes time on the waiting list between March 13, 2020 and June 12, 2020.

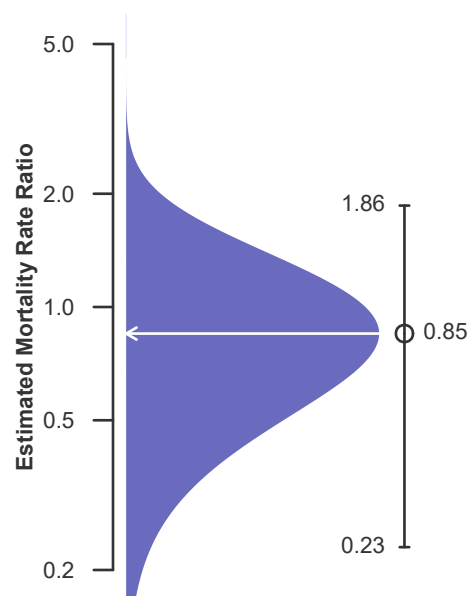
**Figure B4. Observed and expected pre-transplant mortality rates: 01/01/2020 - 03/12/2020, 06/13/2020 - 12/31/2021**



**Figure B6. Observed adult (18+) and pediatric (<18) pre-transplant mortality rates: 01/01/2020 - 03/12/2020, 06/13/2020 - 12/31/2021**



**Figure B5. Pre-transplant mortality rate ratio estimate**





## B. Waiting List Information

**Table B6. Rates of patient mortality after listing: 01/01/2020 - 03/12/2020, 06/13/2020 - 12/31/2021**

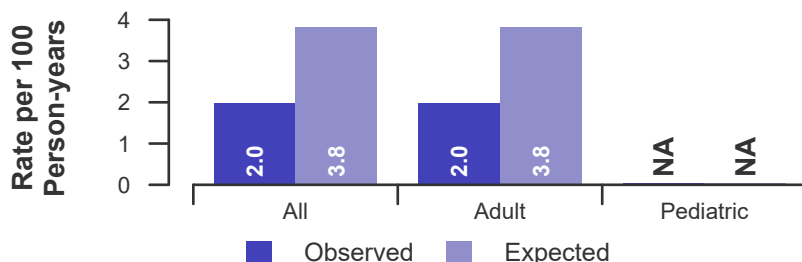
Waiting List Registrations	This Center	OPO/DSA	Region	U.S.
<b>All Patients</b>				
Count at risk during the evaluation period	95	290	1,080	8,702
Person-years*	101.8	334.0	1,294.5	10,502.8
Number of Deaths	2	13	36	403
<b>Adult (18+) Patients</b>				
Count at risk during the evaluation period	95	290	1,078	8,695
Person-years*	101.8	334.0	1,293.3	10,493.9
Number of Deaths	2	13	36	403
<b>Pediatric (&lt;18) Patients</b>				
Count at risk during the evaluation period	0	0	2	7
Person-years*	0.0	0.0	1.1	8.9
Number of Deaths	0	0	0	0

Since candidates listed for combined liver-intestine transplants are also often listed for a pancreas for vascular continuity, candidates simultaneously listed for intestine transplants are not included in this table.

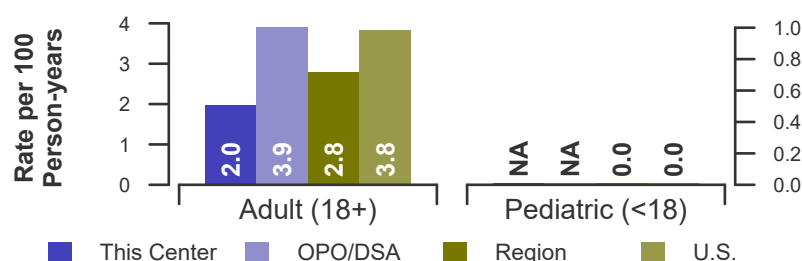
\* Person-years are calculated as days (converted to fractional years). The number of days from 01/01/2020, or from the date of first wait listing until death, reaching 5 years after listing or December 31, 2021. Person years excludes time on the waiting list between March 13, 2020 and June 12, 2020.

\*\* Patient mortality after listing describes the relative survival experience of patients after listing. It depends on many factors, some of which are outside of the control of the transplant program. For example, availability of organs may not be the same in every part of the country.

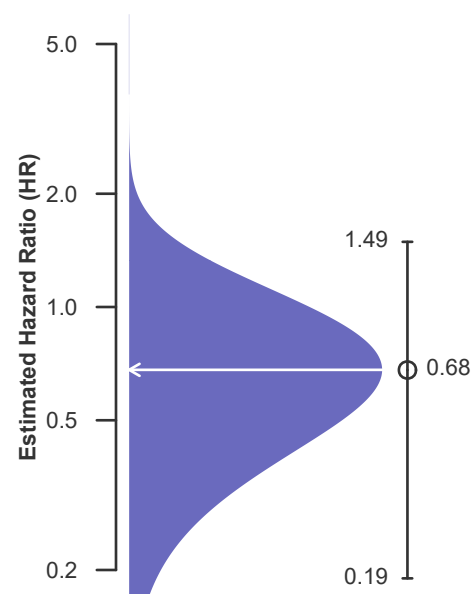
**Figure B7. Observed and expected rates of patient mortality after listing: 01/01/2020 - 03/12/2020, 06/13/2020 - 12/31/2021**



**Figure B9. Observed adult (18+) and pediatric (<18) rates of patient mortality after listing: 01/01/2020 - 03/12/2020, 06/13/2020 - 12/31/2021**



**Figure B8. HR estimate of patient mortality after listing**





## B. Waiting List Information

**Table B7. Waiting list candidate status after listing**  
**Candidates registered on waiting list between 07/01/2019 and 06/30/2020**

Waiting list status (survival status)	This Center (N=12)			U.S. (N=1,413)		
	Months Since Listing			Months Since Listing		
	6	12	18	6	12	18
<b>Kidney</b>						
Alive on waiting list (%)	66.7	58.3	41.7	62.1	43.1	29.7
Died on the waiting list without transplant (%)	8.3	8.3	8.3	1.1	2.1	3.8
Removed without transplant (%):						
Condition worsened (status unknown)	0.0	0.0	0.0	0.5	1.1	2.3
Condition improved (status unknown)	0.0	8.3	8.3	0.0	0.1	0.1
Refused transplant (status unknown)	0.0	0.0	0.0	0.1	0.2	0.2
Other	0.0	0.0	8.3	1.2	2.1	4.0
Transplant (living or deceased donor) (%):						
Functioning (alive)	25.0	25.0	33.3	31.2	44.1	38.5
Failed-Retransplanted (alive)	0.0	0.0	0.0	0.0	0.0	0.0
Failed-alive not retransplanted	0.0	0.0	0.0	0.2	0.4	0.4
Died	0.0	0.0	0.0	0.6	1.7	2.1
Status Yet Unknown*	0.0	0.0	0.0	2.8	4.7	18.3
Lost or Transferred (status unknown) (%)	0.0	0.0	0.0	0.1	0.4	0.6
<b>TOTAL (%)</b>	100.0	100.0	100.0	100.0	100.0	100.0
Total % known died on waiting list or after transplant	8.3	8.3	8.3	1.7	3.8	5.9
Total % known died or removed as unstable	8.3	8.3	8.3	2.2	4.8	8.1
Total % removed for transplant	25.0	25.0	33.3	34.8	51.0	59.3
Total % with known functioning transplant (alive)	25.0	25.0	33.3	31.2	44.1	38.5
<b>Pancreas</b>						
Alive on waiting list (%)	66.7	58.3	41.7	62.1	43.1	29.7
Died on the waiting list without transplant (%)	8.3	8.3	8.3	1.1	2.1	3.8
Removed without transplant (%):						
Condition worsened (status unknown)	0.0	0.0	0.0	0.5	1.1	2.3
Condition improved (status unknown)	0.0	8.3	8.3	0.0	0.1	0.1
Refused transplant (status unknown)	0.0	0.0	0.0	0.1	0.2	0.2
Other	0.0	0.0	8.3	1.2	2.1	4.0
Transplant (living or deceased donor) (%):						
Functioning (alive)	16.7	16.7	25.0	27.2	38.1	32.6
Failed-Retransplanted (alive)	0.0	0.0	0.0	0.0	0.0	0.0
Failed-alive not retransplanted	0.0	0.0	0.0	1.7	2.2	1.8
Died	0.0	0.0	0.0	0.6	1.8	2.2
Status Yet Unknown*	8.3	8.3	8.3	5.2	8.8	22.7
Lost or Transferred (status unknown) (%)	0.0	0.0	0.0	0.1	0.4	0.6
<b>TOTAL (%)</b>	100.0	100.0	100.0	100.0	100.0	100.0
Total % known died on waiting list or after transplant	8.3	8.3	8.3	1.7	3.8	5.9
Total % known died or removed as unstable	8.3	8.3	8.3	2.2	4.9	8.2
Total % removed for transplant	25.0	25.0	33.3	34.8	51.0	59.3
Total % with known functioning transplant (alive)	16.7	16.7	25.0	27.2	38.1	32.6

\* Follow-up form covering specified time period not yet completed, and possibly has not become due.



## B. Waiting List Information

**Table B8. Percent of candidates with deceased donor transplants: demographic characteristics**  
Candidates registered on the waiting list between 01/01/2016 and 12/31/2018

Characteristic	Percent transplanted at time periods since listing									
	This Center					United States				
	N	30 day	1 year	2 years	3 years	N	30 day	1 year	2 years	3 years
All	25	8.0	44.0	60.0	72.0	3,646	10.0	47.8	59.5	64.6
Ethnicity/Race*										
White	12	16.7	41.7	50.0	66.7	1,911	9.3	46.2	57.6	63.5
African-American	3	0.0	66.7	66.7	66.7	1,030	11.3	51.6	62.3	66.2
Hispanic/Latino	10	0.0	40.0	70.0	80.0	539	9.6	46.4	60.1	64.7
Asian	0	--	--	--	--	114	10.5	48.2	63.2	64.9
Other	0	--	--	--	--	52	13.5	48.1	57.7	67.3
Unknown	0	--	--	--	--	0	--	--	--	--
Age										
<2 years	0	--	--	--	--	1	100.0	100.0	100.0	100.0
2-11 years	0	--	--	--	--	6	0.0	33.3	33.3	50.0
12-17 years	0	--	--	--	--	5	0.0	40.0	40.0	40.0
18-34 years	4	0.0	25.0	25.0	50.0	897	9.7	48.9	61.3	67.1
35-49 years	21	9.5	47.6	66.7	76.2	1,934	11.1	48.7	59.8	64.8
50-64 years	0	--	--	--	--	783	7.8	44.2	56.8	61.2
65-69 years	0	--	--	--	--	18	5.6	55.6	61.1	66.7
70+ years	0	--	--	--	--	2	0.0	50.0	50.0	50.0
Gender										
Male	17	11.8	47.1	70.6	76.5	2,120	11.1	51.4	62.7	67.7
Female	8	0.0	37.5	37.5	62.5	1,526	8.5	42.8	55.0	60.2

\* Race and ethnicity are reported together as a single data element, reflecting their data collection (either race or ethnicity is required, but not both). Patients formerly coded as white and Hispanic are coded as Hispanic. Race and ethnicity sum to 100%.





## B. Waiting List Information

**Table B9. Percent of candidates with deceased donor transplants: medical characteristics**  
Candidates registered on the waiting list between 01/01/2016 and 12/31/2018

Characteristic	N	Percent transplanted at time periods since listing									
		This Center					United States				
		30 day	1 year	2 years	3 years	N	30 day	1 year	2 years	3 years	
<b>All</b>	25	8.0	44.0	60.0	72.0	3,646	10.0	47.8	59.5	64.6	
<b>Blood Type</b>											
O	13	7.7	30.8	46.2	69.2	1,778	10.6	47.2	59.1	64.5	
A	8	12.5	62.5	87.5	87.5	1,245	10.5	50.1	61.7	66.7	
B	4	0.0	50.0	50.0	50.0	498	6.4	41.8	54.4	58.8	
AB	0	--	--	--	--	125	11.2	56.8	63.2	68.0	
<b>Previous Transplant</b>											
Yes	0	--	--	--	--	192	5.7	24.5	32.3	37.5	
No	25	8.0	44.0	60.0	72.0	3,454	10.2	49.1	61.0	66.1	
<b>Peak PRA/CPRA</b>											
0-9%	21	4.8	42.9	61.9	71.4	2,909	10.7	50.1	61.9	67.0	
10-79%	3	33.3	66.7	66.7	66.7	528	9.3	43.8	55.9	61.4	
80+%	1	0.0	0.0	0.0	100.0	209	2.9	25.8	34.4	38.8	
Unknown	0	--	--	--	--	0	--	--	--	--	
<b>Years Since Diabetes Onset</b>											
0-20	4	0.0	50.0	50.0	50.0	993	11.0	48.3	59.4	65.1	
20-30	13	0.0	38.5	53.8	69.2	1,492	8.9	48.9	60.7	65.8	
30 +	8	25.0	50.0	75.0	87.5	1,003	10.6	45.6	57.6	62.2	
Unknown	0	--	--	--	--	158	10.8	48.7	60.1	64.6	



## B. Waiting List Information

**Table B10. Time to transplant for waiting list candidates\***

**Candidates registered on the waiting list between 01/01/2016 and 06/30/2021**

Percentile	Center	Months to Transplant**		U.S.
		OPO/DSA	Region	
5th	1	0.7	0.6	0.4
10th	1.4	1.3	1.3	0.9
25th	4.2	3.8	4.2	2.9
50th (median time to transplant)	12.9	11.2	13.3	10.7
75th	29.2	Not Observed	Not Observed	Not Observed

\* If cells contain "Not Observed" fewer than that percentile of patients had received a transplant. For example, the 50th percentile of time to transplant is the time when 50% of candidates have received transplants. If waiting times are long, then the 50th percentile may not be observed during the follow-up period for this table. Also, if more than 50% of candidates are removed from the list due to death or other reasons before receiving transplants, then the 50th percentile of time to transplant will not be observed.

\*\* Censored on 12/31/2021. Calculated as the months after listing, during which the corresponding percent of all patients initially listed had received a transplant.



## B. Waiting List Information

**Table B11. Offer Acceptance Practices: 01/01/2021 - 12/31/2021**

Offers Acceptance Characteristics	This Center	OPO/DSA	Region	U.S.
<b>Overall</b>				
Number of Offers	241	307	890	8,962
Number of Acceptances	9	27	111	891
Expected Acceptances	23.2	36.0	98.5	890.5
Offer Acceptance Ratio*	0.44	0.76	1.12	1.00
95% Credible Interval**	[0.22, 0.73]	--	--	--
<b>PHS increased infectious risk</b>				
Number of Offers	46	62	250	2,821
Number of Acceptances	1	5	27	211
Expected Acceptances	4.0	6.1	21.7	211.0
Offer Acceptance Ratio*	0.50	0.86	1.22	1.00
95% Credible Interval**	[0.10, 1.20]	--	--	--
<b>High risk donor</b>				
Number of Offers	0	3	45	1,014
Number of Acceptances	0	1	5	52
Expected Acceptances	0.0	0.4	2.6	54.2
Offer Acceptance Ratio*	--	1.25	1.52	0.96
95% Credible Interval**	[-, -]	--	--	--
<b>Donor BMI &gt; 28</b>				
Number of Offers	25	32	144	1,485
Number of Acceptances	0	0	12	110
Expected Acceptances	3.1	4.3	12.9	108.7
Offer Acceptance Ratio*	0.39	0.32	0.94	1.01
95% Credible Interval**	[0.05, 1.09]	--	--	--
<b>Hard-to-Place Donor (Over 10 Offers)</b>				
Number of Offers	138	158	505	5,091
Number of Acceptances	0	5	16	205
Expected Acceptances	7.6	9.6	21.0	204.9
Offer Acceptance Ratio*	0.21	0.60	0.78	1.00
95% Credible Interval**	[0.03, 0.58]	--	--	--
<b>Donor more than 250 miles away</b>				
Number of Offers	116	127	489	4,662
Number of Acceptances	3	3	25	206
Expected Acceptances	4.7	5.5	19.2	206.5
Offer Acceptance Ratio*	0.74	0.66	1.27	1.00
95% Credible Interval**	[0.24, 1.52]	--	--	--

\* The offer acceptance ratio estimates the relative offer acceptance practice of Loma Linda University Medical Center compared to the national offer acceptance practice. A ratio above one indicates the program is more likely to accept an offer compared to national offer acceptance practices (e.g., an offer acceptance ratio of 1.25 indicates a 25% more likely to accept an offer), while a ratio below one indicates the program is less likely to accept an offer compared to national offer acceptance practices (e.g., an offer acceptance ratio of 0.75 indicates a 25% less likely to accept an offer).

\*\* As an example, the 95% Credible Interval for the overall offer acceptance ratio, [0.22, 0.73], indicates the location of CALL's true offer acceptance ratio with 95% probability. The best estimate is 56% less likely to accept an offer compared to national acceptance behavior, but CALL's performance could plausibly range from 78% reduced acceptance up to 27% reduced acceptance.



## B. Waiting List Information

Figure B10. Offer acceptance: Overall

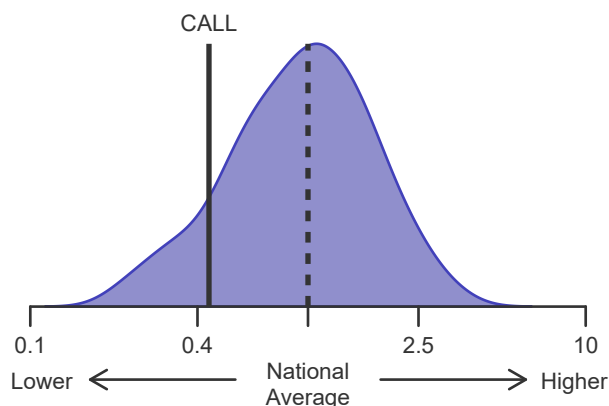


Figure B11. Offer acceptance:  
PHS increased infectious risk

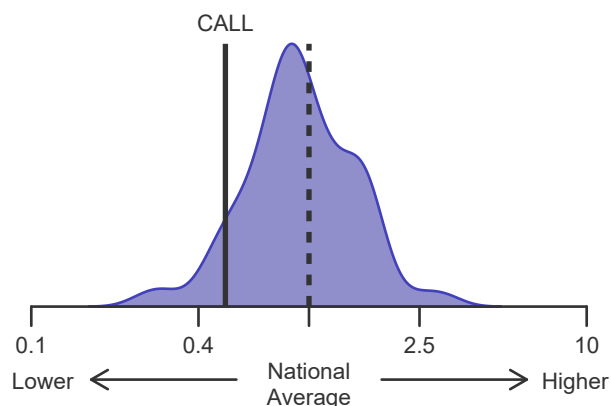


Figure B12. Offer acceptance:  
High risk donor

This program received no offers.

Figure B13. Offer acceptance:  
Donor BMI > 28

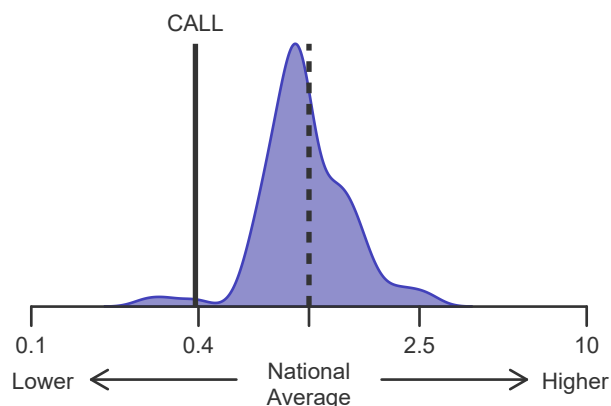


Figure B14. Offer acceptance: Offer number > 10

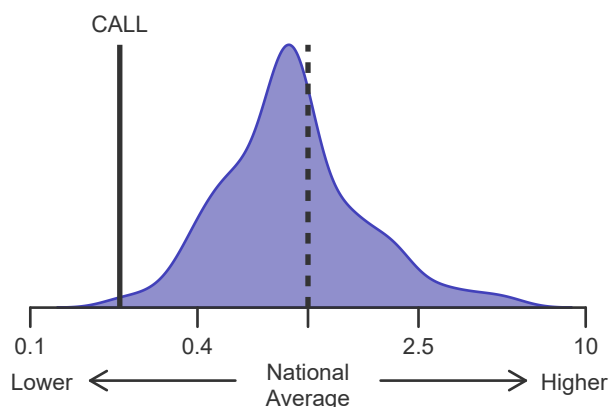
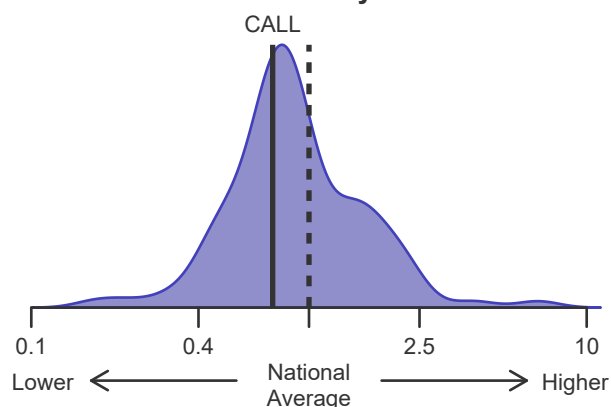


Figure B15. Offer acceptance:  
Donor more than 250 miles away





## C. Transplant Information

**Table C1D. Deceased donor transplant recipient demographic characteristics****Patients transplanted between 01/01/2021 and 12/31/2021**

Characteristic	Percentage in each category		
	Center (N=19)	Region (N=114)	U.S. (N=820)
<b>Ethnicity/Race (%)*</b>			
White	31.6	42.1	44.3
African-American	10.5	14.0	32.2
Hispanic/Latino	42.1	32.5	16.8
Asian	15.8	10.5	5.6
Other	0.0	0.9	1.1
Unknown	0.0	0.0	0.0
<b>Age (%)</b>			
<2 years	0.0	0.0	0.0
2-11 years	0.0	0.9	0.1
12-17	0.0	0.0	0.0
18-34	15.8	19.3	21.3
35-49 years	63.2	62.3	49.8
50-64 years	21.1	17.5	28.4
65-69 years	0.0	0.0	0.4
70+ years	0.0	0.0	0.0
<b>Gender (%)</b>			
Male	42.1	65.8	61.5
Female	57.9	34.2	38.5

\* Race and ethnicity are reported together as a single data element, reflecting their data collection (either race or ethnicity is required, but not both). Patients formerly coded as white and Hispanic are coded as Hispanic. Race and ethnicity sum to 100%.



## C. Transplant Information

**Table C2D. Deceased donor transplant recipient medical characteristics**

**Patients transplanted between 01/01/2021 and 12/31/2021**

Characteristic	Percentage in each category		
	Center (N=19)	Region (N=114)	U.S. (N=820)
<b>Blood Type (%)</b>			
O	63.2	60.5	50.2
A	31.6	25.4	32.8
B	5.3	10.5	13.3
AB	0.0	3.5	3.7
<b>Previous Transplant (%)</b>			
Yes	0.0	0.9	2.8
No	100.0	99.1	97.2
<b>Peak PRA/CPRA Prior to Transplant (%)</b>			
0-9%	84.2	82.5	73.4
10-79%	10.5	14.9	19.8
80+ %	5.3	2.6	6.8
Unknown	0.0	0.0	0.0
<b>Body Mass Index (%)</b>			
0-20	10.5	11.4	9.8
21-25	31.6	40.4	36.3
26-30	57.9	41.2	38.5
31-35	0.0	6.1	11.7
36-40	0.0	0.0	1.3
41+	0.0	0.0	0.0
Unknown	0.0	0.9	2.3



## C. Transplant Information

**Table C3D. Deceased donor characteristics**

Transplants performed between 01/01/2021 and 12/31/2021

Donor Characteristic	Percentage in each category		
	Center (N=19)	Region (N=114)	U.S. (N=820)
<b>Cause of Death (%)</b>			
Deceased: Stroke	0.0	6.1	9.6
Deceased: MVA	36.8	24.6	22.8
Deceased: Other	63.2	69.3	67.6
<b>Ethnicity/Race (%)*</b>			
White	36.8	45.6	58.5
African-American	21.1	13.2	20.9
Hispanic/Latino	26.3	34.2	16.7
Asian	5.3	3.5	2.4
Other	10.5	3.5	1.5
Not Reported	0.0	0.0	0.0
<b>Age (%)</b>			
<2 years	0.0	0.0	0.0
2-11 years	5.3	3.5	3.3
12-17	31.6	17.5	14.6
18-34	63.2	69.3	68.9
35-49 years	0.0	9.6	12.7
50-64 years	0.0	0.0	0.5
65-69 years	0.0	0.0	0.0
70+ years	0.0	0.0	0.0
<b>Gender (%)</b>			
Male	68.4	72.8	69.8
Female	31.6	27.2	30.2
<b>Blood Type (%)</b>			
O	63.2	60.5	50.5
A	31.6	28.9	34.4
B	5.3	10.5	13.2
AB	0.0	0.0	2.0
Unknown	0.0	0.0	0.0

\* Race and ethnicity are reported together as a single data element, reflecting their data collection (either race or ethnicity is required, but not both). Patients formerly coded as white and Hispanic are coded as Hispanic. Race and ethnicity sum to 100%.





## C. Transplant Information

**Table C4D. Deceased donor transplant characteristics**  
Transplants performed between 01/01/2021 and 12/31/2021

Transplant Characteristic	Percentage in each category		
	Center (N=19)	Region (N=114)	U.S. (N=820)
<b>Cold Ischemic Time (Hours): Local (%)</b>			
Deceased: 0-11 hr	54.5	70.9	75.8
Deceased: 12-21 hr	45.5	27.8	20.2
Deceased: 22-31 hr	0.0	0.0	0.3
Deceased: 32-41 hr	0.0	0.0	0.3
Deceased: 42+ hr	0.0	0.0	0.3
Not Reported	0.0	1.3	3.3
<b>Cold Ischemic Time (Hours): Shared (%)</b>			
Deceased: 0-11 hr	37.5	57.1	45.6
Deceased: 12-21 hr	62.5	40.0	47.2
Deceased: 22-31 hr	0.0	0.0	3.5
Deceased: 32-41 hr	0.0	0.0	0.0
Deceased: 42+ hr	0.0	0.0	0.2
Not Reported	0.0	2.9	3.5
<b>Level of Mismatch (%)</b>			
A Locus Mismatches (%)			
0	0.0	7.0	6.2
1	42.1	48.2	42.7
2	57.9	44.7	51.1
Not Reported	0.0	0.0	0.0
B Locus Mismatches (%)			
0	0.0	0.9	2.2
1	26.3	18.4	25.4
2	73.7	80.7	72.4
Not Reported	0.0	0.0	0.0
DR Locus Mismatches (%)			
0	15.8	7.9	6.8
1	36.8	35.1	37.9
2	47.4	57.0	55.2
Not Reported	0.0	0.0	0.0
Total Mismatches (%)			
0	0.0	0.0	0.2
1	0.0	0.0	0.6
2	0.0	2.6	3.4
3	15.8	8.8	10.4
4	15.8	25.4	24.8
5	57.9	45.6	37.7
6	10.5	17.5	22.9
Not Reported	0.0	0.0	0.0
<b>Dialysis in First Week After Transplant (%)</b>			
Yes	0.0	10.5	10.0
No	100.0	88.6	87.7
Not Reported	0.0	0.9	2.3
<b>Donor Location (%)</b>			
Local Donation Service Area (DSA)	57.9	69.3	47.8
Another Donation Service Area (DSA)	42.1	30.7	52.2
<b>Median Time in Hospital After Transplant</b>	7.0 Days	7.0 Days	8.0 Days



## C. Transplant Information

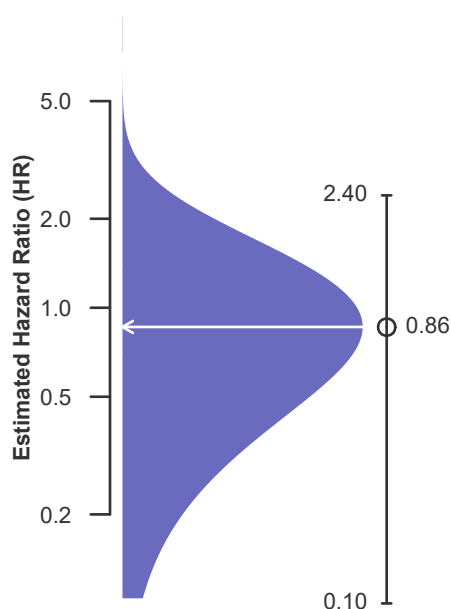
**Table C5DKI. Adult (18+) 1-month survival with a functioning deceased donor kidney graft**  
SPK transplants performed between 01/01/2019 and 03/12/2020, and 06/13/2020 and 06/30/2021  
Deaths and retransplants are considered graft failures  
Follow-up ends on 3/12/2020 for recipients transplanted prior to 3/13/2020

	CALL	U.S.
Number of transplants evaluated	20	1,966
Estimated probability of surviving with a functioning graft at 1 month (unadjusted for patient and donor characteristics)	100.00%	98.66%
Expected probability of surviving with a functioning graft at 1 month (adjusted for patient and donor characteristics)	98.40%	--
Number of observed graft failures (including deaths) during the first month after transplant	0	27
Number of expected graft failures (including deaths) during the first month after transplant	0.32	26
Estimated hazard ratio*	0.86	1.02
95% credible interval for the hazard ratio**	[0.10, 2.40]	--

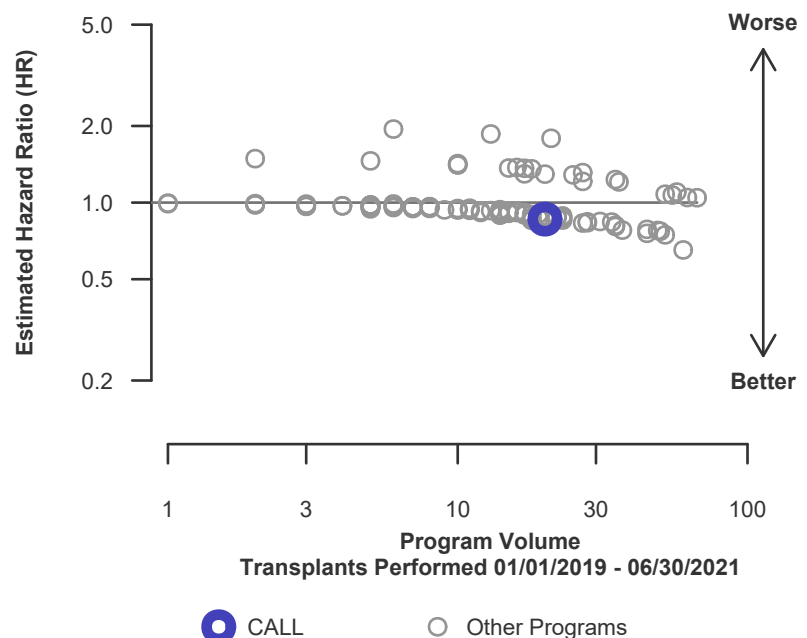
\* The hazard ratio provides an estimate of how Loma Linda University Medical Center's results compare with what was expected based on modeling the transplant outcomes from all U.S. programs. A ratio above 1 indicates higher than expected graft failure rates (e.g., a hazard ratio of 1.5 would indicate 50% higher risk), and a ratio below 1 indicates lower than expected graft failure rates (e.g., a hazard ratio of 0.75 would indicate 25% lower risk). If CALL's graft failure rate were precisely the expected rate, the estimated hazard ratio would be 1.0.

\*\* The 95% credible interval, [0.10, 2.40], indicates the location of CALL's true hazard ratio with 95% probability. The best estimate is 14% lower risk of kidney graft failure compared to an average program, but CALL's performance could plausibly range from 90% reduced risk up to 140% increased risk.

**Figure C1DKI. Adult (18+) 1-month deceased donor kidney graft failure HR estimate**



**Figure C2DKI. Adult (18+) 1-month deceased donor kidney graft failure HR program comparison**





## C. Transplant Information

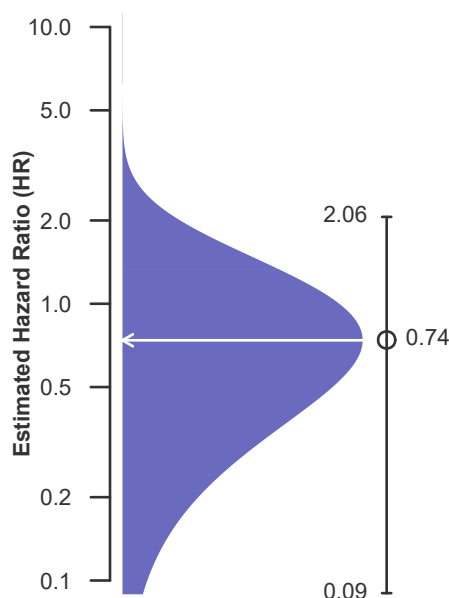
**Table C6DKI. Adult (18+) 1-year survival with a functioning deceased donor kidney graft**  
SPK transplants performed between 01/01/2019 and 03/12/2020, and 06/13/2020 and 06/30/2021  
Deaths and retransplants are considered graft failures  
Follow-up ends on 3/12/2020 for recipients transplanted prior to 3/13/2020

	CALL	U.S.
Number of transplants evaluated	20	1,966
Estimated probability of surviving with a functioning graft at 1 year (unadjusted for patient and donor characteristics)	100.00%	96.07%
Expected probability of surviving with a functioning graft at 1 year (adjusted for patient and donor characteristics)	95.33%	--
Number of observed graft failures (including deaths) during the first year after transplant	0	62
Number of expected graft failures (including deaths) during the first year after transplant	0.71	62
Estimated hazard ratio*	0.74	1.00
95% credible interval for the hazard ratio**	[0.09, 2.06]	--

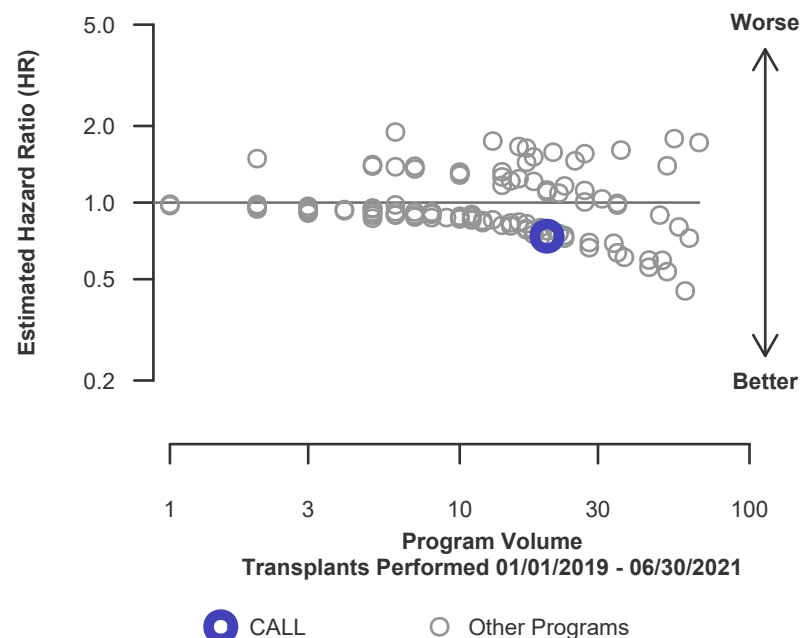
\* The hazard ratio provides an estimate of how Loma Linda University Medical Center's results compare with what was expected based on modeling the transplant outcomes from all U.S. programs. A ratio above 1 indicates higher than expected graft failure rates (e.g., a hazard ratio of 1.5 would indicate 50% higher risk), and a ratio below 1 indicates lower than expected graft failure rates (e.g., a hazard ratio of 0.75 would indicate 25% lower risk). If CALL's graft failure rate were precisely the expected rate, the estimated hazard ratio would be 1.0.

\*\* The 95% credible interval, [0.09, 2.06], indicates the location of CALL's true hazard ratio with 95% probability. The best estimate is 26% lower risk of kidney graft failure compared to an average program, but CALL's performance could plausibly range from 91% reduced risk up to 106% increased risk.

**Figure C3DKI. Adult (18+) 1-year deceased donor kidney graft failure HR estimate**



**Figure C4DKI. Adult (18+) 1-year deceased donor kidney graft failure HR program comparison**





## C. Transplant Information

**Table C7DKI. Adult (18+) 3-year survival with a functioning deceased donor kidney graft**

SPK transplants performed between 07/01/2016 and 12/31/2018

Deaths and retransplants are considered graft failures

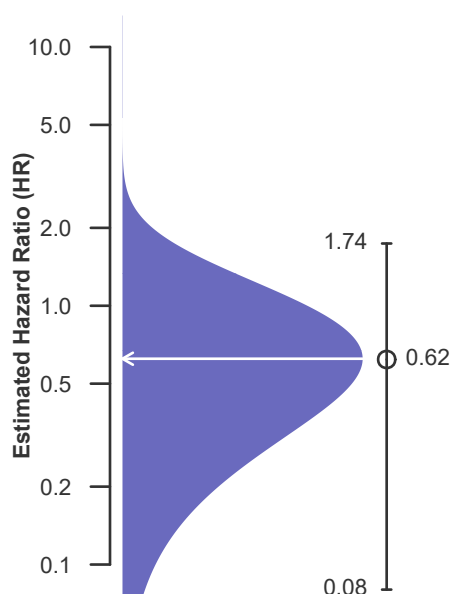
Follow-up ends on 3/12/2020 for recipients transplanted prior to 3/13/2020

	CALL	U.S.
Number of transplants evaluated	19	2,007
Estimated probability of surviving with a functioning graft at 3 years (unadjusted for patient and donor characteristics)	100.00%	92.25%
Expected probability of surviving with a functioning graft at 3 years (adjusted for patient and donor characteristics)	91.85%	--
Number of observed graft failures (including deaths) during the first 3 years after transplant	0	122
Number of expected graft failures (including deaths) during the first 3 years after transplant	1.20	122
Estimated hazard ratio*	0.62	1.00
95% credible interval for the hazard ratio**	[0.08, 1.74]	--

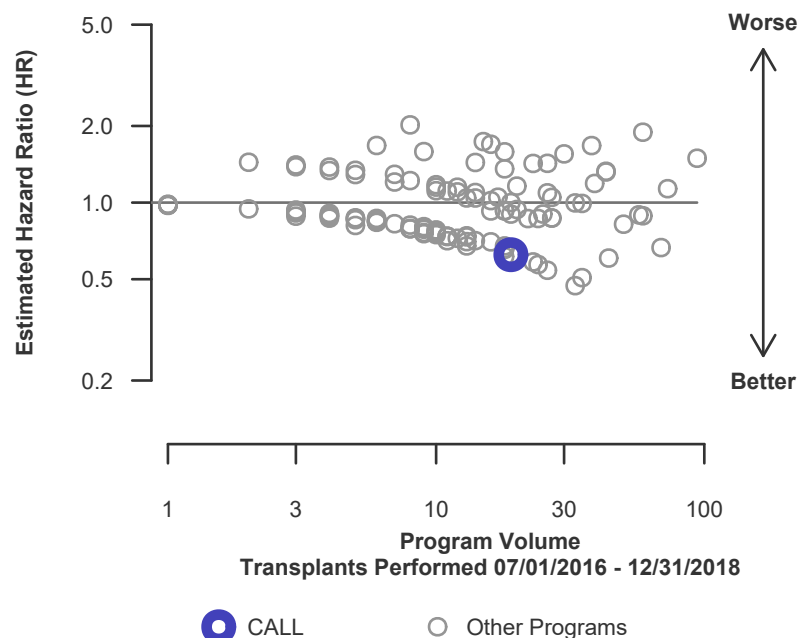
\* The hazard ratio provides an estimate of how Loma Linda University Medical Center's results compare with what was expected based on modeling the transplant outcomes from all U.S. programs. A ratio above 1 indicates higher than expected graft failure rates (e.g., a hazard ratio of 1.5 would indicate 50% higher risk), and a ratio below 1 indicates lower than expected graft failure rates (e.g., a hazard ratio of 0.75 would indicate 25% lower risk). If CALL's graft failure rate were precisely the expected rate, the estimated hazard ratio would be 1.0.

\*\* The 95% credible interval, [0.08, 1.74], indicates the location of CALL's true hazard ratio with 95% probability. The best estimate is 38% lower risk of kidney graft failure compared to an average program, but CALL's performance could plausibly range from 92% reduced risk up to 74% increased risk.

**Figure C5DKI. Adult (18+) 3-year deceased donor kidney graft failure HR estimate**



**Figure C6DKI. Adult (18+) 3-year deceased donor kidney graft failure HR program comparison**





## C. Transplant Information

### Table C8DKI. Pediatric (<18) 1-month survival with a functioning deceased donor kidney graft

SPK transplants performed between 01/01/2019 and 03/12/2020, and 06/13/2020 and 06/30/2021

Deaths and retransplants are considered graft failures

Follow-up ends on 3/12/2020 for recipients transplanted prior to 3/13/2020

This center did not perform any  
transplants relevant to  
this table during  
01/01/2019-06/30/2021

### Figure C7DKI. Pediatric (<18) 1-month deceased donor kidney graft failure HR estimate

This center did not perform any  
transplants relevant to  
this figure during  
01/01/2019-06/30/2021

### Figure C8DKI. Pediatric (<18) 1-month deceased donor kidney graft failure HR program comparison

This center did not perform any  
transplants relevant to  
this figure during  
01/01/2019-06/30/2021



## C. Transplant Information

### Table C9DKI. Pediatric (<18) 1-year survival with a functioning deceased donor kidney graft

SPK transplants performed between 01/01/2019 and 03/12/2020, and 06/13/2020 and 06/30/2021

Deaths and retransplants are considered graft failures

Follow-up ends on 3/12/2020 for recipients transplanted prior to 3/13/2020

This center did not perform any  
transplants relevant to  
this table during  
01/01/2019-06/30/2021

### Figure C9DKI. Pediatric (<18) 1-year deceased donor kidney graft failure HR estimate

This center did not perform any  
transplants relevant to  
this figure during  
01/01/2019-06/30/2021

### Figure C10DKI. Pediatric (<18) 1-year deceased donor kidney graft failure HR program comparison

This center did not perform any  
transplants relevant to  
this figure during  
01/01/2019-06/30/2021



## C. Transplant Information

### Table C10DKI. Pediatric (<18) 3-year survival with a functioning deceased donor kidney graft

SPK transplants performed between 07/01/2016 and 12/31/2018

Deaths and retransplants are considered graft failures

Follow-up ends on 3/12/2020 for recipients transplanted prior to 3/13/2020

This center did not perform any  
transplants relevant to  
this table during  
07/01/2016-12/31/2018

### Figure C11DKI. Pediatric (<18) 3-year deceased donor kidney graft failure HR estimate

This center did not perform any  
transplants relevant to  
this figure during  
07/01/2016-12/31/2018

### Figure C12DKI. Pediatric (<18) 3-year deceased donor kidney graft failure HR program comparison

This center did not perform any  
transplants relevant to  
this figure during  
07/01/2016-12/31/2018





## C. Transplant Information

**Table C11D. Adult (18+) 1-month patient survival (deceased donor graft recipients)**

SPK transplants performed between 01/01/2019 and 03/12/2020, and 06/13/2020 and 06/30/2021

Retransplants excluded

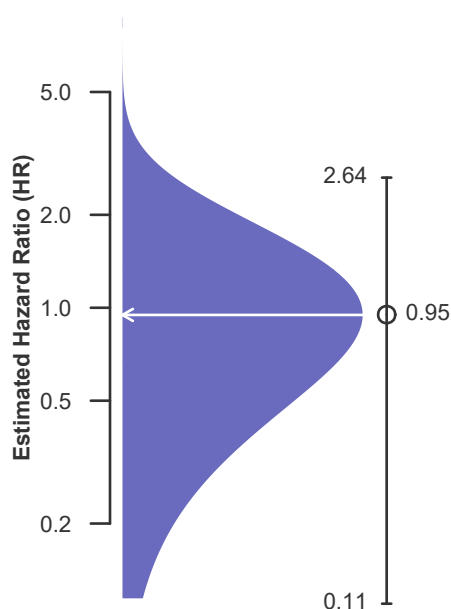
Follow-up ends on 3/12/2020 for recipients transplanted prior to 3/13/2020

	CALL	U.S.
Number of transplants evaluated	20	1,949
Estimated probability of surviving at 1 month (unadjusted for patient and donor characteristics)	100.00%	99.27%
Expected probability of surviving at 1 month (adjusted for patient and donor characteristics)	99.41%	--
Number of observed deaths during the first month after transplant	0	14
Number of expected deaths during the first month after transplant	0.11	14
Estimated hazard ratio*	0.95	1.00
95% credible interval for the hazard ratio**	[0.11, 2.64]	--

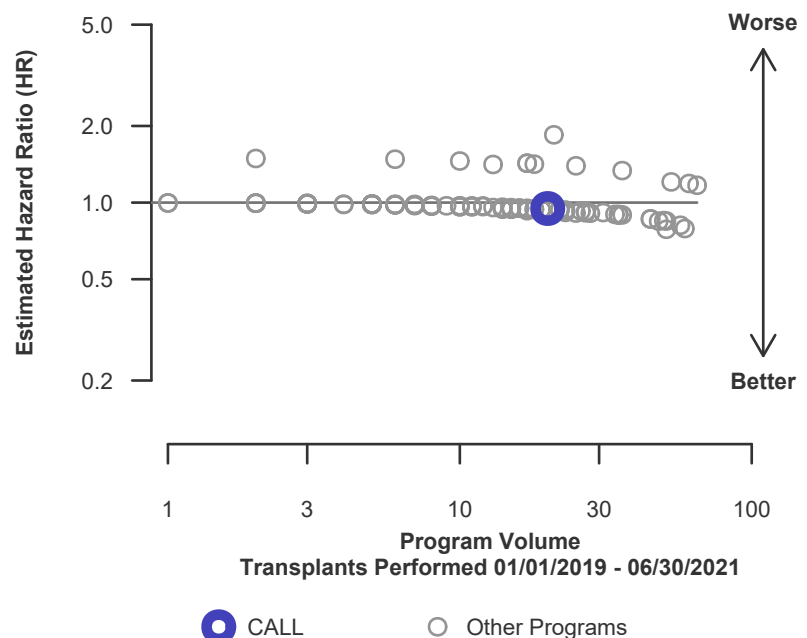
\* The hazard ratio provides an estimate of how Loma Linda University Medical Center's results compare with what was expected based on modeling the transplant outcomes from all U.S. programs. A ratio above 1 indicates higher than expected patient death rates (e.g., a hazard ratio of 1.5 would indicate 50% higher risk), and a ratio below 1 indicates lower than expected patient death rates (e.g., a hazard ratio of 0.75 would indicate 25% lower risk). If CALL's patient death rate were precisely the expected rate, the estimated hazard ratio would be 1.0.

\*\* The 95% credible interval, [0.11, 2.64], indicates the location of CALL's true hazard ratio with 95% probability. The best estimate is 5% lower risk of patient death compared to an average program, but CALL's performance could plausibly range from 89% reduced risk up to 164% increased risk.

**Figure C13D. Adult (18+) 1-month patient death HR estimate (deceased donor grafts)**



**Figure C14D. Adult (18+) 1-month patient death HR program comparison (deceased donor grafts)**





## C. Transplant Information

**Table C12D. Adult (18+) 90-Day patient survival (deceased donor graft recipients)**

SPK transplants performed between 01/01/2019 and 03/12/2020, and 06/13/2020 and 06/30/2021

Retransplants excluded

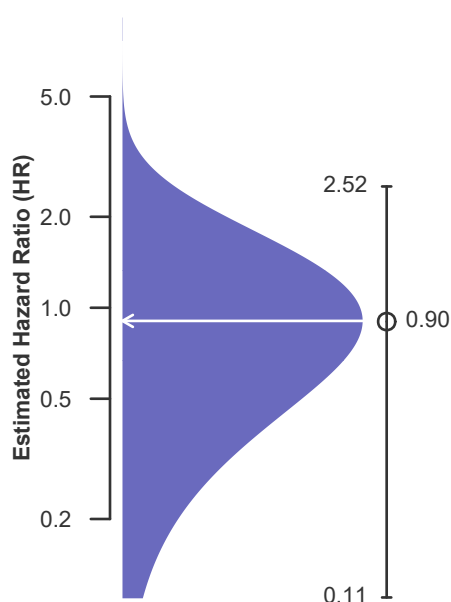
Follow-up ends on 3/12/2020 for recipients transplanted prior to 3/13/2020

	CALL	U.S.
Number of transplants evaluated	20	1,949
Estimated probability of surviving at 90 days (unadjusted for patient and donor characteristics)	100.00%	98.56%
Expected probability of surviving at 90 days (adjusted for patient and donor characteristics)	98.82%	--
Number of observed deaths during the first 90 days after transplant	0	27
Number of expected deaths during the first 90 days after transplant	0.21	27
Estimated hazard ratio*	0.90	1.00
95% credible interval for the hazard ratio**	[0.11, 2.52]	--

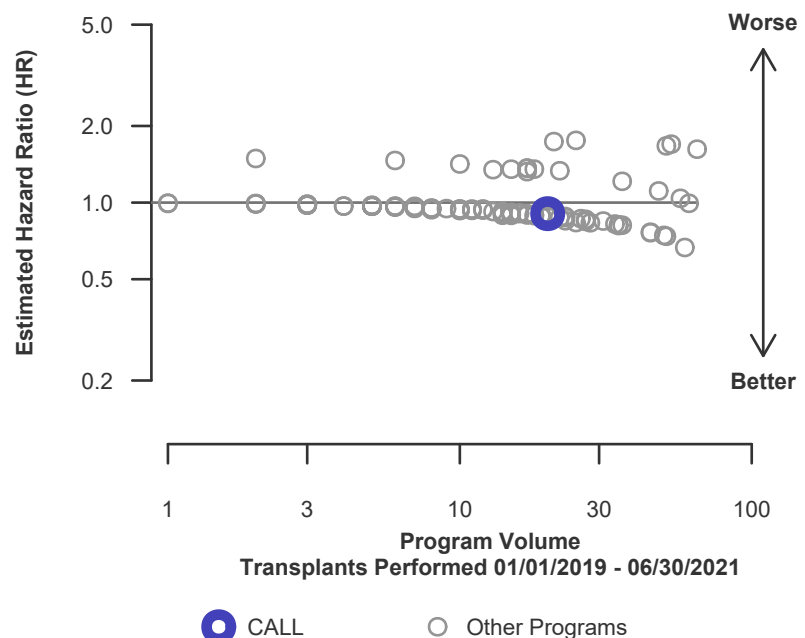
\* The hazard ratio provides an estimate of how Loma Linda University Medical Center's results compare with what was expected based on modeling the transplant outcomes from all U.S. programs. A ratio above 1 indicates higher than expected patient death rates (e.g., a hazard ratio of 1.5 would indicate 50% higher risk), and a ratio below 1 indicates lower than expected patient death rates (e.g., a hazard ratio of 0.75 would indicate 25% lower risk). If CALL's patient death rate were precisely the expected rate, the estimated hazard ratio would be 1.0.

\*\* The 95% credible interval, [0.11, 2.52], indicates the location of CALL's true hazard ratio with 95% probability. The best estimate is 10% lower risk of patient death compared to an average program, but CALL's performance could plausibly range from 89% reduced risk up to 152% increased risk.

**Figure C15D. Adult (18+) 90-Day patient death HR estimate (deceased donor grafts)**



**Figure C16D. Adult (18+) 90-Day patient death HR program comparison (deceased donor grafts)**





## C. Transplant Information

**Table C13D. Adult (18+) 1-year patient survival (deceased donor graft recipients)**

SPK transplants performed between 01/01/2019 and 03/12/2020, and 06/13/2020 and 06/30/2021

Retransplants excluded

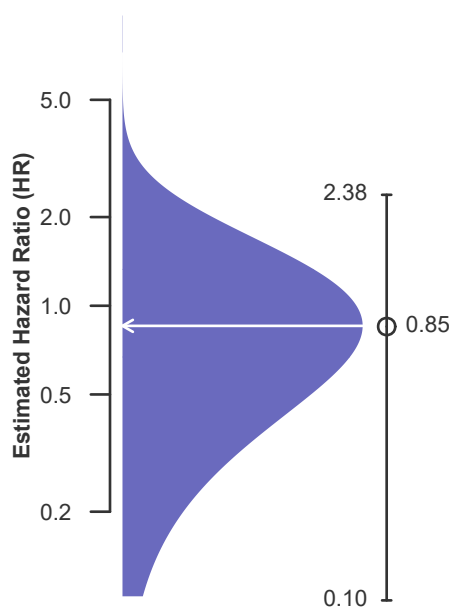
Follow-up ends on 3/12/2020 for recipients transplanted prior to 3/13/2020

	CALL	U.S.
Number of transplants evaluated	20	1,949
Estimated probability of surviving at 1 year (unadjusted for patient and donor characteristics)	100.00%	97.14%
Expected probability of surviving at 1 year (adjusted for patient and donor characteristics)	97.65%	--
Number of observed deaths during the first year after transplant	0	42
Number of expected deaths during the first year after transplant	0.34	42
Estimated hazard ratio*	0.85	1.00
95% credible interval for the hazard ratio**	[0.10, 2.38]	--

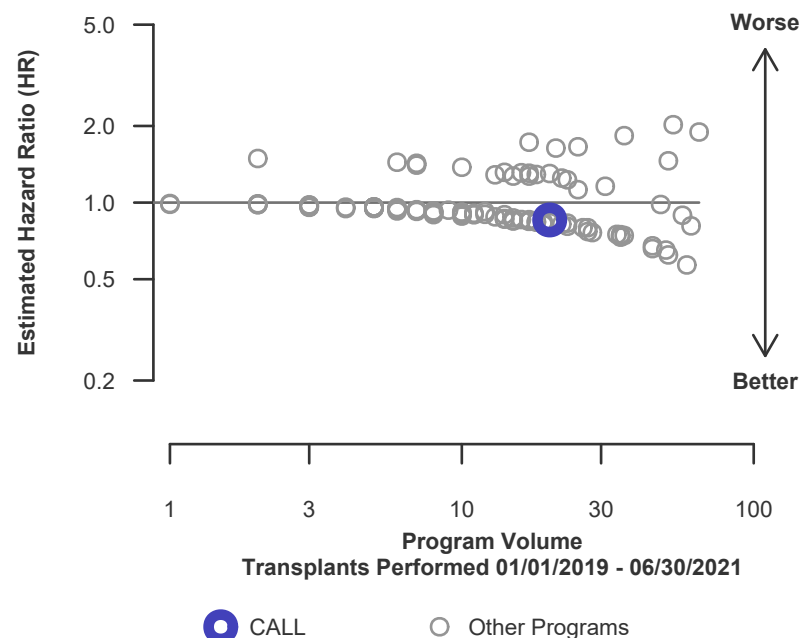
\* The hazard ratio provides an estimate of how Loma Linda University Medical Center's results compare with what was expected based on modeling the transplant outcomes from all U.S. programs. A ratio above 1 indicates higher than expected patient death rates (e.g., a hazard ratio of 1.5 would indicate 50% higher risk), and a ratio below 1 indicates lower than expected patient death rates (e.g., a hazard ratio of 0.75 would indicate 25% lower risk). If CALL's patient death rate were precisely the expected rate, the estimated hazard ratio would be 1.0.

\*\* The 95% credible interval, [0.10, 2.38], indicates the location of CALL's true hazard ratio with 95% probability. The best estimate is 15% lower risk of patient death compared to an average program, but CALL's performance could plausibly range from 90% reduced risk up to 138% increased risk.

**Figure C17D. Adult (18+) 1-year patient death HR estimate (deceased donor grafts)**



**Figure C18D. Adult (18+) 1-year patient death HR program comparison (deceased donor grafts)**





## C. Transplant Information

**Table C14D. Adult (18+) 1-year Conditional patient survival (deceased donor graft recipients)**

SPK transplants performed between 01/01/2019 and 03/12/2020, and 06/13/2020 and 06/30/2021

Retransplants excluded

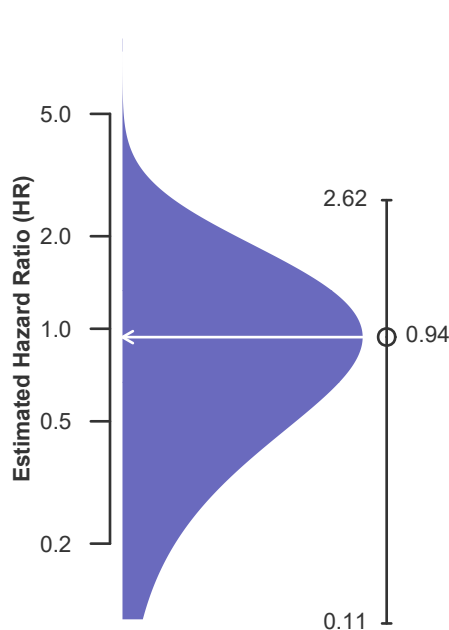
Follow-up ends on 3/12/2020 for recipients transplanted prior to 3/13/2020

	CALL	U.S.
Number of transplants evaluated	17	1,732
Estimated probability of surviving at 1 year, among patients alive at day 90 (unadjusted for patient and donor characteristics)	100.00%	98.56%
Expected probability of surviving at 1 year, among patients alive at day 90 (adjusted for patient and donor characteristics)	98.81%	--
Number of observed deaths from day 91 through day 365 after transplant	0	15
Number of expected deaths from day 91 through day 365 after transplant	0.13	15
Estimated hazard ratio*	0.94	1.00
95% credible interval for the hazard ratio**	[0.11, 2.62]	--

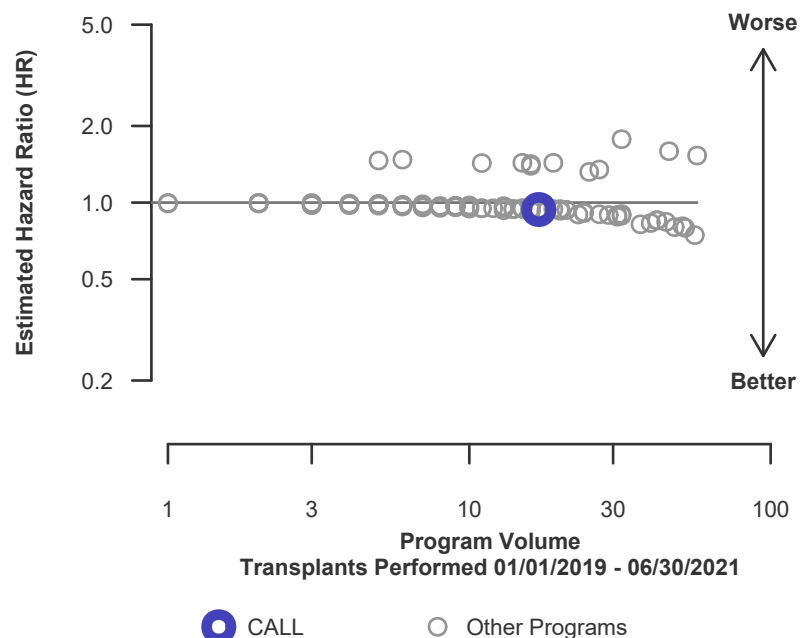
\* The hazard ratio provides an estimate of how Loma Linda University Medical Center's results compare with what was expected based on modeling the transplant outcomes from all U.S. programs. A ratio above 1 indicates higher than expected patient death rates (e.g., a hazard ratio of 1.5 would indicate 50% higher risk), and a ratio below 1 indicates lower than expected patient death rates (e.g., a hazard ratio of 0.75 would indicate 25% lower risk). If CALL's patient death rate were precisely the expected rate, the estimated hazard ratio would be 1.0.

\*\* The 95% credible interval, [0.11, 2.62], indicates the location of CALL's true hazard ratio with 95% probability. The best estimate is 6% lower risk of patient death compared to an average program, but CALL's performance could plausibly range from 89% reduced risk up to 162% increased risk.

**Figure C19D. Adult (18+) 1-year Conditional patient death HR estimate (deceased donor grafts)**



**Figure C20D. Adult (18+) 1-year Conditional patient death HR program comparison (deceased donor grafts)**





## C. Transplant Information

**Table C15D. Adult (18+) 3-year patient survival (deceased donor graft recipients)**

SPK transplants performed between 07/01/2016 and 12/31/2018

Retransplants excluded

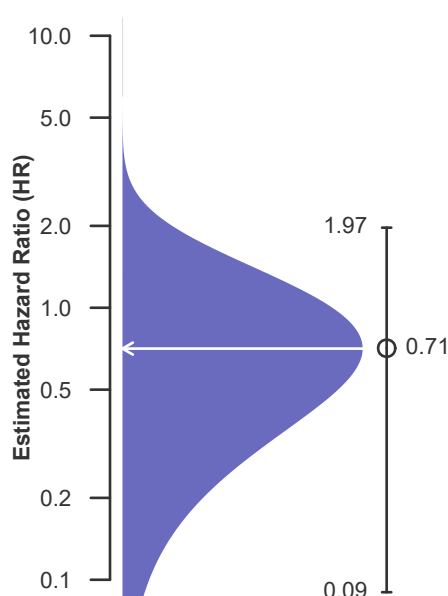
Follow-up ends on 3/12/2020 for recipients transplanted prior to 3/13/2020

	CALL	U.S.
Number of transplants evaluated	19	1,986
Estimated probability of surviving at 3 years (unadjusted for patient and donor characteristics)	100.00%	95.67%
Expected probability of surviving at 3 years (adjusted for patient and donor characteristics)	94.47%	--
Number of observed deaths during the first 3 years after transplant	0	68
Number of expected deaths during the first 3 years after transplant	0.83	68
Estimated hazard ratio*	0.71	1.00
95% credible interval for the hazard ratio**	[0.09, 1.97]	--

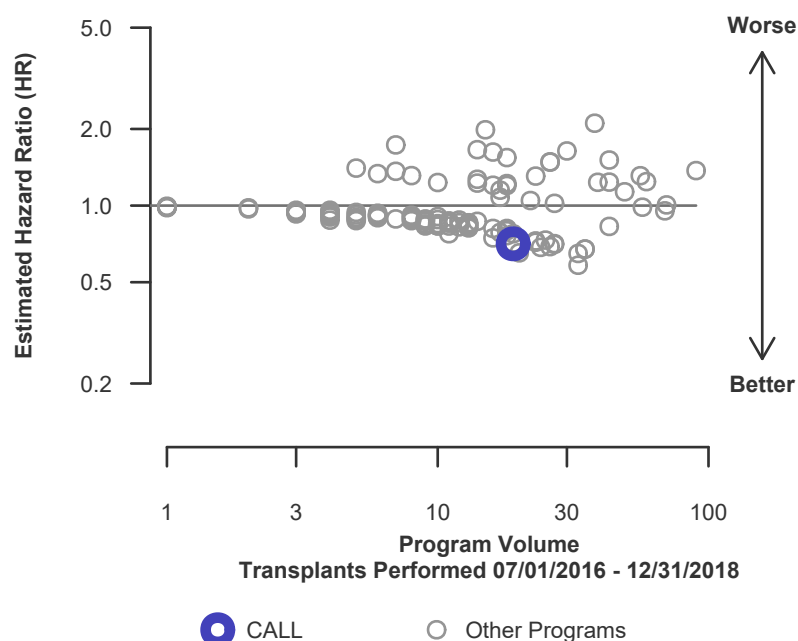
\* The hazard ratio provides an estimate of how Loma Linda University Medical Center's results compare with what was expected based on modeling the transplant outcomes from all U.S. programs. A ratio above 1 indicates higher than expected patient death rates (e.g., a hazard ratio of 1.5 would indicate 50% higher risk), and a ratio below 1 indicates lower than expected patient death rates (e.g., a hazard ratio of 0.75 would indicate 25% lower risk). If CALL's patient death rate were precisely the expected rate, the estimated hazard ratio would be 1.0.

\*\* The 95% credible interval, [0.09, 1.97], indicates the location of CALL's true hazard ratio with 95% probability. The best estimate is 29% lower risk of patient death compared to an average program, but CALL's performance could plausibly range from 91% reduced risk up to 97% increased risk.

**Figure C21D. Adult (18+) 3-year patient death HR estimate (deceased donor grafts)**



**Figure C22D. Adult (18+) 3-year patient death HR program comparison (deceased donor grafts)**





## C. Transplant Information

### Table C16D. Pediatric (<18) 1-month patient survival (deceased donor graft recipients)

SPK transplants performed between 01/01/2019 and 03/12/2020, and 06/13/2020 and 06/30/2021

Retransplants excluded

Follow-up ends on 3/12/2020 for recipients transplanted prior to 3/13/2020

This center did not perform any  
transplants relevant to  
this table during  
01/01/2019-06/30/2021

### Figure C23D. Pediatric (<18) 1-month patient death HR estimate (deceased donor grafts)

This center did not perform any  
transplants relevant to  
this figure during  
01/01/2019-06/30/2021

### Figure C24D. Pediatric (<18) 1-month patient death HR program comparison (deceased donor grafts)

This center did not perform any  
transplants relevant to  
this figure during  
01/01/2019-06/30/2021



## C. Transplant Information

**Table C17D. Pediatric (<18) 90-Day patient survival (deceased donor graft recipients)**  
SPK transplants performed between 01/01/2019 and 03/12/2020, and 06/13/2020 and 06/30/2021  
Retransplants excluded  
Follow-up ends on 3/12/2020 for recipients transplanted prior to 3/13/2020

This center did not perform any  
transplants relevant to  
this table during  
01/01/2019-06/30/2021

**Figure C25D. Pediatric (<18)  
90-Day patient death HR estimate  
(deceased donor grafts)**

This center did not perform any  
transplants relevant to  
this figure during  
01/01/2019-06/30/2021

**Figure C26D. Pediatric (<18) 90-Day patient death HR  
program comparison (deceased donor grafts)**

This center did not perform any  
transplants relevant to  
this figure during  
01/01/2019-06/30/2021



## C. Transplant Information

### Table C18D. Pediatric (<18) 1-year patient survival (deceased donor graft recipients)

SPK transplants performed between 01/01/2019 and 03/12/2020, and 06/13/2020 and 06/30/2021

Retransplants excluded

Follow-up ends on 3/12/2020 for recipients transplanted prior to 3/13/2020

This center did not perform any  
transplants relevant to  
this table during  
01/01/2019-06/30/2021

### Figure C27D. Pediatric (<18) 1-year patient death HR estimate (deceased donor grafts)

This center did not perform any  
transplants relevant to  
this figure during  
01/01/2019-06/30/2021

### Figure C28D. Pediatric (<18) 1-year patient death HR program comparison (deceased donor grafts)

This center did not perform any  
transplants relevant to  
this figure during  
01/01/2019-06/30/2021





## C. Transplant Information

### Table C19D. Pediatric (<18) 1-year Conditional patient survival (deceased donor graft recipients)

SPK transplants performed between 01/01/2019 and 03/12/2020, and 06/13/2020 and 06/30/2021

Retransplants excluded

Follow-up ends on 3/12/2020 for recipients transplanted prior to 3/13/2020

This center did not perform any  
transplants relevant to  
this table during  
01/01/2019-06/30/2021

### Figure C29D. Pediatric (<18) 1-year Conditional patient death HR estimate (deceased donor grafts)

This center did not perform any  
transplants relevant to  
this figure during  
01/01/2019-06/30/2021

### Figure C30D. Pediatric (<18) 1-year Conditional patient death HR program comparison (deceased donor grafts)

This center did not perform any  
transplants relevant to  
this figure during  
01/01/2019-06/30/2021



## C. Transplant Information

### Table C20D. Pediatric (<18) 3-year patient survival (deceased donor graft recipients)

SPK transplants performed between 07/01/2016 and 12/31/2018

Retransplants excluded

Follow-up ends on 3/12/2020 for recipients transplanted prior to 3/13/2020

This center did not perform any  
transplants relevant to  
this table during  
07/01/2016-12/31/2018

### Figure C31D. Pediatric (<18) 3-year patient death HR estimate (deceased donor grafts)

This center did not perform any  
transplants relevant to  
this figure during  
07/01/2016-12/31/2018

### Figure C32D. Pediatric (<18) 3-year patient death HR program comparison (deceased donor grafts)

This center did not perform any  
transplants relevant to  
this figure during  
07/01/2016-12/31/2018