



---

## COVID-19 Guide

---

### Adjustments to Transplant Program and OPO Evaluation Metrics

The Scientific Registry of Transplant Recipients (SRTR), under contract from the Health Resources and Services Administration (HRSA), is charged with evaluating the performance of the nation's transplant system through publication of semi-annual transplant program-specific reports (PSRs) and organ procurement organization (OPO)-specific reports (OSRs). These reports contain performance metrics covering various time periods. For OPOs, these metrics include deceased donor organ yield. For transplant programs, they include pre-transplant mortality rates (formerly called waitlist mortality rates), transplant rates, organ offer acceptance rates, patient mortality after listing, and 1-month, 90-day, 1-year, 1-year conditional on 90-day, and 3-year posttransplant outcomes including graft survival and patient survival.

In response to the current global pandemic, SRTR modified the evaluation metrics for transplant programs and OPOs for the reports released in January 2021, July 2021, January 2022, July 2022, January 2023, July 2023, January 2024 and July 2024. These reports made adjustments to transplant program and OPO performance metrics so that data during the time around the declaration of a national public health emergency on March 13, 2020, were not included in the metrics.

Modifications for the January 2025 reporting cycle were considered at the Analytic Methods Subcommittee of the SRTR Review Committee (SRC) at its meeting on March 24, 2021, and the full SRC meetings April 27, 2021 and on January 11, 2022. Both the Analytic Methods Subcommittee and the full SRC recommended an ongoing carve out of the first quarter of the pandemic (March 13, 2020 through June 12, 2020) from adjusted performance metrics, as detailed below. These recommendations were reviewed by HRSA's Division of Transplantation, which oversees SRTR. HRSA approved these recommendations, which SRTR will implement for the January 2025 reporting cycle. These changes will remain in force beyond the January 2025 reporting cycle, unless otherwise amended:

Posttransplant Outcomes (including 1-month, 90-day, 1-year, 1-year conditional on 90-day, and 3-year graft and patient survival): Evaluation cohorts will exclude transplants performed between March 13, 2020 and June 12, 2020, inclusive of March 13 and June 12. Patients given transplants before March 13, 2020 will have follow-up censored on March 12, 2020. Patients given transplants after June 12, 2020 will resume normal follow-up. Follow-up will not resume for patients given transplants before March 13, 2020 who are alive with function on June 12, 2020; however, this may be reconsidered as SRTR continues to explore moving to a period-prevalent methodology:

1-month, 90-day, 1-year & 1-year conditional on 90-day Patient and Graft Survival Evaluations: Transplants 7/1/2021-12/31/2023, follow-up through 6/30/2024.

3-year Patient and Graft Survival Evaluations: Transplants 1/1/2019-3/12/2020, follow-up through 3/12/2020. Transplants 6/13/2020-6/30/2021; follow-up through 6/30/2024.

Pre-Transplant Mortality Rate (formerly called Waitlist Mortality Rate): These evaluations are based on normal reporting cohorts.

Days after listing (and before transplant) between 7/1/2022 and 6/30/2024.



---

## COVID-19 Guide

---

Transplant Rate: These evaluations are based on normal reporting cohorts.

Candidates on the waitlist 7/1/2022-6/30/2024.

Overall Rate of Mortality After Listing: These evaluations are based on normal reporting cohorts.

Evaluation period: 7/1/2022-6/30/2024.

Offer Acceptance Rate: These evaluations are based on normal reporting cohorts.

Offers received 7/1/2023-6/30/2024.

These decisions will apply to the evaluations released in the SRTR's semi-annual program-specific reports scheduled for release on January 7, 2025. These changes have been communicated to the leadership of the Organ Procurement and Transplantation Network's (OPTN) Membership and Professional Standards Committee (MSPC). These decisions will then be re-evaluated as more information becomes available in preparation for the release scheduled for July 2025.

As with the July 2024 reports, SRTR will continue to report descriptive data beyond March 12, 2020, e.g., waitlist counts, transplant counts, recipient characteristics, donor counts, donor characteristics, etc., but will alter data for performance evaluation metrics as described above.



---

## User Guide

---

This report contains a wide range of useful information about the liver transplant program at Broward Health Medical Center. The report has three main sections:

- A. Program Summary
- B. Waiting List Information
- C. Transplant Information

The Program Summary is a one-page summary highlighting characteristics of the program, including the number of candidates on the waiting list, the number of transplants performed at the program, the number of patients being cared for by the program, and patient outcomes, including outcomes while on the waiting list (the transplant rate and the death rate while on the waiting list) and outcomes after transplant (patient and graft survival probabilities). If the program performed transplants in both adults and children, survival probabilities for adults and children (pediatrics) are provided separately. For each of the outcomes measures presented, a comparison is provided showing what would be expected at this program if it were performing as similar programs around the country perform when treating similar patients. More details regarding these outcome measures are provided in Sections B and C of the report.

The Waiting List Information section contains more detailed information on how many candidates are on the waiting list at the program, the types of candidates on the waiting list, how long candidates typically have to wait for a transplant at this program, how frequently candidates successfully receive a transplant, and how often candidates on the waiting list die before receiving a transplant.

Table B1 shows the activity on this program's waiting list during two recent 1-year periods and provides comparisons to all programs within this program's OPTN region (see <http://optn.transplant.hrsa.gov/members/regions.asp> for information on OPTN regions) and the nation as a whole. Tables B2 and B3 describe the candidates on the waiting list at this program, with comparisons to candidates waiting in the same donor service area (OPO/DSA) the OPTN region, and the nation as a whole.

Table B4 shows how many candidates were removed from the waiting list because they received a transplant. The program's transplant rate is calculated as the number of candidates who received a transplant divided by the person-years observed at the program (person-years is a combination of how many candidates were on the waiting list along with how long each candidate was followed since some candidates are not on the waiting list for the entire year). The transplant rate and comparisons to what would be expected at this program are presented in Figures B1 and B2. Figure B1 shows the transplant rate compared to what was expected at this program. The expected transplant rate is an estimate of what we would expect at this program if it were performing transplants at rates similar to other programs in the US with similar candidates on their waiting lists. The expected rate is only an estimate, and is made with a certain level of uncertainty. This uncertainty is shown in Figure B2. Figure B2 displays the ratio of the observed to the expected transplant rate. A ratio of 1 indicates that the observed transplant rate was equal to the expected transplant rate, while a ratio less than 1 indicates the observed rate was lower than expected rate and a ratio greater than 1 indicates the observed rate was higher than the expected rate. However, the level of uncertainty must be considered when interpreting these numbers. The 95% interval is also shown on Figure B2. This interval provides a range within which the true ratio of observed to expected transplant rates is likely to be. If this



---

## User Guide

---

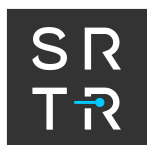
confidence interval includes (crosses) 1.0, then we cannot say that this program's observed transplant rate is different from what would be expected. The observed transplant rate at this program was 57.3 per 100 person-years. Transplant rates are also provided for adult and pediatric patients separately along with comparisons to adult and pediatric rates in the DSA, the OPTN region, and the nation. Transplant rates are also presented excluding transplants from a living donor (Table B4D and Figures B1D-B3D). Please refer to the PSR Technical Methods documentation available at <http://www.srtr.org> for more detail regarding how expected rates are calculated.

The pre-transplant mortality rate (previously called the waiting list mortality rate) for candidates on the waiting list is presented in Table B5 and Figures B4-B6. These data are presented in the same way as the transplant rate data in the previous section. The intent of this table and figures is to describe risk of death once candidates are listed rather than while they are listed, but before they are transplanted. Therefore, time at risk and deaths after removal from the waiting list for reasons other than transplant, transfer to another transplant program, or recovery (no longer needing a transplant), and before any subsequent transplant, are included. As with transplant rates, mortality rates should be interpreted carefully taking into consideration the interval displayed in Figure B5. For a complete description of how observed and expected mortality rates are calculated, please refer to the technical documentation available at <http://www.srtr.org>.

Survival from listing is presented in Table B6 and Figures B7-B9. These data are presented in the same way as the pre-transplant mortality rate data in the previous section. The intent of this table and figures is to describe risk of death once candidates are listed rather than while they are listed, including after a transplant. As with transplant rates, mortality rates should be interpreted carefully taking into consideration the interval displayed in Figure B8. For a complete description of how observed and expected mortality rates are calculated, please refer to the technical documentation available at <http://www.srtr.org>.

Table B7 presents information on what happens to candidates on the waiting list by three different time points after listing: 6 months, 12 months, and 18 months. The table displays percentages of candidates who have died, been removed from the waiting list, been transplanted, or been transferred or lost-to-follow-up. Tables B8 and B9 provide more detail regarding how many candidates have received a deceased donor transplant by certain time points during the first 3 years after being put on the transplant waiting list. Each row of Tables B8 and B9 presents the percent of candidates who received a deceased donor transplant by each time point. Table B10 presents data on the time it took for different percentages of patients to be transplanted for candidates added to the list between 07/01/2018 and 12/31/2023. The time it took for 5% (the 5th percentile) of patients to receive a transplant at this program was 0.1 months. If "Not Observed" is displayed in the table, then too few candidates received transplants before 06/30/2024 to calculate a particular percentile of transplant times.

Table B11 contains a summary of the offer acceptance practices of the program. The offer acceptance ratio indicates whether the program is more or less likely to accept offers than the average program. If the offer acceptance ratio is greater than 1.0, then the program tends to accept more offers than average; if the offer acceptance ratio is less than 1.0, then the program tends to accept fewer offers than average. Figure B10 shows the distribution of program offer acceptance rates as well as the offer acceptance rate for this program. Figures B11 - B15 similarly show offer acceptance rates for subsets



---

## User Guide

---

of offers.

The Transplant Information section begins with descriptions of transplant recipients in Tables C1 and C2. Data on recipients of deceased donor transplants are presented (Tables C1D and C2D); if applicable, data on recipients of living donor transplants are presented separately (Tables C1L and C2L). Comparisons to the region and the nation as a whole are provided. A description of the deceased donors used at this program is provided in Table C3D, along with characteristics of living donors in Table C3L, if applicable. Finally, information on the transplant procedure for deceased and living donor transplants is presented in Tables C4D and C4L, respectively.

Starting with Table C5, transplant outcomes are presented along with comparisons to what would be expected at this program and what happened in the nation as a whole. Tables C5-C14 (tables C5-C10 for Pancreas) present information on graft survival (survival of the transplanted organ), with data presented separately for adult and pediatric recipients. Patients are followed from the time of transplant until either failure of the transplanted organ or death, whichever comes first. Please refer to the technical methods for more information on these calculations (<http://www.srtr.org>).

While Tables C5-C14 present data on graft survival, Tables C15-C20 (tables C11-C20 for Pancreas) present information on patient survival. For these tables, patients are followed from the time of transplant until death, regardless of whether the transplant is functioning or the patient required another transplant to survive.

Tables C21 and C22 summarize the multiorgan transplant outcomes at this program. The summary statistics in these tables are descriptive and are not risk-adjusted for different donor and candidate characteristics.

Table D1 shows the rates of follow-up for living donors.

Additional information regarding the technical methods and the risk adjustment models used to estimate expected event rates is available on the SRTR website at <http://www.srtr.org>. We welcome and encourage feedback on these reports. Please feel free to share feedback with the SRTR at the following e-mail: [srtr@srtr.org](mailto:srtr@srtr.org).



## Table of Contents

Section	Page
COVID-19 Guide	i
User Guide	iii
<b>A. Program Summary</b>	
Program Summary	1
<b>B. Waiting List Information</b>	
Waiting list activity	2
Demographic characteristics of waiting list candidates	3
Medical characteristics of waiting list candidates	4
Transplant rates	5
Deceased donor transplant rates	6
Pre-transplant mortality rates (formerly called Waiting list mortality rates)	7
Patient survival from listing	8
Waiting list candidate status after listing	9
Medical urgency status 1 candidate status after listing	10
Percent of candidates with deceased donor transplants: demographic characteristics	11
Percent of candidates with deceased donor transplants: medical characteristics	12
Time to transplant for waiting list candidates	13
Offer acceptance practices	14
<b>C. Transplant Information</b>	
Deceased donor transplant recipient demographic characteristics	16
Living donor transplant recipient demographic characteristics	17
Deceased donor transplant recipient medical characteristics	18
Living donor transplant recipient medical characteristics	19
Deceased donor characteristics	20
Living donor characteristics	21
Deceased donor transplant characteristics	22
Living donor transplant characteristics	23
Graft survival	24
Patient survival	54
Multi-organ transplant graft survival	72
Multi-organ transplant patient survival	72
<b>D. Living Donor Information</b>	
Living donor follow-up summary	73



## A. Program Summary

Figure A1. Waiting list and transplant activity

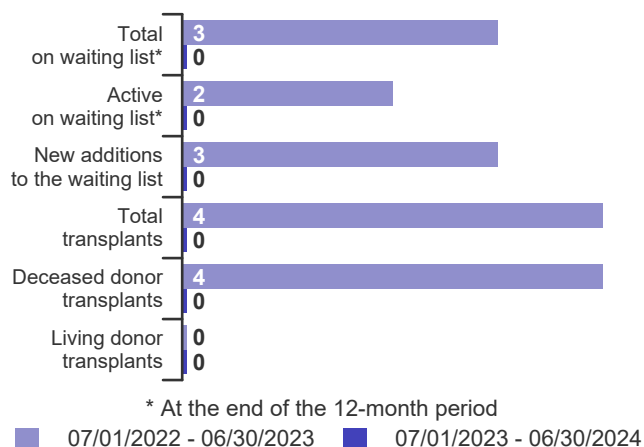


Table A1. Census of transplant recipients

Recipients	07/01/2022-06/30/2023	07/01/2023-06/30/2024
Transplanted at this center	4	0
Followed by this center*	65	19
...transplanted at this program	63	19
...transplanted elsewhere	2	0

\* Recipients followed are transplant recipients for whom the center has submitted a post-transplant follow-up form for a transplant that took place before the 12-month interval for each column.

Figure A2. Transplant rates  
07/01/2022 - 06/30/2024

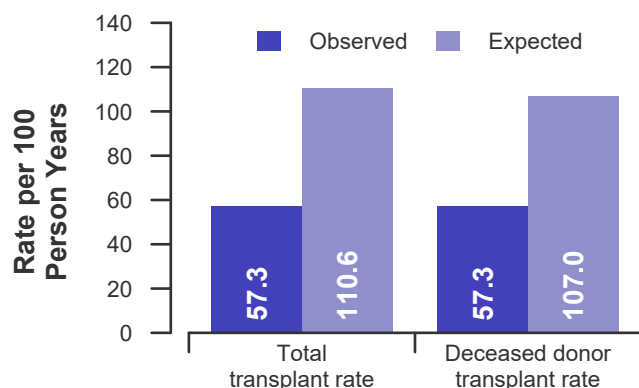


Figure A3. Pre-transplant mortality rates  
07/01/2022 - 06/30/2024

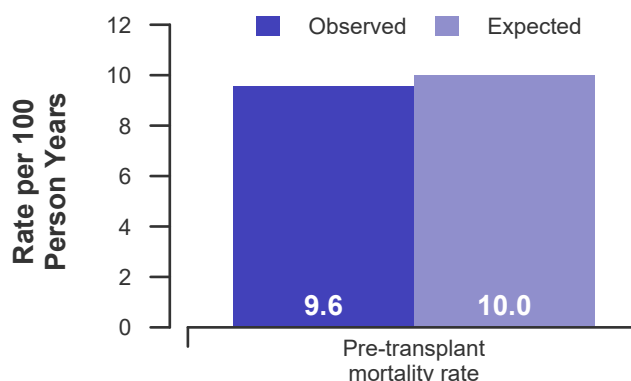


Figure A4. First-year adult graft and patient survival: 07/01/2021 - 12/31/2023

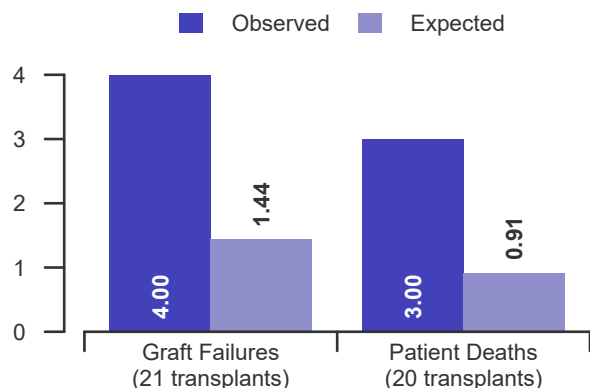


Figure A5. First-year pediatric graft and patient survival: 07/01/2021 - 12/31/2023

This center did not perform any transplants relevant to this figure during 07/01/2021-12/31/2023



## B. Waiting List Information

**Table B1. Waiting list activity summary: 07/01/2022 - 06/30/2024**

Waiting List Registrations	Counts for this center		Activity for 07/01/2023 to 06/30/2024 as percent of registrants on waiting list on 07/01/2023		
	07/01/2022- 06/30/2023	07/01/2023- 06/30/2024	This Center (%)	OPTN Region (%)	U.S. (%)
<b>On waiting list at start</b>	7	3	100.0	100.0	100.0
<b>Additions</b>					
New listings at this center	3	0	0.0	208.2	145.7
<b>Removals</b>					
Transferred to another center	0	0	0.0	0.7	1.5
Received living donor transplant*	0	0	0.0	1.8	6.2
Received deceased donor transplant*	4	0	0.0	154.5	101.8
Died	0	0	0.0	10.0	9.2
Transplanted at another center	0	0	0.0	3.4	2.9
Deteriorated	1	0	0.0	9.2	9.1
Recovered	0	0	0.0	9.3	10.9
Other reasons	2	3	100.0	15.1	11.2
<b>On waiting list at end of period</b>	3	0	0.0	104.2	92.8

\* These patients were removed from waiting list with removal code indicating transplant; this may not equal the number of transplants performed at this center during the specified period.



---

## B. Waiting List Information

---

**Table B2. Demographic characteristics of waiting list candidates**

**Candidates registered on the waiting list between 07/01/2023 and 06/30/2024**

This center did not have any registered  
waiting list candidates relevant to  
this table during  
07/01/2023-06/30/2024



---

## B. Waiting List Information

---

**Table B3. Medical characteristics of waiting list candidates**

**Candidates registered on the waiting list between 07/01/2023 and 06/30/2024**

This center did not have any registered  
waiting list candidates relevant to  
this table during  
07/01/2023-06/30/2024



## B. Waiting List Information

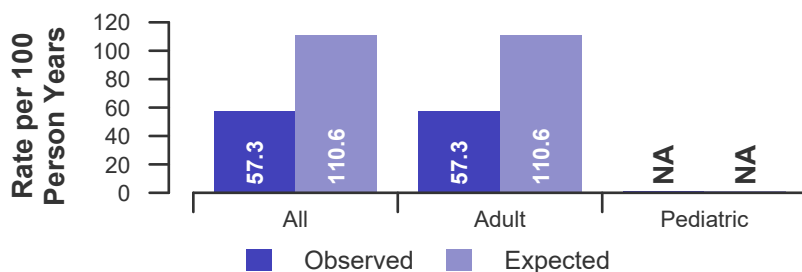
**Table B4. Transplant rates: 07/01/2022 - 06/30/2024**

Waiting List Registrations	This Center	OPO/DSA	Region	U.S.
<b>All Candidates</b>				
Count on waiting list at start*	7	175	1,088	11,429
Person Years**	7.0	294.7	2,096.9	21,075.0
Removals for Transplant	4	418	3,059	21,361
<b>Adult (18+) Candidates</b>				
Count on waiting list at start*	7	163	1,049	10,977
Person Years**	7.0	268.8	2,007.5	20,226.5
Removals for transplant	4	388	2,968	20,223
<b>Pediatric (&lt;18) Candidates</b>				
Count on waiting list at start*	--	--	--	--
Person Years**	--	--	--	--
Removals for transplant	--	--	--	--

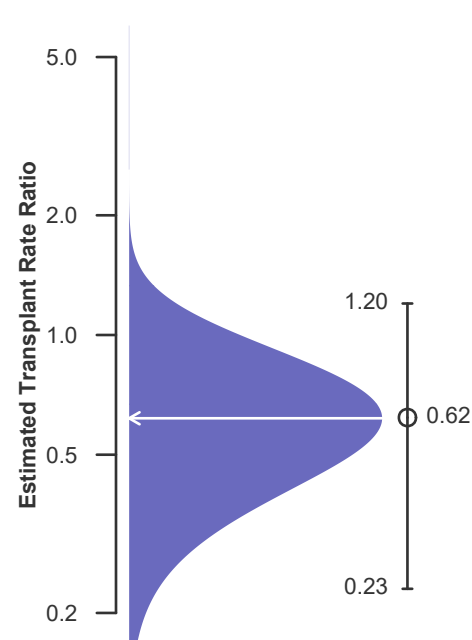
\* Counts in this table may be lower than similar counts in other waiting list tables, such as Table B1. A small percentage (~1%) of patients are found to have died or been transplanted before being removed from the waiting list, so these patients are excluded if the event occurs prior to the start of the study period. Inactive time on the waiting list is included in the calculations for this table.

\*\* Person years are calculated as days (converted to fractional years). The number of days from July 1 or from the date of first wait listing until death, transplant, removal from the waiting list or June 30.

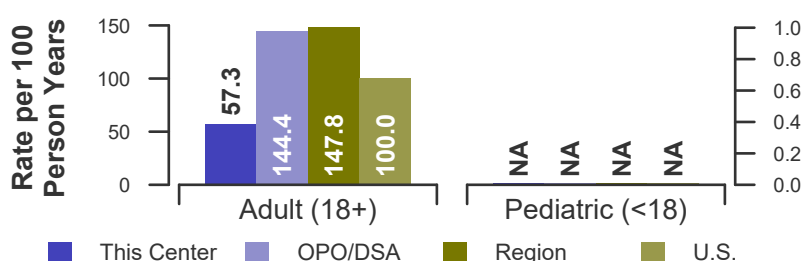
**Figure B1. Observed and expected transplant rates: 07/01/2022 - 06/30/2024**



**Figure B2. Transplant rate ratio estimate**



**Figure B3. Observed adult (18+) and pediatric (<18) transplant rates: 07/01/2022 - 06/30/2024**





## B. Waiting List Information

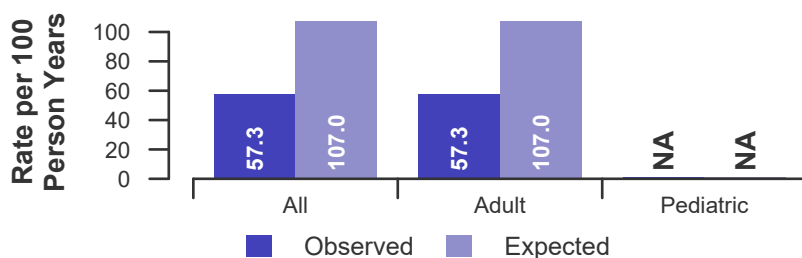
**Table B4D. Deceased donor transplant rates: 07/01/2022 - 06/30/2024**

Waiting List Registrations	This Center	OPO/DSA	Region	U.S.
<b>All Candidates</b>				
Count on waiting list at start*	7	175	1,088	11,429
Person Years**	7.0	294.7	2,096.9	21,075.0
Removals for Transplant	4	410	3,028	20,084
<b>Adult (18+) Candidates</b>				
Count on waiting list at start*	7	163	1,049	10,977
Person Years**	7.0	268.8	2,007.5	20,226.5
Removals for transplant	4	380	2,941	19,139
<b>Pediatric (&lt;18) Candidates</b>				
Count on waiting list at start*	--	--	--	--
Person Years**	--	--	--	--
Removals for transplant	--	--	--	--

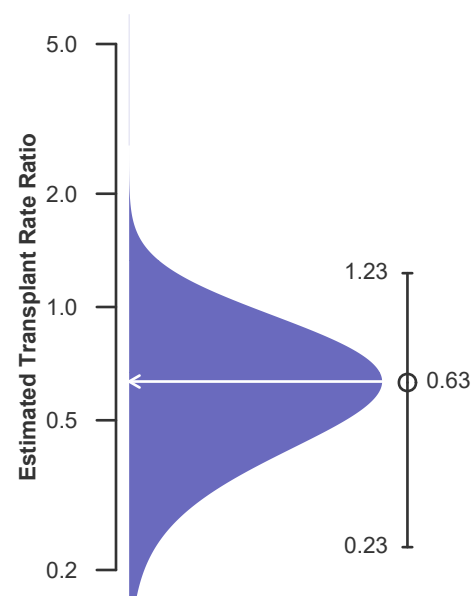
\* Counts in this table may be lower than similar counts in other waiting list tables, such as Table B1. A small percentage (~1%) of patients are found to have died or been transplanted before being removed from the waiting list, so these patients are excluded if the event occurs prior to the start of the study period. Inactive time on the waiting list is included in the calculations for this table.

\*\* Person years are calculated as days (converted to fractional years). The number of days from July 1 or from the date of first wait listing until death, transplant, removal from the waiting list or June 30.

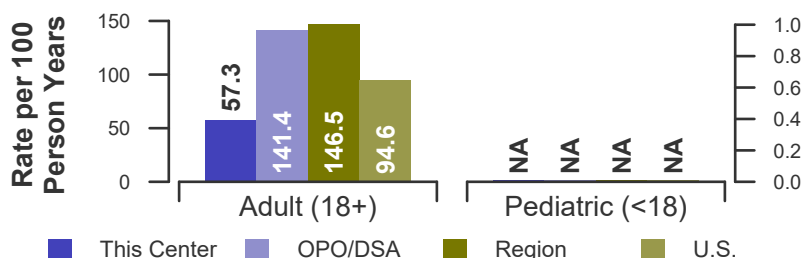
**Figure B1D. Observed and expected deceased donor transplant rates: 07/01/2022 - 06/30/2024**



**Figure B2D. Deceased donor transplant rate ratio estimate**



**Figure B3D. Observed adult (18+) and pediatric (<18) deceased donor transplant rates: 07/01/2022 - 06/30/2024**





## B. Waiting List Information

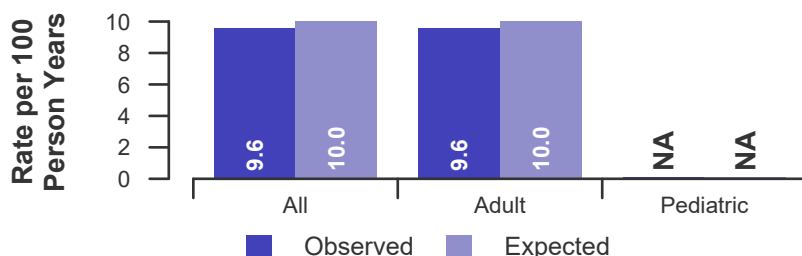
**Table B5. Pre-transplant mortality rates: 07/01/2022 - 06/30/2024**

Waiting List Registrations	This Center	OPO/DSA	Region	U.S.
<b>All Candidates</b>				
Count on waiting list at start*	7	175	1,088	11,429
Person Years**	10.4	374.6	2,452.5	24,728.8
Number of deaths	1	57	315	3,014
<b>Adult (18+) Candidates</b>				
Count on waiting list at start*	7	163	1,049	10,977
Person Years**	10.4	344.9	2,356.0	23,778.9
Number of deaths	1	51	303	2,957
<b>Pediatric (&lt;18) Candidates</b>				
Count on waiting list at start*	--	--	--	--
Person Years**	--	--	--	--
Number of deaths	--	--	--	--

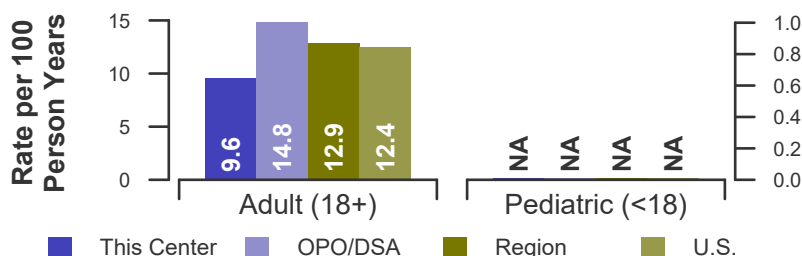
\* Counts in this table may be lower than similar counts in other waiting list tables, such as Table B1. A small percentage (~1%) of patients are found to have died or been transplanted before being removed from the waiting list, so these patients are excluded if the event occurs prior to the start of the study period. Inactive time on the waiting list is included in the calculations for this table.

\*\* Person years are calculated as days (converted to fractional years). The number of days from July 1 or from the date of first wait listing until death, transplant, 60 days after recovery, transfer or June 30.

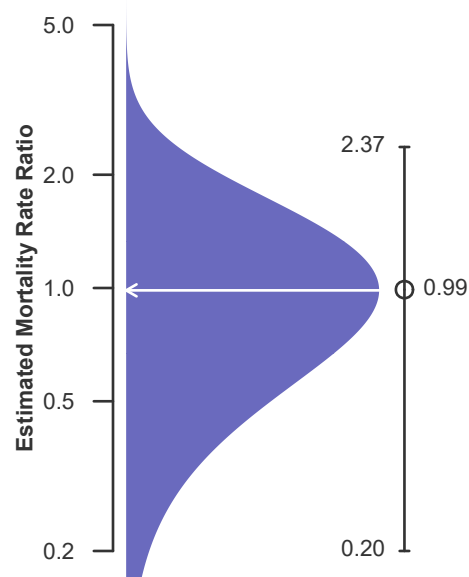
**Figure B4. Observed and expected pre-transplant mortality rates: 07/01/2022 - 06/30/2024**



**Figure B6. Observed adult (18+) and pediatric (<18) pre-transplant mortality rates: 07/01/2022 - 06/30/2024**



**Figure B5. Pre-transplant mortality rate ratio estimate**





## B. Waiting List Information

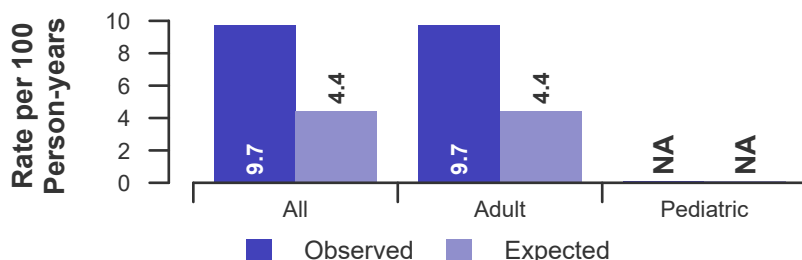
**Table B6. Rates of patient mortality after listing: 07/01/2022 - 06/30/2024**

Waiting List Registrations	This Center	OPO/DSA	Region	U.S.
<b>All Patients</b>				
Count at risk during the evaluation period	89	1,694	11,323	81,065
Person-years*	123.7	2,258.3	15,153.2	108,787.6
Number of Deaths	12	150	807	6,395
<b>Adult (18+) Patients</b>				
Count at risk during the evaluation period	89	1,558	10,872	76,664
Person-years*	123.7	2,093.3	14,561.7	102,787.2
Number of Deaths	12	140	781	6,262
<b>Pediatric (&lt;18) Patients</b>				
Count at risk during the evaluation period	0	136	451	4,401
Person-years*	0.0	165.0	591.5	6,000.5
Number of Deaths	0	10	26	133

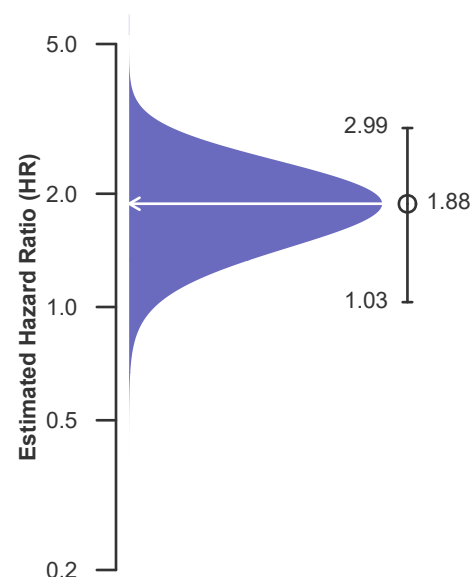
\* Person-years are calculated as days (converted to fractional years). The number of days from 07/01/2022, or from the date of first wait listing until death, reaching 5 years after listing or June 30, 2024.

\*\* Patient mortality after listing describes the relative survival experience of patients after listing. It depends on many factors, some of which are outside of the control of the transplant program. For example, availability of organs may not be the same in every part of the country.

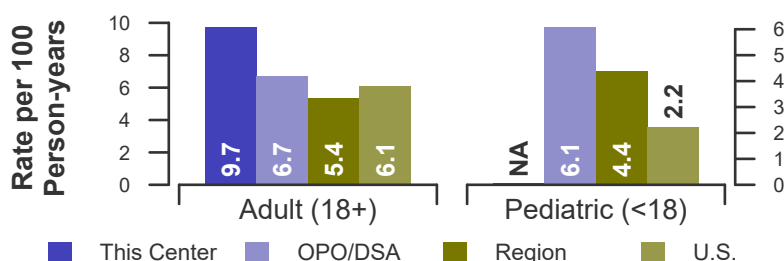
**Figure B7. Observed and expected rates of patient mortality after listing: 07/01/2022 - 06/30/2024**



**Figure B8. HR estimate of patient mortality after listing**



**Figure B9. Observed adult (18+) and pediatric (<18) rates of patient mortality after listing: 07/01/2022 - 06/30/2024**





## B. Waiting List Information

**Table B7. Waiting list candidate status after listing****Candidates registered on waiting list between 01/01/2022 and 12/31/2022**

Waiting list status (survival status)	This Center (N=11)			U.S. (N=13,611)		
	Months Since Listing			Months Since Listing		
	6	12	18	6	12	18
<b>Alive on waiting list (%)</b>	18.2	9.1	9.1	36.5	20.4	12.7
<b>Died on the waiting list without transplant (%)</b>	0.0	0.0	0.0	3.8	4.7	5.2
<b>Removed without transplant (%):</b>						
Condition worsened (status unknown)	9.1	9.1	9.1	3.6	4.9	5.7
Condition improved (status unknown)	0.0	0.0	0.0	1.4	2.6	3.7
Refused transplant (status unknown)	9.1	9.1	9.1	0.1	0.3	0.5
Other	0.0	0.0	0.0	1.6	2.9	3.9
<b>Transplant (living donor from waiting list only) (%):</b>						
Functioning (alive)	0.0	0.0	0.0	3.0	3.6	2.4
Failed-Retransplanted (alive)	0.0	0.0	0.0	0.1	0.1	0.1
Failed-alive not retransplanted	0.0	0.0	0.0	0.0	0.0	0.0
Died	0.0	0.0	0.0	0.0	0.1	0.1
Status Yet Unknown**	0.0	0.0	0.0	0.0	0.1	1.7
<b>Transplant (deceased donor) (%):</b>						
Functioning (alive)	45.5	45.5	27.3	45.7	50.7	36.6
Failed-Retransplanted (alive)	0.0	0.0	0.0	0.4	0.6	0.7
Failed-alive not retransplanted	0.0	0.0	0.0	0.0	0.0	0.0
Died	9.1	9.1	18.2	2.1	3.1	4.1
Status Yet Unknown*	9.1	18.2	27.3	1.5	5.4	22.0
<b>Lost or Transferred (status unknown) (%)</b>	0.0	0.0	0.0	0.2	0.5	0.6
<b>TOTAL (%)</b>	100.0	100.0	100.0	100.0	100.0	100.0
Total % known died on waiting list or after transplant	9.1	9.1	18.2	6.0	7.9	9.4
Total % known died or removed as unstable	18.2	18.2	27.3	9.6	12.8	15.1
Total % removed for transplant	63.6	72.7	72.7	52.8	63.7	67.7
Total % with known functioning transplant (alive)	45.5	45.5	27.3	48.6	54.3	39.0

\* Follow-up form covering specified time period not yet completed, and possibly has not become due.



## B. Waiting List Information

**Table B7S1. Medical urgency status 1 candidate status after listing****Candidates registered on the waiting list between 01/01/2022 and 12/31/2022**

Waiting list status (survival status)	This Center (N=1)			U.S. (N=447)		
	Months Since listing			Months Since listing		
	6	12	18	6	12	18
<b>Alive on waiting list (%)</b>	0.0	0.0	0.0	2.7	1.3	0.9
<b>Died on the waiting list without transplant (%)</b>	0.0	0.0	0.0	6.3	6.3	6.3
<b>Removed without transplant (%):</b>						
Condition worsened (status unknown)	0.0	0.0	0.0	6.9	6.9	7.2
Condition improved (status unknown)	0.0	0.0	0.0	18.8	19.9	20.1
Refused transplant (status unknown)	100.0	100.0	100.0	0.4	0.4	0.4
Other	0.0	0.0	0.0	0.7	0.7	0.7
<b>Transplant (living donor from waiting list only) (%):</b>						
Functioning (alive)	0.0	0.0	0.0	3.1	2.2	1.3
Failed-Retransplanted (alive)	0.0	0.0	0.0	0.0	0.0	0.0
Failed-alive not retransplanted	0.0	0.0	0.0	0.0	0.0	0.0
Died	0.0	0.0	0.0	0.2	0.4	0.4
Status Yet Unknown**	0.0	0.0	0.0	0.0	0.7	1.6
<b>Transplant (deceased donor) (%):</b>						
Functioning (alive)	0.0	0.0	0.0	51.7	46.8	36.7
Failed-Retransplanted (alive)	0.0	0.0	0.0	0.9	1.1	1.1
Failed-alive not retransplanted	0.0	0.0	0.0	0.4	0.2	0.0
Died	0.0	0.0	0.0	6.3	7.6	8.3
Status Yet Unknown*	0.0	0.0	0.0	1.1	4.9	14.5
<b>Lost or Transferred (status unknown) (%)</b>	0.0	0.0	0.0	0.4	0.4	0.4
<b>TOTAL (%)</b>	100.0	100.0	100.0	100.0	100.0	100.0
Total % known died on waiting list or after transplant	0.0	0.0	0.0	12.8	14.3	15.0
Total % known died or removed as unstable	0.0	0.0	0.0	19.7	21.3	22.1
Total % removed for transplant	0.0	0.0	0.0	63.8	64.0	64.0
Total % with known functioning transplant (alive)	0.0	0.0	0.0	54.8	49.0	38.0

\* Follow-up form covering specified time period not yet completed, and possibly has not become due.



## B. Waiting List Information

**Table B8. Percent of candidates with deceased donor transplants: demographic characteristics**  
Candidates registered on the waiting list between 07/01/2018 and 06/30/2021

Characteristic	Percent transplanted at time periods since listing									
	This Center					United States				
	N	30 day	1 year	2 years	3 years	N	30 day	1 year	2 years	3 years
<b>All</b>	64	31.2	54.7	56.2	56.2	38,667	26.3	54.4	59.9	61.6
<b>Ethnicity/Race*</b>										
White	36	33.3	55.6	58.3	58.3	26,504	26.7	55.0	60.2	61.9
African-American	8	25.0	37.5	37.5	37.5	2,982	29.3	57.6	62.9	64.7
Hispanic/Latino	17	35.3	64.7	64.7	64.7	6,761	23.8	51.2	57.5	59.3
Asian	3	0.0	33.3	33.3	33.3	1,744	24.2	50.4	58.5	61.1
Other	0	--	--	--	--	676	29.7	55.0	60.1	62.0
Unknown	0	--	--	--	--	0	--	--	--	--
<b>Age</b>										
<2 years	0	--	--	--	--	779	23.9	73.2	75.4	76.5
2-11 years	0	--	--	--	--	572	24.7	67.7	72.4	74.1
12-17 years	0	--	--	--	--	443	20.8	58.2	63.7	64.6
18-34 years	7	42.9	57.1	57.1	57.1	2,452	38.4	58.0	61.9	63.1
35-49 years	10	40.0	70.0	70.0	70.0	7,334	37.9	59.6	63.7	65.1
50-64 years	34	35.3	55.9	58.8	58.8	18,588	24.4	53.3	59.2	61.2
65-69 years	9	11.1	22.2	22.2	22.2	6,459	17.5	48.3	55.5	57.4
70+ years	4	0.0	75.0	75.0	75.0	2,040	18.1	48.2	54.1	55.1
<b>Gender</b>										
Male	41	26.8	53.7	53.7	53.7	24,003	26.2	55.5	61.1	62.9
Female	23	39.1	56.5	60.9	60.9	14,664	26.5	52.5	58.0	59.6

\* Race and ethnicity are reported together as a single data element, reflecting their data collection (either race or ethnicity is required, but not both). Patients formerly coded as white and Hispanic are coded as Hispanic. Race and ethnicity sum to 100%.



## B. Waiting List Information

**Table B9. Percent of candidates with deceased donor transplants: medical characteristics**  
Candidates registered on the waiting list between 07/01/2018 and 06/30/2021

Characteristic	N	Percent transplanted at time periods since listing This Center				N	United States			
		30 day	1 year	2 years	3 years		30 day	1 year	2 years	3 years
<b>All</b>	64	31.2	54.7	56.2	56.2	38,667	26.3	54.4	59.9	61.6
<b>Blood Type</b>										
O	27	29.6	51.9	51.9	51.9	18,056	24.9	52.0	57.6	59.6
A	25	32.0	56.0	60.0	60.0	14,329	25.6	52.5	58.4	60.2
B	9	33.3	44.4	44.4	44.4	4,735	29.6	62.4	67.3	68.8
AB	3	33.3	100.0	100.0	100.0	1,547	39.5	74.2	76.8	77.4
<b>Previous Transplant</b>										
Yes	2	100.0	100.0	100.0	100.0	1,865	32.7	55.4	59.1	60.2
No	62	29.0	53.2	54.8	54.8	36,802	26.0	54.3	59.9	61.7
<b>Primary Disease</b>										
Acute Hepatic Necrosis	4	0.0	25.0	25.0	25.0	1,916	58.4	66.8	68.2	68.6
Non-Cholestatic Cirrhosis	56	35.7	57.1	58.9	58.9	25,612	27.9	54.2	59.1	60.8
Cholestatic Liver Disease/Cirrhosis	1	0.0	0.0	0.0	0.0	2,538	21.2	51.7	59.7	61.6
Biliary Atresia	0	--	--	--	--	668	15.7	66.8	71.3	72.6
Metabolic Diseases	0	--	--	--	--	827	27.8	69.6	74.2	75.7
Malignant Neoplasms	3	0.0	66.7	66.7	66.7	4,744	8.2	47.3	56.5	58.9
Other	0	--	--	--	--	2,346	27.2	54.6	60.4	62.8
Missing	0	--	--	--	--	16	37.5	37.5	43.8	43.8
<b>Medical Urgency Status/MELD/PELD at Listing*</b>										
Status 1	0	--	--	--	--	0	--	--	--	--
Status 1A	3	33.3	33.3	33.3	33.3	1,183	62.2	62.3	62.5	62.6
Status 1B	0	--	--	--	--	137	50.4	82.5	82.5	82.5
Status 2A	0	--	--	--	--	0	--	--	--	--
Status 2B	0	--	--	--	--	0	--	--	--	--
Status 3	0	--	--	--	--	0	--	--	--	--
MELD 6-10	9	0.0	55.6	55.6	55.6	6,657	2.6	36.1	46.4	49.5
MELD 11-14	5	0.0	0.0	0.0	0.0	4,856	3.5	34.5	44.1	47.3
MELD 15-20	12	8.3	25.0	33.3	33.3	8,019	11.0	47.0	54.0	56.2
MELD 21-30	22	40.9	72.7	72.7	72.7	9,126	34.5	65.7	68.7	69.6
MELD 31-40	9	66.7	77.8	77.8	77.8	4,694	76.8	83.0	83.1	83.1
PELD less than or equal to 10	0	--	--	--	--	598	11.0	72.7	78.3	80.8
PELD 11-14	0	--	--	--	--	96	18.8	78.1	81.2	83.3
PELD 15-20	0	--	--	--	--	149	23.5	74.5	75.8	75.8
PELD 21-30	0	--	--	--	--	111	20.7	75.7	77.5	77.5
PELD 31 or greater	0	--	--	--	--	48	45.8	70.8	70.8	70.8
Temporarily Inactive	4	75.0	75.0	75.0	75.0	2,993	41.3	56.8	60.0	61.1

\* MELD/PELD score based on laboratory measures is shown for listings beginning 2/27/2002 unless patient is Status 1 or Temporarily Inactive. MELD/PELD scores based on exception rules are not used. Status 1 separated into 1A and 1B in August 2005.



## B. Waiting List Information

**Table B10. Time to transplant for waiting list candidates\***

**Candidates registered on the waiting list between 07/01/2018 and 12/31/2023**

Percentile	Center	Months to Transplant**		U.S.
		OPO/DSA	Region	
5th	0.1	0.1	0.1	0.1
10th	0.2	0.2	0.1	0.2
25th	0.5	0.7	0.5	0.6
50th (median time to transplant)	5.2	4.0	3.2	6.0
75th	Not Observed	Not Observed	25.4	Not Observed

\* If cells contain "Not Observed" fewer than that percentile of patients had received a transplant. For example, the 50th percentile of time to transplant is the time when 50% of candidates have received transplants. If waiting times are long, then the 50th percentile may not be observed during the follow-up period for this table. Also, if more than 50% of candidates are removed from the list due to death or other reasons before receiving transplants, then the 50th percentile of time to transplant will not be observed.

\*\* Censored on 06/30/2024. Calculated as the months after listing, during which the corresponding percent of all patients initially listed had received a transplant.



## B. Waiting List Information

**Table B11. Offer Acceptance Practices: 07/01/2023 - 06/30/2024**

Offers Acceptance Characteristics	This Center	OPO/DSA	Region	U.S.
<b>Overall</b>				
Number of Offers	--	--	--	--
Number of Acceptances	--	--	--	--
Expected Acceptances	--	--	--	--
Offer Acceptance Ratio*	--	--	--	--
95% Credible Interval**	[--, --]	--	--	--
<b>PHS increased infectious risk</b>				
Number of Offers	--	--	--	--
Number of Acceptances	--	--	--	--
Expected Acceptances	--	--	--	--
Offer Acceptance Ratio*	--	--	--	--
95% Credible Interval**	[--, --]	--	--	--
<b>DCD donor</b>				
Number of Offers	--	--	--	--
Number of Acceptances	--	--	--	--
Expected Acceptances	--	--	--	--
Offer Acceptance Ratio*	--	--	--	--
95% Credible Interval**	[--, --]	--	--	--
<b>HCV+ donor</b>				
Number of Offers	--	--	--	--
Number of Acceptances	--	--	--	--
Expected Acceptances	--	--	--	--
Offer Acceptance Ratio*	--	--	--	--
95% Credible Interval**	[--, --]	--	--	--
<b>Hard-to-Place Livers (Over 50 Offers)</b>				
Number of Offers	--	--	--	--
Number of Acceptances	--	--	--	--
Expected Acceptances	--	--	--	--
Offer Acceptance Ratio*	--	--	--	--
95% Credible Interval**	[--, --]	--	--	--
<b>Donor more than 500 miles away</b>				
Number of Offers	--	--	--	--
Number of Acceptances	--	--	--	--
Expected Acceptances	--	--	--	--
Offer Acceptance Ratio*	--	--	--	--
95% Credible Interval**	[--, --]	--	--	--



---

## B. Waiting List Information

---

**Figure B10. Offer acceptance: Overall**

This program received no offers.

**Figure B11. Offer acceptance:  
PHS increased infectious risk**

This program received no offers.

**Figure B12. Offer acceptance: DCD Donor**

This program received no offers.

**Figure B13. Offer acceptance: HCV+ Donor**

This program received no offers.

**Figure B14. Offer acceptance: Offer number > 50**

This program received no offers.

**Figure B15. Offer acceptance:  
Donor more than 500 miles away**

This program received no offers.



## C. Transplant Information

**Table C1D. Deceased donor transplant recipient demographic characteristics**

**Patients transplanted between 07/01/2023 and 06/30/2024**

**This center did not perform any  
transplants relevant to  
this table during  
07/01/2023-06/30/2024**



---

## C. Transplant Information

---

**Table C1L. Living donor transplant recipient demographic characteristics**  
**Patients transplanted between 07/01/2023 and 06/30/2024**

**This center did not perform any  
transplants relevant to  
this table during  
07/01/2023-06/30/2024**



---

## C. Transplant Information

---

**Table C2D. Deceased donor transplant recipient medical characteristics  
Patients transplanted between 07/01/2023 and 06/30/2024**

**This center did not perform any  
transplants relevant to  
this table during  
07/01/2023-06/30/2024**



---

## C. Transplant Information

---

**Table C2L. Living donor transplant recipient medical characteristics  
Patients transplanted between 07/01/2023 and 06/30/2024**

**This center did not perform any  
transplants relevant to  
this table during  
07/01/2023-06/30/2024**



---

## C. Transplant Information

---

### Table C3D. Deceased donor characteristics

Transplants performed between 07/01/2023 and 06/30/2024

This center did not perform any  
transplants relevant to  
this table during  
07/01/2023-06/30/2024



---

## C. Transplant Information

---

### Table C3L. Living donor characteristics

Transplants performed between 07/01/2023 and 06/30/2024

This center did not perform any  
transplants relevant to  
this table during  
07/01/2023-06/30/2024



---

## C. Transplant Information

---

### Table C4D. Deceased donor transplant characteristics

Transplants performed between 07/01/2023 and 06/30/2024

This center did not perform any  
transplants relevant to  
this table during  
07/01/2023-06/30/2024



---

## C. Transplant Information

---

### Table C4L. Living donor transplant characteristics

Transplants performed between 07/01/2023 and 06/30/2024

This center did not perform any  
transplants relevant to  
this table during  
07/01/2023-06/30/2024



## C. Transplant Information

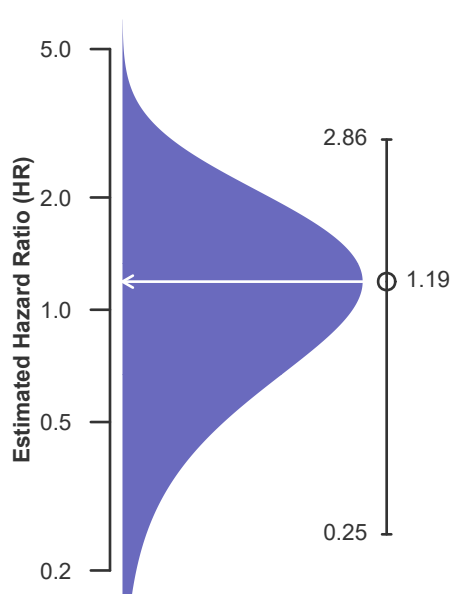
**Table C5. Adult (18+) 1-month survival with a functioning graft**  
Single organ transplants performed between 07/01/2021 and 12/31/2023  
Deaths and retransplants are considered graft failures

	FLBC	U.S.
Number of transplants evaluated	21	21,168
Estimated probability of surviving with a functioning graft at 1 month & [95% CI] (unadjusted for patient and donor characteristics)	95.24% [86.55%-100.00%]	97.12% [96.89%-97.34%]
Expected probability of surviving with a functioning graft at 1 month (adjusted for patient and donor characteristics)	97.55%	--
Number of observed graft failures (including deaths) during the first month after transplant	1	610
Number of expected graft failures (including deaths) during the first month after transplant	0.52	--
Estimated hazard ratio*	1.19	--
95% credible interval for the hazard ratio**	[0.25, 2.86]	--

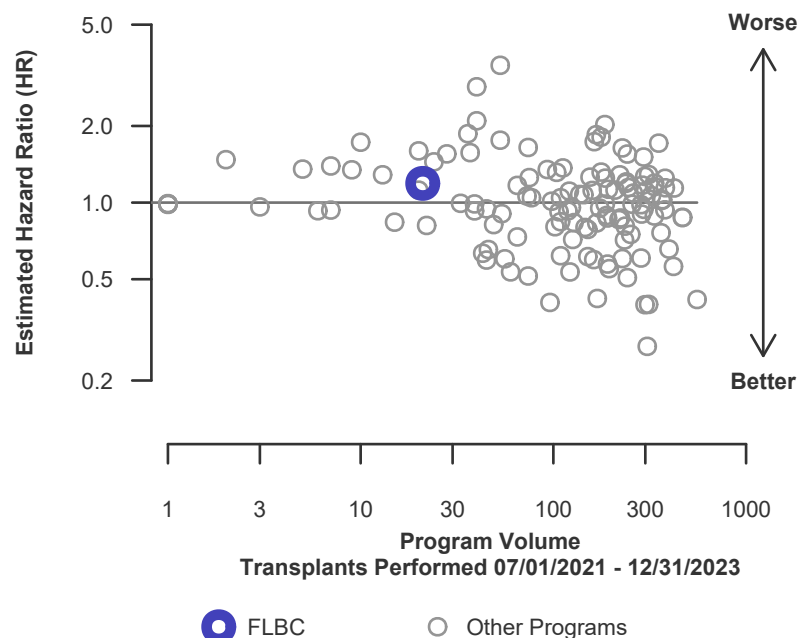
\* The hazard ratio provides an estimate of how Broward Health Medical Center's results compare with what was expected based on modeling the transplant outcomes from all U.S. programs. A ratio above 1 indicates higher than expected graft failure rates (e.g., a hazard ratio of 1.5 would indicate 50% higher risk), and a ratio below 1 indicates lower than expected graft failure rates (e.g., a hazard ratio of 0.75 would indicate 25% lower risk). If FLBC's graft failure rate were precisely the expected rate, the estimated hazard ratio would be 1.0.

\*\* The 95% credible interval, [0.25, 2.86], indicates the location of FLBC's true hazard ratio with 95% probability. The best estimate is 19% higher risk of graft failure compared to an average program, but FLBC's performance could plausibly range from 75% reduced risk up to 186% increased risk.

**Figure C1. Adult (18+) 1-month graft failure HR estimate**



**Figure C2. Adult (18+) 1-month graft failure HR program comparison**





## C. Transplant Information

**Table C5D. Adult (18+) 1-month survival with a functioning deceased donor graft**

Single organ transplants performed between 07/01/2021 and 12/31/2023

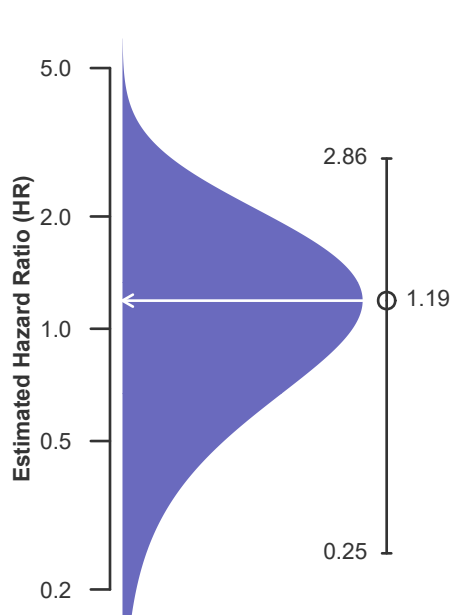
Deaths and retransplants are considered graft failures

	FLBC	U.S.
Number of transplants evaluated	21	19,827
Estimated probability of surviving with a functioning graft at 1 month & [95% CI] (unadjusted for patient and donor characteristics)	95.24% [86.55%-100.00%]	97.14% [96.91%-97.37%]
Expected probability of surviving with a functioning graft at 1 month (adjusted for patient and donor characteristics)	97.55%	--
Number of observed graft failures (including deaths) during the first month after transplant	1	567
Number of expected graft failures (including deaths) during the first month after transplant	0.52	--
Estimated hazard ratio*	1.19	--
95% credible interval for the hazard ratio**	[0.25, 2.86]	--

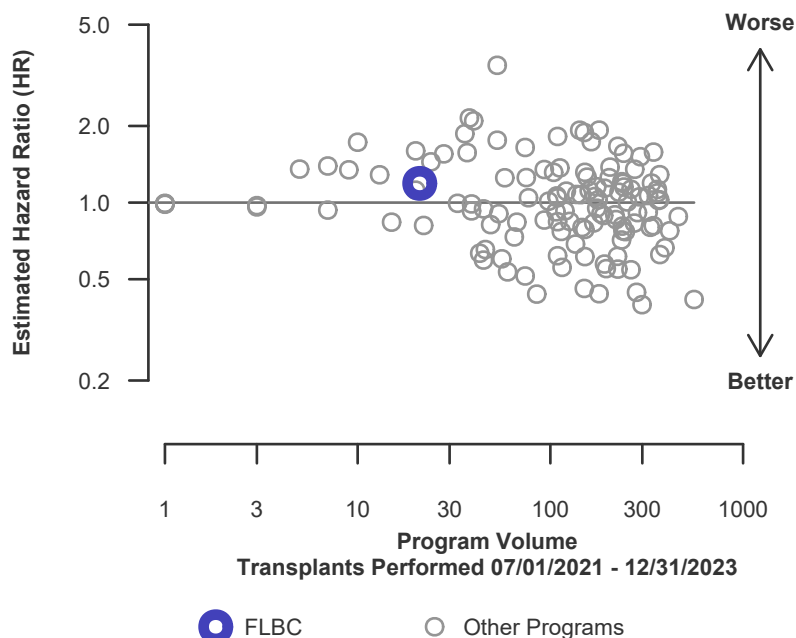
\* The hazard ratio provides an estimate of how Broward Health Medical Center's results compare with what was expected based on modeling the transplant outcomes from all U.S. programs. A ratio above 1 indicates higher than expected graft failure rates (e.g., a hazard ratio of 1.5 would indicate 50% higher risk), and a ratio below 1 indicates lower than expected graft failure rates (e.g., a hazard ratio of 0.75 would indicate 25% lower risk). If FLBC's graft failure rate were precisely the expected rate, the estimated hazard ratio would be 1.0.

\*\* The 95% credible interval, [0.25, 2.86], indicates the location of FLBC's true hazard ratio with 95% probability. The best estimate is 19% higher risk of graft failure compared to an average program, but FLBC's performance could plausibly range from 75% reduced risk up to 186% increased risk.

**Figure C1D. Adult (18+) 1-month deceased donor graft failure HR estimate**



**Figure C2D. Adult (18+) 1-month deceased donor graft failure HR program comparison**





## C. Transplant Information

### Table C5L. Adult (18+) 1-month survival with a functioning living donor graft

Single organ transplants performed between 07/01/2021 and 12/31/2023

Deaths and retransplants are considered graft failures

This center did not perform any  
transplants relevant to  
this table during  
07/01/2021-12/31/2023

### Figure C1L. Adult (18+) 1-month living donor graft failure HR estimate

This center did not perform any  
transplants relevant to  
this figure during  
07/01/2021-12/31/2023

### Figure C2L. Adult (18+) 1-month living donor graft failure HR program comparison

This center did not perform any  
transplants relevant to  
this figure during  
07/01/2021-12/31/2023



## C. Transplant Information

**Table C6. Adult (18+) 90-Day survival with a functioning graft**

Single organ transplants performed between 07/01/2021 and 12/31/2023

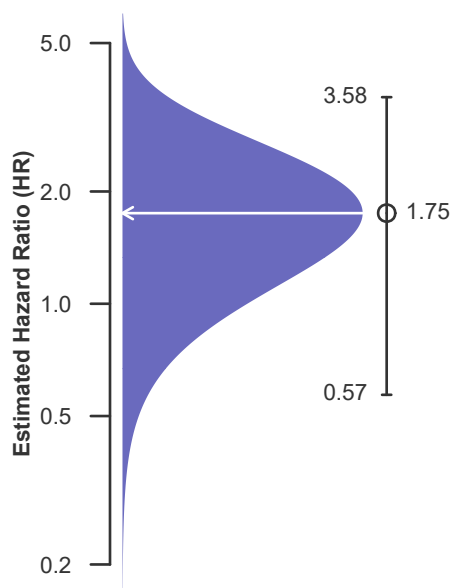
Deaths and retransplants are considered graft failures

	FLBC	U.S.
Number of transplants evaluated	21	21,168
Estimated probability of surviving with a functioning graft at 90 days & [95% CI] (unadjusted for patient and donor characteristics)	85.71% [71.98%-100.00%]	95.39% [95.11%-95.68%]
Expected probability of surviving with a functioning graft at 90 days (adjusted for patient and donor characteristics)	95.96%	--
Number of observed graft failures (including deaths) during the first 90 days after transplant	3	975
Number of expected graft failures (including deaths) during the first 90 days after transplant	0.86	--
Estimated hazard ratio*	1.75	--
95% credible interval for the hazard ratio**	[0.57, 3.58]	--

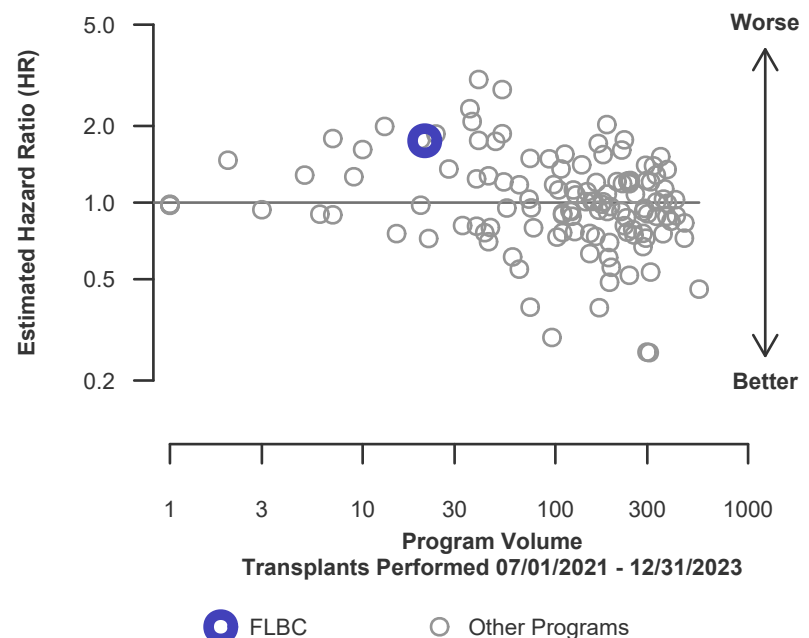
\* The hazard ratio provides an estimate of how Broward Health Medical Center's results compare with what was expected based on modeling the transplant outcomes from all U.S. programs. A ratio above 1 indicates higher than expected graft failure rates (e.g., a hazard ratio of 1.5 would indicate 50% higher risk), and a ratio below 1 indicates lower than expected graft failure rates (e.g., a hazard ratio of 0.75 would indicate 25% lower risk). If FLBC's graft failure rate were precisely the expected rate, the estimated hazard ratio would be 1.0.

\*\* The 95% credible interval, [0.57, 3.58], indicates the location of FLBC's true hazard ratio with 95% probability. The best estimate is 75% higher risk of graft failure compared to an average program, but FLBC's performance could plausibly range from 43% reduced risk up to 258% increased risk.

**Figure C3. Adult (18+) 90-Day graft failure HR estimate**



**Figure C4. Adult (18+) 90-Day graft failure HR program comparison**





## C. Transplant Information

**Table C6D. Adult (18+) 90-Day survival with a functioning deceased donor graft**

Single organ transplants performed between 07/01/2021 and 12/31/2023

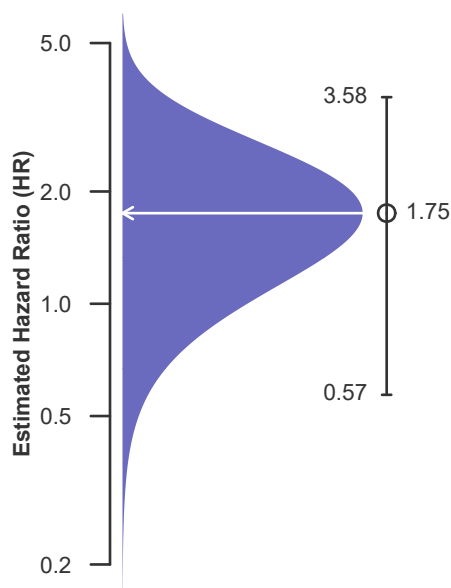
Deaths and retransplants are considered graft failures

	FLBC	U.S.
Number of transplants evaluated	21	19,827
Estimated probability of surviving with a functioning graft at 90 days & [95% CI] (unadjusted for patient and donor characteristics)	85.71% [71.98%-100.00%]	95.36% [95.07%-95.66%]
Expected probability of surviving with a functioning graft at 90 days (adjusted for patient and donor characteristics)	95.96%	--
Number of observed graft failures (including deaths) during the first 90 days after transplant	3	919
Number of expected graft failures (including deaths) during the first 90 days after transplant	0.86	--
Estimated hazard ratio*	1.75	--
95% credible interval for the hazard ratio**	[0.57, 3.58]	--

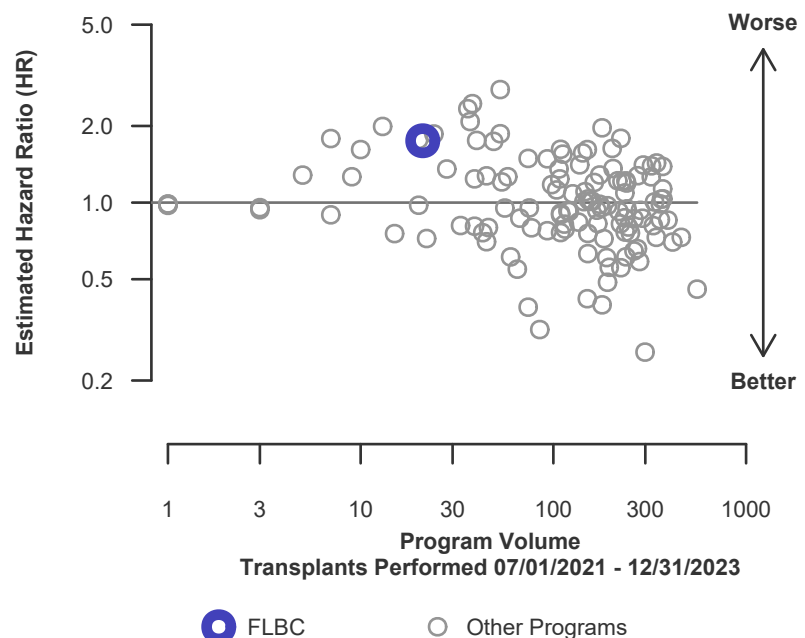
\* The hazard ratio provides an estimate of how Broward Health Medical Center's results compare with what was expected based on modeling the transplant outcomes from all U.S. programs. A ratio above 1 indicates higher than expected graft failure rates (e.g., a hazard ratio of 1.5 would indicate 50% higher risk), and a ratio below 1 indicates lower than expected graft failure rates (e.g., a hazard ratio of 0.75 would indicate 25% lower risk). If FLBC's graft failure rate were precisely the expected rate, the estimated hazard ratio would be 1.0.

\*\* The 95% credible interval, [0.57, 3.58], indicates the location of FLBC's true hazard ratio with 95% probability. The best estimate is 75% higher risk of graft failure compared to an average program, but FLBC's performance could plausibly range from 43% reduced risk up to 258% increased risk.

**Figure C3D. Adult (18+) 90-Day deceased donor graft failure HR estimate**



**Figure C4D. Adult (18+) 90-Day deceased donor graft failure HR program comparison**





## C. Transplant Information

### Table C6L. Adult (18+) 90-Day survival with a functioning living donor graft

Single organ transplants performed between 07/01/2021 and 12/31/2023

Deaths and retransplants are considered graft failures

This center did not perform any  
transplants relevant to  
this table during  
07/01/2021-12/31/2023

### Figure C3L. Adult (18+) 90-Day living donor graft failure HR estimate

This center did not perform any  
transplants relevant to  
this figure during  
07/01/2021-12/31/2023

### Figure C4L. Adult (18+) 90-Day living donor graft failure HR program comparison

This center did not perform any  
transplants relevant to  
this figure during  
07/01/2021-12/31/2023



## C. Transplant Information

**Table C7. Adult (18+) 1-year survival with a functioning graft**

Single organ transplants performed between 07/01/2021 and 12/31/2023

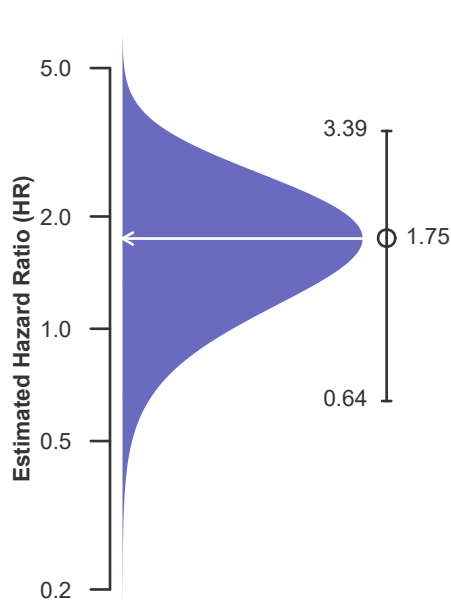
Deaths and retransplants are considered graft failures

	FLBC	U.S.
Number of transplants evaluated	21	21,168
Estimated probability of surviving with a functioning graft at 1 year & [95% CI] (unadjusted for patient and donor characteristics)	80.95% [65.79%-99.62%]	92.24% [91.87%-92.62%]
Expected probability of surviving with a functioning graft at 1 year (adjusted for patient and donor characteristics)	93.09%	--
Number of observed graft failures (including deaths) during the first year after transplant	4	1,560
Number of expected graft failures (including deaths) during the first year after transplant	1.44	--
Estimated hazard ratio*	1.75	--
95% credible interval for the hazard ratio**	[0.64, 3.39]	--

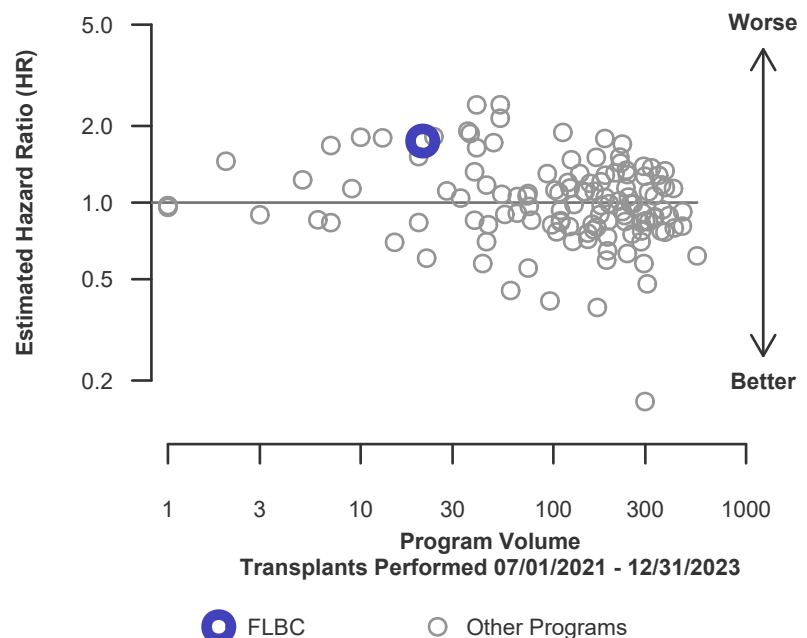
\* The hazard ratio provides an estimate of how Broward Health Medical Center's results compare with what was expected based on modeling the transplant outcomes from all U.S. programs. A ratio above 1 indicates higher than expected graft failure rates (e.g., a hazard ratio of 1.5 would indicate 50% higher risk), and a ratio below 1 indicates lower than expected graft failure rates (e.g., a hazard ratio of 0.75 would indicate 25% lower risk). If FLBC's graft failure rate were precisely the expected rate, the estimated hazard ratio would be 1.0.

\*\* The 95% credible interval, [0.64, 3.39], indicates the location of FLBC's true hazard ratio with 95% probability. The best estimate is 75% higher risk of graft failure compared to an average program, but FLBC's performance could plausibly range from 36% reduced risk up to 239% increased risk.

**Figure C5. Adult (18+) 1-year graft failure HR estimate**



**Figure C6. Adult (18+) 1-year graft failure HR program comparison**





## C. Transplant Information

**Table C7D. Adult (18+) 1-year survival with a functioning deceased donor graft**

Single organ transplants performed between 07/01/2021 and 12/31/2023

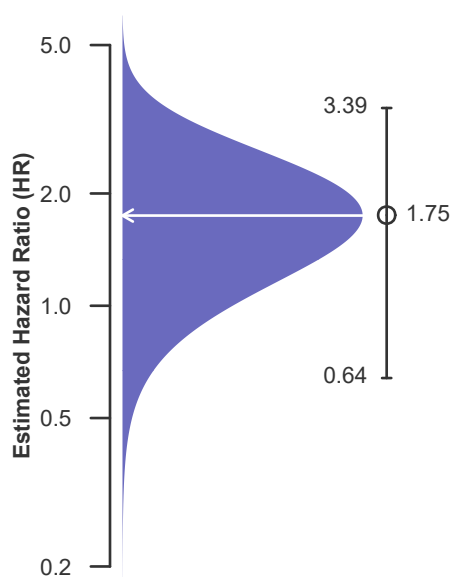
Deaths and retransplants are considered graft failures

	FLBC	U.S.
Number of transplants evaluated	21	19,827
Estimated probability of surviving with a functioning graft at 1 year & [95% CI] (unadjusted for patient and donor characteristics)	80.95% [65.79%-99.62%]	92.14% [91.75%-92.53%]
Expected probability of surviving with a functioning graft at 1 year (adjusted for patient and donor characteristics)	93.09%	--
Number of observed graft failures (including deaths) during the first year after transplant	4	1,479
Number of expected graft failures (including deaths) during the first year after transplant	1.44	--
Estimated hazard ratio*	1.75	--
95% credible interval for the hazard ratio**	[0.64, 3.39]	--

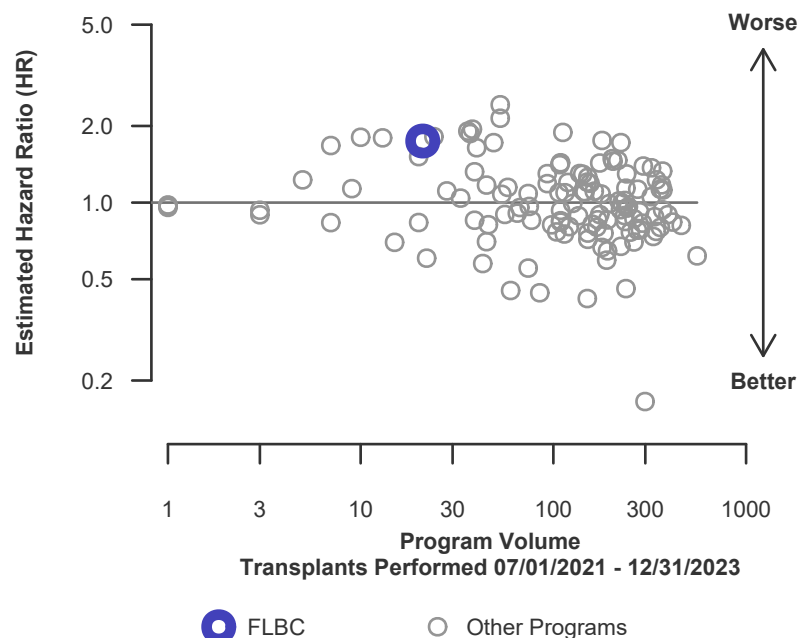
\* The hazard ratio provides an estimate of how Broward Health Medical Center's results compare with what was expected based on modeling the transplant outcomes from all U.S. programs. A ratio above 1 indicates higher than expected graft failure rates (e.g., a hazard ratio of 1.5 would indicate 50% higher risk), and a ratio below 1 indicates lower than expected graft failure rates (e.g., a hazard ratio of 0.75 would indicate 25% lower risk). If FLBC's graft failure rate were precisely the expected rate, the estimated hazard ratio would be 1.0.

\*\* The 95% credible interval, [0.64, 3.39], indicates the location of FLBC's true hazard ratio with 95% probability. The best estimate is 75% higher risk of graft failure compared to an average program, but FLBC's performance could plausibly range from 36% reduced risk up to 239% increased risk.

**Figure C5D. Adult (18+) 1-year deceased donor graft failure HR estimate**



**Figure C6D. Adult (18+) 1-year deceased donor graft failure HR program comparison**





## C. Transplant Information

### Table C7L. Adult (18+) 1-year survival with a functioning living donor graft

Single organ transplants performed between 07/01/2021 and 12/31/2023

Deaths and retransplants are considered graft failures

This center did not perform any  
transplants relevant to  
this table during  
07/01/2021-12/31/2023

### Figure C5L. Adult (18+) 1-year living donor graft failure HR estimate

This center did not perform any  
transplants relevant to  
this figure during  
07/01/2021-12/31/2023

### Figure C6L. Adult (18+) 1-year living donor graft failure HR program comparison

This center did not perform any  
transplants relevant to  
this figure during  
07/01/2021-12/31/2023



## C. Transplant Information

**Table C8. Adult (18+) 1-year Conditional survival with a functioning graft**

Single organ transplants performed between 07/01/2021 and 12/31/2023

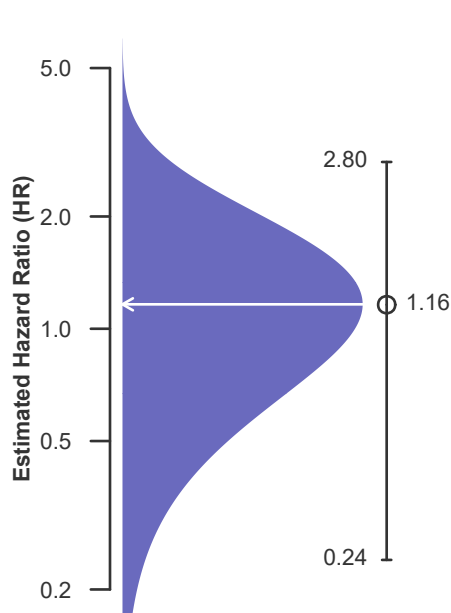
Deaths and retransplants are considered graft failures

	FLBC	U.S.
Number of transplants evaluated	18	20,193
Estimated probability of surviving with a functioning graft at 1 year, among patients with a functioning graft at day 90 & [95% CI] (unadjusted for patient and donor characteristics)	94.44% [91.39%-99.62%]	96.70% [96.59%-96.80%]
Expected probability of surviving with a functioning graft at 1 year, among patients with a functioning graft at day 90 (adjusted for patient and donor characteristics)	97.01%	--
Number of observed graft failures (including deaths) from day 91 through day 365 after transplant	1	585
Number of expected graft failures (including deaths) from day 91 through day 365 after transplant	0.58	--
Estimated hazard ratio*	1.16	--
95% credible interval for the hazard ratio**	[0.24, 2.80]	--

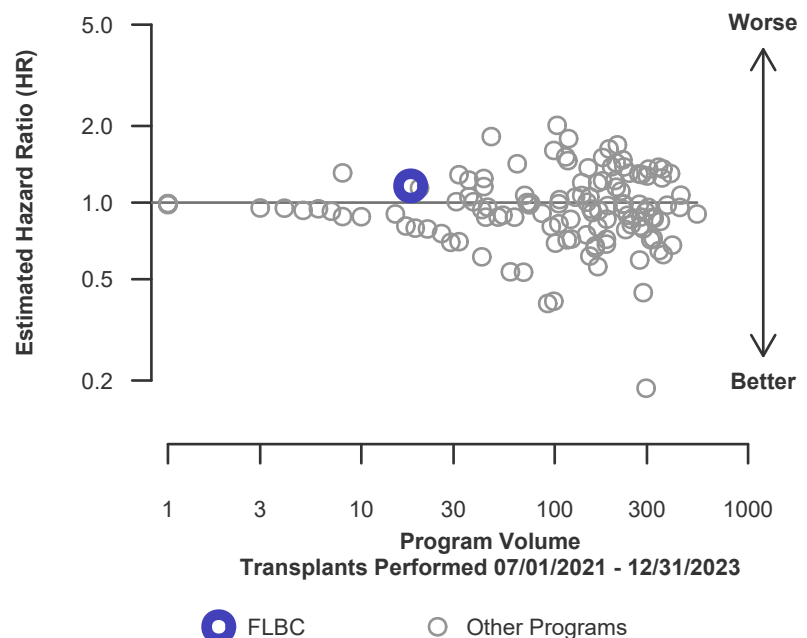
\* The hazard ratio provides an estimate of how Broward Health Medical Center's results compare with what was expected based on modeling the transplant outcomes from all U.S. programs. A ratio above 1 indicates higher than expected graft failure rates (e.g., a hazard ratio of 1.5 would indicate 50% higher risk), and a ratio below 1 indicates lower than expected graft failure rates (e.g., a hazard ratio of 0.75 would indicate 25% lower risk). If FLBC's graft failure rate were precisely the expected rate, the estimated hazard ratio would be 1.0.

\*\* The 95% credible interval, [0.24, 2.80], indicates the location of FLBC's true hazard ratio with 95% probability. The best estimate is 16% higher risk of graft failure compared to an average program, but FLBC's performance could plausibly range from 76% reduced risk up to 180% increased risk.

**Figure C7. Adult (18+) 1-year Conditional graft failure HR estimate**



**Figure C8. Adult (18+) 1-year Conditional graft failure HR program comparison**





## C. Transplant Information

**Table C8D. Adult (18+) 1-year Conditional survival with a functioning deceased donor graft**

Single organ transplants performed between 07/01/2021 and 12/31/2023

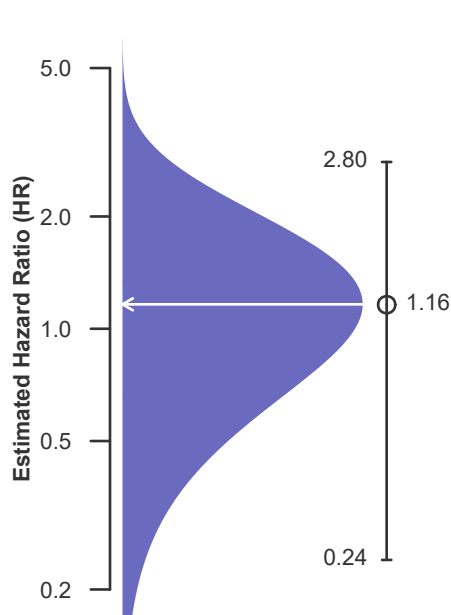
Deaths and retransplants are considered graft failures

	FLBC	U.S.
Number of transplants evaluated	18	18,908
Estimated probability of surviving with a functioning graft at 1 year, among patients with a functioning graft at day 90 & [95% CI] (unadjusted for patient and donor characteristics)	94.44% [91.39%-99.62%]	96.62% [96.51%-96.73%]
Expected probability of surviving with a functioning graft at 1 year, among patients with a functioning graft at day 90 (adjusted for patient and donor characteristics)	97.01%	--
Number of observed graft failures (including deaths) from day 91 through day 365 after transplant	1	560
Number of expected graft failures (including deaths) from day 91 through day 365 after transplant	0.58	--
Estimated hazard ratio*	1.16	--
95% credible interval for the hazard ratio**	[0.24, 2.80]	--

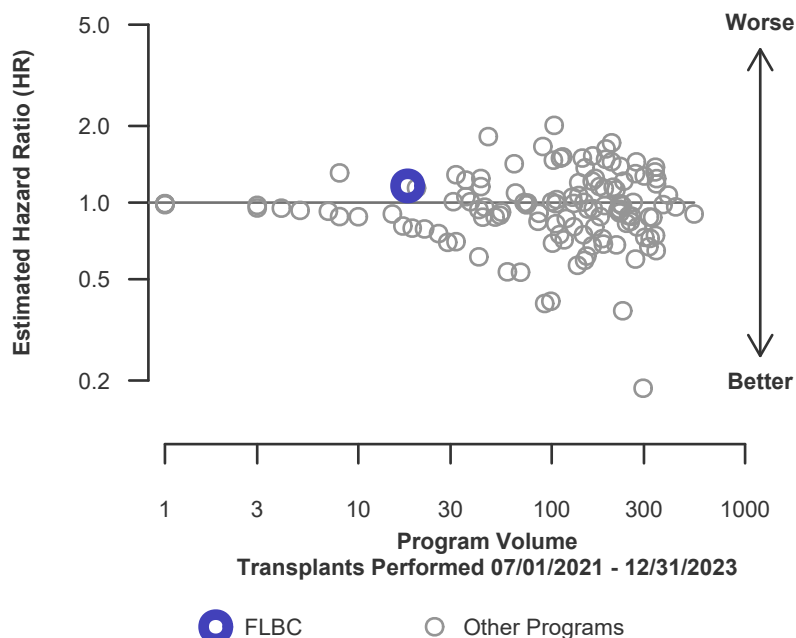
\* The hazard ratio provides an estimate of how Broward Health Medical Center's results compare with what was expected based on modeling the transplant outcomes from all U.S. programs. A ratio above 1 indicates higher than expected graft failure rates (e.g., a hazard ratio of 1.5 would indicate 50% higher risk), and a ratio below 1 indicates lower than expected graft failure rates (e.g., a hazard ratio of 0.75 would indicate 25% lower risk). If FLBC's graft failure rate were precisely the expected rate, the estimated hazard ratio would be 1.0.

\*\* The 95% credible interval, [0.24, 2.80], indicates the location of FLBC's true hazard ratio with 95% probability. The best estimate is 16% higher risk of graft failure compared to an average program, but FLBC's performance could plausibly range from 76% reduced risk up to 180% increased risk.

**Figure C7D. Adult (18+) 1-year Conditional deceased donor graft failure HR estimate**



**Figure C8D. Adult (18+) 1-year Conditional deceased donor graft failure HR program comparison**





## C. Transplant Information

### Table C8L. Adult (18+) 1-year Conditional survival with a functioning living donor graft

Single organ transplants performed between 07/01/2021 and 12/31/2023

Deaths and retransplants are considered graft failures

This center did not perform any  
transplants relevant to  
this table during  
07/01/2021-12/31/2023

### Figure C7L. Adult (18+) 1-year Conditional living donor graft failure HR estimate

This center did not perform any  
transplants relevant to  
this figure during  
07/01/2021-12/31/2023

### Figure C8L. Adult (18+) 1-year Conditional living donor graft failure HR program comparison

This center did not perform any  
transplants relevant to  
this figure during  
07/01/2021-12/31/2023



## C. Transplant Information

**Table C9. Adult (18+) 3-year survival with a functioning graft**

Single organ transplants performed between 01/01/2019 and 03/12/2020, and 06/13/2020 and 06/30/2021

Deaths and retransplants are considered graft failures

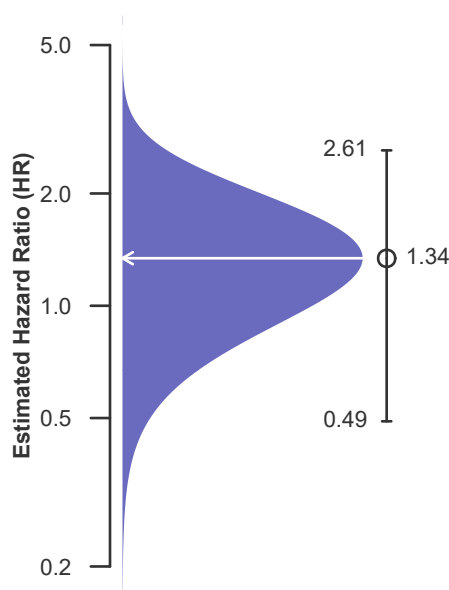
Follow-up ends on 3/12/2020 for recipients transplanted prior to 3/13/2020

	FLBC	U.S.
Number of transplants evaluated	29	17,361
Estimated probability of surviving with a functioning graft at 3 years & [95% CI] (unadjusted for patient and donor characteristics)	83.65% [69.80%-100.00%]	86.01% [85.36%-86.67%]
Expected probability of surviving with a functioning graft at 3 years (adjusted for patient and donor characteristics)	88.31%	--
Number of observed graft failures (including deaths) during the first 3 years after transplant	4	1,701
Number of expected graft failures (including deaths) during the first 3 years after transplant	2.47	--
Estimated hazard ratio*	1.34	--
95% credible interval for the hazard ratio**	[0.49, 2.61]	--

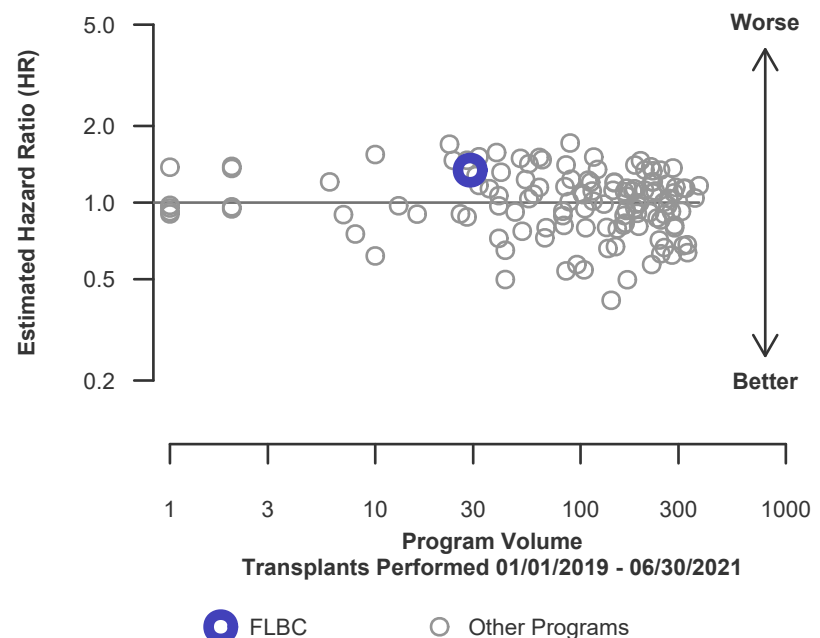
\* The hazard ratio provides an estimate of how Broward Health Medical Center's results compare with what was expected based on modeling the transplant outcomes from all U.S. programs. A ratio above 1 indicates higher than expected graft failure rates (e.g., a hazard ratio of 1.5 would indicate 50% higher risk), and a ratio below 1 indicates lower than expected graft failure rates (e.g., a hazard ratio of 0.75 would indicate 25% lower risk). If FLBC's graft failure rate were precisely the expected rate, the estimated hazard ratio would be 1.0.

\*\* The 95% credible interval, [0.49, 2.61], indicates the location of FLBC's true hazard ratio with 95% probability. The best estimate is 34% higher risk of graft failure compared to an average program, but FLBC's performance could plausibly range from 51% reduced risk up to 161% increased risk.

**Figure C9. Adult (18+) 3-year graft failure HR estimate**



**Figure C10. Adult (18+) 3-year graft failure HR program comparison**





## C. Transplant Information

**Table C9D. Adult (18+) 3-year survival with a functioning deceased donor graft**

Single organ transplants performed between 01/01/2019 and 03/12/2020, and 06/13/2020 and 06/30/2021

Deaths and retransplants are considered graft failures

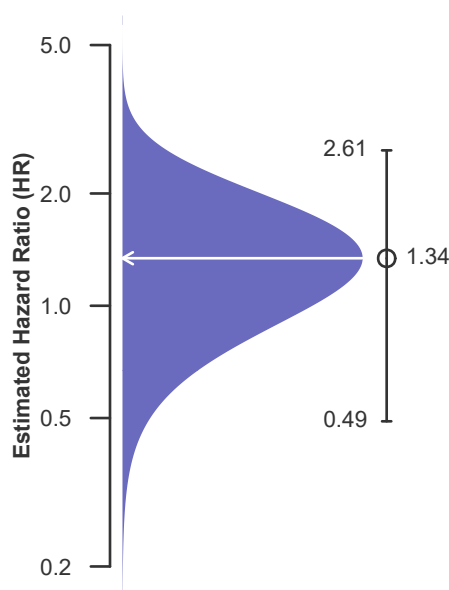
Follow-up ends on 3/12/2020 for recipients transplanted prior to 3/13/2020

	FLBC	U.S.
Number of transplants evaluated	29	16,325
Estimated probability of surviving with a functioning graft at 3 years & [95% CI] (unadjusted for patient and donor characteristics)	83.65% [69.80%-100.00%]	85.90% [85.22%-86.58%]
Expected probability of surviving with a functioning graft at 3 years (adjusted for patient and donor characteristics)	88.31%	--
Number of observed graft failures (including deaths) during the first 3 years after transplant	4	1,611
Number of expected graft failures (including deaths) during the first 3 years after transplant	2.47	--
Estimated hazard ratio*	1.34	--
95% credible interval for the hazard ratio**	[0.49, 2.61]	--

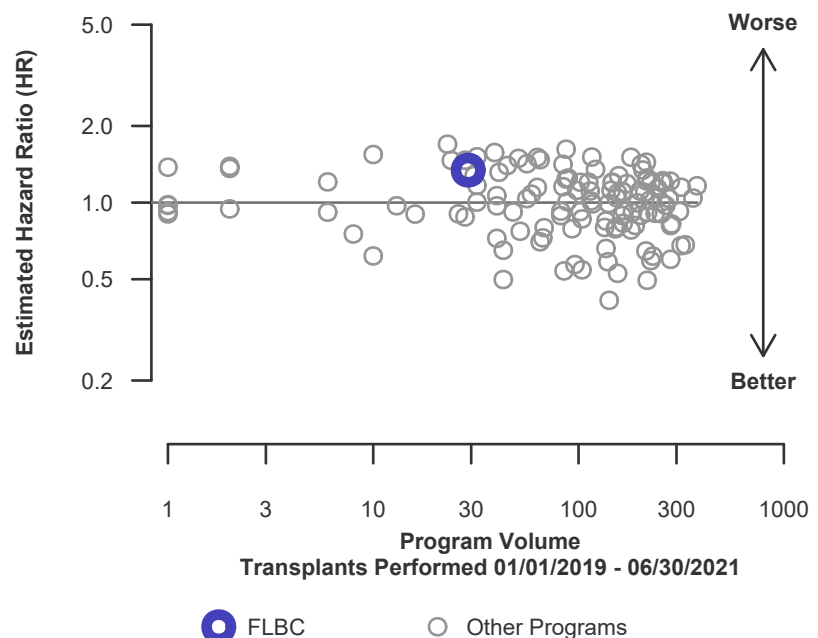
\* The hazard ratio provides an estimate of how Broward Health Medical Center's results compare with what was expected based on modeling the transplant outcomes from all U.S. programs. A ratio above 1 indicates higher than expected graft failure rates (e.g., a hazard ratio of 1.5 would indicate 50% higher risk), and a ratio below 1 indicates lower than expected graft failure rates (e.g., a hazard ratio of 0.75 would indicate 25% lower risk). If FLBC's graft failure rate were precisely the expected rate, the estimated hazard ratio would be 1.0.

\*\* The 95% credible interval, [0.49, 2.61], indicates the location of FLBC's true hazard ratio with 95% probability. The best estimate is 34% higher risk of graft failure compared to an average program, but FLBC's performance could plausibly range from 51% reduced risk up to 161% increased risk.

**Figure C9D. Adult (18+) 3-year deceased donor graft failure HR estimate**



**Figure C10D. Adult (18+) 3-year deceased donor graft failure HR program comparison**





## C. Transplant Information

### Table C9L. Adult (18+) 3-year survival with a functioning living donor graft

Single organ transplants performed between 01/01/2019 and 03/12/2020, and 06/13/2020 and 06/30/2021

Deaths and retransplants are considered graft failures

Follow-up ends on 3/12/2020 for recipients transplanted prior to 3/13/2020

This center did not perform any  
transplants relevant to  
this table during  
01/01/2019-06/30/2021

### Figure C9L. Adult (18+) 3-year living donor graft failure HR estimate

This center did not perform any  
transplants relevant to  
this figure during  
01/01/2019-06/30/2021

### Figure C10L. Adult (18+) 3-year living donor graft failure HR program comparison

This center did not perform any  
transplants relevant to  
this figure during  
01/01/2019-06/30/2021



## C. Transplant Information

### Table C10. Pediatric (<18) 1-month survival with a functioning graft

Single organ transplants performed between 07/01/2021 and 12/31/2023

Deaths and retransplants are considered graft failures

This center did not perform any  
transplants relevant to  
this table during  
07/01/2021-12/31/2023

### Figure C11. Pediatric (<18) 1-month graft failure HR estimate

This center did not perform any  
transplants relevant to  
this figure during  
07/01/2021-12/31/2023

### Figure C12. Pediatric (<18) 1-month graft failure HR program comparison

This center did not perform any  
transplants relevant to  
this figure during  
07/01/2021-12/31/2023



## C. Transplant Information

### Table C10D. Pediatric (<18) 1-month survival with a functioning deceased donor graft

Single organ transplants performed between 07/01/2021 and 12/31/2023

Deaths and retransplants are considered graft failures

This center did not perform any  
transplants relevant to  
this table during  
07/01/2021-12/31/2023

### Figure C11D. Pediatric (<18) 1-month deceased donor graft failure HR estimate

This center did not perform any  
transplants relevant to  
this figure during  
07/01/2021-12/31/2023

### Figure C12D. Pediatric (<18) 1-month deceased donor graft failure HR program comparison

This center did not perform any  
transplants relevant to  
this figure during  
07/01/2021-12/31/2023



## C. Transplant Information

### Table C10L. Pediatric (<18) 1-month survival with a functioning living donor graft

Single organ transplants performed between 07/01/2021 and 12/31/2023

Deaths and retransplants are considered graft failures

This center did not perform any  
transplants relevant to  
this table during  
07/01/2021-12/31/2023

### Figure C11L. Pediatric (<18) 1-month living donor graft failure HR estimate

This center did not perform any  
transplants relevant to  
this figure during  
07/01/2021-12/31/2023

### Figure C12L. Pediatric (<18) 1-month living donor graft failure HR program comparison

This center did not perform any  
transplants relevant to  
this figure during  
07/01/2021-12/31/2023



## C. Transplant Information

### Table C11. Pediatric (<18) 90-Day survival with a functioning graft

Single organ transplants performed between 07/01/2021 and 12/31/2023

Deaths and retransplants are considered graft failures

This center did not perform any  
transplants relevant to  
this table during  
07/01/2021-12/31/2023

### Figure C13. Pediatric (<18) 90-Day graft failure HR estimate

This center did not perform any  
transplants relevant to  
this figure during  
07/01/2021-12/31/2023

### Figure C14. Pediatric (<18) 90-Day graft failure HR program comparison

This center did not perform any  
transplants relevant to  
this figure during  
07/01/2021-12/31/2023



## C. Transplant Information

### Table C11D. Pediatric (<18) 90-Day survival with a functioning deceased donor graft

Single organ transplants performed between 07/01/2021 and 12/31/2023

Deaths and retransplants are considered graft failures

This center did not perform any  
transplants relevant to  
this table during  
07/01/2021-12/31/2023

### Figure C13D. Pediatric (<18) 90-Day deceased donor graft failure HR estimate

This center did not perform any  
transplants relevant to  
this figure during  
07/01/2021-12/31/2023

### Figure C14D. Pediatric (<18) 90-Day deceased donor graft failure HR program comparison

This center did not perform any  
transplants relevant to  
this figure during  
07/01/2021-12/31/2023



## C. Transplant Information

### Table C11L. Pediatric (<18) 90-Day survival with a functioning living donor graft

Single organ transplants performed between 07/01/2021 and 12/31/2023

Deaths and retransplants are considered graft failures

This center did not perform any  
transplants relevant to  
this table during  
07/01/2021-12/31/2023

### Figure C13L. Pediatric (<18) 90-Day living donor graft failure HR estimate

This center did not perform any  
transplants relevant to  
this figure during  
07/01/2021-12/31/2023

### Figure C14L. Pediatric (<18) 90-Day living donor graft failure HR program comparison

This center did not perform any  
transplants relevant to  
this figure during  
07/01/2021-12/31/2023



## C. Transplant Information

### Table C12. Pediatric (<18) 1-year survival with a functioning graft

Single organ transplants performed between 07/01/2021 and 12/31/2023

Deaths and retransplants are considered graft failures

This center did not perform any  
transplants relevant to  
this table during  
07/01/2021-12/31/2023

### Figure C15. Pediatric (<18) 1-year graft failure HR estimate

This center did not perform any  
transplants relevant to  
this figure during  
07/01/2021-12/31/2023

### Figure C16. Pediatric (<18) 1-year graft failure HR program comparison

This center did not perform any  
transplants relevant to  
this figure during  
07/01/2021-12/31/2023



## C. Transplant Information

### Table C12D. Pediatric (<18) 1-year survival with a functioning deceased donor graft

Single organ transplants performed between 07/01/2021 and 12/31/2023

Deaths and retransplants are considered graft failures

This center did not perform any  
transplants relevant to  
this table during  
07/01/2021-12/31/2023

### Figure C15D. Pediatric (<18) 1-year deceased donor graft failure HR estimate

This center did not perform any  
transplants relevant to  
this figure during  
07/01/2021-12/31/2023

### Figure C16D. Pediatric (<18) 1-year deceased donor graft failure HR program comparison

This center did not perform any  
transplants relevant to  
this figure during  
07/01/2021-12/31/2023



## C. Transplant Information

### Table C12L. Pediatric (<18) 1-year survival with a functioning living donor graft

Single organ transplants performed between 07/01/2021 and 12/31/2023

Deaths and retransplants are considered graft failures

This center did not perform any  
transplants relevant to  
this table during  
07/01/2021-12/31/2023

### Figure C15L. Pediatric (<18) 1-year living donor graft failure HR estimate

This center did not perform any  
transplants relevant to  
this figure during  
07/01/2021-12/31/2023

### Figure C16L. Pediatric (<18) 1-year living donor graft failure HR program comparison

This center did not perform any  
transplants relevant to  
this figure during  
07/01/2021-12/31/2023



## C. Transplant Information

### Table C13. Pediatric (<18) 1-year Conditional survival with a functioning graft

Single organ transplants performed between 07/01/2021 and 12/31/2023

Deaths and retransplants are considered graft failures

This center did not perform any  
transplants relevant to  
this table during  
07/01/2021-12/31/2023

### Figure C17. Pediatric (<18) 1-year Conditional graft failure HR estimate

This center did not perform any  
transplants relevant to  
this figure during  
07/01/2021-12/31/2023

### Figure C18. Pediatric (<18) 1-year Conditional graft failure HR program comparison

This center did not perform any  
transplants relevant to  
this figure during  
07/01/2021-12/31/2023



## C. Transplant Information

### Table C13D. Pediatric (<18) 1-year Conditional survival with a functioning deceased donor graft

Single organ transplants performed between 07/01/2021 and 12/31/2023

Deaths and retransplants are considered graft failures

This center did not perform any  
transplants relevant to  
this table during  
07/01/2021-12/31/2023

### Figure C17D. Pediatric (<18) 1-year Conditional deceased donor graft failure HR estimate

This center did not perform any  
transplants relevant to  
this figure during  
07/01/2021-12/31/2023

### Figure C18D. Pediatric (<18) 1-year Conditional deceased donor graft failure HR program comparison

This center did not perform any  
transplants relevant to  
this figure during  
07/01/2021-12/31/2023



## C. Transplant Information

### Table C13L. Pediatric (<18) 1-year Conditional survival with a functioning living donor graft

Single organ transplants performed between 07/01/2021 and 12/31/2023

Deaths and retransplants are considered graft failures

This center did not perform any  
transplants relevant to  
this table during  
07/01/2021-12/31/2023

### Figure C17L. Pediatric (<18) 1-year Conditional living donor graft failure HR estimate

This center did not perform any  
transplants relevant to  
this figure during  
07/01/2021-12/31/2023

### Figure C18L. Pediatric (<18) 1-year Conditional living donor graft failure HR program comparison

This center did not perform any  
transplants relevant to  
this figure during  
07/01/2021-12/31/2023



## C. Transplant Information

### Table C14. Pediatric (<18) 3-year survival with a functioning graft

Single organ transplants performed between 01/01/2019 and 03/12/2020, and 06/13/2020 and 06/30/2021

Deaths and retransplants are considered graft failures

Follow-up ends on 3/12/2020 for recipients transplanted prior to 3/13/2020

This center did not perform any  
transplants relevant to  
this table during  
01/01/2019-06/30/2021

### Figure C19. Pediatric (<18) 3-year graft failure HR estimate

This center did not perform any  
transplants relevant to  
this figure during  
01/01/2019-06/30/2021

### Figure C20. Pediatric (<18) 3-year graft failure HR program comparison

This center did not perform any  
transplants relevant to  
this figure during  
01/01/2019-06/30/2021



## C. Transplant Information

### Table C14D. Pediatric (<18) 3-year survival with a functioning deceased donor graft

Single organ transplants performed between 01/01/2019 and 03/12/2020, and 06/13/2020 and 06/30/2021

Deaths and retransplants are considered graft failures

Follow-up ends on 3/12/2020 for recipients transplanted prior to 3/13/2020

This center did not perform any  
transplants relevant to  
this table during  
01/01/2019-06/30/2021

### Figure C19D. Pediatric (<18) 3-year deceased donor graft failure HR estimate

This center did not perform any  
transplants relevant to  
this figure during  
01/01/2019-06/30/2021

### Figure C20D. Pediatric (<18) 3-year deceased donor graft failure HR program comparison

This center did not perform any  
transplants relevant to  
this figure during  
01/01/2019-06/30/2021



## C. Transplant Information

### Table C14L. Pediatric (<18) 3-year survival with a functioning living donor graft

Single organ transplants performed between 01/01/2019 and 03/12/2020, and 06/13/2020 and 06/30/2021

Deaths and retransplants are considered graft failures

Follow-up ends on 3/12/2020 for recipients transplanted prior to 3/13/2020

This center did not perform any  
transplants relevant to  
this table during  
01/01/2019-06/30/2021

### Figure C19L. Pediatric (<18) 3-year living donor graft failure HR estimate

This center did not perform any  
transplants relevant to  
this figure during  
01/01/2019-06/30/2021

### Figure C20L. Pediatric (<18) 3-year living donor graft failure HR program comparison

This center did not perform any  
transplants relevant to  
this figure during  
01/01/2019-06/30/2021



## C. Transplant Information

**Table C15. Adult (18+) 1-month patient survival**

Single organ transplants performed between 07/01/2021 and 12/31/2023

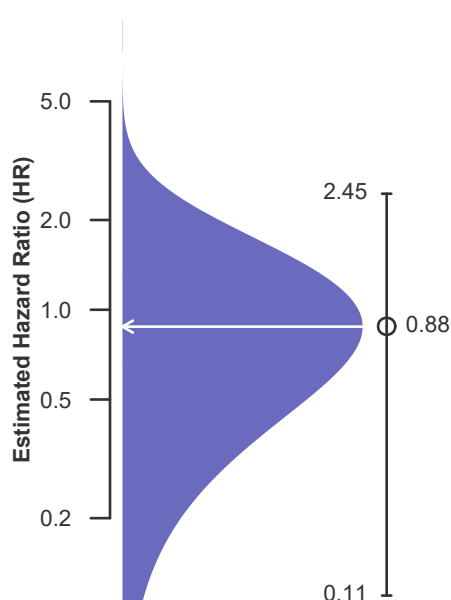
Retransplants excluded

	FLBC	U.S.
Number of transplants evaluated	20	20,474
Estimated probability of surviving at 1 month & [95% CI] (unadjusted for patient and donor characteristics)	100.00% [100.00%-100.00%]	98.25% [98.07%-98.43%]
Expected probability of surviving at 1 month (adjusted for patient and donor characteristics)	98.62%	--
Number of observed deaths during the first month after transplant	0	358
Number of expected deaths during the first month after transplant	0.28	--
Estimated hazard ratio*	0.88	--
95% credible interval for the hazard ratio**	[0.11, 2.45]	--

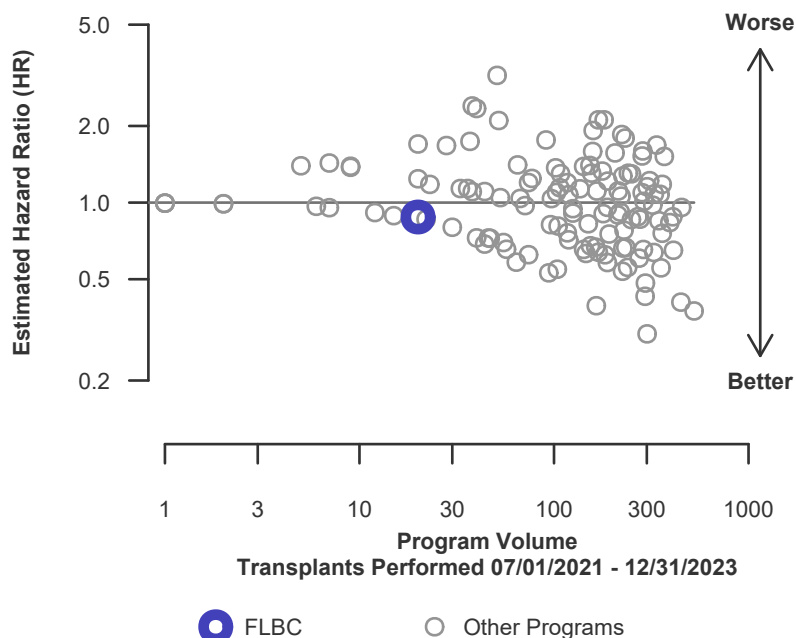
\* The hazard ratio provides an estimate of how Broward Health Medical Center's results compare with what was expected based on modeling the transplant outcomes from all U.S. programs. A ratio above 1 indicates higher than expected patient death rates (e.g., a hazard ratio of 1.5 would indicate 50% higher risk), and a ratio below 1 indicates lower than expected patient death rates (e.g., a hazard ratio of 0.75 would indicate 25% lower risk). If FLBC's patient death rate were precisely the expected rate, the estimated hazard ratio would be 1.0.

\*\* The 95% credible interval, [0.11, 2.45], indicates the location of FLBC's true hazard ratio with 95% probability. The best estimate is 12% lower risk of patient death compared to an average program, but FLBC's performance could plausibly range from 89% reduced risk up to 145% increased risk.

**Figure C21. Adult (18+) 1-month patient death HR estimate**



**Figure C22. Adult (18+) 1-month patient death HR program comparison**





## C. Transplant Information

**Table C15D. Adult (18+) 1-month patient survival (deceased donor graft recipients)**

Single organ transplants performed between 07/01/2021 and 12/31/2023

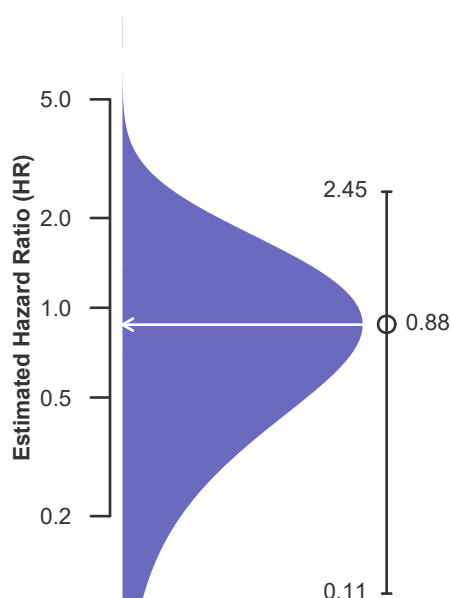
Retransplants excluded

	FLBC	U.S.
Number of transplants evaluated	20	19,149
Estimated probability of surviving at 1 month & [95% CI] (unadjusted for patient and donor characteristics)	100.00% [100.00%-100.00%]	98.21% [98.02%-98.40%]
Expected probability of surviving at 1 month (adjusted for patient and donor characteristics)	98.62%	--
Number of observed deaths during the first month after transplant	0	343
Number of expected deaths during the first month after transplant	0.28	--
Estimated hazard ratio*	0.88	--
95% credible interval for the hazard ratio**	[0.11, 2.45]	--

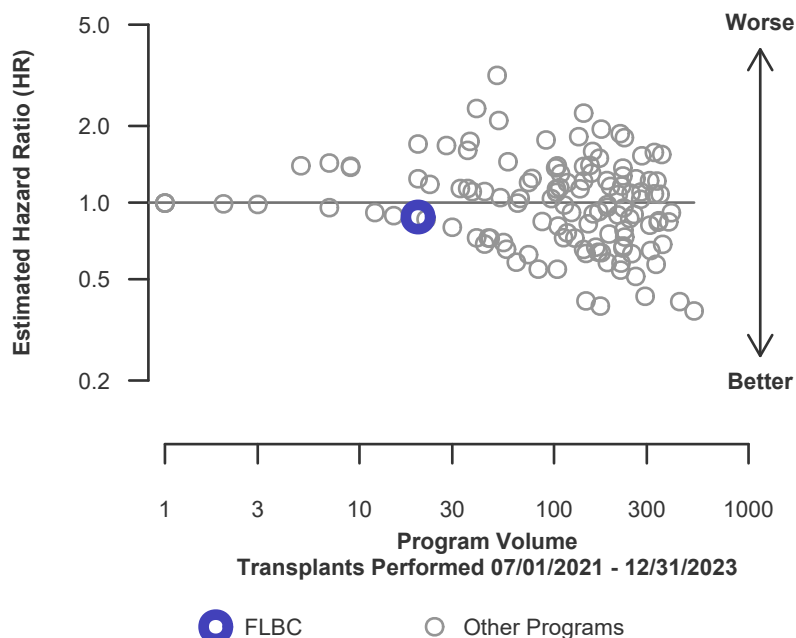
\* The hazard ratio provides an estimate of how Broward Health Medical Center's results compare with what was expected based on modeling the transplant outcomes from all U.S. programs. A ratio above 1 indicates higher than expected patient death rates (e.g., a hazard ratio of 1.5 would indicate 50% higher risk), and a ratio below 1 indicates lower than expected patient death rates (e.g., a hazard ratio of 0.75 would indicate 25% lower risk). If FLBC's patient death rate were precisely the expected rate, the estimated hazard ratio would be 1.0.

\*\* The 95% credible interval, [0.11, 2.45], indicates the location of FLBC's true hazard ratio with 95% probability. The best estimate is 12% lower risk of patient death compared to an average program, but FLBC's performance could plausibly range from 89% reduced risk up to 145% increased risk.

**Figure C21D. Adult (18+) 1-month patient death HR estimate (deceased donor grafts)**



**Figure C22D. Adult (18+) 1-month patient death HR program comparison (deceased donor grafts)**





## C. Transplant Information

### Table C15L. Adult (18+) 1-month patient survival (living donor graft recipients)

Single organ transplants performed between 07/01/2021 and 12/31/2023

Retransplants excluded

This center did not perform any  
transplants relevant to  
this table during  
07/01/2021-12/31/2023

### Figure C21L. Adult (18+) 1-month patient death HR estimate (living donor grafts)

This center did not perform any  
transplants relevant to  
this figure during  
07/01/2021-12/31/2023

### Figure C22L. Adult (18+) 1-month patient death HR program comparison (living donor grafts)

This center did not perform any  
transplants relevant to  
this figure during  
07/01/2021-12/31/2023



## C. Transplant Information

**Table C16. Adult (18+) 1-year patient survival**

Single organ transplants performed between 07/01/2021 and 12/31/2023

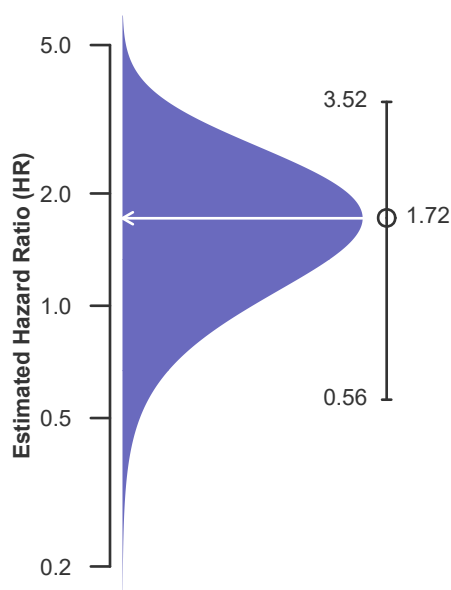
Retransplants excluded

	FLBC	U.S.
Number of transplants evaluated	20	20,474
Estimated probability of surviving at 1 year & [95% CI] (unadjusted for patient and donor characteristics)	85.00% [70.71%-100.00%]	94.17% [93.84%-94.50%]
Expected probability of surviving at 1 year (adjusted for patient and donor characteristics)	95.24%	--
Number of observed deaths during the first year after transplant	3	1,125
Number of expected deaths during the first year after transplant	0.91	--
Estimated hazard ratio*	1.72	--
95% credible interval for the hazard ratio**	[0.56, 3.52]	--

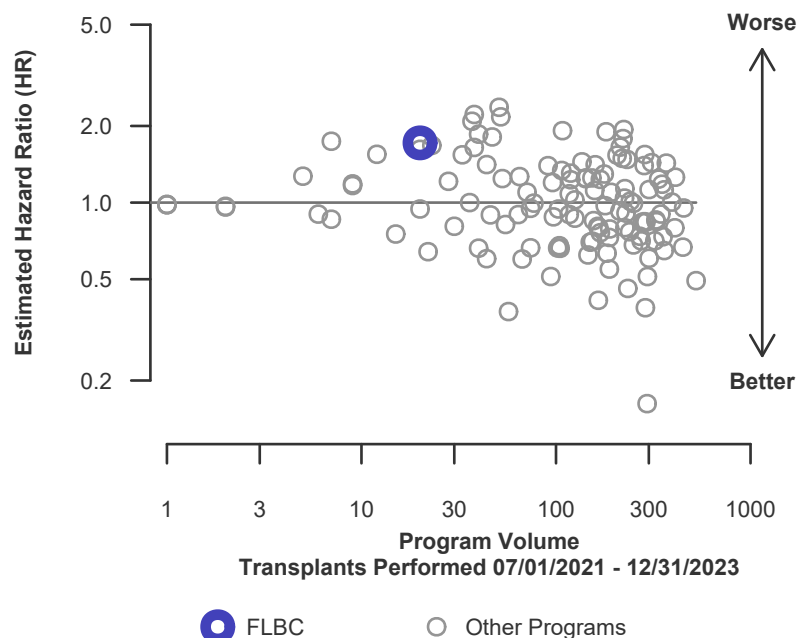
\* The hazard ratio provides an estimate of how Broward Health Medical Center's results compare with what was expected based on modeling the transplant outcomes from all U.S. programs. A ratio above 1 indicates higher than expected patient death rates (e.g., a hazard ratio of 1.5 would indicate 50% higher risk), and a ratio below 1 indicates lower than expected patient death rates (e.g., a hazard ratio of 0.75 would indicate 25% lower risk). If FLBC's patient death rate were precisely the expected rate, the estimated hazard ratio would be 1.0.

\*\* The 95% credible interval, [0.56, 3.52], indicates the location of FLBC's true hazard ratio with 95% probability. The best estimate is 72% higher risk of patient death compared to an average program, but FLBC's performance could plausibly range from 44% reduced risk up to 252% increased risk.

**Figure C23. Adult (18+) 1-year patient death HR estimate**



**Figure C24. Adult (18+) 1-year patient death HR program comparison**





## C. Transplant Information

**Table C16D. Adult (18+) 1-year patient survival (deceased donor graft recipients)**

Single organ transplants performed between 07/01/2021 and 12/31/2023

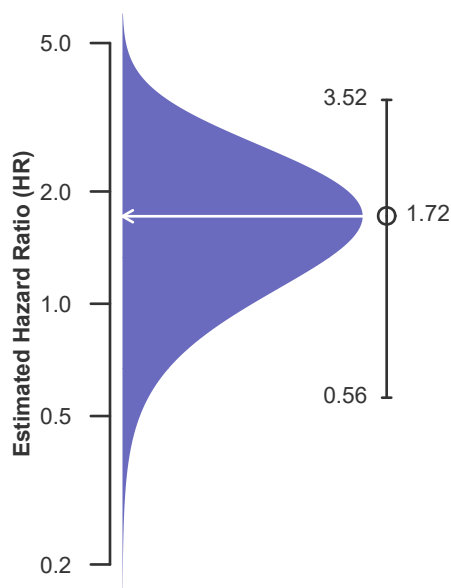
Retransplants excluded

	FLBC	U.S.
Number of transplants evaluated	20	19,149
Estimated probability of surviving at 1 year & [95% CI] (unadjusted for patient and donor characteristics)	85.00% [70.71%-100.00%]	94.03% [93.68%-94.38%]
Expected probability of surviving at 1 year (adjusted for patient and donor characteristics)	95.24%	--
Number of observed deaths during the first year after transplant	3	1,078
Number of expected deaths during the first year after transplant	0.91	--
Estimated hazard ratio*	1.72	--
95% credible interval for the hazard ratio**	[0.56, 3.52]	--

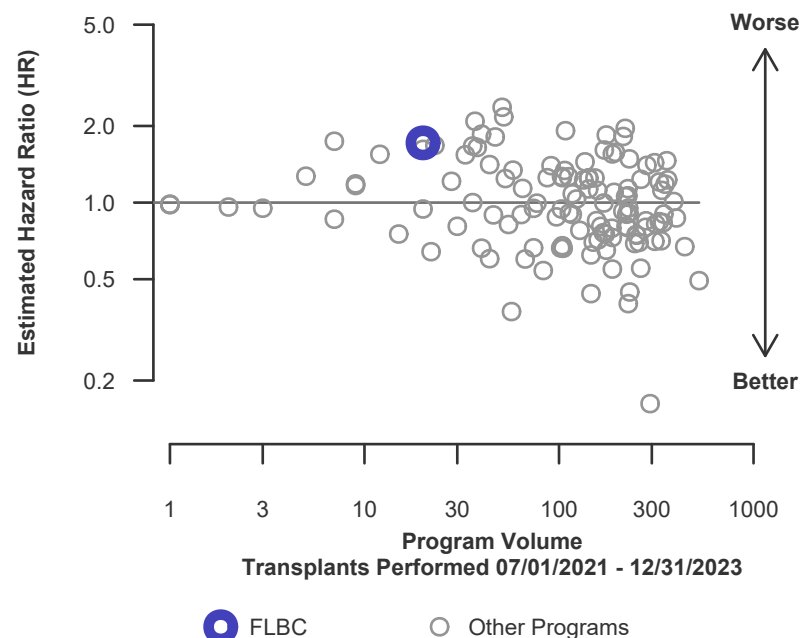
\* The hazard ratio provides an estimate of how Broward Health Medical Center's results compare with what was expected based on modeling the transplant outcomes from all U.S. programs. A ratio above 1 indicates higher than expected patient death rates (e.g., a hazard ratio of 1.5 would indicate 50% higher risk), and a ratio below 1 indicates lower than expected patient death rates (e.g., a hazard ratio of 0.75 would indicate 25% lower risk). If FLBC's patient death rate were precisely the expected rate, the estimated hazard ratio would be 1.0.

\*\* The 95% credible interval, [0.56, 3.52], indicates the location of FLBC's true hazard ratio with 95% probability. The best estimate is 72% higher risk of patient death compared to an average program, but FLBC's performance could plausibly range from 44% reduced risk up to 252% increased risk.

**Figure C23D. Adult (18+) 1-year patient death HR estimate (deceased donor grafts)**



**Figure C24D. Adult (18+) 1-year patient death HR program comparison (deceased donor grafts)**





## C. Transplant Information

### Table C16L. Adult (18+) 1-year patient survival (living donor graft recipients)

Single organ transplants performed between 07/01/2021 and 12/31/2023

Retransplants excluded

This center did not perform any  
transplants relevant to  
this table during  
07/01/2021-12/31/2023

### Figure C23L. Adult (18+) 1-year patient death HR estimate (living donor grafts)

This center did not perform any  
transplants relevant to  
this figure during  
07/01/2021-12/31/2023

### Figure C24L. Adult (18+) 1-year patient death HR program comparison (living donor grafts)

This center did not perform any  
transplants relevant to  
this figure during  
07/01/2021-12/31/2023



## C. Transplant Information

**Table C17. Adult (18+) 3-year patient survival**

Single organ transplants performed between 01/01/2019 and 03/12/2020, and 06/13/2020 and 06/30/2021

Retransplants excluded

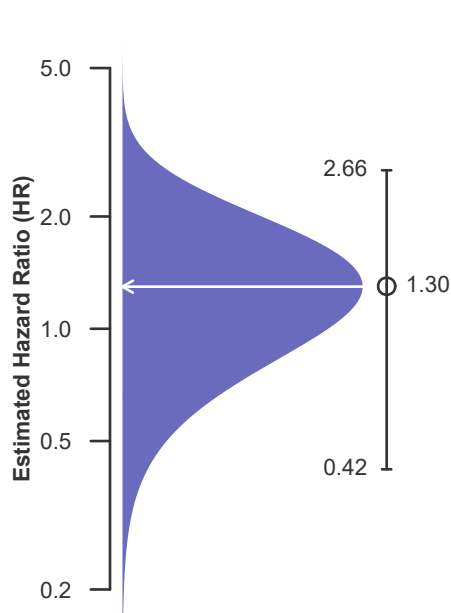
Follow-up ends on 3/12/2020 for recipients transplanted prior to 3/13/2020

	FLBC	U.S.
Number of transplants evaluated	27	16,722
Estimated probability of surviving at 3 years & [95% CI] (unadjusted for patient and donor characteristics)	86.35% [72.82%-100.00%]	88.25% [87.62%-88.89%]
Expected probability of surviving at 3 years (adjusted for patient and donor characteristics)	89.86%	--
Number of observed deaths during the first 3 years after transplant	3	1,311
Number of expected deaths during the first 3 years after transplant	1.86	--
Estimated hazard ratio*	1.30	--
95% credible interval for the hazard ratio**	[0.42, 2.66]	--

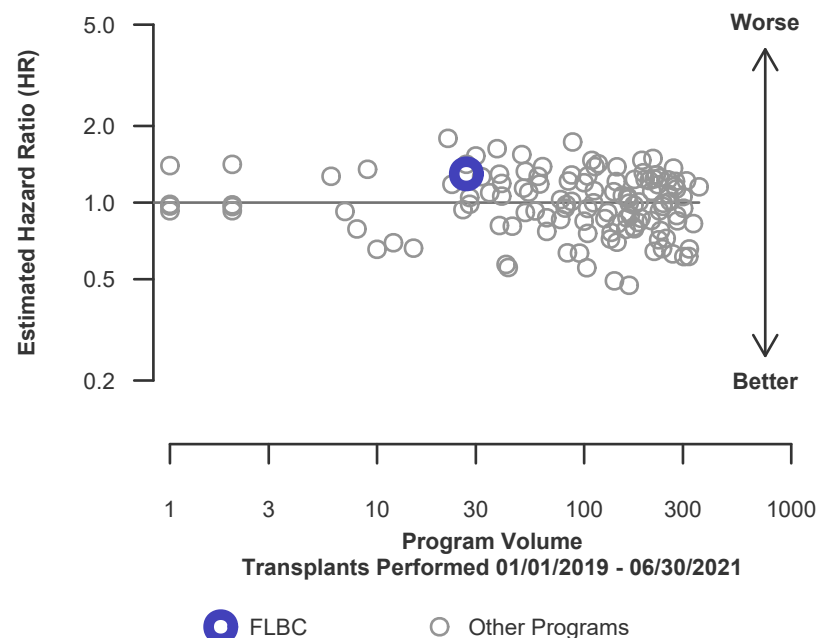
\* The hazard ratio provides an estimate of how Broward Health Medical Center's results compare with what was expected based on modeling the transplant outcomes from all U.S. programs. A ratio above 1 indicates higher than expected patient death rates (e.g., a hazard ratio of 1.5 would indicate 50% higher risk), and a ratio below 1 indicates lower than expected patient death rates (e.g., a hazard ratio of 0.75 would indicate 25% lower risk). If FLBC's patient death rate were precisely the expected rate, the estimated hazard ratio would be 1.0.

\*\* The 95% credible interval, [0.42, 2.66], indicates the location of FLBC's true hazard ratio with 95% probability. The best estimate is 30% higher risk of patient death compared to an average program, but FLBC's performance could plausibly range from 58% reduced risk up to 166% increased risk.

**Figure C25. Adult (18+) 3-year patient death HR estimate**



**Figure C26. Adult (18+) 3-year patient death HR program comparison**





## C. Transplant Information

**Table C17D. Adult (18+) 3-year patient survival (deceased donor graft recipients)**

Single organ transplants performed between 01/01/2019 and 03/12/2020, and 06/13/2020 and 06/30/2021

Retransplants excluded

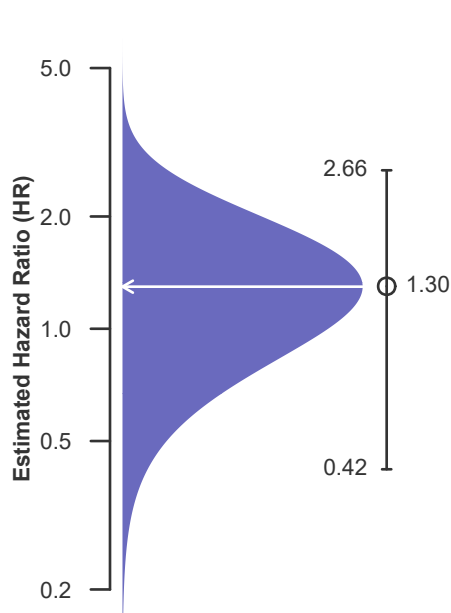
Follow-up ends on 3/12/2020 for recipients transplanted prior to 3/13/2020

	FLBC	U.S.
Number of transplants evaluated	27	15,697
Estimated probability of surviving at 3 years & [95% CI] (unadjusted for patient and donor characteristics)	86.35% [72.82%-100.00%]	88.08% [87.42%-88.74%]
Expected probability of surviving at 3 years (adjusted for patient and donor characteristics)	89.86%	--
Number of observed deaths during the first 3 years after transplant	3	1,249
Number of expected deaths during the first 3 years after transplant	1.86	--
Estimated hazard ratio*	1.30	--
95% credible interval for the hazard ratio**	[0.42, 2.66]	--

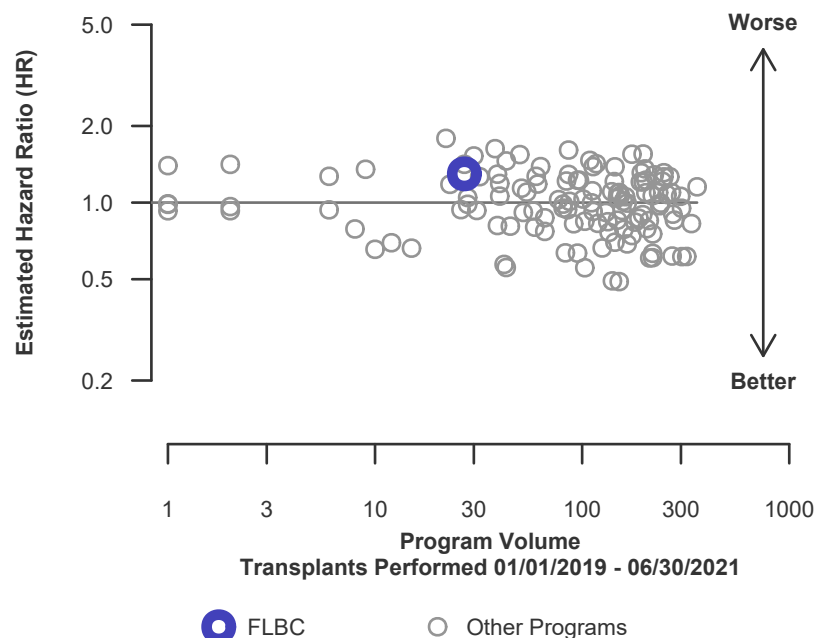
\* The hazard ratio provides an estimate of how Broward Health Medical Center's results compare with what was expected based on modeling the transplant outcomes from all U.S. programs. A ratio above 1 indicates higher than expected patient death rates (e.g., a hazard ratio of 1.5 would indicate 50% higher risk), and a ratio below 1 indicates lower than expected patient death rates (e.g., a hazard ratio of 0.75 would indicate 25% lower risk). If FLBC's patient death rate were precisely the expected rate, the estimated hazard ratio would be 1.0.

\*\* The 95% credible interval, [0.42, 2.66], indicates the location of FLBC's true hazard ratio with 95% probability. The best estimate is 30% higher risk of patient death compared to an average program, but FLBC's performance could plausibly range from 58% reduced risk up to 166% increased risk.

**Figure C25D. Adult (18+) 3-year patient death HR estimate (deceased donor grafts)**



**Figure C26D. Adult (18+) 3-year patient death HR program comparison (deceased donor grafts)**





## C. Transplant Information

### Table C17L. Adult (18+) 3-year patient survival (living donor graft recipients)

Single organ transplants performed between 01/01/2019 and 03/12/2020, and 06/13/2020 and 06/30/2021

Retransplants excluded

Follow-up ends on 3/12/2020 for recipients transplanted prior to 3/13/2020

This center did not perform any  
transplants relevant to  
this table during  
01/01/2019-06/30/2021

### Figure C25L. Adult (18+) 3-year patient death HR estimate (living donor grafts)

This center did not perform any  
transplants relevant to  
this figure during  
01/01/2019-06/30/2021

### Figure C26L. Adult (18+) 3-year patient death HR program comparison (living donor grafts)

This center did not perform any  
transplants relevant to  
this figure during  
01/01/2019-06/30/2021



## C. Transplant Information

### Table C18. Pediatric (<18) 1-month patient survival

Single organ transplants performed between 07/01/2021 and 12/31/2023

Retransplants excluded

This center did not perform any  
transplants relevant to  
this table during  
07/01/2021-12/31/2023

### Figure C27. Pediatric (<18) 1-month patient death HR estimate

This center did not perform any  
transplants relevant to  
this figure during  
07/01/2021-12/31/2023

### Figure C28. Pediatric (<18) 1-month patient death HR program comparison

This center did not perform any  
transplants relevant to  
this figure during  
07/01/2021-12/31/2023



C. Transplant Information

**Table C18D. Pediatric (<18) 1-month patient survival (deceased donor graft recipients)**  
Single organ transplants performed between 07/01/2021 and 12/31/2023  
Retransplants excluded

This center did not perform any  
transplants relevant to  
this table during  
07/01/2021-12/31/2023

**Figure C27D. Pediatric (<18)  
1-month patient death HR  
estimate (deceased donor grafts)**

This center did not perform any  
transplants relevant to  
this figure during  
07/01/2021-12/31/2023

**Figure C28D. Pediatric (<18) 1-month patient death HR  
program comparison (deceased donor grafts)**

This center did not perform any  
transplants relevant to  
this figure during  
07/01/2021-12/31/2023



## C. Transplant Information

### Table C18L. Pediatric (<18) 1-month patient survival (living donor graft recipients)

Single organ transplants performed between 07/01/2021 and 12/31/2023

Retransplants excluded

This center did not perform any  
transplants relevant to  
this table during  
07/01/2021-12/31/2023

### Figure C27L. Pediatric (<18) 1-month patient death HR estimate (living donor grafts)

This center did not perform any  
transplants relevant to  
this figure during  
07/01/2021-12/31/2023

### Figure C28L. Pediatric (<18) 1-month patient death HR program comparison (living donor grafts)

This center did not perform any  
transplants relevant to  
this figure during  
07/01/2021-12/31/2023



## C. Transplant Information

### Table C19. Pediatric (<18) 1-year patient survival

Single organ transplants performed between 07/01/2021 and 12/31/2023

Retransplants excluded

This center did not perform any  
transplants relevant to  
this table during  
07/01/2021-12/31/2023

### Figure C29. Pediatric (<18) 1-year patient death HR estimate

This center did not perform any  
transplants relevant to  
this figure during  
07/01/2021-12/31/2023

### Figure C30. Pediatric (<18) 1-year patient death HR program comparison

This center did not perform any  
transplants relevant to  
this figure during  
07/01/2021-12/31/2023



## C. Transplant Information

### Table C19D. Pediatric (<18) 1-year patient survival (deceased donor graft recipients)

Single organ transplants performed between 07/01/2021 and 12/31/2023

Retransplants excluded

This center did not perform any  
transplants relevant to  
this table during  
07/01/2021-12/31/2023

### Figure C29D. Pediatric (<18) 1-year patient death HR estimate (deceased donor grafts)

This center did not perform any  
transplants relevant to  
this figure during  
07/01/2021-12/31/2023

### Figure C30D. Pediatric (<18) 1-year patient death HR program comparison (deceased donor grafts)

This center did not perform any  
transplants relevant to  
this figure during  
07/01/2021-12/31/2023



## C. Transplant Information

### Table C19L. Pediatric (<18) 1-year patient survival (living donor graft recipients)

Single organ transplants performed between 07/01/2021 and 12/31/2023

Retransplants excluded

This center did not perform any  
transplants relevant to  
this table during  
07/01/2021-12/31/2023

### Figure C29L. Pediatric (<18) 1-year patient death HR estimate (living donor grafts)

This center did not perform any  
transplants relevant to  
this figure during  
07/01/2021-12/31/2023

### Figure C30L. Pediatric (<18) 1-year patient death HR program comparison (living donor grafts)

This center did not perform any  
transplants relevant to  
this figure during  
07/01/2021-12/31/2023



## C. Transplant Information

### Table C20. Pediatric (<18) 3-year patient survival

Single organ transplants performed between 01/01/2019 and 03/12/2020, and 06/13/2020 and 06/30/2021

Retransplants excluded

Follow-up ends on 3/12/2020 for recipients transplanted prior to 3/13/2020

This center did not perform any  
transplants relevant to  
this table during  
01/01/2019-06/30/2021

### Figure C31. Pediatric (<18) 3-year patient death HR estimate

This center did not perform any  
transplants relevant to  
this figure during  
01/01/2019-06/30/2021

### Figure C32. Pediatric (<18) 3-year patient death HR program comparison

This center did not perform any  
transplants relevant to  
this figure during  
01/01/2019-06/30/2021



## C. Transplant Information

### Table C20D. Pediatric (<18) 3-year patient survival (deceased donor graft recipients)

Single organ transplants performed between 01/01/2019 and 03/12/2020, and 06/13/2020 and 06/30/2021

Retransplants excluded

Follow-up ends on 3/12/2020 for recipients transplanted prior to 3/13/2020

This center did not perform any  
transplants relevant to  
this table during  
01/01/2019-06/30/2021

### Figure C31D. Pediatric (<18) 3-year patient death HR estimate (deceased donor grafts)

This center did not perform any  
transplants relevant to  
this figure during  
01/01/2019-06/30/2021

### Figure C32D. Pediatric (<18) 3-year patient death HR program comparison (deceased donor grafts)

This center did not perform any  
transplants relevant to  
this figure during  
01/01/2019-06/30/2021



## C. Transplant Information

### Table C20L. Pediatric (<18) 3-year patient survival (living donor graft recipients)

Single organ transplants performed between 01/01/2019 and 03/12/2020, and 06/13/2020 and 06/30/2021

Retransplants excluded

Follow-up ends on 3/12/2020 for recipients transplanted prior to 3/13/2020

This center did not perform any  
transplants relevant to  
this table during  
01/01/2019-06/30/2021

### Figure C31L. Pediatric (<18) 3-year patient death HR estimate (living donor grafts)

This center did not perform any  
transplants relevant to  
this figure during  
01/01/2019-06/30/2021

### Figure C32L. Pediatric (<18) 3-year patient death HR program comparison (living donor grafts)

This center did not perform any  
transplants relevant to  
this figure during  
01/01/2019-06/30/2021



---

## C. Transplant Information

---

**Table C21. Multi-organ transplant graft survival: 07/01/2021 - 12/31/2023**

### Adult (18+) Transplants

No adult (18+) multi-organ transplants were performed

### Pediatric (<18) Transplants

No pediatric (<18) multi-organ transplants were performed

---

**Table C22. Multi-organ transplant patient survival: 07/01/2021 - 12/31/2023**

### Adult (18+) Transplants

No adult (18+) multi-organ transplants were performed

### Pediatric (<18) Transplants

No pediatric (<18) multi-organ transplants were performed



## D. Living Donor Information

Table D1. Living donor summary: 07/01/2021 - 06/30/2024

Living Donor Follow-Up	This Center			United States		
	07/2021- 06/2022	07/2022- 06/2023	07/2023- 12/2023	07/2021- 06/2022	07/2022- 06/2023	07/2023- 12/2023
<b>Number of Living Donors</b>	--	--	--	--	--	--
<b>6-Month Follow-Up</b>						
Donors due for follow-up	--	--	--	--	--	--
Timely clinical data	-- --%	-- --%	-- --%	-- --%	-- --%	-- --%
Timely lab data	-- --%	-- --%	-- --%	-- --%	-- --%	-- --%
<b>12-Month Follow-Up</b>						
Donors due for follow-up	--	--		--	--	
Timely clinical data	-- --%	-- --%		-- --%	-- --%	
Timely lab data	-- --%	-- --%		-- --%	-- --%	
<b>24-Month Follow-Up</b>						
Donors due for follow-up	--			--		
Timely clinical data	-- --%			-- --%		
Timely lab data	-- --%			-- --%		

Follow-up forms due during the COVID-19 amnesty period from 3/13/2020-3/31/2021 are not included in timely clinical and lab data calculations