



COVID-19 Guide

Adjustments to Transplant Program and OPO Evaluation Metrics

The Scientific Registry of Transplant Recipients (SRTR), under contract from the Health Resources and Services Administration (HRSA), is charged with evaluating the performance of the nation's transplant system through publication of semi-annual transplant program-specific reports (PSRs) and organ procurement organization (OPO)-specific reports (OSRs). These reports contain performance metrics covering various time periods. For OPOs, these metrics include eligible death conversion rates and deceased donor organ yield. For transplant programs, they include pre-transplant mortality rates (formerly called waitlist mortality rates), transplant rates, organ offer acceptance rates, patient mortality after listing, and 1-month, 90-day, 1-year, 1-year conditional on 90-day, and 3-year posttransplant outcomes including graft survival and patient survival.

In response to the current global pandemic, SRTR modified the evaluation metrics for transplant programs and OPOs for the reports released in January 2021, July 2021, January 2022, July 2022, January 2023 and July 2023. These reports made adjustments to transplant program and OPO performance metrics so that data during the time around the declaration of a national public health emergency on March 13, 2020, were not included in the metrics.

Modifications for the January 2024 reporting cycle were considered at the Analytic Methods Subcommittee of the SRTR Review Committee (SRC) at its meeting on March 24, 2021, and the full SRC meetings April 27, 2021 and on January 11, 2022. Both the Analytic Methods Subcommittee and the full SRC recommended an ongoing carve out of the first quarter of the pandemic (March 13, 2020 through June 12, 2020) from adjusted performance metrics, as detailed below. These recommendations were reviewed by HRSA's Division of Transplantation, which oversees SRTR. HRSA approved these recommendations, which SRTR will implement for the January 2024 reporting cycle. These changes will remain in force beyond the January 2024 reporting cycle, unless otherwise amended:

Posttransplant Outcomes (including 1-month, 90-day, 1-year, 1-year conditional on 90-day, and 3-year graft and patient survival): Evaluation cohorts will exclude transplants performed between March 13, 2020 and June 12, 2020, inclusive of March 13 and June 12. Patients given transplants before March 13, 2020 will have follow-up censored on March 12, 2020. Patients given transplants after June 12, 2020 will resume normal follow-up. Follow-up will not resume for patients given transplants before March 13, 2020 who are alive with function on June 12, 2020; however, this may be reconsidered as SRTR continues to explore moving to a period-prevalent methodology:

1-month, 90-day, 1-year & 1-year conditional on 90-day Patient and Graft Survival Evaluations: Transplants 7/1/2020-12/31/2022, follow-up through 6/30/2023.

3-year Patient and Graft Survival Evaluations: Transplants 1/1/2018-3/12/2020, follow-up through 3/12/2020. Transplants 6/13/2020-6/30/2020; follow-up through 6/30/2023.

Pre-Transplant Mortality Rate (formerly called Waitlist Mortality Rate): These evaluations are based on normal reporting cohorts.

Days after listing (and before transplant) between 7/1/2021 and 6/30/2023.



COVID-19 Guide

Transplant Rate: These evaluations are based on normal reporting cohorts.

Candidates on the waitlist 7/1/2021-6/30/2023.

Overall Rate of Mortality After Listing: These evaluations are based on normal reporting cohorts.

Evaluation period: 7/1/2021-6/30/2023.

Offer Acceptance Rate: These evaluations are based on normal reporting cohorts.

Offers received 7/1/2022-6/30/2023.

These decisions will apply to the evaluations released in the SRTR's semi-annual program-specific reports scheduled for release on January 9, 2024. These changes have been communicated to the leadership of the Organ Procurement and Transplantation Network's (OPTN) Membership and Professional Standards Committee (MSPC). These decisions will then be re-evaluated as more information becomes available in preparation for the release scheduled for July 2024.

As with the July 2023 reports, SRTR will continue to report descriptive data beyond March 12, 2020, e.g., waitlist counts, transplant counts, recipient characteristics, donor counts, donor characteristics, etc., but will alter data for performance evaluation metrics as described above.



User Guide

This report contains a wide range of useful information about the kidney transplant program at UAMS Medical Center. The report has three main sections:

- A. Program Summary
- B. Waiting List Information
- C. Transplant Information

The Program Summary is a one-page summary highlighting characteristics of the program, including the number of candidates on the waiting list, the number of transplants performed at the program, the number of patients being cared for by the program, and patient outcomes, including outcomes while on the waiting list (the transplant rate and the death rate while on the waiting list) and outcomes after transplant (patient and graft survival probabilities). If the program performed transplants in both adults and children, survival probabilities for adults and children (pediatrics) are provided separately. For each of the outcomes measures presented, a comparison is provided showing what would be expected at this program if it were performing as similar programs around the country perform when treating similar patients. More details regarding these outcome measures are provided in Sections B and C of the report.

The Waiting List Information section contains more detailed information on how many candidates are on the waiting list at the program, the types of candidates on the waiting list, how long candidates typically have to wait for a transplant at this program, how frequently candidates successfully receive a transplant, and how often candidates on the waiting list die before receiving a transplant.

Table B1 shows the activity on this program's waiting list during two recent 1-year periods and provides comparisons to all programs within this program's OPTN region (see <http://optn.transplant.hrsa.gov/members/regions.asp> for information on OPTN regions) and the nation as a whole. Tables B2 and B3 describe the candidates on the waiting list at this program, with comparisons to candidates waiting in the same donor service area (OPO/DSA) the OPTN region, and the nation as a whole.

Table B4 shows how many candidates were removed from the waiting list because they received a transplant. The program's transplant rate is calculated as the number of candidates who received a transplant divided by the person-years observed at the program (person-years is a combination of how many candidates were on the waiting list along with how long each candidate was followed since some candidates are not on the waiting list for the entire year). The transplant rate and comparisons to what would be expected at this program are presented in Figures B1 and B2. Figure B1 shows the transplant rate compared to what was expected at this program. The expected transplant rate is an estimate of what we would expect at this program if it were performing transplants at rates similar to other programs in the US with similar candidates on their waiting lists. The expected rate is only an estimate, and is made with a certain level of uncertainty. This uncertainty is shown in Figure B2. Figure B2 displays the ratio of the observed to the expected transplant rate. A ratio of 1 indicates that the observed transplant rate was equal to the expected transplant rate, while a ratio less than 1 indicates the observed rate was lower than expected rate and a ratio greater than 1 indicates the observed rate was higher than the expected rate. However, the level of uncertainty must be considered when interpreting these numbers. The 95% interval is also shown on Figure B2. This interval provides a range within which the true ratio of observed to expected transplant rates is likely to be. If this



User Guide

confidence interval includes (crosses) 1.0, then we cannot say that this program's observed transplant rate is different from what would be expected. The observed transplant rate at this program was 99.6 per 100 person-years. Transplant rates are also provided for adult and pediatric patients separately along with comparisons to adult and pediatric rates in the DSA, the OPTN region, and the nation. Transplant rates are also presented excluding transplants from a living donor (Table B4D and Figures B1D-B3D). Please refer to the PSR Technical Methods documentation available at <http://www.srtr.org> for more detail regarding how expected rates are calculated.

The pre-transplant mortality rate (previously called the waiting list mortality rate) for candidates on the waiting list is presented in Table B5 and Figures B4-B6. These data are presented in the same way as the transplant rate data in the previous section. The intent of this table and figures is to describe risk of death once candidates are listed rather than while they are listed, but before they are transplanted. Therefore, time at risk and deaths after removal from the waiting list for reasons other than transplant, transfer to another transplant program, or recovery (no longer needing a transplant), and before any subsequent transplant, are included. As with transplant rates, mortality rates should be interpreted carefully taking into consideration the interval displayed in Figure B5. For a complete description of how observed and expected mortality rates are calculated, please refer to the technical documentation available at <http://www.srtr.org>.

Survival from listing is presented in Table B6 and Figures B7-B9. These data are presented in the same way as the pre-transplant mortality rate data in the previous section. The intent of this table and figures is to describe risk of death once candidates are listed rather than while they are listed, including after a transplant. As with transplant rates, mortality rates should be interpreted carefully taking into consideration the interval displayed in Figure B8. For a complete description of how observed and expected mortality rates are calculated, please refer to the technical documentation available at <http://www.srtr.org>.

Table B7 presents information on what happens to candidates on the waiting list by three different time points after listing: 6 months, 12 months, and 18 months. The table displays percentages of candidates who have died, been removed from the waiting list, been transplanted, or been transferred or lost-to-follow-up. Tables B8 and B9 provide more detail regarding how many candidates have received a deceased donor transplant by certain time points during the first 3 years after being put on the transplant waiting list. Each row of Tables B8 and B9 presents the percent of candidates who received a deceased donor transplant by each time point. Table B10 presents data on the time it took for different percentages of patients to be transplanted for candidates added to the list between 07/01/2017 and 12/31/2022. The time it took for 5% (the 5th percentile) of patients to receive a transplant at this program was 0.2 months. If "Not Observed" is displayed in the table, then too few candidates received transplants before 06/30/2023 to calculate a particular percentile of transplant times.

Table B11 contains a summary of the offer acceptance practices of the program. The offer acceptance ratio indicates whether the program is more or less likely to accept offers than the average program. If the offer acceptance ratio is greater than 1.0, then the program tends to accept more offers than average; if the offer acceptance ratio is less than 1.0, then the program tends to accept fewer offers than average. Figure B10 shows the distribution of program offer acceptance rates as well as the offer acceptance rate for this program. Figures B11 - B14 similarly show offer acceptance rates for subsets



User Guide

of offers.

The Transplant Information section begins with descriptions of transplant recipients in Tables C1 and C2. Data on recipients of deceased donor transplants are presented (Tables C1D and C2D); if applicable, data on recipients of living donor transplants are presented separately (Tables C1L and C2L). Comparisons to the region and the nation as a whole are provided. A description of the deceased donors used at this program is provided in Table C3D, along with characteristics of living donors in Table C3L, if applicable. Finally, information on the transplant procedure for deceased and living donor transplants is presented in Tables C4D and C4L, respectively.

Starting with Table C5, transplant outcomes are presented along with comparisons to what would be expected at this program and what happened in the nation as a whole. Tables C5-C14 (tables C5-C10 for Pancreas) present information on graft survival (survival of the transplanted organ), with data presented separately for adult and pediatric recipients. Patients are followed from the time of transplant until either failure of the transplanted organ or death, whichever comes first. Please refer to the technical methods for more information on these calculations (<http://www.srtr.org>).

While Tables C5-C14 present data on graft survival, Tables C15-C20 (tables C11-C20 for Pancreas) present information on patient survival. For these tables, patients are followed from the time of transplant until death, regardless of whether the transplant is functioning or the patient required another transplant to survive.

Tables C21 and C22 summarize the multiorgan transplant outcomes at this program. The summary statistics in these tables are descriptive and are not risk-adjusted for different donor and candidate characteristics.

Table D1 shows the rates of follow-up for living donors.

Additional information regarding the technical methods and the risk adjustment models used to estimate expected event rates is available on the SRTR website at <http://www.srtr.org>. We welcome and encourage feedback on these reports. Please feel free to share feedback with the SRTR at the following e-mail: srtr@srtr.org.



Table of Contents

Section	Page
COVID-19 Guide	i
User Guide	iii
A. Program Summary	
Program Summary	1
B. Waiting List Information	
Waiting list activity	2
Demographic characteristics of waiting list candidates	3
Medical characteristics of waiting list candidates	4
Transplant rates	5
Deceased donor transplant rates	6
Pre-transplant mortality rates (formerly called Waiting list mortality rates)	7
Patient survival from listing	8
Waiting list candidate status after listing	9
Percent of candidates with deceased donor transplants: demographic characteristics	10
Percent of candidates with deceased donor transplants: medical characteristics	11
Time to transplant for waiting list candidates	12
Offer acceptance practices	13
C. Transplant Information	
Deceased donor transplant recipient demographic characteristics	15
Living donor transplant recipient demographic characteristics	16
Deceased donor transplant recipient medical characteristics	17
Living donor transplant recipient medical characteristics	18
Deceased donor characteristics	19
Living donor characteristics	20
Deceased donor transplant characteristics	21
Living donor transplant characteristics	22
Graft survival	23
Patient survival	53
Multi-organ transplant graft survival	71
Multi-organ transplant patient survival	71
D. Living Donor Information	
Living donor follow-up summary	72



A. Program Summary

Figure A1. Waiting list and transplant activity

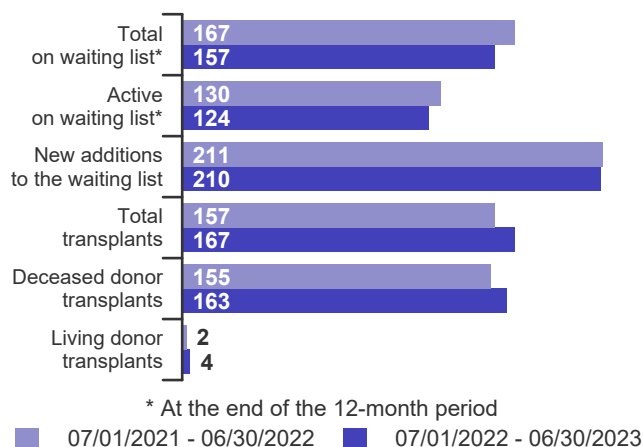


Table A1. Census of transplant recipients

Recipients	07/01/2021-06/30/2022	07/01/2022-06/30/2023
Transplanted at this center	157	167
Followed by this center*	786	928
...transplanted at this program	743	864
...transplanted elsewhere	43	64

* Recipients followed are transplant recipients for whom the center has submitted a post-transplant follow-up form for a transplant that took place before the 12-month interval for each column.

Figure A2. Transplant rates
07/01/2021 - 06/30/2023

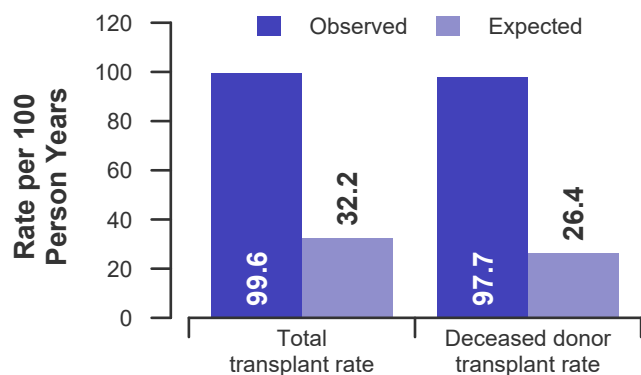


Figure A3. Pre-transplant mortality rates
07/01/2021 - 06/30/2023

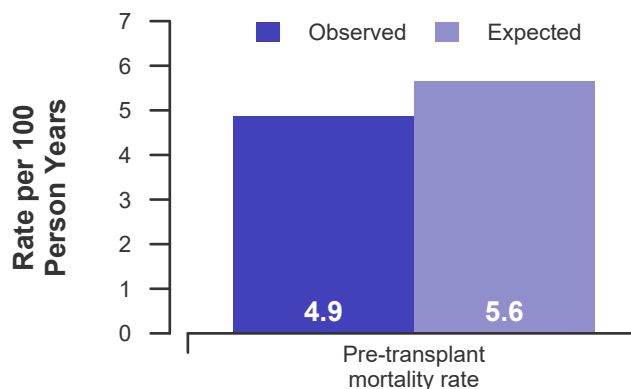


Figure A4. First-year adult graft and patient survival: 07/01/2020 - 12/31/2022

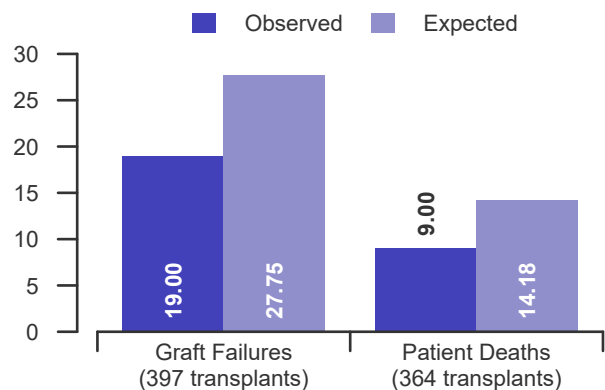


Figure A5. First-year pediatric graft and patient survival: 07/01/2020 - 12/31/2022

This center did not perform any transplants relevant to this figure during 07/01/2020-12/31/2022



B. Waiting List Information

Table B1. Waiting list activity summary: 07/01/2021 - 06/30/2023

Waiting List Registrations	Counts for this center		Activity for 07/01/2022 to 06/30/2023 as percent of registrants on waiting list on 07/01/2022		
	07/01/2021-06/30/2022	07/01/2022-06/30/2023	This Center (%)	OPTN Region (%)	U.S. (%)
On waiting list at start	147	167	100.0	100.0	100.0
Additions					
New listings at this center	211	210	125.7	55.6	47.4
Removals					
Transferred to another center	0	1	0.6	0.4	1.1
Received living donor transplant*	2	4	2.4	5.4	6.3
Received deceased donor transplant*	155	163	97.6	26.6	21.6
Died	9	3	1.8	4.8	4.4
Transplanted at another center	5	8	4.8	6.8	4.7
Deteriorated	17	34	20.4	6.4	4.9
Recovered	0	2	1.2	0.3	0.3
Other reasons	3	5	3.0	8.4	5.1
On waiting list at end of period	167	157	94.0	96.5	98.9

* These patients were removed from waiting list with removal code indicating transplant; this may not equal the number of transplants performed at this center during the specified period.



B. Waiting List Information

Table B2. Demographic characteristics of waiting list candidates

Candidates registered on the waiting list between 07/01/2022 and 06/30/2023

Demographic Characteristic	New Waiting List Registrations 07/01/2022 to 06/30/2023 (%)			All Waiting List Registrations on 06/30/2023 (%)		
	This Center (N=210)	OPTN Region (N=6,335)	U.S. (N=45,281)	This Center (N=157)	OPTN Region (N=10,995)	U.S. (N=94,494)
All (%)	100.0	100.0	100.0	100.0	100.0	100.0
Ethnicity/Race (%)*						
White	33.3	34.3	40.0	22.9	29.4	35.5
African-American	41.9	45.7	30.5	51.6	53.8	31.3
Hispanic/Latino	11.9	14.9	19.8	7.0	12.1	21.5
Asian	4.8	4.1	8.0	4.5	4.0	9.9
Other	8.1	1.0	1.7	14.0	0.8	1.8
Unknown	0.0	0.0	0.0	0.0	0.0	0.0
Age (%)						
<2 years	0.0	0.1	0.2	0.0	0.1	0.1
2-11 years	0.0	0.9	0.9	0.0	0.5	0.6
12-17 years	0.0	1.2	1.4	0.0	0.8	1.1
18-34 years	12.9	9.3	10.1	17.8	9.6	9.6
35-49 years	29.5	24.7	23.8	33.1	27.7	25.8
50-64 years	39.5	41.1	41.1	36.3	42.7	43.8
65-69 years	13.8	14.1	13.6	9.6	11.9	12.5
70+ years	4.3	8.7	9.0	3.2	6.6	6.5
Gender (%)						
Male	62.9	60.0	61.9	55.4	60.2	62.2
Female	37.1	40.0	38.1	44.6	39.8	37.8

* Race and ethnicity are reported together as a single data element, reflecting their data collection (either race or ethnicity is required, but not both). Patients formerly coded as white and Hispanic are coded as Hispanic. Race and ethnicity sum to 100%.



B. Waiting List Information

Table B3. Medical characteristics of waiting list candidates

Candidates registered on the waiting list between 07/01/2022 and 06/30/2023

Medical Characteristic	New Waiting List Registrations 07/01/2022 to 06/30/2023 (%)			All Waiting List Registrations on 06/30/2023 (%)		
	This Center (N=210)	OPTN Region (N=6,335)	U.S. (N=45,281)	This Center (N=157)	OPTN Region (N=10,995)	U.S. (N=94,494)
All (%)	100.0	100.0	100.0	100.0	100.0	100.0
Blood Type (%)						
O	53.3	49.6	49.5	47.8	54.6	54.5
A	27.1	30.5	31.7	24.8	23.7	26.8
B	17.1	16.1	15.0	25.5	19.6	16.2
AB	2.4	3.8	3.8	1.9	2.2	2.5
Unknown	0.0	0.0	0.0	0.0	0.0	0.0
Previous Transplant (%)						
Yes	15.7	11.3	12.4	28.0	13.6	13.4
No	84.3	88.7	87.6	72.0	86.4	86.6
Unknown	0.0	0.0	0.0	0.0	0.0	0.0
Initial CPRA (%)						
0-9%	41.9	44.5	45.1	28.0	61.0	65.8
10-79%	28.6	14.9	15.0	35.7	15.0	14.3
80+%	16.2	9.0	7.5	29.9	9.1	7.0
Unknown	13.3	31.6	32.3	6.4	15.0	13.0
Primary Disease (%)*						
Glomerular Diseases	17.1	17.4	18.2	23.6	18.3	18.0
Tubular and Interstitial Diseases	1.9	2.7	3.6	3.2	2.5	3.7
Polycystic Kidneys	5.7	7.5	6.7	5.7	7.6	6.8
Congenital, Familial, Metabolic	1.9	1.8	2.0	2.5	1.9	1.9
Diabetes	38.1	33.9	35.2	37.6	34.8	37.2
Renovascular & Vascular Diseases	0.0	0.0	0.1	0.0	0.1	0.1
Neoplasms	0.5	0.4	0.5	0.6	0.3	0.4
Hypertensive Nephrosclerosis	22.9	25.6	20.1	21.0	27.2	20.5
Other	11.9	10.6	13.3	5.1	7.0	11.2
Missing*	0.0	0.2	0.3	0.6	0.2	0.3

* When "retransplant" is indicated, the primary disease is passed forward from the prior transplant in order to indicate the initial primary disease causing organ failure. "Missing" may include some patients for whom retransplant is indicated but no prior diagnosis can be found.



B. Waiting List Information

Table B4. Transplant rates: 07/01/2021 - 06/30/2023

Waiting List Registrations	This Center	OPO/DSA	Region	U.S.
All Candidates				
Count on waiting list at start*	147	151	11,995	95,920
Person Years**	325.4	345.9	22,810.2	190,344.1
Removals for Transplant	324	334	7,037	51,007
Adult (18+) Candidates				
Count on waiting list at start*	147	147	11,842	94,262
Person Years**	325.4	325.4	22,508.2	186,898.2
Removals for transplant	324	324	6,833	49,303
Pediatric (<18) Candidates				
Count on waiting list at start*	--	--	--	--
Person Years**	--	--	--	--
Removals for transplant	--	--	--	--

* Counts in this table may be lower than similar counts in other waiting list tables, such as Table B1. A small percentage (~1%) of patients are found to have died or been transplanted before being removed from the waiting list, so these patients are excluded if the event occurs prior to the start of the study period. Inactive time on the waiting list is included in the calculations for this table.

** Person years are calculated as days (converted to fractional years). The number of days from July 1 or from the date of first wait listing until death, transplant, removal from the waiting list or June 30.

Figure B1. Observed and expected transplant rates: 07/01/2021 - 06/30/2023

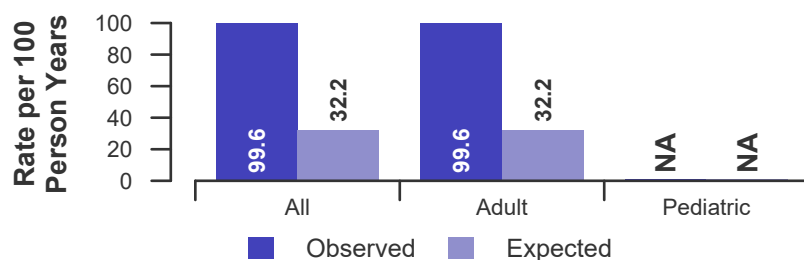


Figure B2. Transplant rate ratio estimate

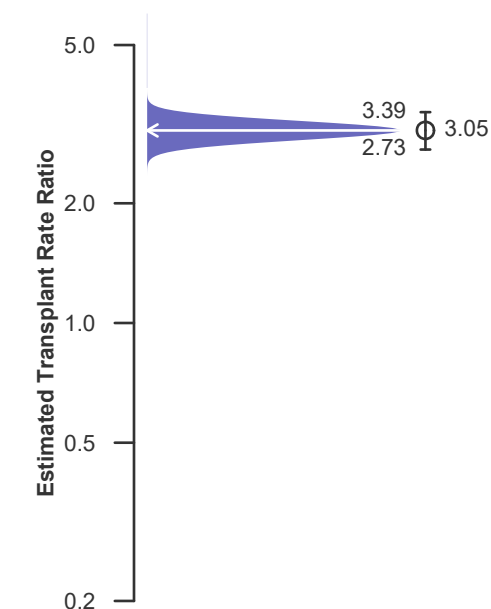
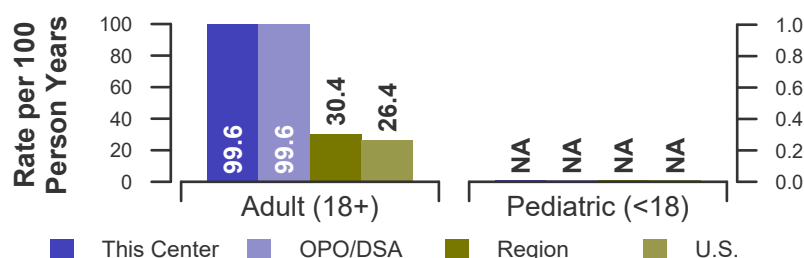


Figure B3. Observed adult (18+) and pediatric (<18) transplant rates: 07/01/2021 - 06/30/2023





B. Waiting List Information

Table B4D. Deceased donor transplant rates: 07/01/2021 - 06/30/2023

Waiting List Registrations	This Center	OPO/DSA	Region	U.S.
All Candidates				
Count on waiting list at start*	147	151	11,995	95,920
Person Years**	325.4	345.9	22,810.2	190,344.1
Removals for Transplant	318	326	5,844	39,192
Adult (18+) Candidates				
Count on waiting list at start*	147	147	11,842	94,262
Person Years**	325.4	325.4	22,508.2	186,898.2
Removals for transplant	318	318	5,690	37,972
Pediatric (<18) Candidates				
Count on waiting list at start*	--	--	--	--
Person Years**	--	--	--	--
Removals for transplant	--	--	--	--

* Counts in this table may be lower than similar counts in other waiting list tables, such as Table B1. A small percentage (~1%) of patients are found to have died or been transplanted before being removed from the waiting list, so these patients are excluded if the event occurs prior to the start of the study period. Inactive time on the waiting list is included in the calculations for this table.

** Person years are calculated as days (converted to fractional years). The number of days from July 1 or from the date of first wait listing until death, transplant, removal from the waiting list or June 30.

Figure B1D. Observed and expected deceased donor transplant rates: 07/01/2021 - 06/30/2023

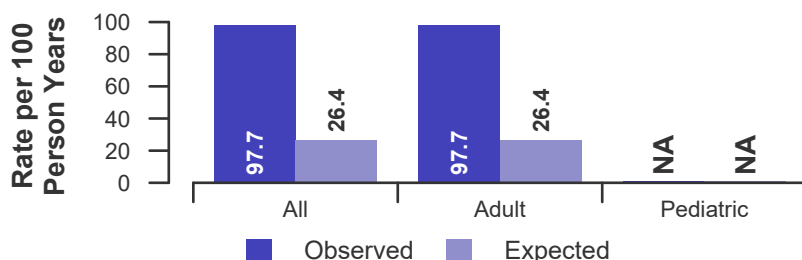


Figure B2D. Deceased donor transplant rate ratio estimate

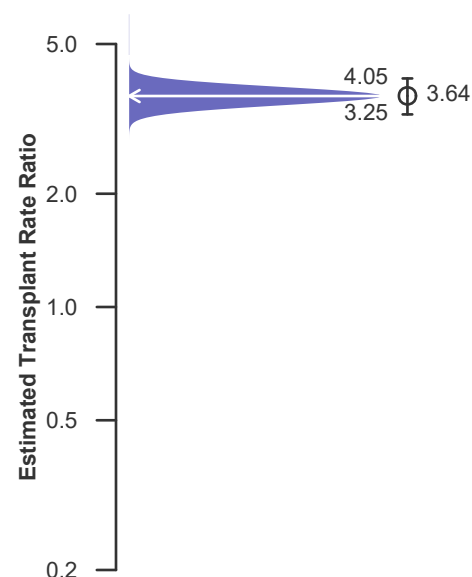
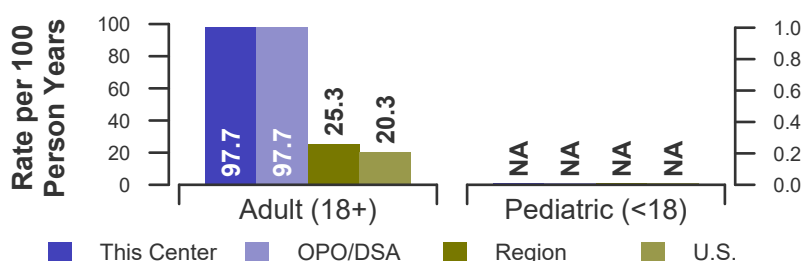


Figure B3D. Observed adult (18+) and pediatric (<18) deceased donor transplant rates: 07/01/2021 - 06/30/2023





B. Waiting List Information

Table B5. Pre-transplant mortality rates: 07/01/2021 - 06/30/2023

Waiting List Registrations	This Center	OPO/DSA	Region	U.S.
All Candidates				
Count on waiting list at start*	147	151	11,995	95,920
Person Years**	369.0	389.5	25,461.3	206,669.1
Number of deaths	18	18	1,704	12,027
Adult (18+) Candidates				
Count on waiting list at start*	147	147	11,842	94,262
Person Years**	369.0	369.0	25,140.8	203,095.3
Number of deaths	18	18	1,700	11,980
Pediatric (<18) Candidates				
Count on waiting list at start*	--	--	--	--
Person Years**	--	--	--	--
Number of deaths	--	--	--	--

* Counts in this table may be lower than similar counts in other waiting list tables, such as Table B1. A small percentage (~1%) of patients are found to have died or been transplanted before being removed from the waiting list, so these patients are excluded if the event occurs prior to the start of the study period. Inactive time on the waiting list is included in the calculations for this table.

** Person years are calculated as days (converted to fractional years). The number of days from July 1 or from the date of first wait listing until death, transplant, 60 days after recovery, transfer or June 30.

Figure B4. Observed and expected pre-transplant mortality rates: 07/01/2021 - 06/30/2023

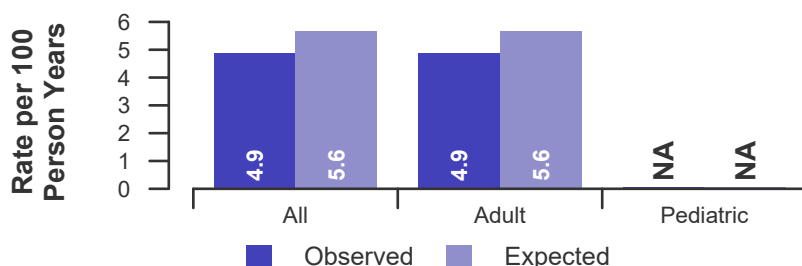


Figure B6. Observed adult (18+) and pediatric (<18) pre-transplant mortality rates: 07/01/2021 - 06/30/2023

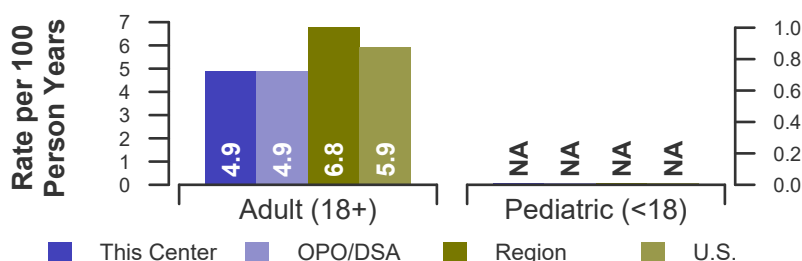
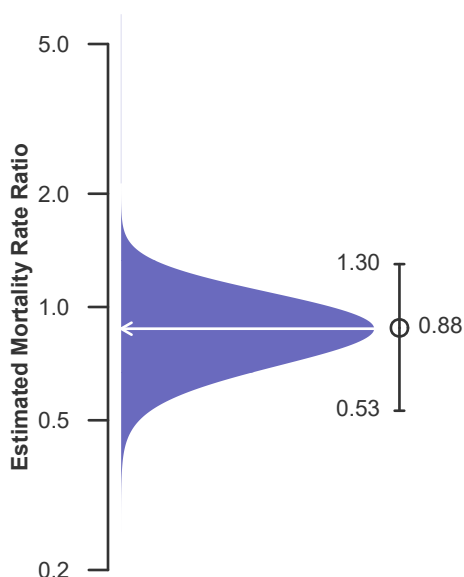


Figure B5. Pre-transplant mortality rate ratio estimate





B. Waiting List Information

Table B6. Rates of patient mortality after listing: 07/01/2021 - 06/30/2023

Waiting List Registrations	This Center	OPO/DSA	Region	U.S.
All Patients				
Count at risk during the evaluation period	1,284	1,426	43,036	314,413
Person-years*	1,958.3	2,131.9	62,877.9	464,808.0
Number of Deaths	69	72	3,564	23,649
Adult (18+) Patients				
Count at risk during the evaluation period	1,284	1,351	41,904	305,285
Person-years*	1,958.3	2,012.3	61,161.1	450,734.0
Number of Deaths	69	72	3,552	23,554
Pediatric (<18) Patients				
Count at risk during the evaluation period	0	75	1,132	9,128
Person-years*	0.0	119.6	1,716.8	14,074.0
Number of Deaths	0	0	12	95

* Person-years are calculated as days (converted to fractional years). The number of days from 07/01/2021, or from the date of first wait listing until death, reaching 7 years after listing or June 30, 2023.

** Patient mortality after listing describes the relative survival experience of patients after listing. It depends on many factors, some of which are outside of the control of the transplant program. For example, availability of organs may not be the same in every part of the country.

Figure B7. Observed and expected rates of patient mortality after listing: 07/01/2021 - 06/30/2023

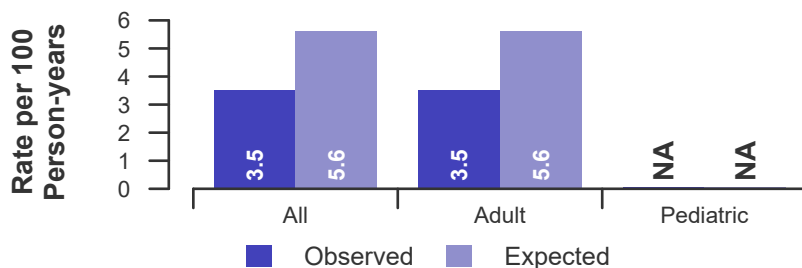


Figure B8. HR estimate of patient mortality after listing

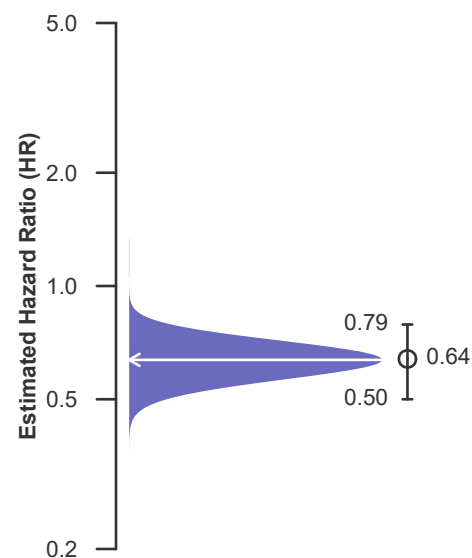
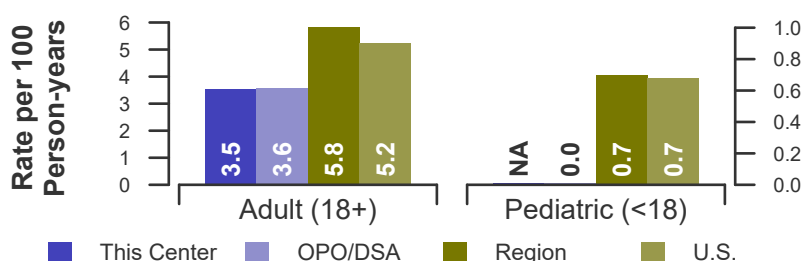


Figure B9. Observed adult (18+) and pediatric (<18) rates of patient mortality after listing: 07/01/2021 - 06/30/2023





B. Waiting List Information

Table B7. Waiting list candidate status after listing
Candidates registered on waiting list between 01/01/2021 and 12/31/2021

Waiting list status (survival status)	This Center (N=195)			U.S. (N=41,483)		
	Months Since Listing			Months Since Listing		
	6	12	18	6	12	18
Alive on waiting list (%)	32.8	19.5	13.3	73.8	60.1	49.7
Died on the waiting list without transplant (%)	0.5	1.0	1.0	1.5	2.6	3.5
Removed without transplant (%):						
Condition worsened (status unknown)	2.1	3.6	5.6	0.7	1.6	2.7
Condition improved (status unknown)	0.0	0.0	0.0	0.1	0.2	0.3
Refused transplant (status unknown)	0.0	0.0	0.0	0.0	0.1	0.1
Other	0.5	0.5	0.5	0.8	1.7	2.9
Transplant (living donor from waiting list only) (%):						
Functioning (alive)	0.0	0.5	1.0	5.3	8.5	7.2
Failed-Retransplanted (alive)	0.0	0.0	0.0	0.0	0.0	0.0
Failed-alive not retransplanted	0.0	0.0	0.0	0.0	0.0	0.0
Died	0.0	0.0	0.0	0.0	0.1	0.1
Status Yet Unknown**	0.0	0.0	0.0	0.1	0.3	3.4
Transplant (deceased donor) (%):						
Functioning (alive)	62.1	70.8	43.6	15.1	19.2	15.7
Failed-Retransplanted (alive)	0.0	0.0	0.0	0.0	0.0	0.0
Failed-alive not retransplanted	0.0	0.0	0.0	0.1	0.1	0.1
Died	1.0	2.1	2.6	0.4	0.8	1.1
Status Yet Unknown*	1.0	2.1	32.3	1.9	4.3	12.5
Lost or Transferred (status unknown) (%)	0.0	0.0	0.0	0.2	0.5	0.8
TOTAL (%)	100.0	100.0	100.0	100.0	100.0	100.0
Total % known died on waiting list or after transplant	1.5	3.1	3.6	1.9	3.4	4.7
Total % known died or removed as unstable	3.6	6.7	9.2	2.5	5.0	7.3
Total % removed for transplant	64.1	75.4	79.5	22.9	33.2	40.1
Total % with known functioning transplant (alive)	62.1	71.3	44.6	20.4	27.7	22.9

* Follow-up form covering specified time period not yet completed, and possibly has not become due.



B. Waiting List Information

Table B8. Percent of candidates with deceased donor transplants: demographic characteristics
Candidates registered on the waiting list between 07/01/2017 and 06/30/2020

Characteristic	Percent transplanted at time periods since listing									
	This Center					United States				
	N	30 day	1 year	2 years	3 years	N	30 day	1 year	2 years	3 years
All	502	15.7	56.2	68.5	72.5	101,966	4.8	20.4	28.3	34.3
Ethnicity/Race*										
White	192	14.1	56.2	67.7	72.9	39,336	4.8	21.4	29.5	35.2
African-American	204	15.7	54.4	67.6	70.1	31,795	4.9	20.6	29.0	35.3
Hispanic/Latino	28	25.0	64.3	78.6	85.7	20,127	5.1	19.8	27.2	33.3
Asian	27	22.2	66.7	74.1	81.5	8,708	3.0	15.3	22.5	28.5
Other	51	13.7	52.9	66.7	68.6	2,000	6.2	24.2	32.1	37.8
Unknown	0	--	--	--	--	0	--	--	--	--
Age										
<2 years	0	--	--	--	--	113	7.1	39.8	61.9	73.5
2-11 years	0	--	--	--	--	795	7.2	49.6	66.7	73.8
12-17 years	0	--	--	--	--	1,432	7.4	46.6	59.9	65.0
18-34 years	49	8.2	51.0	75.5	81.6	9,879	4.9	22.5	32.3	40.4
35-49 years	174	16.1	62.6	72.4	77.6	24,886	4.5	20.0	28.2	34.7
50-64 years	193	15.0	54.4	66.8	69.9	43,195	4.8	18.8	26.1	31.9
65-69 years	55	21.8	47.3	60.0	61.8	13,952	4.5	19.3	26.5	31.9
70+ years	31	19.4	54.8	61.3	64.5	7,714	5.1	21.8	28.9	33.5
Gender										
Male	294	15.3	58.5	71.4	75.5	63,044	5.0	19.7	27.2	33.1
Female	208	16.3	52.9	64.4	68.3	38,922	4.5	21.5	30.2	36.4

* Race and ethnicity are reported together as a single data element, reflecting their data collection (either race or ethnicity is required, but not both). Patients formerly coded as white and Hispanic are coded as Hispanic. Race and ethnicity sum to 100%.



B. Waiting List Information

Table B9. Percent of candidates with deceased donor transplants: medical characteristics
Candidates registered on the waiting list between 07/01/2017 and 06/30/2020

Characteristic	N	Percent transplanted at time periods since listing This Center				N	United States			
		30 day	1 year	2 years	3 years		30 day	1 year	2 years	3 years
All	502	15.7	56.2	68.5	72.5	101,966	4.8	20.4	28.3	34.3
Blood Type										
O	271	10.7	45.8	63.1	68.6	50,773	4.2	17.2	24.0	29.5
A	148	25.7	72.3	77.7	81.1	31,813	6.0	24.7	34.3	41.2
B	70	11.4	58.6	65.7	65.7	15,507	3.3	17.6	25.0	30.8
AB	13	30.8	76.9	92.3	92.3	3,873	8.7	37.9	49.0	55.0
Previous Transplant										
Yes	56	7.1	30.4	42.9	51.8	13,464	3.2	19.2	28.0	34.0
No	446	16.8	59.4	71.7	75.1	88,502	5.0	20.6	28.4	34.4
Peak PRA/CPRA										
0-9%	300	20.3	65.3	76.3	79.7	80,298	5.1	20.0	27.5	33.5
10-79%	137	12.4	51.1	67.2	72.3	13,145	4.0	19.3	27.7	34.0
80+%	65	1.5	24.6	35.4	40.0	8,395	3.2	26.3	37.2	43.3
Unknown	0	--	--	--	--	1	100.0	100.0	100.0	100.0
Primary Disease*										
Glomerular Diseases	102	13.7	61.8	76.5	82.4	18,428	4.0	21.6	31.0	38.3
Tubular & Interstitial Diseases	17	17.6	64.7	76.5	76.5	3,883	6.0	22.7	29.8	35.5
Polycystic Kidneys	27	14.8	48.1	59.3	63.0	6,820	3.9	19.7	29.2	36.8
Congenital, Familial, Metabolic	4	0.0	25.0	50.0	75.0	1,944	5.1	31.3	42.5	49.7
Diabetes	170	14.7	48.2	61.8	66.5	37,915	3.4	15.9	22.4	27.4
Renovascular & Vascular Diseases	0	--	--	--	--	169	4.7	22.5	31.4	38.5
Neoplasms	3	0.0	33.3	33.3	33.3	339	7.7	28.6	38.9	42.2
Hypertensive Nephrosclerosis	112	19.6	62.5	74.1	75.9	20,490	5.3	21.5	29.9	36.7
Other	66	16.7	62.1	69.7	72.7	11,630	9.7	29.2	37.2	42.2
Missing*	1	0.0	0.0	0.0	0.0	348	2.0	9.5	17.5	22.7

* When "retransplant" is indicated, the primary disease is passed forward from the prior transplant in order to indicate the initial primary disease causing organ failure. "Missing" may include some patients for whom retransplant is indicated but no prior diagnosis can be found.



B. Waiting List Information

Table B10. Time to transplant for waiting list candidates*

Candidates registered on the waiting list between 07/01/2017 and 12/31/2022

Percentile	Center	Months to Transplant**		U.S.
		OPO/DSA	Region	
5th	0.2	0.2	0.6	0.7
10th	0.5	0.5	1.5	1.8
25th	1.4	1.4	6.3	7.6
50th (median time to transplant)	5.2	5.2	27.1	31.3
75th	22.6	22.6	Not Observed	Not Observed

* If cells contain "Not Observed" fewer than that percentile of patients had received a transplant. For example, the 50th percentile of time to transplant is the time when 50% of candidates have received transplants. If waiting times are long, then the 50th percentile may not be observed during the follow-up period for this table. Also, if more than 50% of candidates are removed from the list due to death or other reasons before receiving transplants, then the 50th percentile of time to transplant will not be observed.

** Censored on 06/30/2023. Calculated as the months after listing, during which the corresponding percent of all patients initially listed had received a transplant.



B. Waiting List Information

Table B11. Offer Acceptance Practices: 07/01/2022 - 06/30/2023

Offers Acceptance Characteristics	This Center	OPO/DSA	Region	U.S.
Overall				
Number of Offers	4,858	5,011	318,261	3,093,430
Number of Acceptances	156	161	2,833	19,212
Expected Acceptances	108.9	115.0	2,425.4	19,211.3
Offer Acceptance Ratio*	1.42	1.39	1.17	1.00
95% Credible Interval**	[1.21, 1.65]	--	--	--
Low-KDRI Donors (KDRI < 1.05)				
Number of Offers	580	709	44,527	403,899
Number of Acceptances	28	32	805	5,874
Expected Acceptances	30.9	36.5	785.9	5,881.4
Offer Acceptance Ratio*	0.91	0.88	1.02	1.00
95% Credible Interval**	[0.62, 1.27]	--	--	--
Medium-KDRI Donors (1.05 < KDRI < 1.75)				
Number of Offers	3,013	3,037	206,009	1,972,323
Number of Acceptances	86	87	1,585	10,697
Expected Acceptances	66.0	66.3	1,344.6	10,689.1
Offer Acceptance Ratio*	1.29	1.30	1.18	1.00
95% Credible Interval**	[1.04, 1.58]	--	--	--
High-KDRI Donors (KDRI > 1.75)				
Number of Offers	1,265	1,265	67,725	717,197
Number of Acceptances	42	42	443	2,639
Expected Acceptances	12.1	12.1	294.9	2,640.4
Offer Acceptance Ratio*	3.12	3.12	1.50	1.00
95% Credible Interval**	[2.27, 4.11]	--	--	--
Hard-to-Place Kidneys (Over 100 Offers)				
Number of Offers	3,938	3,948	271,770	2,692,000
Number of Acceptances	86	86	478	3,554
Expected Acceptances	30.4	30.4	414.7	3,731.4
Offer Acceptance Ratio*	2.71	2.71	1.15	0.95
95% Credible Interval**	[2.18, 3.31]	--	--	--

* The offer acceptance ratio estimates the relative offer acceptance practice of UAMS Medical Center compared to the national offer acceptance practice. A ratio above one indicates the program accepts more offers compared to national offer acceptance practices (e.g., an offer acceptance ratio of 1.25 indicates a center accepts 25% more offers than is expected based on national offer acceptance practices), while a ratio below one indicates the program accepts fewer offers compared to national offer acceptance practices (e.g., an offer acceptance ratio of 0.75 indicates a center accepts 25% fewer offers than is expected based on national offer acceptance practices).

** As an example, the 95% Credible Interval for the overall offer acceptance ratio, [1.21, 1.65], indicates the location of ARUA's true offer acceptance ratio with 95% probability. The best estimate is 42% more likely to accept an offer compared to national acceptance behavior, but ARUA's performance could plausibly range from 21% higher acceptance up to 65% higher acceptance.



B. Waiting List Information

Figure B10. Offer acceptance: Overall

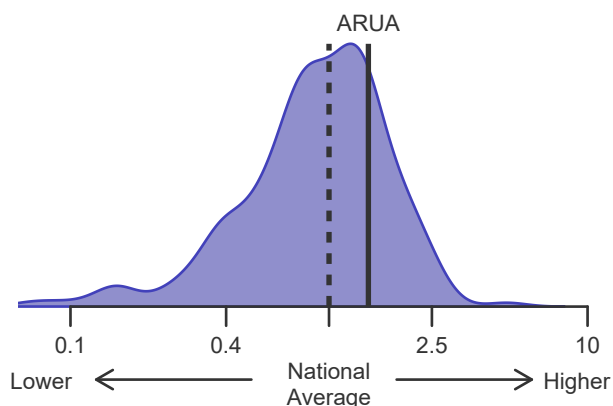


Figure B11. Offer acceptance: Low-KDRI

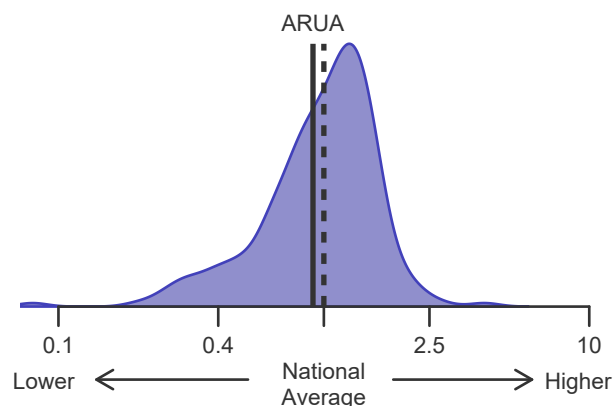


Figure B12. Offer acceptance: Medium-KDRI

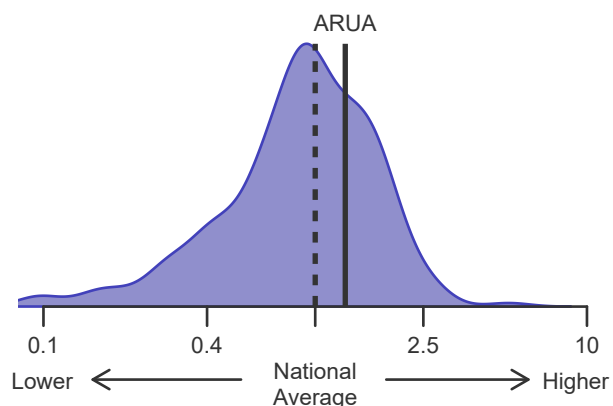


Figure B13. Offer acceptance: High-KDRI

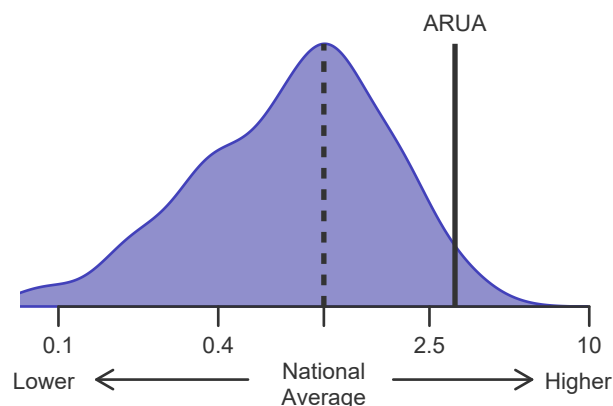
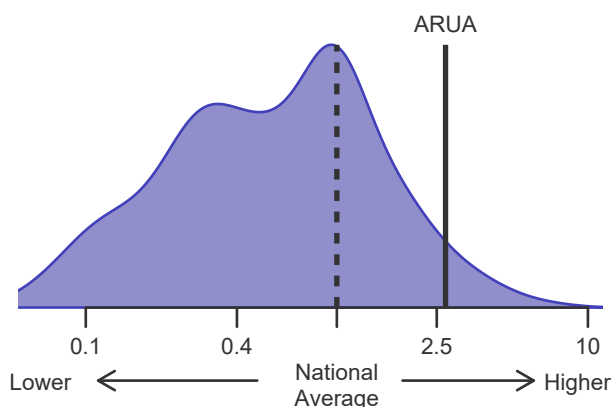


Figure B14. Offer acceptance: Offer number > 100





C. Transplant Information

Table C1D. Deceased donor transplant recipient demographic characteristics

Patients transplanted between 07/01/2022 and 06/30/2023

Characteristic	Percentage in each category		
	Center (N=163)	Region (N=3,025)	U.S. (N=20,676)
Ethnicity/Race (%)*			
White	38.0	29.2	34.6
African-American	38.0	51.0	34.2
Hispanic/Latino	12.9	15.2	20.7
Asian	4.3	3.4	8.7
Other	6.7	1.2	1.8
Unknown	0.0	0.0	0.0
Age (%)			
<2 years	0.0	0.0	0.1
2-11 years	0.0	0.9	1.0
12-17	0.0	1.3	1.4
18-34	7.4	9.7	9.6
35-49 years	30.1	25.0	23.5
50-64 years	45.4	39.7	39.5
65-69 years	11.7	13.5	13.6
70+ years	5.5	9.9	11.3
Gender (%)			
Male	63.2	58.6	60.5
Female	36.8	41.4	39.5

* Race and ethnicity are reported together as a single data element, reflecting their data collection (either race or ethnicity is required, but not both). Patients formerly coded as white and Hispanic are coded as Hispanic. Race and ethnicity sum to 100%.



C. Transplant Information

Table C1L. Living donor transplant recipient demographic characteristics

Patients transplanted between 07/01/2022 and 06/30/2023

Characteristic	Percentage in each category		
	Center (N=4)	Region (N=620)	U.S. (N=6,069)
Ethnicity/Race (%)*			
White	100.0	61.9	61.3
African-American	0.0	18.5	12.3
Hispanic/Latino	0.0	14.2	17.5
Asian	0.0	4.5	7.5
Other	0.0	0.8	1.4
Unknown	0.0	0.0	0.0
Age (%)			
<2 years	0.0	0.0	0.1
2-11 years	0.0	2.4	1.7
12-17	0.0	1.8	1.8
18-34	50.0	14.8	15.2
35-49 years	0.0	26.3	25.9
50-64 years	50.0	37.1	35.3
65-69 years	0.0	8.9	9.9
70+ years	0.0	8.7	10.1
Gender (%)			
Male	100.0	62.9	62.0
Female	0.0	37.1	38.0

* Race and ethnicity are reported together as a single data element, reflecting their data collection (either race or ethnicity is required, but not both). Patients formerly coded as white and Hispanic are coded as Hispanic. Race and ethnicity sum to 100%.



C. Transplant Information

Table C2D. Deceased donor transplant recipient medical characteristics

Patients transplanted between 07/01/2022 and 06/30/2023

Characteristic	Percentage in each category		
	Center (N=163)	Region (N=3,025)	U.S. (N=20,676)
Blood Type (%)			
O	51.5	47.4	46.8
A	30.7	33.7	33.5
B	14.1	14.4	14.9
AB	3.7	4.6	4.8
Previous Transplant (%)			
Yes	6.7	10.7	12.3
No	93.3	89.3	87.7
Peak PRA/CPRA Prior to Transplant (%)			
0-9%	43.6	47.0	51.2
10-79%	31.9	25.3	23.7
80+ %	16.6	20.5	17.9
Unknown	8.0	7.2	7.2
Body Mass Index (%)			
0-20	7.4	9.1	8.9
21-25	28.8	26.8	27.3
26-30	35.6	32.1	31.0
31-35	19.0	22.4	21.4
36-40	8.6	8.5	8.5
41+	0.6	0.9	1.4
Unknown	0.0	0.3	1.6
Primary Disease (%)*			
Glomerular Diseases	19.0	18.6	20.3
Tubular and Interstitial Disease	3.1	3.0	3.8
Polycystic Kidneys	8.6	7.1	6.8
Congenital, Familial, Metabolic	1.2	2.0	2.4
Diabetes	33.7	30.2	30.8
Renovascular & Vascular Diseases	0.0	0.1	0.1
Neoplasms	0.0	0.4	0.5
Hypertensive Nephrosclerosis	27.6	29.7	23.3
Other Kidney	6.7	8.5	11.8
Missing*	0.0	0.2	0.3

* When "retransplant" is indicated, the primary disease is passed forward from the prior transplant in order to indicate the initial primary disease causing organ failure. "Missing" may include some patients for whom retransplant is indicated but no prior diagnosis can be found.



C. Transplant Information

Table C2L. Living donor transplant recipient medical characteristics

Patients transplanted between 07/01/2022 and 06/30/2023

Characteristic	Percentage in each category		
	Center (N=4)	Region (N=620)	U.S. (N=6,069)
Blood Type (%)			
O	100.0	46.3	43.0
A	0.0	34.4	38.3
B	0.0	14.7	13.8
AB	0.0	4.7	4.9
Previous Transplant (%)			
Yes	25.0	10.8	11.2
No	75.0	89.2	88.8
Peak PRA/CPRA Prior to Transplant (%)			
0-9%	25.0	58.2	66.0
10-79%	50.0	27.3	22.9
80+ %	0.0	6.6	4.6
Unknown	25.0	7.9	6.4
Body Mass Index (%)			
0-20	0.0	11.1	12.5
21-25	0.0	29.7	29.6
26-30	75.0	31.6	29.3
31-35	0.0	19.2	19.8
36-40	25.0	7.4	7.3
41+	0.0	0.8	1.1
Unknown	0.0	0.2	0.3
Primary Disease (%)*			
Glomerular Diseases	50.0	27.6	29.2
Tubular and Interstitial Disease	25.0	2.9	4.6
Polycystic Kidneys	0.0	10.8	11.5
Congenital, Familial, Metabolic	0.0	3.2	3.3
Diabetes	0.0	23.1	24.7
Renovascular & Vascular Diseases	0.0	0.0	0.1
Neoplasms	0.0	1.1	0.7
Hypertensive Nephrosclerosis	0.0	22.4	15.0
Other Kidney	25.0	8.2	10.4
Missing*	0.0	0.6	0.4

* When "retransplant" is indicated, the primary disease is passed forward from the prior transplant in order to indicate the initial primary disease causing organ failure. "Missing" may include some patients for whom retransplant is indicated but no prior diagnosis can be found.



C. Transplant Information

Table C3D. Deceased donor characteristics**Transplants performed between 07/01/2022 and 06/30/2023**

Donor Characteristic	Percentage in each category		
	Center (N=163)	Region (N=3,025)	U.S. (N=20,676)
Cause of Death (%)			
Deceased: Stroke	23.3	21.7	20.6
Deceased: MVA	8.0	14.9	12.7
Deceased: Other	68.7	63.3	66.7
Ethnicity/Race (%)*			
White	52.1	55.1	54.4
African-American	23.3	18.3	14.6
Hispanic/Latino	10.4	9.5	12.1
Asian	2.5	1.5	2.8
Other	1.2	0.6	1.3
Not Reported	10.4	14.9	14.8
Age (%)			
<2 years	0.0	0.4	0.6
2-11 years	0.6	2.0	2.1
12-17	3.7	3.2	3.5
18-34	23.9	30.4	30.6
35-49 years	37.4	32.5	34.9
50-64 years	31.9	28.2	25.6
65-69 years	2.5	2.7	2.2
70+ years	0.0	0.7	0.5
Gender (%)			
Male	63.2	64.2	64.2
Female	36.8	35.8	35.8
Blood Type (%)			
O	54.0	48.7	48.5
A	31.9	36.3	36.2
B	13.5	11.9	11.7
AB	0.6	3.1	3.5
Unknown	0.0	0.0	0.0

* Race and ethnicity are reported together as a single data element, reflecting their data collection (either race or ethnicity is required, but not both). Patients formerly coded as white and Hispanic are coded as Hispanic. Race and ethnicity sum to 100%.



C. Transplant Information

Table C3L. Living donor characteristics

Transplants performed between 07/01/2022 and 06/30/2023

Donor Characteristic	Percentage in each category		
	Center (N=4)	Region (N=620)	U.S. (N=6,069)
Ethnicity/Race (%)*			
White	100.0	64.8	65.2
African-American	0.0	12.7	7.1
Hispanic/Latino	0.0	3.5	6.2
Asian	0.0	3.4	5.2
Other	0.0	0.3	1.8
Not Reported	0.0	15.2	14.5
Age (%)			
0-11 years	0.0	0.0	0.0
12-17	0.0	0.0	0.0
18-34	50.0	26.9	24.1
35-49 years	25.0	36.1	38.3
50-64 years	25.0	30.6	31.5
65-69 years	0.0	4.8	4.5
70+ years	0.0	1.5	1.5
Gender (%)			
Male	50.0	41.0	36.8
Female	50.0	59.0	63.2
Blood Type (%)			
O	100.0	68.4	60.2
A	0.0	22.9	29.1
B	0.0	7.1	8.7
AB	0.0	1.6	2.0
Unknown	0.0	0.0	0.0

* Race and ethnicity are reported together as a single data element, reflecting their data collection (either race or ethnicity is required, but not both). Patients formerly coded as white and Hispanic are coded as Hispanic. Race and ethnicity sum to 100%.



C. Transplant Information

Table C4D. Deceased donor transplant characteristics
Transplants performed between 07/01/2022 and 06/30/2023

Transplant Characteristic	Percentage in each category		
	Center (N=163)	Region (N=3,025)	U.S. (N=20,676)
Cold Ischemic Time (Hours): Local (%)			
Deceased: 0-11 hr	5.7	18.5	20.0
Deceased: 12-21 hr	60.4	53.0	52.2
Deceased: 22-31 hr	34.0	24.6	23.8
Deceased: 32-41 hr	0.0	3.3	2.8
Deceased: 42+ hr	0.0	0.3	0.6
Not Reported	0.0	0.3	0.7
Cold Ischemic Time (Hours): Shared (%)			
Deceased: 0-11 hr	5.5	7.7	8.2
Deceased: 12-21 hr	20.9	46.9	48.8
Deceased: 22-31 hr	44.5	31.0	33.5
Deceased: 32-41 hr	26.4	11.6	7.3
Deceased: 42+ hr	2.7	2.3	1.2
Not Reported	0.0	0.4	1.0
Level of Mismatch (%)			
A Locus Mismatches (%)			
0	11.7	9.9	12.1
1	36.8	38.7	39.2
2	51.5	51.4	48.5
Not Reported	0.0	0.0	0.2
B Locus Mismatches (%)			
0	6.1	5.7	6.9
1	20.9	24.2	25.0
2	73.0	70.1	67.9
Not Reported	0.0	0.0	0.2
DR Locus Mismatches (%)			
0	17.8	14.1	16.3
1	39.3	47.7	47.4
2	42.9	38.1	36.2
Not Reported	0.0	0.0	0.2
Total Mismatches (%)			
0	4.9	3.2	4.6
1	1.8	1.0	1.2
2	0.6	3.8	4.6
3	13.5	14.2	14.3
4	24.5	26.8	27.7
5	37.4	34.0	32.5
6	17.2	16.9	15.1
Not Reported	0.0	0.0	0.2
Procedure Type (%)			
Single organ	96.9	94.6	94.0
Multi organ	3.1	5.4	6.0
Dialysis in First Week After Transplant (%)			
Yes	42.3	32.4	33.6
No	57.7	67.6	66.0
Not Reported	0.0	0.0	0.4
Donor Location (%)			
Local Donation Service Area (DSA)	32.5	38.1	39.2
Another Donation Service Area (DSA)	67.5	61.9	60.8
Median Time in Hospital After Transplant	4.0 Days	5.0 Days	5.0 Days



C. Transplant Information

Table C4L. Living donor transplant characteristics
Transplants performed between 07/01/2022 and 06/30/2023

Transplant Characteristic	Percentage in each category		
	Center (N=4)	Region (N=620)	U.S. (N=6,069)
Relation with Donor (%)			
Related	25.0	40.5	37.0
Unrelated	75.0	59.4	62.2
Not Reported	0.0	0.2	0.8
Level of Mismatch (%)			
A Locus Mismatches (%)			
0	25.0	15.8	16.2
1	50.0	50.0	47.7
2	25.0	33.2	32.2
Not Reported	0.0	1.0	3.9
B Locus Mismatches (%)			
0	25.0	9.4	9.5
1	0.0	43.4	40.1
2	75.0	46.3	46.5
Not Reported	0.0	1.0	3.9
DR Locus Mismatches (%)			
0	25.0	15.0	15.2
1	50.0	49.7	47.2
2	25.0	34.4	33.8
Not Reported	0.0	1.0	3.9
Total Mismatches (%)			
0	25.0	4.5	4.8
1	0.0	3.4	3.4
2	0.0	12.6	11.8
3	0.0	24.0	21.3
4	25.0	16.6	17.6
5	50.0	23.7	24.4
6	0.0	14.2	12.8
Not Reported	0.0	1.0	3.9
Procedure Type (%)			
Single organ	100.0	100.0	100.0
Multi organ	0.0	0.0	0.0
Dialysis in First Week After Transplant (%)			
Yes	25.0	3.2	2.6
No	75.0	96.8	97.2
Not Reported	0.0	0.0	0.2
Median Time in Hospital After Transplant	3.0 Days	4.0 Days	4.0 Days



C. Transplant Information

Table C5. Adult (18+) 1-month survival with a functioning graft
Single organ transplants performed between 07/01/2020 and 12/31/2022
Deaths and retransplants are considered graft failures

	ARUA	U.S.
Number of transplants evaluated	397	57,238
Estimated probability of surviving with a functioning graft at 1 month & [95% CI] (unadjusted for patient and donor characteristics)	98.99% [98.01%-99.98%]	98.46% [98.36%-98.56%]
Expected probability of surviving with a functioning graft at 1 month (adjusted for patient and donor characteristics)	98.14%	--
Number of observed graft failures (including deaths) during the first month after transplant	4	883
Number of expected graft failures (including deaths) during the first month after transplant	7.47	--
Estimated hazard ratio*	0.63	--
95% credible interval for the hazard ratio**	[0.23, 1.23]	--

* The hazard ratio provides an estimate of how UAMS Medical Center's results compare with what was expected based on modeling the transplant outcomes from all U.S. programs. A ratio above 1 indicates higher than expected graft failure rates (e.g., a hazard ratio of 1.5 would indicate 50% higher risk), and a ratio below 1 indicates lower than expected graft failure rates (e.g., a hazard ratio of 0.75 would indicate 25% lower risk). If ARUA's graft failure rate were precisely the expected rate, the estimated hazard ratio would be 1.0.

** The 95% credible interval, [0.23, 1.23], indicates the location of ARUA's true hazard ratio with 95% probability. The best estimate is 37% lower risk of graft failure compared to an average program, but ARUA's performance could plausibly range from 77% reduced risk up to 23% increased risk.

Figure C1. Adult (18+) 1-month graft failure HR estimate

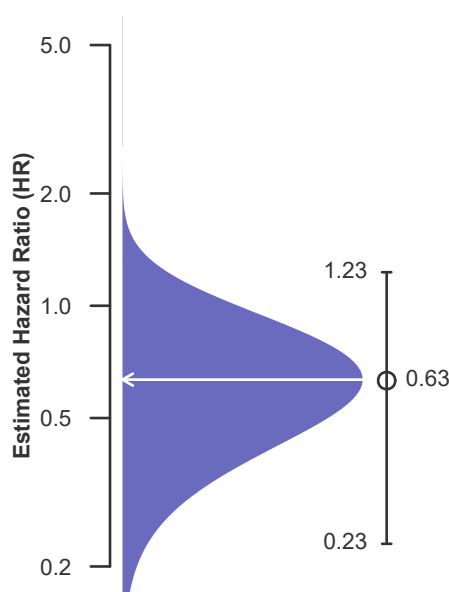
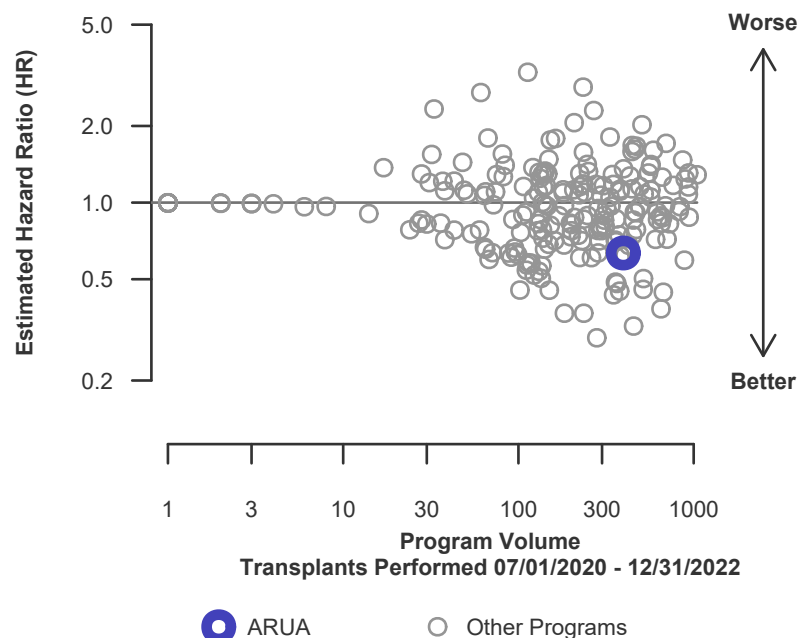


Figure C2. Adult (18+) 1-month graft failure HR program comparison





C. Transplant Information

Table C5D. Adult (18+) 1-month survival with a functioning deceased donor graft

Single organ transplants performed between 07/01/2020 and 12/31/2022

Deaths and retransplants are considered graft failures

	ARUA	U.S.
Number of transplants evaluated	391	43,108
Estimated probability of surviving with a functioning graft at 1 month & [95% CI] (unadjusted for patient and donor characteristics)	98.98% [97.98%-99.98%]	98.21% [98.09%-98.34%]
Expected probability of surviving with a functioning graft at 1 month (adjusted for patient and donor characteristics)	98.12%	--
Number of observed graft failures (including deaths) during the first month after transplant	4	771
Number of expected graft failures (including deaths) during the first month after transplant	7.42	--
Estimated hazard ratio*	0.64	--
95% credible interval for the hazard ratio**	[0.23, 1.24]	--

* The hazard ratio provides an estimate of how UAMS Medical Center's results compare with what was expected based on modeling the transplant outcomes from all U.S. programs. A ratio above 1 indicates higher than expected graft failure rates (e.g., a hazard ratio of 1.5 would indicate 50% higher risk), and a ratio below 1 indicates lower than expected graft failure rates (e.g., a hazard ratio of 0.75 would indicate 25% lower risk). If ARUA's graft failure rate were precisely the expected rate, the estimated hazard ratio would be 1.0.

** The 95% credible interval, [0.23, 1.24], indicates the location of ARUA's true hazard ratio with 95% probability. The best estimate is 36% lower risk of graft failure compared to an average program, but ARUA's performance could plausibly range from 77% reduced risk up to 24% increased risk.

Figure C1D. Adult (18+) 1-month deceased donor graft failure HR estimate

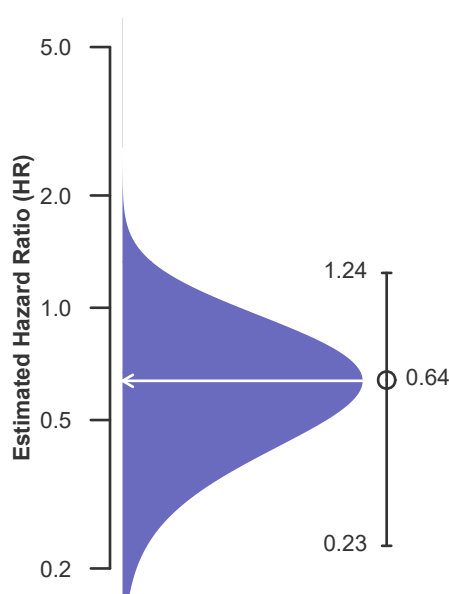
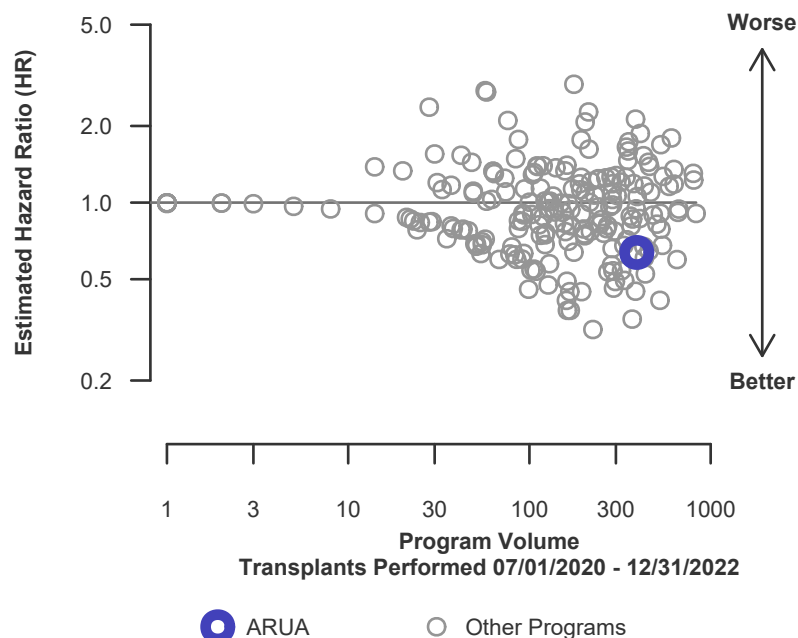


Figure C2D. Adult (18+) 1-month deceased donor graft failure HR program comparison





C. Transplant Information

Table C5L. Adult (18+) 1-month survival with a functioning living donor graft

Single organ transplants performed between 07/01/2020 and 12/31/2022

Deaths and retransplants are considered graft failures

	ARUA	U.S.
Number of transplants evaluated	6	14,130
Estimated probability of surviving with a functioning graft at 1 month & [95% CI] (unadjusted for patient and donor characteristics)	100.00% [100.00%-100.00%]	99.21% [99.06%-99.35%]
Expected probability of surviving with a functioning graft at 1 month (adjusted for patient and donor characteristics)	99.23%	--
Number of observed graft failures (including deaths) during the first month after transplant	0	112
Number of expected graft failures (including deaths) during the first month after transplant	0.05	--
Estimated hazard ratio*	0.98	--
95% credible interval for the hazard ratio**	[0.12, 2.72]	--

* The hazard ratio provides an estimate of how UAMS Medical Center's results compare with what was expected based on modeling the transplant outcomes from all U.S. programs. A ratio above 1 indicates higher than expected graft failure rates (e.g., a hazard ratio of 1.5 would indicate 50% higher risk), and a ratio below 1 indicates lower than expected graft failure rates (e.g., a hazard ratio of 0.75 would indicate 25% lower risk). If ARUA's graft failure rate were precisely the expected rate, the estimated hazard ratio would be 1.0.

** The 95% credible interval, [0.12, 2.72], indicates the location of ARUA's true hazard ratio with 95% probability. The best estimate is 2% lower risk of graft failure compared to an average program, but ARUA's performance could plausibly range from 88% reduced risk up to 172% increased risk.

Figure C1L. Adult (18+) 1-month living donor graft failure HR estimate

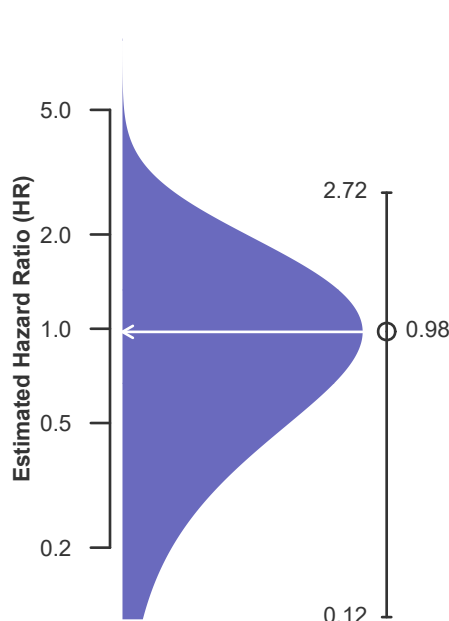
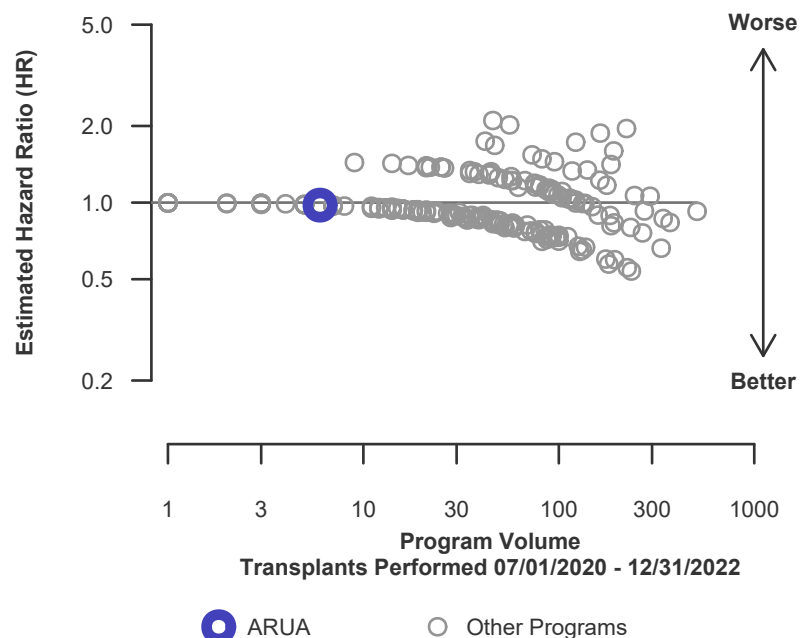


Figure C2L. Adult (18+) 1-month living donor graft failure HR program comparison





C. Transplant Information

Table C6. Adult (18+) 90-Day survival with a functioning graft
Single organ transplants performed between 07/01/2020 and 12/31/2022
Deaths and retransplants are considered graft failures

	ARUA	U.S.
Number of transplants evaluated	397	57,238
Estimated probability of surviving with a functioning graft at 90 days & [95% CI] (unadjusted for patient and donor characteristics)	97.98% [96.61%-99.38%]	97.19% [97.05%-97.32%]
Expected probability of surviving with a functioning graft at 90 days (adjusted for patient and donor characteristics)	96.51%	--
Number of observed graft failures (including deaths) during the first 90 days after transplant	8	1,609
Number of expected graft failures (including deaths) during the first 90 days after transplant	14.01	--
Estimated hazard ratio*	0.62	--
95% credible interval for the hazard ratio**	[0.30, 1.07]	--

* The hazard ratio provides an estimate of how UAMS Medical Center's results compare with what was expected based on modeling the transplant outcomes from all U.S. programs. A ratio above 1 indicates higher than expected graft failure rates (e.g., a hazard ratio of 1.5 would indicate 50% higher risk), and a ratio below 1 indicates lower than expected graft failure rates (e.g., a hazard ratio of 0.75 would indicate 25% lower risk). If ARUA's graft failure rate were precisely the expected rate, the estimated hazard ratio would be 1.0.

** The 95% credible interval, [0.30, 1.07], indicates the location of ARUA's true hazard ratio with 95% probability. The best estimate is 38% lower risk of graft failure compared to an average program, but ARUA's performance could plausibly range from 70% reduced risk up to 7% increased risk.

Figure C3. Adult (18+) 90-Day graft failure HR estimate

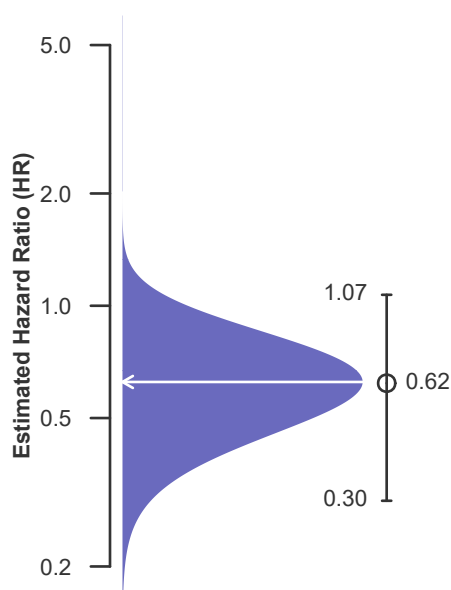
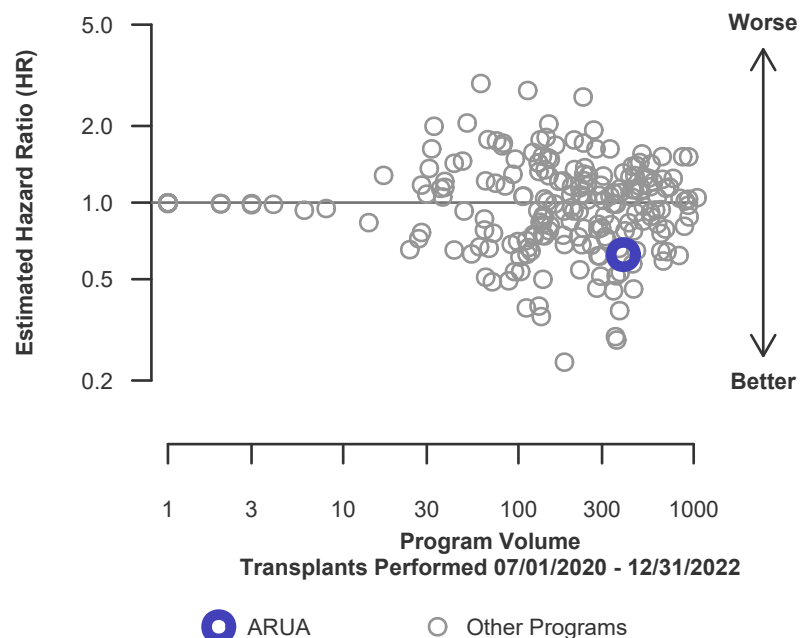


Figure C4. Adult (18+) 90-Day graft failure HR program comparison





C. Transplant Information

Table C6D. Adult (18+) 90-Day survival with a functioning deceased donor graft

Single organ transplants performed between 07/01/2020 and 12/31/2022

Deaths and retransplants are considered graft failures

	ARUA	U.S.
Number of transplants evaluated	391	43,108
Estimated probability of surviving with a functioning graft at 90 days & [95% CI] (unadjusted for patient and donor characteristics)	97.95% [96.56%-99.37%]	96.64% [96.47%-96.81%]
Expected probability of surviving with a functioning graft at 90 days (adjusted for patient and donor characteristics)	96.48%	--
Number of observed graft failures (including deaths) during the first 90 days after transplant	8	1,448
Number of expected graft failures (including deaths) during the first 90 days after transplant	13.94	--
Estimated hazard ratio*	0.63	--
95% credible interval for the hazard ratio**	[0.30, 1.07]	--

* The hazard ratio provides an estimate of how UAMS Medical Center's results compare with what was expected based on modeling the transplant outcomes from all U.S. programs. A ratio above 1 indicates higher than expected graft failure rates (e.g., a hazard ratio of 1.5 would indicate 50% higher risk), and a ratio below 1 indicates lower than expected graft failure rates (e.g., a hazard ratio of 0.75 would indicate 25% lower risk). If ARUA's graft failure rate were precisely the expected rate, the estimated hazard ratio would be 1.0.

** The 95% credible interval, [0.30, 1.07], indicates the location of ARUA's true hazard ratio with 95% probability. The best estimate is 37% lower risk of graft failure compared to an average program, but ARUA's performance could plausibly range from 70% reduced risk up to 7% increased risk.

Figure C3D. Adult (18+) 90-Day deceased donor graft failure HR estimate

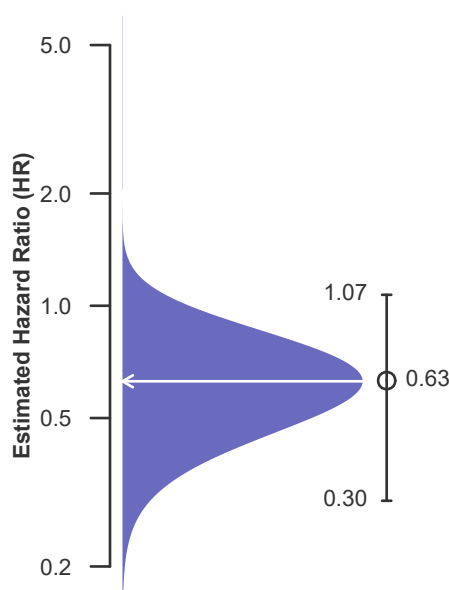
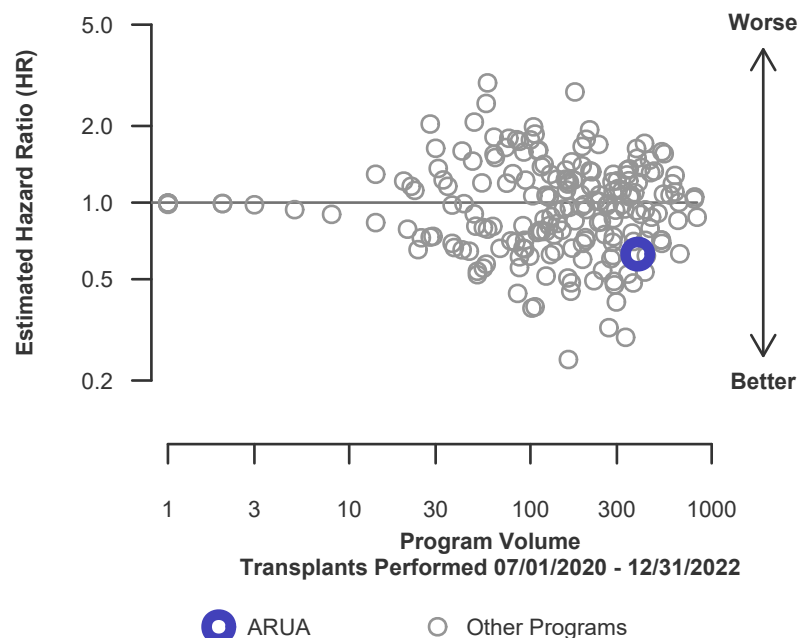


Figure C4D. Adult (18+) 90-Day deceased donor graft failure HR program comparison





C. Transplant Information

Table C6L. Adult (18+) 90-Day survival with a functioning living donor graft

Single organ transplants performed between 07/01/2020 and 12/31/2022

Deaths and retransplants are considered graft failures

	ARUA	U.S.
Number of transplants evaluated	6	14,130
Estimated probability of surviving with a functioning graft at 90 days & [95% CI] (unadjusted for patient and donor characteristics)	100.00% [100.00%-100.00%]	98.86% [98.69%-99.04%]
Expected probability of surviving with a functioning graft at 90 days (adjusted for patient and donor characteristics)	98.89%	--
Number of observed graft failures (including deaths) during the first 90 days after transplant	0	161
Number of expected graft failures (including deaths) during the first 90 days after transplant	0.07	--
Estimated hazard ratio*	0.97	--
95% credible interval for the hazard ratio**	[0.12, 2.70]	--

* The hazard ratio provides an estimate of how UAMS Medical Center's results compare with what was expected based on modeling the transplant outcomes from all U.S. programs. A ratio above 1 indicates higher than expected graft failure rates (e.g., a hazard ratio of 1.5 would indicate 50% higher risk), and a ratio below 1 indicates lower than expected graft failure rates (e.g., a hazard ratio of 0.75 would indicate 25% lower risk). If ARUA's graft failure rate were precisely the expected rate, the estimated hazard ratio would be 1.0.

** The 95% credible interval, [0.12, 2.70], indicates the location of ARUA's true hazard ratio with 95% probability. The best estimate is 3% lower risk of graft failure compared to an average program, but ARUA's performance could plausibly range from 88% reduced risk up to 170% increased risk.

Figure C3L. Adult (18+) 90-Day living donor graft failure HR estimate

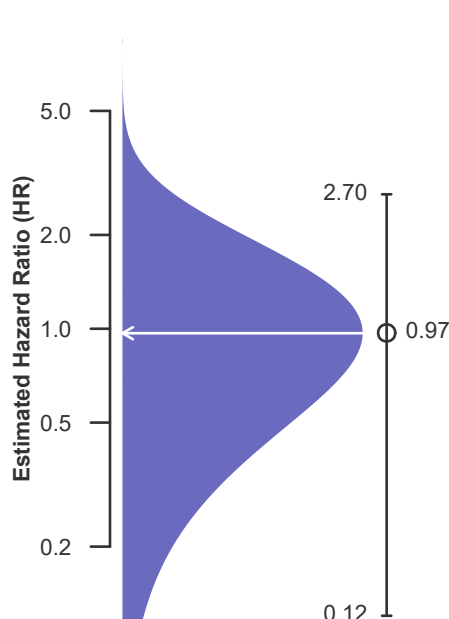
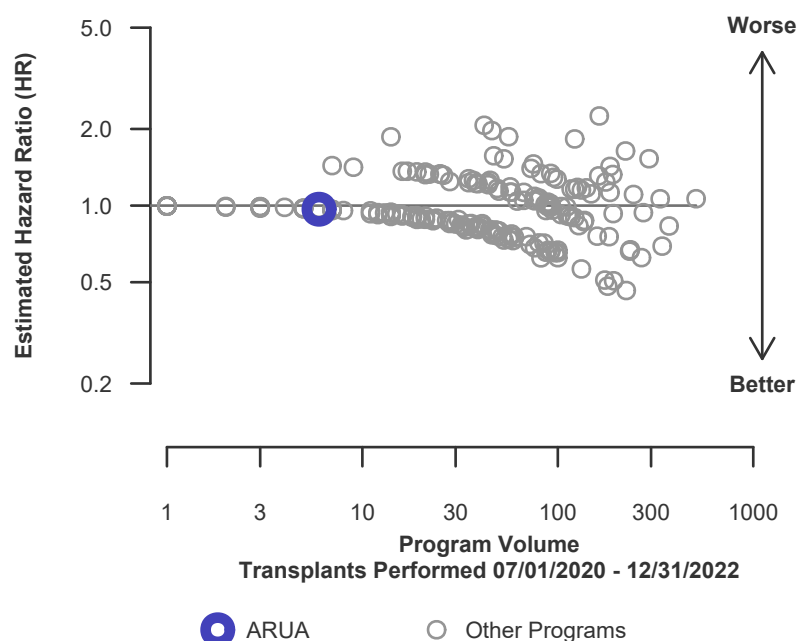


Figure C4L. Adult (18+) 90-Day living donor graft failure HR program comparison





C. Transplant Information

Table C7. Adult (18+) 1-year survival with a functioning graft

Single organ transplants performed between 07/01/2020 and 12/31/2022

Deaths and retransplants are considered graft failures

	ARUA	U.S.
Number of transplants evaluated	397	57,238
Estimated probability of surviving with a functioning graft at 1 year & [95% CI] (unadjusted for patient and donor characteristics)	94.90% [92.68%-97.18%]	94.09% [93.89%-94.30%]
Expected probability of surviving with a functioning graft at 1 year (adjusted for patient and donor characteristics)	92.65%	--
Number of observed graft failures (including deaths) during the first year after transplant	19	3,146
Number of expected graft failures (including deaths) during the first year after transplant	27.75	--
Estimated hazard ratio*	0.71	--
95% credible interval for the hazard ratio**	[0.44, 1.04]	--

* The hazard ratio provides an estimate of how UAMS Medical Center's results compare with what was expected based on modeling the transplant outcomes from all U.S. programs. A ratio above 1 indicates higher than expected graft failure rates (e.g., a hazard ratio of 1.5 would indicate 50% higher risk), and a ratio below 1 indicates lower than expected graft failure rates (e.g., a hazard ratio of 0.75 would indicate 25% lower risk). If ARUA's graft failure rate were precisely the expected rate, the estimated hazard ratio would be 1.0.

** The 95% credible interval, [0.44, 1.04], indicates the location of ARUA's true hazard ratio with 95% probability. The best estimate is 29% lower risk of graft failure compared to an average program, but ARUA's performance could plausibly range from 56% reduced risk up to 4% increased risk.

Figure C5. Adult (18+) 1-year graft failure HR estimate

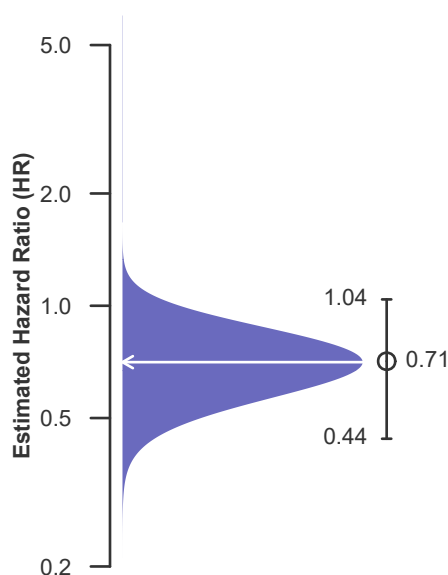
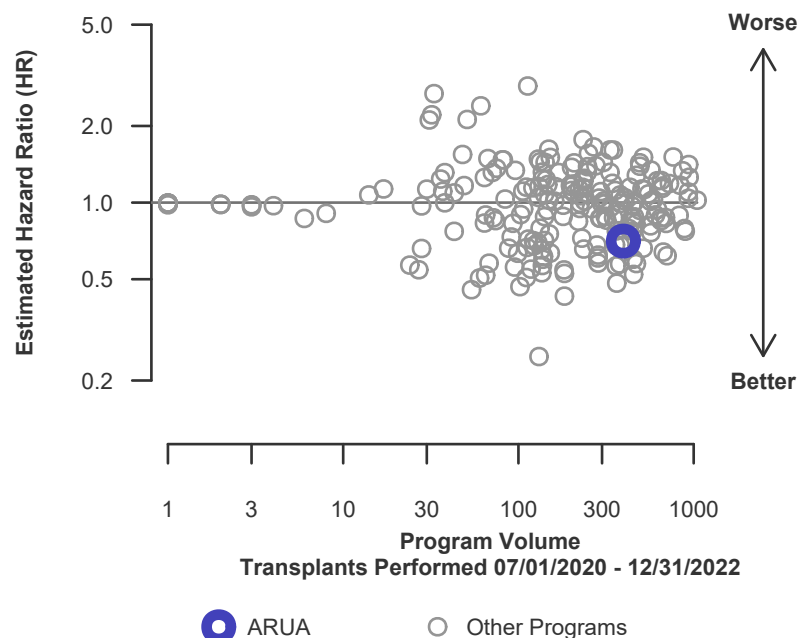


Figure C6. Adult (18+) 1-year graft failure HR program comparison





C. Transplant Information

Table C7D. Adult (18+) 1-year survival with a functioning deceased donor graft

Single organ transplants performed between 07/01/2020 and 12/31/2022

Deaths and retransplants are considered graft failures

	ARUA	U.S.
Number of transplants evaluated	391	43,108
Estimated probability of surviving with a functioning graft at 1 year & [95% CI] (unadjusted for patient and donor characteristics)	94.83% [92.58%-97.14%]	92.92% [92.67%-93.17%]
Expected probability of surviving with a functioning graft at 1 year (adjusted for patient and donor characteristics)	92.57%	--
Number of observed graft failures (including deaths) during the first year after transplant	19	2,836
Number of expected graft failures (including deaths) during the first year after transplant	27.63	--
Estimated hazard ratio*	0.71	--
95% credible interval for the hazard ratio**	[0.44, 1.04]	--

* The hazard ratio provides an estimate of how UAMS Medical Center's results compare with what was expected based on modeling the transplant outcomes from all U.S. programs. A ratio above 1 indicates higher than expected graft failure rates (e.g., a hazard ratio of 1.5 would indicate 50% higher risk), and a ratio below 1 indicates lower than expected graft failure rates (e.g., a hazard ratio of 0.75 would indicate 25% lower risk). If ARUA's graft failure rate were precisely the expected rate, the estimated hazard ratio would be 1.0.

** The 95% credible interval, [0.44, 1.04], indicates the location of ARUA's true hazard ratio with 95% probability. The best estimate is 29% lower risk of graft failure compared to an average program, but ARUA's performance could plausibly range from 56% reduced risk up to 4% increased risk.

Figure C5D. Adult (18+) 1-year deceased donor graft failure HR estimate

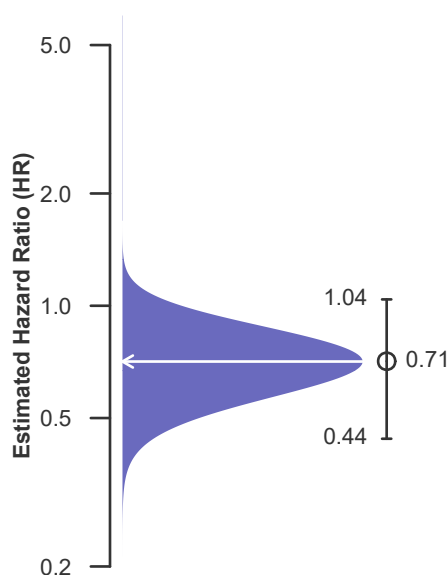
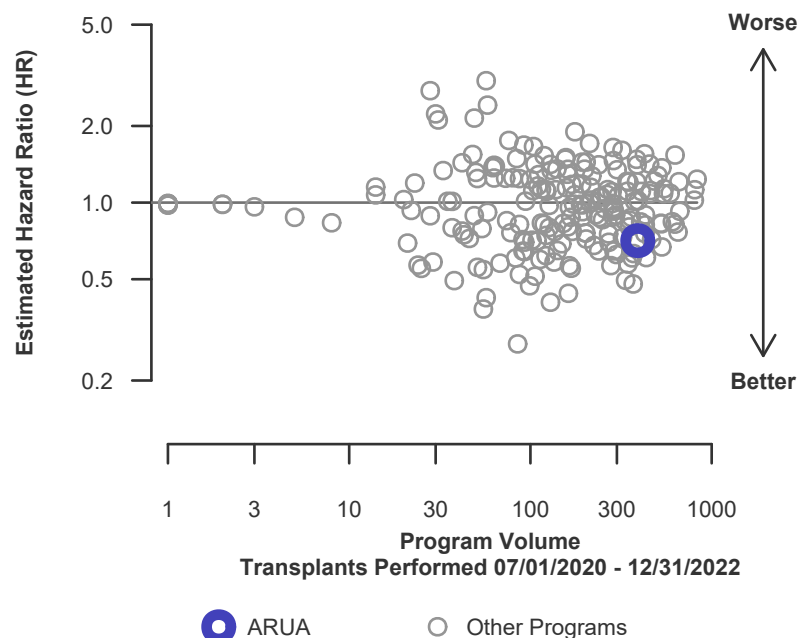


Figure C6D. Adult (18+) 1-year deceased donor graft failure HR program comparison





C. Transplant Information

Table C7L. Adult (18+) 1-year survival with a functioning living donor graft

Single organ transplants performed between 07/01/2020 and 12/31/2022

Deaths and retransplants are considered graft failures

	ARUA	U.S.
Number of transplants evaluated	6	14,130
Estimated probability of surviving with a functioning graft at 1 year & [95% CI] (unadjusted for patient and donor characteristics)	100.00% [100.00%-100.00%]	97.65% [97.39%-97.91%]
Expected probability of surviving with a functioning graft at 1 year (adjusted for patient and donor characteristics)	97.71%	--
Number of observed graft failures (including deaths) during the first year after transplant	0	310
Number of expected graft failures (including deaths) during the first year after transplant	0.11	--
Estimated hazard ratio*	0.95	--
95% credible interval for the hazard ratio**	[0.11, 2.64]	--

* The hazard ratio provides an estimate of how UAMS Medical Center's results compare with what was expected based on modeling the transplant outcomes from all U.S. programs. A ratio above 1 indicates higher than expected graft failure rates (e.g., a hazard ratio of 1.5 would indicate 50% higher risk), and a ratio below 1 indicates lower than expected graft failure rates (e.g., a hazard ratio of 0.75 would indicate 25% lower risk). If ARUA's graft failure rate were precisely the expected rate, the estimated hazard ratio would be 1.0.

** The 95% credible interval, [0.11, 2.64], indicates the location of ARUA's true hazard ratio with 95% probability. The best estimate is 5% lower risk of graft failure compared to an average program, but ARUA's performance could plausibly range from 89% reduced risk up to 164% increased risk.

Figure C5L. Adult (18+) 1-year living donor graft failure HR estimate

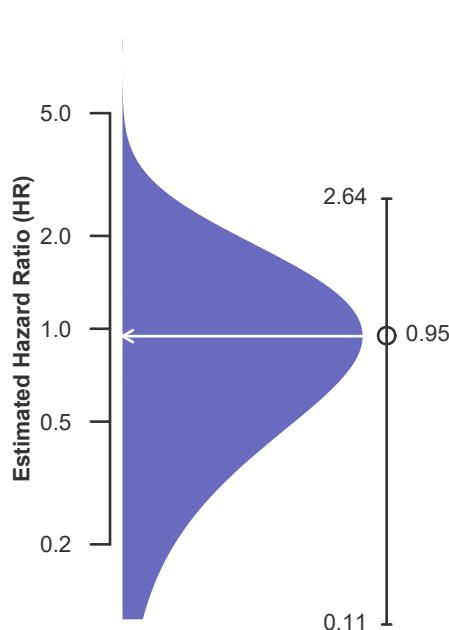
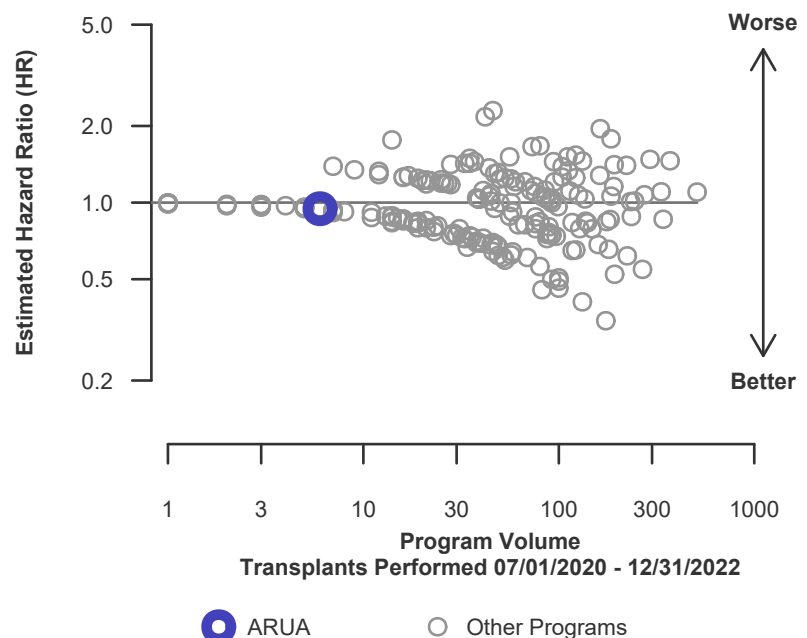


Figure C6L. Adult (18+) 1-year living donor graft failure HR program comparison





C. Transplant Information

Table C8. Adult (18+) 1-year Conditional survival with a functioning graft

Single organ transplants performed between 07/01/2020 and 12/31/2022

Deaths and retransplants are considered graft failures

	ARUA	U.S.
Number of transplants evaluated	389	55,629
Estimated probability of surviving with a functioning graft at 1 year, among patients with a functioning graft at day 90 & [95% CI] (unadjusted for patient and donor characteristics)	96.85% [95.93%-97.79%]	96.81% [96.74%-96.89%]
Expected probability of surviving with a functioning graft at 1 year, among patients with a functioning graft at day 90 (adjusted for patient and donor characteristics)	96.00%	--
Number of observed graft failures (including deaths) from day 91 through day 365 after transplant	11	1,537
Number of expected graft failures (including deaths) from day 91 through day 365 after transplant	13.74	--
Estimated hazard ratio*	0.83	--
95% credible interval for the hazard ratio**	[0.44, 1.33]	--

* The hazard ratio provides an estimate of how UAMS Medical Center's results compare with what was expected based on modeling the transplant outcomes from all U.S. programs. A ratio above 1 indicates higher than expected graft failure rates (e.g., a hazard ratio of 1.5 would indicate 50% higher risk), and a ratio below 1 indicates lower than expected graft failure rates (e.g., a hazard ratio of 0.75 would indicate 25% lower risk). If ARUA's graft failure rate were precisely the expected rate, the estimated hazard ratio would be 1.0.

** The 95% credible interval, [0.44, 1.33], indicates the location of ARUA's true hazard ratio with 95% probability. The best estimate is 17% lower risk of graft failure compared to an average program, but ARUA's performance could plausibly range from 56% reduced risk up to 33% increased risk.

Figure C7. Adult (18+) 1-year Conditional graft failure HR estimate

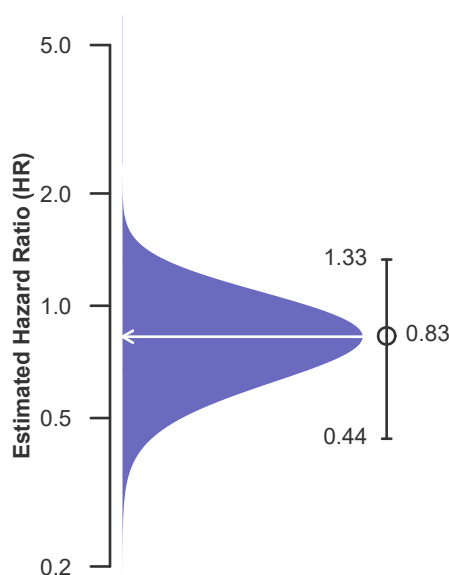
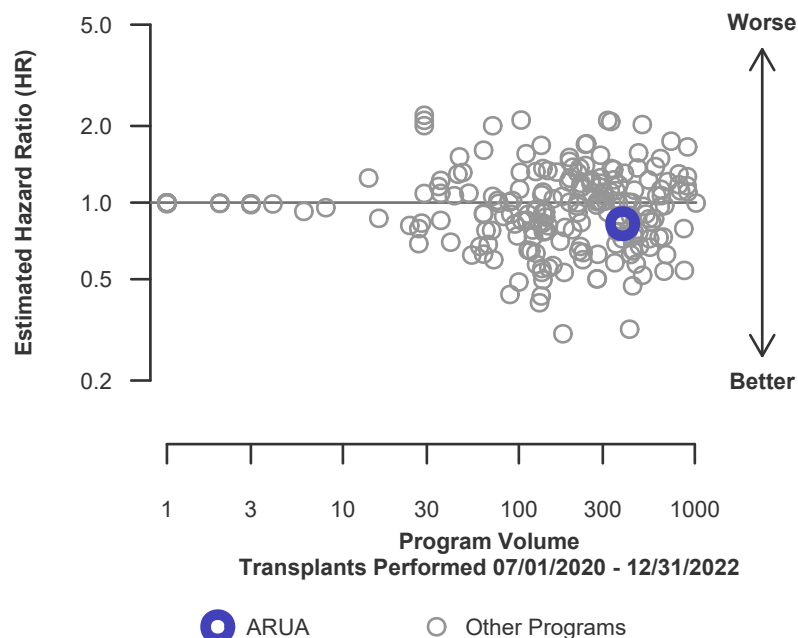


Figure C8. Adult (18+) 1-year Conditional graft failure HR program comparison





C. Transplant Information

Table C8D. Adult (18+) 1-year Conditional survival with a functioning deceased donor graft

Single organ transplants performed between 07/01/2020 and 12/31/2022

Deaths and retransplants are considered graft failures

	ARUA	U.S.
Number of transplants evaluated	383	41,660
Estimated probability of surviving with a functioning graft at 1 year, among patients with a functioning graft at day 90 & [95% CI] (unadjusted for patient and donor characteristics)	96.81% [95.88%-97.76%]	96.15% [96.06%-96.24%]
Expected probability of surviving with a functioning graft at 1 year, among patients with a functioning graft at day 90 (adjusted for patient and donor characteristics)	95.95%	--
Number of observed graft failures (including deaths) from day 91 through day 365 after transplant	11	1,388
Number of expected graft failures (including deaths) from day 91 through day 365 after transplant	13.69	--
Estimated hazard ratio*	0.83	--
95% credible interval for the hazard ratio**	[0.44, 1.34]	--

* The hazard ratio provides an estimate of how UAMS Medical Center's results compare with what was expected based on modeling the transplant outcomes from all U.S. programs. A ratio above 1 indicates higher than expected graft failure rates (e.g., a hazard ratio of 1.5 would indicate 50% higher risk), and a ratio below 1 indicates lower than expected graft failure rates (e.g., a hazard ratio of 0.75 would indicate 25% lower risk). If ARUA's graft failure rate were precisely the expected rate, the estimated hazard ratio would be 1.0.

** The 95% credible interval, [0.44, 1.34], indicates the location of ARUA's true hazard ratio with 95% probability. The best estimate is 17% lower risk of graft failure compared to an average program, but ARUA's performance could plausibly range from 56% reduced risk up to 34% increased risk.

Figure C7D. Adult (18+) 1-year Conditional deceased donor graft failure HR estimate

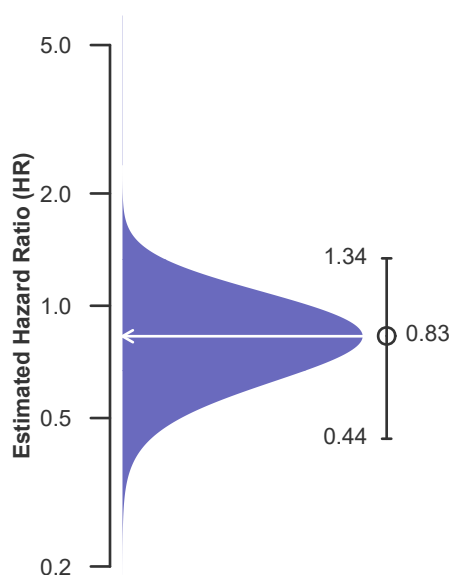
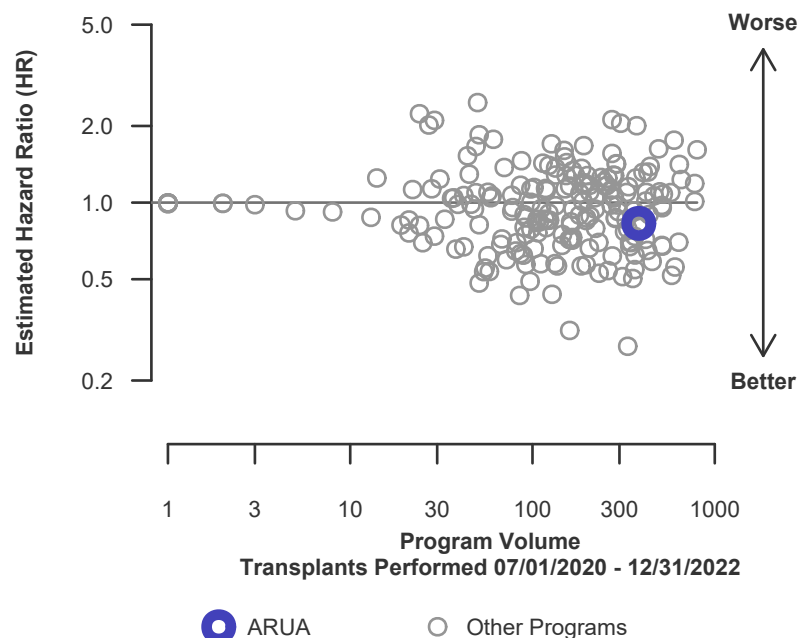


Figure C8D. Adult (18+) 1-year Conditional deceased donor graft failure HR program comparison





C. Transplant Information

Table C8L. Adult (18+) 1-year Conditional survival with a functioning living donor graft

Single organ transplants performed between 07/01/2020 and 12/31/2022

Deaths and retransplants are considered graft failures

	ARUA	U.S.
Number of transplants evaluated	6	13,969
Estimated probability of surviving with a functioning graft at 1 year, among patients with a functioning graft at day 90 & [95% CI] (unadjusted for patient and donor characteristics)	100.00% [100.00%-100.00%]	98.78% [98.69%-98.87%]
Expected probability of surviving with a functioning graft at 1 year, among patients with a functioning graft at day 90 (adjusted for patient and donor characteristics)	98.80%	--
Number of observed graft failures (including deaths) from day 91 through day 365 after transplant	0	149
Number of expected graft failures (including deaths) from day 91 through day 365 after transplant	0.05	--
Estimated hazard ratio*	0.98	--
95% credible interval for the hazard ratio**	[0.12, 2.72]	--

* The hazard ratio provides an estimate of how UAMS Medical Center's results compare with what was expected based on modeling the transplant outcomes from all U.S. programs. A ratio above 1 indicates higher than expected graft failure rates (e.g., a hazard ratio of 1.5 would indicate 50% higher risk), and a ratio below 1 indicates lower than expected graft failure rates (e.g., a hazard ratio of 0.75 would indicate 25% lower risk). If ARUA's graft failure rate were precisely the expected rate, the estimated hazard ratio would be 1.0.

** The 95% credible interval, [0.12, 2.72], indicates the location of ARUA's true hazard ratio with 95% probability. The best estimate is 2% lower risk of graft failure compared to an average program, but ARUA's performance could plausibly range from 88% reduced risk up to 172% increased risk.

Figure C7L. Adult (18+) 1-year Conditional living donor graft failure HR estimate

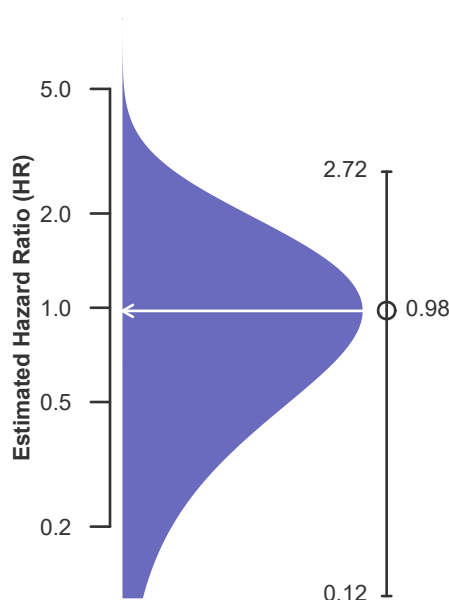
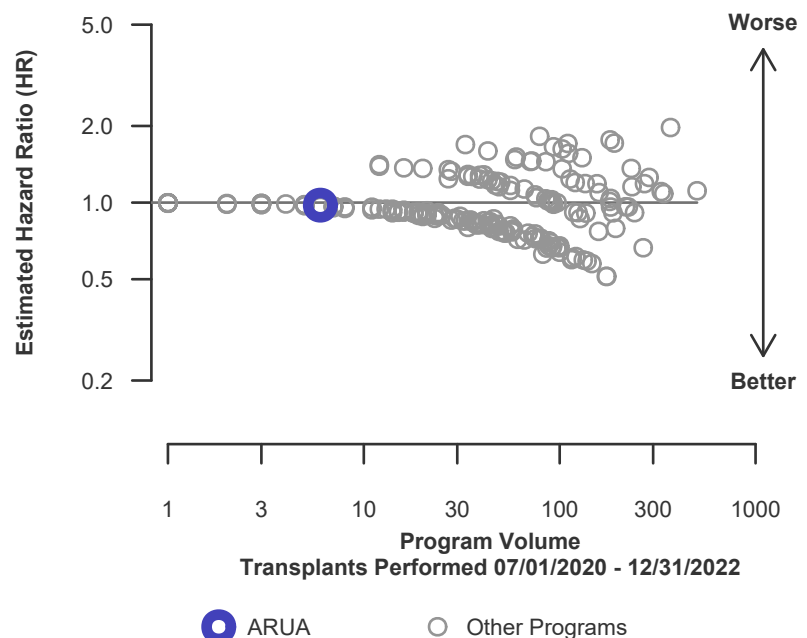


Figure C8L. Adult (18+) 1-year Conditional living donor graft failure HR program comparison





C. Transplant Information

Table C9. Adult (18+) 3-year survival with a functioning graft

Single organ transplants performed between 01/01/2018 and 03/12/2020, and 06/13/2020 and 06/30/2020

Deaths and retransplants are considered graft failures

Follow-up ends on 3/12/2020 for recipients transplanted prior to 3/13/2020

	ARUA	U.S.
Number of transplants evaluated	310	46,644
Estimated probability of surviving with a functioning graft at 3 years & [95% CI] (unadjusted for patient and donor characteristics)	95.32% [91.78%-98.99%]	89.99% [89.01%-90.98%]
Expected probability of surviving with a functioning graft at 3 years (adjusted for patient and donor characteristics)	87.48%	--
Number of observed graft failures (including deaths) during the first 3 years after transplant	8	2,201
Number of expected graft failures (including deaths) during the first 3 years after transplant	17.74	--
Estimated hazard ratio*	0.51	--
95% credible interval for the hazard ratio**	[0.24, 0.87]	--

* The hazard ratio provides an estimate of how UAMS Medical Center's results compare with what was expected based on modeling the transplant outcomes from all U.S. programs. A ratio above 1 indicates higher than expected graft failure rates (e.g., a hazard ratio of 1.5 would indicate 50% higher risk), and a ratio below 1 indicates lower than expected graft failure rates (e.g., a hazard ratio of 0.75 would indicate 25% lower risk). If ARUA's graft failure rate were precisely the expected rate, the estimated hazard ratio would be 1.0.

** The 95% credible interval, [0.24, 0.87], indicates the location of ARUA's true hazard ratio with 95% probability. The best estimate is 49% lower risk of graft failure compared to an average program, but ARUA's performance could plausibly range from 76% reduced risk up to 13% reduced risk.

Figure C9. Adult (18+) 3-year graft failure HR estimate

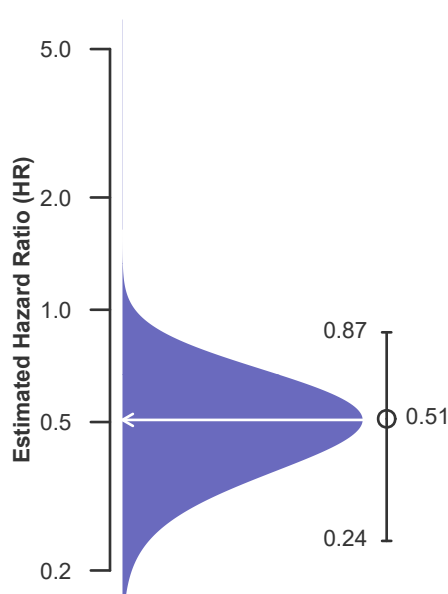
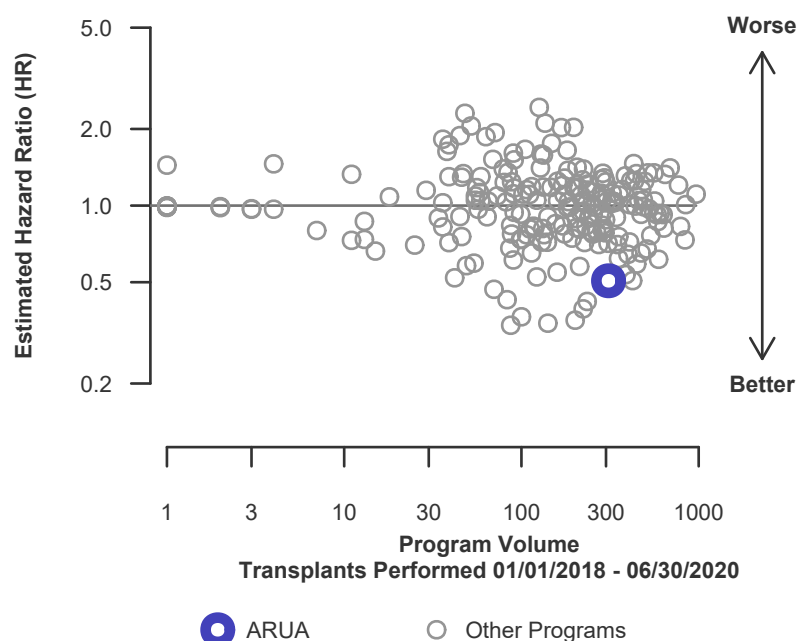


Figure C10. Adult (18+) 3-year graft failure HR program comparison





C. Transplant Information

Table C9D. Adult (18+) 3-year survival with a functioning deceased donor graft

Single organ transplants performed between 01/01/2018 and 03/12/2020, and 06/13/2020 and 06/30/2020

Deaths and retransplants are considered graft failures

Follow-up ends on 3/12/2020 for recipients transplanted prior to 3/13/2020

	ARUA	U.S.
Number of transplants evaluated	296	32,331
Estimated probability of surviving with a functioning graft at 3 years & [95% CI] (unadjusted for patient and donor characteristics)	95.44% [91.79%-99.24%]	87.59% [86.33%-88.87%]
Expected probability of surviving with a functioning graft at 3 years (adjusted for patient and donor characteristics)	87.06%	--
Number of observed graft failures (including deaths) during the first 3 years after transplant	7	1,898
Number of expected graft failures (including deaths) during the first 3 years after transplant	17.48	--
Estimated hazard ratio*	0.46	--
95% credible interval for the hazard ratio**	[0.21, 0.81]	--

* The hazard ratio provides an estimate of how UAMS Medical Center's results compare with what was expected based on modeling the transplant outcomes from all U.S. programs. A ratio above 1 indicates higher than expected graft failure rates (e.g., a hazard ratio of 1.5 would indicate 50% higher risk), and a ratio below 1 indicates lower than expected graft failure rates (e.g., a hazard ratio of 0.75 would indicate 25% lower risk). If ARUA's graft failure rate were precisely the expected rate, the estimated hazard ratio would be 1.0.

** The 95% credible interval, [0.21, 0.81], indicates the location of ARUA's true hazard ratio with 95% probability. The best estimate is 54% lower risk of graft failure compared to an average program, but ARUA's performance could plausibly range from 79% reduced risk up to 19% reduced risk.

Figure C9D. Adult (18+) 3-year deceased donor graft failure HR estimate

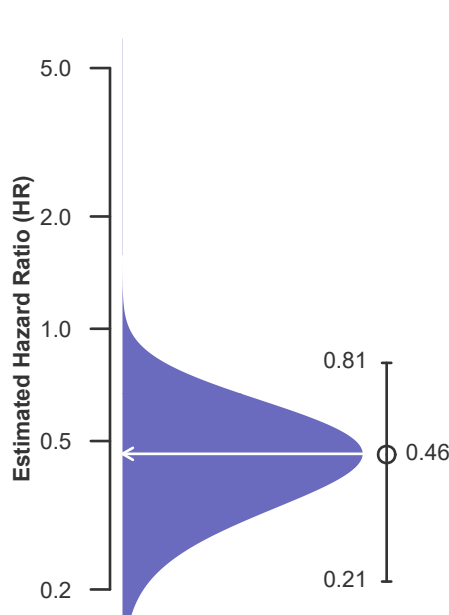
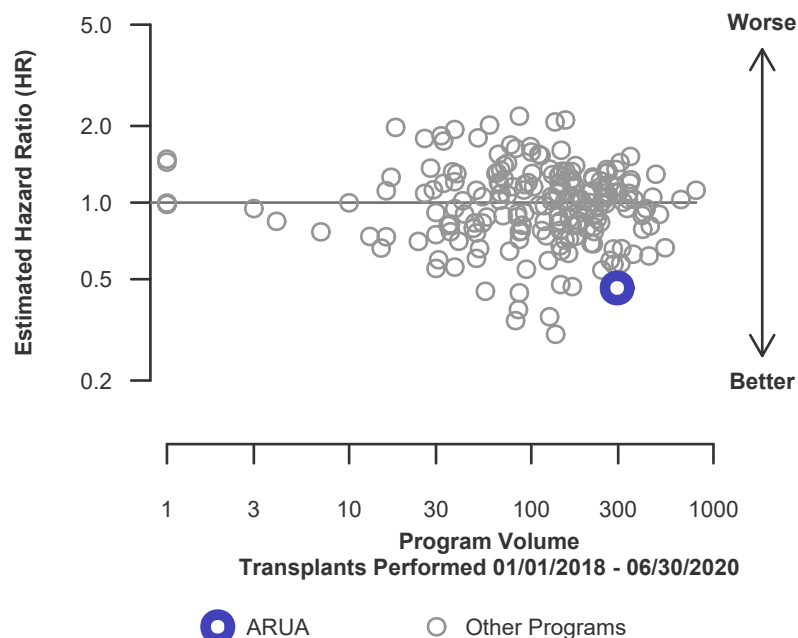


Figure C10D. Adult (18+) 3-year deceased donor graft failure HR program comparison





C. Transplant Information

Table C9L. Adult (18+) 3-year survival with a functioning living donor graft

Single organ transplants performed between 01/01/2018 and 03/12/2020, and 06/13/2020 and 06/30/2020

Deaths and retransplants are considered graft failures

Follow-up ends on 3/12/2020 for recipients transplanted prior to 3/13/2020

	ARUA	U.S.
Number of transplants evaluated	14	14,313
Estimated probability of surviving with a functioning graft at 3 years & [95% CI] (unadjusted for patient and donor characteristics)	92.86% [80.30%-100.00%]	95.58% [94.34%-96.83%]
Expected probability of surviving with a functioning graft at 3 years (adjusted for patient and donor characteristics)	96.28%	--
Number of observed graft failures (including deaths) during the first 3 years after transplant	1	303
Number of expected graft failures (including deaths) during the first 3 years after transplant	0.26	--
Estimated hazard ratio*	1.33	--
95% credible interval for the hazard ratio**	[0.27, 3.20]	--

* The hazard ratio provides an estimate of how UAMS Medical Center's results compare with what was expected based on modeling the transplant outcomes from all U.S. programs. A ratio above 1 indicates higher than expected graft failure rates (e.g., a hazard ratio of 1.5 would indicate 50% higher risk), and a ratio below 1 indicates lower than expected graft failure rates (e.g., a hazard ratio of 0.75 would indicate 25% lower risk). If ARUA's graft failure rate were precisely the expected rate, the estimated hazard ratio would be 1.0.

** The 95% credible interval, [0.27, 3.20], indicates the location of ARUA's true hazard ratio with 95% probability. The best estimate is 33% higher risk of graft failure compared to an average program, but ARUA's performance could plausibly range from 73% reduced risk up to 220% increased risk.

Figure C9L. Adult (18+) 3-year living donor graft failure HR estimate

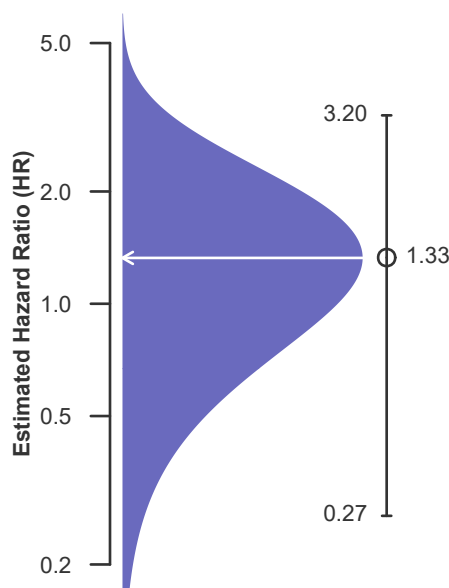
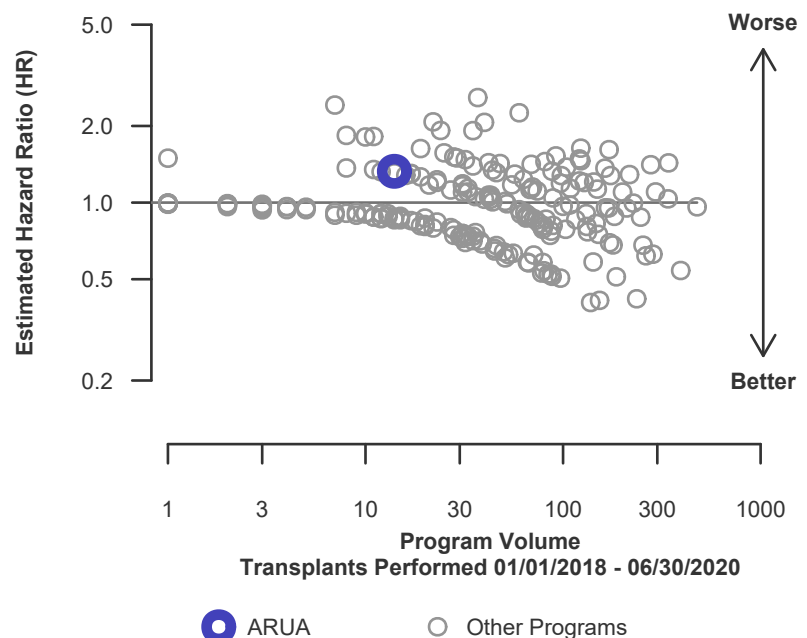


Figure C10L. Adult (18+) 3-year living donor graft failure HR program comparison





C. Transplant Information

Table C10. Pediatric (<18) 1-month survival with a functioning graft

Single organ transplants performed between 07/01/2020 and 12/31/2022

Deaths and retransplants are considered graft failures

This center did not perform any
transplants relevant to
this table during
07/01/2020-12/31/2022

Figure C11. Pediatric (<18) 1-month graft failure HR estimate

This center did not perform any
transplants relevant to
this figure during
07/01/2020-12/31/2022

Figure C12. Pediatric (<18) 1-month graft failure HR program comparison

This center did not perform any
transplants relevant to
this figure during
07/01/2020-12/31/2022



C. Transplant Information

Table C10D. Pediatric (<18) 1-month survival with a functioning deceased donor graft

Single organ transplants performed between 07/01/2020 and 12/31/2022

Deaths and retransplants are considered graft failures

This center did not perform any
transplants relevant to
this table during
07/01/2020-12/31/2022

Figure C11D. Pediatric (<18) 1-month deceased donor graft failure HR estimate

This center did not perform any
transplants relevant to
this figure during
07/01/2020-12/31/2022

Figure C12D. Pediatric (<18) 1-month deceased donor graft failure HR program comparison

This center did not perform any
transplants relevant to
this figure during
07/01/2020-12/31/2022



C. Transplant Information

Table C10L. Pediatric (<18) 1-month survival with a functioning living donor graft
Single organ transplants performed between 07/01/2020 and 12/31/2022
Deaths and retransplants are considered graft failures

This center did not perform any
transplants relevant to
this table during
07/01/2020-12/31/2022

Figure C11L. Pediatric (<18)
1-month living donor graft failure
HR estimate

This center did not perform any
transplants relevant to
this figure during
07/01/2020-12/31/2022

Figure C12L. Pediatric (<18) 1-month living donor graft failure
HR program comparison

This center did not perform any
transplants relevant to
this figure during
07/01/2020-12/31/2022



C. Transplant Information

Table C11. Pediatric (<18) 90-Day survival with a functioning graft

Single organ transplants performed between 07/01/2020 and 12/31/2022

Deaths and retransplants are considered graft failures

This center did not perform any
transplants relevant to
this table during
07/01/2020-12/31/2022

Figure C13. Pediatric (<18) 90-Day graft failure HR estimate

This center did not perform any
transplants relevant to
this figure during
07/01/2020-12/31/2022

Figure C14. Pediatric (<18) 90-Day graft failure HR program comparison

This center did not perform any
transplants relevant to
this figure during
07/01/2020-12/31/2022



C. Transplant Information

Table C11D. Pediatric (<18) 90-Day survival with a functioning deceased donor graft

Single organ transplants performed between 07/01/2020 and 12/31/2022

Deaths and retransplants are considered graft failures

This center did not perform any
transplants relevant to
this table during
07/01/2020-12/31/2022

Figure C13D. Pediatric (<18) 90-Day deceased donor graft failure HR estimate

This center did not perform any
transplants relevant to
this figure during
07/01/2020-12/31/2022

Figure C14D. Pediatric (<18) 90-Day deceased donor graft failure HR program comparison

This center did not perform any
transplants relevant to
this figure during
07/01/2020-12/31/2022



C. Transplant Information

Table C11L. Pediatric (<18) 90-Day survival with a functioning living donor graft

Single organ transplants performed between 07/01/2020 and 12/31/2022

Deaths and retransplants are considered graft failures

This center did not perform any
transplants relevant to
this table during
07/01/2020-12/31/2022

Figure C13L. Pediatric (<18) 90-Day living donor graft failure HR estimate

This center did not perform any
transplants relevant to
this figure during
07/01/2020-12/31/2022

Figure C14L. Pediatric (<18) 90-Day living donor graft failure HR program comparison

This center did not perform any
transplants relevant to
this figure during
07/01/2020-12/31/2022



C. Transplant Information

Table C12. Pediatric (<18) 1-year survival with a functioning graft

Single organ transplants performed between 07/01/2020 and 12/31/2022

Deaths and retransplants are considered graft failures

This center did not perform any
transplants relevant to
this table during
07/01/2020-12/31/2022

Figure C15. Pediatric (<18) 1-year graft failure HR estimate

This center did not perform any
transplants relevant to
this figure during
07/01/2020-12/31/2022

Figure C16. Pediatric (<18) 1-year graft failure HR program comparison

This center did not perform any
transplants relevant to
this figure during
07/01/2020-12/31/2022



C. Transplant Information

Table C12D. Pediatric (<18) 1-year survival with a functioning deceased donor graft

Single organ transplants performed between 07/01/2020 and 12/31/2022

Deaths and retransplants are considered graft failures

This center did not perform any
transplants relevant to
this table during
07/01/2020-12/31/2022

Figure C15D. Pediatric (<18) 1-year deceased donor graft failure HR estimate

This center did not perform any
transplants relevant to
this figure during
07/01/2020-12/31/2022

Figure C16D. Pediatric (<18) 1-year deceased donor graft failure HR program comparison

This center did not perform any
transplants relevant to
this figure during
07/01/2020-12/31/2022



C. Transplant Information

Table C12L. Pediatric (<18) 1-year survival with a functioning living donor graft

Single organ transplants performed between 07/01/2020 and 12/31/2022

Deaths and retransplants are considered graft failures

This center did not perform any
transplants relevant to
this table during
07/01/2020-12/31/2022

Figure C15L. Pediatric (<18) 1-year living donor graft failure HR estimate

This center did not perform any
transplants relevant to
this figure during
07/01/2020-12/31/2022

Figure C16L. Pediatric (<18) 1-year living donor graft failure HR program comparison

This center did not perform any
transplants relevant to
this figure during
07/01/2020-12/31/2022



C. Transplant Information

Table C13. Pediatric (<18) 1-year Conditional survival with a functioning graft

Single organ transplants performed between 07/01/2020 and 12/31/2022

Deaths and retransplants are considered graft failures

This center did not perform any
transplants relevant to
this table during
07/01/2020-12/31/2022

Figure C17. Pediatric (<18) 1-year Conditional graft failure HR estimate

This center did not perform any
transplants relevant to
this figure during
07/01/2020-12/31/2022

Figure C18. Pediatric (<18) 1-year Conditional graft failure HR program comparison

This center did not perform any
transplants relevant to
this figure during
07/01/2020-12/31/2022



C. Transplant Information

Table C13D. Pediatric (<18) 1-year Conditional survival with a functioning deceased donor graft
Single organ transplants performed between 07/01/2020 and 12/31/2022
Deaths and retransplants are considered graft failures

This center did not perform any
transplants relevant to
this table during
07/01/2020-12/31/2022

**Figure C17D. Pediatric (<18)
1-year Conditional deceased
donor graft failure HR estimate**

This center did not perform any
transplants relevant to
this figure during
07/01/2020-12/31/2022

**Figure C18D. Pediatric (<18) 1-year Conditional deceased
donor graft failure HR program comparison**

This center did not perform any
transplants relevant to
this figure during
07/01/2020-12/31/2022



C. Transplant Information

Table C13L. Pediatric (<18) 1-year Conditional survival with a functioning living donor graft

Single organ transplants performed between 07/01/2020 and 12/31/2022

Deaths and retransplants are considered graft failures

This center did not perform any
transplants relevant to
this table during
07/01/2020-12/31/2022

Figure C17L. Pediatric (<18) 1-year Conditional living donor graft failure HR estimate

This center did not perform any
transplants relevant to
this figure during
07/01/2020-12/31/2022

Figure C18L. Pediatric (<18) 1-year Conditional living donor graft failure HR program comparison

This center did not perform any
transplants relevant to
this figure during
07/01/2020-12/31/2022



C. Transplant Information

Table C14. Pediatric (<18) 3-year survival with a functioning graft

Single organ transplants performed between 01/01/2018 and 03/12/2020, and 06/13/2020 and 06/30/2020

Deaths and retransplants are considered graft failures

Follow-up ends on 3/12/2020 for recipients transplanted prior to 3/13/2020

This center did not perform any
transplants relevant to
this table during
01/01/2018-06/30/2020

Figure C19. Pediatric (<18) 3-year graft failure HR estimate

This center did not perform any
transplants relevant to
this figure during
01/01/2018-06/30/2020

Figure C20. Pediatric (<18) 3-year graft failure HR program comparison

This center did not perform any
transplants relevant to
this figure during
01/01/2018-06/30/2020



C. Transplant Information

Table C14D. Pediatric (<18) 3-year survival with a functioning deceased donor graft

Single organ transplants performed between 01/01/2018 and 03/12/2020, and 06/13/2020 and 06/30/2020

Deaths and retransplants are considered graft failures

Follow-up ends on 3/12/2020 for recipients transplanted prior to 3/13/2020

This center did not perform any
transplants relevant to
this table during
01/01/2018-06/30/2020

Figure C19D. Pediatric (<18) 3-year deceased donor graft failure HR estimate

This center did not perform any
transplants relevant to
this figure during
01/01/2018-06/30/2020

Figure C20D. Pediatric (<18) 3-year deceased donor graft failure HR program comparison

This center did not perform any
transplants relevant to
this figure during
01/01/2018-06/30/2020



C. Transplant Information

Table C14L. Pediatric (<18) 3-year survival with a functioning living donor graft

Single organ transplants performed between 01/01/2018 and 03/12/2020, and 06/13/2020 and 06/30/2020

Deaths and retransplants are considered graft failures

Follow-up ends on 3/12/2020 for recipients transplanted prior to 3/13/2020

This center did not perform any
transplants relevant to
this table during
01/01/2018-06/30/2020

Figure C19L. Pediatric (<18) 3-year living donor graft failure HR estimate

This center did not perform any
transplants relevant to
this figure during
01/01/2018-06/30/2020

Figure C20L. Pediatric (<18) 3-year living donor graft failure HR program comparison

This center did not perform any
transplants relevant to
this figure during
01/01/2018-06/30/2020



C. Transplant Information

Table C15. Adult (18+) 1-month patient survival

Single organ transplants performed between 07/01/2020 and 12/31/2022
Retransplants excluded

	ARUA	U.S.
Number of transplants evaluated	364	51,321
Estimated probability of surviving at 1 month & [95% CI] (unadjusted for patient and donor characteristics)	99.73% [99.19%-100.00%]	99.46% [99.39%-99.52%]
Expected probability of surviving at 1 month (adjusted for patient and donor characteristics)	99.39%	--
Number of observed deaths during the first month after transplant	1	279
Number of expected deaths during the first month after transplant	2.21	--
Estimated hazard ratio*	0.71	--
95% credible interval for the hazard ratio**	[0.15, 1.71]	--

* The hazard ratio provides an estimate of how UAMS Medical Center's results compare with what was expected based on modeling the transplant outcomes from all U.S. programs. A ratio above 1 indicates higher than expected patient death rates (e.g., a hazard ratio of 1.5 would indicate 50% higher risk), and a ratio below 1 indicates lower than expected patient death rates (e.g., a hazard ratio of 0.75 would indicate 25% lower risk). If ARUA's patient death rate were precisely the expected rate, the estimated hazard ratio would be 1.0.

** The 95% credible interval, [0.15, 1.71], indicates the location of ARUA's true hazard ratio with 95% probability. The best estimate is 29% lower risk of patient death compared to an average program, but ARUA's performance could plausibly range from 85% reduced risk up to 71% increased risk.

Figure C21. Adult (18+) 1-month patient death HR estimate

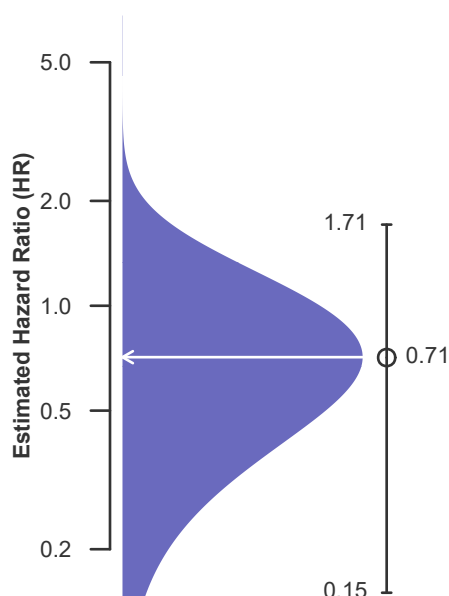
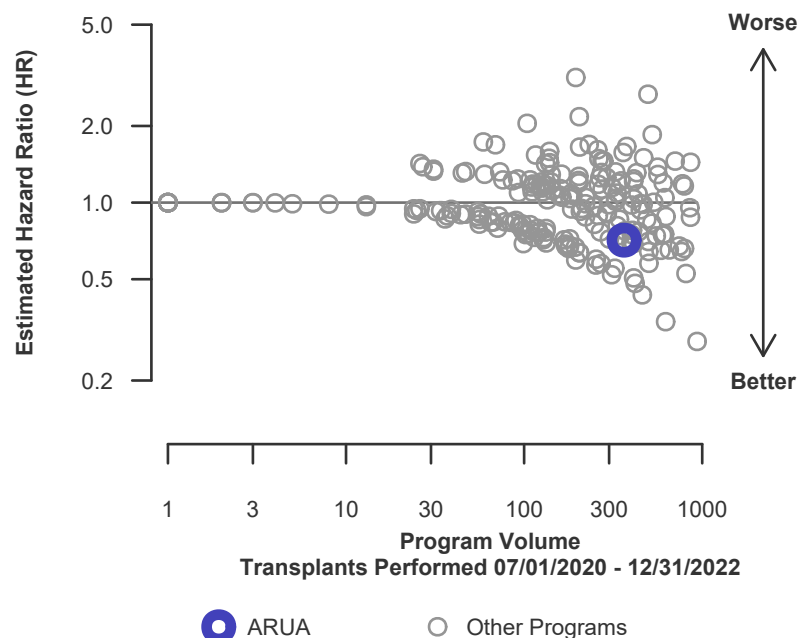


Figure C22. Adult (18+) 1-month patient death HR program comparison





C. Transplant Information

Table C15D. Adult (18+) 1-month patient survival (deceased donor graft recipients)

Single organ transplants performed between 07/01/2020 and 12/31/2022

Retransplants excluded

	ARUA	U.S.
Number of transplants evaluated	359	38,427
Estimated probability of surviving at 1 month & [95% CI] (unadjusted for patient and donor characteristics)	99.72% [99.18%-100.00%]	99.35% [99.27%-99.43%]
Expected probability of surviving at 1 month (adjusted for patient and donor characteristics)	99.39%	--
Number of observed deaths during the first month after transplant	1	250
Number of expected deaths during the first month after transplant	2.21	--
Estimated hazard ratio*	0.71	--
95% credible interval for the hazard ratio**	[0.15, 1.72]	--

* The hazard ratio provides an estimate of how UAMS Medical Center's results compare with what was expected based on modeling the transplant outcomes from all U.S. programs. A ratio above 1 indicates higher than expected patient death rates (e.g., a hazard ratio of 1.5 would indicate 50% higher risk), and a ratio below 1 indicates lower than expected patient death rates (e.g., a hazard ratio of 0.75 would indicate 25% lower risk). If ARUA's patient death rate were precisely the expected rate, the estimated hazard ratio would be 1.0.

** The 95% credible interval, [0.15, 1.72], indicates the location of ARUA's true hazard ratio with 95% probability. The best estimate is 29% lower risk of patient death compared to an average program, but ARUA's performance could plausibly range from 85% reduced risk up to 72% increased risk.

Figure C21D. Adult (18+) 1-month patient death HR estimate (deceased donor grafts)

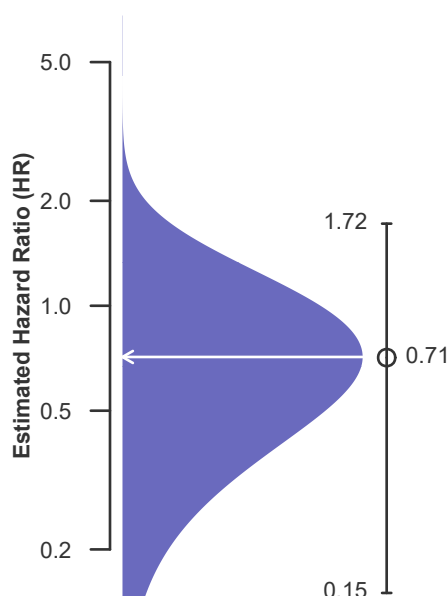
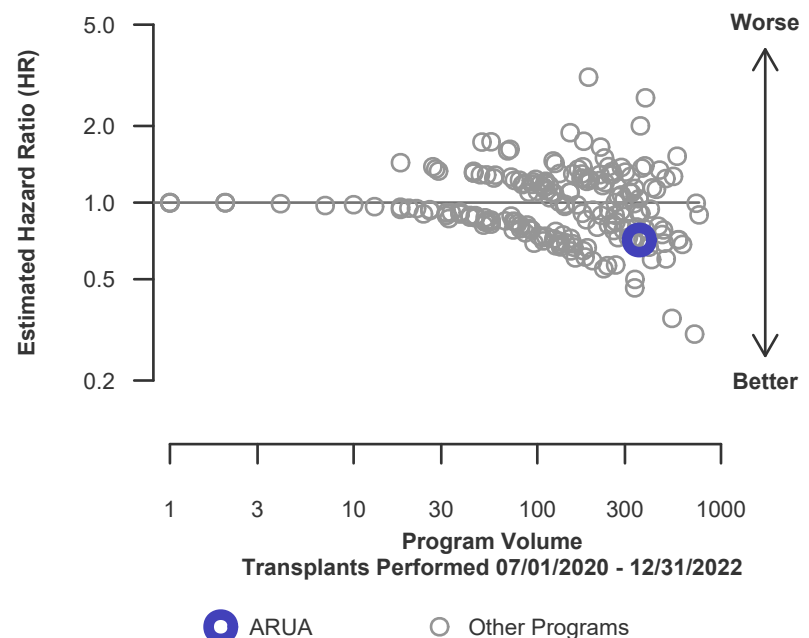


Figure C22D. Adult (18+) 1-month patient death HR program comparison (deceased donor grafts)





C. Transplant Information

Table C15L. Adult (18+) 1-month patient survival (living donor graft recipients)

Single organ transplants performed between 07/01/2020 and 12/31/2022

Retransplants excluded

	ARUA	U.S.
Number of transplants evaluated	5	12,894
Estimated probability of surviving at 1 month & [95% CI] (unadjusted for patient and donor characteristics)	100.00% [100.00%-100.00%]	99.78% [99.69%-99.86%]
Expected probability of surviving at 1 month (adjusted for patient and donor characteristics)	99.87%	--
Number of observed deaths during the first month after transplant	0	29
Number of expected deaths during the first month after transplant	0.01	--
Estimated hazard ratio*	1.00	--
95% credible interval for the hazard ratio**	[0.12, 2.78]	--

* The hazard ratio provides an estimate of how UAMS Medical Center's results compare with what was expected based on modeling the transplant outcomes from all U.S. programs. A ratio above 1 indicates higher than expected patient death rates (e.g., a hazard ratio of 1.5 would indicate 50% higher risk), and a ratio below 1 indicates lower than expected patient death rates (e.g., a hazard ratio of 0.75 would indicate 25% lower risk). If ARUA's patient death rate were precisely the expected rate, the estimated hazard ratio would be 1.0.

** The 95% credible interval, [0.12, 2.78], indicates the location of ARUA's true hazard ratio with 95% probability. The best estimate is 0% lower risk of patient death compared to an average program, but ARUA's performance could plausibly range from 88% reduced risk up to 178% increased risk.

Figure C21L. Adult (18+) 1-month patient death HR estimate (living donor grafts)

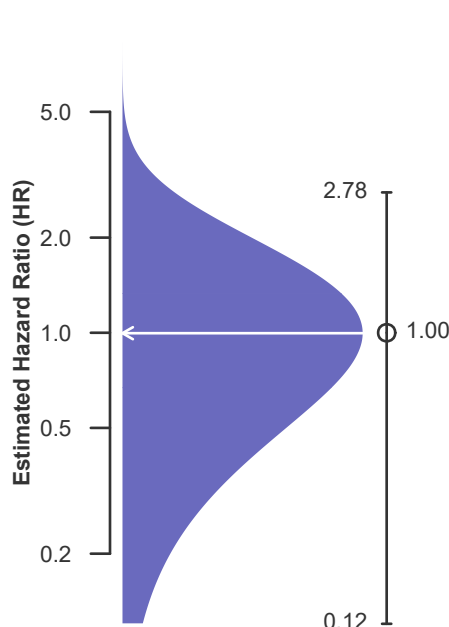
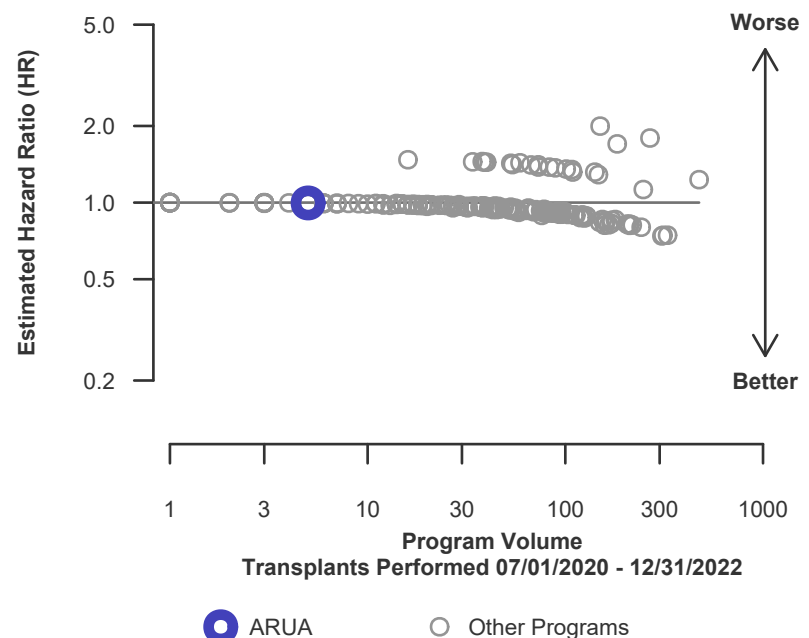


Figure C22L. Adult (18+) 1-month patient death HR program comparison (living donor grafts)





C. Transplant Information

Table C16. Adult (18+) 1-year patient survival

Single organ transplants performed between 07/01/2020 and 12/31/2022
Retransplants excluded

	ARUA	U.S.
Number of transplants evaluated	364	51,321
Estimated probability of surviving at 1 year & [95% CI] (unadjusted for patient and donor characteristics)	97.33% [95.61%-99.08%]	96.27% [96.09%-96.44%]
Expected probability of surviving at 1 year (adjusted for patient and donor characteristics)	95.80%	--
Number of observed deaths during the first year after transplant	9	1,733
Number of expected deaths during the first year after transplant	14.18	--
Estimated hazard ratio*	0.68	--
95% credible interval for the hazard ratio**	[0.34, 1.14]	--

* The hazard ratio provides an estimate of how UAMS Medical Center's results compare with what was expected based on modeling the transplant outcomes from all U.S. programs. A ratio above 1 indicates higher than expected patient death rates (e.g., a hazard ratio of 1.5 would indicate 50% higher risk), and a ratio below 1 indicates lower than expected patient death rates (e.g., a hazard ratio of 0.75 would indicate 25% lower risk). If ARUA's patient death rate were precisely the expected rate, the estimated hazard ratio would be 1.0.

** The 95% credible interval, [0.34, 1.14], indicates the location of ARUA's true hazard ratio with 95% probability. The best estimate is 32% lower risk of patient death compared to an average program, but ARUA's performance could plausibly range from 66% reduced risk up to 14% increased risk.

Figure C23. Adult (18+) 1-year patient death HR estimate

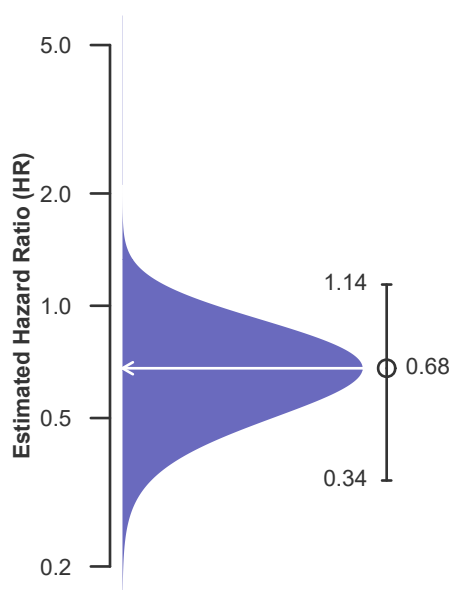
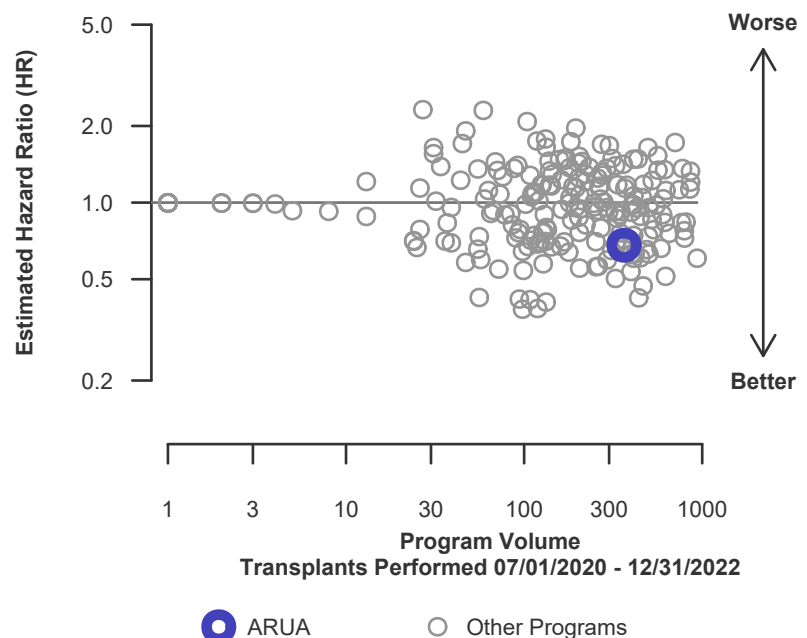


Figure C24. Adult (18+) 1-year patient death HR program comparison





C. Transplant Information

Table C16D. Adult (18+) 1-year patient survival (deceased donor graft recipients)

Single organ transplants performed between 07/01/2020 and 12/31/2022

Retransplants excluded

	ARUA	U.S.
Number of transplants evaluated	359	38,427
Estimated probability of surviving at 1 year & [95% CI] (unadjusted for patient and donor characteristics)	97.29% [95.55%-99.06%]	95.50% [95.28%-95.72%]
Expected probability of surviving at 1 year (adjusted for patient and donor characteristics)	95.76%	--
Number of observed deaths during the first year after transplant	9	1,561
Number of expected deaths during the first year after transplant	14.15	--
Estimated hazard ratio*	0.68	--
95% credible interval for the hazard ratio**	[0.34, 1.14]	--

* The hazard ratio provides an estimate of how UAMS Medical Center's results compare with what was expected based on modeling the transplant outcomes from all U.S. programs. A ratio above 1 indicates higher than expected patient death rates (e.g., a hazard ratio of 1.5 would indicate 50% higher risk), and a ratio below 1 indicates lower than expected patient death rates (e.g., a hazard ratio of 0.75 would indicate 25% lower risk). If ARUA's patient death rate were precisely the expected rate, the estimated hazard ratio would be 1.0.

** The 95% credible interval, [0.34, 1.14], indicates the location of ARUA's true hazard ratio with 95% probability. The best estimate is 32% lower risk of patient death compared to an average program, but ARUA's performance could plausibly range from 66% reduced risk up to 14% increased risk.

Figure C23D. Adult (18+) 1-year patient death HR estimate (deceased donor grafts)

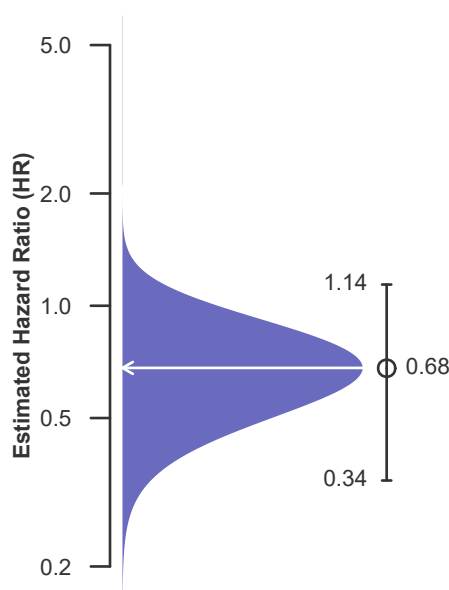
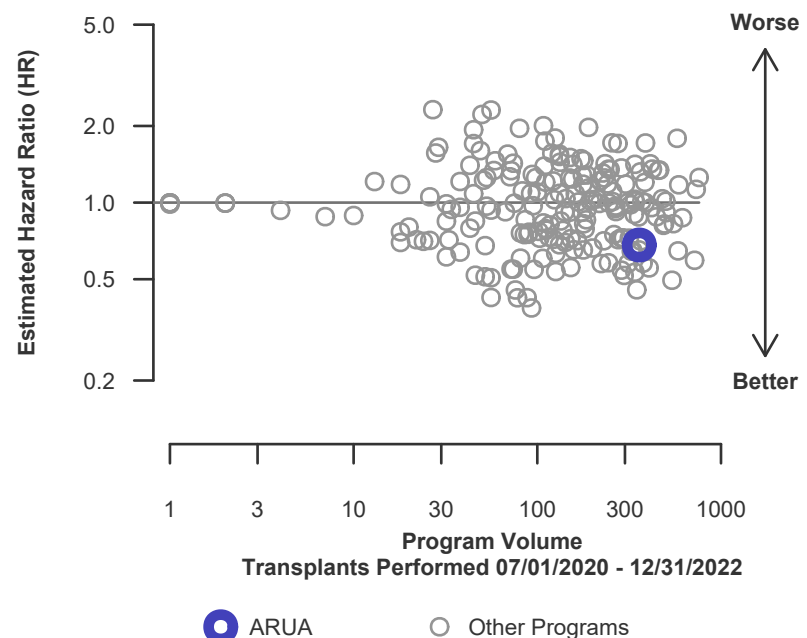


Figure C24D. Adult (18+) 1-year patient death HR program comparison (deceased donor grafts)





C. Transplant Information

Table C16L. Adult (18+) 1-year patient survival (living donor graft recipients)

Single organ transplants performed between 07/01/2020 and 12/31/2022

Retransplants excluded

	ARUA	U.S.
Number of transplants evaluated	5	12,894
Estimated probability of surviving at 1 year & [95% CI] (unadjusted for patient and donor characteristics)	100.00% [100.00%-100.00%]	98.54% [98.32%-98.76%]
Expected probability of surviving at 1 year (adjusted for patient and donor characteristics)	99.15%	--
Number of observed deaths during the first year after transplant	0	172
Number of expected deaths during the first year after transplant	0.03	--
Estimated hazard ratio*	0.98	--
95% credible interval for the hazard ratio**	[0.12, 2.74]	--

* The hazard ratio provides an estimate of how UAMS Medical Center's results compare with what was expected based on modeling the transplant outcomes from all U.S. programs. A ratio above 1 indicates higher than expected patient death rates (e.g., a hazard ratio of 1.5 would indicate 50% higher risk), and a ratio below 1 indicates lower than expected patient death rates (e.g., a hazard ratio of 0.75 would indicate 25% lower risk). If ARUA's patient death rate were precisely the expected rate, the estimated hazard ratio would be 1.0.

** The 95% credible interval, [0.12, 2.74], indicates the location of ARUA's true hazard ratio with 95% probability. The best estimate is 2% lower risk of patient death compared to an average program, but ARUA's performance could plausibly range from 88% reduced risk up to 174% increased risk.

Figure C23L. Adult (18+) 1-year patient death HR estimate (living donor grafts)

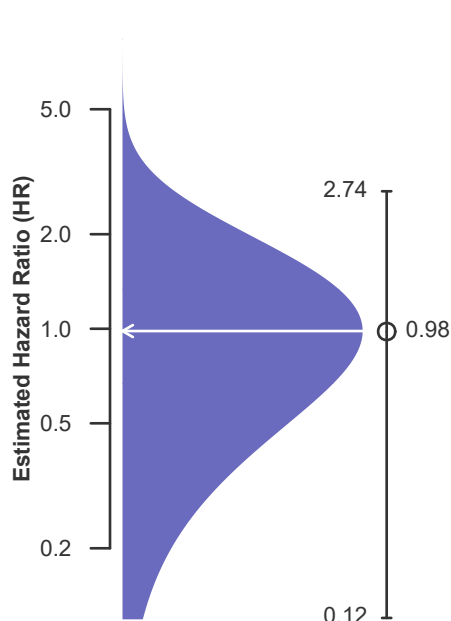
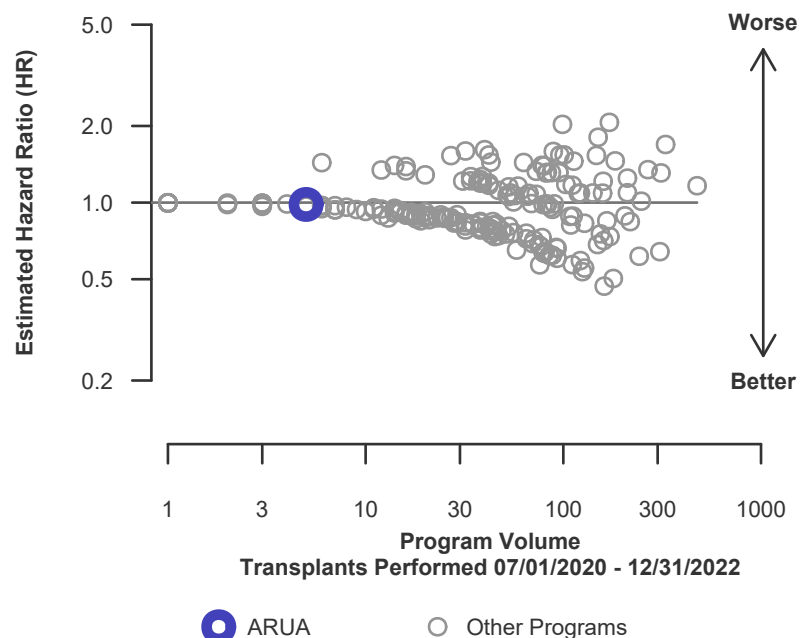


Figure C24L. Adult (18+) 1-year patient death HR program comparison (living donor grafts)





C. Transplant Information

Table C17. Adult (18+) 3-year patient survival

Single organ transplants performed between 01/01/2018 and 03/12/2020, and 06/13/2020 and 06/30/2020

Retransplants excluded

Follow-up ends on 3/12/2020 for recipients transplanted prior to 3/13/2020

	ARUA	U.S.
Number of transplants evaluated	294	41,537
Estimated probability of surviving at 3 years & [95% CI] (unadjusted for patient and donor characteristics)	97.36% [95.01%-99.76%]	92.98% [91.96%-94.02%]
Expected probability of surviving at 3 years (adjusted for patient and donor characteristics)	92.65%	--
Number of observed deaths during the first 3 years after transplant	5	1,094
Number of expected deaths during the first 3 years after transplant	7.78	--
Estimated hazard ratio*	0.72	--
95% credible interval for the hazard ratio**	[0.29, 1.34]	--

* The hazard ratio provides an estimate of how UAMS Medical Center's results compare with what was expected based on modeling the transplant outcomes from all U.S. programs. A ratio above 1 indicates higher than expected patient death rates (e.g., a hazard ratio of 1.5 would indicate 50% higher risk), and a ratio below 1 indicates lower than expected patient death rates (e.g., a hazard ratio of 0.75 would indicate 25% lower risk). If ARUA's patient death rate were precisely the expected rate, the estimated hazard ratio would be 1.0.

** The 95% credible interval, [0.29, 1.34], indicates the location of ARUA's true hazard ratio with 95% probability. The best estimate is 28% lower risk of patient death compared to an average program, but ARUA's performance could plausibly range from 71% reduced risk up to 34% increased risk.

Figure C25. Adult (18+) 3-year patient death HR estimate

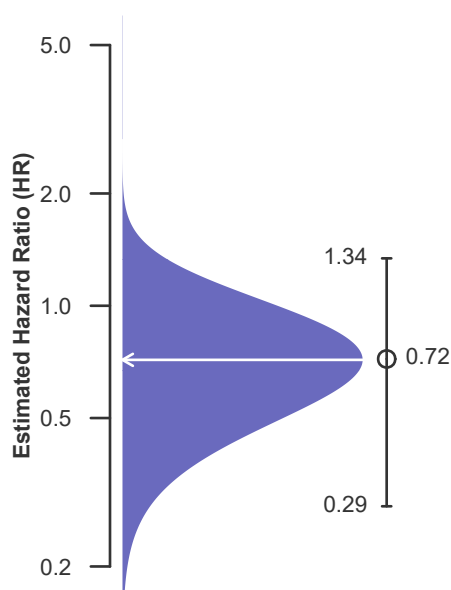
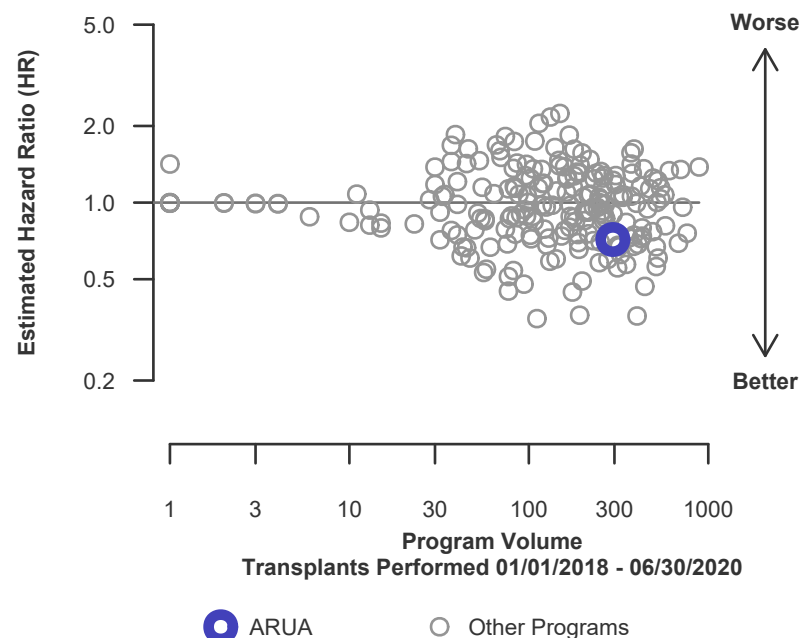


Figure C26. Adult (18+) 3-year patient death HR program comparison





C. Transplant Information

Table C17D. Adult (18+) 3-year patient survival (deceased donor graft recipients)

Single organ transplants performed between 01/01/2018 and 03/12/2020, and 06/13/2020 and 06/30/2020

Retransplants excluded

Follow-up ends on 3/12/2020 for recipients transplanted prior to 3/13/2020

	ARUA	U.S.
Number of transplants evaluated	281	28,569
Estimated probability of surviving at 3 years & [95% CI] (unadjusted for patient and donor characteristics)	97.20% [94.72%-99.76%]	91.06% [89.72%-92.42%]
Expected probability of surviving at 3 years (adjusted for patient and donor characteristics)	92.38%	--
Number of observed deaths during the first 3 years after transplant	5	960
Number of expected deaths during the first 3 years after transplant	7.70	--
Estimated hazard ratio*	0.72	--
95% credible interval for the hazard ratio**	[0.29, 1.35]	--

* The hazard ratio provides an estimate of how UAMS Medical Center's results compare with what was expected based on modeling the transplant outcomes from all U.S. programs. A ratio above 1 indicates higher than expected patient death rates (e.g., a hazard ratio of 1.5 would indicate 50% higher risk), and a ratio below 1 indicates lower than expected patient death rates (e.g., a hazard ratio of 0.75 would indicate 25% lower risk). If ARUA's patient death rate were precisely the expected rate, the estimated hazard ratio would be 1.0.

** The 95% credible interval, [0.29, 1.35], indicates the location of ARUA's true hazard ratio with 95% probability. The best estimate is 28% lower risk of patient death compared to an average program, but ARUA's performance could plausibly range from 71% reduced risk up to 35% increased risk.

Figure C25D. Adult (18+) 3-year patient death HR estimate (deceased donor grafts)

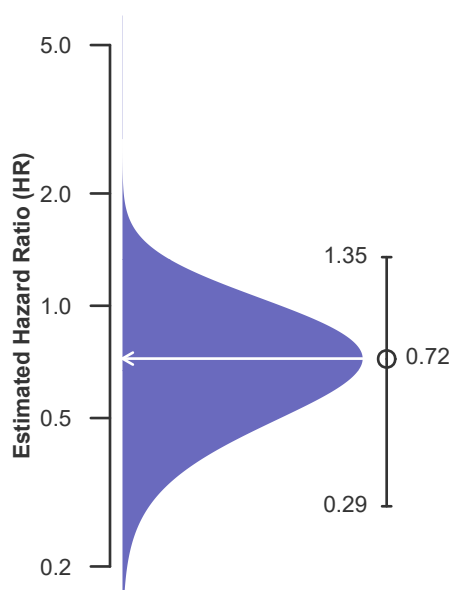
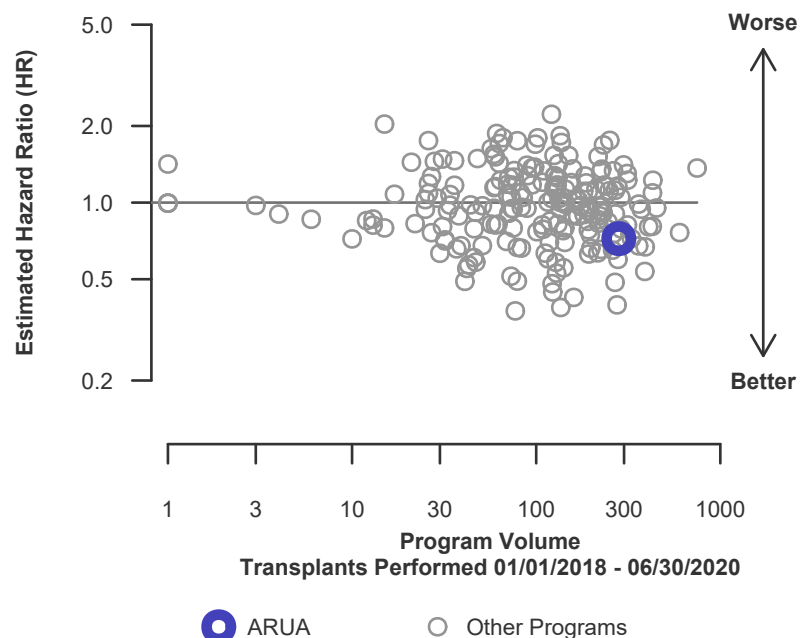


Figure C26D. Adult (18+) 3-year patient death HR program comparison (deceased donor grafts)





C. Transplant Information

Table C17L. Adult (18+) 3-year patient survival (living donor graft recipients)

Single organ transplants performed between 01/01/2018 and 03/12/2020, and 06/13/2020 and 06/30/2020

Retransplants excluded

Follow-up ends on 3/12/2020 for recipients transplanted prior to 3/13/2020

	ARUA	U.S.
Number of transplants evaluated	13	12,968
Estimated probability of surviving at 3 years & [95% CI] (unadjusted for patient and donor characteristics)	100.00% [100.00%-100.00%]	97.46% [96.34%-98.60%]
Expected probability of surviving at 3 years (adjusted for patient and donor characteristics)	98.61%	--
Number of observed deaths during the first 3 years after transplant	0	134
Number of expected deaths during the first 3 years after transplant	0.08	--
Estimated hazard ratio*	0.96	--
95% credible interval for the hazard ratio**	[0.12, 2.68]	--

* The hazard ratio provides an estimate of how UAMS Medical Center's results compare with what was expected based on modeling the transplant outcomes from all U.S. programs. A ratio above 1 indicates higher than expected patient death rates (e.g., a hazard ratio of 1.5 would indicate 50% higher risk), and a ratio below 1 indicates lower than expected patient death rates (e.g., a hazard ratio of 0.75 would indicate 25% lower risk). If ARUA's patient death rate were precisely the expected rate, the estimated hazard ratio would be 1.0.

** The 95% credible interval, [0.12, 2.68], indicates the location of ARUA's true hazard ratio with 95% probability. The best estimate is 4% lower risk of patient death compared to an average program, but ARUA's performance could plausibly range from 88% reduced risk up to 168% increased risk.

Figure C25L. Adult (18+) 3-year patient death HR estimate (living donor grafts)

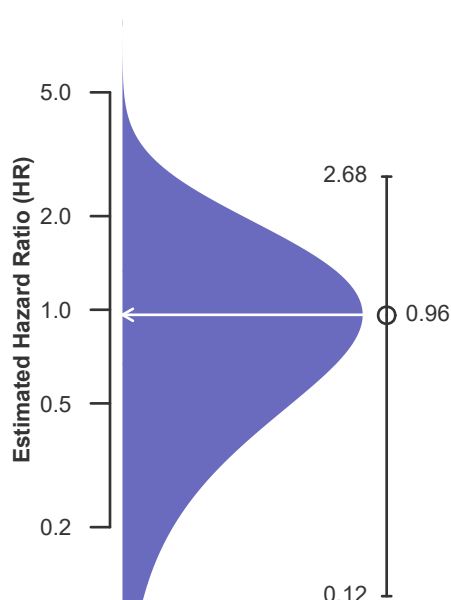
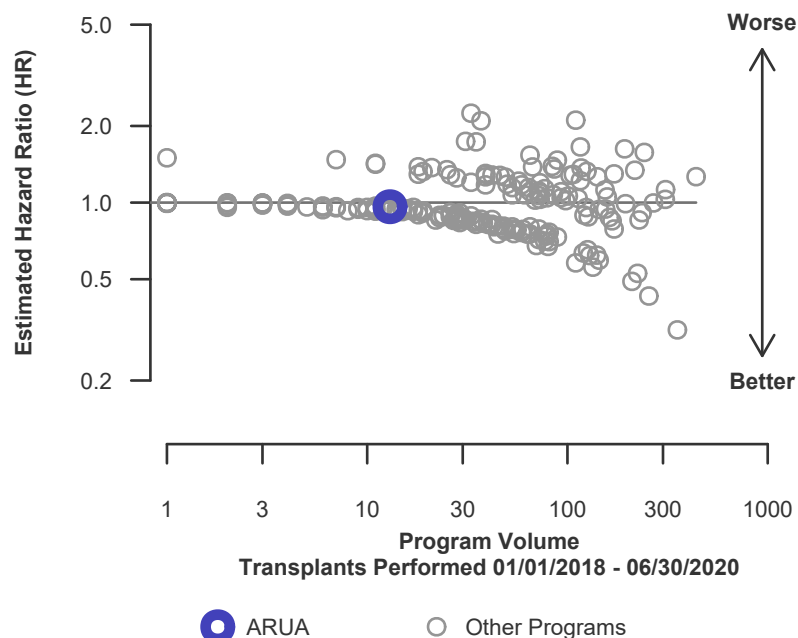


Figure C26L. Adult (18+) 3-year patient death HR program comparison (living donor grafts)





C. Transplant Information

Table C18. Pediatric (<18) 1-month patient survival

Single organ transplants performed between 07/01/2020 and 12/31/2022

Retransplants excluded

This center did not perform any
transplants relevant to
this table during
07/01/2020-12/31/2022

Figure C27. Pediatric (<18) 1-month patient death HR estimate

This center did not perform any
transplants relevant to
this figure during
07/01/2020-12/31/2022

Figure C28. Pediatric (<18) 1-month patient death HR program comparison

This center did not perform any
transplants relevant to
this figure during
07/01/2020-12/31/2022



C. Transplant Information

Table C18D. Pediatric (<18) 1-month patient survival (deceased donor graft recipients)
Single organ transplants performed between 07/01/2020 and 12/31/2022
Retransplants excluded

This center did not perform any
transplants relevant to
this table during
07/01/2020-12/31/2022

Figure C27D. Pediatric (<18)
1-month patient death HR
estimate (deceased donor grafts)

This center did not perform any
transplants relevant to
this figure during
07/01/2020-12/31/2022

Figure C28D. Pediatric (<18) 1-month patient death HR
program comparison (deceased donor grafts)

This center did not perform any
transplants relevant to
this figure during
07/01/2020-12/31/2022



C. Transplant Information

Table C18L. Pediatric (<18) 1-month patient survival (living donor graft recipients)

Single organ transplants performed between 07/01/2020 and 12/31/2022

Retransplants excluded

This center did not perform any
transplants relevant to
this table during
07/01/2020-12/31/2022

Figure C27L. Pediatric (<18) 1-month patient death HR estimate (living donor grafts)

This center did not perform any
transplants relevant to
this figure during
07/01/2020-12/31/2022

Figure C28L. Pediatric (<18) 1-month patient death HR program comparison (living donor grafts)

This center did not perform any
transplants relevant to
this figure during
07/01/2020-12/31/2022



C. Transplant Information

Table C19. Pediatric (<18) 1-year patient survival

Single organ transplants performed between 07/01/2020 and 12/31/2022
Retransplants excluded

This center did not perform any
transplants relevant to
this table during
07/01/2020-12/31/2022

Figure C29. Pediatric (<18) 1-year patient death HR estimate

This center did not perform any
transplants relevant to
this figure during
07/01/2020-12/31/2022

Figure C30. Pediatric (<18) 1-year patient death HR program comparison

This center did not perform any
transplants relevant to
this figure during
07/01/2020-12/31/2022



C. Transplant Information

Table C19D. Pediatric (<18) 1-year patient survival (deceased donor graft recipients)

Single organ transplants performed between 07/01/2020 and 12/31/2022

Retransplants excluded

This center did not perform any
transplants relevant to
this table during
07/01/2020-12/31/2022

Figure C29D. Pediatric (<18) 1-year patient death HR estimate (deceased donor grafts)

This center did not perform any
transplants relevant to
this figure during
07/01/2020-12/31/2022

Figure C30D. Pediatric (<18) 1-year patient death HR program comparison (deceased donor grafts)

This center did not perform any
transplants relevant to
this figure during
07/01/2020-12/31/2022



C. Transplant Information

Table C19L. Pediatric (<18) 1-year patient survival (living donor graft recipients)

Single organ transplants performed between 07/01/2020 and 12/31/2022

Retransplants excluded

This center did not perform any
transplants relevant to
this table during
07/01/2020-12/31/2022

Figure C29L. Pediatric (<18) 1-year patient death HR estimate (living donor grafts)

This center did not perform any
transplants relevant to
this figure during
07/01/2020-12/31/2022

Figure C30L. Pediatric (<18) 1-year patient death HR program comparison (living donor grafts)

This center did not perform any
transplants relevant to
this figure during
07/01/2020-12/31/2022



C. Transplant Information

Table C20. Pediatric (<18) 3-year patient survival

Single organ transplants performed between 01/01/2018 and 03/12/2020, and 06/13/2020 and 06/30/2020

Retransplants excluded

Follow-up ends on 3/12/2020 for recipients transplanted prior to 3/13/2020

This center did not perform any
transplants relevant to
this table during
01/01/2018-06/30/2020

Figure C31. Pediatric (<18) 3-year patient death HR estimate

This center did not perform any
transplants relevant to
this figure during
01/01/2018-06/30/2020

Figure C32. Pediatric (<18) 3-year patient death HR program comparison

This center did not perform any
transplants relevant to
this figure during
01/01/2018-06/30/2020



C. Transplant Information

Table C20D. Pediatric (<18) 3-year patient survival (deceased donor graft recipients)

Single organ transplants performed between 01/01/2018 and 03/12/2020, and 06/13/2020 and 06/30/2020

Retransplants excluded

Follow-up ends on 3/12/2020 for recipients transplanted prior to 3/13/2020

This center did not perform any
transplants relevant to
this table during
01/01/2018-06/30/2020

Figure C31D. Pediatric (<18) 3-year patient death HR estimate (deceased donor grafts)

This center did not perform any
transplants relevant to
this figure during
01/01/2018-06/30/2020

Figure C32D. Pediatric (<18) 3-year patient death HR program comparison (deceased donor grafts)

This center did not perform any
transplants relevant to
this figure during
01/01/2018-06/30/2020



C. Transplant Information

Table C20L. Pediatric (<18) 3-year patient survival (living donor graft recipients)

Single organ transplants performed between 01/01/2018 and 03/12/2020, and 06/13/2020 and 06/30/2020

Retransplants excluded

Follow-up ends on 3/12/2020 for recipients transplanted prior to 3/13/2020

This center did not perform any
transplants relevant to
this table during
01/01/2018-06/30/2020

Figure C31L. Pediatric (<18) 3-year patient death HR estimate (living donor grafts)

This center did not perform any
transplants relevant to
this figure during
01/01/2018-06/30/2020

Figure C32L. Pediatric (<18) 3-year patient death HR program comparison (living donor grafts)

This center did not perform any
transplants relevant to
this figure during
01/01/2018-06/30/2020



C. Transplant Information

Table C21. Multi-organ transplant graft survival: 07/01/2020 - 12/31/2022

Adult (18+) Transplants

Transplant Type	First-Year Outcomes					
	Transplants Performed		Kidney Graft Failures		Estimated Kidney Graft Survival	
	ARUA-TX1	USA	ARUA-TX1	USA	ARUA-TX1	USA
Kidney-Liver	7	1,926	0	217	100.0%	88.7%

Pediatric (<18) Transplants

No pediatric (<18) multi-organ transplants were performed

Table C22. Multi-organ transplant patient survival: 07/01/2020 - 12/31/2022

Adult (18+) Transplants

Transplant Type	First-Year Outcomes					
	Transplants Performed		Patient Deaths		Estimated Patient Survival	
	ARUA-TX1	USA	ARUA-TX1	USA	ARUA-TX1	USA
Kidney-Liver	7	1,926	0	174	100.0%	91.0%

Pediatric (<18) Transplants

No pediatric (<18) multi-organ transplants were performed



D. Living Donor Information

Table D1. Living donor summary: 07/01/2020 - 06/30/2023

Living Donor Follow-Up	This Center			United States		
	07/2020- 06/2021	07/2021- 06/2022	07/2022- 12/2022	07/2020- 06/2021	07/2021- 06/2022	07/2022- 12/2022
Number of Living Donors	2	3	4	5,909	5,871	2,995
6-Month Follow-Up						
Donors due for follow-up	2	3	3	4,386	5,870	2,447
Timely clinical data	2 100.0%	2 66.7%	3 100.0%	3,853 87.8%	5,032 85.7%	1,989 81.3%
Timely lab data	2 100.0%	2 66.7%	3 100.0%	3,636 82.9%	4,796 81.7%	1,938 79.2%
12-Month Follow-Up						
Donors due for follow-up	2	2		5,904	5,299	
Timely clinical data	2 100.0%	2 100.0%		4,981 84.4%	4,124 77.8%	
Timely lab data	2 100.0%	2 100.0%		4,540 76.9%	3,956 74.7%	
24-Month Follow-Up						
Donors due for follow-up	2			5,315		
Timely clinical data	2 100.0%			3,850 72.4%		
Timely lab data	2 100.0%			3,569 67.1%		

Follow-up forms due during the COVID-19 amnesty period from 3/13/2020-3/31/2021 are not included in timely clinical and lab data calculations