



User Guide

This report contains a wide range of useful information about the liver transplant program at Northwestern Memorial Hospital (ILNM). The report has three main sections:

- A. Program Summary
- B. Waiting List Information
- C. Transplant Information

The Program Summary is a one-page summary highlighting characteristics of the program, including the number of candidates on the waiting list, the number of transplants performed at the program, the number of patients being cared for by the program, and patient outcomes, including outcomes while on the waiting list (the transplant rate and the death rate while on the waiting list) and outcomes after transplant (patient and graft survival probabilities). If the program performed transplants in both adults and children, survival probabilities for adults and children (pediatrics) are provided separately. For each of the outcomes measures presented, a comparison is provided showing what would be expected at this program if it were performing as similar programs around the country perform when treating similar patients. More details regarding these outcome measures are provided in Sections B and C of the report.

The Waiting List Information section contains more detailed information on how many candidates are on the waiting list at the program, the types of candidates on the waiting list, how long candidates typically have to wait for a transplant at this program, how frequently candidates successfully receive a transplant, and how often candidates on the waiting list die before receiving a transplant.

Table B1 shows the activity on this program's waiting list during two recent 1-year periods and provides comparisons to all programs within this program's OPTN region (see <http://optn.transplant.hrsa.gov/members/regions.asp> for information on OPTN regions) and the nation as a whole. Tables B2 and B3 describe the candidates on the waiting list at this program, with comparisons to candidates waiting in the same donor service area (OPO/DSA) the OPTN region, and the nation as a whole.

Table B4 shows how many candidates were removed from the waiting list because they received a transplant. The program's transplant rate is calculated as the number of candidates who received a transplant divided by the person-years observed at the program (person-years is a combination of how many candidates were on the waiting list along with how long each candidate was followed since some candidates are not on the waiting list for the entire year). The transplant rate and comparisons to what would be expected at this program are presented in Figures B1 and B2. Figure B1 shows the transplant rate compared to what was expected at this program. The expected transplant rate is an estimate of what we would expect at this program if it were performing transplants at rates similar to other programs in the US with similar candidates on their waiting lists. The expected rate is only an estimate, and is made with a certain level of uncertainty. This uncertainty is shown in Figure B2. Figure B2 displays the ratio of the observed to the expected transplant rate. A ratio of 1 indicates that the observed transplant rate was equal to the expected transplant rate, while a ratio less than 1 indicates the observed rate was lower than expected rate and a ratio greater than 1 indicates the observed rate was higher than the expected rate. However, the level of uncertainty must be considered when interpreting these numbers. The 95% interval is also shown on Figure B2. This interval provides a range within which the true ratio of observed to expected transplant rates is likely to be. If this



User Guide

confidence interval includes (crosses) 1.0, then we cannot say that this program's observed transplant rate is different from what would be expected. The observed transplant rate at this program was 150.7 per 100 person-years. Transplant rates are also provided for adult and pediatric patients separately along with comparisons to adult and pediatric rates in the DSA, the OPTN region, and the nation. Transplant rates are also presented excluding transplants from a living donor (Table B4D and Figures B1D-B3D). Please refer to the PSR Technical Methods documentation available at <http://www.srtr.org> for more detail regarding how expected rates are calculated.

The death rate (also known as the mortality rate) for candidates on the waiting list is presented in Table B5 and Figures B4-B6. These data are presented in the same way as the transplant rate data in the previous section. The intent of these tables and figures is to describe risk of death once candidates are listed rather than while they are listed. Therefore, time at risk and deaths after removal from the waiting list for reasons other than transplant, transfer to another transplant program, or recovery (no longer needing a transplant), and before any subsequent transplant, are included. As with transplant rates, mortality rates should be interpreted carefully taking into consideration the interval displayed in Figure B5. For a complete description of how observed and expected mortality rates are calculated, please refer to the technical documentation available at <http://www.srtr.org>.

Table B6 presents information on what happens to candidates on the waiting list by three different time points after listing: 6 months, 12 months, and 18 months. The table displays percentages of candidates who have died, been removed from the waiting list, been transplanted, or been transferred or lost-to-follow-up. Tables B7 and B8 provide more detail regarding how many candidates have received a deceased donor transplant by certain time points during the first 3 years after being put on the transplant waiting list. Each row of Tables B7 and B8 presents the percent of candidates who received a deceased donor transplant by each time point. Table B9 presents data on the time it took for different percentages of patients to be transplanted for candidates added to the list between 07/01/2013 and 12/31/2018. The time it took for 5% (the 5th percentile) of patients to receive a transplant at this program was 0.1 months. If "Not Observed" is displayed in the table, then too few candidates received transplants before 06/30/2019 to calculate a particular percentile of transplant times.

Table B10 contains a summary of the offer acceptance practices of the program. The offer acceptance ratio indicates whether the program is more or less likely to accept offers than the average program. If the offer acceptance ratio is greater than 1.0, then the program tends to accept more offers than average; if the offer acceptance ratio is less than 1.0, then the program tends to accept fewer offers than average. Figure B7 shows the distribution of program offer acceptance rates as well as the offer acceptance rate for this program. Figures B8 - B12 similarly show offer acceptance rates for subsets of offers.

The Transplant Information section begins with descriptions of transplant recipients in Tables C1 and C2. Data on recipients of deceased donor transplants are presented (Tables C1D and C2D); if applicable, data on recipients of living donor transplants are presented separately (Tables C1L and C2L). Comparisons to the region and the nation as a whole are provided. A description of the deceased donors used at this program is provided in Table C3D, along with characteristics of living donors in Table C3L, if applicable. Finally, information on the transplant procedure for deceased and living donor transplants is presented in Tables C4D and C4L, respectively.



User Guide

Starting with Table C5, transplant outcomes are presented along with comparisons to what would be expected at this program and what happened in the nation as a whole. Tables C5-C10 present information on graft survival (survival of the transplanted organ), with data presented separately for adult and pediatric recipients. Patients are followed from the time of transplant until either failure of the transplanted organ or death, whichever comes first. Please refer to the technical methods for more information on these calculations (<http://www.srtr.org>).

While Tables C5-C10 present data on graft survival, Tables C11-C16 present information on patient survival. For these tables, patients are followed from the time of transplant until death, regardless of whether the transplant is functioning or the patient required another transplant to survive.

Tables C17 and C18 summarize the multiorgan transplant outcomes at this program. The summary statistics in these tables are descriptive and are not risk-adjusted for different donor and candidate characteristics.

Table D1 shows the rates of follow-up for living donors.

Additional information regarding the technical methods and the risk adjustment models used to estimate expected event rates is available on the SRTR website at <http://www.srtr.org>. We welcome and encourage feedback on these reports. Please feel free to share feedback with the SRTR at the following e-mail: srtr@srtr.org.



Table of Contents

Section	Page
User Guide	i
A. Program Summary	
Program Summary	1
B. Waiting List Information	
Waiting list activity	2
Demographic characteristics of waiting list candidates	3
Medical characteristics of waiting list candidates	4
Transplant rates	5
Deceased donor transplant rates	6
Waiting list mortality rates	7
Waiting list candidate status after listing	8
Medical urgency status 1 candidate status after listing	9
Percent of candidates with deceased donor transplants: demographic characteristics	10
Percent of candidates with deceased donor transplants: medical characteristics	11
Time to transplant for waiting list candidates	12
Offer acceptance practices	13
C. Transplant Information	
Deceased donor transplant recipient demographic characteristics	15
Living donor transplant recipient demographic characteristics	16
Deceased donor transplant recipient medical characteristics	17
Living donor transplant recipient medical characteristics	18
Deceased donor characteristics	19
Living donor characteristics	20
Deceased donor transplant characteristics	21
Living donor transplant characteristics	22
Graft survival	23
Patient survival	41
Multi-organ transplant graft survival	59
Multi-organ transplant patient survival	59
D. Living Donor Information	
Living donor follow-up summary	60



A. Program Summary

Figure A1. Waiting list and transplant activity

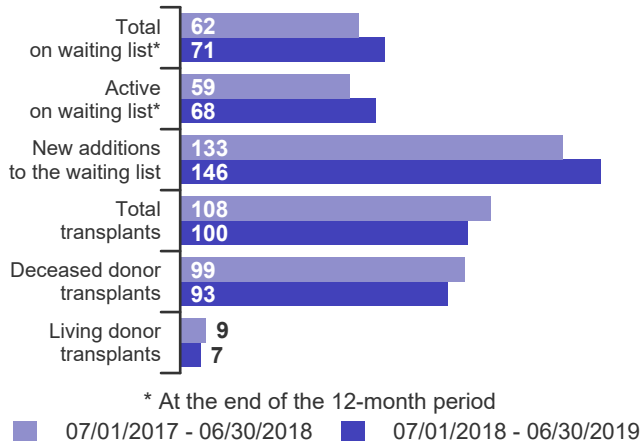


Table A1. Census of transplant recipients

Recipients	07/01/2017-06/30/2018	07/01/2018-06/30/2019
Transplanted at this center	108	100
Followed by this center*	954	967
...transplanted at this program	914	922
...transplanted elsewhere	40	45

* Recipients followed are transplant recipients for whom the center has submitted a post-transplant follow-up form for a transplant that took place before the 12-month interval for each column.

Figure A2. Transplant rates 07/01/2017 - 06/30/2019

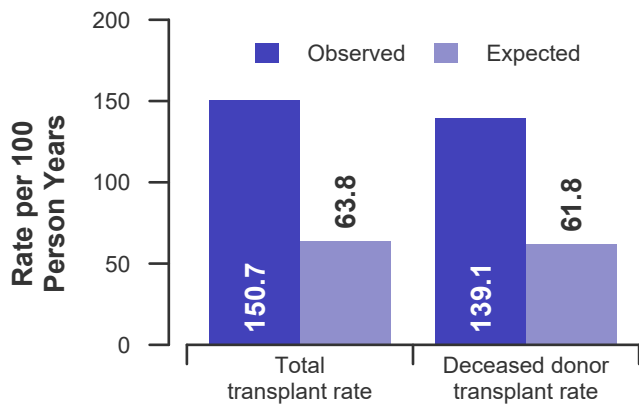


Figure A3. Waiting list mortality rates 07/01/2017 - 06/30/2019

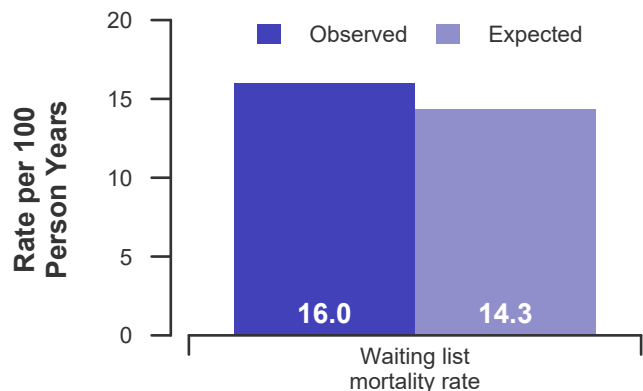


Figure A4. First-year adult graft and patient survival: 07/01/2016 - 12/31/2018

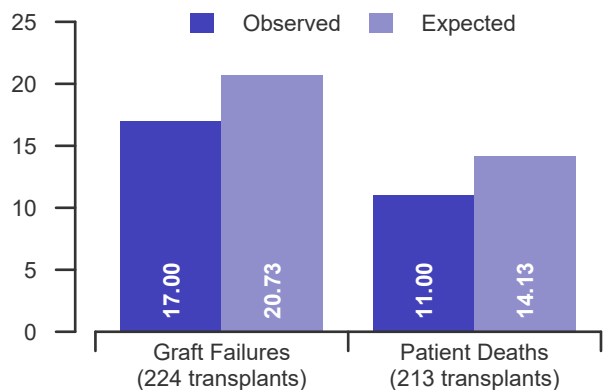
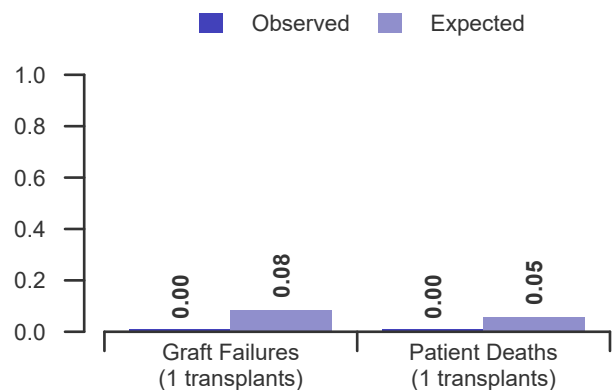


Figure A5. First-year pediatric graft and patient survival: 07/01/2016 - 12/31/2018





B. Waiting List Information

Table B1. Waiting list activity summary: 07/01/2017 - 06/30/2019

Waiting List Registrations	Counts for this center		Activity for 07/01/2018 to 06/30/2019 as percent of registrants on waiting list on 07/01/2018		
	07/01/2017-06/30/2018	07/01/2018-06/30/2019	This Center (%)	OPTN Region (%)	U.S. (%)
On waiting list at start	77	62	100.0	100.0	100.0
Additions					
New listings at this center	133	146	235.5	94.3	93.1
Removals					
Transferred to another center	3	1	1.6	0.6	1.1
Received living donor transplant*	9	7	11.3	3.6	3.4
Received deceased donor transplant*	99	93	150.0	59.6	57.6
Died	9	4	6.5	9.9	8.4
Transplanted at another center	1	1	1.6	2.7	2.8
Deteriorated	18	17	27.4	10.2	8.8
Recovered	6	7	11.3	15.1	7.1
Other reasons	3	7	11.3	10.0	9.3
On waiting list at end of period	62	71	114.5	82.7	94.6

* These patients were removed from waiting list with removal code indicating transplant; this may not equal the number of transplants performed at this center during the specified period.



B. Waiting List Information

Table B2. Demographic characteristics of waiting list candidates
Candidates registered on the waiting list between 07/01/2018 and 06/30/2019

Demographic Characteristic	New Waiting List Registrations 07/01/2018 to 06/30/2019 (%)			All Waiting List Registrations on 06/30/2019 (%)		
	This Center (N=146)	OPTN Region (N=1,032)	U.S. (N=13,078)	This Center (N=71)	OPTN Region (N=905)	U.S. (N=13,297)
All (%)	100.0	100.0	100.0	100.0	100.0	100.0
Ethnicity/Race (%)*						
White	81.5	74.4	68.9	78.9	75.5	67.6
African-American	4.8	6.2	7.7	1.4	5.6	7.5
Hispanic/Latino	13.0	11.8	16.9	16.9	12.3	17.9
Asian	0.7	4.4	4.7	2.8	4.1	5.6
Other	0.0	3.2	1.7	0.0	2.5	1.4
Unknown	0.0	0.0	0.0	0.0	0.0	0.0
Age (%)						
<2 years	0.0	1.9	2.5	0.0	1.0	1.2
2-11 years	0.0	1.6	1.7	0.0	1.0	1.2
12-17 years	0.0	1.1	1.1	0.0	1.0	1.1
18-34 years	6.8	7.5	6.2	8.5	5.5	6.1
35-49 years	11.0	19.5	17.2	15.5	20.2	18.6
50-64 years	51.4	47.9	49.7	49.3	53.5	53.4
65-69 years	20.5	16.7	16.8	22.5	15.5	15.0
70+ years	10.3	3.9	4.8	4.2	2.3	3.4
Gender (%)						
Male	67.8	62.9	61.7	73.2	62.3	60.3
Female	32.2	37.1	38.3	26.8	37.7	39.7

* Race and ethnicity are reported together as a single data element, reflecting their data collection (either race or ethnicity is required, but not both). Patients formerly coded as white and Hispanic are coded as Hispanic. Race and ethnicity sum to 100%.



B. Waiting List Information

Table B3. Medical characteristics of waiting list candidates
Candidates registered on the waiting list between 07/01/2018 and 06/30/2019

Medical Characteristic	New Waiting List Registrations 07/01/2018 to 06/30/2019 (%)			All Waiting List Registrations on 06/30/2019 (%)		
	This Center (N=146)	OPTN Region (N=1,032)	U.S. (N=13,078)	This Center (N=71)	OPTN Region (N=905)	U.S. (N=13,297)
All (%)	100.0	100.0	100.0	100.0	100.0	100.0
Blood Type (%)						
O	48.6	42.6	46.4	54.9	45.0	48.8
A	39.0	39.8	37.1	38.0	42.9	38.5
B	9.6	12.9	12.6	7.0	10.4	10.5
AB	2.7	4.7	3.9	0.0	1.8	2.2
Unknown	0.0	0.0	0.0	0.0	0.0	0.0
Previous Transplant (%)						
Yes	4.8	4.0	4.6	0.0	3.2	3.1
No	95.2	96.0	95.4	100.0	96.8	96.9
Unknown	0.0	0.0	0.0	0.0	0.0	0.0
Primary Disease (%)						
Acute Hepatic Necrosis	2.7	6.3	4.3	0.0	2.1	1.7
Non-Cholestatic Cirrhosis	78.1	63.1	66.1	81.7	68.4	71.7
Cholestatic Liver Disease/Cirrhosis	11.0	8.5	7.0	11.3	9.1	7.6
Biliary Atresia	0.7	2.2	2.3	0.0	1.8	1.7
Metabolic Diseases	4.1	2.7	2.5	2.8	1.7	1.6
Malignant Neoplasms	0.0	12.3	12.3	0.0	11.6	10.1
Other	2.7	4.7	5.3	4.2	5.4	5.3
Missing	0.7	0.1	0.2	0.0	0.0	0.1
Medical Urgency Status/MELD/PELD at Listing (%)*						
Status 1A	1.4	3.8	3.2	0.0	0.4	0.3
Status 1B	0.0	0.2	0.4	0.0	0.2	0.1
Status 2A	0.0	0.0	0.0	0.0	0.0	0.0
Status 2B	0.0	0.0	0.0	0.0	0.0	0.1
Status 3	0.0	0.0	0.0	7.0	1.1	0.6
MELD 6-10	20.5	16.9	18.4	29.6	23.1	29.0
MELD 11-14	20.5	15.8	18.8	31.0	28.2	29.1
MELD 15-20	23.3	26.6	23.4	22.5	28.7	24.9
MELD 21-30	23.3	17.2	17.7	7.0	11.2	8.9
MELD 31-40	10.3	13.9	10.9	1.4	1.4	0.7
PELD less than or equal to 10	0.0	1.4	1.8	0.0	1.1	1.7
PELD 11-14	0.0	0.3	0.2	0.0	0.2	0.1
PELD 15-20	0.0	0.4	0.6	0.0	0.0	0.2
PELD 21-30	0.0	0.4	0.3	0.0	0.2	0.2
PELD 31 or greater	0.0	0.0	0.1	0.0	0.0	0.0
Temporarily Inactive	0.7	3.3	4.1	1.4	4.1	4.1

* MELD/PELD score based on laboratory measures is shown for listings beginning 2/27/2002 unless patient is Status 1 or Temporarily Inactive. MELD/PELD scores based on exception rules are not used. Status 1 separated into 1A and 1B in August 2005.



B. Waiting List Information

Table B4. Transplant rates: 07/01/2017 - 06/30/2019

Waiting List Registrations	This Center	OPO/DSA	Region	U.S.
All Candidates				
Count on waiting list at start*	77	353	1,190	14,609
Person Years**	138.1	689.4	2,149.0	27,909.4
Removals for Transplant	208	582	1,349	16,709
Adult (18+) Candidates				
Count on waiting list at start*	77	334	1,140	14,044
Person Years**	138.1	661.7	2,076.0	26,858.2
Removals for transplant	208	545	1,265	15,524
Pediatric (<18) Candidates				
Count on waiting list at start*	--	--	--	--
Person Years**	--	--	--	--
Removals for transplant	--	--	--	--

* Counts in this table may be lower than similar counts in other waiting list tables, such as Table B1. A small percentage (~1%) of patients are found to have died or been transplanted before being removed from the waiting list, so these patients are excluded if the event occurs prior to the start of the study period. Inactive time on the waiting list is included in the calculations for this table.

** Person years are calculated as days (converted to fractional years). The number of days from July 1 or from the date of first wait listing until death, transplant, removal from the waiting list or June 30.

Figure B1. Observed and expected transplant rates: 07/01/2017 - 06/30/2019

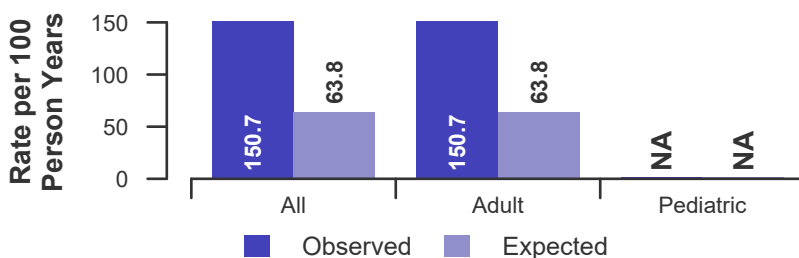


Figure B2. Transplant rate ratio estimate

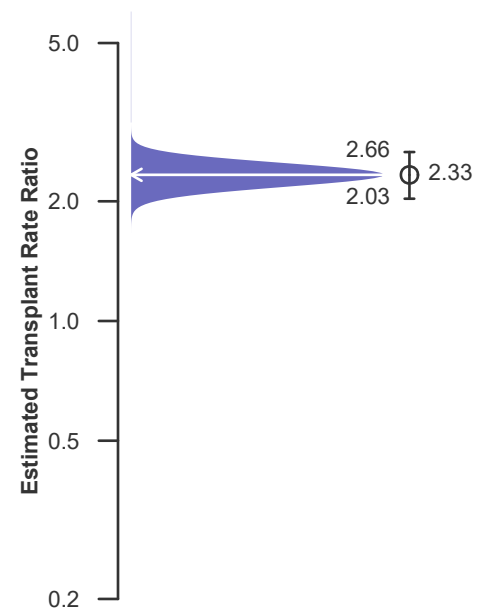
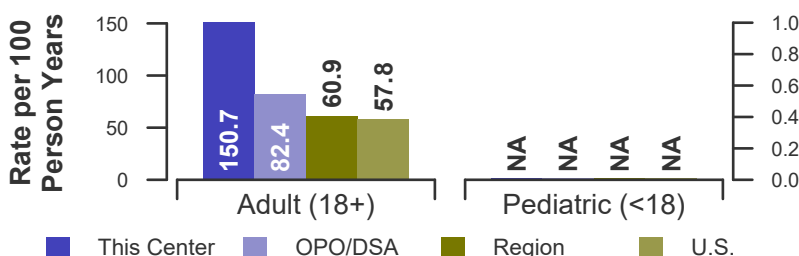


Figure B3. Observed adult (18+) and pediatric (<18) transplant rates: 07/01/2017 - 06/30/2019





B. Waiting List Information

Table B4D. Deceased donor transplant rates: 07/01/2017 - 06/30/2019

Waiting List Registrations	This Center	OPO/DSA	Region	U.S.
All Candidates				
Count on waiting list at start*	77	353	1,190	14,609
Person Years**	138.1	689.4	2,149.0	27,909.4
Removals for Transplant	192	555	1,263	15,877
Adult (18+) Candidates				
Count on waiting list at start*	77	334	1,140	14,044
Person Years**	138.1	661.7	2,076.0	26,858.2
Removals for transplant	192	520	1,183	14,819
Pediatric (<18) Candidates				
Count on waiting list at start*	--	--	--	--
Person Years**	--	--	--	--
Removals for transplant	--	--	--	--

* Counts in this table may be lower than similar counts in other waiting list tables, such as Table B1. A small percentage (~1%) of patients are found to have died or been transplanted before being removed from the waiting list, so these patients are excluded if the event occurs prior to the start of the study period. Inactive time on the waiting list is included in the calculations for this table.

** Person years are calculated as days (converted to fractional years). The number of days from July 1 or from the date of first wait listing until death, transplant, removal from the waiting list or June 30.

Figure B1D. Observed and expected deceased donor transplant rates: 07/01/2017 - 06/30/2019

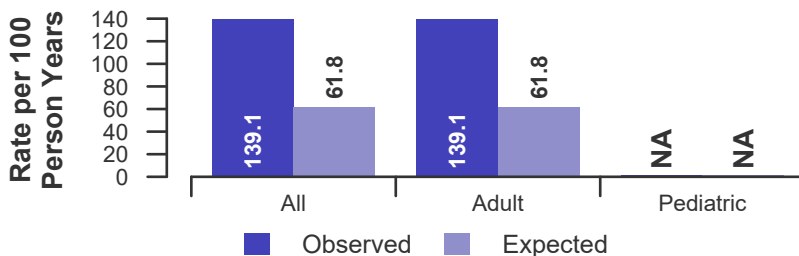


Figure B2D. Deceased donor transplant rate ratio estimate

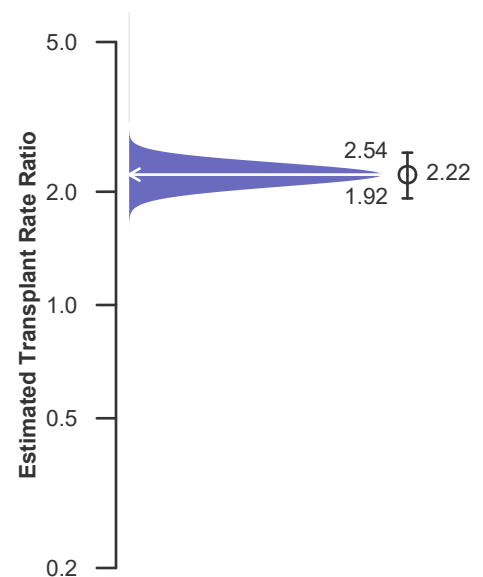
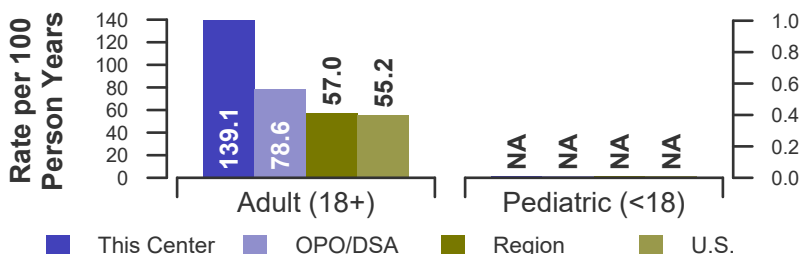


Figure B3D. Observed adult (18+) and pediatric (<18) deceased donor transplant rates: 07/01/2017 - 06/30/2019





B. Waiting List Information

Table B5. Waiting list mortality rates: 07/01/2017 - 06/30/2019

Waiting List Registrations	This Center	OPO/DSA	Region	U.S.
All Candidates				
Count on waiting list at start*	77	353	1,190	14,609
Person Years**	169.0	811.5	2,529.6	32,169.8
Number of deaths	27	110	331	3,824
Adult (18+) Candidates				
Count on waiting list at start*	77	334	1,140	14,044
Person Years**	169.0	782.6	2,448.6	31,017.3
Number of deaths	27	109	326	3,757
Pediatric (<18) Candidates				
Count on waiting list at start*	--	--	--	--
Person Years**	--	--	--	--
Number of deaths	--	--	--	--

* Counts in this table may be lower than similar counts in other waiting list tables, such as Table B1. A small percentage (~1%) of patients are found to have died or been transplanted before being removed from the waiting list, so these patients are excluded if the event occurs prior to the start of the study period. Inactive time on the waiting list is included in the calculations for this table.

** Person years are calculated as days (converted to fractional years). The number of days from July 1 or from the date of first wait listing until death, transplant, 60 days after recovery, transfer or June 30.

Figure B4. Observed and expected waiting list mortality rates: 07/01/2017 - 06/30/2019

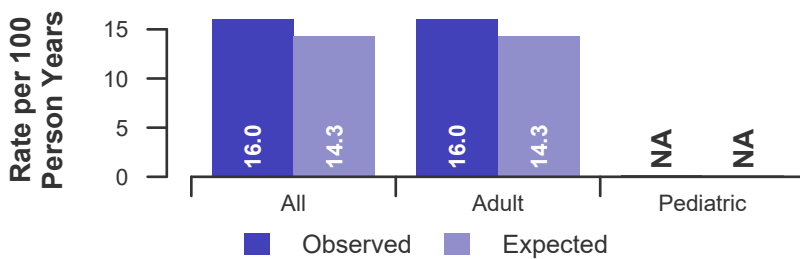


Figure B5. Waiting list mortality rate ratio estimate

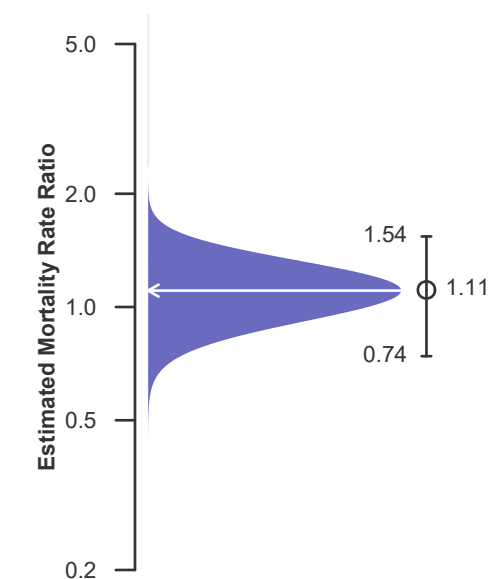
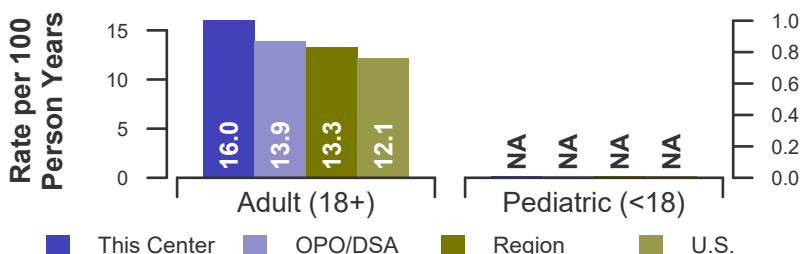


Figure B6. Observed adult (18+) and pediatric (<18) waiting list mortality rates: 07/01/2017 - 06/30/2019





B. Waiting List Information

Table B6. Waiting list candidate status after listing
Candidates registered on waiting list between 01/01/2017 and 12/31/2017

Waiting list status (survival status)	This Center (N=127)			U.S. (N=12,947)		
	Months Since Listing			Months Since Listing		
	6	12	18	6	12	18
Alive on waiting list (%)	28.3	3.9	2.4	47.6	27.7	18.4
Died on the waiting list without transplant (%)	5.5	7.1	7.1	4.7	6.2	7.0
Removed without transplant (%):						
Condition worsened (status unknown)	7.1	8.7	8.7	4.4	6.5	7.5
Condition improved (status unknown)	3.1	3.1	3.1	1.1	1.8	2.6
Refused transplant (status unknown)	0.0	0.0	0.8	0.2	0.5	0.6
Other	0.0	1.6	1.6	1.7	3.2	4.4
Transplant (living donor from waiting list only) (%):						
Functioning (alive)	5.5	5.5	3.9	1.7	2.3	1.6
Failed-Retransplanted (alive)	0.0	0.0	0.0	0.0	0.1	0.1
Failed-alive not retransplanted	0.0	0.0	0.0	0.0	0.0	0.0
Died	0.0	0.0	0.0	0.0	0.1	0.1
Status Yet Unknown**	0.0	0.0	1.6	0.0	0.1	0.8
Transplant (deceased donor) (%):						
Functioning (alive)	47.2	63.8	44.1	34.2	42.9	35.0
Failed-Retransplanted (alive)	0.0	0.0	0.0	0.3	0.4	0.6
Failed-alive not retransplanted	0.0	0.0	0.0	0.0	0.0	0.0
Died	2.4	3.1	3.9	1.8	2.9	3.7
Status Yet Unknown*	0.0	1.6	21.3	1.8	4.7	16.7
Lost or Transferred (status unknown) (%)	0.8	1.6	1.6	0.3	0.6	0.8
TOTAL (%)	100.0	100.0	100.0	100.0	100.0	100.0
Total % known died on waiting list or after transplant	7.9	10.2	11.0	6.5	9.2	10.8
Total % known died or removed as unstable	15.0	18.9	19.7	11.0	15.7	18.3
Total % removed for transplant	55.1	74.0	74.8	39.8	53.3	58.7
Total % with known functioning transplant (alive)	52.8	69.3	48.0	35.9	45.1	36.6

* Follow-up form covering specified time period not yet completed, and possibly has not become due.



B. Waiting List Information

Table B6S1. Medical urgency status 1 candidate status after listing
Candidates registered on the waiting list between 01/01/2017 and 12/31/2017

Waiting list status (survival status)	This Center (N=1)			U.S. (N=445)		
	Months Since listing			Months Since listing		
	6	12	18	6	12	18
Alive on waiting list (%)	0.0	0.0	0.0	5.2	2.7	2.0
Died on the waiting list without transplant (%)	0.0	0.0	0.0	6.3	6.3	6.3
Removed without transplant (%):						
Condition worsened (status unknown)	0.0	0.0	0.0	5.4	5.4	5.4
Condition improved (status unknown)	100.0	100.0	100.0	16.6	18.4	18.9
Refused transplant (status unknown)	0.0	0.0	0.0	0.2	0.2	0.2
Other	0.0	0.0	0.0	0.4	0.7	0.9
Transplant (living donor from waiting list only) (%):						
Functioning (alive)	0.0	0.0	0.0	0.9	0.9	0.9
Failed-Retransplanted (alive)	0.0	0.0	0.0	0.0	0.0	0.0
Failed-alive not retransplanted	0.0	0.0	0.0	0.0	0.0	0.0
Died	0.0	0.0	0.0	0.2	0.2	0.2
Status Yet Unknown**	0.0	0.0	0.0	0.0	0.0	0.0
Transplant (deceased donor) (%):						
Functioning (alive)	0.0	0.0	0.0	55.7	50.1	39.1
Failed-Retransplanted (alive)	0.0	0.0	0.0	1.3	1.3	1.6
Failed-alive not retransplanted	0.0	0.0	0.0	0.2	0.0	0.0
Died	0.0	0.0	0.0	5.6	7.0	7.0
Status Yet Unknown*	0.0	0.0	0.0	1.1	5.8	16.6
Lost or Transferred (status unknown) (%)	0.0	0.0	0.0	0.7	0.9	0.9
TOTAL (%)	100.0	100.0	100.0	100.0	100.0	100.0
Total % known died on waiting list or after transplant	0.0	0.0	0.0	12.1	13.5	13.5
Total % known died or removed as unstable	0.0	0.0	0.0	17.5	18.9	18.9
Total % removed for transplant	0.0	0.0	0.0	65.2	65.4	65.4
Total % with known functioning transplant (alive)	0.0	0.0	0.0	56.6	51.0	40.0

* Follow-up form covering specified time period not yet completed, and possibly has not become due.



B. Waiting List Information

Table B7. Percent of candidates with deceased donor transplants: demographic characteristics
Candidates registered on the waiting list between 07/01/2013 and 06/30/2016

Characteristic	N	Percent transplanted at time periods since listing								
		This Center				United States				
		30 day	1 year	2 years	3 years	N	30 day	1 year	2 years	3 years
All	351	25.4	63.8	67.5	68.4	35,521	17.7	45.2	53.0	54.9
Ethnicity/Race*										
White	249	23.3	64.3	68.3	69.1	24,197	17.4	45.9	53.3	55.1
African-American	29	37.9	62.1	62.1	65.5	3,480	21.8	50.2	57.7	59.7
Hispanic/Latino	53	22.6	62.3	66.0	66.0	5,593	16.9	40.8	49.3	51.4
Asian	18	38.9	66.7	72.2	72.2	1,731	15.6	40.0	51.8	54.1
Other	2	50.0	50.0	50.0	50.0	520	17.5	44.0	52.5	54.2
Unknown	0	--	--	--	--	0	--	--	--	--
Age										
<2 years	0	--	--	--	--	865	24.3	70.4	75.4	76.6
2-11 years	0	--	--	--	--	717	25.2	67.5	72.5	73.8
12-17 years	0	--	--	--	--	438	21.9	54.3	64.4	66.2
18-34 years	20	45.0	70.0	70.0	75.0	1,957	26.6	48.4	54.3	56.8
35-49 years	49	36.7	71.4	73.5	77.6	5,448	24.3	47.3	53.3	55.1
50-64 years	192	24.0	64.1	67.2	67.2	20,147	15.7	43.4	51.9	53.9
65-69 years	66	18.2	57.6	66.7	66.7	4,880	13.3	41.0	50.2	51.8
70+ years	24	16.7	58.3	58.3	58.3	1,069	12.3	41.4	48.6	48.7
Gender										
Male	232	21.6	63.8	67.7	68.1	22,582	17.3	46.3	54.6	56.4
Female	119	32.8	63.9	67.2	68.9	12,939	18.3	43.2	50.3	52.3

* Race and ethnicity are reported together as a single data element, reflecting their data collection (either race or ethnicity is required, but not both). Patients formerly coded as white and Hispanic are coded as Hispanic. Race and ethnicity sum to 100%.



B. Waiting List Information

Table B8. Percent of candidates with deceased donor transplants: medical characteristics
Candidates registered on the waiting list between 07/01/2013 and 06/30/2016

Characteristic	N	Percent transplanted at time periods since listing								
		This Center				United States				
		30 day	1 year	2 years	3 years	N	30 day	1 year	2 years	3 years
All	351	25.4	63.8	67.5	68.4	35,521	17.7	45.2	53.0	54.9
Blood Type										
O	172	20.9	57.0	61.0	61.6	16,547	17.4	43.4	51.3	53.3
A	134	25.4	67.9	72.4	73.9	13,081	16.2	43.2	51.7	53.3
B	34	41.2	76.5	76.5	76.5	4,572	19.7	51.4	58.4	60.5
AB	11	45.5	81.8	81.8	81.8	1,321	28.9	65.8	70.2	71.8
Previous Transplant										
Yes	23	34.8	47.8	47.8	47.8	1,990	27.4	50.1	54.8	56.2
No	328	24.7	64.9	68.9	69.8	33,531	17.1	44.9	52.9	54.8
Primary Disease										
Acute Hepatic Necrosis	16	50.0	50.0	50.0	50.0	1,378	48.1	55.7	58.1	58.9
Non-Cholestatic Cirrhosis	285	23.2	65.3	68.8	69.1	23,993	17.5	43.0	50.0	51.7
Cholestatic Liver Disease/Cirrhosis	19	26.3	63.2	68.4	78.9	2,444	15.0	45.6	53.8	57.2
Biliary Atresia	4	25.0	75.0	75.0	75.0	723	16.7	64.7	72.8	74.4
Metabolic Diseases	8	25.0	50.0	62.5	62.5	882	21.0	61.5	67.9	69.5
Malignant Neoplasms	7	0.0	42.9	57.1	57.1	4,216	8.6	46.6	61.1	63.0
Other	12	58.3	66.7	66.7	66.7	1,871	19.5	47.3	55.3	57.5
Missing	0	--	--	--	--	14	7.1	7.1	7.1	7.1
Medical Urgency Status/MELD/PELD at Listing*										
Status 1	0	--	--	--	--	0	--	--	--	--
Status 1A	13	38.5	38.5	38.5	38.5	1,168	61.0	61.7	61.7	61.7
Status 1B	0	--	--	--	--	145	49.7	83.4	83.4	83.4
Status 2A	0	--	--	--	--	0	--	--	--	--
Status 2B	0	--	--	--	--	0	--	--	--	--
Status 3	0	--	--	--	--	0	--	--	--	--
MELD 6-10	57	3.5	59.6	64.9	64.9	7,069	3.1	34.8	49.3	51.8
MELD 11-14	44	6.8	56.8	65.9	65.9	6,591	2.9	29.8	40.6	43.7
MELD 15-20	80	6.2	58.8	65.0	66.2	8,145	7.6	39.8	47.9	50.4
MELD 21-30	100	31.0	68.0	69.0	71.0	6,006	26.3	57.3	60.3	61.1
MELD 31-40	56	76.8	78.6	78.6	78.6	3,894	66.7	73.1	73.2	73.2
PELD less than or equal to 10	0	--	--	--	--	682	10.6	66.1	74.0	76.0
PELD 11-14	0	--	--	--	--	109	17.4	74.3	79.8	79.8
PELD 15-20	0	--	--	--	--	176	12.5	73.9	79.0	81.2
PELD 21-30	0	--	--	--	--	154	24.0	71.4	76.0	76.0
PELD 31 or greater	0	--	--	--	--	63	55.6	74.6	74.6	76.2
Temporarily Inactive	1	0.0	100.0	100.0	100.0	1,319	7.8	33.3	42.7	43.8

* MELD/PELD score based on laboratory measures is shown for listings beginning 2/27/2002 unless patient is Status 1 or Temporarily Inactive. MELD/PELD scores based on exception rules are not used. Status 1 separated into 1A and 1B in August 2005.



B. Waiting List Information

Table B9. Time to transplant for waiting list candidates*

Candidates registered on the waiting list between 07/01/2013 and 12/31/2018

Percentile	Center	Months to Transplant**		U.S.
		OPO/DSA	Region	
5th	0.1	0.1	0.2	0.2
10th	0.2	0.3	0.3	0.3
25th	0.7	1.5	2.5	1.9
50th (median time to transplant)	3.9	9.2	12.1	10.7
75th	28.4	Not Observed	Not Observed	Not Observed

* If cells contain "Not Observed" fewer than that percentile of patients had received a transplant. For example, the 50th percentile of time to transplant is the time when 50% of candidates have received transplants. If waiting times are long, then the 50th percentile may not be observed during the follow-up period for this table. Also, if more than 50% of candidates are removed from the list due to death or other reasons before receiving transplants, then the 50th percentile of time to transplant will not be observed.

** Censored on 06/30/2019. Calculated as the months after listing, during which the corresponding percent of all patients initially listed had received a transplant.



B. Waiting List Information

Table B10. Offer Acceptance Practices: 07/01/2018 - 06/30/2019

Offers Acceptance Characteristics	This Center	OPO/DSA	Region	U.S.
Overall				
Number of Offers	1,036	4,080	10,043	159,899
Number of Acceptances	79	252	581	7,258
Expected Acceptances	42.1	229.0	485.8	7,255.2
Offer Acceptance Ratio*	1.84	1.10	1.20	1.00
95% Credible Interval**	[1.46, 2.26]	--	--	--
PHS increased infectious risk				
Number of Offers	362	1,064	2,456	39,142
Number of Acceptances	17	55	133	2,073
Expected Acceptances	13.4	60.4	122.7	2,072.3
Offer Acceptance Ratio*	1.23	0.91	1.08	1.00
95% Credible Interval**	[0.74, 1.85]	--	--	--
DCD donor				
Number of Offers	508	1,367	2,925	37,177
Number of Acceptances	31	38	76	587
Expected Acceptances	8.7	31.7	61.0	594.5
Offer Acceptance Ratio*	3.09	1.19	1.24	0.99
95% Credible Interval**	[2.13, 4.23]	--	--	--
HCV+ donor				
Number of Offers	223	275	383	6,060
Number of Acceptances	0	3	13	412
Expected Acceptances	5.3	8.0	15.0	411.6
Offer Acceptance Ratio*	0.27	0.50	0.88	1.00
95% Credible Interval**	[0.03, 0.76]	--	--	--
Hard-to-Place Livers (Over 50 Offers)				
Number of Offers	560	1,676	5,173	87,459
Number of Acceptances	6	8	22	566
Expected Acceptances	2.4	9.6	24.9	572.4
Offer Acceptance Ratio*	1.82	0.86	0.89	0.99
95% Credible Interval**	[0.79, 3.28]	--	--	--
Donor more than 500 miles away				
Number of Offers	444	1,148	3,362	45,589
Number of Acceptances	1	9	27	705
Expected Acceptances	2.1	10.1	25.7	650.4
Offer Acceptance Ratio*	0.74	0.91	1.05	1.08
95% Credible Interval**	[0.15, 1.77]	--	--	--

* The offer acceptance ratio estimates the relative offer acceptance practice of Northwestern Memorial Hospital (ILNM) compared to the national offer acceptance practice. A ratio above one indicates the program is more likely to accept an offer compared to national offer acceptance practices (e.g., an offer acceptance ratio of 1.25 indicates a 25% more likely to accept an offer), while a ratio below one indicates the program is less likely to accept an offer compared to national offer acceptance practices (e.g., an offer acceptance ratio of 0.75 indicates a 25% less likely to accept an offer).

** As an example, the 95% Credible Interval for the overall offer acceptance ratio, [1.46, 2.26], indicates the location of ILNM's true offer acceptance ratio with 95% probability. The best estimate is 84% more likely to accept an offer compared to national acceptance behavior, but ILNM's performance could plausibly range from 46% higher acceptance up to 126% higher acceptance.



B. Waiting List Information

Figure B7. Offer acceptance: Overall

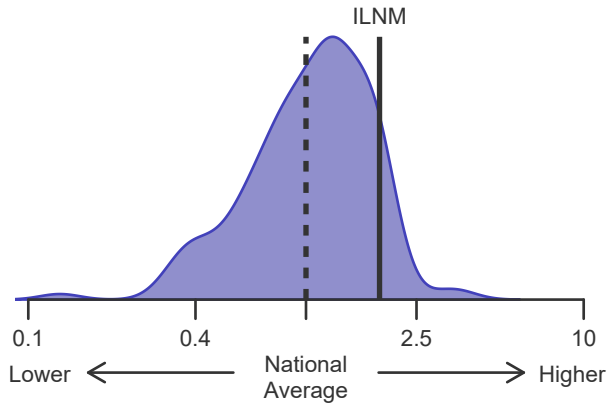


Figure B8. Offer acceptance: PHS increased infectious risk

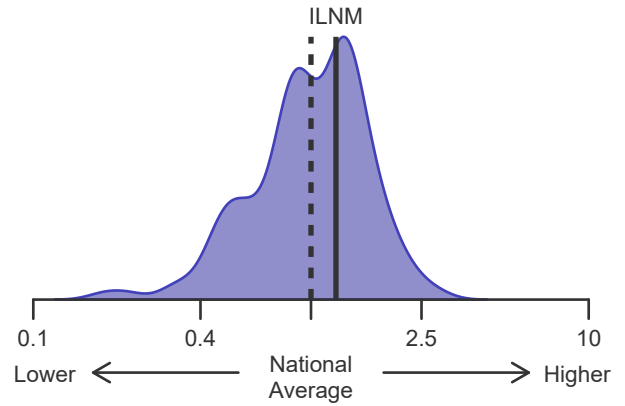


Figure B9. Offer acceptance: DCD Donor

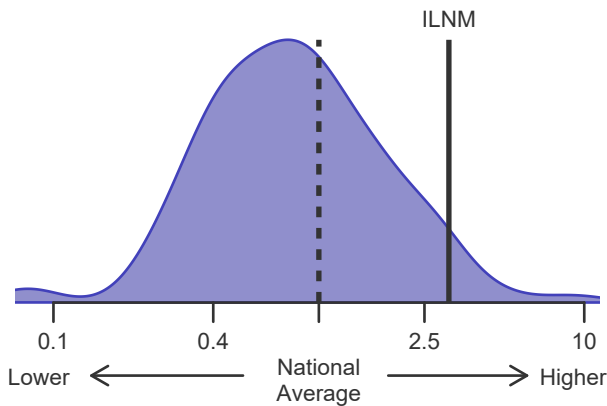


Figure B10. Offer acceptance: HCV+ Donor

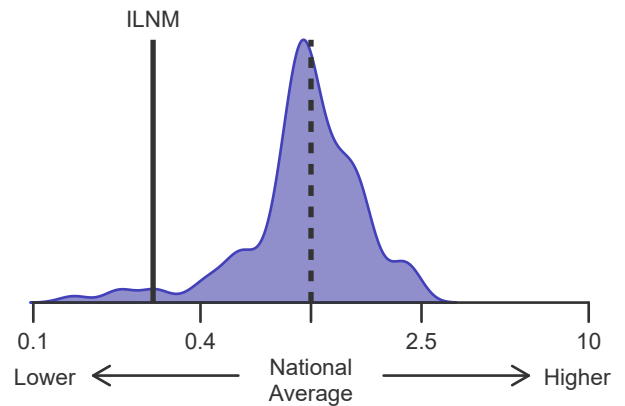


Figure B11. Offer acceptance: Offer number > 50

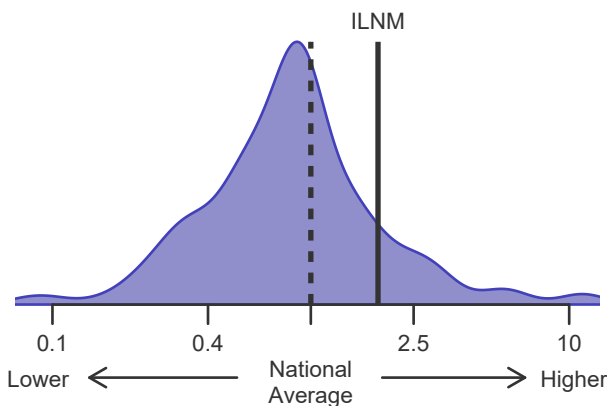
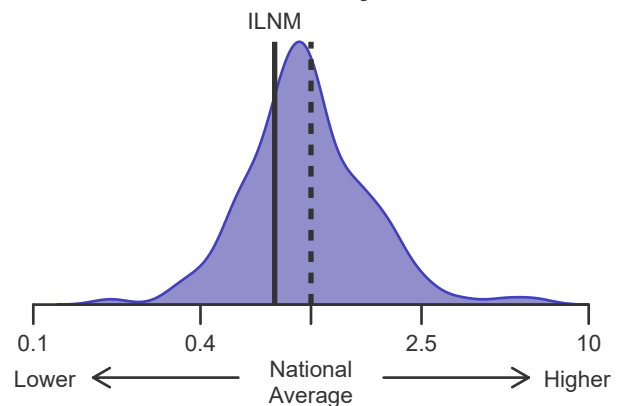


Figure B12. Offer acceptance: Donor more than 500 miles away





C. Transplant Information

Table C1D. Deceased donor transplant recipient demographic characteristics
Patients transplanted between 07/01/2018 and 06/30/2019

Characteristic	Percentage in each category		
	Center (N=93)	Region (N=652)	U.S. (N=8,093)
Ethnicity/Race (%)*			
White	75.3	72.4	68.2
African-American	6.5	7.7	8.5
Hispanic/Latino	15.1	12.9	17.0
Asian	3.2	4.4	4.8
Other	0.0	2.6	1.6
Unknown	0.0	0.0	0.0
Age (%)			
<2 years	0.0	2.3	2.5
2-11 years	0.0	1.8	2.3
12-17	0.0	0.6	1.0
18-34	2.2	6.7	6.6
35-49 years	11.8	18.7	16.7
50-64 years	47.3	48.5	49.4
65-69 years	22.6	15.5	16.6
70+ years	16.1	5.8	5.0
Gender (%)			
Male	62.4	66.3	63.4
Female	37.6	33.7	36.6

* Race and ethnicity are reported together as a single data element, reflecting their data collection (either race or ethnicity is required, but not both). Patients formerly coded as white and Hispanic are coded as Hispanic. Race and ethnicity sum to 100%.



C. Transplant Information

Table C1L. Living donor transplant recipient demographic characteristics
Patients transplanted between 07/01/2018 and 06/30/2019

Characteristic	Percentage in each category		
	Center (N=7)	Region (N=39)	U.S. (N=473)
Ethnicity/Race (%)*			
White	85.7	89.7	78.2
African-American	0.0	0.0	3.6
Hispanic/Latino	14.3	7.7	12.9
Asian	0.0	0.0	3.2
Other	0.0	2.6	2.1
Unknown	0.0	0.0	0.0
Age (%)			
<2 years	0.0	0.0	8.7
2-11 years	0.0	2.6	4.9
12-17	0.0	0.0	0.6
18-34	28.6	7.7	8.2
35-49 years	0.0	38.5	18.8
50-64 years	28.6	25.6	38.9
65-69 years	28.6	20.5	16.1
70+ years	14.3	5.1	3.8
Gender (%)			
Male	14.3	46.2	53.9
Female	85.7	53.8	46.1

* Race and ethnicity are reported together as a single data element, reflecting their data collection (either race or ethnicity is required, but not both). Patients formerly coded as white and Hispanic are coded as Hispanic. Race and ethnicity sum to 100%.



C. Transplant Information

Table C2D. Deceased donor transplant recipient medical characteristics
Patients transplanted between 07/01/2018 and 06/30/2019

Characteristic	Percentage in each category		
	Center (N=93)	Region (N=652)	U.S. (N=8,093)
Blood Type (%)			
O	52.7	42.0	44.8
A	32.3	33.4	35.8
B	9.7	17.3	14.3
AB	5.4	7.2	5.0
Previous Transplant (%)			
Yes	7.5	5.7	5.0
No	92.5	94.3	95.0
Body Mass Index (%)			
0-20	6.5	8.0	11.9
21-25	31.2	28.1	26.8
26-30	30.1	31.6	30.7
31-35	15.1	17.0	17.8
36-40	12.9	8.4	8.6
41+	4.3	4.8	3.2
Unknown	0.0	2.1	1.0
Primary Disease (%)			
Acute Hepatic Necrosis	3.2	6.1	4.7
Non-Cholestatic Cirrhosis	80.6	61.0	62.3
Cholestatic Liver Disease/Cirrhosis	6.5	7.8	7.1
Biliary Atresia	2.2	2.6	2.4
Metabolic Diseases	4.3	4.1	3.2
Malignant Neoplasms	2.2	15.5	16.5
Other	0.0	2.6	3.7
Missing	1.1	0.2	0.1
Medical Urgency Statust/MELD/PELD at Transplant (%)*			
Status 1A	1.1	3.8	3.4
Status 1B	0.0	0.8	1.5
MELD 6-10	10.8	13.8	14.4
MELD 11-14	8.6	10.7	13.1
MELD 15-20	28.0	20.6	20.2
MELD 21-30	31.2	22.5	23.0
MELD 31-40	20.4	25.2	21.4
PELD less than or equal to 10	0.0	1.4	1.4
PELD 11-14	0.0	0.5	0.4
PELD 15-20	0.0	0.5	0.6
PELD 21-30	0.0	0.3	0.3
PELD 31 or greater	0.0	0.0	0.2
Temporarily Inactive	0.0	0.0	0.0
Recipient Medical Condition at Transplant (%)			
Not Hospitalized	77.4	62.3	65.9
Hospitalized	17.2	19.9	18.5
ICU	5.4	17.8	15.5
Unknown	0.0	0.0	0.2

* MELD/PELD score based on laboratory measures at the time of transplant is shown unless recipient is Status 1 or Temporarily Inactive. MELD/PELD scores based on exception rules are not used. Status 1 separated into 1A and 1B in August 2005



C. Transplant Information

Table C2L. Living donor transplant recipient medical characteristics
 Patients transplanted between 07/01/2018 and 06/30/2019

Characteristic	Percentage in each category		
	Center (N=7)	Region (N=39)	U.S. (N=473)
Blood Type (%)			
O	85.7	56.4	49.5
A	14.3	35.9	37.2
B	0.0	7.7	11.4
AB	0.0	0.0	1.9
Previous Transplant (%)			
Yes	0.0	0.0	1.1
No	100.0	100.0	98.9
Body Mass Index (%)			
0-20	0.0	15.4	22.4
21-25	14.3	38.5	28.5
26-30	71.4	30.8	29.4
31-35	14.3	15.4	12.5
36-40	0.0	0.0	4.9
41+	0.0	0.0	1.3
Unknown	0.0	0.0	1.1
Primary Disease (%)			
Acute Hepatic Necrosis	0.0	2.6	2.1
Non-Cholestatic Cirrhosis	28.6	33.3	46.9
Cholestatic Liver Disease/Cirrhosis	71.4	30.8	21.6
Biliary Atresia	0.0	2.6	9.9
Metabolic Diseases	0.0	2.6	4.0
Malignant Neoplasms	0.0	25.6	12.9
Other	0.0	2.6	2.5
Missing	0.0	0.0	0.0
Medical Urgency Statust/MELD/PELD at Transplant (%)*			
Status 1A	0.0	0.0	0.4
Status 1B	0.0	0.0	1.7
MELD 6-10	57.1	38.5	19.2
MELD 11-14	28.6	17.9	22.2
MELD 15-20	14.3	25.6	26.4
MELD 21-30	0.0	12.8	15.4
MELD 31-40	0.0	0.0	1.3
PELD less than or equal to 10	0.0	0.0	4.4
PELD 11-14	0.0	0.0	1.5
PELD 15-20	0.0	0.0	2.7
PELD 21-30	0.0	0.0	1.5
PELD 31 or greater	0.0	2.6	1.3
Temporarily Inactive	0.0	2.6	1.9
Recipient Medical Condition at Transplant (%)			
Not Hospitalized	85.7	76.9	86.0
Hospitalized	14.3	17.9	10.4
ICU	0.0	5.1	3.2
Unknown	0.0	0.0	0.4

* MELD/PELD score based on laboratory measures at the time of transplant is shown unless recipient is Status 1 or Temporarily Inactive. MELD/PELD scores based on exception rules are not used. Status 1 separated into 1A and 1B in August 2005



C. Transplant Information

Table C3D. Deceased donor characteristics
Transplants performed between 07/01/2018 and 06/30/2019

Donor Characteristic	Percentage in each category		
	Center (N=93)	Region (N=652)	U.S. (N=8,093)
Cause of Death (%)			
Deceased: Stroke	24.7	30.7	27.5
Deceased: MVA	8.6	12.0	13.2
Deceased: Other	66.7	57.4	59.3
Ethnicity/Race (%)*			
White	58.1	65.5	63.2
African-American	23.7	21.9	18.2
Hispanic/Latino	14.0	10.0	14.8
Asian	3.2	2.0	2.6
Other	1.1	0.6	1.2
Not Reported	0.0	0.0	0.0
Age (%)			
<2 years	0.0	1.4	1.4
2-11 years	3.2	2.6	2.5
12-17	3.2	4.0	4.6
18-34	33.3	30.5	32.1
35-49 years	22.6	24.1	27.5
50-64 years	26.9	25.9	24.1
65-69 years	6.5	4.4	4.0
70+ years	4.3	7.1	3.7
Gender (%)			
Male	57.0	60.3	59.8
Female	43.0	39.7	40.2
Blood Type (%)			
O	49.5	43.4	48.4
A	35.5	35.4	36.2
B	10.8	16.3	12.4
AB	4.3	4.9	3.0
Unknown	0.0	0.0	0.0

* Race and ethnicity are reported together as a single data element, reflecting their data collection (either race or ethnicity is required, but not both). Patients formerly coded as white and Hispanic are coded as Hispanic. Race and ethnicity sum to 100%.



C. Transplant Information

Table C3L. Living donor characteristics
Transplants performed between 07/01/2018 and 06/30/2019

Donor Characteristic	Percentage in each category		
	Center (N=7)	Region (N=39)	U.S. (N=473)
Ethnicity/Race (%)*			
White	85.7	89.7	78.6
African-American	0.0	2.6	4.0
Hispanic/Latino	14.3	5.1	10.6
Asian	0.0	0.0	3.6
Other	0.0	2.6	3.2
Not Reported	0.0	0.0	0.0
Age (%)			
0-11 years	0.0	0.0	0.2
12-17	0.0	0.0	0.2
18-34	42.9	35.9	44.2
35-49 years	42.9	51.3	40.4
50-64 years	14.3	12.8	14.6
65-69 years	0.0	0.0	0.2
70+ years	0.0	0.0	0.2
Gender (%)			
Male	71.4	59.0	46.9
Female	28.6	41.0	53.1
Blood Type (%)			
O	71.4	66.7	66.8
A	28.6	28.2	25.4
B	0.0	5.1	7.8
AB	0.0	0.0	0.0
Unknown	0.0	0.0	0.0

* Race and ethnicity are reported together as a single data element, reflecting their data collection (either race or ethnicity is required, but not both). Patients formerly coded as white and Hispanic are coded as Hispanic. Race and ethnicity sum to 100%.



C. Transplant Information

Table C4D. Deceased donor transplant characteristics
Transplants performed between 07/01/2018 and 06/30/2019

Transplant Characteristic	Percentage in each category		
	Center (N=93)	Region (N=652)	U.S. (N=8,093)
Cold Ischemic Time (Hours): Local (%)			
Deceased: 0-5 hr	60.5	68.1	65.2
Deceased: 6-10 hr	38.2	30.5	32.6
Deceased: 11-15 hr	1.3	1.3	1.2
Deceased: 16-20 hr	0.0	0.0	0.1
Deceased: 21+ hr	0.0	0.0	0.1
Not Reported	0.0	0.0	0.8
Cold Ischemic Time (Hours): Shared (%)			
Deceased: 0-5 hr	47.1	50.8	43.2
Deceased: 6-10 hr	47.1	45.2	53.2
Deceased: 11-15 hr	5.9	4.1	2.9
Deceased: 16-20 hr	0.0	0.0	0.0
Deceased: 21+ hr	0.0	0.0	0.1
Not Reported	0.0	0.0	0.6
Procedure Type (%)			
Liver alone	86.0	90.0	90.2
Liver and another organ	14.0	10.0	9.8
Sharing (%)			
Local	81.7	69.8	62.7
Shared	18.3	30.2	37.3
Median Time in Hospital After Transplant*	9.0 Days	11.0 Days	10.0 Days

* Multiple organ transplants are excluded from this statistic.



C. Transplant Information

Table C4L. Living donor transplant characteristics
Transplants performed between 07/01/2018 and 06/30/2019

Transplant Characteristic	Percentage in each category		
	Center (N=7)	Region (N=39)	U.S. (N=473)
Relation with Donor (%)			
Related	57.1	43.6	49.9
Unrelated	42.9	56.4	50.1
Not Reported	0.0	0.0	0.0
Procedure Type (%)			
Liver alone	100.0	100.0	99.8
Liver and another organ	0.0	0.0	0.2
Median Time in Hospital After Transplant*	6.0 Days	9.0 Days	11.0 Days

* Multiple organ transplants are excluded from this statistic.



C. Transplant Information

Table C5. Adult (18+) 1-month survival with a functioning graft
Single organ transplants performed between 07/01/2016 and 12/31/2018
Deaths and retransplants are considered graft failures

	ILNM	U.S.
Number of transplants evaluated	224	16,923
Estimated probability of surviving with a functioning graft at 1 month (unadjusted for patient and donor characteristics)	96.43%	96.31%
Expected probability of surviving with a functioning graft at 1 month (adjusted for patient and donor characteristics)	95.98%	--
Number of observed graft failures (including deaths) during the first month after transplant	8	624
Number of expected graft failures (including deaths) during the first month after transplant	9.06	--
Estimated hazard ratio*	0.90	--
95% credible interval for the hazard ratio**	[0.43, 1.54]	--

* The hazard ratio provides an estimate of how Northwestern Memorial Hospital (ILNM)'s results compare with what was expected based on modeling the transplant outcomes from all U.S. programs. A ratio above 1 indicates higher than expected graft failure rates (e.g., a hazard ratio of 1.5 would indicate 50% higher risk), and a ratio below 1 indicates lower than expected graft failure rates (e.g., a hazard ratio of 0.75 would indicate 25% lower risk). If ILNM's graft failure rate were precisely the expected rate, the estimated hazard ratio would be 1.0.

** The 95% credible interval, [0.43, 1.54], indicates the location of ILNM's true hazard ratio with 95% probability. The best estimate is 10% lower risk of graft failure compared to an average program, but ILNM's performance could plausibly range from 57% reduced risk up to 54% increased risk.

Figure C1. Adult (18+) 1-month graft failure HR estimate

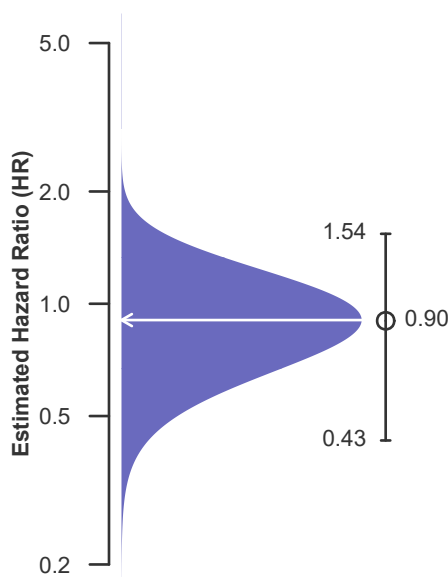
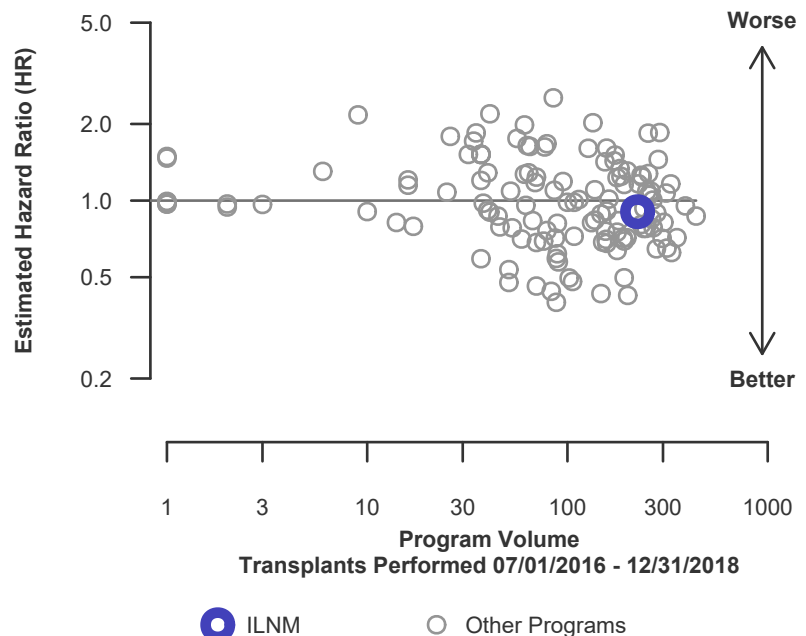


Figure C2. Adult (18+) 1-month graft failure HR program comparison





C. Transplant Information

Table C5D. Adult (18+) 1-month survival with a functioning deceased donor graft
Single organ transplants performed between 07/01/2016 and 12/31/2018
Deaths and retransplants are considered graft failures

	ILNM	U.S.
Number of transplants evaluated	202	16,151
Estimated probability of surviving with a functioning graft at 1 month (unadjusted for patient and donor characteristics)	96.04%	96.29%
Expected probability of surviving with a functioning graft at 1 month (adjusted for patient and donor characteristics)	95.89%	--
Number of observed graft failures (including deaths) during the first month after transplant	8	599
Number of expected graft failures (including deaths) during the first month after transplant	8.34	--
Estimated hazard ratio*	0.97	--
95% credible interval for the hazard ratio**	[0.46, 1.65]	--

* The hazard ratio provides an estimate of how Northwestern Memorial Hospital (ILNM)'s results compare with what was expected based on modeling the transplant outcomes from all U.S. programs. A ratio above 1 indicates higher than expected graft failure rates (e.g., a hazard ratio of 1.5 would indicate 50% higher risk), and a ratio below 1 indicates lower than expected graft failure rates (e.g., a hazard ratio of 0.75 would indicate 25% lower risk). If ILNM's graft failure rate were precisely the expected rate, the estimated hazard ratio would be 1.0.

** The 95% credible interval, [0.46, 1.65], indicates the location of ILNM's true hazard ratio with 95% probability. The best estimate is 3% lower risk of graft failure compared to an average program, but ILNM's performance could plausibly range from 54% reduced risk up to 65% increased risk.

Figure C1D. Adult (18+) 1-month deceased donor graft failure HR estimate

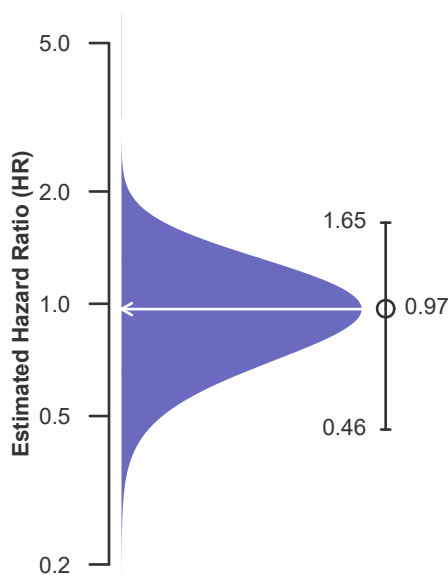
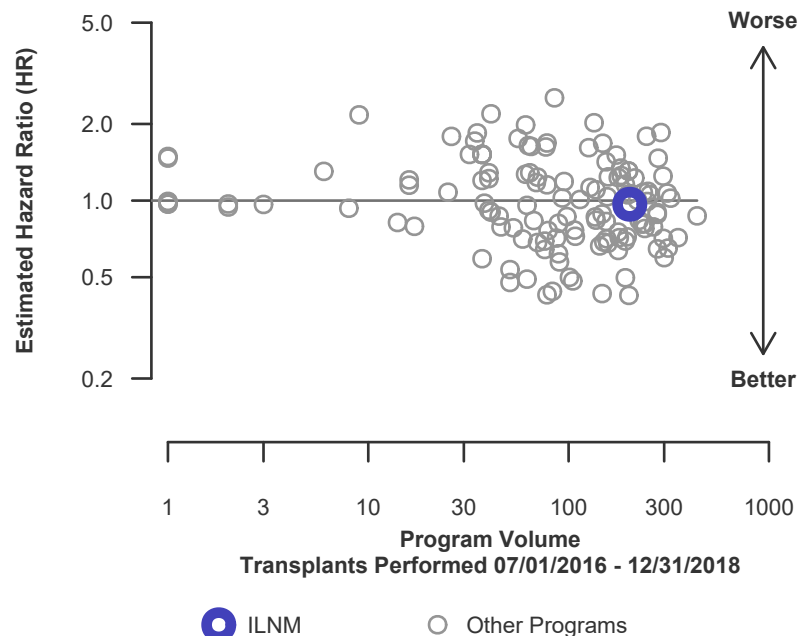


Figure C2D. Adult (18+) 1-month deceased donor graft failure HR program comparison





C. Transplant Information

Table C5L. Adult (18+) 1-month survival with a functioning living donor graft
Single organ transplants performed between 07/01/2016 and 12/31/2018
Deaths and retransplants are considered graft failures

	ILNM	U.S.
Number of transplants evaluated	22	772
Estimated probability of surviving with a functioning graft at 1 month (unadjusted for patient and donor characteristics)	100.00%	96.76%
Expected probability of surviving with a functioning graft at 1 month (adjusted for patient and donor characteristics)	96.77%	--
Number of observed graft failures (including deaths) during the first month after transplant	0	25
Number of expected graft failures (including deaths) during the first month after transplant	0.72	--
Estimated hazard ratio*	0.73	--
95% credible interval for the hazard ratio**	[0.09, 2.05]	--

* The hazard ratio provides an estimate of how Northwestern Memorial Hospital (ILNM)'s results compare with what was expected based on modeling the transplant outcomes from all U.S. programs. A ratio above 1 indicates higher than expected graft failure rates (e.g., a hazard ratio of 1.5 would indicate 50% higher risk), and a ratio below 1 indicates lower than expected graft failure rates (e.g., a hazard ratio of 0.75 would indicate 25% lower risk). If ILNM's graft failure rate were precisely the expected rate, the estimated hazard ratio would be 1.0.

** The 95% credible interval, [0.09, 2.05], indicates the location of ILNM's true hazard ratio with 95% probability. The best estimate is 27% lower risk of graft failure compared to an average program, but ILNM's performance could plausibly range from 91% reduced risk up to 105% increased risk.

Figure C1L. Adult (18+) 1-month living donor graft failure HR estimate

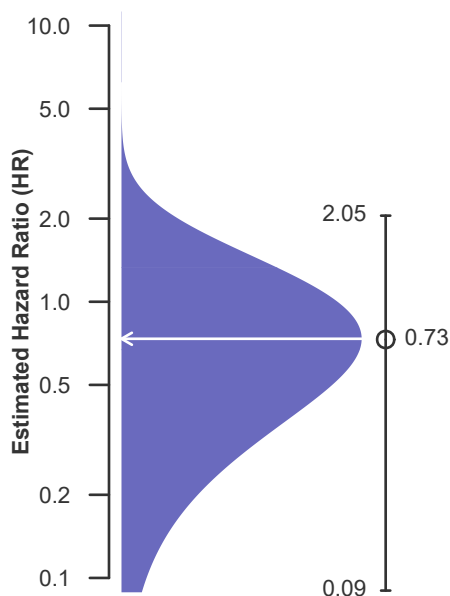
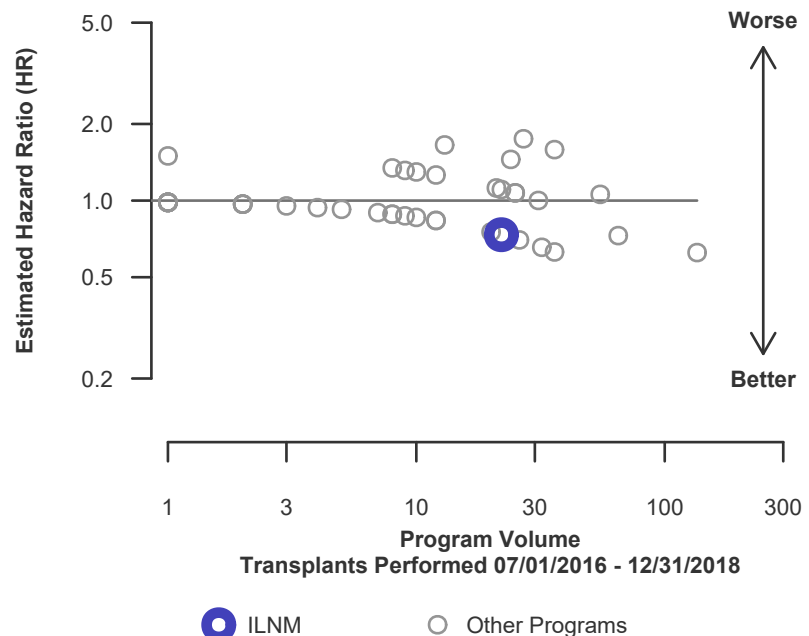


Figure C2L. Adult (18+) 1-month living donor graft failure HR program comparison





C. Transplant Information

Table C6. Adult (18+) 1-year survival with a functioning graft
Single organ transplants performed between 07/01/2016 and 12/31/2018
Deaths and retransplants are considered graft failures

	ILNM	U.S.
Number of transplants evaluated	224	16,923
Estimated probability of surviving with a functioning graft at 1 year (unadjusted for patient and donor characteristics)	92.03%	91.36%
Expected probability of surviving with a functioning graft at 1 year (adjusted for patient and donor characteristics)	90.33%	--
Number of observed graft failures (including deaths) during the first year after transplant	17	1,391
Number of expected graft failures (including deaths) during the first year after transplant	20.73	--
Estimated hazard ratio*	0.84	--
95% credible interval for the hazard ratio**	[0.50, 1.25]	--

* The hazard ratio provides an estimate of how Northwestern Memorial Hospital (ILNM)'s results compare with what was expected based on modeling the transplant outcomes from all U.S. programs. A ratio above 1 indicates higher than expected graft failure rates (e.g., a hazard ratio of 1.5 would indicate 50% higher risk), and a ratio below 1 indicates lower than expected graft failure rates (e.g., a hazard ratio of 0.75 would indicate 25% lower risk). If ILNM's graft failure rate were precisely the expected rate, the estimated hazard ratio would be 1.0.

** The 95% credible interval, [0.50, 1.25], indicates the location of ILNM's true hazard ratio with 95% probability. The best estimate is 16% lower risk of graft failure compared to an average program, but ILNM's performance could plausibly range from 50% reduced risk up to 25% increased risk.

Figure C3. Adult (18+) 1-year graft failure HR estimate

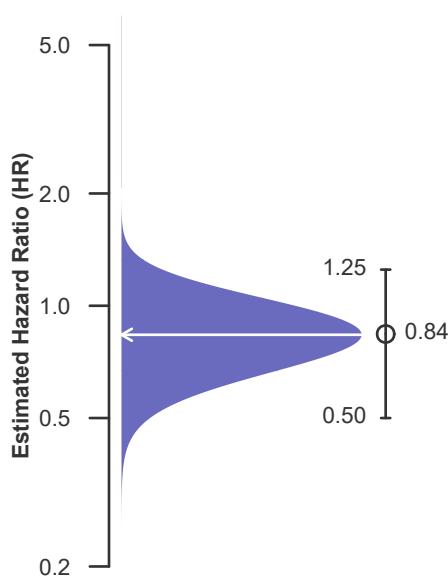
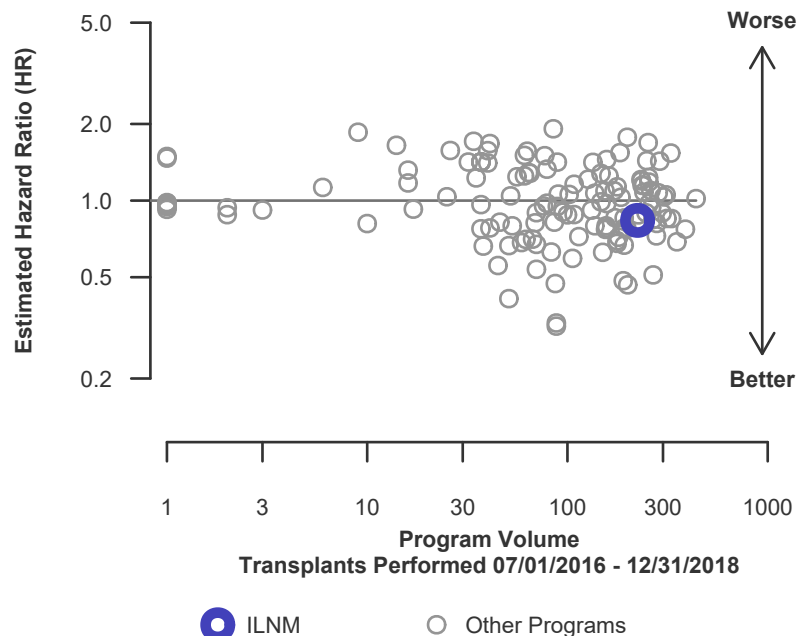


Figure C4. Adult (18+) 1-year graft failure HR program comparison





C. Transplant Information

Table C6D. Adult (18+) 1-year survival with a functioning deceased donor graft
Single organ transplants performed between 07/01/2016 and 12/31/2018
Deaths and retransplants are considered graft failures

	ILNM	U.S.
Number of transplants evaluated	202	16,151
Estimated probability of surviving with a functioning graft at 1 year (unadjusted for patient and donor characteristics)	91.15%	91.29%
Expected probability of surviving with a functioning graft at 1 year (adjusted for patient and donor characteristics)	90.06%	--
Number of observed graft failures (including deaths) during the first year after transplant	17	1,338
Number of expected graft failures (including deaths) during the first year after transplant	19.13	--
Estimated hazard ratio*	0.90	--
95% credible interval for the hazard ratio**	[0.54, 1.35]	--

* The hazard ratio provides an estimate of how Northwestern Memorial Hospital (ILNM)'s results compare with what was expected based on modeling the transplant outcomes from all U.S. programs. A ratio above 1 indicates higher than expected graft failure rates (e.g., a hazard ratio of 1.5 would indicate 50% higher risk), and a ratio below 1 indicates lower than expected graft failure rates (e.g., a hazard ratio of 0.75 would indicate 25% lower risk). If ILNM's graft failure rate were precisely the expected rate, the estimated hazard ratio would be 1.0.

** The 95% credible interval, [0.54, 1.35], indicates the location of ILNM's true hazard ratio with 95% probability. The best estimate is 10% lower risk of graft failure compared to an average program, but ILNM's performance could plausibly range from 46% reduced risk up to 35% increased risk.

Figure C3D. Adult (18+) 1-year deceased donor graft failure HR estimate

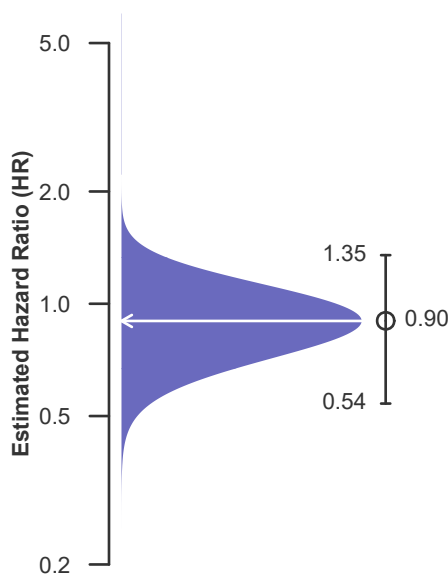
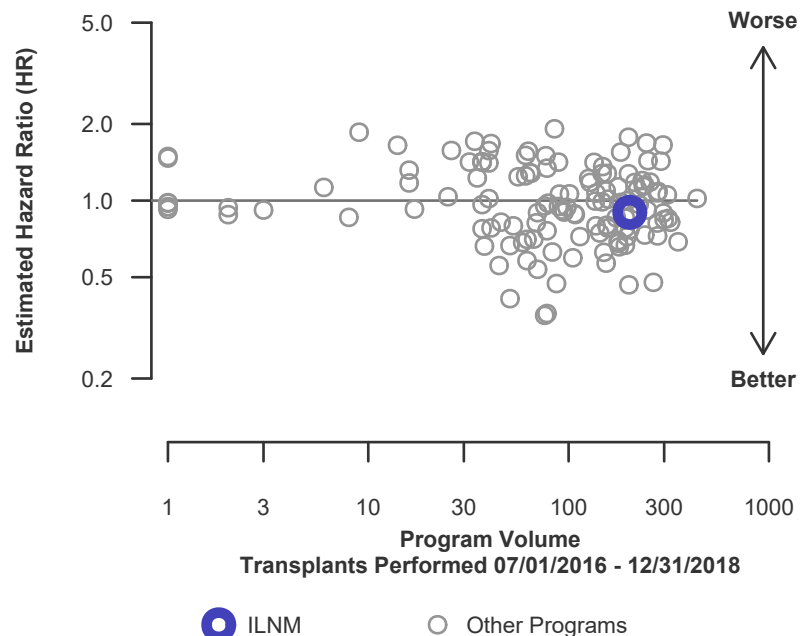


Figure C4D. Adult (18+) 1-year deceased donor graft failure HR program comparison





C. Transplant Information

Table C6L. Adult (18+) 1-year survival with a functioning living donor graft
Single organ transplants performed between 07/01/2016 and 12/31/2018
Deaths and retransplants are considered graft failures

	ILNM	U.S.
Number of transplants evaluated	22	772
Estimated probability of surviving with a functioning graft at 1 year (unadjusted for patient and donor characteristics)	100.00%	92.80%
Expected probability of surviving with a functioning graft at 1 year (adjusted for patient and donor characteristics)	92.80%	--
Number of observed graft failures (including deaths) during the first year after transplant	0	53
Number of expected graft failures (including deaths) during the first year after transplant	1.60	--
Estimated hazard ratio*	0.56	--
95% credible interval for the hazard ratio**	[0.07, 1.55]	--

* The hazard ratio provides an estimate of how Northwestern Memorial Hospital (ILNM)'s results compare with what was expected based on modeling the transplant outcomes from all U.S. programs. A ratio above 1 indicates higher than expected graft failure rates (e.g., a hazard ratio of 1.5 would indicate 50% higher risk), and a ratio below 1 indicates lower than expected graft failure rates (e.g., a hazard ratio of 0.75 would indicate 25% lower risk). If ILNM's graft failure rate were precisely the expected rate, the estimated hazard ratio would be 1.0.

** The 95% credible interval, [0.07, 1.55], indicates the location of ILNM's true hazard ratio with 95% probability. The best estimate is 44% lower risk of graft failure compared to an average program, but ILNM's performance could plausibly range from 93% reduced risk up to 55% increased risk.

Figure C3L. Adult (18+) 1-year living donor graft failure HR estimate

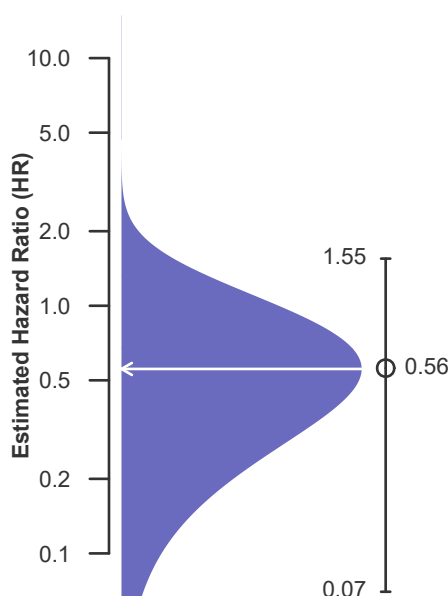
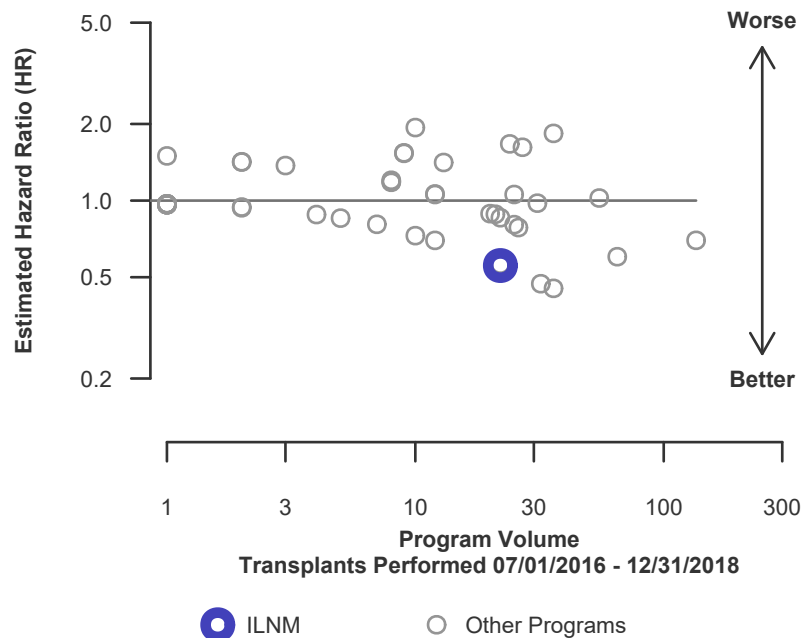


Figure C4L. Adult (18+) 1-year living donor graft failure HR program comparison





C. Transplant Information

Table C7. Adult (18+) 3-year survival with a functioning graft
Single organ transplants performed between 01/01/2014 and 06/30/2016
Deaths and retransplants are considered graft failures

	ILNM	U.S.
Number of transplants evaluated	208	14,626
Estimated probability of surviving with a functioning graft at 3 years (unadjusted for patient and donor characteristics)	83.17%	84.16%
Expected probability of surviving with a functioning graft at 3 years (adjusted for patient and donor characteristics)	83.57%	--
Number of observed graft failures (including deaths) during the first 3 years after transplant	35	2,317
Number of expected graft failures (including deaths) during the first 3 years after transplant	33.80	--
Estimated hazard ratio*	1.03	--
95% credible interval for the hazard ratio**	[0.73, 1.39]	--

* The hazard ratio provides an estimate of how Northwestern Memorial Hospital (ILNM)'s results compare with what was expected based on modeling the transplant outcomes from all U.S. programs. A ratio above 1 indicates higher than expected graft failure rates (e.g., a hazard ratio of 1.5 would indicate 50% higher risk), and a ratio below 1 indicates lower than expected graft failure rates (e.g., a hazard ratio of 0.75 would indicate 25% lower risk). If ILNM's graft failure rate were precisely the expected rate, the estimated hazard ratio would be 1.0.

** The 95% credible interval, [0.73, 1.39], indicates the location of ILNM's true hazard ratio with 95% probability. The best estimate is 3% higher risk of graft failure compared to an average program, but ILNM's performance could plausibly range from 27% reduced risk up to 39% increased risk.

Figure C5. Adult (18+) 3-year graft failure HR estimate

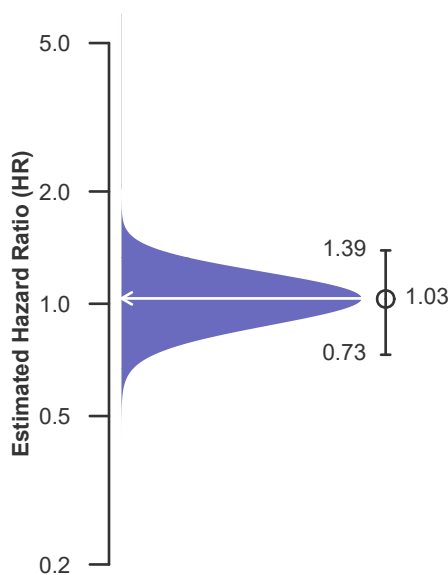
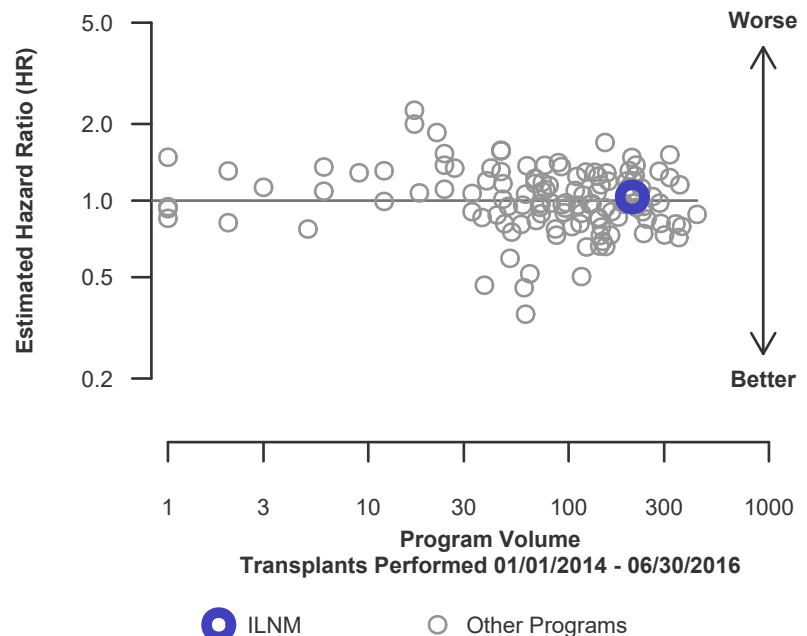


Figure C6. Adult (18+) 3-year graft failure HR program comparison





C. Transplant Information

Table C7D. Adult (18+) 3-year survival with a functioning deceased donor graft
Single organ transplants performed between 01/01/2014 and 06/30/2016
Deaths and retransplants are considered graft failures

	ILNM	U.S.
Number of transplants evaluated	175	13,978
Estimated probability of surviving with a functioning graft at 3 years (unadjusted for patient and donor characteristics)	85.71%	84.20%
Expected probability of surviving with a functioning graft at 3 years (adjusted for patient and donor characteristics)	83.61%	--
Number of observed graft failures (including deaths) during the first 3 years after transplant	25	2,209
Number of expected graft failures (including deaths) during the first 3 years after transplant	28.75	--
Estimated hazard ratio*	0.88	--
95% credible interval for the hazard ratio**	[0.58, 1.24]	--

* The hazard ratio provides an estimate of how Northwestern Memorial Hospital (ILNM)'s results compare with what was expected based on modeling the transplant outcomes from all U.S. programs. A ratio above 1 indicates higher than expected graft failure rates (e.g., a hazard ratio of 1.5 would indicate 50% higher risk), and a ratio below 1 indicates lower than expected graft failure rates (e.g., a hazard ratio of 0.75 would indicate 25% lower risk). If ILNM's graft failure rate were precisely the expected rate, the estimated hazard ratio would be 1.0.

** The 95% credible interval, [0.58, 1.24], indicates the location of ILNM's true hazard ratio with 95% probability. The best estimate is 12% lower risk of graft failure compared to an average program, but ILNM's performance could plausibly range from 42% reduced risk up to 24% increased risk.

Figure C5D. Adult (18+) 3-year deceased donor graft failure HR estimate

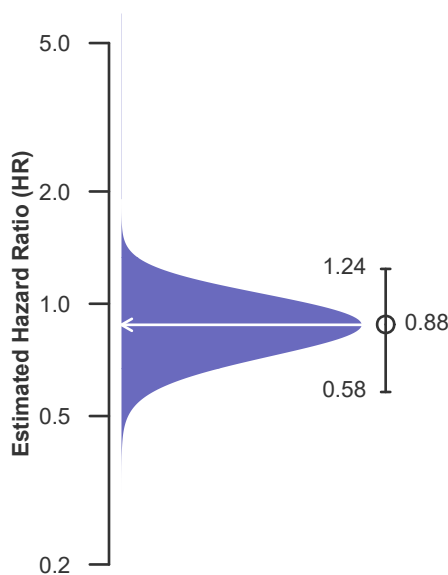
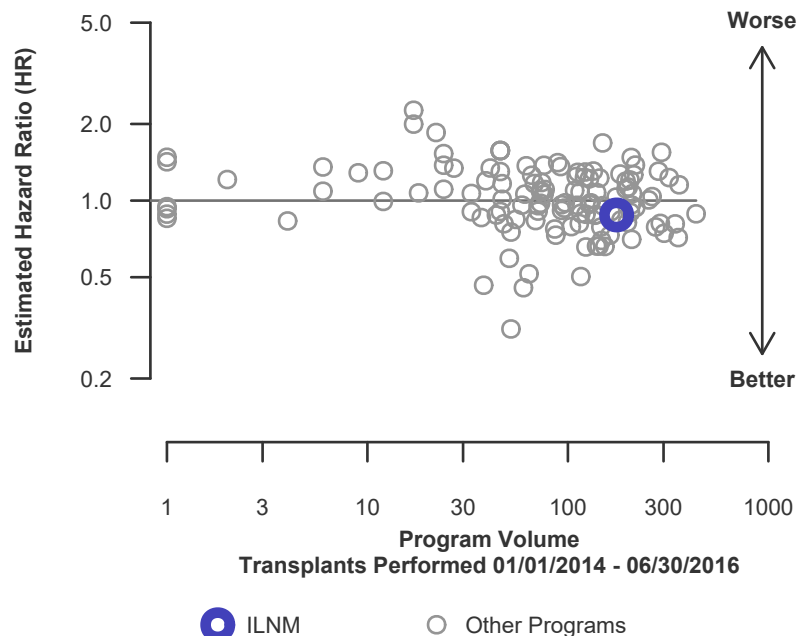


Figure C6D. Adult (18+) 3-year deceased donor graft failure HR program comparison





C. Transplant Information

Table C7L. Adult (18+) 3-year survival with a functioning living donor graft
Single organ transplants performed between 01/01/2014 and 06/30/2016
Deaths and retransplants are considered graft failures

	ILNM	U.S.
Number of transplants evaluated	33	648
Estimated probability of surviving with a functioning graft at 3 years (unadjusted for patient and donor characteristics)	69.70%	83.33%
Expected probability of surviving with a functioning graft at 3 years (adjusted for patient and donor characteristics)	83.35%	--
Number of observed graft failures (including deaths) during the first 3 years after transplant	10	108
Number of expected graft failures (including deaths) during the first 3 years after transplant	5.05	--
Estimated hazard ratio*	1.70	--
95% credible interval for the hazard ratio**	[0.88, 2.79]	--

* The hazard ratio provides an estimate of how Northwestern Memorial Hospital (ILNM)'s results compare with what was expected based on modeling the transplant outcomes from all U.S. programs. A ratio above 1 indicates higher than expected graft failure rates (e.g., a hazard ratio of 1.5 would indicate 50% higher risk), and a ratio below 1 indicates lower than expected graft failure rates (e.g., a hazard ratio of 0.75 would indicate 25% lower risk). If ILNM's graft failure rate were precisely the expected rate, the estimated hazard ratio would be 1.0.

** The 95% credible interval, [0.88, 2.79], indicates the location of ILNM's true hazard ratio with 95% probability. The best estimate is 70% higher risk of graft failure compared to an average program, but ILNM's performance could plausibly range from 12% reduced risk up to 179% increased risk.

Figure C5L. Adult (18+) 3-year living donor graft failure HR estimate

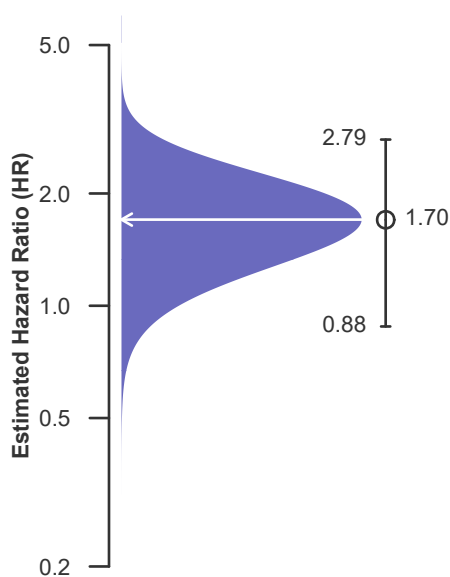
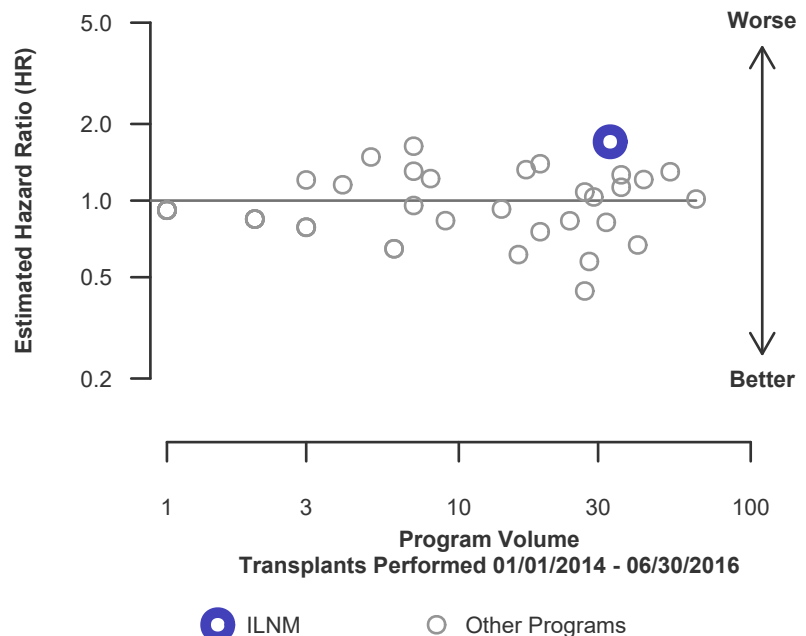


Figure C6L. Adult (18+) 3-year living donor graft failure HR program comparison





C. Transplant Information

Table C8. Pediatric (<18) 1-month survival with a functioning graft
Single organ transplants performed between 07/01/2016 and 12/31/2018
Deaths and retransplants are considered graft failures

	ILNM	U.S.
Number of transplants evaluated	1	1,333
Estimated probability of surviving with a functioning graft at 1 month (unadjusted for patient and donor characteristics)	100.00%	95.57%
Expected probability of surviving with a functioning graft at 1 month (adjusted for patient and donor characteristics)	95.96%	--
Number of observed graft failures (including deaths) during the first month after transplant	0	59
Number of expected graft failures (including deaths) during the first month after transplant	0.04	--
Estimated hazard ratio*	0.98	--
95% credible interval for the hazard ratio**	[0.12, 2.73]	--

* The hazard ratio provides an estimate of how Northwestern Memorial Hospital (ILNM)'s results compare with what was expected based on modeling the transplant outcomes from all U.S. programs. A ratio above 1 indicates higher than expected graft failure rates (e.g., a hazard ratio of 1.5 would indicate 50% higher risk), and a ratio below 1 indicates lower than expected graft failure rates (e.g., a hazard ratio of 0.75 would indicate 25% lower risk). If ILNM's graft failure rate were precisely the expected rate, the estimated hazard ratio would be 1.0.

** The 95% credible interval, [0.12, 2.73], indicates the location of ILNM's true hazard ratio with 95% probability. The best estimate is 2% lower risk of graft failure compared to an average program, but ILNM's performance could plausibly range from 88% reduced risk up to 173% increased risk.

Figure C7. Pediatric (<18) 1-month graft failure HR estimate

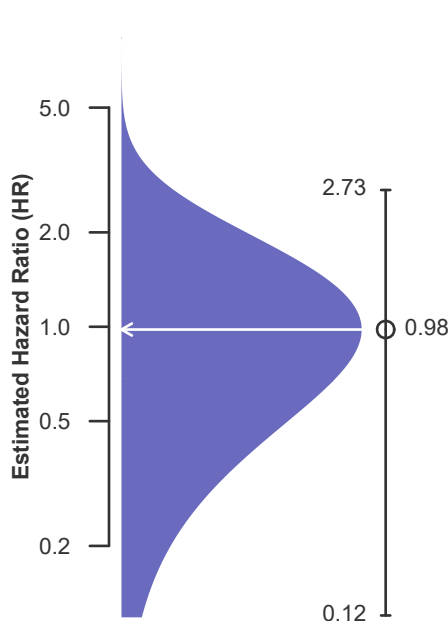
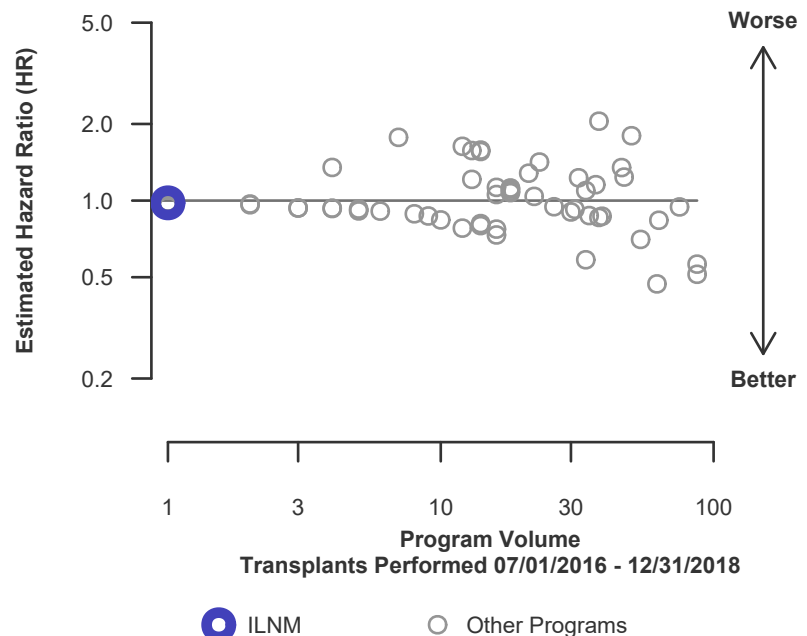


Figure C8. Pediatric (<18) 1-month graft failure HR program comparison





C. Transplant Information

Table C8D. Pediatric (<18) 1-month survival with a functioning deceased donor graft
Single organ transplants performed between 07/01/2016 and 12/31/2018
Deaths and retransplants are considered graft failures

	ILNM	U.S.
Number of transplants evaluated	1	1,159
Estimated probability of surviving with a functioning graft at 1 month (unadjusted for patient and donor characteristics)	100.00%	95.43%
Expected probability of surviving with a functioning graft at 1 month (adjusted for patient and donor characteristics)	95.96%	--
Number of observed graft failures (including deaths) during the first month after transplant	0	53
Number of expected graft failures (including deaths) during the first month after transplant	0.04	--
Estimated hazard ratio*	0.98	--
95% credible interval for the hazard ratio**	[0.12, 2.73]	--

* The hazard ratio provides an estimate of how Northwestern Memorial Hospital (ILNM)'s results compare with what was expected based on modeling the transplant outcomes from all U.S. programs. A ratio above 1 indicates higher than expected graft failure rates (e.g., a hazard ratio of 1.5 would indicate 50% higher risk), and a ratio below 1 indicates lower than expected graft failure rates (e.g., a hazard ratio of 0.75 would indicate 25% lower risk). If ILNM's graft failure rate were precisely the expected rate, the estimated hazard ratio would be 1.0.

** The 95% credible interval, [0.12, 2.73], indicates the location of ILNM's true hazard ratio with 95% probability. The best estimate is 2% lower risk of graft failure compared to an average program, but ILNM's performance could plausibly range from 88% reduced risk up to 173% increased risk.

Figure C7D. Pediatric (<18) 1-month deceased donor graft failure HR estimate

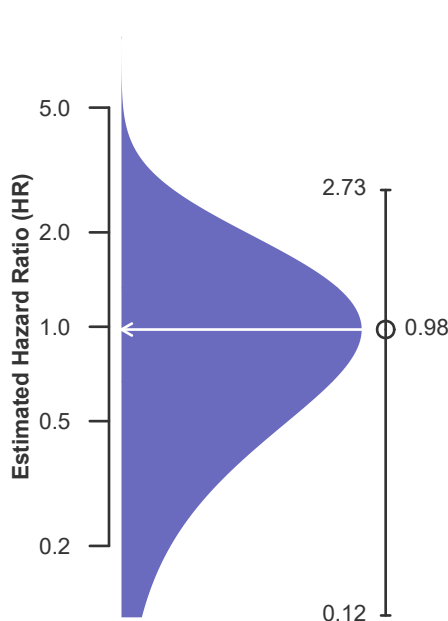
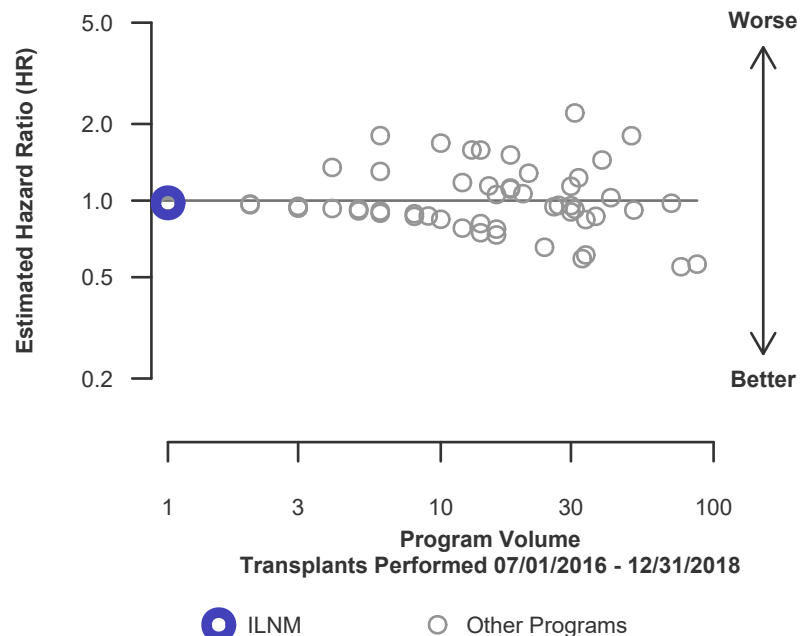


Figure C8D. Pediatric (<18) 1-month deceased donor graft failure HR program comparison





C. Transplant Information

Table C8L. Pediatric (<18) 1-month survival with a functioning living donor graft
Single organ transplants performed between 07/01/2016 and 12/31/2018
Deaths and retransplants are considered graft failures

This center did not perform any
transplants relevant to
this table during
07/01/2016-12/31/2018

Figure C7L. Pediatric (<18)
1-month living donor graft failure
HR estimate

This center did not perform any
transplants relevant to
this figure during
07/01/2016-12/31/2018

Figure C8L. Pediatric (<18) 1-month living donor graft failure
HR program comparison

This center did not perform any
transplants relevant to
this figure during
07/01/2016-12/31/2018



C. Transplant Information

Table C9. Pediatric (<18) 1-year survival with a functioning graft
Single organ transplants performed between 07/01/2016 and 12/31/2018
Deaths and retransplants are considered graft failures

	ILNM	U.S.
Number of transplants evaluated	1	1,333
Estimated probability of surviving with a functioning graft at 1 year (unadjusted for patient and donor characteristics)	100.00%	92.26%
Expected probability of surviving with a functioning graft at 1 year (adjusted for patient and donor characteristics)	92.04%	--
Number of observed graft failures (including deaths) during the first year after transplant	0	101
Number of expected graft failures (including deaths) during the first year after transplant	0.08	--
Estimated hazard ratio*	0.96	--
95% credible interval for the hazard ratio**	[0.12, 2.67]	--

* The hazard ratio provides an estimate of how Northwestern Memorial Hospital (ILNM)'s results compare with what was expected based on modeling the transplant outcomes from all U.S. programs. A ratio above 1 indicates higher than expected graft failure rates (e.g., a hazard ratio of 1.5 would indicate 50% higher risk), and a ratio below 1 indicates lower than expected graft failure rates (e.g., a hazard ratio of 0.75 would indicate 25% lower risk). If ILNM's graft failure rate were precisely the expected rate, the estimated hazard ratio would be 1.0.

** The 95% credible interval, [0.12, 2.67], indicates the location of ILNM's true hazard ratio with 95% probability. The best estimate is 4% lower risk of graft failure compared to an average program, but ILNM's performance could plausibly range from 88% reduced risk up to 167% increased risk.

Figure C9. Pediatric (<18) 1-year graft failure HR estimate

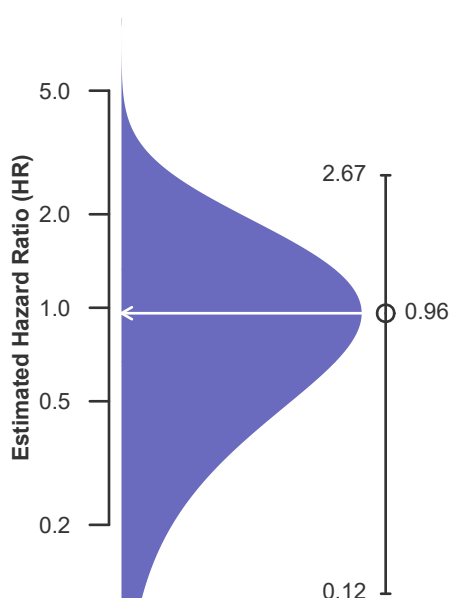
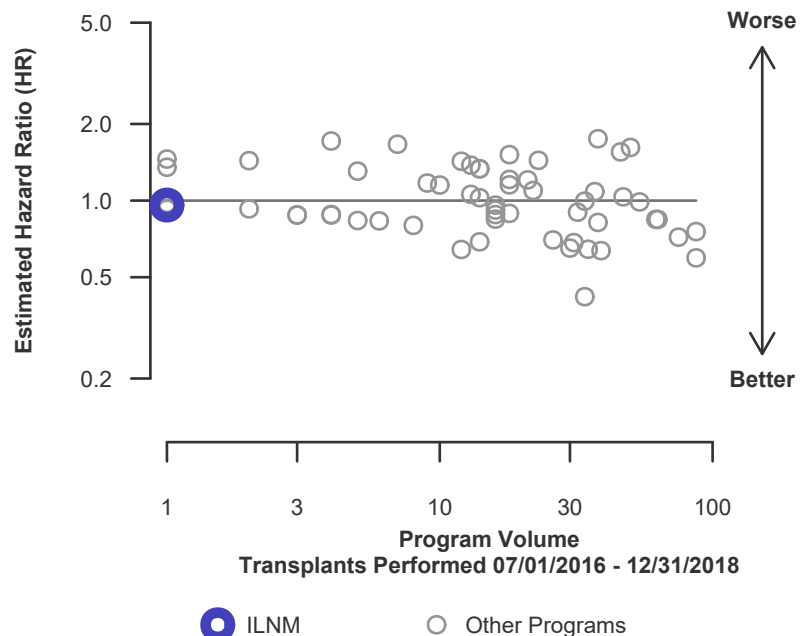


Figure C10. Pediatric (<18) 1-year graft failure HR program comparison





C. Transplant Information

Table C9D. Pediatric (<18) 1-year survival with a functioning deceased donor graft
Single organ transplants performed between 07/01/2016 and 12/31/2018
Deaths and retransplants are considered graft failures

	ILNM	U.S.
Number of transplants evaluated	1	1,159
Estimated probability of surviving with a functioning graft at 1 year (unadjusted for patient and donor characteristics)	100.00%	91.88%
Expected probability of surviving with a functioning graft at 1 year (adjusted for patient and donor characteristics)	92.04%	--
Number of observed graft failures (including deaths) during the first year after transplant	0	92
Number of expected graft failures (including deaths) during the first year after transplant	0.08	--
Estimated hazard ratio*	0.96	--
95% credible interval for the hazard ratio**	[0.12, 2.67]	--

* The hazard ratio provides an estimate of how Northwestern Memorial Hospital (ILNM)'s results compare with what was expected based on modeling the transplant outcomes from all U.S. programs. A ratio above 1 indicates higher than expected graft failure rates (e.g., a hazard ratio of 1.5 would indicate 50% higher risk), and a ratio below 1 indicates lower than expected graft failure rates (e.g., a hazard ratio of 0.75 would indicate 25% lower risk). If ILNM's graft failure rate were precisely the expected rate, the estimated hazard ratio would be 1.0.

** The 95% credible interval, [0.12, 2.67], indicates the location of ILNM's true hazard ratio with 95% probability. The best estimate is 4% lower risk of graft failure compared to an average program, but ILNM's performance could plausibly range from 88% reduced risk up to 167% increased risk.

Figure C9D. Pediatric (<18) 1-year deceased donor graft failure HR estimate

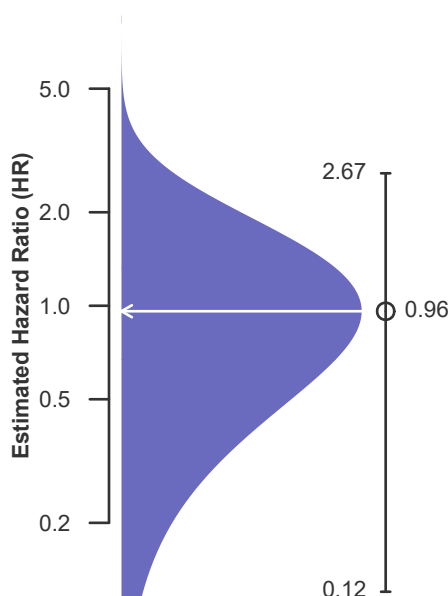
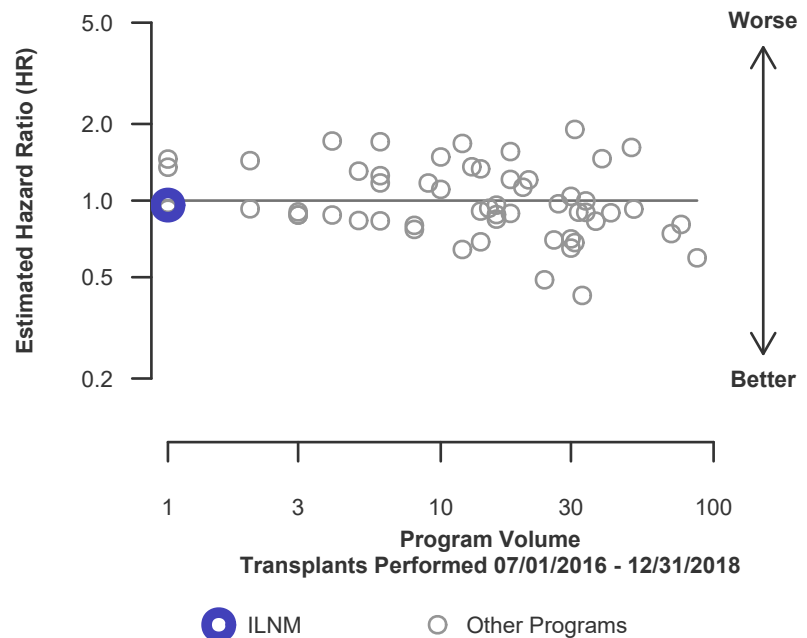


Figure C10D. Pediatric (<18) 1-year deceased donor graft failure HR program comparison





C. Transplant Information

Table C9L. Pediatric (<18) 1-year survival with a functioning living donor graft
Single organ transplants performed between 07/01/2016 and 12/31/2018
Deaths and retransplants are considered graft failures

This center did not perform any
transplants relevant to
this table during
07/01/2016-12/31/2018

**Figure C9L. Pediatric (<18) 1-year
living donor graft failure HR
estimate**

This center did not perform any
transplants relevant to
this figure during
07/01/2016-12/31/2018

**Figure C10L. Pediatric (<18) 1-year living donor graft failure
HR program comparison**

This center did not perform any
transplants relevant to
this figure during
07/01/2016-12/31/2018



C. Transplant Information

Table C10. Pediatric (<18) 3-year survival with a functioning graft
Single organ transplants performed between 01/01/2014 and 06/30/2016
Deaths and retransplants are considered graft failures

This center did not perform any
transplants relevant to
this table during
01/01/2014-06/30/2016

**Figure C11. Pediatric (<18) 3-year
graft failure HR estimate**

This center did not perform any
transplants relevant to
this figure during
01/01/2014-06/30/2016

**Figure C12. Pediatric (<18) 3-year graft failure HR program
comparison**

This center did not perform any
transplants relevant to
this figure during
01/01/2014-06/30/2016



C. Transplant Information

Table C10D. Pediatric (<18) 3-year survival with a functioning deceased donor graft
Single organ transplants performed between 01/01/2014 and 06/30/2016
Deaths and retransplants are considered graft failures

This center did not perform any
transplants relevant to
this table during
01/01/2014-06/30/2016

Figure C11D. Pediatric (<18)
3-year deceased donor graft
failure HR estimate

This center did not perform any
transplants relevant to
this figure during
01/01/2014-06/30/2016

Figure C12D. Pediatric (<18) 3-year deceased donor graft
failure HR program comparison

This center did not perform any
transplants relevant to
this figure during
01/01/2014-06/30/2016



C. Transplant Information

Table C10L. Pediatric (<18) 3-year survival with a functioning living donor graft
Single organ transplants performed between 01/01/2014 and 06/30/2016
Deaths and retransplants are considered graft failures

This center did not perform any
transplants relevant to
this table during
01/01/2014-06/30/2016

Figure C11L. Pediatric (<18)
3-year living donor graft failure
HR estimate

This center did not perform any
transplants relevant to
this figure during
01/01/2014-06/30/2016

Figure C12L. Pediatric (<18) 3-year living donor graft failure
HR program comparison

This center did not perform any
transplants relevant to
this figure during
01/01/2014-06/30/2016



C. Transplant Information

Table C11. Adult (18+) 1-month patient survival
Single organ transplants performed between 07/01/2016 and 12/31/2018
Retransplants excluded

	ILNM	U.S.
Number of transplants evaluated	213	16,277
Estimated probability of surviving at 1 month (unadjusted for patient and donor characteristics)	96.71%	97.59%
Expected probability of surviving at 1 month (adjusted for patient and donor characteristics)	97.59%	--
Number of observed deaths during the first month after transplant	7	393
Number of expected deaths during the first month after transplant	5.11	--
Estimated hazard ratio*	1.27	--
95% credible interval for the hazard ratio**	[0.58, 2.22]	--

* The hazard ratio provides an estimate of how Northwestern Memorial Hospital (ILNM)'s results compare with what was expected based on modeling the transplant outcomes from all U.S. programs. A ratio above 1 indicates higher than expected patient death rates (e.g., a hazard ratio of 1.5 would indicate 50% higher risk), and a ratio below 1 indicates lower than expected patient death rates (e.g., a hazard ratio of 0.75 would indicate 25% lower risk). If ILNM's patient death rate were precisely the expected rate, the estimated hazard ratio would be 1.0.

** The 95% credible interval, [0.58, 2.22], indicates the location of ILNM's true hazard ratio with 95% probability. The best estimate is 27% higher risk of patient death compared to an average program, but ILNM's performance could plausibly range from 42% reduced risk up to 122% increased risk.

Figure C13. Adult (18+) 1-month patient death HR estimate

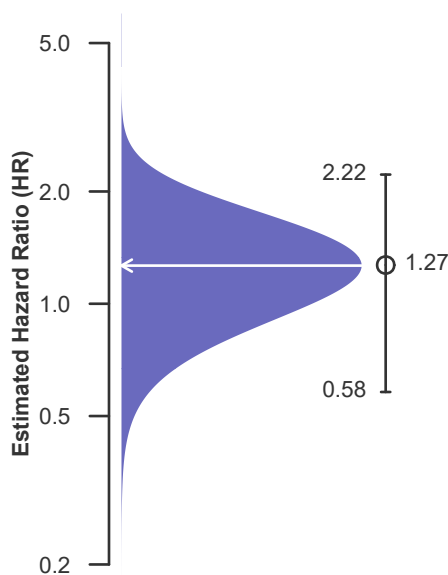
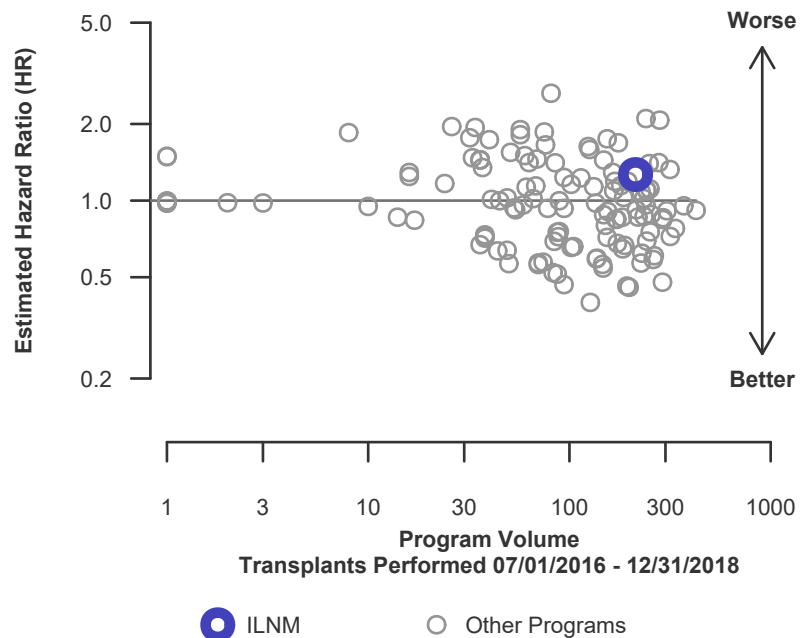


Figure C14. Adult (18+) 1-month patient death HR program comparison





C. Transplant Information

Table C11D. Adult (18+) 1-month patient survival (deceased donor graft recipients)
Single organ transplants performed between 07/01/2016 and 12/31/2018
Retransplants excluded

	ILNM	U.S.
Number of transplants evaluated	192	15,513
Estimated probability of surviving at 1 month (unadjusted for patient and donor characteristics)	96.35%	97.53%
Expected probability of surviving at 1 month (adjusted for patient and donor characteristics)	97.46%	--
Number of observed deaths during the first month after transplant	7	383
Number of expected deaths during the first month after transplant	4.83	--
Estimated hazard ratio*	1.32	--
95% credible interval for the hazard ratio**	[0.60, 2.31]	--

* The hazard ratio provides an estimate of how Northwestern Memorial Hospital (ILNM)'s results compare with what was expected based on modeling the transplant outcomes from all U.S. programs. A ratio above 1 indicates higher than expected patient death rates (e.g., a hazard ratio of 1.5 would indicate 50% higher risk), and a ratio below 1 indicates lower than expected patient death rates (e.g., a hazard ratio of 0.75 would indicate 25% lower risk). If ILNM's patient death rate were precisely the expected rate, the estimated hazard ratio would be 1.0.

** The 95% credible interval, [0.60, 2.31], indicates the location of ILNM's true hazard ratio with 95% probability. The best estimate is 32% higher risk of patient death compared to an average program, but ILNM's performance could plausibly range from 40% reduced risk up to 131% increased risk.

Figure C13D. Adult (18+) 1-month patient death HR estimate (deceased donor grafts)

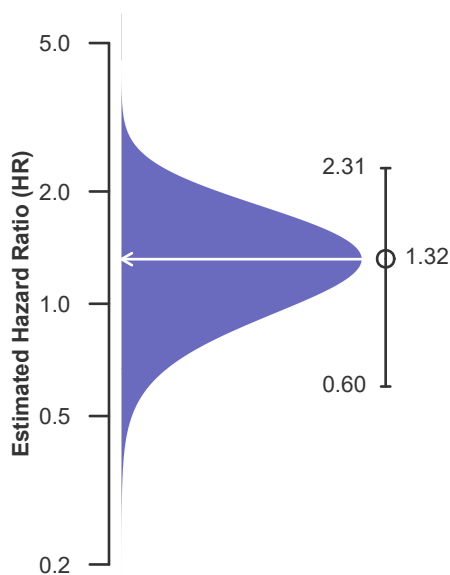
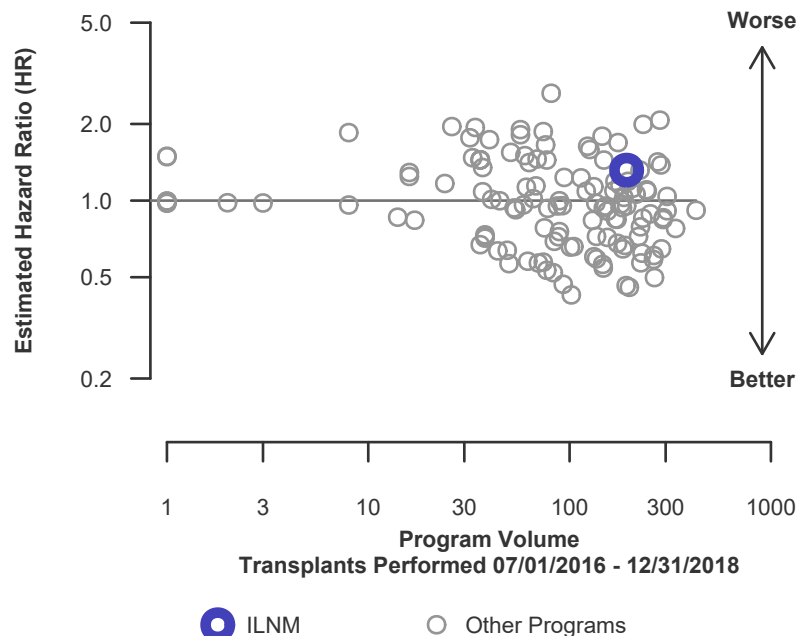


Figure C14D. Adult (18+) 1-month patient death HR program comparison (deceased donor grafts)





C. Transplant Information

Table C11L. Adult (18+) 1-month patient survival (living donor graft recipients)
Single organ transplants performed between 07/01/2016 and 12/31/2018
Retransplants excluded

	ILNM	U.S.
Number of transplants evaluated	21	764
Estimated probability of surviving at 1 month (unadjusted for patient and donor characteristics)	100.00%	98.69%
Expected probability of surviving at 1 month (adjusted for patient and donor characteristics)	98.69%	--
Number of observed deaths during the first month after transplant	0	10
Number of expected deaths during the first month after transplant	0.28	--
Estimated hazard ratio*	0.88	--
95% credible interval for the hazard ratio**	[0.11, 2.45]	--

* The hazard ratio provides an estimate of how Northwestern Memorial Hospital (ILNM)'s results compare with what was expected based on modeling the transplant outcomes from all U.S. programs. A ratio above 1 indicates higher than expected patient death rates (e.g., a hazard ratio of 1.5 would indicate 50% higher risk), and a ratio below 1 indicates lower than expected patient death rates (e.g., a hazard ratio of 0.75 would indicate 25% lower risk). If ILNM's patient death rate were precisely the expected rate, the estimated hazard ratio would be 1.0.

** The 95% credible interval, [0.11, 2.45], indicates the location of ILNM's true hazard ratio with 95% probability. The best estimate is 12% lower risk of patient death compared to an average program, but ILNM's performance could plausibly range from 89% reduced risk up to 145% increased risk.

Figure C13L. Adult (18+) 1-month patient death HR estimate (living donor grafts)

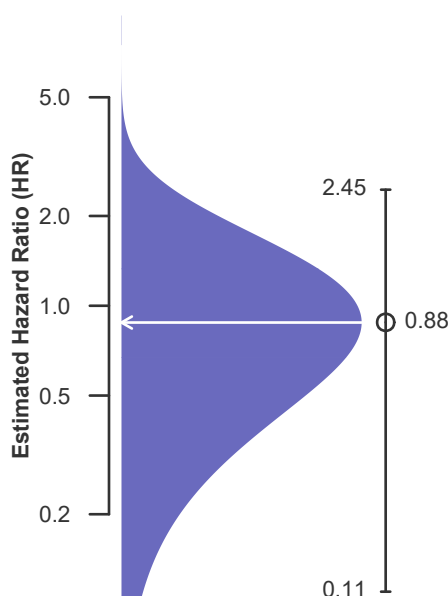
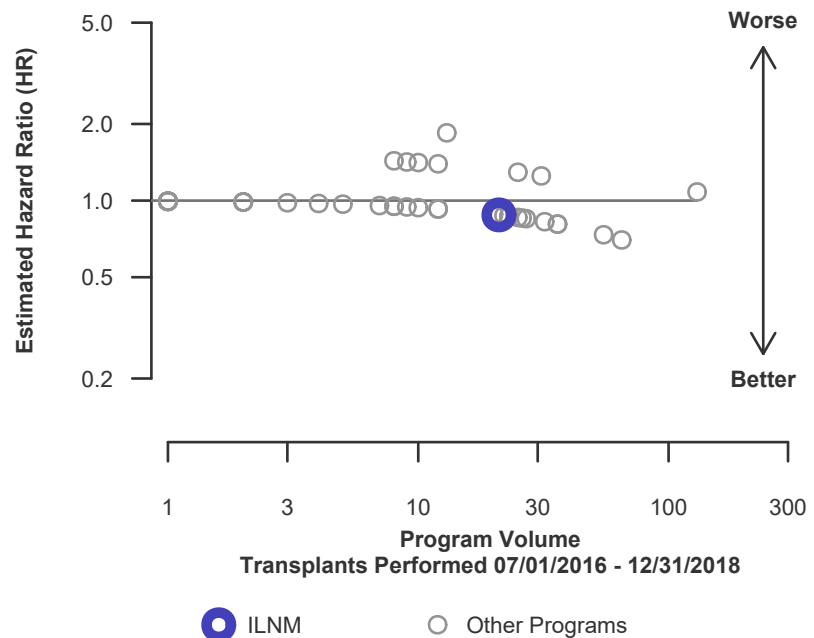


Figure C14L. Adult (18+) 1-month patient death HR program comparison (living donor grafts)





C. Transplant Information

Table C12. Adult (18+) 1-year patient survival
Single organ transplants performed between 07/01/2016 and 12/31/2018
Retransplants excluded

	ILNM	U.S.
Number of transplants evaluated	213	16,277
Estimated probability of surviving at 1 year (unadjusted for patient and donor characteristics)	94.55%	93.22%
Expected probability of surviving at 1 year (adjusted for patient and donor characteristics)	93.01%	--
Number of observed deaths during the first year after transplant	11	1,040
Number of expected deaths during the first year after transplant	14.13	--
Estimated hazard ratio*	0.81	--
95% credible interval for the hazard ratio**	[0.43, 1.30]	--

* The hazard ratio provides an estimate of how Northwestern Memorial Hospital (ILNM)'s results compare with what was expected based on modeling the transplant outcomes from all U.S. programs. A ratio above 1 indicates higher than expected patient death rates (e.g., a hazard ratio of 1.5 would indicate 50% higher risk), and a ratio below 1 indicates lower than expected patient death rates (e.g., a hazard ratio of 0.75 would indicate 25% lower risk). If ILNM's patient death rate were precisely the expected rate, the estimated hazard ratio would be 1.0.

** The 95% credible interval, [0.43, 1.30], indicates the location of ILNM's true hazard ratio with 95% probability. The best estimate is 19% lower risk of patient death compared to an average program, but ILNM's performance could plausibly range from 57% reduced risk up to 30% increased risk.

Figure C15. Adult (18+) 1-year patient death HR estimate

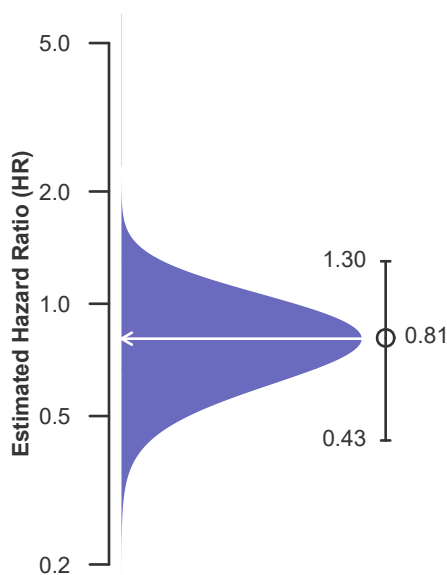
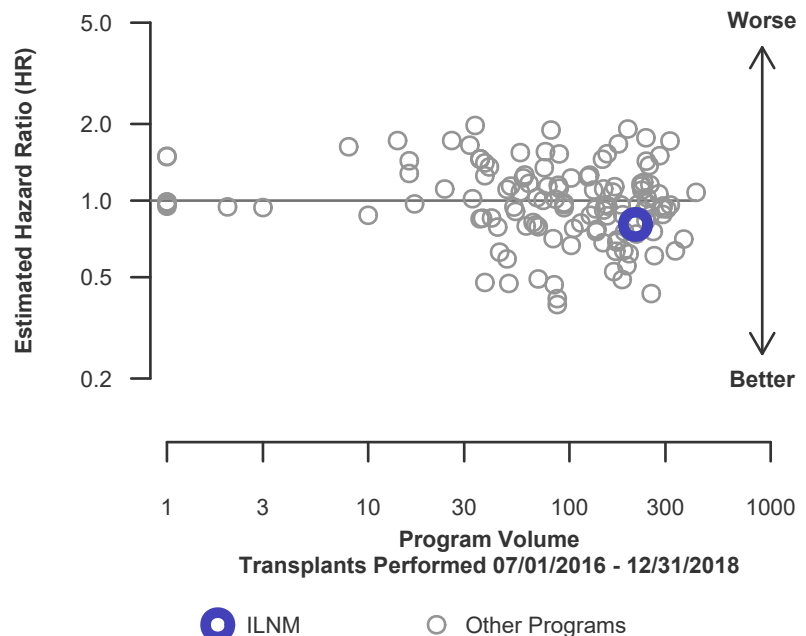


Figure C16. Adult (18+) 1-year patient death HR program comparison





C. Transplant Information

Table C12D. Adult (18+) 1-year patient survival (deceased donor graft recipients)
Single organ transplants performed between 07/01/2016 and 12/31/2018
Retransplants excluded

	ILNM	U.S.
Number of transplants evaluated	192	15,513
Estimated probability of surviving at 1 year (unadjusted for patient and donor characteristics)	93.94%	93.08%
Expected probability of surviving at 1 year (adjusted for patient and donor characteristics)	92.66%	--
Number of observed deaths during the first year after transplant	11	1,013
Number of expected deaths during the first year after transplant	13.35	--
Estimated hazard ratio*	0.85	--
95% credible interval for the hazard ratio**	[0.45, 1.37]	--

* The hazard ratio provides an estimate of how Northwestern Memorial Hospital (ILNM)'s results compare with what was expected based on modeling the transplant outcomes from all U.S. programs. A ratio above 1 indicates higher than expected patient death rates (e.g., a hazard ratio of 1.5 would indicate 50% higher risk), and a ratio below 1 indicates lower than expected patient death rates (e.g., a hazard ratio of 0.75 would indicate 25% lower risk). If ILNM's patient death rate were precisely the expected rate, the estimated hazard ratio would be 1.0.

** The 95% credible interval, [0.45, 1.37], indicates the location of ILNM's true hazard ratio with 95% probability. The best estimate is 15% lower risk of patient death compared to an average program, but ILNM's performance could plausibly range from 55% reduced risk up to 37% increased risk.

Figure C15D. Adult (18+) 1-year patient death HR estimate (deceased donor grafts)

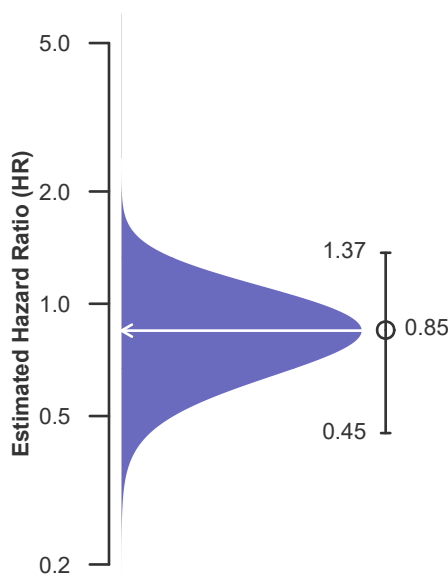
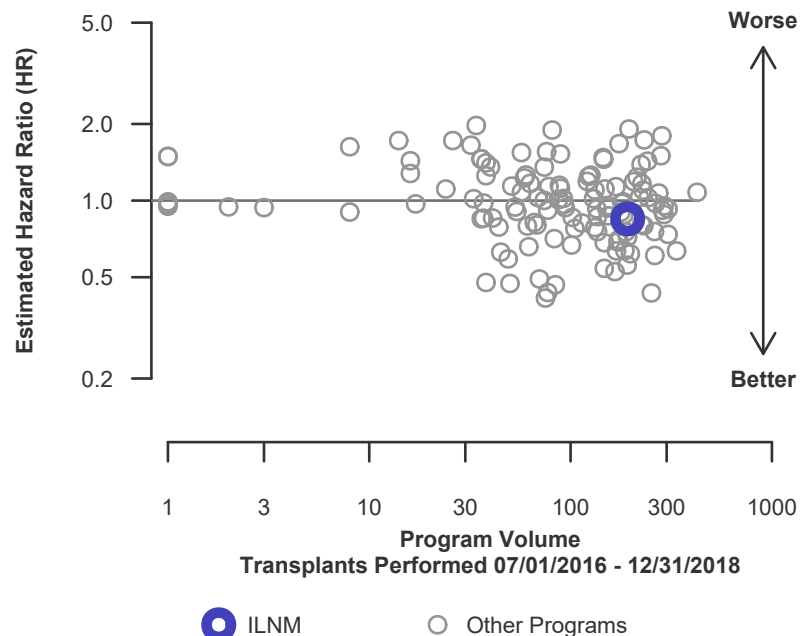


Figure C16D. Adult (18+) 1-year patient death HR program comparison (deceased donor grafts)





C. Transplant Information

Table C12L. Adult (18+) 1-year patient survival (living donor graft recipients)
Single organ transplants performed between 07/01/2016 and 12/31/2018
Retransplants excluded

	ILNM	U.S.
Number of transplants evaluated	21	764
Estimated probability of surviving at 1 year (unadjusted for patient and donor characteristics)	100.00%	96.17%
Expected probability of surviving at 1 year (adjusted for patient and donor characteristics)	96.17%	--
Number of observed deaths during the first year after transplant	0	27
Number of expected deaths during the first year after transplant	0.78	--
Estimated hazard ratio*	0.72	--
95% credible interval for the hazard ratio**	[0.09, 2.00]	--

* The hazard ratio provides an estimate of how Northwestern Memorial Hospital (ILNM)'s results compare with what was expected based on modeling the transplant outcomes from all U.S. programs. A ratio above 1 indicates higher than expected patient death rates (e.g., a hazard ratio of 1.5 would indicate 50% higher risk), and a ratio below 1 indicates lower than expected patient death rates (e.g., a hazard ratio of 0.75 would indicate 25% lower risk). If ILNM's patient death rate were precisely the expected rate, the estimated hazard ratio would be 1.0.

** The 95% credible interval, [0.09, 2.00], indicates the location of ILNM's true hazard ratio with 95% probability. The best estimate is 28% lower risk of patient death compared to an average program, but ILNM's performance could plausibly range from 91% reduced risk up to 100% increased risk.

Figure C15L. Adult (18+) 1-year patient death HR estimate (living donor grafts)

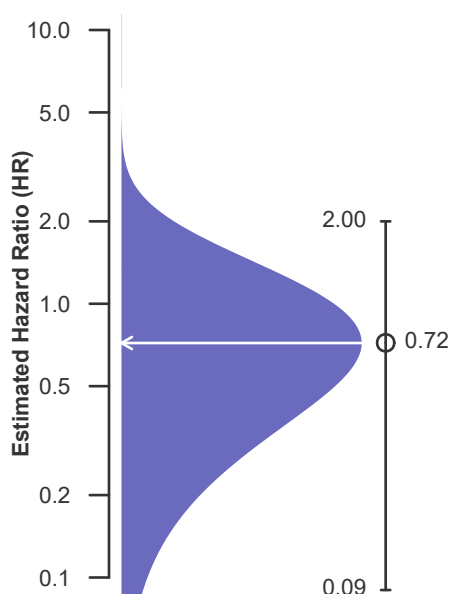
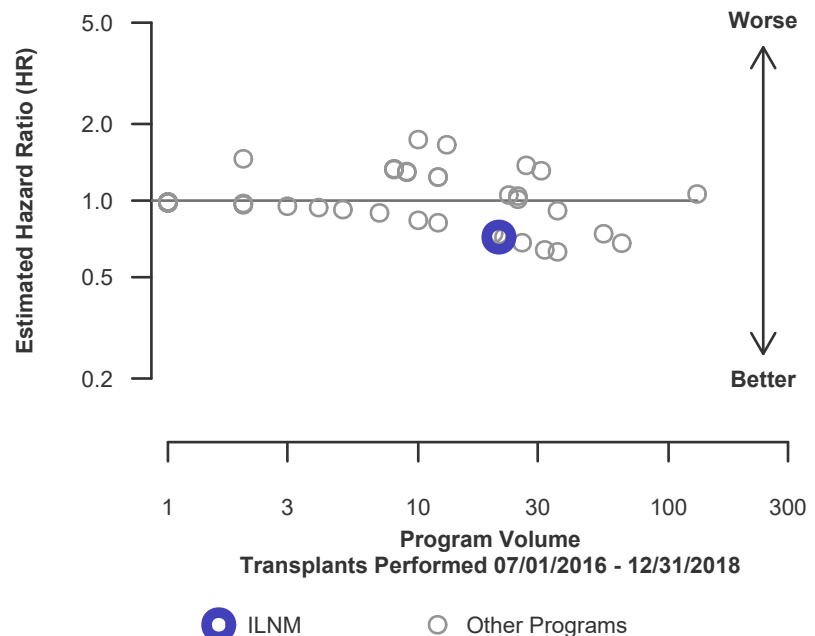


Figure C16L. Adult (18+) 1-year patient death HR program comparison (living donor grafts)





C. Transplant Information

Table C13. Adult (18+) 3-year patient survival
Single organ transplants performed between 01/01/2014 and 06/30/2016
Retransplants excluded

	ILNM	U.S.
Number of transplants evaluated	204	14,007
Estimated probability of surviving at 3 years (unadjusted for patient and donor characteristics)	85.29%	86.47%
Expected probability of surviving at 3 years (adjusted for patient and donor characteristics)	86.38%	--
Number of observed deaths during the first 3 years after transplant	30	1,895
Number of expected deaths during the first 3 years after transplant	27.23	--
Estimated hazard ratio*	1.09	--
95% credible interval for the hazard ratio**	[0.75, 1.51]	--

* The hazard ratio provides an estimate of how Northwestern Memorial Hospital (ILNM)'s results compare with what was expected based on modeling the transplant outcomes from all U.S. programs. A ratio above 1 indicates higher than expected patient death rates (e.g., a hazard ratio of 1.5 would indicate 50% higher risk), and a ratio below 1 indicates lower than expected patient death rates (e.g., a hazard ratio of 0.75 would indicate 25% lower risk). If ILNM's patient death rate were precisely the expected rate, the estimated hazard ratio would be 1.0.

** The 95% credible interval, [0.75, 1.51], indicates the location of ILNM's true hazard ratio with 95% probability. The best estimate is 9% higher risk of patient death compared to an average program, but ILNM's performance could plausibly range from 25% reduced risk up to 51% increased risk.

Figure C17. Adult (18+) 3-year patient death HR estimate

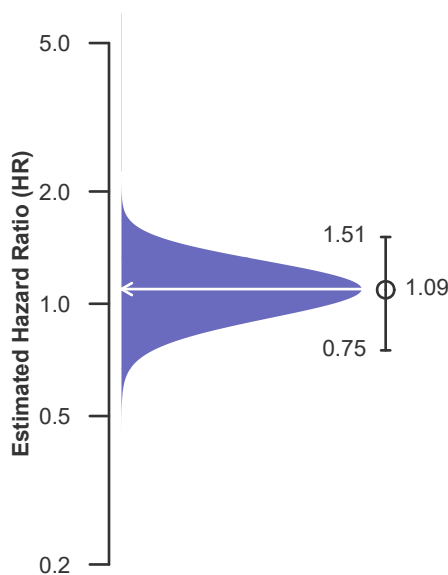
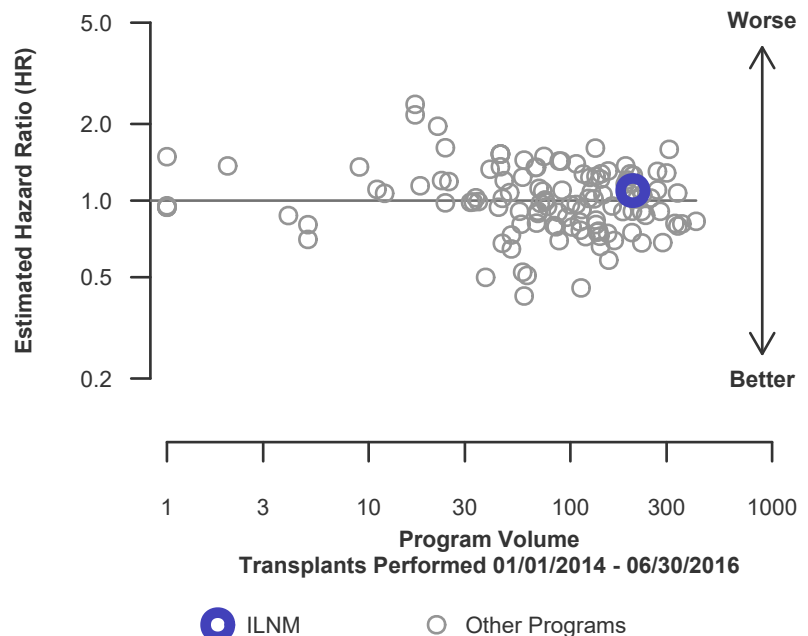


Figure C18. Adult (18+) 3-year patient death HR program comparison





C. Transplant Information

Table C13D. Adult (18+) 3-year patient survival (deceased donor graft recipients)
Single organ transplants performed between 01/01/2014 and 06/30/2016
Retransplants excluded

	ILNM	U.S.
Number of transplants evaluated	172	13,365
Estimated probability of surviving at 3 years (unadjusted for patient and donor characteristics)	86.63%	86.38%
Expected probability of surviving at 3 years (adjusted for patient and donor characteristics)	86.02%	--
Number of observed deaths during the first 3 years after transplant	23	1,820
Number of expected deaths during the first 3 years after transplant	23.71	--
Estimated hazard ratio*	0.97	--
95% credible interval for the hazard ratio**	[0.63, 1.39]	--

* The hazard ratio provides an estimate of how Northwestern Memorial Hospital (ILNM)'s results compare with what was expected based on modeling the transplant outcomes from all U.S. programs. A ratio above 1 indicates higher than expected patient death rates (e.g., a hazard ratio of 1.5 would indicate 50% higher risk), and a ratio below 1 indicates lower than expected patient death rates (e.g., a hazard ratio of 0.75 would indicate 25% lower risk). If ILNM's patient death rate were precisely the expected rate, the estimated hazard ratio would be 1.0.

** The 95% credible interval, [0.63, 1.39], indicates the location of ILNM's true hazard ratio with 95% probability. The best estimate is 3% lower risk of patient death compared to an average program, but ILNM's performance could plausibly range from 37% reduced risk up to 39% increased risk.

Figure C17D. Adult (18+) 3-year patient death HR estimate (deceased donor grafts)

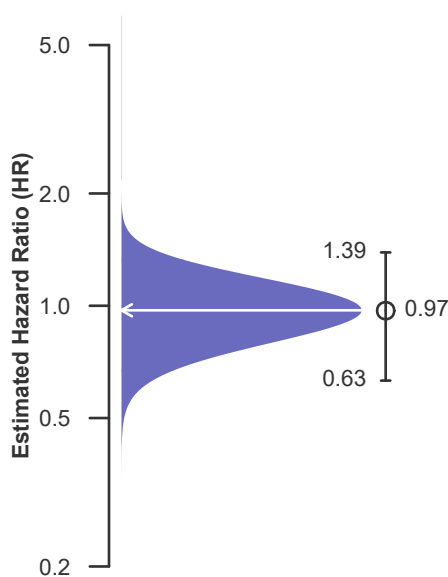
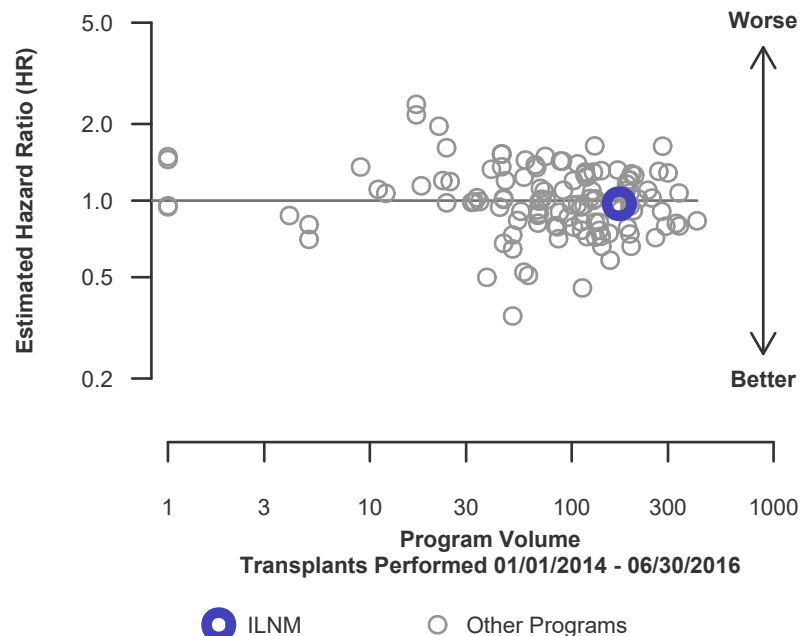


Figure C18D. Adult (18+) 3-year patient death HR program comparison (deceased donor grafts)





C. Transplant Information

Table C13L. Adult (18+) 3-year patient survival (living donor graft recipients)
Single organ transplants performed between 01/01/2014 and 06/30/2016
Retransplants excluded

	ILNM	U.S.
Number of transplants evaluated	32	642
Estimated probability of surviving at 3 years (unadjusted for patient and donor characteristics)	78.12%	88.32%
Expected probability of surviving at 3 years (adjusted for patient and donor characteristics)	88.33%	--
Number of observed deaths during the first 3 years after transplant	7	75
Number of expected deaths during the first 3 years after transplant	3.52	--
Estimated hazard ratio*	1.63	--
95% credible interval for the hazard ratio**	[0.75, 2.86]	--

* The hazard ratio provides an estimate of how Northwestern Memorial Hospital (ILNM)'s results compare with what was expected based on modeling the transplant outcomes from all U.S. programs. A ratio above 1 indicates higher than expected patient death rates (e.g., a hazard ratio of 1.5 would indicate 50% higher risk), and a ratio below 1 indicates lower than expected patient death rates (e.g., a hazard ratio of 0.75 would indicate 25% lower risk). If ILNM's patient death rate were precisely the expected rate, the estimated hazard ratio would be 1.0.

** The 95% credible interval, [0.75, 2.86], indicates the location of ILNM's true hazard ratio with 95% probability. The best estimate is 63% higher risk of patient death compared to an average program, but ILNM's performance could plausibly range from 25% reduced risk up to 186% increased risk.

Figure C17L. Adult (18+) 3-year patient death HR estimate (living donor grafts)

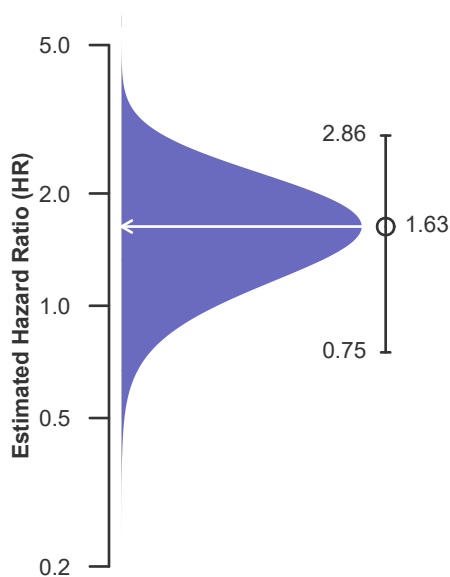
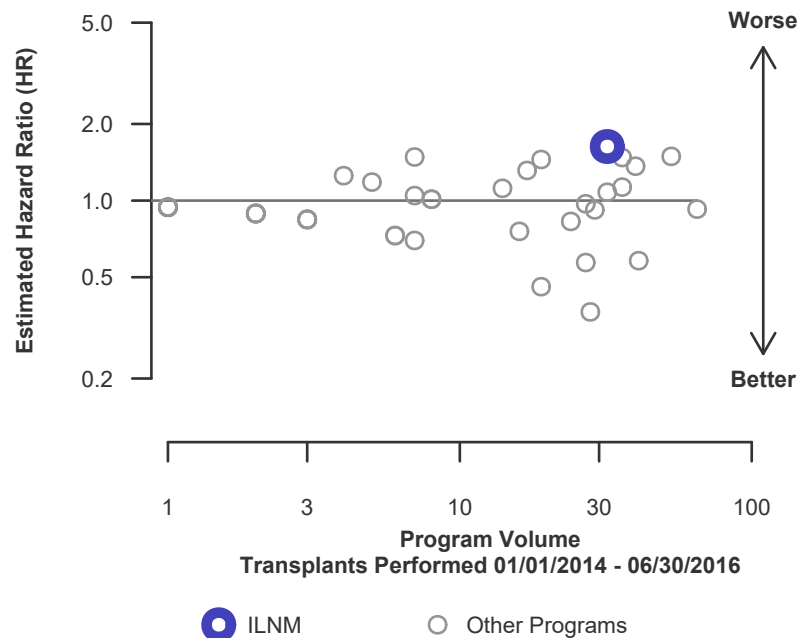


Figure C18L. Adult (18+) 3-year patient death HR program comparison (living donor grafts)





C. Transplant Information

Table C14. Pediatric (<18) 1-month patient survival
Single organ transplants performed between 07/01/2016 and 12/31/2018
Retransplants excluded

	ILNM	U.S.
Number of transplants evaluated	1	1,255
Estimated probability of surviving at 1 month (unadjusted for patient and donor characteristics)	100.00%	97.53%
Expected probability of surviving at 1 month (adjusted for patient and donor characteristics)	97.69%	--
Number of observed deaths during the first month after transplant	0	31
Number of expected deaths during the first month after transplant	0.02	--
Estimated hazard ratio*	0.99	--
95% credible interval for the hazard ratio**	[0.12, 2.75]	--

* The hazard ratio provides an estimate of how Northwestern Memorial Hospital (ILNM)'s results compare with what was expected based on modeling the transplant outcomes from all U.S. programs. A ratio above 1 indicates higher than expected patient death rates (e.g., a hazard ratio of 1.5 would indicate 50% higher risk), and a ratio below 1 indicates lower than expected patient death rates (e.g., a hazard ratio of 0.75 would indicate 25% lower risk). If ILNM's patient death rate were precisely the expected rate, the estimated hazard ratio would be 1.0.

** The 95% credible interval, [0.12, 2.75], indicates the location of ILNM's true hazard ratio with 95% probability. The best estimate is 1% lower risk of patient death compared to an average program, but ILNM's performance could plausibly range from 88% reduced risk up to 175% increased risk.

Figure C19. Pediatric (<18) 1-month patient death HR estimate

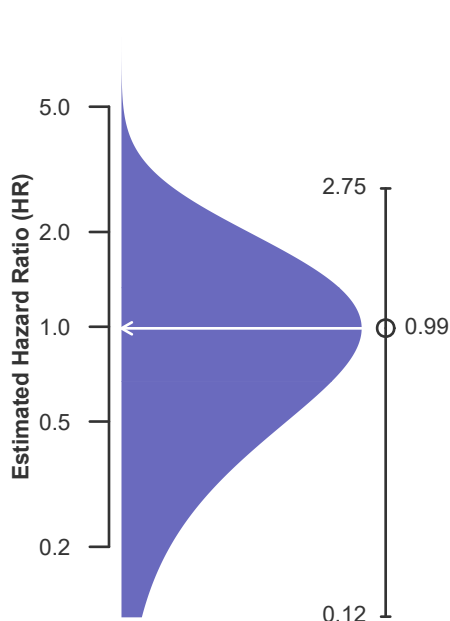
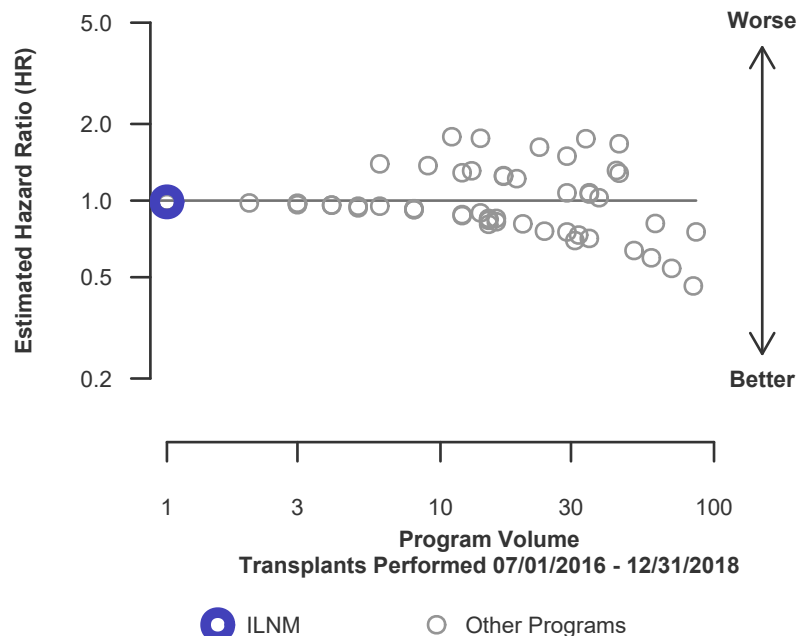


Figure C20. Pediatric (<18) 1-month patient death HR program comparison





C. Transplant Information

Table C14D. Pediatric (<18) 1-month patient survival (deceased donor graft recipients)
Single organ transplants performed between 07/01/2016 and 12/31/2018
Retransplants excluded

	ILNM	U.S.
Number of transplants evaluated	1	1,083
Estimated probability of surviving at 1 month (unadjusted for patient and donor characteristics)	100.00%	97.51%
Expected probability of surviving at 1 month (adjusted for patient and donor characteristics)	97.69%	--
Number of observed deaths during the first month after transplant	0	27
Number of expected deaths during the first month after transplant	0.02	--
Estimated hazard ratio*	0.99	--
95% credible interval for the hazard ratio**	[0.12, 2.75]	--

* The hazard ratio provides an estimate of how Northwestern Memorial Hospital (ILNM)'s results compare with what was expected based on modeling the transplant outcomes from all U.S. programs. A ratio above 1 indicates higher than expected patient death rates (e.g., a hazard ratio of 1.5 would indicate 50% higher risk), and a ratio below 1 indicates lower than expected patient death rates (e.g., a hazard ratio of 0.75 would indicate 25% lower risk). If ILNM's patient death rate were precisely the expected rate, the estimated hazard ratio would be 1.0.

** The 95% credible interval, [0.12, 2.75], indicates the location of ILNM's true hazard ratio with 95% probability. The best estimate is 1% lower risk of patient death compared to an average program, but ILNM's performance could plausibly range from 88% reduced risk up to 175% increased risk.

Figure C19D. Pediatric (<18) 1-month patient death HR estimate (deceased donor grafts)

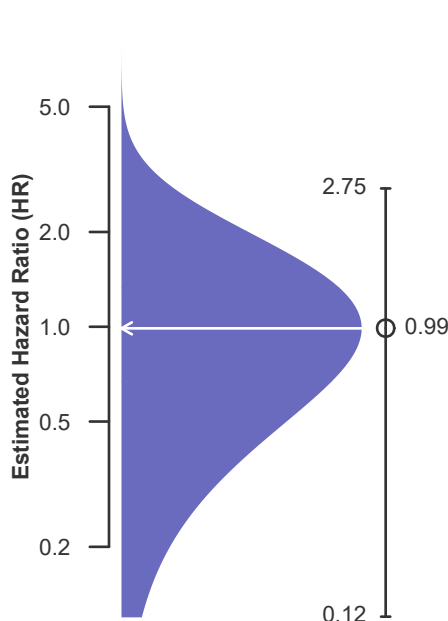
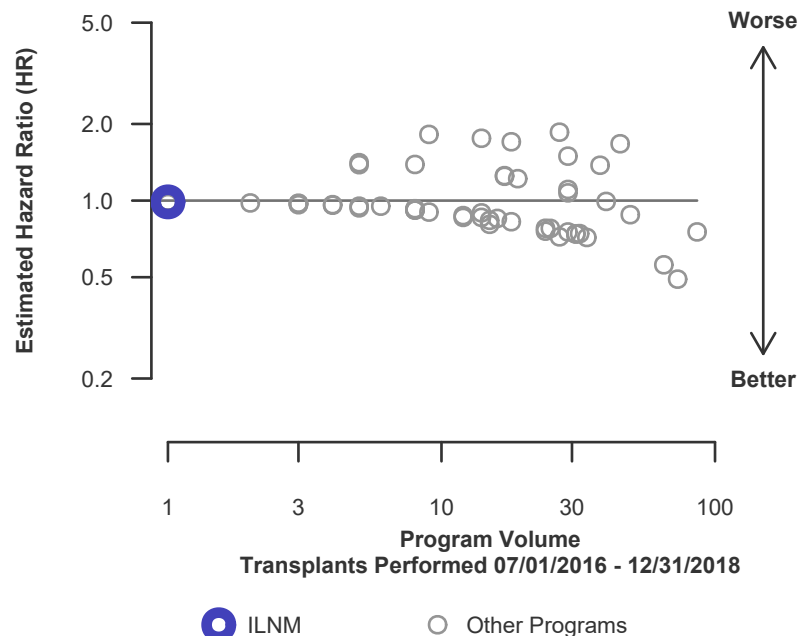


Figure C20D. Pediatric (<18) 1-month patient death HR program comparison (deceased donor grafts)





C. Transplant Information

Table C14L. Pediatric (<18) 1-month patient survival (living donor graft recipients)
Single organ transplants performed between 07/01/2016 and 12/31/2018
Retransplants excluded

This center did not perform any
transplants relevant to
this table during
07/01/2016-12/31/2018

Figure C19L. Pediatric (<18)
1-month patient death HR
estimate (living donor grafts)

This center did not perform any
transplants relevant to
this figure during
07/01/2016-12/31/2018

Figure C20L. Pediatric (<18) 1-month patient death HR
program comparison (living donor grafts)

This center did not perform any
transplants relevant to
this figure during
07/01/2016-12/31/2018



C. Transplant Information

Table C15. Pediatric (<18) 1-year patient survival
Single organ transplants performed between 07/01/2016 and 12/31/2018
Retransplants excluded

	ILNM	U.S.
Number of transplants evaluated	1	1,255
Estimated probability of surviving at 1 year (unadjusted for patient and donor characteristics)	100.00%	95.06%
Expected probability of surviving at 1 year (adjusted for patient and donor characteristics)	94.68%	--
Number of observed deaths during the first year after transplant	0	61
Number of expected deaths during the first year after transplant	0.05	--
Estimated hazard ratio*	0.97	--
95% credible interval for the hazard ratio**	[0.12, 2.71]	--

* The hazard ratio provides an estimate of how Northwestern Memorial Hospital (ILNM)'s results compare with what was expected based on modeling the transplant outcomes from all U.S. programs. A ratio above 1 indicates higher than expected patient death rates (e.g., a hazard ratio of 1.5 would indicate 50% higher risk), and a ratio below 1 indicates lower than expected patient death rates (e.g., a hazard ratio of 0.75 would indicate 25% lower risk). If ILNM's patient death rate were precisely the expected rate, the estimated hazard ratio would be 1.0.

** The 95% credible interval, [0.12, 2.71], indicates the location of ILNM's true hazard ratio with 95% probability. The best estimate is 3% lower risk of patient death compared to an average program, but ILNM's performance could plausibly range from 88% reduced risk up to 171% increased risk.

Figure C21. Pediatric (<18) 1-year patient death HR estimate

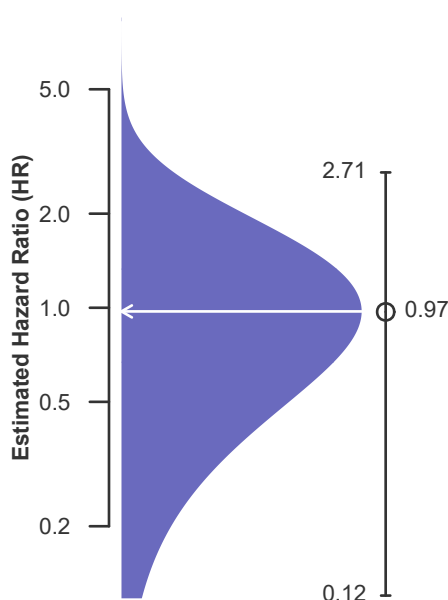
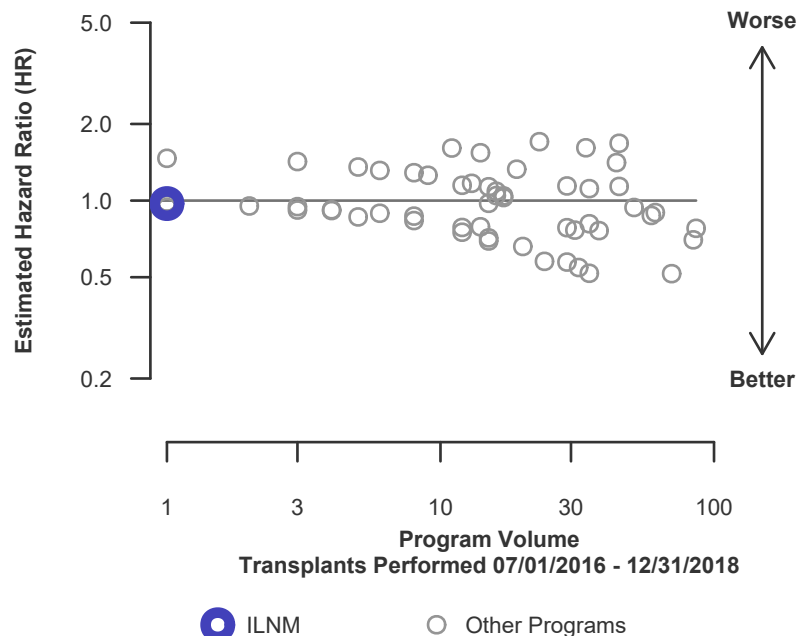


Figure C22. Pediatric (<18) 1-year patient death HR program comparison





C. Transplant Information

Table C15D. Pediatric (<18) 1-year patient survival (deceased donor graft recipients)
Single organ transplants performed between 07/01/2016 and 12/31/2018
Retransplants excluded

	ILNM	U.S.
Number of transplants evaluated	1	1,083
Estimated probability of surviving at 1 year (unadjusted for patient and donor characteristics)	100.00%	94.83%
Expected probability of surviving at 1 year (adjusted for patient and donor characteristics)	94.68%	--
Number of observed deaths during the first year after transplant	0	55
Number of expected deaths during the first year after transplant	0.05	--
Estimated hazard ratio*	0.97	--
95% credible interval for the hazard ratio**	[0.12, 2.71]	--

* The hazard ratio provides an estimate of how Northwestern Memorial Hospital (ILNM)'s results compare with what was expected based on modeling the transplant outcomes from all U.S. programs. A ratio above 1 indicates higher than expected patient death rates (e.g., a hazard ratio of 1.5 would indicate 50% higher risk), and a ratio below 1 indicates lower than expected patient death rates (e.g., a hazard ratio of 0.75 would indicate 25% lower risk). If ILNM's patient death rate were precisely the expected rate, the estimated hazard ratio would be 1.0.

** The 95% credible interval, [0.12, 2.71], indicates the location of ILNM's true hazard ratio with 95% probability. The best estimate is 3% lower risk of patient death compared to an average program, but ILNM's performance could plausibly range from 88% reduced risk up to 171% increased risk.

Figure C21D. Pediatric (<18) 1-year patient death HR estimate (deceased donor grafts)

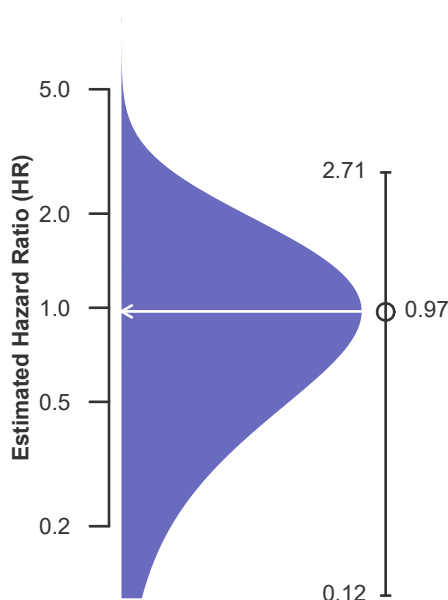
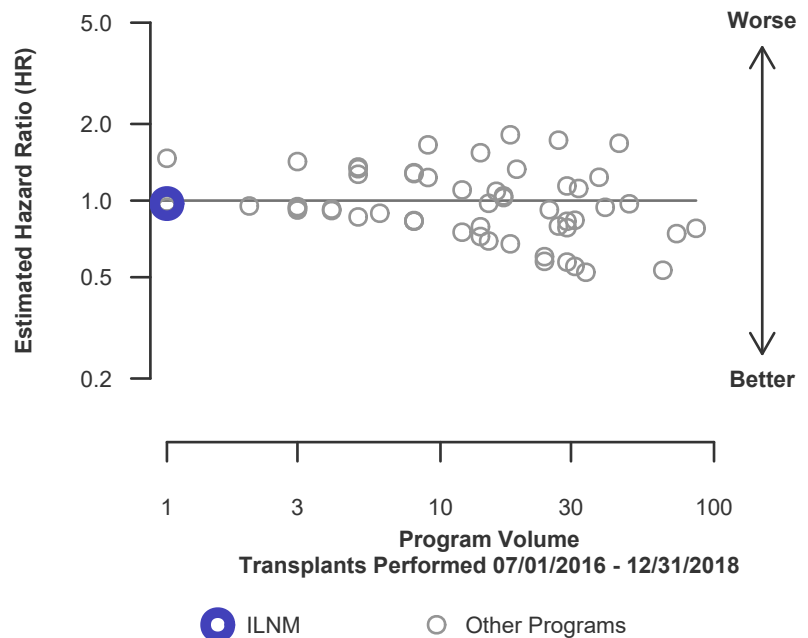


Figure C22D. Pediatric (<18) 1-year patient death HR program comparison (deceased donor grafts)





C. Transplant Information

Table C15L. Pediatric (<18) 1-year patient survival (living donor graft recipients)
Single organ transplants performed between 07/01/2016 and 12/31/2018
Retransplants excluded

This center did not perform any
transplants relevant to
this table during
07/01/2016-12/31/2018

**Figure C21L. Pediatric (<18)
1-year patient death HR estimate
(living donor grafts)**

This center did not perform any
transplants relevant to
this figure during
07/01/2016-12/31/2018

**Figure C22L. Pediatric (<18) 1-year patient death HR program
comparison (living donor grafts)**

This center did not perform any
transplants relevant to
this figure during
07/01/2016-12/31/2018



C. Transplant Information

Table C16. Pediatric (<18) 3-year patient survival

Single organ transplants performed between 01/01/2014 and 06/30/2016
Retransplants excluded

This center did not perform any
transplants relevant to
this table during
01/01/2014-06/30/2016

Figure C23. Pediatric (<18) 3-year patient death HR estimate

This center did not perform any
transplants relevant to
this figure during
01/01/2014-06/30/2016

Figure C24. Pediatric (<18) 3-year patient death HR program comparison

This center did not perform any
transplants relevant to
this figure during
01/01/2014-06/30/2016



C. Transplant Information

Table C16D. Pediatric (<18) 3-year patient survival (deceased donor graft recipients)
Single organ transplants performed between 01/01/2014 and 06/30/2016
Retransplants excluded

This center did not perform any
transplants relevant to
this table during
01/01/2014-06/30/2016

**Figure C23D. Pediatric (<18)
3-year patient death HR estimate
(deceased donor grafts)**

This center did not perform any
transplants relevant to
this figure during
01/01/2014-06/30/2016

**Figure C24D. Pediatric (<18) 3-year patient death HR program
comparison (deceased donor grafts)**

This center did not perform any
transplants relevant to
this figure during
01/01/2014-06/30/2016



C. Transplant Information

Table C16L. Pediatric (<18) 3-year patient survival (living donor graft recipients)
Single organ transplants performed between 01/01/2014 and 06/30/2016
Retransplants excluded

This center did not perform any
transplants relevant to
this table during
01/01/2014-06/30/2016

**Figure C23L. Pediatric (<18)
3-year patient death HR estimate
(living donor grafts)**

This center did not perform any
transplants relevant to
this figure during
01/01/2014-06/30/2016

**Figure C24L. Pediatric (<18) 3-year patient death HR program
comparison (living donor grafts)**

This center did not perform any
transplants relevant to
this figure during
01/01/2014-06/30/2016



C. Transplant Information

Table C17. Multi-organ transplant graft survival: 07/01/2016 - 12/31/2018

Adult (18+) Transplants

Transplant Type	First-Year Outcomes					
	Transplants Performed		Liver Graft Failures		Estimated Liver Graft Survival	
	ILNM-TX1	USA	ILNM-TX1	USA	ILNM-TX1	USA
Kidney-Liver	24	1,744	1	179	95.8%	89.2%
Liver-Heart	2	75	0	7	100.0%	89.5%
Liver-Lung	1	23	1	4	0.0%	82.6%

Pediatric (<18) Transplants

No pediatric (<18) multi-organ transplants were performed

Table C18. Multi-organ transplant patient survival: 07/01/2016 - 12/31/2018

Adult (18+) Transplants

Transplant Type	First-Year Outcomes					
	Transplants Performed		Patient Deaths		Estimated Patient Survival	
	ILNM-TX1	USA	ILNM-TX1	USA	ILNM-TX1	USA
Kidney-Liver	24	1,744	1	165	95.8%	90.0%
Liver-Heart	2	75	0	7	100.0%	89.5%
Liver-Lung	1	23	1	4	0.0%	82.6%

Pediatric (<18) Transplants

No pediatric (<18) multi-organ transplants were performed



D. Living Donor Information

Table D1. Living donor summary: 07/01/2016 - 06/30/2019

Living Donor Follow-Up	This Center			United States		
	07/2016-06/2017	07/2017-06/2018	07/2018-12/2018	07/2016-06/2017	07/2017-06/2018	07/2018-12/2018
Number of Living Donors	15	11	3	354	353	219
6-Month Follow-Up						
Donors due for follow-up	15	11	3	353	353	219
Timely clinical data	14 93.3%	11 100.0%	3 100.0%	300 85.0%	312 88.4%	190 86.8%
Timely lab data	13 86.7%	9 81.8%	3 100.0%	297 84.1%	305 86.4%	188 85.8%
12-Month Follow-Up						
Donors due for follow-up	15	11		353	353	
Timely clinical data	13 86.7%	9 81.8%		294 83.3%	291 82.4%	
Timely lab data	11 73.3%	6 54.5%		269 76.2%	284 80.5%	
24-Month Follow-Up						
Donors due for follow-up	15			352		
Timely clinical data	14 93.3%			255 72.4%		
Timely lab data	6 40.0%			219 62.2%		

Follow-up completion standards through 2 years post-donation were implemented in policy on February 1, 2013.