



---

## User Guide

---

This report contains a wide range of useful information about the heart transplant program at Mayo Clinic Hospital (AZMC). The report has three main sections:

- A. Program Summary
- B. Waiting List Information
- C. Transplant Information

The Program Summary is a one-page summary highlighting characteristics of the program, including the number of candidates on the waiting list, the number of transplants performed at the program, the number of patients being cared for by the program, and patient outcomes, including outcomes while on the waiting list (the transplant rate and the death rate while on the waiting list) and outcomes after transplant (patient and graft survival probabilities). If the program performed transplants in both adults and children, survival probabilities for adults and children (pediatrics) are provided separately. For each of the outcomes measures presented, a comparison is provided showing what would be expected at this program if it were performing as similar programs around the country perform when treating similar patients. More details regarding these outcome measures are provided in Sections B and C of the report.

The Waiting List Information section contains more detailed information on how many candidates are on the waiting list at the program, the types of candidates on the waiting list, how long candidates typically have to wait for a transplant at this program, how frequently candidates successfully receive a transplant, and how often candidates on the waiting list die before receiving a transplant.

Table B1 shows the activity on this program's waiting list during two recent 1-year periods and provides comparisons to all programs within this program's OPTN region (see <http://optn.transplant.hrsa.gov/members/regions.asp> for information on OPTN regions) and the nation as a whole. Tables B2 and B3 describe the candidates on the waiting list at this program, with comparisons to candidates waiting in the same donor service area (OPO/DSA) the OPTN region, and the nation as a whole.

Table B4 shows how many candidates were removed from the waiting list because they received a transplant. The program's transplant rate is calculated as the number of candidates who received a transplant divided by the person-years observed at the program (person-years is a combination of how many candidates were on the waiting list along with how long each candidate was followed since some candidates are not on the waiting list for the entire year). The transplant rate and comparisons to what would be expected at this program are presented in Figures B1 and B2. Figure B1 shows the transplant rate compared to what was expected at this program. The expected transplant rate is an estimate of what we would expect at this program if it were performing transplants at rates similar to other programs in the US with similar candidates on their waiting lists. The expected rate is only an estimate, and is made with a certain level of uncertainty. This uncertainty is shown in Figure B2. Figure B2 displays the ratio of the observed to the expected transplant rate. A ratio of 1 indicates that the observed transplant rate was equal to the expected transplant rate, while a ratio less than 1 indicates the observed rate was lower than expected rate and a ratio greater than 1 indicates the observed rate was higher than the expected rate. However, the level of uncertainty must be considered when interpreting these numbers. The 95% interval is also shown on Figure B2. This interval provides a range within which the true ratio of observed to expected transplant rates is likely to be. If this



---

## User Guide

---

confidence interval includes (crosses) 1.0, then we cannot say that this program's observed transplant rate is different from what would be expected. The observed deceased donor transplant rate at this program was 167.8 per 100 person-years. Transplant rates are also provided for adult and pediatric patients separately along with comparisons to adult and pediatric rates in the DSA, the OPTN region, and the nation. Please refer to the PSR Technical Methods documentation available at <http://www.srtr.org> for more detail regarding how expected rates are calculated.

The death rate (also known as the mortality rate) for candidates on the waiting list is presented in Table B5 and Figures B4-B6. These data are presented in the same way as the transplant rate data in the previous section. The intent of these tables and figures is to describe risk of death once candidates are listed rather than while they are listed. Therefore, time at risk and deaths after removal from the waiting list for reasons other than transplant, transfer to another transplant program, or recovery (no longer needing a transplant), and before any subsequent transplant, are included. As with transplant rates, mortality rates should be interpreted carefully taking into consideration the interval displayed in Figure B5. For a complete description of how observed and expected mortality rates are calculated, please refer to the technical documentation available at <http://www.srtr.org>.

Table B6 presents information on what happens to candidates on the waiting list by three different time points after listing: 6 months, 12 months, and 18 months. The table displays percentages of candidates who have died, been removed from the waiting list, been transplanted, or been transferred or lost-to-follow-up. Tables B7 and B8 provide more detail regarding how many candidates have received a deceased donor transplant by certain time points during the first 3 years after being put on the transplant waiting list. Each row of Tables B7 and B8 presents the percent of candidates who received a deceased donor transplant by each time point. Table B9 presents data on the time it took for different percentages of patients to be transplanted for candidates added to the list between 07/01/2013 and 12/31/2018. The time it took for 5% (the 5th percentile) of patients to receive a transplant at this program was 0.2 months. If "Not Observed" is displayed in the table, then too few candidates received transplants before 06/30/2019 to calculate a particular percentile of transplant times.

Table B10 contains a summary of the offer acceptance practices of the program. The offer acceptance ratio indicates whether the program is more or less likely to accept offers than the average program. If the offer acceptance ratio is greater than 1.0, then the program tends to accept more offers than average; if the offer acceptance ratio is less than 1.0, then the program tends to accept fewer offers than average. Figure B7 shows the distribution of program offer acceptance rates as well as the offer acceptance rate for this program. Figures B8 - B12 similarly show offer acceptance rates for subsets of offers.

The Transplant Information section begins with descriptions of transplant recipients in Tables C1 and C2. Data on recipients of deceased donor transplants are presented (Tables C1D and C2D); if applicable, data on recipients of living donor transplants are presented separately (Tables C1L and C2L). Comparisons to the region and the nation as a whole are provided. A description of the deceased donors used at this program is provided in Table C3D, along with characteristics of living donors in Table C3L, if applicable. Finally, information on the transplant procedure for deceased and living donor transplants is presented in Tables C4D and C4L, respectively.



## User Guide

---

Starting with Table C5, transplant outcomes are presented along with comparisons to what would be expected at this program and what happened in the nation as a whole. Tables C5-C10 present information on graft survival (survival of the transplanted organ), with data presented separately for adult and pediatric recipients. Patients are followed from the time of transplant until either failure of the transplanted organ or death, whichever comes first. Please refer to the technical methods for more information on these calculations (<http://www.srtr.org>).

While Tables C5-C10 present data on graft survival, Tables C11-C16 present information on patient survival. For these tables, patients are followed from the time of transplant until death, regardless of whether the transplant is functioning or the patient required another transplant to survive.

Tables C17 and C18 summarize the multiorgan transplant outcomes at this program. The summary statistics in these tables are descriptive and are not risk-adjusted for different donor and candidate characteristics.

Additional information regarding the technical methods and the risk adjustment models used to estimate expected event rates is available on the SRTR website at <http://www.srtr.org>. We welcome and encourage feedback on these reports. Please feel free to share feedback with the SRTR at the following e-mail: [srtr@srtr.org](mailto:srtr@srtr.org).



---

## Table of Contents

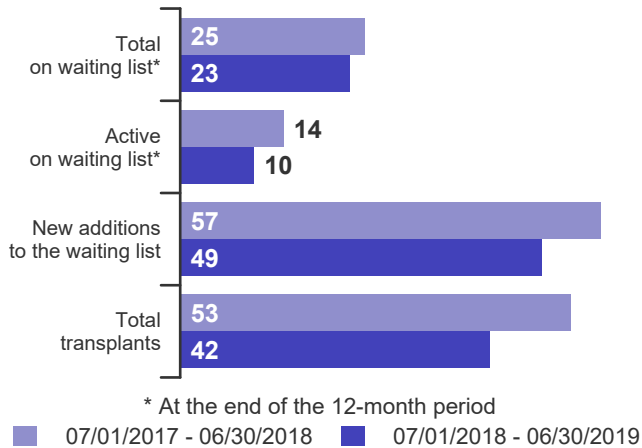
---

Section	Page
User Guide	i
<b>A. Program Summary</b>	
Program Summary	1
<b>B. Waiting List Information</b>	
Waiting list activity	2
Demographic characteristics of waiting list candidates	3
Medical characteristics of waiting list candidates	4
Deceased donor transplant rates	5
Waiting list mortality rates	6
Waiting list candidate status after listing	7
Percent of candidates with deceased donor transplants: demographic characteristics	8
Percent of candidates with deceased donor transplants: medical characteristics	9
Time to transplant for waiting list candidates	10
Offer acceptance practices	11
<b>C. Transplant Information</b>	
Deceased donor transplant recipient demographic characteristics	13
Deceased donor transplant recipient medical characteristics	14
Deceased donor characteristics	15
Deceased donor transplant characteristics	16
Deceased donor graft survival	17
Deceased donor patient survival	23
Multi-organ transplant graft survival	29
Multi-organ transplant patient survival	29



## A. Program Summary

**Figure A1. Waiting list and transplant activity**

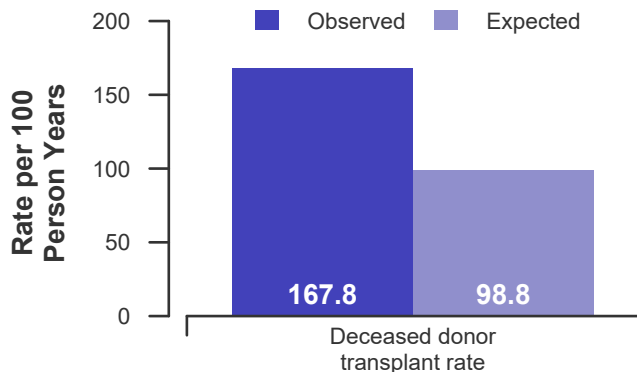


**Table A1. Census of transplant recipients**

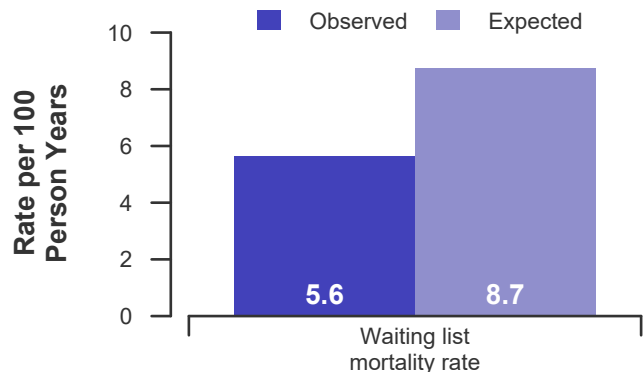
Recipients	07/01/2017-06/30/2018	07/01/2018-06/30/2019
Transplanted at this center	53	42
Followed by this center*	229	274
...transplanted at this program	203	238
...transplanted elsewhere	26	36

\* Recipients followed are transplant recipients for whom the center has submitted a post-transplant follow-up form for a transplant that took place before the 12-month interval for each column.

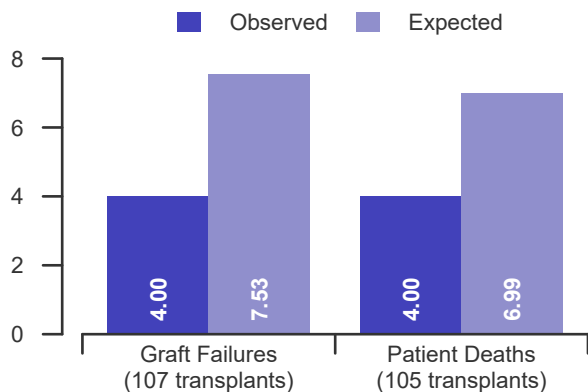
**Figure A2. Transplant rates  
07/01/2017 - 06/30/2019**



**Figure A3. Waiting list mortality rates  
07/01/2017 - 06/30/2019**



**Figure A4. First-year adult graft and patient survival: 07/01/2016 - 12/31/2018**



**Figure A5. First-year pediatric graft and patient survival: 07/01/2016 - 12/31/2018**

This center did not perform any transplants relevant to this figure during 07/01/2016-12/31/2018



## B. Waiting List Information

Table B1. Waiting list activity summary: 07/01/2017 - 06/30/2019

Waiting List Registrations	Counts for this center		Activity for 07/01/2018 to 06/30/2019 as percent of registrants on waiting list on 07/01/2018		
	07/01/2017-06/30/2018	07/01/2018-06/30/2019	This Center (%)	OPTN Region (%)	U.S. (%)
<b>On waiting list at start</b>	38	25	100.0	100.0	100.0
<b>Additions</b>					
New listings at this center	57	49	196.0	145.9	116.4
<b>Removals</b>					
Transferred to another center	0	0	0.0	1.9	2.8
Received living donor transplant*	0	0	0.0	0.0	0.0
Received deceased donor transplant*	53	42	168.0	122.8	87.8
Died	1	0	0.0	6.4	6.6
Transplanted at another center	1	1	4.0	1.4	1.3
Deteriorated	4	4	16.0	7.4	7.7
Recovered	7	3	12.0	6.4	6.2
Other reasons	4	1	4.0	8.4	9.2
<b>On waiting list at end of period</b>	25	23	92.0	91.2	94.8

\* These patients were removed from waiting list with removal code indicating transplant; this may not equal the number of transplants performed at this center during the specified period.



## B. Waiting List Information

**Table B2. Demographic characteristics of waiting list candidates**  
Candidates registered on the waiting list between 07/01/2018 and 06/30/2019

Demographic Characteristic	New Waiting List Registrations 07/01/2018 to 06/30/2019 (%)			All Waiting List Registrations on 06/30/2019 (%)		
	This Center (N=49)	OPTN Region (N=709)	U.S. (N=4,673)	This Center (N=23)	OPTN Region (N=443)	U.S. (N=3,804)
<b>All (%)</b>	100.0	100.0	100.0	100.0	100.0	100.0
<b>Ethnicity/Race (%)*</b>						
White	67.3	52.6	60.8	65.2	53.3	59.8
African-American	16.3	13.0	23.7	8.7	15.8	26.3
Hispanic/Latino	8.2	22.6	10.5	17.4	21.7	10.6
Asian	4.1	10.9	3.8	4.3	6.8	2.3
Other	4.1	1.0	1.1	4.3	2.5	1.1
Unknown	0.0	0.0	0.0	0.0	0.0	0.0
<b>Age (%)</b>						
<2 years	0.0	5.9	5.8	0.0	4.1	3.4
2-11 years	0.0	3.8	4.7	0.0	4.3	4.2
12-17 years	0.0	4.1	4.2	0.0	4.7	3.0
18-34 years	14.3	10.3	9.4	26.1	16.5	11.6
35-49 years	26.5	18.5	18.8	26.1	19.2	22.4
50-64 years	46.9	40.5	42.1	47.8	42.2	44.6
65-69 years	12.2	13.0	12.5	0.0	7.2	9.7
70+ years	0.0	3.9	2.5	0.0	1.8	1.1
<b>Gender (%)</b>						
Male	69.4	70.2	70.0	69.6	73.4	74.6
Female	30.6	29.8	30.0	30.4	26.6	25.4

\* Race and ethnicity are reported together as a single data element, reflecting their data collection (either race or ethnicity is required, but not both). Patients formerly coded as white and Hispanic are coded as Hispanic. Race and ethnicity sum to 100%.



## B. Waiting List Information

**Table B3. Medical characteristics of waiting list candidates**  
Candidates registered on the waiting list between 07/01/2018 and 06/30/2019

Medical Characteristic	New Waiting List Registrations 07/01/2018 to 06/30/2019 (%)			All Waiting List Registrations on 06/30/2019 (%)		
	This Center (N=49)	OPTN Region (N=709)	U.S. (N=4,673)	This Center (N=23)	OPTN Region (N=443)	U.S. (N=3,804)
<b>All (%)</b>	100.0	100.0	100.0	100.0	100.0	100.0
<b>Blood Type (%)</b>						
O	44.9	40.9	44.9	60.9	62.5	58.3
A	34.7	37.9	36.1	17.4	28.4	28.9
B	10.2	16.1	14.5	13.0	7.7	11.2
AB	10.2	5.1	4.5	8.7	1.4	1.6
Unknown	0.0	0.0	0.0	0.0	0.0	0.0
<b>Previous Transplant (%)</b>						
Yes	8.2	6.1	4.1	4.3	6.5	3.8
No	91.8	93.9	95.9	95.7	93.5	96.2
Unknown	0.0	0.0	0.0	0.0	0.0	0.0
<b>Primary Disease (%)</b>						
Cardiomyopathy	69.4	58.8	58.1	73.9	56.2	56.9
Coronary Artery Disease	22.4	20.7	25.3	17.4	21.4	27.5
Retransplant/Graft Failure	6.1	5.5	3.7	0.0	5.9	3.2
Valvular Heart Disease	0.0	0.7	0.9	0.0	1.4	0.9
Congenital Heart Disease	2.0	11.6	10.9	8.7	13.8	10.8
Other	0.0	2.7	1.2	0.0	1.4	0.7
Missing	0.0	0.0	0.0	0.0	0.0	0.0
<b>Medical Urgency Status at Listing (%)</b>						
Status 1A	8.2	16.1	16.3	4.3	6.8	9.3
Status 1B	16.3	11.4	13.8	8.7	16.5	24.9
Status 2	6.1	11.1	8.8	26.1	38.4	27.7
Adult Status 1	6.1	2.4	2.5	0.0	0.2	0.2
Adult Status 2	4.1	10.6	10.4	0.0	1.1	1.6
Adult Status 3	6.1	9.9	7.4	4.3	3.2	2.8
Adult Status 4	20.4	18.3	23.4	13.0	13.3	18.2
Adult Status 5	8.2	1.8	1.3	4.3	1.4	1.0
Adult Status 6	14.3	14.7	13.1	17.4	14.7	10.4
Temporarily Inactive	10.2	3.7	2.9	21.7	4.5	3.8





## B. Waiting List Information

Table B4D. Deceased donor transplant rates: 07/01/2017 - 06/30/2019

Waiting List Registrations	This Center	OPO/DSA	Region	U.S.
<b>All Candidates</b>				
Count on waiting list at start*	38	63	497	4,000
Person Years**	56.6	92.0	960.7	7,886.3
Removals for Transplant	95	150	1,147	6,833
<b>Adult (18+) Candidates</b>				
Count on waiting list at start*	38	56	419	3,606
Person Years**	56.6	79.4	830.0	7,082.8
Removals for transplant	95	123	983	5,846
<b>Pediatric (&lt;18) Candidates</b>				
Count on waiting list at start*	--	--	--	--
Person Years**	--	--	--	--
Removals for transplant	--	--	--	--

\* Counts in this table may be lower than similar counts in other waiting list tables, such as Table B1. A small percentage (~1%) of patients are found to have died or been transplanted before being removed from the waiting list, so these patients are excluded if the event occurs prior to the start of the study period. Inactive time on the waiting list is included in the calculations for this table.

\*\* Person years are calculated as days (converted to fractional years). The number of days from July 1 or from the date of first wait listing until death, transplant, removal from the waiting list or June 30.

Figure B1D. Observed and expected deceased donor transplant rates: 07/01/2017 - 06/30/2019

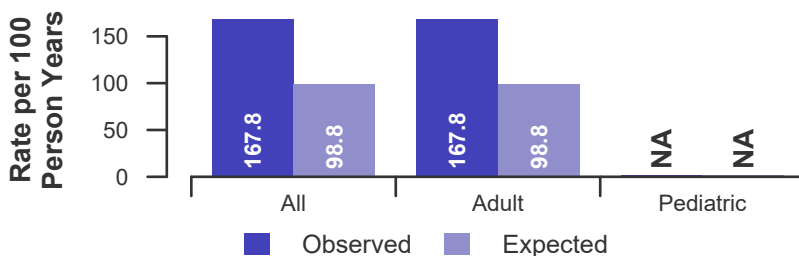


Figure B2D. Deceased donor transplant rate ratio estimate

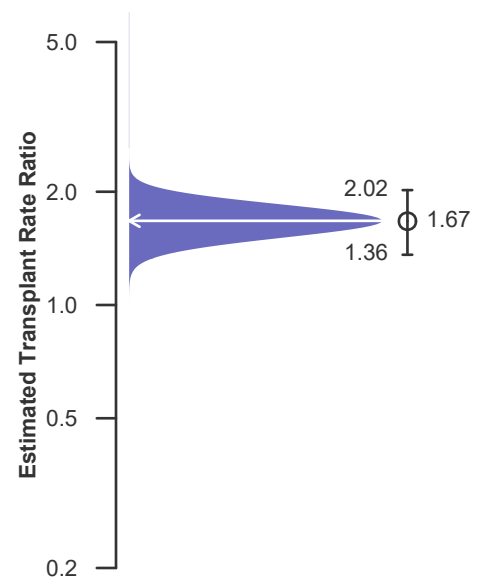
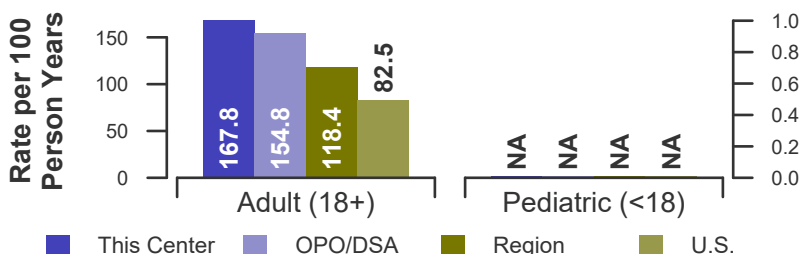


Figure B3D. Observed adult (18+) and pediatric (<18) deceased donor transplant rates: 07/01/2017 - 06/30/2019





## B. Waiting List Information

Table B5. Waiting list mortality rates: 07/01/2017 - 06/30/2019

Waiting List Registrations	This Center	OPO/DSA	Region	U.S.
<b>All Candidates</b>				
Count on waiting list at start*	38	63	497	4,000
Person Years**	70.9	120.2	1,095.1	9,064.5
Number of deaths	4	12	93	840
<b>Adult (18+) Candidates</b>				
Count on waiting list at start*	38	56	419	3,606
Person Years**	70.9	103.8	949.0	8,160.4
Number of deaths	4	10	75	703
<b>Pediatric (&lt;18) Candidates</b>				
Count on waiting list at start*	--	--	--	--
Person Years**	--	--	--	--
Number of deaths	--	--	--	--

\* Counts in this table may be lower than similar counts in other waiting list tables, such as Table B1. A small percentage (~1%) of patients are found to have died or been transplanted before being removed from the waiting list, so these patients are excluded if the event occurs prior to the start of the study period. Inactive time on the waiting list is included in the calculations for this table.

\*\* Person years are calculated as days (converted to fractional years). The number of days from July 1 or from the date of first wait listing until death, transplant, 60 days after recovery, transfer or June 30.

Figure B4. Observed and expected waiting list mortality rates: 07/01/2017 - 06/30/2019

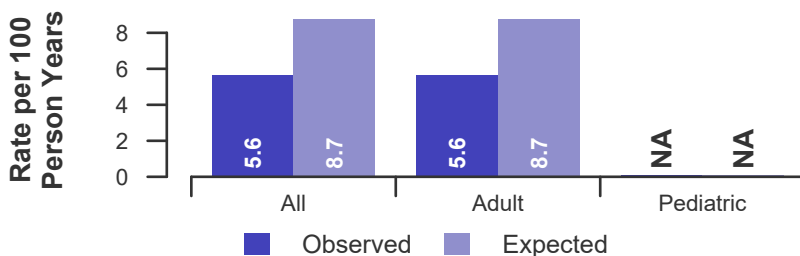


Figure B5. Waiting list mortality rate ratio estimate

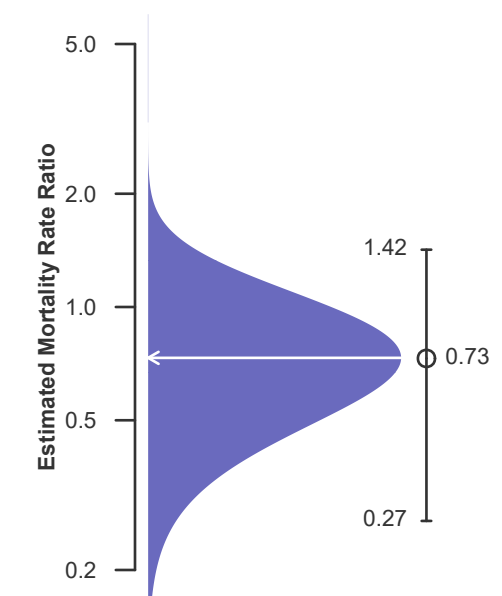
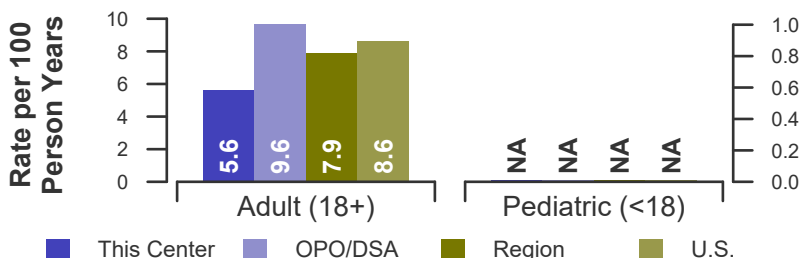


Figure B6. Observed adult (18+) and pediatric (<18) waiting list mortality rates: 07/01/2017 - 06/30/2019





## B. Waiting List Information

**Table B6. Waiting list candidate status after listing**  
Candidates registered on waiting list between 01/01/2017 and 12/31/2017

Waiting list status (survival status)	This Center (N=62)			U.S. (N=4,536)		
	Months Since Listing			Months Since Listing		
	6	12	18	6	12	18
<b>Alive on waiting list (%)</b>	32.3	12.9	6.5	40.9	25.3	16.9
<b>Died on the waiting list without transplant (%)</b>	1.6	1.6	1.6	4.9	5.4	5.9
<b>Removed without transplant (%):</b>						
Condition worsened (status unknown)	3.2	4.8	4.8	4.2	5.3	5.9
Condition improved (status unknown)	1.6	4.8	4.8	1.1	2.0	2.8
Refused transplant (status unknown)	0.0	1.6	1.6	0.1	0.3	0.4
Other	3.2	4.8	4.8	1.4	2.9	3.9
<b>Transplant (living or deceased donor) (%):</b>						
Functioning (alive)	58.1	66.1	45.2	43.7	51.5	38.3
Failed-Retransplanted (alive)	0.0	0.0	0.0	0.0	0.0	0.0
Failed-alive not retransplanted	0.0	0.0	0.0	0.0	0.1	0.1
Died	0.0	0.0	0.0	2.4	3.9	5.3
Status Yet Unknown*	0.0	3.2	30.6	0.6	2.1	18.9
<b>Lost or Transferred (status unknown) (%)</b>	0.0	0.0	0.0	0.7	1.1	1.6
<b>TOTAL (%)</b>	100.0	100.0	100.0	100.0	100.0	100.0
Total % known died on waiting list or after transplant	1.6	1.6	1.6	7.3	9.4	11.2
Total % known died or removed as unstable	4.8	6.5	6.5	11.5	14.7	17.2
Total % removed for transplant	58.1	69.4	75.8	46.8	57.6	62.7
Total % with known functioning transplant (alive)	58.1	66.1	45.2	43.7	51.5	38.3

\* Follow-up form covering specified time period not yet completed, and possibly has not become due.



## B. Waiting List Information

**Table B7. Percent of candidates with deceased donor transplants: demographic characteristics**  
Candidates registered on the waiting list between 07/01/2013 and 06/30/2016

Characteristic	N	Percent transplanted at time periods since listing								
		This Center				United States				
		30 day	1 year	2 years	3 years	N	30 day	1 year	2 years	3 years
<b>All</b>	169	11.8	60.9	70.4	74.6	13,020	14.9	52.5	60.9	64.0
<b>Ethnicity/Race*</b>										
White	115	13.9	60.0	67.8	73.0	8,038	15.2	52.7	61.2	64.2
African-American	18	0.0	61.1	77.8	77.8	3,032	12.6	48.1	57.3	60.8
Hispanic/Latino	29	13.8	69.0	79.3	82.8	1,318	15.2	56.8	63.8	67.1
Asian	4	0.0	50.0	75.0	75.0	496	22.8	61.9	69.0	71.8
Other	3	0.0	33.3	33.3	33.3	136	18.4	61.0	66.2	67.6
Unknown	0	--	--	--	--	0	--	--	--	--
<b>Age</b>										
<2 years	0	--	--	--	--	804	18.0	61.3	62.6	62.8
2-11 years	0	--	--	--	--	587	13.3	63.0	69.3	72.2
12-17 years	0	--	--	--	--	506	23.9	72.1	77.7	79.1
18-34 years	16	12.5	75.0	75.0	81.2	1,207	13.3	48.6	57.0	60.6
35-49 years	41	9.8	56.1	65.9	70.7	2,378	12.8	46.3	57.3	61.2
50-64 years	93	10.8	60.2	73.1	76.3	5,556	14.0	51.0	60.5	64.2
65-69 years	18	22.2	66.7	66.7	72.2	1,672	15.7	52.5	59.7	62.0
70+ years	1	0.0	0.0	0.0	0.0	310	27.7	66.8	69.0	69.0
<b>Gender</b>										
Male	120	8.3	58.3	70.0	75.0	9,328	13.8	51.3	60.5	64.0
Female	49	20.4	67.3	71.4	73.5	3,692	17.7	55.6	61.8	64.0

\* Race and ethnicity are reported together as a single data element, reflecting their data collection (either race or ethnicity is required, but not both). Patients formerly coded as white and Hispanic are coded as Hispanic. Race and ethnicity sum to 100%.



## B. Waiting List Information

**Table B8. Percent of candidates with deceased donor transplants: medical characteristics**  
Candidates registered on the waiting list between 07/01/2013 and 06/30/2016

Characteristic	N	Percent transplanted at time periods since listing								
		This Center				United States				
		30 day	1 year	2 years	3 years	N	30 day	1 year	2 years	3 years
<b>All</b>	169	11.8	60.9	70.4	74.6	13,020	14.9	52.5	60.9	64.0
<b>Blood Type</b>										
O	83	8.4	48.2	59.0	63.9	5,842	9.4	43.9	53.4	57.2
A	64	12.5	70.3	79.7	84.4	4,708	18.2	58.0	65.7	68.5
B	17	23.5	88.2	88.2	88.2	1,845	17.7	58.9	66.9	69.3
AB	5	20.0	60.0	80.0	80.0	624	32.1	72.9	76.9	78.0
<b>Previous Transplant</b>										
Yes	1	100.0	100.0	100.0	100.0	553	12.1	45.0	50.3	52.8
No	168	11.3	60.7	70.2	74.4	12,467	15.0	52.8	61.4	64.5
<b>Primary Disease</b>										
Cardiomyopathy	105	11.4	61.0	69.5	73.3	7,314	15.5	53.9	63.2	66.4
Coronary Artery Disease	58	12.1	62.1	74.1	79.3	3,665	13.9	50.6	58.8	62.5
Retransplant/Graft Failure	1	100.0	100.0	100.0	100.0	483	12.0	45.1	50.7	53.2
Valvular Heart Disease	2	0.0	0.0	0.0	0.0	144	19.4	55.6	61.8	63.9
Congenital Heart Disease	2	0.0	50.0	50.0	50.0	1,259	14.5	53.1	58.4	60.1
Other	1	0.0	100.0	100.0	100.0	155	14.2	44.5	51.0	52.3
Missing	0	--	--	--	--	0	--	--	--	--
<b>Medical Urgency Status at Listing</b>										
Old Status 1	0	--	--	--	--	0	--	--	--	--
Status 1A	20	45.0	85.0	95.0	100.0	4,143	28.4	66.8	70.2	71.6
Status 1B	76	14.5	75.0	81.6	82.9	5,046	11.4	53.2	63.8	67.2
Status 2	58	0.0	37.9	53.4	60.3	3,384	4.4	35.8	47.1	52.0
Unknown	15	0.0	46.7	46.7	53.3	447	7.6	38.5	46.3	49.2



## B. Waiting List Information

**Table B9. Time to transplant for waiting list candidates\***

Candidates registered on the waiting list between 07/01/2013 and 12/31/2018

Percentile	Center	Months to Transplant**		U.S.
		OPO/DSA	Region	
5th	0.2	0.2	0.2	0.3
10th	0.5	0.4	0.4	0.5
25th	1.3	1.3	1.2	1.8
50th (median time to transplant)	6.1	5.6	5.3	8.0
75th	21.7	31.0	52.2	Not Observed

\* If cells contain "Not Observed" fewer than that percentile of patients had received a transplant. For example, the 50th percentile of time to transplant is the time when 50% of candidates have received transplants. If waiting times are long, then the 50th percentile may not be observed during the follow-up period for this table. Also, if more than 50% of candidates are removed from the list due to death or other reasons before receiving transplants, then the 50th percentile of time to transplant will not be observed.

\*\* Censored on 06/30/2019. Calculated as the months after listing, during which the corresponding percent of all patients initially listed had received a transplant.



## B. Waiting List Information

Table B10. Offer Acceptance Practices: 07/01/2018 - 06/30/2019

Offers Acceptance Characteristics	This Center	OPO/DSA	Region	U.S.
<b>Overall</b>				
Number of Offers	133	250	3,402	45,104
Number of Acceptances	35	60	528	3,219
Expected Acceptances	18.2	37.8	399.2	3,216.8
Offer Acceptance Ratio*	1.84	1.56	1.32	1.00
95% Credible Interval**	[1.29, 2.47]	--	--	--
<b>PHS increased infectious risk</b>				
Number of Offers	55	84	1,153	13,883
Number of Acceptances	12	15	147	1,033
Expected Acceptances	5.8	8.0	115.9	1,031.5
Offer Acceptance Ratio*	1.80	1.70	1.26	1.00
95% Credible Interval**	[0.99, 2.86]	--	--	--
<b>Ejection fraction &lt; 60</b>				
Number of Offers	45	72	936	15,179
Number of Acceptances	8	12	120	908
Expected Acceptances	4.4	7.4	83.0	905.7
Offer Acceptance Ratio*	1.57	1.49	1.44	1.00
95% Credible Interval**	[0.75, 2.68]	--	--	--
<b>Donor Age &gt;= 40</b>				
Number of Offers	59	75	1,607	21,232
Number of Acceptances	4	6	147	748
Expected Acceptances	5.0	5.8	118.9	755.0
Offer Acceptance Ratio*	0.86	1.03	1.23	0.99
95% Credible Interval**	[0.32, 1.68]	--	--	--
<b>Hard-to-Place Hearts (Over 50 Offers)</b>				
Number of Offers	22	31	600	13,632
Number of Acceptances	1	1	16	178
Expected Acceptances	0.2	0.5	13.3	181.8
Offer Acceptance Ratio*	1.34	1.20	1.18	0.98
95% Credible Interval**	[0.28, 3.22]	--	--	--
<b>Donor more than 500 miles away</b>				
Number of Offers	19	64	698	12,917
Number of Acceptances	3	7	70	609
Expected Acceptances	0.6	5.3	46.3	605.7
Offer Acceptance Ratio*	1.90	1.24	1.49	1.01
95% Credible Interval**	[0.62, 3.90]	--	--	--

\* The offer acceptance ratio estimates the relative offer acceptance practice of Mayo Clinic Hospital (AZMC) compared to the national offer acceptance practice. A ratio above one indicates the program is more likely to accept an offer compared to national offer acceptance practices (e.g., an offer acceptance ratio of 1.25 indicates a 25% more likely to accept an offer), while a ratio below one indicates the program is less likely to accept an offer compared to national offer acceptance practices (e.g., an offer acceptance ratio of 0.75 indicates a 25% less likely to accept an offer).

\*\* As an example, the 95% Credible Interval for the overall offer acceptance ratio, [1.29, 2.47], indicates the location of AZMC's true offer acceptance ratio with 95% probability. The best estimate is 84% more likely to accept an offer compared to national acceptance behavior, but AZMC's performance could plausibly range from 29% higher acceptance up to 147% higher acceptance.



## B. Waiting List Information

Figure B7. Offer acceptance: Overall

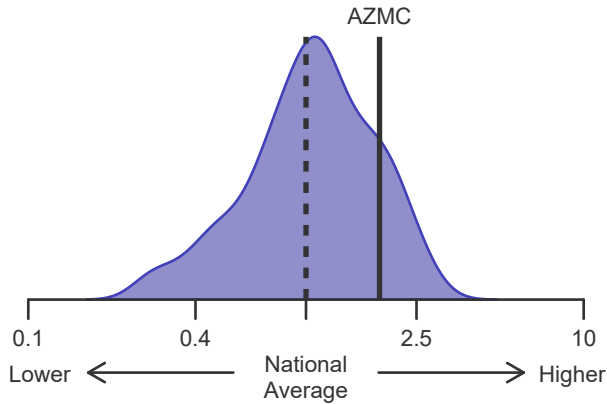


Figure B8. Offer acceptance: PHS increased infectious risk

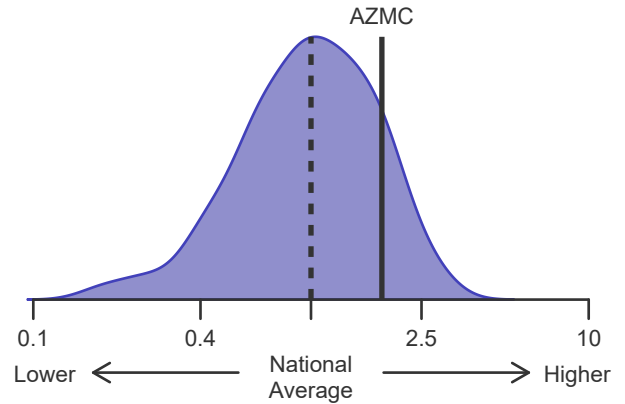


Figure B9. Offer acceptance: Ejection fraction < 60

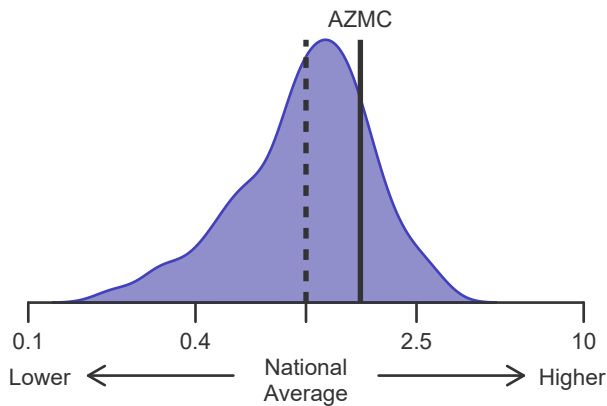


Figure B10. Offer acceptance: Donor age >= 40

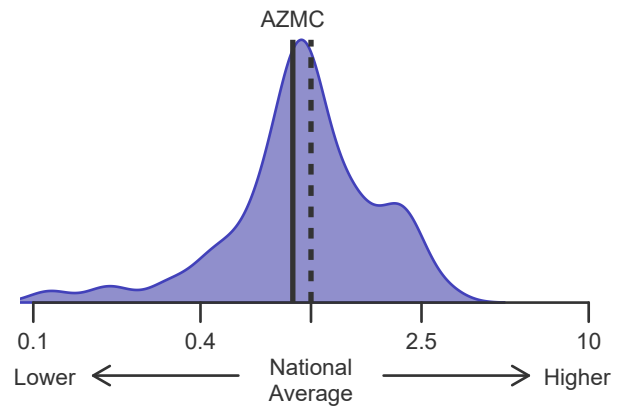


Figure B11. Offer acceptance: Offer number > 50

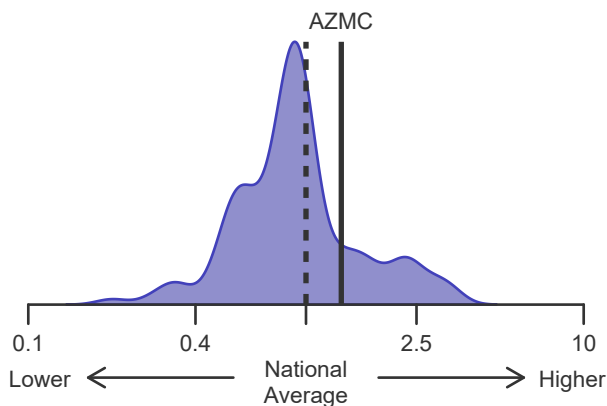
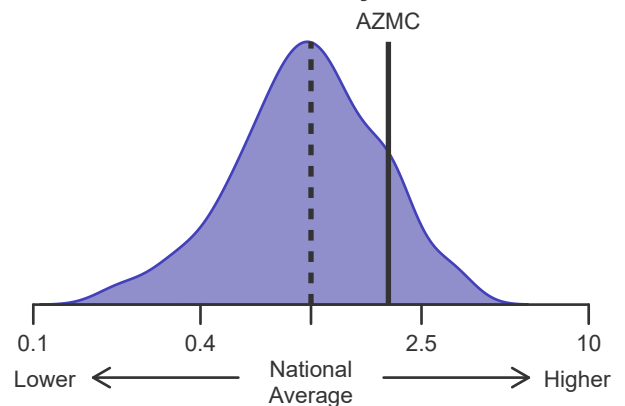


Figure B12. Offer acceptance: Donor more than 500 miles away







## C. Transplant Information

**Table C1D. Deceased donor transplant recipient demographic characteristics**  
Patients transplanted between 07/01/2018 and 06/30/2019

Characteristic	Percentage in each category		
	Center (N=42)	Region (N=597)	U.S. (N=3,525)
<b>Ethnicity/Race (%)*</b>			
White	71.4	52.1	62.5
African-American	14.3	12.6	21.7
Hispanic/Latino	9.5	23.6	10.7
Asian	2.4	10.6	4.2
Other	2.4	1.2	0.9
Unknown	0.0	0.0	0.0
<b>Age (%)</b>			
<2 years	0.0	5.2	5.1
2-11 years	0.0	4.9	4.6
12-17	0.0	3.9	4.6
18-34	11.9	11.6	9.8
35-49 years	23.8	20.3	17.7
50-64 years	45.2	35.2	40.7
65-69 years	19.0	15.4	14.2
70+ years	0.0	3.7	3.2
<b>Gender (%)</b>			
Male	71.4	71.4	69.4
Female	28.6	28.6	30.6

\* Race and ethnicity are reported together as a single data element, reflecting their data collection (either race or ethnicity is required, but not both). Patients formerly coded as white and Hispanic are coded as Hispanic. Race and ethnicity sum to 100%.



## C. Transplant Information

**Table C2D. Deceased donor transplant recipient medical characteristics**  
Patients transplanted between 07/01/2018 and 06/30/2019

Characteristic	Percentage in each category		
	Center (N=42)	Region (N=597)	U.S. (N=3,525)
<b>Blood Type (%)</b>			
O	42.9	38.4	40.4
A	42.9	37.0	38.4
B	7.1	18.3	15.7
AB	7.1	6.4	5.5
<b>Previous Transplant (%)</b>			
Yes	4.8	4.9	3.9
No	95.2	95.1	96.1
<b>Body Mass Index (%)</b>			
0-20	16.7	25.8	20.7
21-25	35.7	30.2	27.3
26-30	19.0	26.1	28.4
31-35	28.6	15.6	18.5
36-40	0.0	2.0	4.1
41+	0.0	0.3	0.5
Unknown	0.0	0.0	0.6
<b>Primary Disease (%)</b>			
Cardiomyopathy	64.3	59.8	61.5
Coronary Artery Disease	31.0	20.6	24.5
Retransplant/Graft Failure	0.0	0.0	0.0
Valvular Heart Disease	2.4	1.2	1.0
Congenital Heart Disease	2.4	15.4	11.5
Other	0.0	2.8	1.5
Missing	0.0	0.2	0.1
<b>Medical Urgency Status at Transplant (%)</b>			
Status 1A	11.9	29.8	30.6
Status 1B	23.8	8.5	9.0
Status 2	2.4	2.5	1.4
Adult Status 1	9.5	3.4	5.0
Adult Status 2	16.7	21.1	26.2
Adult Status 3	7.1	18.6	14.6
Adult Status 4	21.4	11.6	10.5
Adult Status 5	2.4	0.5	0.3
Adult Status 6	4.8	4.0	2.5
<b>Recipient Medical Condition at Transplant (%)</b>			
Not Hospitalized	59.5	37.4	37.4
Hospitalized	9.5	17.3	17.5
ICU	31.0	45.4	44.8
Unknown	0.0	0.0	0.3
<b>Recipient Mechanical, Ventilated or Organ-Perfusion Support Status at Transplant (%)</b>			
No Support Mechanism	21.4	25.5	19.5
Devices*	45.2	46.6	59.1
Other Support Mechanism	33.3	28.0	21.2
Unknown	0.0	0.0	0.2

\* Devices include ventricular assist devices (VAD), extracorporeal membrane oxygenation (ECMO), intraaortic balloon pump (IABP), and total artificial heart (TAH).



## C. Transplant Information

**Table C3D. Deceased donor characteristics**  
Transplants performed between 07/01/2018 and 06/30/2019

Donor Characteristic	Percentage in each category		
	Center (N=42)	Region (N=597)	U.S. (N=3,525)
<b>Cause of Death (%)</b>			
Deceased: Stroke	7.1	16.8	14.0
Deceased: MVA	11.9	19.4	18.9
Deceased: Other	81.0	63.8	67.0
<b>Ethnicity/Race (%)*</b>			
White	64.3	47.7	62.5
African-American	7.1	8.5	16.7
Hispanic/Latino	26.2	36.7	17.2
Asian	0.0	3.7	1.8
Other	2.4	3.4	1.8
Not Reported	0.0	0.0	0.0
<b>Age (%)</b>			
<2 years	0.0	4.4	4.0
2-11 years	0.0	4.5	4.6
12-17	4.8	4.4	7.5
18-34	69.0	48.2	48.4
35-49 years	19.0	27.8	28.4
50-64 years	7.1	10.6	7.0
65-69 years	0.0	0.0	0.0
70+ years	0.0	0.2	0.0
<b>Gender (%)</b>			
Male	73.8	69.7	68.4
Female	26.2	30.3	31.6
<b>Blood Type (%)</b>			
O	59.5	52.1	51.3
A	31.0	33.5	34.9
B	4.8	11.7	11.5
AB	4.8	2.7	2.4
Unknown	0.0	0.0	0.0

\* Race and ethnicity are reported together as a single data element, reflecting their data collection (either race or ethnicity is required, but not both). Patients formerly coded as white and Hispanic are coded as Hispanic. Race and ethnicity sum to 100%.



## C. Transplant Information

**Table C4D. Deceased donor transplant characteristics**  
Transplants performed between 07/01/2018 and 06/30/2019

Transplant Characteristic	Percentage in each category		
	Center (N=42)	Region (N=597)	U.S. (N=3,525)
<b>Total Ischemic Time (Minutes): Local (%)</b>			
Deceased: 0-90 min	0.0	3.8	8.8
Deceased: 91-180 min	88.5	58.5	59.4
Deceased: 181-270 min	11.5	30.7	27.9
Deceased: 271-360 min	0.0	1.7	1.9
Deceased: 361+ min	0.0	0.7	0.7
Not Reported	0.0	4.5	1.3
<b>Total Ischemic Time (Minutes): Shared (%)</b>			
Deceased: 0-90 min	0.0	0.6	0.3
Deceased: 91-180 min	0.0	12.9	13.8
Deceased: 181-270 min	100.0	63.2	71.1
Deceased: 271-360 min	0.0	15.8	12.2
Deceased: 361+ min	0.0	1.0	1.0
Not Reported	0.0	6.5	1.5
<b>Procedure Type (%)</b>			
Heart alone	83.3	89.3	92.2
Heart and another organ	16.7	10.7	7.8
<b>Sharing (%)</b>			
Local	61.9	48.1	39.5
Shared	38.1	51.9	60.5
<b>Median Time in Hospital After Transplant*</b>	10.0 Days	14.5 Days	17.0 Days

\* Multiple organ transplants are excluded from this statistic.



## C. Transplant Information

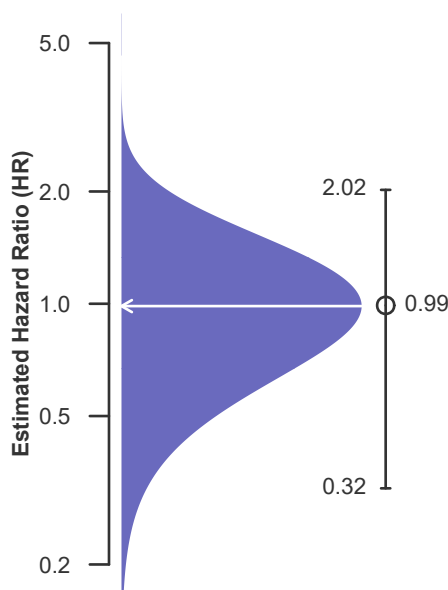
**Table C5D. Adult (18+) 1-month survival with a functioning deceased donor graft**  
**Single organ transplants performed between 07/01/2016 and 12/31/2018**  
**Deaths and retransplants are considered graft failures**

	AZMC	U.S.
Number of transplants evaluated	107	6,572
Estimated probability of surviving with a functioning graft at 1 month (unadjusted for patient and donor characteristics)	97.20%	96.42%
Expected probability of surviving with a functioning graft at 1 month (adjusted for patient and donor characteristics)	97.06%	--
Number of observed graft failures (including deaths) during the first month after transplant	3	235
Number of expected graft failures (including deaths) during the first month after transplant	3.07	--
Estimated hazard ratio*	0.99	--
95% credible interval for the hazard ratio**	[0.32, 2.02]	--

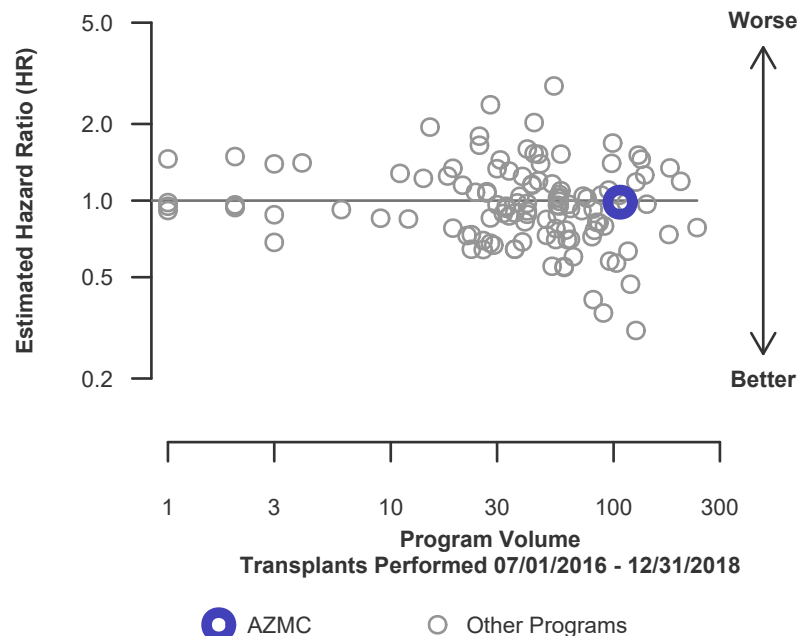
\* The hazard ratio provides an estimate of how Mayo Clinic Hospital (AZMC)'s results compare with what was expected based on modeling the transplant outcomes from all U.S. programs. A ratio above 1 indicates higher than expected graft failure rates (e.g., a hazard ratio of 1.5 would indicate 50% higher risk), and a ratio below 1 indicates lower than expected graft failure rates (e.g., a hazard ratio of 0.75 would indicate 25% lower risk). If AZMC's graft failure rate were precisely the expected rate, the estimated hazard ratio would be 1.0.

\*\* The 95% credible interval, [0.32, 2.02], indicates the location of AZMC's true hazard ratio with 95% probability. The best estimate is 1% lower risk of graft failure compared to an average program, but AZMC's performance could plausibly range from 68% reduced risk up to 102% increased risk.

**Figure C1D. Adult (18+) 1-month deceased donor graft failure HR estimate**



**Figure C2D. Adult (18+) 1-month deceased donor graft failure HR program comparison**





## C. Transplant Information

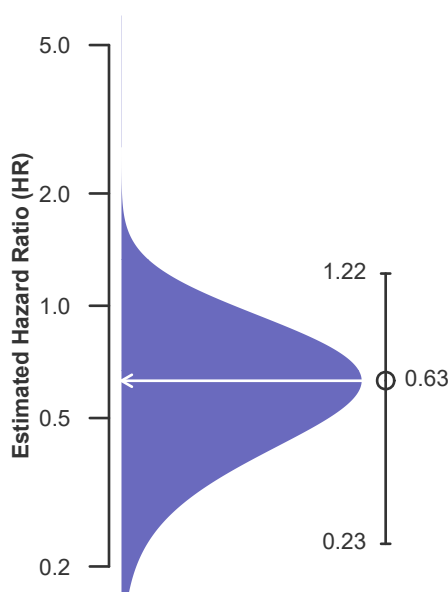
**Table C6D. Adult (18+) 1-year survival with a functioning deceased donor graft**  
**Single organ transplants performed between 07/01/2016 and 12/31/2018**  
**Deaths and retransplants are considered graft failures**

	AZMC	U.S.
Number of transplants evaluated	107	6,572
Estimated probability of surviving with a functioning graft at 1 year (unadjusted for patient and donor characteristics)	96.26%	91.30%
Expected probability of surviving with a functioning graft at 1 year (adjusted for patient and donor characteristics)	92.67%	--
Number of observed graft failures (including deaths) during the first year after transplant	4	547
Number of expected graft failures (including deaths) during the first year after transplant	7.53	--
Estimated hazard ratio*	0.63	--
95% credible interval for the hazard ratio**	[0.23, 1.22]	--

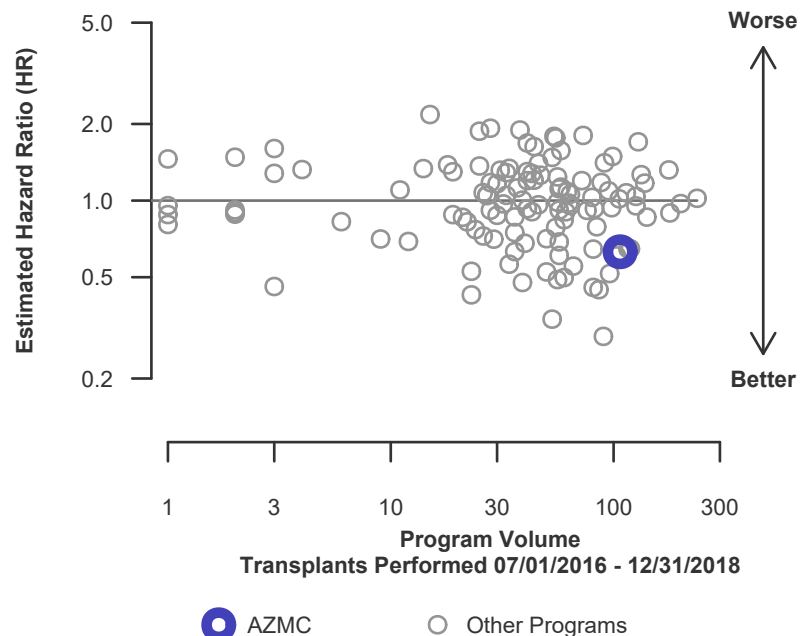
\* The hazard ratio provides an estimate of how Mayo Clinic Hospital (AZMC)'s results compare with what was expected based on modeling the transplant outcomes from all U.S. programs. A ratio above 1 indicates higher than expected graft failure rates (e.g., a hazard ratio of 1.5 would indicate 50% higher risk), and a ratio below 1 indicates lower than expected graft failure rates (e.g., a hazard ratio of 0.75 would indicate 25% lower risk). If AZMC's graft failure rate were precisely the expected rate, the estimated hazard ratio would be 1.0.

\*\* The 95% credible interval, [0.23, 1.22], indicates the location of AZMC's true hazard ratio with 95% probability. The best estimate is 37% lower risk of graft failure compared to an average program, but AZMC's performance could plausibly range from 77% reduced risk up to 22% increased risk.

**Figure C3D. Adult (18+) 1-year deceased donor graft failure HR estimate**



**Figure C4D. Adult (18+) 1-year deceased donor graft failure HR program comparison**





## C. Transplant Information

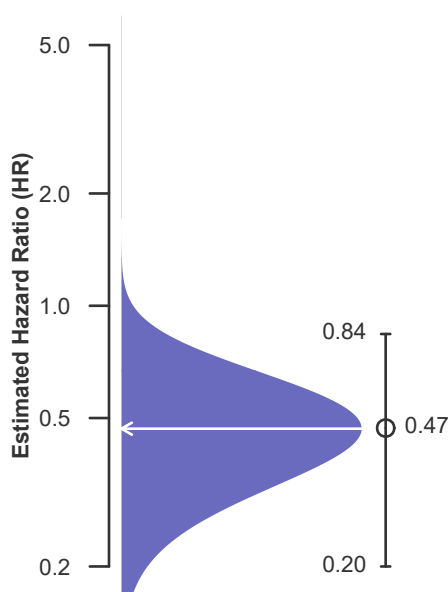
**Table C7D. Adult (18+) 3-year survival with a functioning deceased donor graft**  
**Single organ transplants performed between 01/01/2014 and 06/30/2016**  
**Deaths and retransplants are considered graft failures**

	AZMC	U.S.
Number of transplants evaluated	98	5,552
Estimated probability of surviving with a functioning graft at 3 years (unadjusted for patient and donor characteristics)	93.88%	84.69%
Expected probability of surviving with a functioning graft at 3 years (adjusted for patient and donor characteristics)	85.49%	--
Number of observed graft failures (including deaths) during the first 3 years after transplant	6	850
Number of expected graft failures (including deaths) during the first 3 years after transplant	15.09	--
Estimated hazard ratio*	0.47	--
95% credible interval for the hazard ratio**	[0.20, 0.84]	--

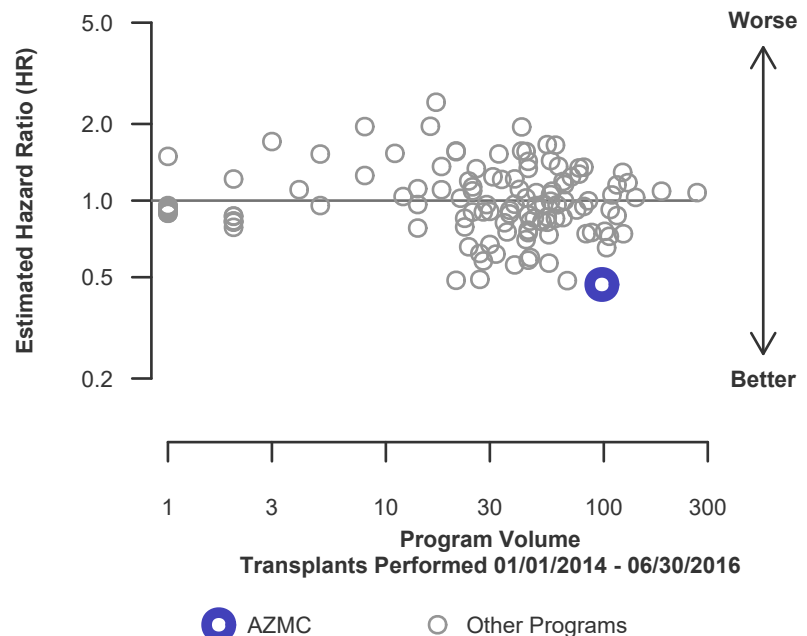
\* The hazard ratio provides an estimate of how Mayo Clinic Hospital (AZMC)'s results compare with what was expected based on modeling the transplant outcomes from all U.S. programs. A ratio above 1 indicates higher than expected graft failure rates (e.g., a hazard ratio of 1.5 would indicate 50% higher risk), and a ratio below 1 indicates lower than expected graft failure rates (e.g., a hazard ratio of 0.75 would indicate 25% lower risk). If AZMC's graft failure rate were precisely the expected rate, the estimated hazard ratio would be 1.0.

\*\* The 95% credible interval, [0.20, 0.84], indicates the location of AZMC's true hazard ratio with 95% probability. The best estimate is 53% lower risk of graft failure compared to an average program, but AZMC's performance could plausibly range from 80% reduced risk up to 16% reduced risk.

**Figure C5D. Adult (18+) 3-year deceased donor graft failure HR estimate**



**Figure C6D. Adult (18+) 3-year deceased donor graft failure HR program comparison**





## C. Transplant Information

**Table C8D. Pediatric (<18) 1-month survival with a functioning deceased donor graft**  
**Single organ transplants performed between 07/01/2016 and 12/31/2018**  
**Deaths and retransplants are considered graft failures**

This center did not perform any  
transplants relevant to  
this table during  
07/01/2016-12/31/2018

**Figure C7D. Pediatric (<18)**  
**1-month deceased donor graft**  
**failure HR estimate**

This center did not perform any  
transplants relevant to  
this figure during  
07/01/2016-12/31/2018

**Figure C8D. Pediatric (<18) 1-month deceased donor graft**  
**failure HR program comparison**

This center did not perform any  
transplants relevant to  
this figure during  
07/01/2016-12/31/2018





## C. Transplant Information

**Table C9D. Pediatric (<18) 1-year survival with a functioning deceased donor graft**  
**Single organ transplants performed between 07/01/2016 and 12/31/2018**  
**Deaths and retransplants are considered graft failures**

This center did not perform any  
transplants relevant to  
this table during  
07/01/2016-12/31/2018

**Figure C9D. Pediatric (<18)**  
**1-year deceased donor graft**  
**failure HR estimate**

This center did not perform any  
transplants relevant to  
this figure during  
07/01/2016-12/31/2018

**Figure C10D. Pediatric (<18) 1-year deceased donor graft**  
**failure HR program comparison**

This center did not perform any  
transplants relevant to  
this figure during  
07/01/2016-12/31/2018



## C. Transplant Information

**Table C10D. Pediatric (<18) 3-year survival with a functioning deceased donor graft**  
**Single organ transplants performed between 01/01/2014 and 06/30/2016**  
**Deaths and retransplants are considered graft failures**

This center did not perform any  
transplants relevant to  
this table during  
01/01/2014-06/30/2016

**Figure C11D. Pediatric (<18)**  
**3-year deceased donor graft**  
**failure HR estimate**

This center did not perform any  
transplants relevant to  
this figure during  
01/01/2014-06/30/2016

**Figure C12D. Pediatric (<18) 3-year deceased donor graft**  
**failure HR program comparison**

This center did not perform any  
transplants relevant to  
this figure during  
01/01/2014-06/30/2016



## C. Transplant Information

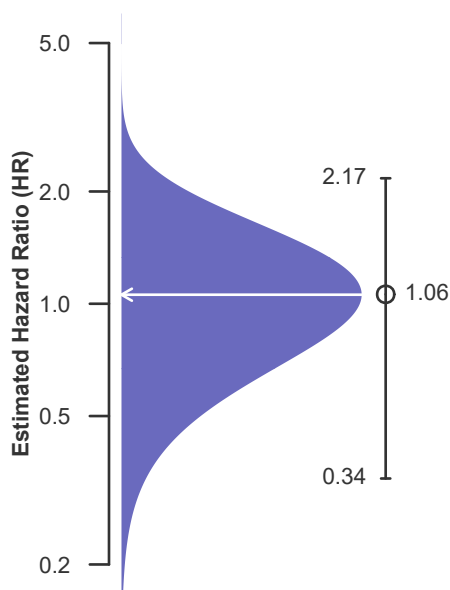
**Table C11D. Adult (18+) 1-month patient survival (deceased donor graft recipients)**  
**Single organ transplants performed between 07/01/2016 and 12/31/2018**  
**Retransplants excluded**

	AZMC	U.S.
Number of transplants evaluated	105	6,420
Estimated probability of surviving at 1 month (unadjusted for patient and donor characteristics)	97.14%	96.71%
Expected probability of surviving at 1 month (adjusted for patient and donor characteristics)	97.32%	--
Number of observed deaths during the first month after transplant	3	211
Number of expected deaths during the first month after transplant	2.73	--
Estimated hazard ratio*	1.06	--
95% credible interval for the hazard ratio**	[0.34, 2.17]	--

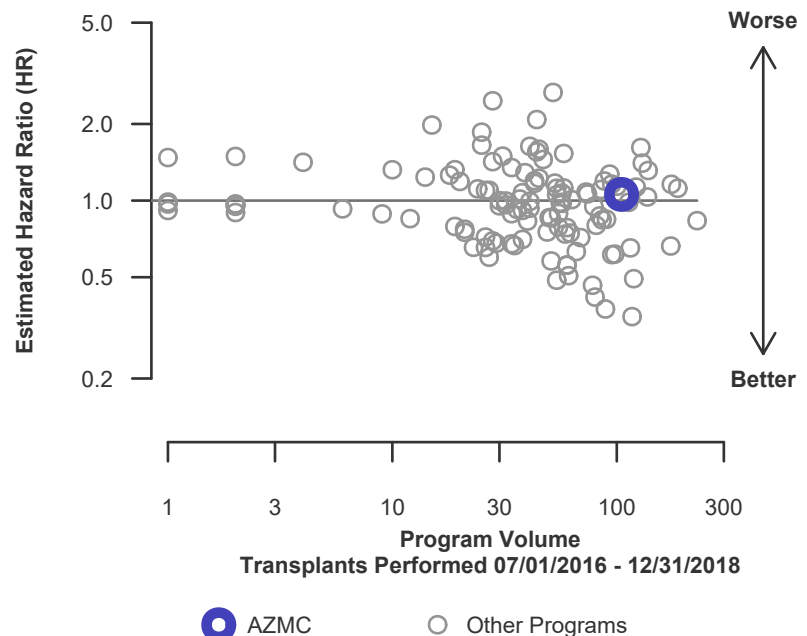
\* The hazard ratio provides an estimate of how Mayo Clinic Hospital (AZMC)'s results compare with what was expected based on modeling the transplant outcomes from all U.S. programs. A ratio above 1 indicates higher than expected patient death rates (e.g., a hazard ratio of 1.5 would indicate 50% higher risk), and a ratio below 1 indicates lower than expected patient death rates (e.g., a hazard ratio of 0.75 would indicate 25% lower risk). If AZMC's patient death rate were precisely the expected rate, the estimated hazard ratio would be 1.0.

\*\* The 95% credible interval, [0.34, 2.17], indicates the location of AZMC's true hazard ratio with 95% probability. The best estimate is 6% higher risk of patient death compared to an average program, but AZMC's performance could plausibly range from 66% reduced risk up to 117% increased risk.

**Figure C13D. Adult (18+) 1-month patient death HR estimate (deceased donor grafts)**



**Figure C14D. Adult (18+) 1-month patient death HR program comparison (deceased donor grafts)**





## C. Transplant Information

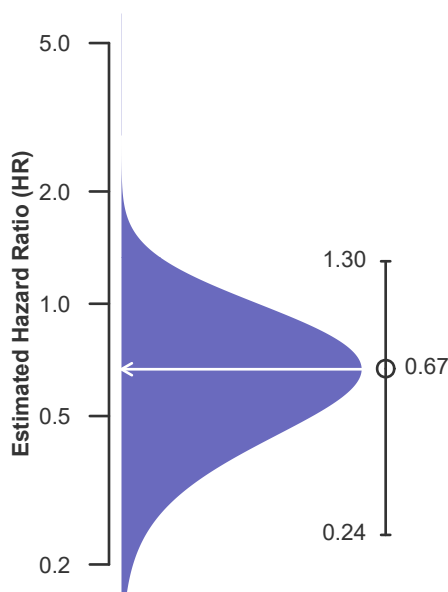
**Table C12D. Adult (18+) 1-year patient survival (deceased donor graft recipients)**  
**Single organ transplants performed between 07/01/2016 and 12/31/2018**  
**Retransplants excluded**

	AZMC	U.S.
Number of transplants evaluated	105	6,420
Estimated probability of surviving at 1 year (unadjusted for patient and donor characteristics)	96.19%	91.60%
Expected probability of surviving at 1 year (adjusted for patient and donor characteristics)	92.98%	--
Number of observed deaths during the first year after transplant	4	515
Number of expected deaths during the first year after transplant	6.99	--
Estimated hazard ratio*	0.67	--
95% credible interval for the hazard ratio**	[0.24, 1.30]	--

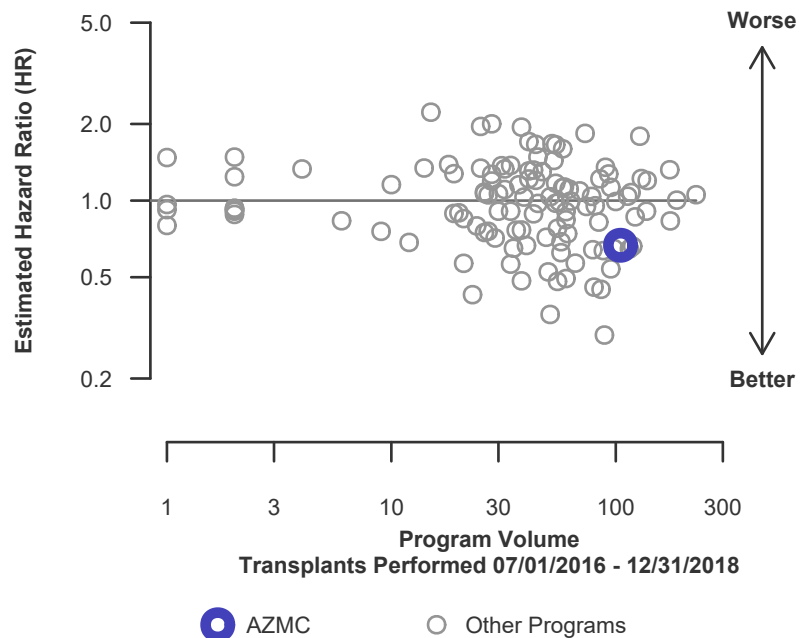
\* The hazard ratio provides an estimate of how Mayo Clinic Hospital (AZMC)'s results compare with what was expected based on modeling the transplant outcomes from all U.S. programs. A ratio above 1 indicates higher than expected patient death rates (e.g., a hazard ratio of 1.5 would indicate 50% higher risk), and a ratio below 1 indicates lower than expected patient death rates (e.g., a hazard ratio of 0.75 would indicate 25% lower risk). If AZMC's patient death rate were precisely the expected rate, the estimated hazard ratio would be 1.0.

\*\* The 95% credible interval, [0.24, 1.30], indicates the location of AZMC's true hazard ratio with 95% probability. The best estimate is 33% lower risk of patient death compared to an average program, but AZMC's performance could plausibly range from 76% reduced risk up to 30% increased risk.

**Figure C15D. Adult (18+) 1-year patient death HR estimate (deceased donor grafts)**



**Figure C16D. Adult (18+) 1-year patient death HR program comparison (deceased donor grafts)**





## C. Transplant Information

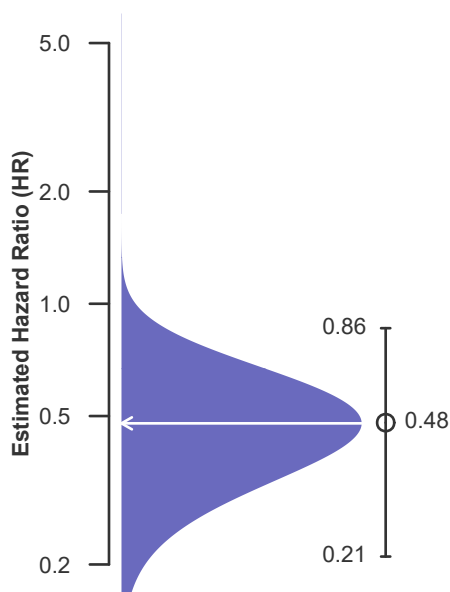
**Table C13D. Adult (18+) 3-year patient survival (deceased donor graft recipients)**  
**Single organ transplants performed between 01/01/2014 and 06/30/2016**  
**Retransplants excluded**

	AZMC	U.S.
Number of transplants evaluated	98	5,427
Estimated probability of surviving at 3 years (unadjusted for patient and donor characteristics)	93.88%	85.19%
Expected probability of surviving at 3 years (adjusted for patient and donor characteristics)	85.78%	--
Number of observed deaths during the first 3 years after transplant	6	804
Number of expected deaths during the first 3 years after transplant	14.74	--
Estimated hazard ratio*	0.48	--
95% credible interval for the hazard ratio**	[0.21, 0.86]	--

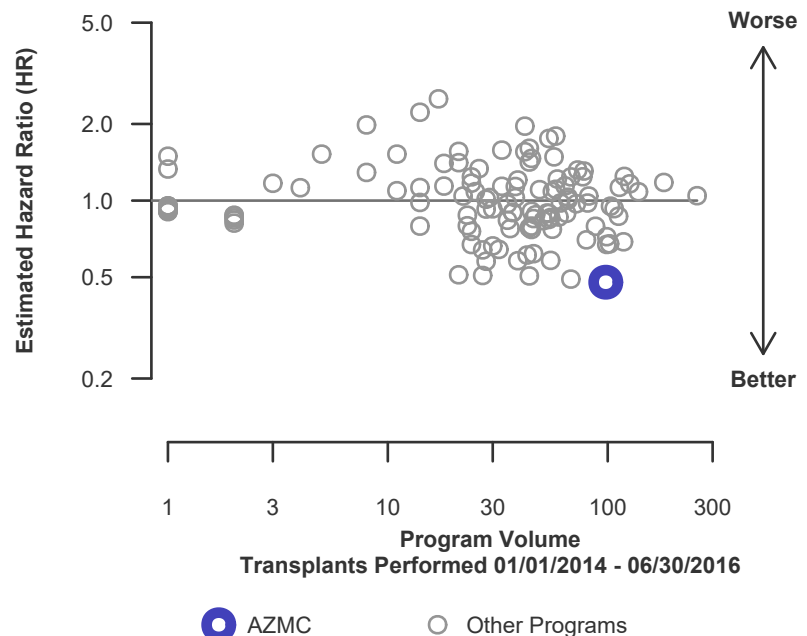
\* The hazard ratio provides an estimate of how Mayo Clinic Hospital (AZMC)'s results compare with what was expected based on modeling the transplant outcomes from all U.S. programs. A ratio above 1 indicates higher than expected patient death rates (e.g., a hazard ratio of 1.5 would indicate 50% higher risk), and a ratio below 1 indicates lower than expected patient death rates (e.g., a hazard ratio of 0.75 would indicate 25% lower risk). If AZMC's patient death rate were precisely the expected rate, the estimated hazard ratio would be 1.0.

\*\* The 95% credible interval, [0.21, 0.86], indicates the location of AZMC's true hazard ratio with 95% probability. The best estimate is 52% lower risk of patient death compared to an average program, but AZMC's performance could plausibly range from 79% reduced risk up to 14% reduced risk.

**Figure C17D. Adult (18+) 3-year patient death HR estimate (deceased donor grafts)**



**Figure C18D. Adult (18+) 3-year patient death HR program comparison (deceased donor grafts)**





## C. Transplant Information

**Table C14D. Pediatric (<18) 1-month patient survival (deceased donor graft recipients)  
Single organ transplants performed between 07/01/2016 and 12/31/2018  
Retransplants excluded**

This center did not perform any  
transplants relevant to  
this table during  
07/01/2016-12/31/2018

**Figure C19D. Pediatric (<18)  
1-month patient death HR  
estimate (deceased donor grafts)**

This center did not perform any  
transplants relevant to  
this figure during  
07/01/2016-12/31/2018

**Figure C20D. Pediatric (<18) 1-month patient death HR  
program comparison (deceased donor grafts)**

This center did not perform any  
transplants relevant to  
this figure during  
07/01/2016-12/31/2018



## C. Transplant Information

**Table C15D. Pediatric (<18) 1-year patient survival (deceased donor graft recipients)**  
Single organ transplants performed between 07/01/2016 and 12/31/2018  
Retransplants excluded

This center did not perform any  
transplants relevant to  
this table during  
07/01/2016-12/31/2018

**Figure C21D. Pediatric (<18)  
1-year patient death HR estimate  
(deceased donor grafts)**

This center did not perform any  
transplants relevant to  
this figure during  
07/01/2016-12/31/2018

**Figure C22D. Pediatric (<18) 1-year patient death HR program  
comparison (deceased donor grafts)**

This center did not perform any  
transplants relevant to  
this figure during  
07/01/2016-12/31/2018



## C. Transplant Information

**Table C16D. Pediatric (<18) 3-year patient survival (deceased donor graft recipients)**  
Single organ transplants performed between 01/01/2014 and 06/30/2016  
Retransplants excluded

This center did not perform any  
transplants relevant to  
this table during  
01/01/2014-06/30/2016

**Figure C23D. Pediatric (<18)  
3-year patient death HR estimate  
(deceased donor grafts)**

This center did not perform any  
transplants relevant to  
this figure during  
01/01/2014-06/30/2016

**Figure C24D. Pediatric (<18) 3-year patient death HR program  
comparison (deceased donor grafts)**

This center did not perform any  
transplants relevant to  
this figure during  
01/01/2014-06/30/2016





## C. Transplant Information

Table C17. Multi-organ transplant graft survival: 07/01/2016 - 12/31/2018

### Adult (18+) Transplants

Transplant Type	First-Year Outcomes					
	Transplants Performed		Heart Graft Failures		Estimated Heart Graft Survival	
	AZMC-TX1	USA	AZMC-TX1	USA	AZMC-TX1	USA
Kidney-Heart	12	463	1	44	91.7%	90.1%

### Pediatric (<18) Transplants

No pediatric (<18) multi-organ transplants were performed

Table C18. Multi-organ transplant patient survival: 07/01/2016 - 12/31/2018

### Adult (18+) Transplants

Transplant Type	First-Year Outcomes					
	Transplants Performed		Patient Deaths		Estimated Patient Survival	
	AZMC-TX1	USA	AZMC-TX1	USA	AZMC-TX1	USA
Kidney-Heart	12	463	1	43	91.7%	90.3%

### Pediatric (<18) Transplants

No pediatric (<18) multi-organ transplants were performed